



ROG Armoury Software

User Guide

ASUS®

Copyright © 2017 ASUSTeK COMPUTER INC. All Rights Reserved.

No part of this manual, including the products and software described in it, may be reproduced, transmitted, transcribed, stored in a retrieval system, or translated into any language in any form or by any means, except documentation kept by the purchaser for backup purposes, without the express written permission of ASUSTeK COMPUTER INC. ("ASUS").

Product warranty or service will not be extended if: (1) the product is repaired, modified or altered, unless such repair, modification of alteration is authorized in writing by ASUS; or (2) the serial number of the product is defaced or missing.

ASUS PROVIDES THIS MANUAL "AS IS" WITHOUT WARRANTY OF ANY KIND, EITHER EXPRESS OR IMPLIED, INCLUDING BUT NOT LIMITED TO THE IMPLIED WARRANTIES OR CONDITIONS OF MERCHANTABILITY OR FITNESS FOR A PARTICULAR PURPOSE. IN NO EVENT SHALL ASUS, ITS DIRECTORS, OFFICERS, EMPLOYEES OR AGENTS BE LIABLE FOR ANY INDIRECT, SPECIAL, INCIDENTAL, OR CONSEQUENTIAL DAMAGES (INCLUDING DAMAGES FOR LOSS OF PROFITS, LOSS OF BUSINESS, LOSS OF USE OR DATA, INTERRUPTION OF BUSINESS AND THE LIKE), EVEN IF ASUS HAS BEEN ADVISED OF THE POSSIBILITY OF SUCH DAMAGES ARISING FROM ANY DEFECT OR ERROR IN THIS MANUAL OR PRODUCT.

SPECIFICATIONS AND INFORMATION CONTAINED IN THIS MANUAL ARE FURNISHED FOR INFORMATIONAL USE ONLY, AND ARE SUBJECT TO CHANGE AT ANY TIME WITHOUT NOTICE, AND SHOULD NOT BE CONSTRUED AS A COMMITMENT BY ASUS. ASUS ASSUMES NO RESPONSIBILITY OR LIABILITY FOR ANY ERRORS OR INACCURACIES THAT MAY APPEAR IN THIS MANUAL, INCLUDING THE PRODUCTS AND SOFTWARE DESCRIBED IN IT.

Products and corporate names appearing in this manual may or may not be registered trademarks or copyrights of their respective companies, and are used only for identification or explanation and to the owners' benefit, without intent to infringe.

Offer to Provide Source Code of Certain Software

This product contains copyrighted software that is licensed under the General Public License ("GPL"), under the Lesser General Public License Version ("LGPL") and/or other Free Open Source Software Licenses. Such software in this product is distributed without any warranty to the extent permitted by the applicable law. Copies of these licenses are included in this product.

Where the applicable license entitles you to the source code of such software and/or other additional data, you may obtain it for a period of three years after our last shipment of the product, either

(1) for free by downloading it from <https://www.asus.com/support/>

or

(2) for the cost of reproduction and shipment, which is dependent on the preferred carrier and the location where you want to have it shipped to, by sending a request to:

ASUSTeK Computer Inc.
Legal Compliance Dept.
15 Li Te Rd.,
Beitou, Taipei 112
Taiwan

In your request please provide the name, model number and version, as stated in the About Box of the product for which you wish to obtain the corresponding source code and your contact details so that we can coordinate the terms and cost of shipment with you.

The source code will be distributed WITHOUT ANY WARRANTY and licensed under the same license as the corresponding binary/object code.

This offer is valid to anyone in receipt of this information.

ASUSTeK is eager to duly provide complete source code as required under various Free Open Source Software licenses. If however you encounter any problems in obtaining the full corresponding source code we would be much obliged if you give us a notification to the email address gpl@asus.com, stating the product and describing the problem (please DO NOT send large attachments such as source code archives, etc. to this email address).

Contents

Getting Started

Downloading ROG Armoury Software	4
ROG Armoury Software main menu	4
ROG Armoury settings	5
Macro menu	6
Stats menu	8

Gaming Keyboard

Keyboard menu	9
Customize	9
Lighting	11

Gaming Mouse

Mouse menu	14
Buttons	14
Performance.....	16
Lighting	17
Calibration.....	18
Power	19

Getting Started

Downloading ROG Armoury Software

Visit <https://www.asus.com/support/> to download the ROG Armoury Software for your ROG product.

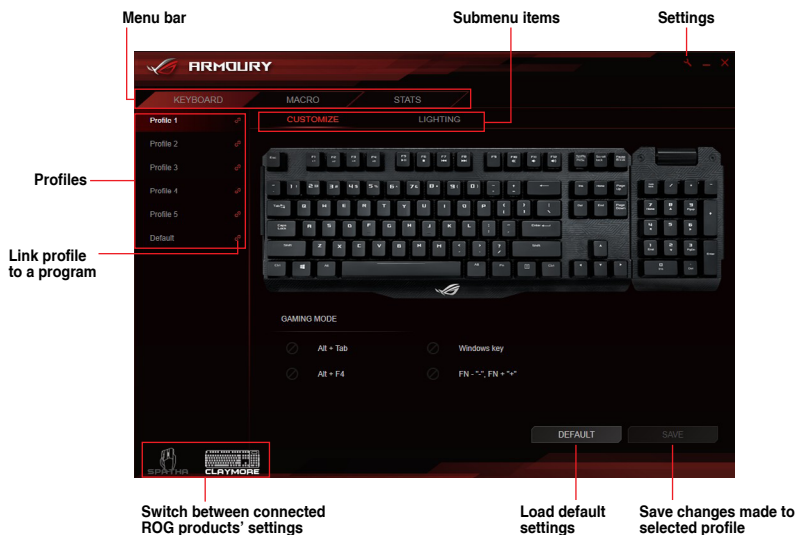


Ensure the firmware and drivers are updated for your ROG product.
Visit <https://www.asus.com/support/> for the latest updates.

ROG Armoury Software main menu



The following screenshots are for reference only. The menu bar may vary according to ROG product connected.




Renaming a profile

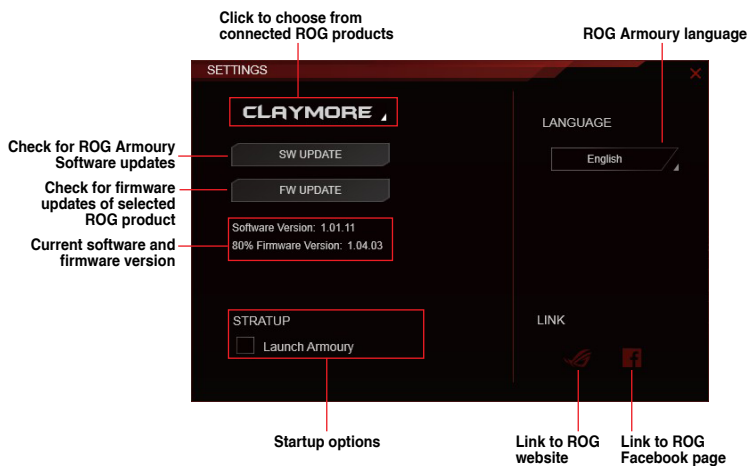
1. Double click on the profile you want to rename.
2. Type in the new profile name and press <Enter>.

Linking your profile to a program

You may link your profiles to different programs. When the linked program is the active window, the profile is automatically loaded. Follow the steps below to link a profile to a program:

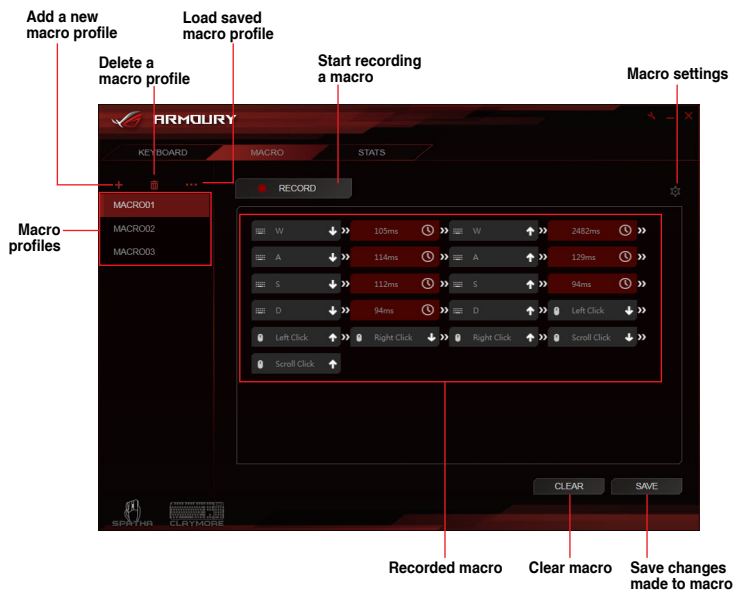
1. Select a profile to link to a program.
2. Click on the  button next to the profile name.
3. Locate the program you wish to link the profile to, then click **OK**.

ROG Armoury settings




Macro menu


The macro menu lets you create and configure macros allowing you to perform specific or several tasks at the same time.




Creating and naming a macro

1. Click  to create a new macro profile.
2. Right click or left click on the macro name to rename the macro profile.


Deleting a macro

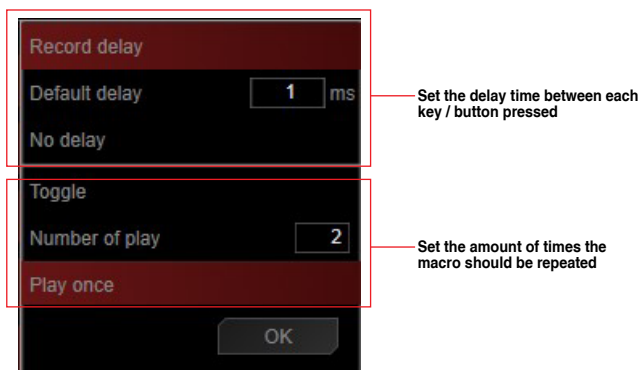
1. Select the macro profile you wish to delete.
2. Click  to delete the selected macro profile.

Loading a macro

1. Click  to load a macro profile.
2. Locate the macro profile and click **Open** to load the macro profile.

Recording a macro

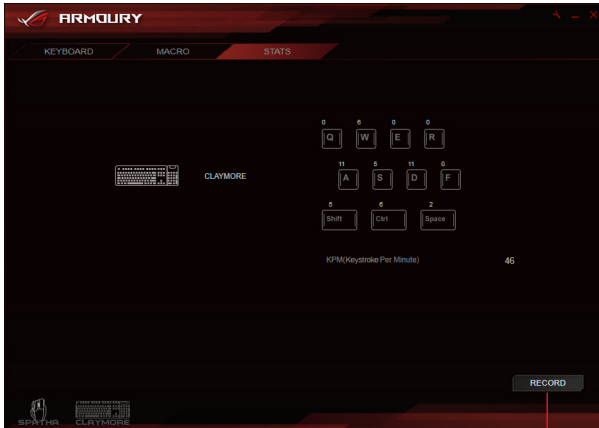
1. Select a macro profile.
2. Click the **RECORD** button to start recording the macro.
3. Click the **STOP** button when you have finished recording the macro.
4. You may adjust the settings of your recorded macro by clicking on the  button located in the top right corner.



5. Click **OK** once you have finished adjusting your macro, then click **SAVE** to save the changes made.

Stats menu

The stats menu lets you keep track of your keystrokes for certain keys.



Start recording the keystrokes for certain keys

Recording the keystrokes

1. Click on **RECORD** to begin recording the KPM.
2. Click **STOP** once you have finished recording.

Gaming Keyboard

Keyboard menu

The keyboard menu lets you set different lighting effects for your ROG keyboard, and customize or assign different functions, keys, or programs to different keyboard profiles of your ROG keyboard. You may also disable certain function keys whilst in gaming mode for an optimal gaming experience.



The screenshots in this section are for reference only and may vary according to ROG product connected.

Customize

Click on a key to configure / assign a different function, key, or program

Keyboard profiles


Disable / Enable key functions in gaming mode*

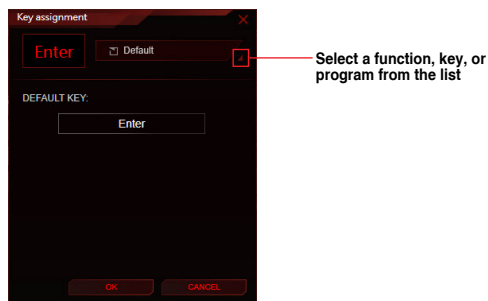
Motherboard fan speed control hotkey**

* The Windows key may be locked using the hotkey, FN + Windows key.

** The hotkeys are only available when motherboard Fan Xpert software and Armoury software are activated. This function is only supported on Intel Z97 or newer chipsets.

Assigning keys

1. Select a profile you wish to assign different keys.
2. Click on the **Customize** submenu.
3. Select a key from the on-screen keyboard.
4. Click on  and select a function, key, or program from the list, then click **OK**. See the list below for details on each option.



Option	Description
Default	Load the default settings for the selected key
Keyboard Function	Assign an entered keyboard key to the key
Mouse Function	Assign a selected mouse button to the key
Macro	Assign a macro to the key
Launch Program	Assign a program or website to the key
Multi-media	Assign a multimedia control function to the key
Windows Shortcuts	Assign a Windows shortcut function to the key
Disable	Disable the key

5. Click on **SAVE** to save the changes made to the selected profile.

Lighting



- In Lighting Sync mode the following Lighting related FN hotkeys will be disabled:
 - FN + up/down/left/right arrow
 - FN + 1/2/3/4/5/6 to change profiles
 - FN + R-G-B (Delete, End, and PageDown) to change lighting color
- FN + ROG SYNC will not be disabled. Pressing this hotkey whilst in Lighting Sync mode will end the sync.

Select the lighting effect for your keyboard

Customize the color settings for the selected lighting effect

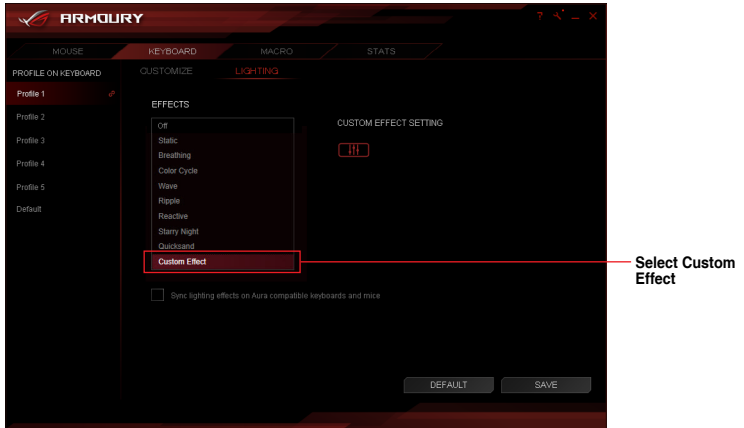
Keyboard profiles

Sync lighting effect with other Aura compatible keyboards and mice*

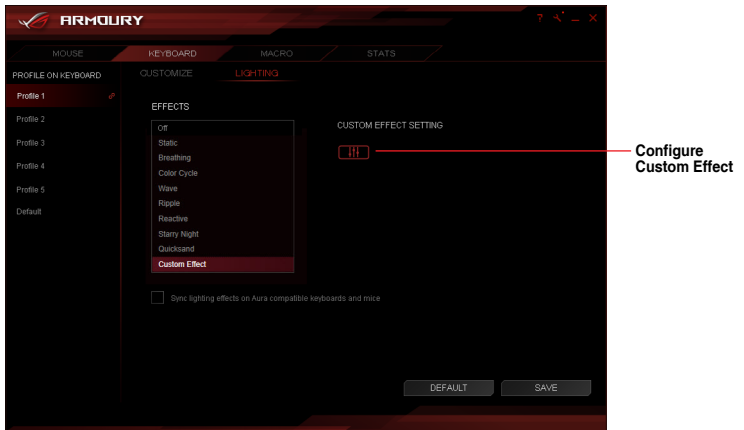
- * Hotkey: FN + PrintScreen is the alternative to enable lighting synchronization between Aura keyboard and mouse. When using hotkey, make sure Armoury software is working in the background. It will take about 10 seconds to start the synchronization.
- * To sync lighting effect between Aura compatible motherboards, keyboard and mouse, install the Aura software from motherboard's support site.
- * More information about Aura Sync, please visit: <https://www.asus.com/microsite/AURA/Sync.html>

Adding a custom lighting effect

1. Select a profile you wish to apply a custom lighting effect.
2. In the **Lighting** submenu, select **Custom Effect** from the effects list.



3. Click on **RGB** to configure Custom Effect.



- Click **+** then select from the list to add a new lighting effect.
- Select the keys on the keyboard or from the gaming presets you wish to apply lighting effects.
- Adjust the settings for the selected lighting effect then click **SAVE** to save the changes made on all effects.
- To add more effects to different keys, repeat steps 4-6.
- Once you have finished configuring your custom effects, click on **BACK** to return to the **Lighting** submenu.



- Each key may only be assigned a single lighting effect.
- Only the Static lighting effect may be assigned more than once, all other lighting effects may only be assigned once.

Deleting a custom lighting effect

- In the Custom Effect screen, select the custom effect you wish to delete.
- Click **[-]** to delete the effect.
- Once you have finished configuring your custom effects, click on **BACK** to return to the **Lighting** submenu.

Gaming Mouse

Mouse menu

The mouse menu lets you set different lighting effect, assign different functions for each button, and tweak your ROG mouse to your own gaming needs.



The screenshots in this section are for reference only and may vary according to ROG product connected.

Buttons

Click on a button to configure / assign a different function, key, or program

Link profile to a program

Mouse profiles

1 Left Click

2 Right Click

3 Scroll Click

4 Backward

5 Forward

6 DPI Switch

13 Scroll Up

14 Scroll Down

Top View Side View

DEFAULT SAVE

Switch the view of the mouse


Load default settings

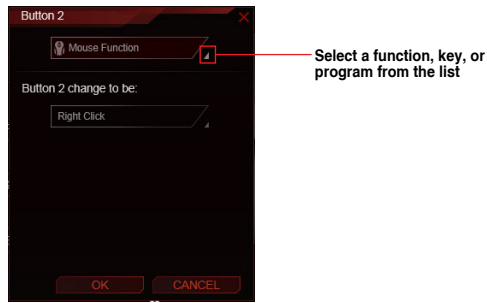
Save changes made to selected profile



The left mouse button may not be configured.

Assigning a button

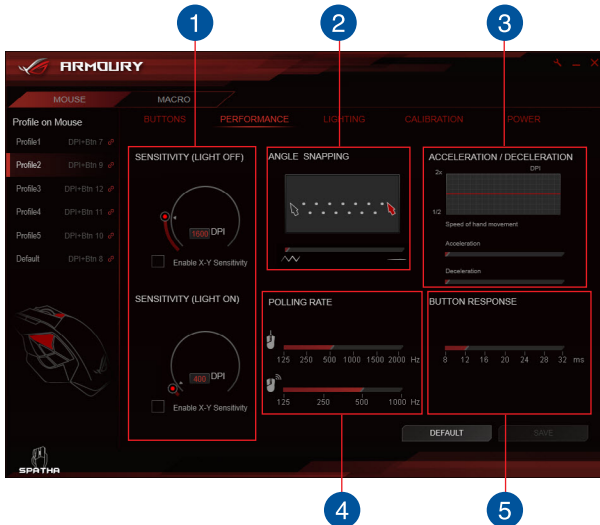
1. Select a profile you wish to assign different buttons.
2. Click on the **BUTTONS** submenu.
3. Switch between **Top View** and **Side View** to locate the button you wish to configure.
4. Select a button from the on-screen mouse.
5. Click on  and select a function, key, or program from the list, then click **OK**. See the list below for details on each option.



Option	Description
Mouse Function	Assign a mouse function to the button
Windows Shortcuts	Assign a Windows shortcut function to the button
Multimedia	Assign a multimedia control function to the button
Macro	Assign a macro to the button
Keyboard Function	Assign an entered keyboard key combination to the button * Keyboard Function supports up to three (3) keys.

6. Click on **SAVE** to save the changes made to the selected profile.

Performance



1 SENSITIVITY (LIGHT ON / OFF)

Set two different DPIs, then toggle between them by pressing the DPI button. When the light of the DPI button is on, the **SENSITIVITY (LIGHT ON)** option is enabled, when the light is off, the **SENSITIVITY (LIGHT OFF)** option is enabled.

2 ANGLE SNAPPING



This function allows you to adjust the mouse correction - a method which artificially smoothens out your mouse signal allowing you to draw straight lines. Drag the bar to the right for higher mouse correction, or drag the bar to the left for less mouse correction.

3 ACCELERATION / DECELERATION

This function allows you to adjust the speed your cursor accelerates / decelerates from one point to another.

4

POLLING RATE

This function controls the rate at which your mouse communicates with your processor in wired mode  or wireless mode . A higher polling rate (Hz) may increase the accuracy of your mouse movements, and also increase the amount of processing power required to communicate with your mouse.

5

BUTTON RESPONSE


This function allows you to adjust the button response time for the buttons on your mouse.

Lighting

Adjust the brightness of the lighting effects on your mouse in wired and wireless mode

Customize the color settings for the selected lighting effect

Wireless mode
Wired mode



Select the lighting effect for your mouse

Select the area to apply the lighting effect

Load default settings

Save changes made to selected profile

Calibration

Enable surface calibration options



Adjust the surface calibration distance

Load default settings

Save changes made to selected profile

Using Preset Surfaces

1. Select **Preset Surfaces**, then select a surface material from the list.
2. Click on **SAVE** to save the changes made.

Using Manual Calibration

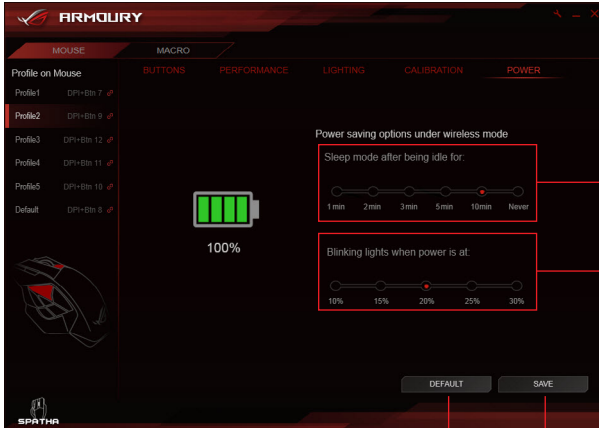
1. Select **Manual Calibrations**, then click **START**.
2. Move your mouse across the surface for a few seconds until the cursor starts to move on your screen.



For more accurate calibrations, use large movements when moving your mouse across the surface.

3. Once the manual calibration is completed, click on **OK**.
4. Click on **SAVE** to save the changes made.

Power



Set the time period before your mouse goes into sleep mode while in wireless mode

Set the power percentile your mouse lights will start to blink while in wireless mode

Load default settings

Save changes made to selected profile

