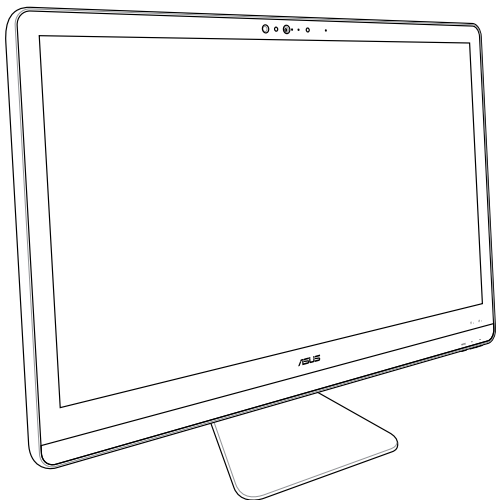


# ASUS Zen AiO™

## User Guide



*ZN22/ZN24/ZN27 series*

**HDMI™**  
HIGH-DEFINITION MULTIMEDIA INTERFACE

## **COPYRIGHT INFORMATION**

No part of this manual, including the products and software described in it, may be reproduced, transmitted, transcribed, stored in a retrieval system, or translated into any language in any form or by any means, except documentation kept by the purchaser for backup purposes, without the express written permission of ASUSTeK COMPUTER INC. ("ASUS").

ASUS PROVIDES THIS MANUAL "AS IS" WITHOUT WARRANTY OF ANY KIND, EITHER EXPRESS OR IMPLIED, INCLUDING BUT NOT LIMITED TO THE IMPLIED WARRANTIES OR CONDITIONS OF MERCHANTABILITY OR FITNESS FOR A PARTICULAR PURPOSE. IN NO EVENT SHALL ASUS, ITS DIRECTORS, OFFICERS, EMPLOYEES OR AGENTS BE LIABLE FOR ANY INDIRECT, SPECIAL, INCIDENTAL, OR CONSEQUENTIAL DAMAGES (INCLUDING DAMAGES FOR LOSS OF PROFITS, LOSS OF BUSINESS, LOSS OF USE OR DATA, INTERRUPTION OF BUSINESS AND THE LIKE), EVEN IF ASUS HAS BEEN ADVISED OF THE POSSIBILITY OF SUCH DAMAGES ARISING FROM ANY DEFECT OR ERROR IN THIS MANUAL OR PRODUCT.

Products and corporate names appearing in this manual may or may not be registered trademarks or copyrights of their respective companies, and are used only for identification or explanation and to the owners' benefit, without intent to infringe.

SPECIFICATIONS AND INFORMATION CONTAINED IN THIS MANUAL ARE FURNISHED FOR INFORMATIONAL USE ONLY, AND ARE SUBJECT TO CHANGE AT ANY TIME WITHOUT NOTICE, AND SHOULD NOT BE CONSTRUED AS A COMMITMENT BY ASUS. ASUS ASSUMES NO RESPONSIBILITY OR LIABILITY FOR ANY ERRORS OR INACCURACIES THAT MAY APPEAR IN THIS MANUAL, INCLUDING THE PRODUCTS AND SOFTWARE DESCRIBED IN IT.

Copyright © 2017 ASUSTeK COMPUTER INC. All Rights Reserved.

## **LIMITATION OF LIABILITY**

Circumstances may arise where because of a default on ASUS' part or other liability, you are entitled to recover damages from ASUS. In each such instance, regardless of the basis on which you are entitled to claim damages from ASUS, ASUS is liable for no more than damages for bodily injury (including death) and damage to real property and tangible personal property; or any other actual and direct damages resulted from omission or failure of performing legal duties under this Warranty Statement, up to the listed contract price of each product.

ASUS will only be responsible for or indemnify you for loss, damages or claims based in contract, tort or infringement under this Warranty Statement.

This limit also applies to ASUS' suppliers and its reseller. It is the maximum for which ASUS, its suppliers, and your reseller are collectively responsible.

UNDER NO CIRCUMSTANCES IS ASUS LIABLE FOR ANY OF THE FOLLOWING: (1) THIRD-PARTY CLAIMS AGAINST YOU FOR DAMAGES; (2) LOSS OF, OR DAMAGE TO, YOUR RECORDS OR DATA; OR (3) SPECIAL, INCIDENTAL, OR INDIRECT DAMAGES OR FOR ANY ECONOMIC CONSEQUENTIAL DAMAGES (INCLUDING LOST PROFITS OR SAVINGS), EVEN IF ASUS, ITS SUPPLIERS OR YOUR RESELLER IS INFORMED OF THEIR POSSIBILITY.

## **SERVICE AND SUPPORT**

Visit our multi-language web site at <https://www.asus.com/support>

# Contents

About this manual.....	6
Conventions used in this manual .....	7
Typography.....	7
Icons .....	8
Safety information.....	9
Setting up your system.....	9
Care during use .....	9
Sound Pressure Warning.....	11
DC Fan Warning.....	11
Package contents .....	12

## Chapter 1: Hardware Setup

ASUS Zen AiO PC (ZN27) .....	13
Front view.....	13
Rear view .....	16
ASUS Zen AiO PC (ZN24) .....	19
Front view.....	19
Rear view .....	21
ASUS Zen AiO PC (ZN22).....	24
Front view.....	24
Rear view .....	26

## Chapter 2: Using your ASUS All-in-One PC

Positioning your ASUS All-in-One PC .....	29
Setting up your ASUS All-in-One PC.....	30
Connecting a wired keyboard and mouse .....	30
Connecting the wireless keyboard and mouse (on selected models) .....	31
Powering on the system.....	32
Using the touch screen (on selected models).....	34
Using touch screen panel gestures (on selected models) .....	35

## Chapter 3: Working with Windows® 10

Starting for the first time.....	39
Start menu .....	40
Launching the Start menu .....	41
Opening programs from the Start menu .....	41
Windows® apps .....	42
Working with Windows® apps.....	43
Customizing Windows® apps .....	43
Task view .....	46
Snap feature .....	47
Snap hotspots.....	47
Action Center .....	49
Other keyboard shortcuts .....	50
Connecting to wireless networks .....	52
Wi-Fi.....	52
Bluetooth .....	53
Connecting to wired networks.....	54
Configuring a dynamic IP/PPPoE network connection .....	54
Configuring a static IP network connection .....	55
Turning your ASUS All-in-One PC off.....	56
Putting your ASUS All-in-One PC to sleep .....	57

## Chapter 4: Recovering your system

Entering the BIOS Setup.....	59
Quickly enter the BIOS.....	59
Recovering your system.....	60
Performing a recovery option.....	61

## Appendices

Notices.....	63
Federal Communication Commission Interference Statement.....	63
RF exposure warning.....	64
Radio Frequency (RF) Exposure Information.....	66
Wireless Operation Channel for Different Domains.....	66
CE Mark Warning.....	66
REACH.....	68
Global Environmental Regulation Compliance and Declaration.....	68
ASUS Recycling/Takeback Services.....	68
Coating Notice.....	69
Prevention of Hearing Loss.....	69
ENERGY STAR complied product.....	70

# About this manual

This manual provides information about the hardware and software features of your ASUS All-in-One PC, organized through the following chapters:

## **Chapter 1: Hardware Setup**

This chapter details the hardware components of your ASUS All-in-One PC.

## **Chapter 2: Using your ASUS All-in-One PC**

This chapter provides you with information on using your ASUS All-in-One PC.

## **Chapter 3: Working with Windows® 10**

This chapter provides an overview of using Windows® 10 in your ASUS All-in-One PC.

## **Chapter 4: Recovering your system**

This chapter provides recovery options for your ASUS All-in-One PC.

## **Appendices**

This section includes notices and safety statements for your ASUS All-in-One PC.

## Conventions used in this manual

To highlight key information in this manual, some texts are presented as follows:

---

**IMPORTANT!** This message contains vital information that must be followed to complete a task.

---

---

**NOTE:** This message contains additional information and tips that can help complete tasks.

---

---

**WARNING!** This message contains important information that must be followed to keep you safe while performing tasks and prevent damage to your device's data and components.

---

## Typography

**Bold** = This indicates a menu or an item that must be selected.

*Italic* = This indicates sections that you can refer to in this manual.

## Icons

The icons below indicate the devices you can use for completing a series of tasks or procedures on your ASUS All-in-One PC.



= Use the touch screen panel (on selected models).



= Use the mouse.



= Use the keyboard.

All illustrations and screenshots in this manual are for reference only. Actual product specifications and software screen images may vary with territories. Visit the ASUS website at [www.asus.com](http://www.asus.com) for the latest information.



## Safety information

Your ASUS All-in-One PC is designed and tested to meet the latest standards of safety for information technology equipment. However, to ensure your safety, it is important that you read the following safety instructions.

### Setting up your system

- Read and follow all instructions in the documentation before you operate your system.
- Do not use this product near water or a heated source such as a radiator.
- Set up the system on a stable surface.
- Openings on the chassis are for ventilation. Do not block or cover these openings. Ensure that you leave plenty of space around the system for ventilation. Never insert objects of any kind into the ventilation openings.
- Use this product in environments with ambient temperatures between 0°C and 40°C.
- If you use an extension cord, ensure that the total ampere rating of the devices plugged into the extension cord does not exceed its ampere rating.

### Care during use

- Do not walk on the power cord or allow anything to rest on it.
- Do not spill water or any other liquids on your system.
- When the system is turned off, a small amount of electrical current still remains in the product. Always unplug all power, modem, and network cables from the power outlets before cleaning the system.

- The touch screen requires periodic cleaning to perform at optimal touch sensitivity. Keep the screen clean from foreign objects or excessive dust accumulation. To clean the screen:
  - Turn off the system and disconnect the power cord from the wall.
  - Spray a small amount of household glass cleaner on the supplied cleaning cloth and gently wipe the surface of the screen.
  - Do not spray the cleaner directly on the screen.
- Do not use an abrasive cleaner or a coarse cloth when cleaning the screen.
- If you encounter the following technical problems with the product, unplug the power cord and contact a qualified service technician or your retailer.
  - The power cord or plug is damaged.
  - Liquid has been spilled into the system.
  - The system does not function properly even if you follow the operating instructions.
  - The system was dropped or the cabinet is damaged.
  - The system performance changes.

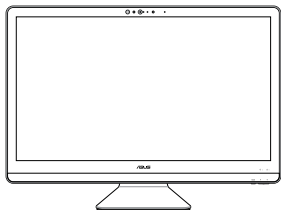
## **Sound Pressure Warning**

Excessive sound pressure from earphones or headphones can cause hearing loss or permanent damage to hearing. Increasing the volume and equalizer beyond default levels increases the output voltage and sound pressure produced by the earphones or headphones.

## **DC Fan Warning**

Please note that the DC fan is a moving part and can cause harm when used improperly. Keep away from the fan when using the product.

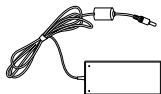
# Package contents



ASUS Zen AiO PC



Power cord



AC power adapter



Keyboard



Mouse



KBM USB receiver dongle  
(for wireless KBM only)



Warranty card

---

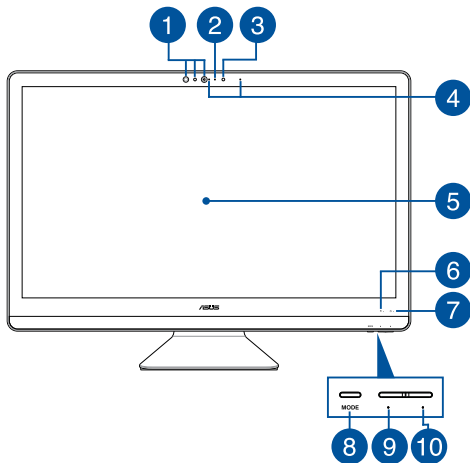
## NOTE:

- If any of the items is damaged or missing, contact your retailer.
  - The ASUS All-in-One PC illustration is for reference only. Actual product specifications may vary with models .
  - The keyboard, mouse, and power supply illustrations are for reference only. Actual product specifications may vary with territories.
-

# Chapter 1: Hardware Setup

## ASUS Zen AiO PC (ZN27)

### Front view



**1**

### **IR Camera (on selected models)**

The built-in camera supports facial recognition when using Windows Hello.

---

**NOTE:**

- When you sign in with Windows Hello, the set up screen will be in black and white color.
  - The red IR LED blinks in the process while data is being read before you sign in with Windows Hello facial recognition.
- 

**2**

### **Camera indicator**

The camera indicator lights up when the built-in camera is in use.

**3**

### **Camera**

The built-in camera allows you to take pictures or record videos using your ASUS All-in-One PC.

**4**

### **Array microphones**

The array microphones feature echo canceling, noise suppression, and beam forming functions for better voice recognition and audio recording.

**5**

### **LCD display**

The LCD display panel provides excellent viewing features for photos, videos, and other multimedia files.

On selected models, multi-touch is supported. You can operate your ASUS All-in-One PC using touch gestures.

**6**

### **Drive activity indicator**

This indicator lights up when your ASUS All-in-One PC is accessing the internal storage drives.

7

#### **Power indicator**

This LED power indicator lights up when the ASUS All-in-One PC is turned on.

8

#### **Mode button**

Touch to switch the display signal source. When switched to HDMI-in, the ASUS All-in-One PC can be used as a standard desktop LCD monitor.

9

#### **Mode down button**

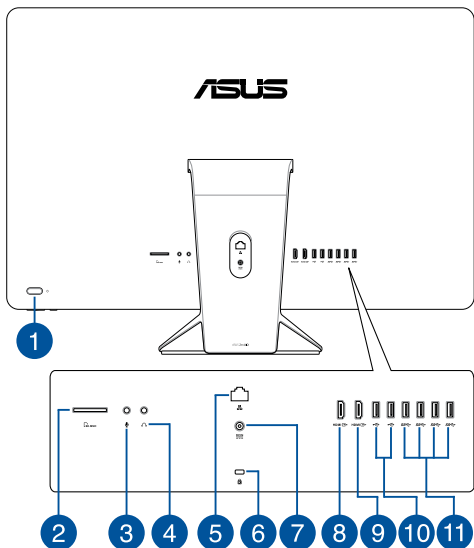
You can use this button to decrease the value of brightness in HDMI Input mode.

10

#### **Mode up button**

You can use this button to increase the value of brightness in HDMI Input mode.

## Rear view



1

### Power button

Press this button to turn on your ASUS All-in-One PC.

2

### MicroSD card slot

This built-in memory card reader slot supports SD, and MMC card formats.

3

### Microphone jack

The microphone jack is designed to connect to a microphone used for video conferencing, voice narrations, or simple audio recordings.



4

### Headphone jack

This port allows you to connect amplified speakers or headphones.

5

### LAN port

The eight-pin RJ-45 LAN port supports a standard Ethernet cable for connection to a local network.

6

### Kensington® security slot

The Kensington® security slot allows you to secure your ASUS All-in-One PC using Kensington® compatible security products.

7

### Power input

The bundled power adapter converts AC power to DC power for use with this jack. Power supplied through this jack supplies power to the ASUS All-in-One PC. To prevent damage to the ASUS All-in-One PC, always use the bundled power adapter.

---

**WARNING!** The power adapter may become warm or hot when in use. Do not cover the adapter and keep it away from your body.

---

8

### HDMI input port

This port is for a HDMI (High-Definition Multimedia Interface) connector and is HDCP compliant for HD DVD, Blu-ray, and other protected content playback.

9

### HDMI output port

This port allows you to connect your ASUS All-in-One PC to another HDMI-compatible device for file sharing or extending your display monitor.

10

### **USB 2.0 port**

This USB (Universal Serial Bus) port is compatible with USB 2.0 or USB 1.1 devices such as keyboards, pointing devices, flash disk drives, external HDDs, speakers, cameras and printers.

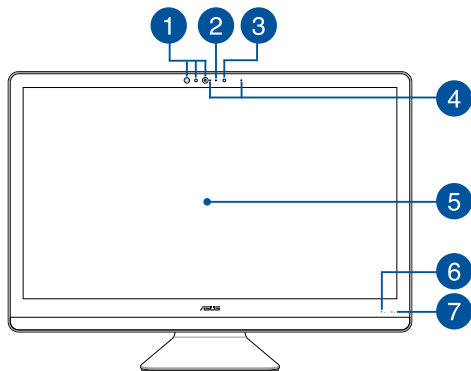
11

### **USB 3.1 Gen1 port**

This USB 3.1 Gen1 (Universal Serial Bus) port provides a transfer rate of up to 5 Gbit/s and is backward compatible to USB 2.0.

# ASUS Zen AiO PC (ZN24)

## Front view



1

### IR Camera (on selected models)

The built-in camera supports facial recognition when using Windows Hello.

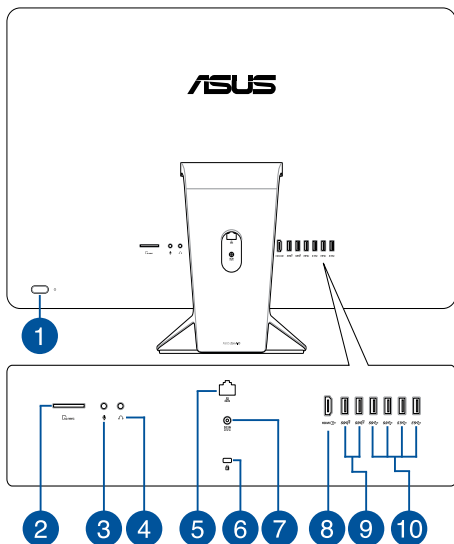
---

#### NOTE:

- When you sign in with Windows Hello, the set up screen will be in black and white color.
  - The red IR LED blinks in the process while data is being read before you sign in with Windows Hello facial recognition.
-

- 2** **Camera indicator**  
The camera indicator lights up when the built-in camera is in use.
- 3** **Camera**  
The built-in camera allows you to take pictures or record videos using your ASUS All-in-One PC.
- 4** **Array microphones**  
The array microphones feature echo canceling, noise suppression, and beam forming functions for better voice recognition and audio recording.
- 5** **LCD display**  
The LCD display panel provides excellent viewing features for photos, videos, and other multimedia files.  
  
On selected models, multi-touch is supported. You can operate your ASUS All-in-One PC using touch gestures.
- 6** **Drive activity indicator**  
This indicator lights up when your ASUS All-in-One PC is accessing the internal storage drives.
- 7** **Power indicator**  
This LED power indicator lights up when the ASUS All-in-One PC is turned on.

## Rear view



1

### Power button

Press this button to turn on your ASUS All-in-One PC.

2

### MicroSD card slot

This built-in memory card reader slot supports SD, and MMC card formats.

3

### Microphone jack

The microphone jack is designed to connect to a microphone used for video conferencing, voice narrations, or simple audio recordings.

4

### Headphone jack

This port allows you to connect amplified speakers or headphones.

5

### LAN port

The eight-pin RJ-45 LAN port supports a standard Ethernet cable for connection to a local network.

6

### Kensington® security slot

The Kensington® security slot allows you to secure your ASUS All-in-One PC using Kensington® compatible security products.

7

### Power input

The bundled power adapter converts AC power to DC power for use with this jack. Power supplied through this jack supplies power to the ASUS All-in-One PC. To prevent damage to the ASUS All-in-One PC, always use the bundled power adapter.

---

**WARNING!** The power adapter may become warm or hot when in use. Do not cover the adapter and keep it away from your body.

---

8

### HDMI output port

This port allows you to connect your ASUS All-in-One PC to another HDMI-compatible device for file sharing or extending your display monitor.

9

### USB 3.1 Gen2 port

This USB 3.1 Gen2 (Universal Serial Bus 3.1) port provides a transfer rate of up to 10 Gbit/s and is backward compatible to USB 2.0.

### USB 2.0 port

This USB (Universal Serial Bus) port is compatible with USB 2.0 or USB 1.1 devices such as keyboards, pointing devices, flash disk drives, external HDDs, speakers, cameras and printers.

---

**NOTE:**

- Transfer rate of this port may vary per model.
  - This port may vary per model.
- 

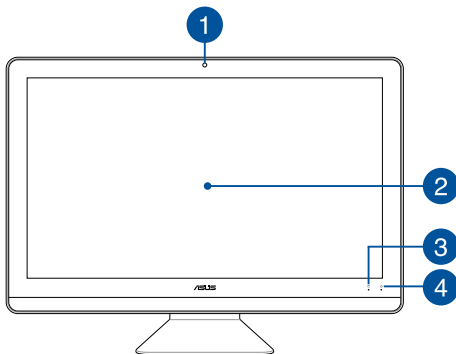
10

### USB 3.1 Gen1 port

This USB 3.1 Gen1 (Universal Serial Bus) port provides a transfer rate of up to 5 Gbit/s and is backward compatible to USB 2.0.

# ASUS Zen AiO PC (ZN22)

## Front view



1

### Camera

The built-in camera allows you to take pictures or record videos using your ASUS All-in-One PC.

2

### LCD display

The LCD display panel provides excellent viewing features for photos, videos, and other multimedia files.

On selected models, multi-touch is supported. You can operate your ASUS All-in-One PC using touch gestures.



3

### **Drive activity indicator**

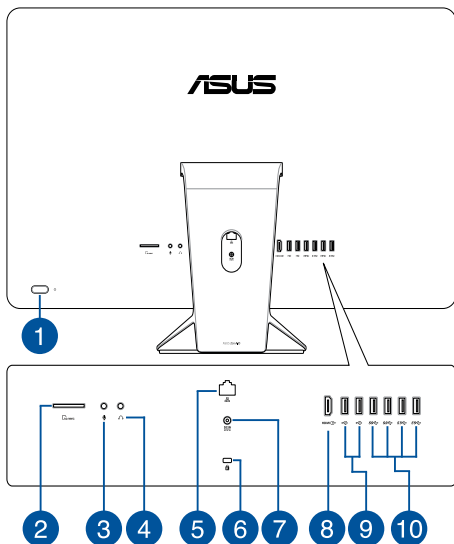
This indicator lights up when your ASUS All-in-One PC is accessing the internal storage drives.

4

### **Power indicator**

This LED power indicator lights up when the ASUS All-in-One PC is turned on.

## Rear view



1

### Power button

Press this button to turn on your ASUS All-in-One PC.

2

### MicroSD card slot

This built-in memory card reader slot supports SD, and MMC card formats.

3

### Microphone jack

The microphone jack is designed to connect to a microphone used for video conferencing, voice narrations, or simple audio recordings.

4

#### Headphone jack

This port allows you to connect amplified speakers or headphones.

5

#### LAN port

The eight-pin RJ-45 LAN port supports a standard Ethernet cable for connection to a local network.

6

#### Kensington® security slot

The Kensington® security slot allows you to secure your ASUS All-in-One PC using Kensington® compatible security products.

7

#### Power input

The bundled power adapter converts AC power to DC power for use with this jack. Power supplied through this jack supplies power to the ASUS All-in-One PC. To prevent damage to the ASUS All-in-One PC, always use the bundled power adapter.

---

**WARNING!** The power adapter may become warm or hot when in use. Do not cover the adapter and keep it away from your body.

---

8

#### HDMI output port

This port allows you to connect your ASUS All-in-One PC to another HDMI-compatible device for file sharing or extending your display monitor.

9

### **USB 2.0 port**

This USB (Universal Serial Bus) port is compatible with USB 2.0 or USB 1.1 devices such as keyboards, pointing devices, flash disk drives, external HDDs, speakers, cameras and printers.

10

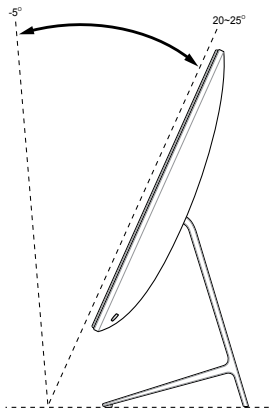
### **USB 3.1 Gen1 port**

This USB 3.1 Gen1 (Universal Serial Bus) port provides a transfer rate of up to 5 Gbit/s and is backward compatible to USB 2.0.

# Chapter 2:

## Using your ASUS All-in-One PC

### Positioning your ASUS All-in-One PC



1. Place your ASUS All-in-One PC on a flat surface such as a table or desk.
2. Tilt the display to an angle between  $-5^{\circ}$  to  $25^{\circ}$  for ZN22 and ZN24, or to an angle between  $-5^{\circ}$  to  $20^{\circ}$  for ZN27.

---

#### **IMPORTANT!**

- Use both hands when setting up your ASUS All-in-One PC.
  - Avoid adjusting the display to an angle beyond the recommended values or you may risk damaging the ASUS All-in-One PC.
-

# Setting up your ASUS All-in-One PC

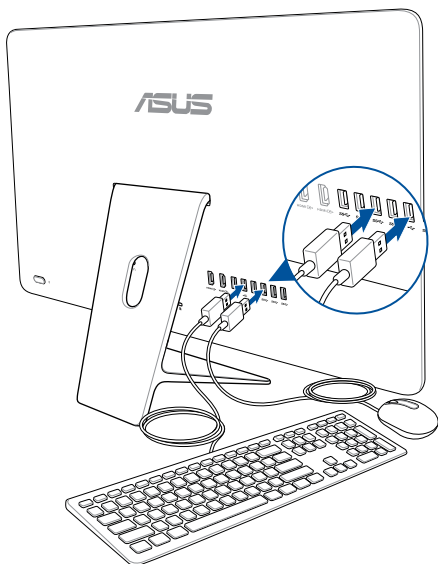
---

**NOTE:** The illustrations in this section are for reference only. The appearance of your ASUS All-in-One PC may vary depending on model.

---

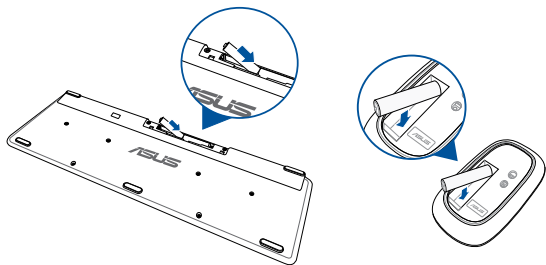
## Connecting a wired keyboard and mouse

Connect the keyboard and the mouse to the USB ports on the rear panel.

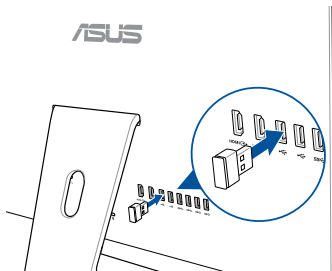


## Connecting the wireless keyboard and mouse (on selected models)

1. Install batteries into the wireless keyboard and mouse.



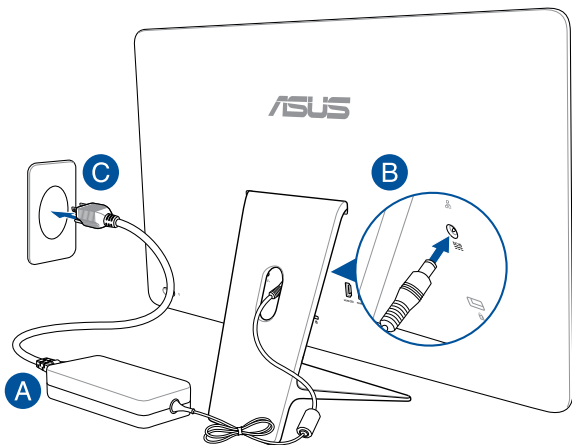
2. Connect the wireless dongle for keyboard and mouse to the USB 2.0 ports to automatically pair both devices to your ASUS All-in-One PC.



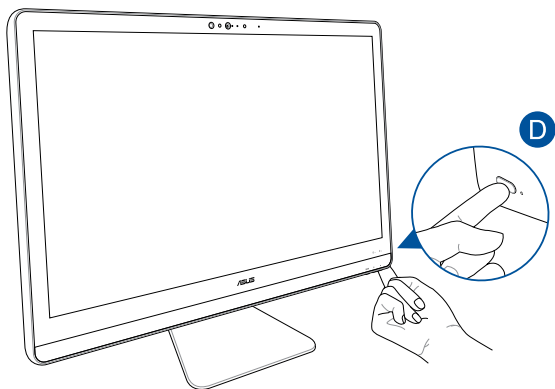
3. You can begin using the wireless keyboard and mouse.

## Powering on the system

- A. Connect the AC power cord to the AC/DC adapter.
- B. Connect the DC power connector into your ASUS All-in-One PC's power (DC) input.
- C. Plug the AC power adapter into a 100V~240V power source.
- D. Press the power button.







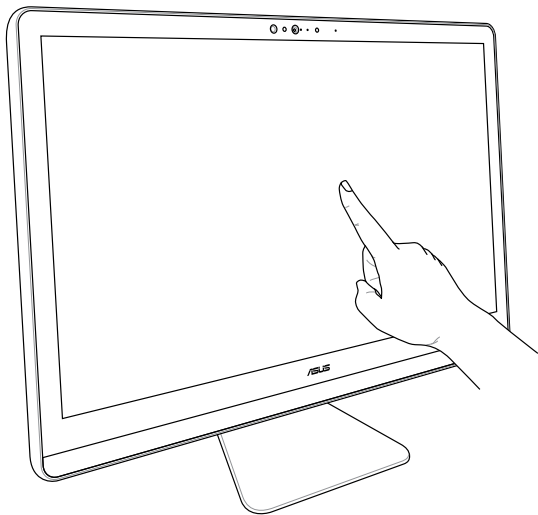
---

**NOTE:** For details on turning off your ASUS All-in-One PC, refer to the section *Turning your ASUS All-in-One PC off in Working with Windows®10*.

---

## Using the touch screen (on selected models)

The LCD screen panel of your ASUS All-in-One PC provides excellent viewing features for photos, videos, and other multimedia files on your PC.



---

**NOTE:** The illustration above is for reference only. The appearance of your ASUS All-in-One PC may vary depending on model.

---

## Using touch screen panel gestures (on selected models)

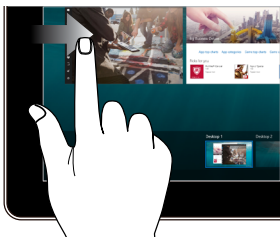
---

**NOTE:** The following screenshots are for reference only. The touch screen panel's appearance may vary depending on model.

---

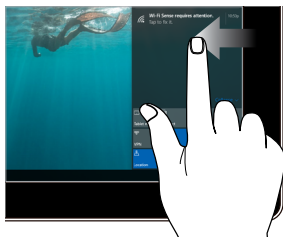
The gestures allow you to launch programs and access the settings of your ASUS All-in-One PC. The functions can be activated by using the hand gestures on your ASUS All-in-One PC's touch screen panel.

### Left edge swipe



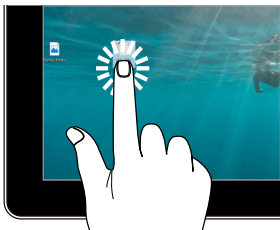
Swipe from the left edge of the screen to launch **Task view**.

### Right edge swipe



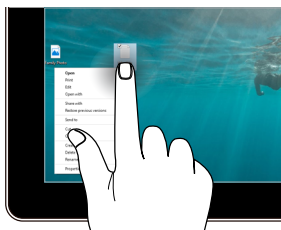
Swipe from the right edge of the screen to launch **Action Center**.

## Tap/Double-tap



- Tap an app to select it.
- Double-tap an app to launch it.

## Press and hold



Press and hold to open the right-click menu.

## Zoom in



Spread apart your two fingers on the touch screen panel.

## Zoom out



Bring together your two fingers on the touch screen panel.

## Finger slide



Slide your finger to scroll up and down and slide your finger to pan the screen left or right.

## Drag



- Drag to create a selection box around multiple items.
- Drag and drop an item to move it to a new location.



# Chapter 3:

## Working with Windows® 10

### Starting for the first time

When you start your ASUS All-in-One PC for the first time, a series of screens appear to guide you in configuring your Windows® 10 operating system.

To start your ASUS All-in-One PC for the first time:

1. Press the power button on your ASUS All-in-One PC. Wait for a few minutes until the setup screen appears.
2. From the setup screen, pick your region and a language to use on your ASUS All-in-One PC.
3. Carefully read the License Terms. Select **I accept**.
4. Follow the onscreen instructions to configure the following basic items:
  - Personalize
  - Get online
  - Settings
  - Your account
5. After configuring the basic items, Windows® 10 proceeds to install your apps and preferred settings. Ensure that your ASUS All-in-One PC is kept powered on during the setup process.
6. Once the setup process is complete, the Desktop appears.

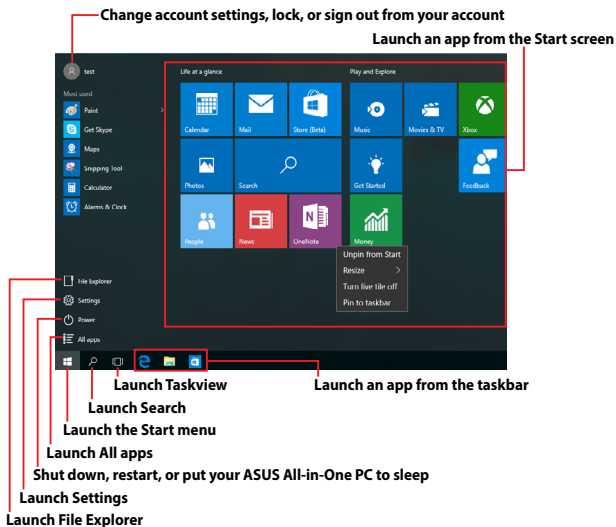
---

**NOTE:** The screenshots in this chapter are for reference only.

---

# Start menu

The Start menu is the main gateway to your ASUS All-in-One PC's programs, Windows® apps, folders, and settings.



You can use the Start menu to do these common activities:

- Start programs or Windows® apps
- Open commonly used programs or Windows® apps
- Adjust ASUS All-in-One PC settings
- Get help with the Windows operating system
- Turn off your ASUS All-in-One PC
- Log off from Windows or switch to a different user account




## Launching the Start menu



Tap the Start button  in the lower-left corner of your desktop.



Position your mouse pointer over the Start button  in the lower-left corner of your desktop then click it.



Press the Windows logo key  on your keyboard.

## Opening programs from the Start menu

One of the most common uses of the Start menu is opening programs installed on your ASUS All-in-One PC.



Tap the program to launch it.



Position your mouse pointer over the program then click to launch it.



Use the arrow keys to browse through the programs.

Press  to launch it.

---

**NOTE:** Select **All apps** at the bottom of the left pane to display a full list of programs and folders on your ASUS All-in-One PC in alphabetical order.

---

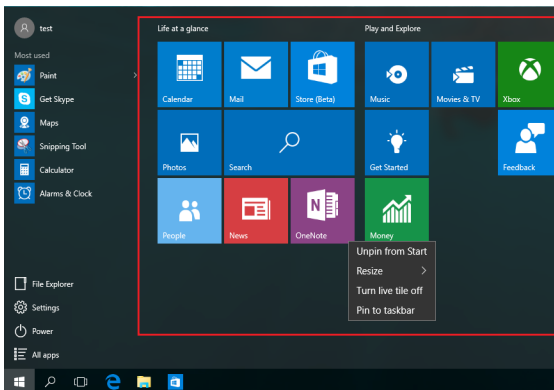
# Windows® apps

These are apps pinned on the right pane of the Start menu and displayed in tiled-format for easy access.

---

**NOTE:** Some Windows® apps require signing in to your Microsoft account before they are fully launched.

---



## Working with Windows® apps

Use your ASUS All-in-One PC's touch screen, mouse, or keyboard to launch, customize, and close apps.

### Launching Windows® apps from the Start menu



Tap the app to launch it.



Position your mouse pointer over the app then click to launch it.



Use the arrow keys to browse through the apps. Press



to launch an app.

## Customizing Windows® apps

You can move, resize, unpin, or pin apps to the taskbar from the Start menu using the following steps:

### Moving apps




Press and hold the app, then drag and drop it to a new location.



Position your mouse pointer over the app, then drag and drop the app to a new location.

## Resizing apps




Press and hold the app, then tap  and select an app tile size.




Position your mouse pointer over the app and right-click it, then click **Resize** and select an app tile size.



Use the arrow keys to navigate to the app. Press , then select **Resize** and select an app tile size.

## Unpinning apps




Press and hold the app, then tap the  icon.



Position your mouse pointer over the app and right-click it, then click **Unpin from Start**.



Use the arrow keys to navigate to the app. Press , then select **Unpin from Start**.

## Pinning apps to the taskbar




Press and hold the app, then tap **Pin to taskbar**.



Position your mouse pointer over the app and right-click it, then click **Pin to taskbar**.



Use the arrow keys to navigate to the app. Press , then select **Pin to taskbar**.

## Pinning more apps to the Start menu




From **All apps**, press and hold the app you want to add to the Start menu, then tap **Pin to Start**.



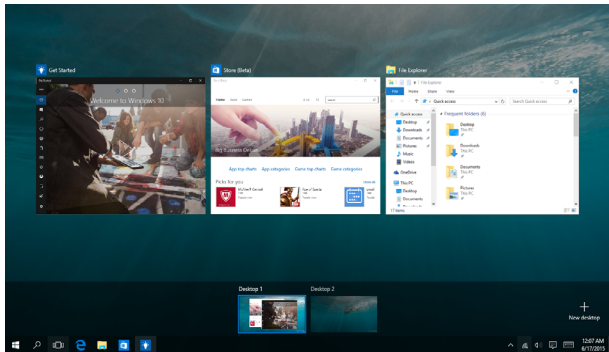
From **All apps**, position your mouse pointer over the app you want to add to the Start menu and right-click it, then click **Pin to Start**.



From **All apps**, press  on the app that you want to add to the Start menu, then select **Pin to Start**.

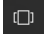
# Task view

Quickly switch between opened apps and programs using the task view feature, you can also use task view to switch between desktops.

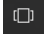


## Launching task view



Tap the  icon on the taskbar or swipe from the left edge of the screen.



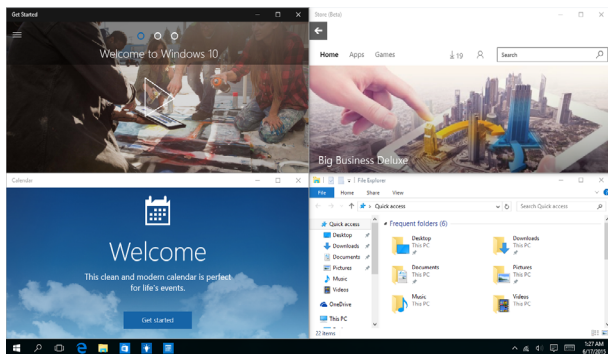
Position your mouse pointer over the  icon on the taskbar and click it.



Press  +  on your keyboard.

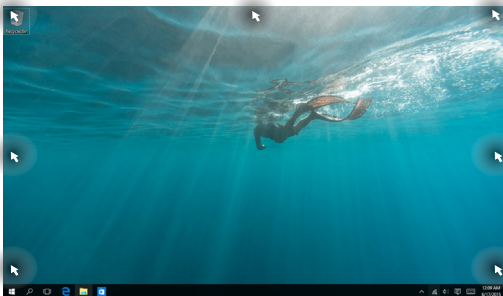
# Snap feature

The Snap feature displays apps side-by-side, allowing you to work or switch between apps.



# Snap hotspots

You can drag and drop apps to these hotspots to snap them into place.



## Using Snap




or



1. Launch the app you wish to snap.
2. Drag the title bar of your app and drop the app to the edge of the screen to snap.
3. Launch another app and repeat the above steps to snap another app.

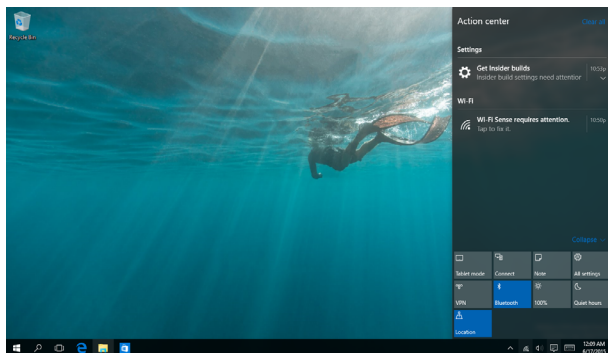


1. Launch the app you wish to snap.
2. Press and hold the  key, then use the arrow keys to snap the app.
3. Launch another app and repeat the above steps to snap another app.




# Action Center

Action Center consolidates notifications from apps and presents a single place where you can interact with them. It also has a really useful Quick Actions section at the bottom.




## Launching Action Center


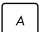


Click the  icon on the taskbar or swipe from the right edge of the screen.



Position your mouse pointer over the  icon on the taskbar and click it.



Press  +  on your keyboard.

## Other keyboard shortcuts

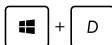
Using the keyboard, you can also use the following shortcuts to help you launch applications and navigate Windows® 10.



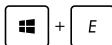
Launches **Start menu**



Launches **Action Center**



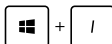
Launches the desktop



Launches the **File Explorer**



Opens the **Share** panel



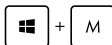
Launches **Settings**



Launches **Connect** panel



Activates the Lock screen



Minimizes all currently active windows



Launches **Search**



Launches **Project** panel



Opens the **Run** window



Opens **Ease of Access Center**



Opens the context menu of the Start button



Launches the magnifier icon and zooms in your screen



Zooms out your screen



Opens **Narrator Settings**

# Connecting to wireless networks

## Wi-Fi

Access emails, surf the Internet, and share applications via social networking sites using your ASUS All-in-One PC's Wi-Fi connection.


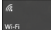
### Connecting Wi-Fi

Connect your ASUS All-in-One PC to a Wi-Fi network by using the following steps:



or



1. Select the  icon from the taskbar.
2. Select the  icon to enable Wi-Fi.
3. Select an access point from the list of available Wi-Fi connections.
4. Select **Connect** to start the network connection.

---

**NOTE:** You may be prompted to enter a security key to activate the Wi-Fi connection.

---

## Bluetooth

Use Bluetooth to facilitate wireless data transfers with other Bluetooth-enabled devices.

### Pairing with other Bluetooth-enabled devices

You need to pair your ASUS All-in-One PC with other Bluetooth-enabled devices to enable data transfers. Connect your devices by using the following steps:



or



1. Launch **Settings** from the Start menu.
2. Select **Devices**, then select **Bluetooth** to search for Bluetooth-enabled devices.
3. Select a device from the list. Compare the passcode on your ASUS All-in-One PC with the passcode sent to your chosen device. If they are the same, select **Yes** to successfully pair your ASUS All-in-One PC with the device.

---

**NOTE:** For some bluetooth-enabled devices, you may be prompted to key in the passcode of your ASUS All-in-One PC.

---

## Connecting to wired networks

You can also connect to wired networks, such as local area networks and broadband Internet connection, using your ASUS All-in-One PC's LAN port.

---

**NOTE:** Contact your Internet Service Provider (ISP) for details or your network administrator for assistance in setting up your Internet connection.

---

To configure your settings, refer to the following procedures.

---

**IMPORTANT!** Ensure that a network cable is connected between your ASUS All-in-One PC's LAN port and a local area network before performing the following actions.

---

## Configuring a dynamic IP/PPPoE network connection



or




1. Launch **Settings**.
2. Select **Network & Internet**.
3. Select **Ethernet > Network and Sharing Center**.
4. Select your LAN then select **Properties**.
5. Select **Internet Protocol Version 4(TCP/IPv4)** then select **Properties**.
6. Select **Obtain an IP address automatically** then select **OK**.

---

**NOTE:** Proceed to the next steps if you are using PPPoE connection.

---

- Return to the **Network and Sharing Center** window then select **Set up a new connection or network**.
- Select **Connect to the Internet** then select **Next**.
- Select **Broadband (PPPoE)**.
- Type your User name, Password, and Connection name then select **Connect**.
- Select **Close** to finish the configuration.
- Select  on the taskbar then select the connection you just created.
- Type your user name and password then select **Connect** to start connecting to the Internet.

## Configuring a static IP network connection



or



- Repeat steps 1 to 5 under *Configuring a dynamic IP/PPPoE network connection*.
- Select **Use the following IP address**.
- Type the IP address, Subnet mask and Default gateway from your service provider.
- If needed, you can also type the preferred DNS server address and alternate DNS server address then select **OK**.


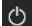
# Turning your ASUS All-in-One PC off

You can turn off your ASUS All-in-One PC by doing either of the following procedures:





or



- Launch the Start menu, then select  **Power** > **Shut down** to do a normal shutdown.
- From the log-in screen, select  > **Shut down**.



- Press  +  to launch Shut Down Windows. Select **Shut Down** from the drop-down list then select **OK**.
- If your ASUS All-in-One PC is unresponsive, press and hold the power button for at least four (4) seconds until your ASUS All-in-One PC turns off.




# Putting your ASUS All-in-One PC to sleep


To put your ASUS All-in-One PC to Sleep mode:



or



- Launch the Start menu, then select  **Power** > **Sleep** to put your ASUS All-in-One PC to sleep.

- From the log-in screen, select  > **Sleep**.



Press  +  to launch Shut Down Windows.

Select **Sleep** from the drop-down list then select **OK**.

---

**NOTE:** You can also put your ASUS All-in-One PC to Sleep mode by pressing the power button once.

---



# Chapter 4: Recovering your system

## Entering the BIOS Setup

BIOS (Basic Input and Output System) stores system hardware settings that are needed for system startup in the ASUS All-in-One PC.

In normal circumstances, the default BIOS settings apply to most conditions to ensure optimal performance. Do not change the default BIOS settings except in the following circumstances:

- An error message appears on the screen during the system bootup and requests you to run the BIOS Setup.
- You have installed a new system component that requires further BIOS settings or update.

---

**WARNING!** Inappropriate BIOS settings may result to instability or boot failure. We strongly recommend that you change the BIOS settings only with the help of a trained service personnel.

---

## Quickly enter the BIOS

To access the BIOS:

- When your ASUS All-in-One PC is off, press the power button for at least four (4) seconds to access the BIOS directly.
- Press the power button to turn on your ASUS All-in-One PC then press <F2> or <Del> during POST.

---

**NOTE:** POST (Power-On Self-Test) is a series of software controlled diagnostic tests that run when you turn on your ASUS All-in-One PC.

---

## Recovering your system

Using recovery options on your ASUS All-in-One PC allows you to restore the system to its original state or simply refresh its settings to help improve performance.

---

### IMPORTANT!

- Backup all your data files before doing any recovery option on your ASUS All-in-One PC.
  - Note down important customized settings such as network settings, user names, and passwords to avoid data loss.
  - Ensure that your ASUS All-in-One PC is plugged in to a power source before resetting your system.
- 

Windows® 10 allows you to do any of the following recovery options:

- **Keep my files** - This option allows you refresh your ASUS All-in-One PC without affecting personal files (photos, music, videos, documents).

Using this option, you can restore your ASUS All-in-One PC to its default settings and delete other installed apps.

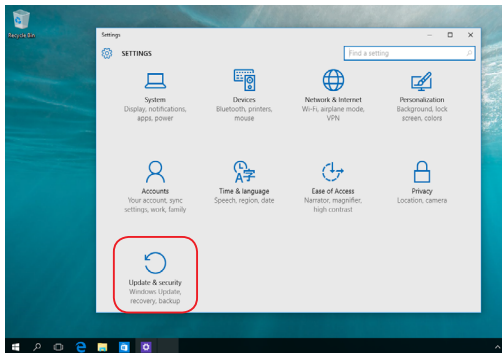
- **Remove everything** - This option resets your ASUS All-in-One PC to its factory settings. You must backup your data before doing this option.

- **Go back to an earlier build** - This option allows you to go back to an earlier build. Use this option if this build is not working for you.
- **Advanced startup** - Using this option allows you to perform other advanced recovery options on your ASUS All-in-One PC such as:
  - Using a USB drive, network connection or Windows recovery DVD to startup your ASUS All-in-One PC.
  - Using **Troubleshoot** to enable any of these advanced recovery options: System Restore, System Image Recovery, Startup Repair, Command Prompt, UEFI Firmware Settings, and Startup Settings.

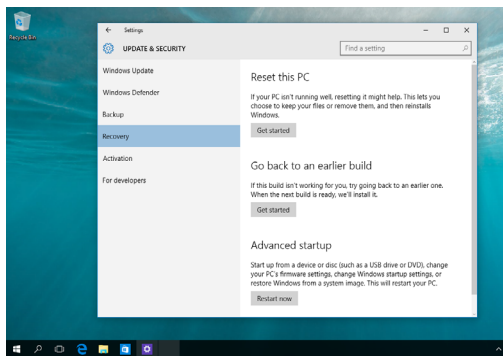
## Performing a recovery option

Refer to the following steps if you want to access and use any of the available recovery options for your ASUS All-in-One PC.

1. Launch **Settings** and select **Update and security**.



2. Under the **Update and security** option, select **Recovery** then select the recovery option you would like to perform.



# Appendices

## Notices

### Federal Communication Commission Interference Statement

This equipment has been tested and found to comply with the limits for a Class B digital device, pursuant to Part 15 of the FCC Rules. These limits are designed to provide reasonable protection against harmful interference in a residential installation. This equipment generates, uses and can radiate radio frequency energy and, if not installed and used in accordance with the instructions, may cause harmful interference to radio communications. However, there is no guarantee that interference will not occur in a particular installation. If this equipment does cause harmful interference to radio or television reception, which can be determined by turning the equipment off and on, the user is encouraged to try to correct the interference by one or more of the following measures:

- Reorient or relocate the receiving antenna.
- Increase the separation between the equipment and receiver.
- Connect the equipment into an outlet on a circuit different from that to which the receiver is connected.
- Consult the dealer or an experienced radio/TV technician for help.

FCC Caution: Any changes or modifications not expressly approved by the party responsible for compliance could void the user's authority to operate this equipment.

This device complies with Part 15 of the FCC Rules. Operation is subject to the following two conditions: (1) This device may not cause harmful interference, and (2) this device must accept any interference received, including interference that may cause undesired operation.

This device is restricted to indoor use when operated in the 5.15 to 5.25 GHz frequency range.

## RF exposure warning

This equipment must be installed and operated in accordance with provided instructions and the antenna(s) used for this transmitter must be installed to provide a separation distance of at least 20 cm from all persons and must not be co-located or operating in conjunction with any other antenna or transmitter. End-users and installers must be provided with antenna installation instructions and transmitter operating conditions for satisfying RF exposure compliance.

---

**IMPORTANT!** Outdoor operations in the 5.15~5.25 GHz band is prohibited. This device has no Ad-hoc capability for 5250~5350 and 5470~5725 MHz.

---

---

**CAUTION:** Any changes or modifications not expressly approved by the guarantee of this device could void the user's authority to operate the equipment.

---



## **Compliance Statement of Innovation, Science and Economic Development Canada (ISED)**

This device complies with Innovation, Science and Economic Development Canada licence exempt RSS standard(s). Operation is subject to the following two conditions: (1) this device may not cause interference, and (2) this device must accept any interference, including interference that may cause undesired operation of the device.

Operation in the band 5150–5250 MHz is only for indoor use to reduce the potential for harmful interference to co-channel mobile satellite systems.

CAN ICES-3(B)/NMB-3(B)

## **Déclaration de conformité de Innovation, Sciences et Développement économique Canada (ISED)**

Le présent appareil est conforme aux CNR d'Innovation, Sciences et Développement économique Canada applicables aux appareils radio exempts de licence. L'exploitation est autorisée aux deux conditions suivantes : (1) l'appareil ne doit pas produire de brouillage, et (2) l'utilisateur de l'appareil doit accepter tout brouillage radioélectrique subi, même si le brouillage est susceptible d'en compromettre le fonctionnement.

La bande 5150–5250 MHz est réservée uniquement pour une utilisation à l'intérieur afin de réduire les risques de brouillage préjudiciable aux systèmes de satellites mobiles utilisant les mêmes canaux.

CAN ICES-3(B)/NMB-3(B)

電波法により 5GHz 帯は屋内使用に限ります。

## Radio Frequency (RF) Exposure Information

The radiated output power of the wireless device is below the Industry Canada (IC) radio frequency exposure limits. The wireless device should be used in such a manner such that the potential for human contact during normal operation is minimized.

This device has also been evaluated and shown compliant with the IC RF Exposure limits under mobile exposure conditions (antennas are greater than 20cm from a person's body).

## Wireless Operation Channel for Different Domains

N. America 2.412-2.462 GHz      Ch01 through CH11

Japan      2.412-2.484 GHz      Ch01 through Ch14

Europe ETSI 2.412-2.472 GHz      Ch01 through Ch13

## CE Mark Warning

This is a Class B product, in a domestic environment, this product may cause radio interference, in which case the user may be required to take adequate measures.



The WiFi Operating in the band 5150-5350MHz shall be restricted to indoor use for countries listed in the table below:

AT	BE	BG	CZ	DK	EE	FR
DE	IS	IE	IT	EL	ES	CY
LV	LI	LT	LU	HU	MT	NL
NO	PL	PT	RO	SI	SK	TR
FI	SE	CH	UK	HR		

## NO DISASSEMBLY

**The warranty does not apply to the products that have been disassembled by users**

## Lithium-Ion Battery Warning

**CAUTION:** Danger of explosion if battery is incorrectly replaced. Replace only with the same or equivalent type recommended by the manufacturer. Dispose of used batteries according to the manufacturer's instructions.

## No Exposure to Liquids

**DO NOT** expose to or use near liquids, rain, or moisture. This product is not waterproof or oil-proof.



This symbol of the crossed out wheeled bin indicates that the product (electrical, electronic equipment, and mercury-containing button cell battery) should not be placed in municipal waste. Check local regulations for disposal of electronic products.



**DO NOT** throw the battery in municipal waste. The symbol of the crossed out wheeled bin indicates that the battery should not be placed in municipal waste.



請勿將電池當作一般垃圾丟棄。這個標誌表示電池不應視為一般垃圾丟棄。

## REACH

Complying with the REACH (Registration, Evaluation, Authorization, and Restriction of Chemicals) regulatory framework, we publish the chemical substances in our products at ASUS REACH website at <http://csr.asus.com/english/REACH.htm>.

## Global Environmental Regulation Compliance and Declaration

ASUS follows the green design concept to design and manufacture our products, and makes sure that each stage of the product life cycle of ASUS product is in line with global environmental regulations. In addition, ASUS disclose the relevant information based on regulation requirements.

Please refer to <http://csr.asus.com/english/Compliance.htm> for information disclosure based on regulation requirements ASUS is complied with:

### Japan JIS-C-0950 Material Declarations

### EU REACH SVHC

### Korea RoHS

## ASUS Recycling/Takeback Services

ASUS recycling and takeback programs come from our commitment to the highest standards for protecting our environment. We believe in providing solutions for you to be able to responsibly recycle our products, batteries, other components as well as the packaging materials. Please go to <http://csr.asus.com/english/Takeback.htm> for detailed recycling information in different regions.

## India RoHS

This product complies with the "India E-waste (Management and Handling) Rule 2011" and prohibits use of lead, mercury, hexavalent chromium, polybrominated biphenyls (PBBs) and polybrominated diphenyl ethers (PBDEs) in concentrations exceeding 0.1% by weight in homogenous materials and 0.01% by weight in homogenous materials for cadmium, except for the exemptions listed in Schedule-II of the Rule.

## Coating Notice

---

**IMPORTANT!** To provide electrical insulation and maintain electrical safety, a coating is applied to insulate the device except on the areas where the I/O ports are located.

---

## Prevention of Hearing Loss

To prevent possible hearing damage, do not listen at high volume levels for long periods.



A pleine puissance, l'écoute prolongée du baladeur peut endommager l'oreille de l'utilisateur.

## ENERGY STAR complied product



ENERGY STAR is a joint program of the U.S. Environmental Protection Agency and the U.S. Department of Energy helping us all save money and protect the environment through energy efficient products and practices.

All ASUS products with the ENERGY STAR logo comply with the ENERGY STAR standard, and the power management feature is enabled by default. The monitor and computer are automatically set to sleep after 10 and 30 minutes of user inactivity. To wake your computer, click the mouse or press any key on the keyboard.

Please visit <http://www.energystar.gov/powermanagement> for detail information on power management and its benefits to the environment. In addition, please visit <http://www.energystar.gov> for detail information on the ENERGY STAR joint program.

---

**NOTE:** Energy Star is NOT supported on FreeDOS and Linux-based operating systems.

---



Manufacturer	ASUSTek COMPUTER INC.
Address, City	4F No. 150, LI-TE RD., PEITOU, TAIPEI 112, TAIWAN
Telephone Number	+886-2-2894-3447
Authorized Representative in Europe	ASUS COMPUTER GmbH
Address, City	HARKORT STR. 21-23, 40880 RATINGEN
Country	GERMANY