

E23248

First Edition / April 2024

IN SEARCH OF INCREDIBLE



Service Manual

ASUS

COPYRIGHT INFORMATION

No part of this manual, including the products and software described in it, may be reproduced, transmitted, transcribed, stored in a retrieval system, or translated into any language in any form or by any means, except documentation kept by the purchaser for backup purposes, without the express written permission of ASUSTeK COMPUTER INC. ("ASUS").

ASUS PROVIDES THIS MANUAL "AS IS" WITHOUT WARRANTY OF ANY KIND, EITHER EXPRESS OR IMPLIED, INCLUDING BUT NOT LIMITED TO THE IMPLIED WARRANTIES OR CONDITIONS OF MERCHANTABILITY OR FITNESS FOR A PARTICULAR PURPOSE. IN NO EVENT SHALL ASUS, ITS DIRECTORS, OFFICERS, EMPLOYEES OR AGENTS BE LIABLE FOR ANY INDIRECT, SPECIAL, INCIDENTAL, OR CONSEQUENTIAL DAMAGES (INCLUDING DAMAGES FOR LOSS OF PROFITS, LOSS OF BUSINESS, LOSS OF USE OR DATA, INTERRUPTION OF BUSINESS AND THE LIKE), EVEN IF ASUS HAS BEEN ADVISED OF THE POSSIBILITY OF SUCH DAMAGES ARISING FROM ANY DEFECT OR ERROR IN THIS MANUAL OR PRODUCT.

Products and corporate names appearing in this manual may or may not be registered trademarks or copyrights of their respective companies, and are used only for identification or explanation and to the owners' benefit, without intent to infringe.

SPECIFICATIONS AND INFORMATION CONTAINED IN THIS MANUAL ARE FURNISHED FOR INFORMATIONAL USE ONLY, AND ARE SUBJECT TO CHANGE AT ANY TIME WITHOUT NOTICE, AND SHOULD NOT BE CONSTRUED AS A COMMITMENT BY ASUS. ASUS ASSUMES NO RESPONSIBILITY OR LIABILITY FOR ANY ERRORS OR INACCURACIES THAT MAY APPEAR IN THIS MANUAL, INCLUDING THE PRODUCTS AND SOFTWARE DESCRIBED IN IT.

Copyright © 2024 ASUSTeK COMPUTER INC. All Rights Reserved.

LIMITATION OF LIABILITY

Circumstances may arise where because of a default on ASUS' part or other liability, you are entitled to recover damages from ASUS. In each such instance, regardless of the basis on which you are entitled to claim damages from ASUS, ASUS is liable for no more than damages for bodily injury (including death) and damage to real property and tangible personal property; or any other actual and direct damages resulted from omission or failure of performing legal duties under this Warranty Statement, up to the listed contract price of each product.

ASUS will only be responsible for or indemnify you for loss, damages or claims based in contract, tort or infringement under this Warranty Statement.

This limit also applies to ASUS' suppliers and its reseller. It is the maximum for which ASUS, its suppliers, and your reseller are collectively responsible.

UNDER NO CIRCUMSTANCES IS ASUS LIABLE FOR ANY OF THE FOLLOWING: (1) THIRD-PARTY CLAIMS AGAINST YOU FOR DAMAGES; (2) LOSS OF, OR DAMAGE TO, YOUR RECORDS OR DATA; OR (3) SPECIAL, INCIDENTAL, OR INDIRECT DAMAGES OR FOR ANY ECONOMIC CONSEQUENTIAL DAMAGES (INCLUDING LOST PROFITS OR SAVINGS), EVEN IF ASUS, ITS SUPPLIERS OR YOUR RESELLER IS INFORMED OF THEIR POSSIBILITY.

SERVICE AND SUPPORT

Visit our multi-language website at <https://www.asus.com/support/>

Table of Contents

Chapter 1: Introduction

Disclaimer	8
Safety precautions.....	8
Pre-repair checklist	10
Installation tools.....	11
Accessories.....	11
Diagnostic tools	11
Major components.....	12

Chapter 2: Service Procedures

Bottom cover.....	16
Removal	17
Installation	19
Battery	21
Removal	22
Installation	25
M.2 SSD module.....	28
Removal	29
Installation	31
RAM module.....	33
Removal	34
Installation	35
Speakers.....	36
Removal	37
Installation	38

Stylus storage slot (on selected models).....	39
Removal	40
Installation	41
Touchpad.....	42
Removal	43
Installation	45
Heat sink	47
Removal	48
Installation	49
Fan module	50
Removal	51
Installation	53
WLAN module.....	55
Removal	56
Installation	57
LTE module (on selected models).....	58
Removal	59
Installation	60
Motherboard	61
Removal	62
Installation	65
I/O board.....	68
Removal	69
Installation	71
Display panel module.....	73
Removal	74
Installation	77

Display panel	79
Removal	80
Installation	87
Camera module.....	94
Removal	95
Installation	96
Top cover	97
Removal	98
Installation	101
Keyboard module.....	104
Removal	105
Installation	108

Appendix

Wiring and connection diagrams	112
--------------------------------------	-----

Chapter 1: ***Introduction***

Disclaimer

ASUS is not responsible for direct, indirect, intentional or unintentional damages resulting from improper installation and operation.

Safety precautions

- Before handling components, use a grounded wrist strap or touch a safely grounded object to avoid damaging them due to static electricity.
- Keep liquids or moisture away from your device to avoid short circuits.
- Remove rings, watches, and any other metal objects from your hands.
- Hold components by the edges to avoid touching the ICs.
- Properly install all components before connecting the AC power.
- Do not use power adapters or batteries from other devices to reduce the risk of injury to persons due to fire or explosion. Use only certified power adapters or batteries supplied by the manufacturer or authorized retailers.
- Detach all clips or flaps before removing cables to prevent damage.

- Disconnect cables, connectors, and power plugs by pulling the plug evenly to avoid damage.
- Use the correct screw models on your device to prevent damage.
- Confirm that the cable orientation is correct before connecting any cables.
- Fully remove all adhesive residue after removing and before installing any components.
- Photograph the appearance of cables, cable routing, connectors, and screws for later reference before proceeding with each step.

Pre-repair checklist

- Read the entire manual before starting any service procedures and follow all instructions.
 - Back up the data on your device.
 - Place your device on a clean and stable surface.
 - Turn off your device.
 - Disconnect all connected peripherals and cables.
 - Disconnect all power cables and remove the battery pack (if applicable).
-

IMPORTANT!

- If you are uncertain about performing the described service procedures, stop and contact an authorized service center for assistance.
 - Purchase replacement components from authorized retailers of this device to ensure maximum compatibility and reliability.
-

NOTE:

- The illustrations are for reference only.
 - The service procedures described in this manual depend on the model configuration and may not reflect the entire servicing process. To service components that are not covered in this manual, please visit an authorized service center for further assistance.
 - Keep all adhesive tape, insulating materials, screws, and other removable items in a safe place until the service procedure is completed, as they may be needed during installation.
-

Installation tools



Screwdriver



Plastic blade



Tweezers

Accessories



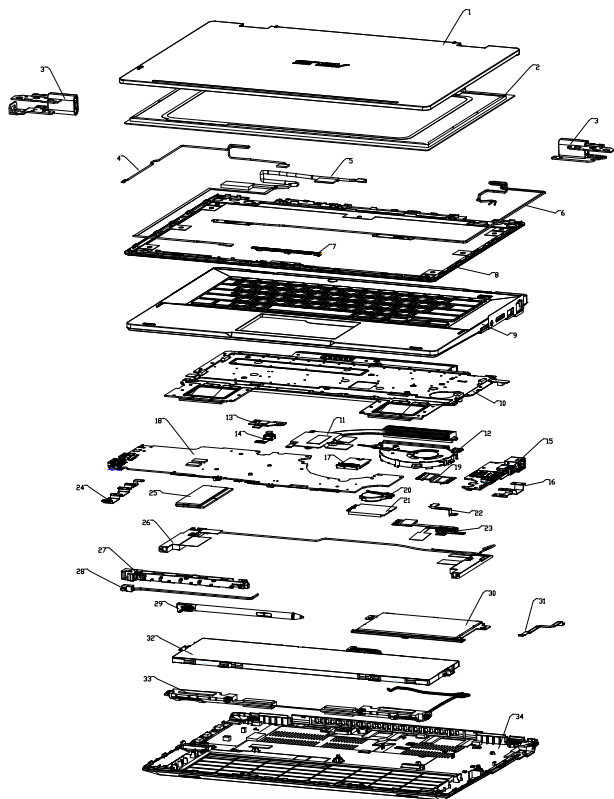
Power adapter

Diagnostic tools

Use ASUS System Diagnostics after completing any service procedures to ensure that all components are working properly.

For more information, visit www.asus.com/support/FAQ/1048490/.

Major components

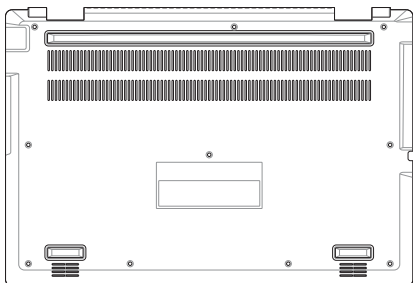


1. Top cover
2. Display panel
3. Hinges
4. LED board cable
5. eDP cable
6. Antenna cable
7. Camera module
8. Display bezel
9. Keyboard module
10. Keyboard bracket
11. Heat sink
12. Fan
13. World-facing camera bracket*
14. World-facing camera module*
15. I/O board
16. USB port bracket
17. WLAN module
18. Motherboard
19. I/O board cable
20. Coin battery
21. LTE module*
22. Fingerprint sensor cable
23. Fingerprint sensor
24. USB Type-C® port bracket
25. RAM module
26. Antenna cable
27. Stylus storage slot*
28. Stylus charger*
29. Stylus*
30. Touchpad
31. Touchpad cable
32. Battery
33. Speakers
34. Bottom cover

** On selected models*

Chapter 2: ***Service Procedures***

Bottom cover



Before you begin

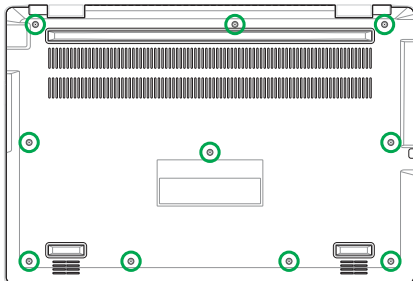
Read the **Safety Precautions** and complete the **Pre-repair Checklist**.

Screw list

- ⊕ M2.5 X 7.0L (10pcs)

Removal

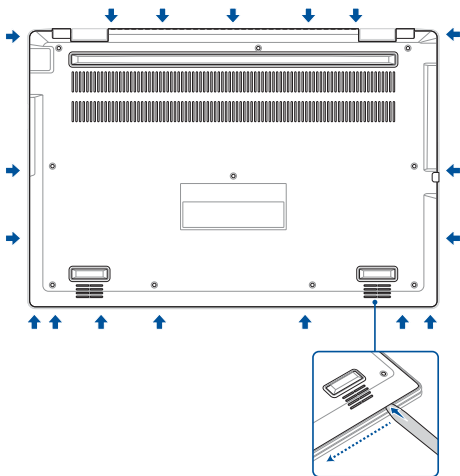
1. Remove the screw(s) from the bottom cover.



2. Use the plastic blade to pry open the indicated area of the bottom cover as shown in the illustration below.

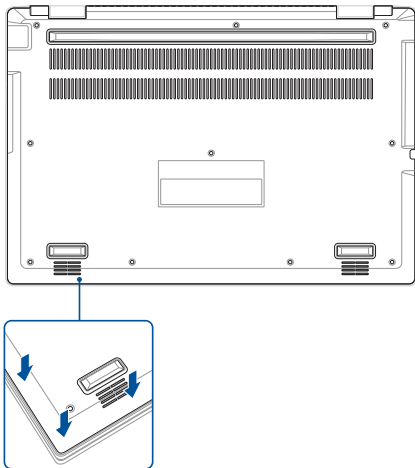
IMPORTANT! Avoid sliding the plastic blade along the side of your device or air vents to prevent damage.

3. Remove the bottom cover.

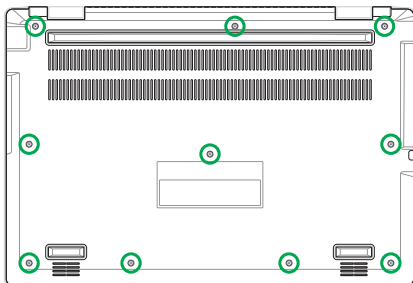


Installation

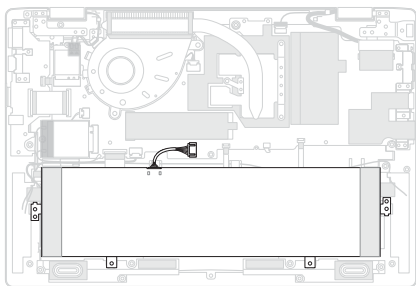
1. Install the bottom cover.
2. Gently press down on the bottom cover until it clicks into place.



3. Secure the bottom cover using the screw(s) you removed earlier.



Battery



Before you begin

1. Read the **Safety Precautions** and **Pre-repair Checklist**.
2. Remove the following components:
 - Bottom cover

Screw list

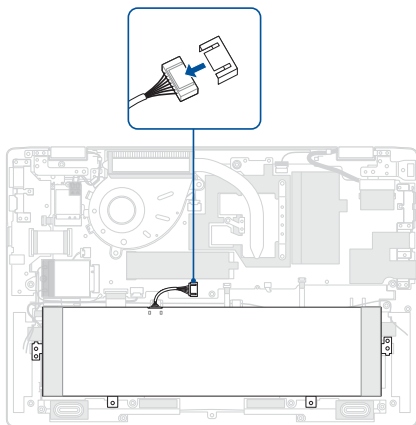
- ⊕ M2.0 X 3.5L (4pcs)

Removal

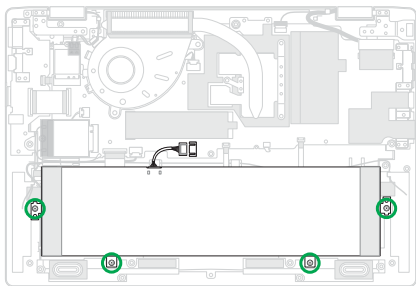
1. Disconnect the battery power cable.

IMPORTANT!

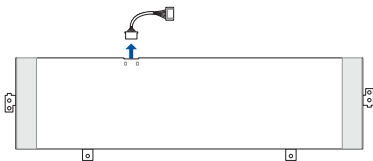
- Disconnect the battery power cable by lifting the side with the red wires first.
 - Serious risk of fire or explosion may occur if the battery is punctured. If you are uncertain about proceeding, stop and contact an authorized service center for assistance.
-



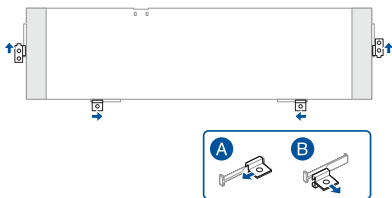
2. Remove the screw(s) from the battery, then remove the battery.



3. Remove the battery power cable.

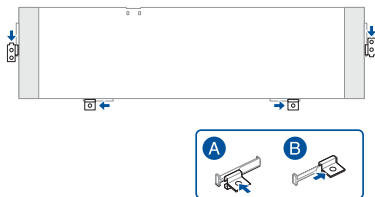


4. Remove the battery brackets from the battery.

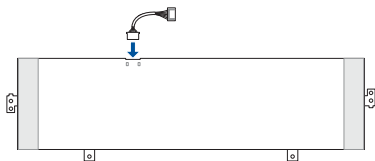


Installation

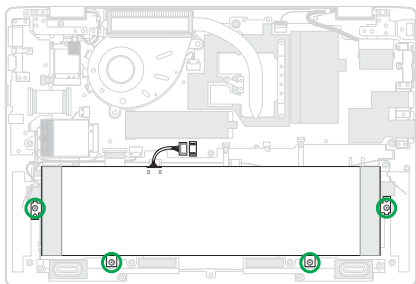
1. Attach the battery brackets to the battery.



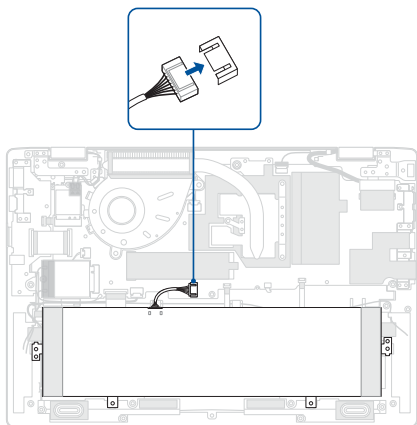
2. Connect the battery power cable to the battery.



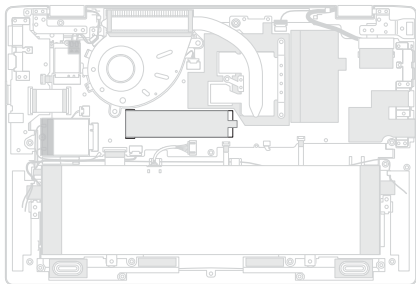
3. Install the battery, then secure the battery using the screw(s) you removed earlier.



4. Reconnect the battery power cable.
5. Install the components you removed in the *Before you begin* section.



M.2 SSD module



Before you begin

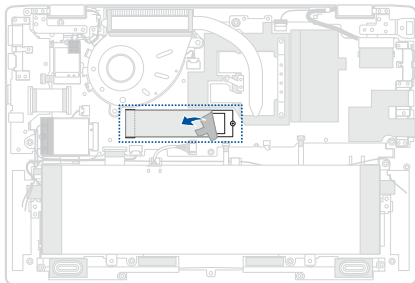
1. Read the **Safety Precautions** and **Pre-repair Checklist**.
2. Remove the following components:
 - Bottom cover
 - Battery

Screw list

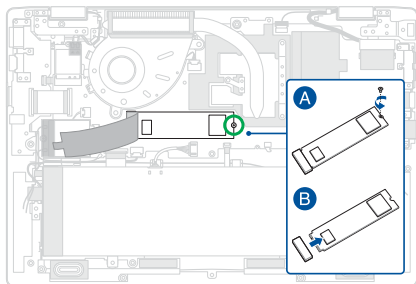
- ⊕ M2.0 X 2.5L (1pc)

Removal

1. Partially peel off the aluminum foil.

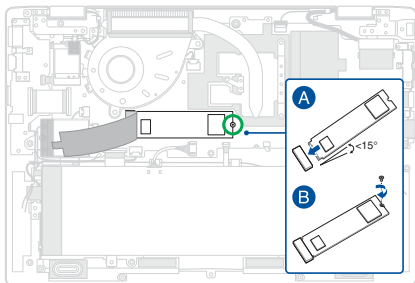


2. Remove the screw, then remove the M.2 SSD module.

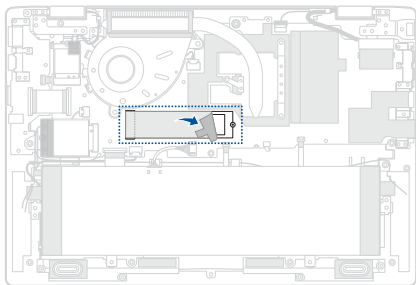


Installation

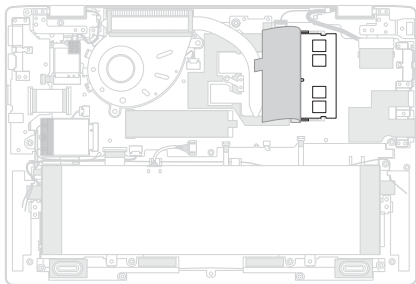
1. Align and insert the M.2 SSD module into the M.2 connector on the motherboard, then secure the M.2 SSD module using the screw you removed earlier.



2. Reattach the aluminum foil.
3. Install the components you removed in the *Before you begin* section.



RAM module

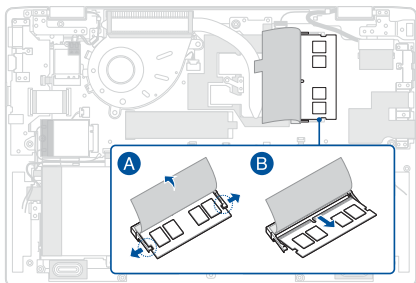


Before you begin

1. Read the **Safety Precautions** and **Pre-repair Checklist**.
2. Remove the following components:
 - Bottom cover
 - Battery

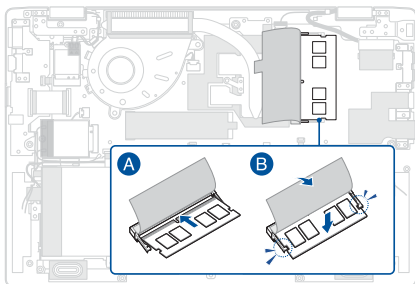
Removal

Partially peel off the polyester film, then push the clips outwards to remove the RAM module.

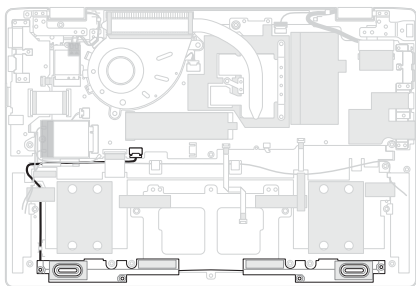


Installation

1. Align and insert the RAM module into the RAM module slot, then reattach the polyester film.
2. Install the components you removed in the *Before you begin* section.



Speakers

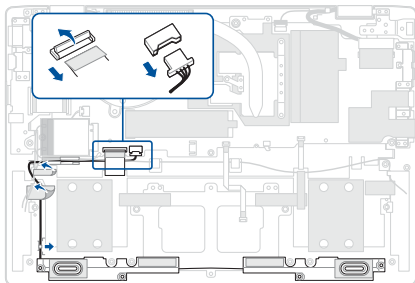


Before you begin

1. Read the **Safety Precautions** and **Pre-repair Checklist**.
2. Remove the following components:
 - Bottom cover
 - Battery

Removal

1. Disconnect the cable(s), then remove the tape.
2. Remove the cable from the cable guide(s).
3. Remove the speakers.

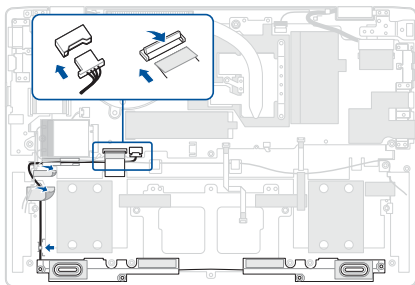


Installation

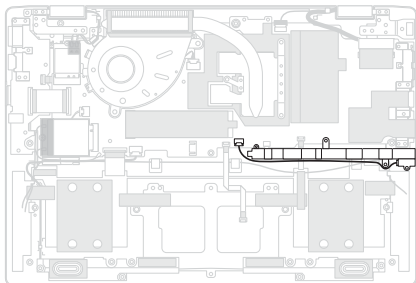
1. Install the speakers.
2. Route the cable through the cable guide(s).

IMPORTANT! Damage may occur if cables are not properly routed through the cable guides. Confirm that all cables are routed through each of the indicated cable guides before proceeding.

3. Reattach the tape, then reconnect the cable(s).
4. Install the components you removed in the *Before you begin* section.



Stylus storage slot (on selected models)



Before you begin

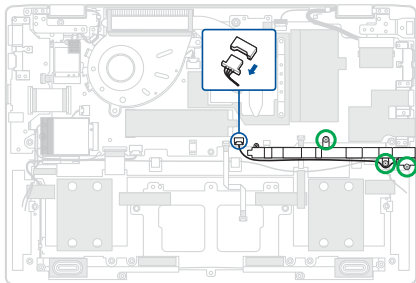
1. Read the **Safety Precautions** and **Pre-repair Checklist**.
2. Remove the following components:
 - Bottom cover
 - Battery

Screw list

- ⊕ M2.0 X 3.5L (3pcs)

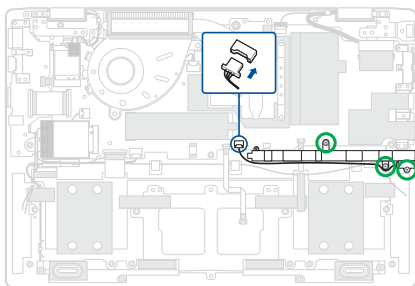
Removal

1. Disconnect the cable.
2. Remove the screw(s), then remove the stylus storage slot.

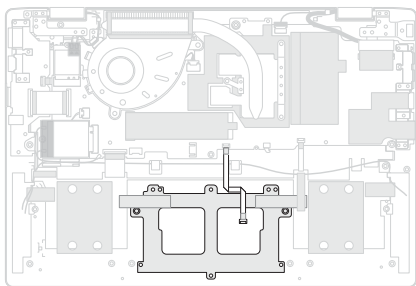


Installation

1. Install the stylus storage slot, then secure the stylus storage slot using the screw(s) you removed earlier.
2. Reconnect the cable.
3. Install the components you removed in the *Before you begin* section.



Touchpad



Before you begin

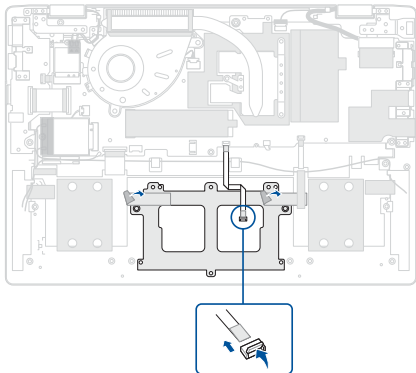
1. Read the **Safety Precautions** and **Pre-repair Checklist**.
2. Remove the following components:
 - Bottom cover
 - Battery
 - Speakers

Screw list

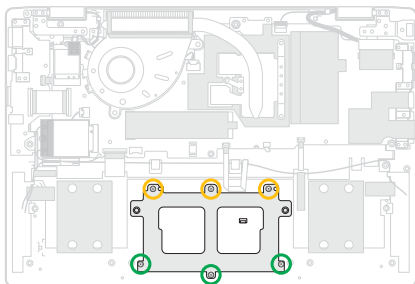
- ⊕ M2.0 X 2.5L X D5.0 (3pcs)
- ⊕ M2.0 X 2.0L X D7.0 (3pcs)

Removal

1. Disconnect the cable, then remove the tape.

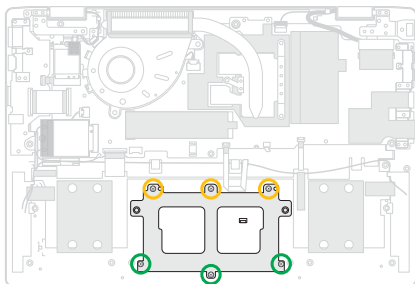


2. Remove the screw(s), then remove the touchpad.

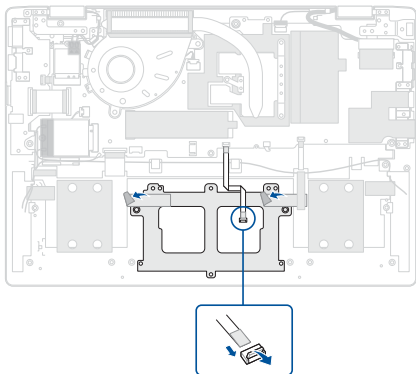


Installation

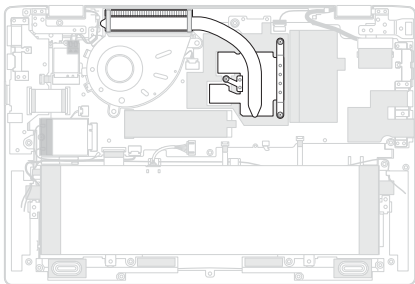
1. Install the touchpad, then secure the touchpad using the screw(s) you removed earlier.



2. Reattach the tape, then reconnect the cable.
3. Install the components you removed in the *Before you begin* section.



Heat sink



Before you begin

IMPORTANT! Thermal paste, thermal pads, liquid metal, or other thermal interface materials must be thoroughly removed and replaced if this component is removed. Ensure that replacement materials are available before proceeding, or contact an authorized service center for assistance.

1. Read the **Safety Precautions** and **Pre-repair Checklist**.
2. Remove the following components:
 - Bottom cover
 - Battery

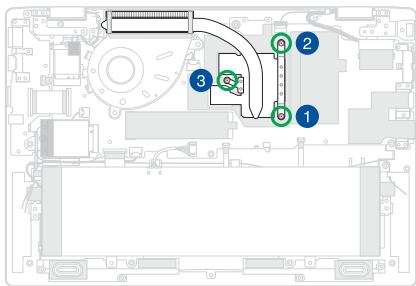
Screw list

- ⊕ M2.0 X 3.5L (3pcs)

Removal

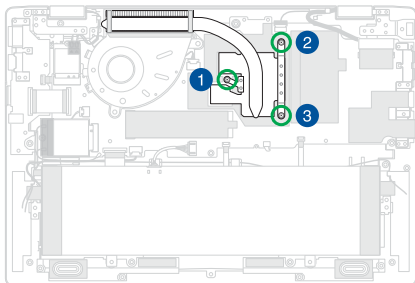
Remove the heat sink screw(s) one by one in the sequence shown in the illustration below, then remove the heat sink.

IMPORTANT! Vertically lift the heat sink to prevent damage.

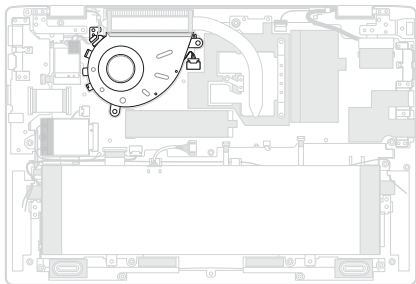


Installation

1. Install the heat sink, then secure the heat sink screw(s) one by one in the sequence shown in the illustration below.
2. Install the components you removed in the *Before you begin* section.



Fan module



Before you begin

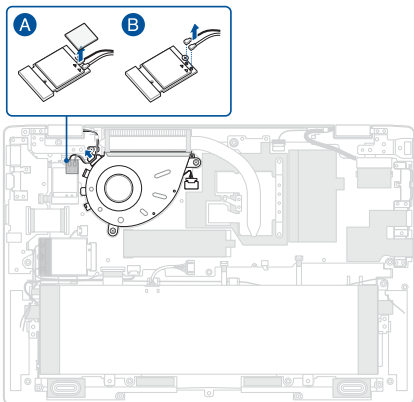
1. Read the **Safety Precautions** and **Pre-repair Checklist**.
2. Remove the following components:
 - Bottom cover
 - Battery

Screw list

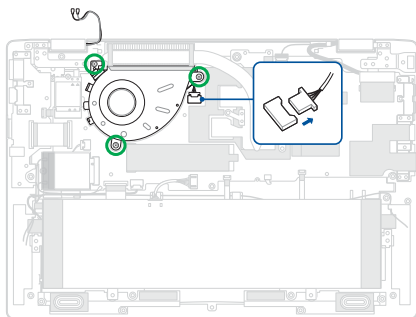
- ⊕ M2.0 X 3.5L (3pcs)

Removal

1. Remove the polyester film, then disconnect the cable(s).
2. Remove the cable(s) from the cable guide.

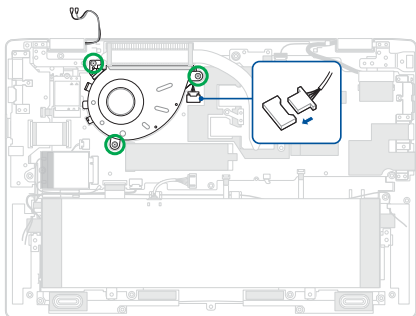


3. Disconnect the cable.
4. Remove the screw(s).
5. Remove the fan.



Installation

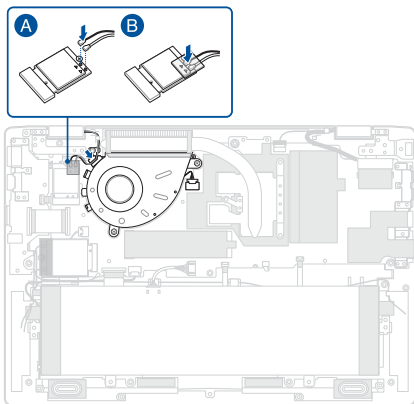
1. Install the fan.
2. Secure the fan using the screw(s) you removed earlier.
3. Reconnect the cable.



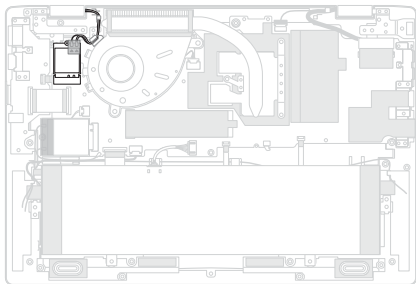
4. Route the cable(s) through the cable guide.

IMPORTANT! Damage may occur if cables are not properly routed through the cable guides. Confirm that all cables are routed through each of the indicated cable guides before proceeding.

5. Reconnect the cable(s), then reattach the polyester film.
6. Install the components you removed in the *Before you begin* section.



WLAN module



Before you begin

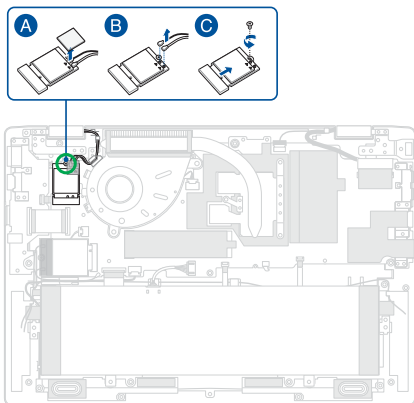
1. Read the **Safety Precautions** and **Pre-repair Checklist**.
2. Remove the following components:
 - Bottom cover
 - Battery

Screw list

- ⊕ M2.0 X 2.5L (1pc)

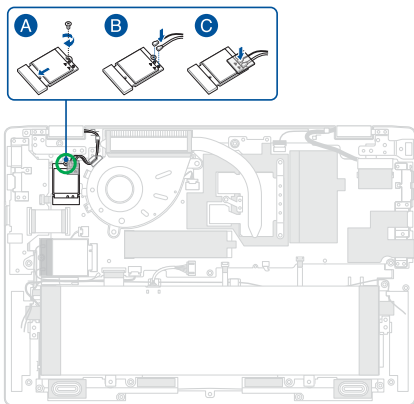
Removal

Remove the polyester film and disconnect the cable(s), then remove the screw and remove the WLAN module.

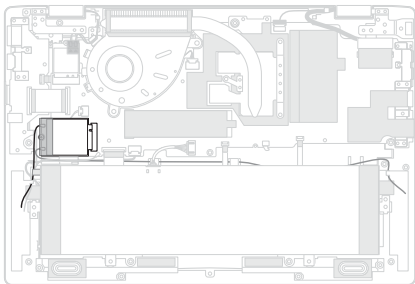


Installation

1. Install the WLAN module and secure the WLAN module using the screw you removed earlier, then reconnect the cable(s) and reattach the polyester film.
2. Install the components you removed in the *Before you begin* section.



LTE module (on selected models)



Before you begin

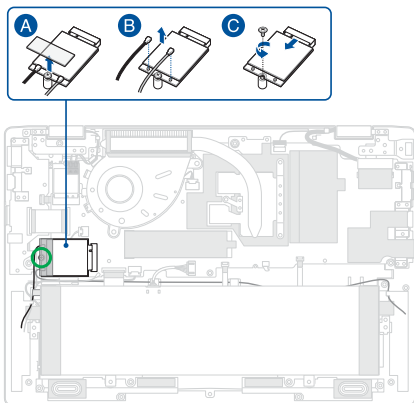
1. Read the **Safety Precautions** and **Pre-repair Checklist**.
2. Remove the following components:
 - Bottom cover
 - Battery

Screw list

- ⊕ M2.0 X 2.5L (1pc)

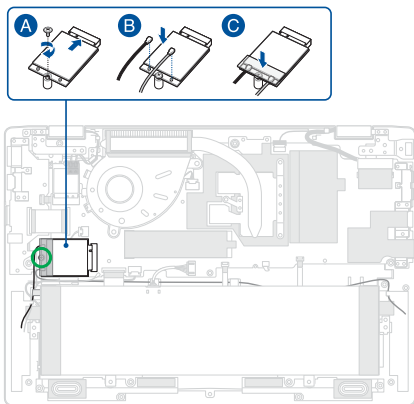
Removal

Remove the polyester film and disconnect the cable(s), then remove the screw and remove the LTE module.

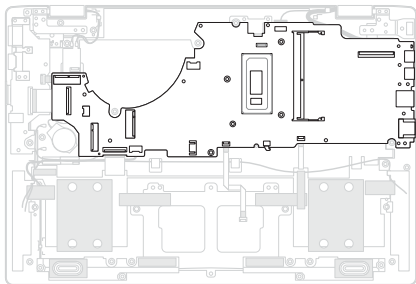


Installation

1. Install the LTE module and secure the LTE module using the screw you removed earlier, then reconnect the cable(s) and reattach the polyester film.
2. Install the components you removed in the *Before you begin* section.



Motherboard



Before you begin

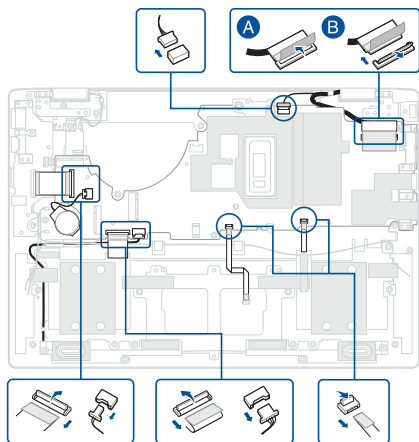
1. Read the **Safety Precautions** and **Pre-repair Checklist**.
2. Remove the following components:
 - Bottom cover
 - Battery
 - M.2 SSD module
 - RAM module
 - Stylus storage slot (on selected models)
 - Heat sink
 - Fan module
 - WLAN module
 - LTE module (on selected models)

Screw list

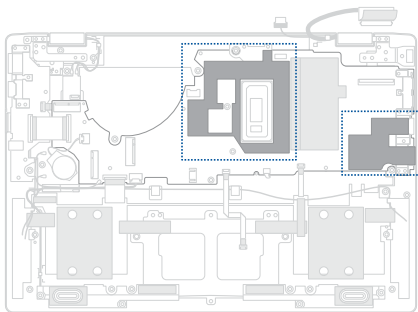
- ⊕ M2.0 X 3.5L (5pcs)
- ⊕ M2.0 X 2.5L (3pcs)

Removal

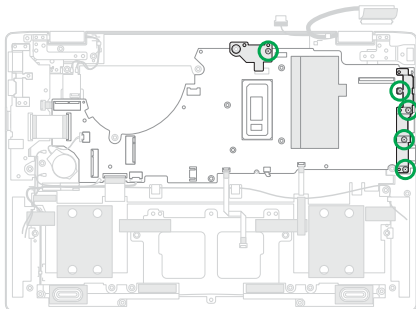
1. Disconnect the cable(s).



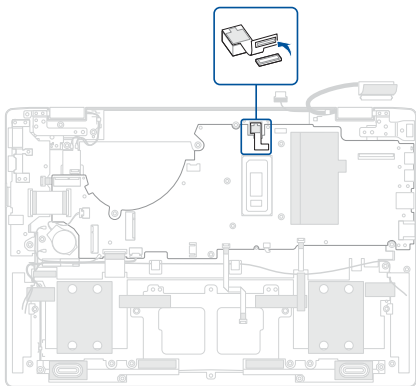
2. Remove the polyester film.



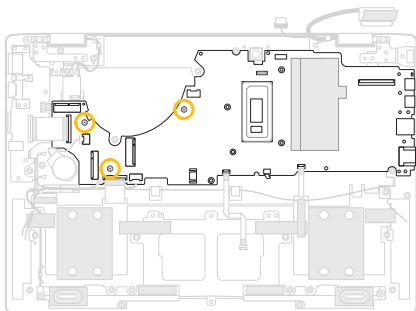
3. Remove the screw(s), then remove the bracket(s).



4. Disconnect and remove the camera (if available).

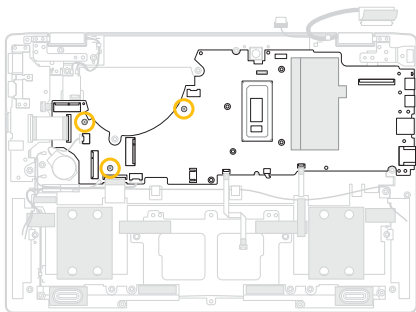


5. Remove the screw(s), then remove the motherboard from the chassis.

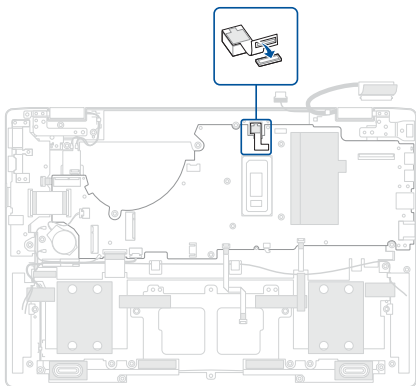


Installation

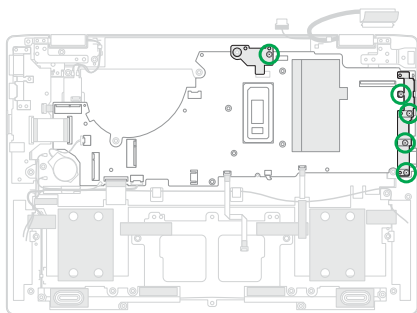
1. Align and install the motherboard, then secure the motherboard using the screw(s) you removed earlier.



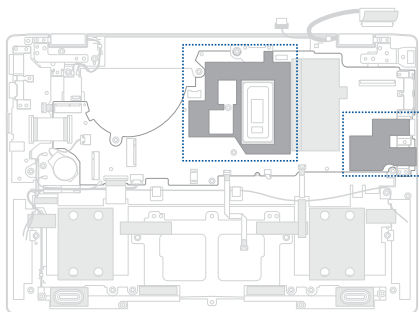
2. Install and reconnect the camera (if available).



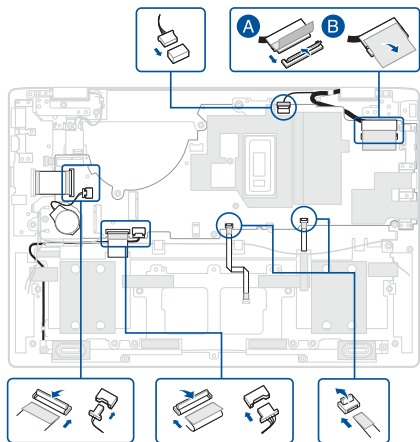
3. Install the brackets, then secure the brackets using the screw(s) you removed earlier.



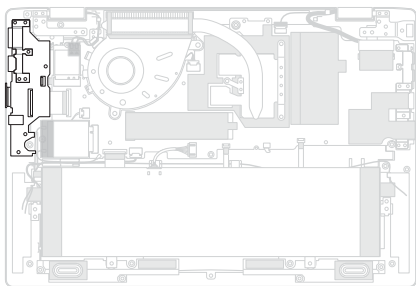
4. Reattach the polyester film.



5. Reconnect the cable(s).
6. Install the components you removed in the *Before you begin* section.



I/O board



Before you begin

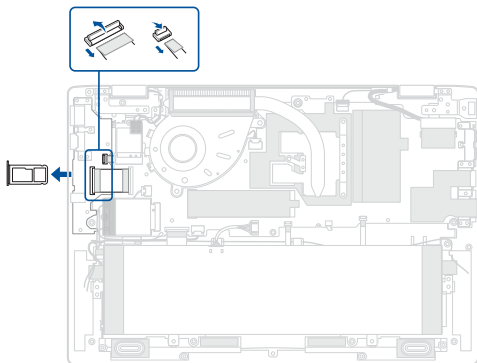
1. Read the **Safety Precautions** and **Pre-repair Checklist**.
2. Remove the following components:
 - Bottom cover
 - Battery

Screw list

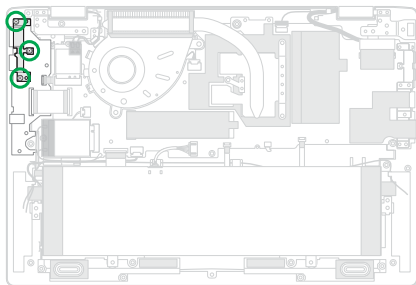
- ⊕ M2.0 X 3.5L (5pcs)

Removal

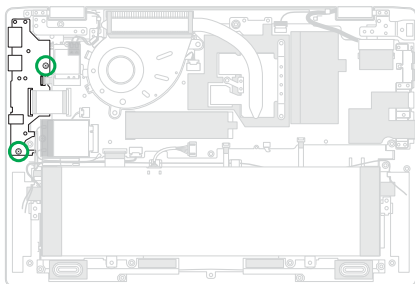
1. Disconnect the cable(s), then remove the memory card tray (if available).



2. Remove the screw(s), then remove the bracket.

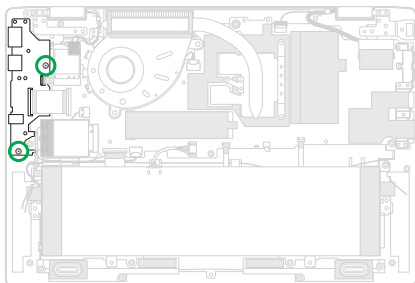


3. Remove the screw(s), then remove the I/O board.

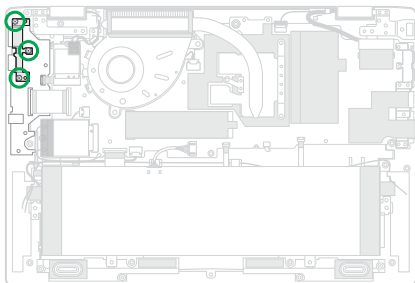


Installation

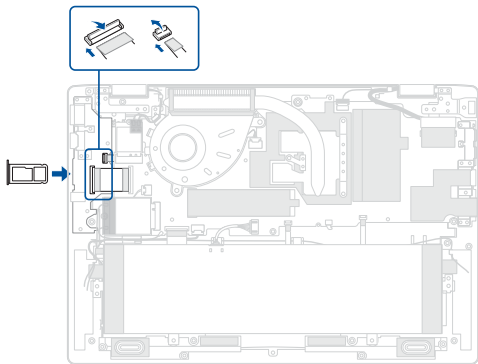
1. Install the I/O board, then secure the I/O board using the screw(s) you removed earlier.



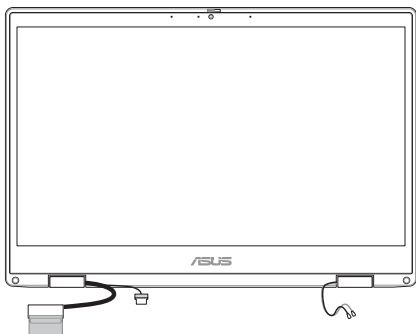
2. Install the bracket, then secure the bracket using the screw(s) you removed earlier.



3. Install the memory card tray (if available), then reconnect the cable(s).
4. Install the components you removed in the *Before you begin* section.



Display panel module



Before you begin

IMPORTANT! Do not bend the display panel in any way to avoid risk of display panel leakage.

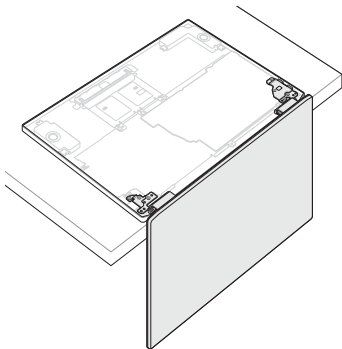
1. Read the **Safety Precautions** and **Pre-repair Checklist**.
2. Remove the following components:
 - Bottom cover
 - Battery

Screw list

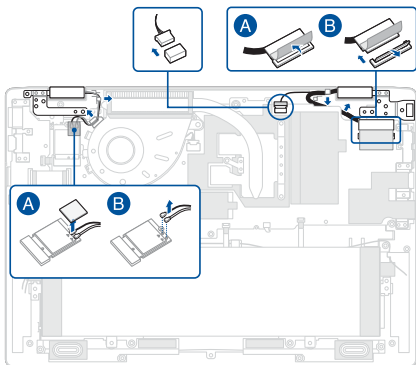
- ⊕ M2.5 X 4.0L (6pcs)

Removal

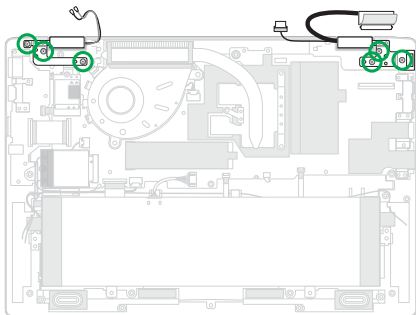
1. Place your device with the display panel hanging over the edge of the workspace as shown in the illustration below.



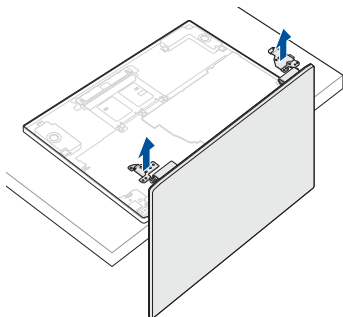
2. Remove the polyester film, then disconnect the cable(s).
3. Remove the cable(s) from the cable guide(s).



4. Remove the screw(s).

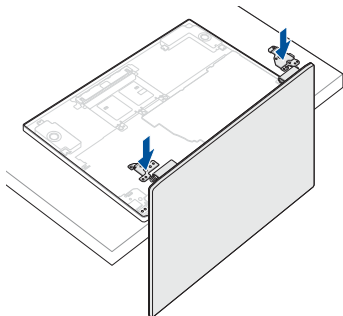


5. Remove the display panel module.

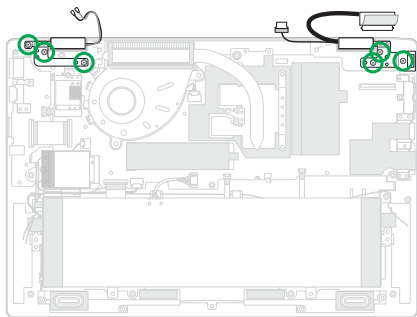


Installation

1. In the orientation shown, align and place the hinges of the display panel module on the screw holes.



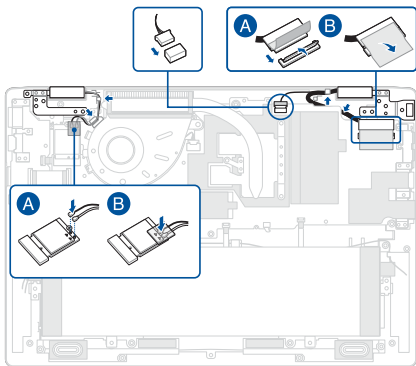
2. Secure the hinges using the screw(s) you removed earlier.



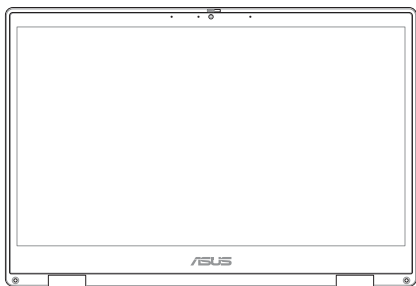
3. Route the cable(s) through the cable guide(s).

IMPORTANT! Damage may occur if cables are not properly routed through the cable guides. Confirm that all cables are routed through each of the indicated cable guides before proceeding.

4. Reconnect the cable(s), then reattach the polyester film.
5. Install the components you removed in the *Before you begin* section.



Display panel



Before you begin

IMPORTANT!

- This component is fragile. Damage may occur if the service procedure is performed incorrectly. If you are uncertain about proceeding, stop and contact an authorized service center for assistance.
 - Do not bend the display panel in any way to avoid risk of display panel leakage.
-

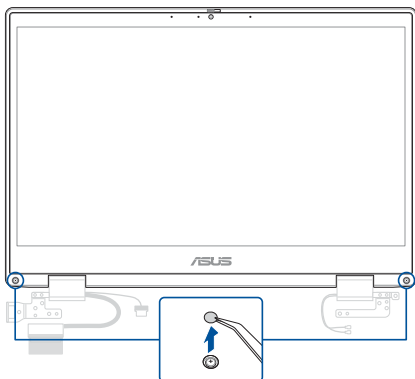
1. Read the **Safety Precautions** and **Pre-repair Checklist**.
2. Remove the following components:
 - Bottom cover
 - Battery
 - Display panel module

Screw list

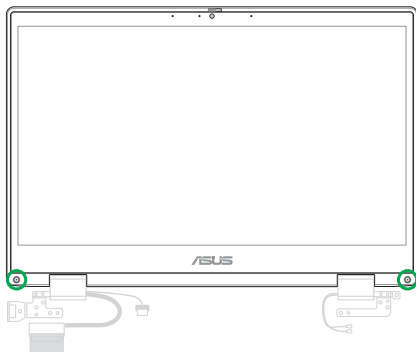
- ⊕ M2.0 X 3.5L (2pcs)

Removal

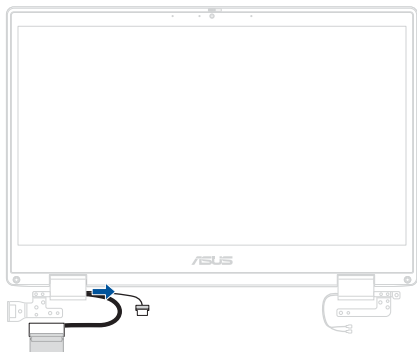
1. Remove the screw cover(s).



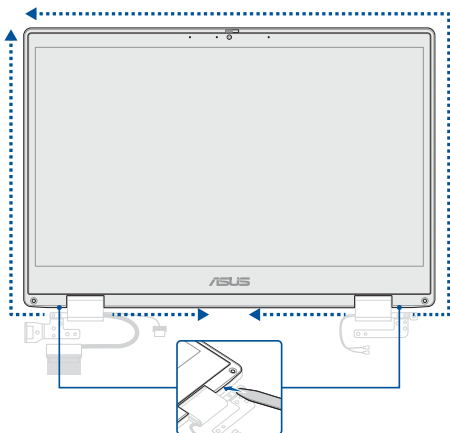
2. Remove the screw(s).



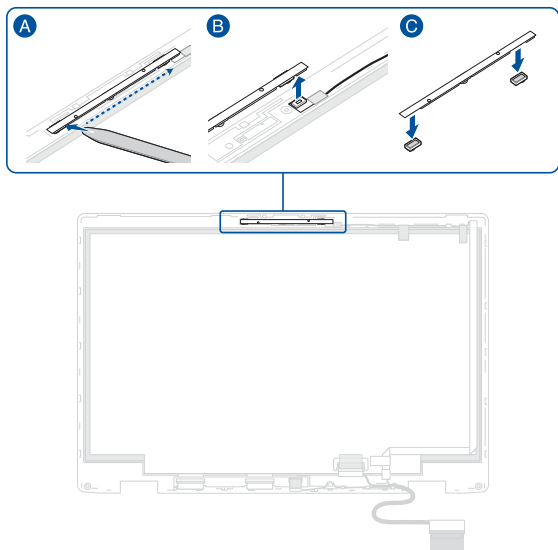
3. Remove the cable(s) from the cable guide.



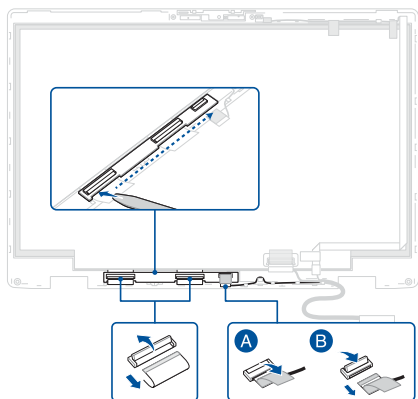
4. Carefully pry the display panel loose, then remove the display panel.



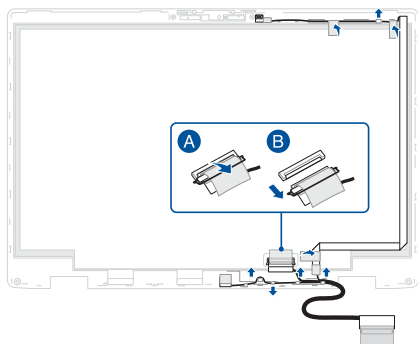
5. Carefully pry the camera module loose, then remove the camera module from the rear side of the display panel and remove the rubber caps from the camera module.



6. Disconnect the cable(s), then remove the touch screen board.



7. Remove the tape, then disconnect the cable.

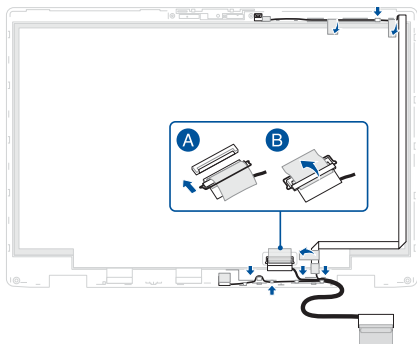


Installation

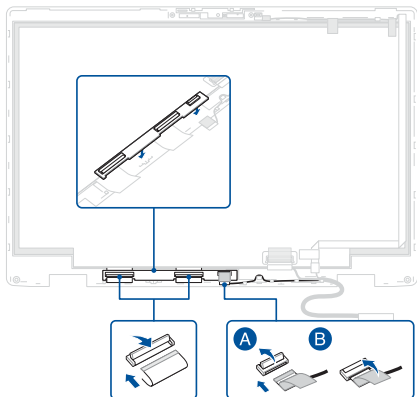
1. Route the cable(s) through the cable guide(s).

IMPORTANT! Damage may occur if cables are not properly routed through the cable guides. Confirm that all cables are routed through each of the indicated cable guides before proceeding.

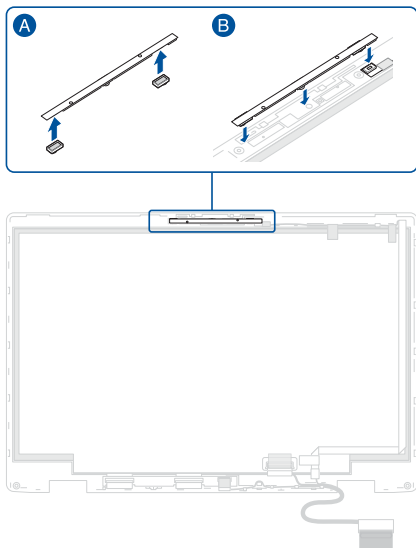
2. Reconnect the cable, then reattach the tape.



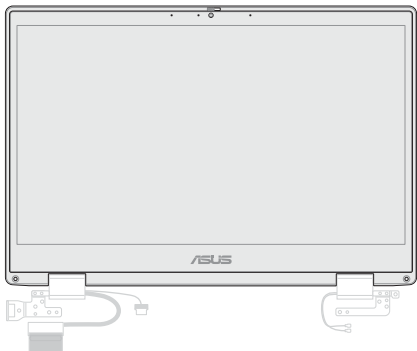
3. Install the touch screen board, then reconnect the cable(s).



4. Attach the rubber caps to the camera module, then install the camera module onto the rear side of the display panel.

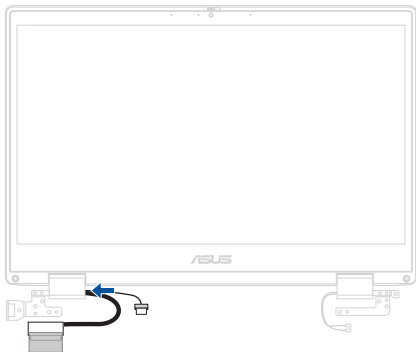


5. Flip the display panel over, then align the display panel with the top cover and gently press down on the display panel until it clicks into place.

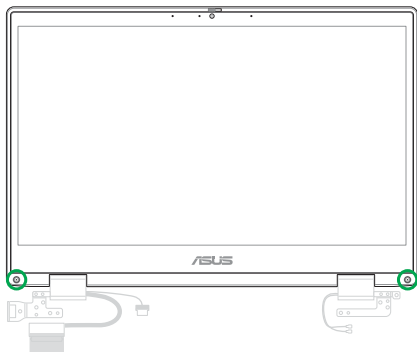


6. Route the cable(s) through the cable guide.

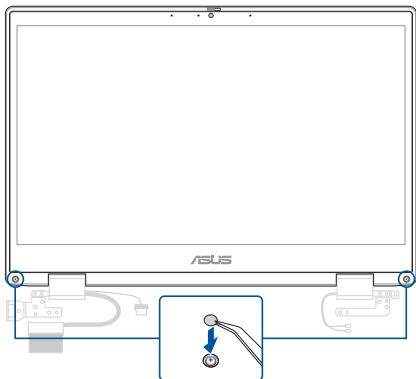
IMPORTANT! Damage may occur if cables are not properly routed through the cable guides. Confirm that all cables are routed through each of the indicated cable guides before proceeding.



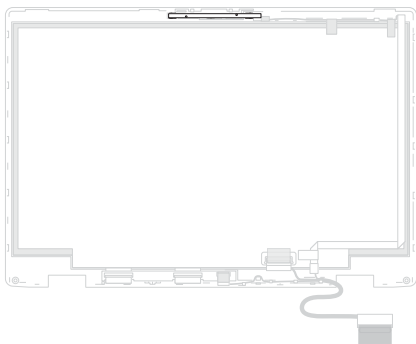
7. Secure the display panel using the screw(s) you removed earlier.



8. Reattach the screw cover(s).
9. Install the components you removed in the *Before you begin* section.



Camera module



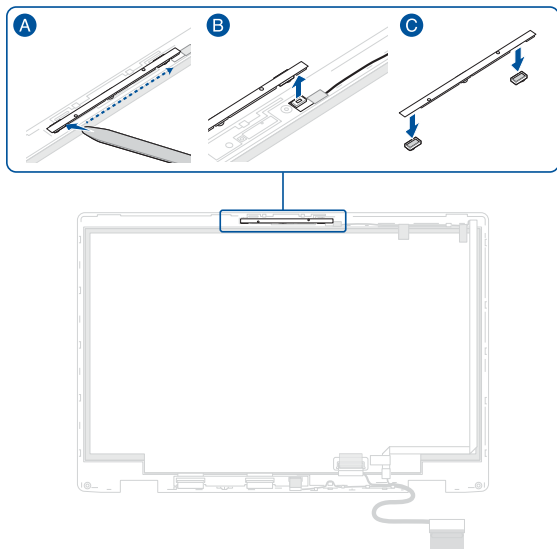
Before you begin

IMPORTANT! This component is fragile. Damage may occur if the service procedure is performed incorrectly. If you are uncertain about proceeding, stop and contact an authorized service center for assistance.

1. Read the **Safety Precautions** and **Pre-repair Checklist**.
2. Remove the following components:
 - Bottom cover
 - Battery
 - Display panel module
 - Display panel

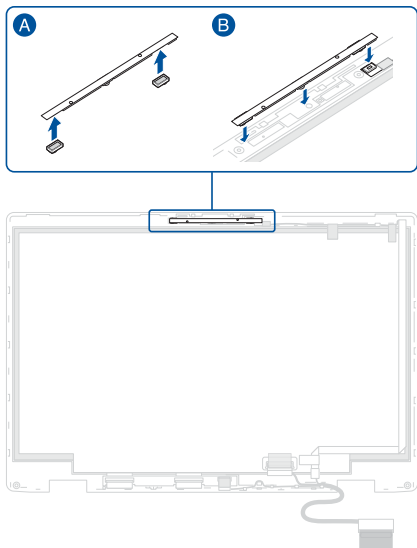
Removal

Carefully pry the camera module loose, then remove the camera module from the rear side of the display panel and remove the rubber caps from the camera module.

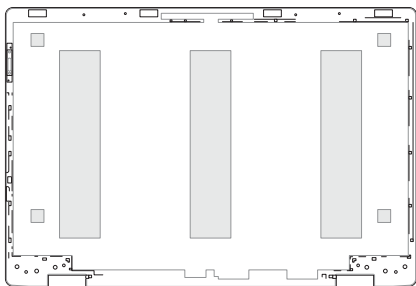


Installation

1. Attach the rubber caps to the camera module, then install the camera module onto the rear side of the display panel.
2. Install the components you removed in the *Before you begin* section.



Top cover



Before you begin

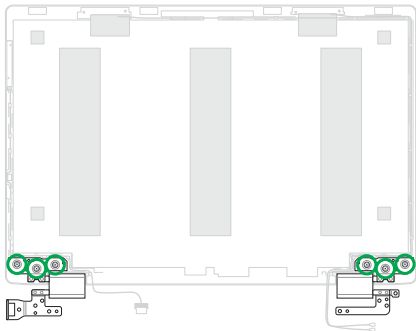
1. Read the **Safety Precautions** and **Pre-repair Checklist**.
2. Remove the following components:
 - Bottom cover
 - Battery
 - Display panel module
 - Display panel
 - Camera module

Screw list

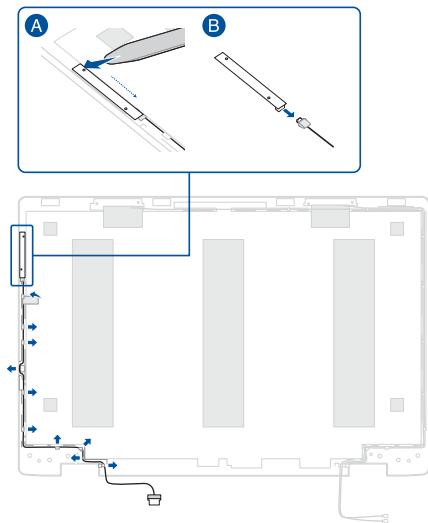
- ⊕ M2.5 X 2.5L (6pcs)

Removal

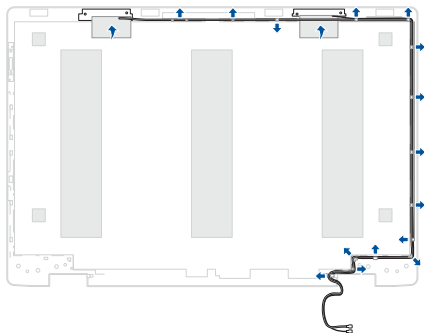
1. Remove the screw(s), then remove the hinges.



2. Remove the LED board, then disconnect the cable.
3. Remove the tape, then remove the cable from the cable guide(s).

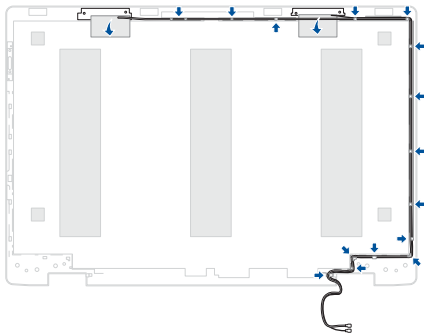


4. Remove the antenna cable.



Installation

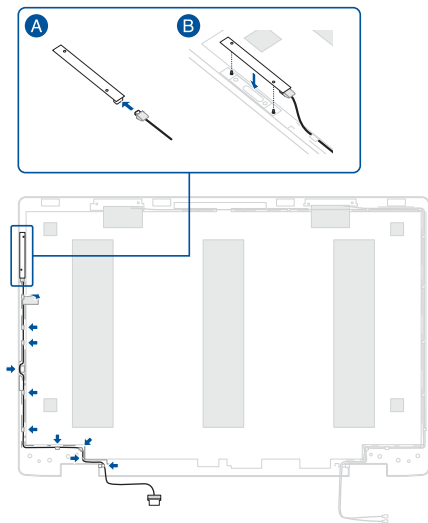
1. Install the antenna cable.



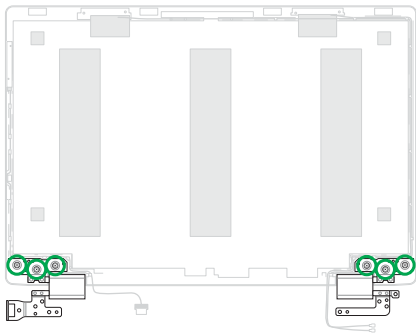
2. Route the cable through the cable guide(s), then reattach the tape.

IMPORTANT! Damage may occur if cables are not properly routed through the cable guides. Confirm that all cables are routed through each of the indicated cable guides before proceeding.

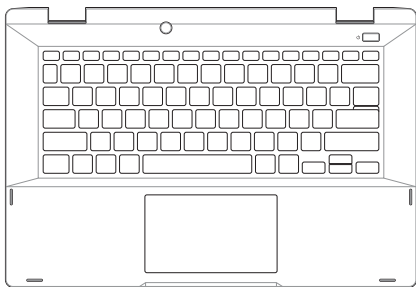
3. Reconnect the cable, then align and install the LED board.



4. Install the hinges, then secure the hinges using the screw(s) you removed earlier.
5. Install the components you removed in the *Before you begin* section.



Keyboard module



Before you begin

1. Read the **Safety Precautions** and **Pre-repair Checklist**.
2. Remove the following components:
 - Bottom cover
 - Battery
 - M.2 SSD module
 - RAM module
 - Stylus storage slot (on selected models)
 - Speakers
 - Touchpad
 - Heat sink
 - Fan module

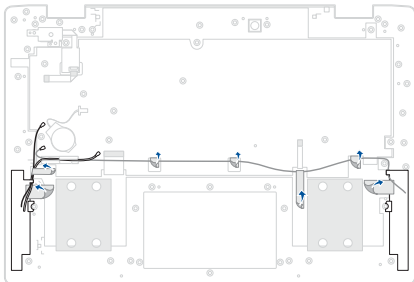
- WLAN module
- LTE module (on selected models)
- Motherboard
- I/O board
- Display panel module

Screw list

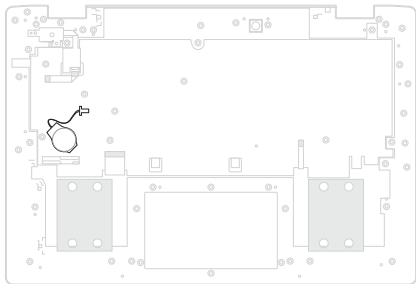
- ⊕ M1.6 X 1.8L (2pcs)

Removal

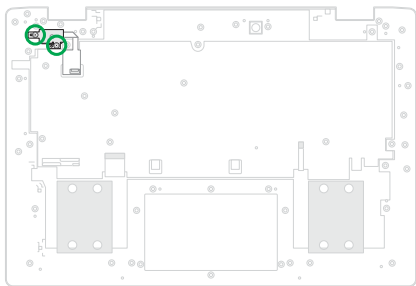
1. Partially peel off the polyester film and remove the tape, then remove the antenna cable(s).



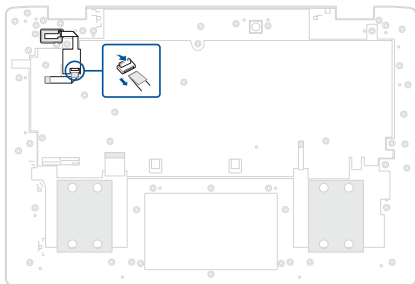
2. Remove the coin battery.



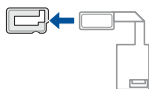
3. Remove the screw(s), then remove the bracket.



4. Disconnect the cable, then remove the fingerprint sensor.

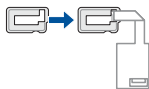


5. Remove the rubber piece from the fingerprint sensor.

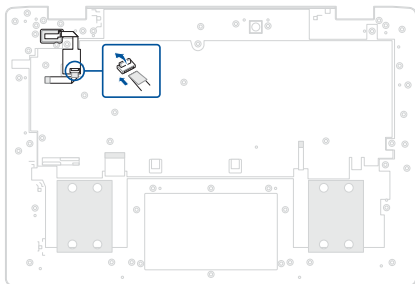


Installation

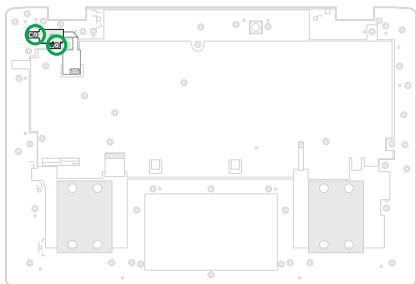
1. Attach the rubber piece to the fingerprint sensor.



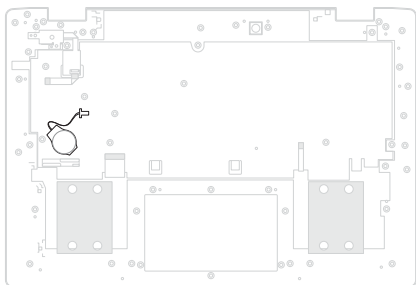
2. Install the fingerprint sensor, then reconnect the cable.



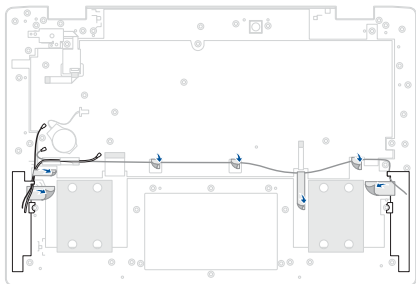
3. Install the bracket, then secure the bracket using the screw(s) you removed earlier.



4. Install the coin battery.

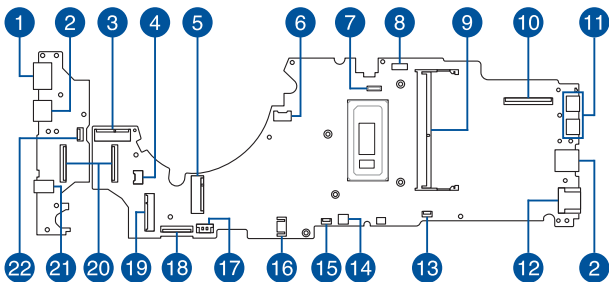


5. Install the antenna cable(s), then reattach the tape and reattach the polyester film.
6. Install the components you removed in the *Before you begin* section.



Appendix

Wiring and connection diagrams



- | | |
|----------------------------------|----------------------------------|
| 1. LAN connector | 12. HDMI connector |
| 2. USB Type-A connector | 13. Keyboard backlight connector |
| 3. WLAN module connector | 14. Stylus charger connector |
| 4. Coin battery connector | 15. Touchpad connector |
| 5. M.2 SSD connector | 16. Battery connector |
| 6. Fan connector | 17. Speaker connector |
| 7. World-facing camera connector | 18. Keyboard connector |
| 8. LED board connector | 19. LTE module connector |
| 9. RAM module slot | 20. I/O board connector |
| 10. eDP connector | 21. Audio connector |
| 11. USB Type-C® connector | 22. Fingerprint sensor connector |