

VivoMini memory, wireless card, and solid state drive (SSD) installation guide

Your VivoMini comes with the following items. Please contact ASUS Service Center if you cannot find the following items:

- 4 pcs holed rubber foot
- 2 pcs 2mm round screws, 1 hexagon screw
- 4 pcs 3mm round screws, 4 pcs 2mm round screws (on selected models)
- 2 pcs HDD bracket (on selected models)
- 1 pc HDD cable (on selected models)

IMPORTANT!

- It is recommended that you install or upgrade the memory modules, wireless card, and solid state drive (SSD), under professional supervision. Visit an ASUS service center for further assistance.
- Ensure that your hands are dry before proceeding with the rest of the installation process. Before installing any of the features in this guide, use a grounded wrist strap or touch a safely grounded object or metal object to avoid damaging them due to static electricity.

NOTE: The illustrations in this guide are for reference only. The slots may vary depending on model.



Installing or upgrading memory modules

Your VivoMini comes with two SO-DIMM memory slots that allow you to install two 2GB, 4GB, or 8GB unbuffered with non-ECC 1.35 V DDR3L 204-pin SO-DIMMs for a maximum of 16GB memory.

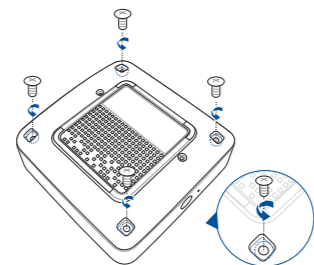
IMPORTANT! Refer to <http://www.asus.com> for the list of compatible DIMMs. You can only install 1.35 V DDR3L SO-DIMM to the VivoMini's DIMM slots.

NOTE:

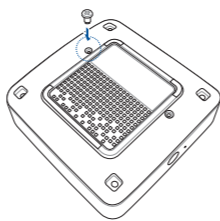
- The CPU model N3000 only has one DIMM slot.
- Some models may only support up to a maximum of 8GB memory

To install or upgrade the memory modules:

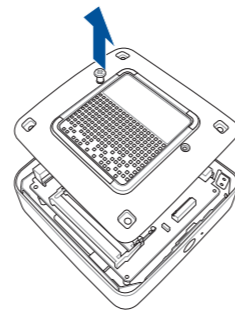
1. Turn off your VivoMini then disconnect all cables and peripherals.
2. Place the VivoMini on a flat stable surface, with its top side facing down.
3. Remove the four screws securing the cover.



4. Get one screw from the ones you previously removed then place it into the hole. Leave a portion of the screw head that would be enough for you to hold.



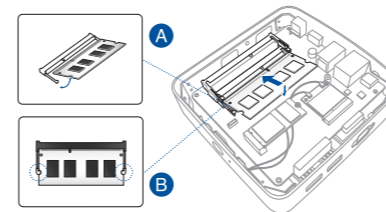
5. Hold the screw then gently pull out the cover from the bottom side of the VivoMini. Use your other free hand to hold the VivoMini in place.



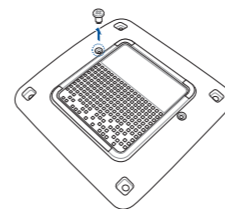
6. Align and insert the memory module into the slot (A) and press it down (B) until it is securely seated in place. Repeat the same steps to install the other memory module.

IMPORTANT! Always install into the upper slot first.

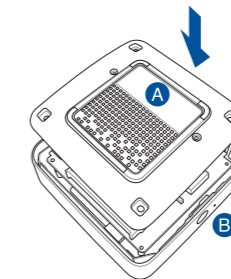
NOTE: The CPU model N3000 only has one DIMM slot.



7. Remove the screw you previously attached on the bottom cover.

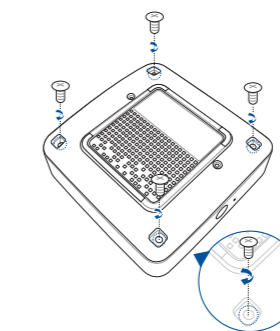


8. Place the cover back on the bottom side of your VivoMini. Note that the cover can only be inserted in one direction. Refer to the following illustration and note to ensure that the cover is securely fitted on the bottom side of the VivoMini.



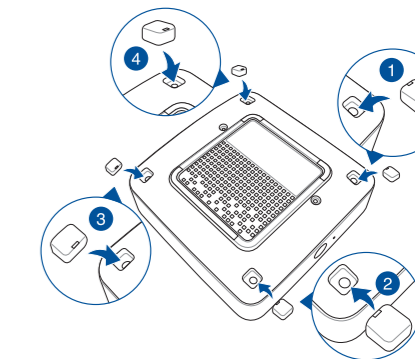
IMPORTANT! The rating label area (A) and the power button's location (B) must be oriented as shown.

9. Reattach the screws to secure the cover back on the bottom side of the main box.



10. Place the rubber foot on each screw hole. Refer to the illustration for more details.

IMPORTANT! A number is printed under each rubber foot and this number corresponds to that rubber foot's location on the cover. Follow the orientation of each rubber foot and the number sequence shown in the illustration below. The rubber foot fits in only one orientation. Note the position of the hole on each rubber foot, as shown in the illustration below



NOTE: If you want to remove the rubber foot, use a flathead screwdriver or a straightened paper clip to do so.

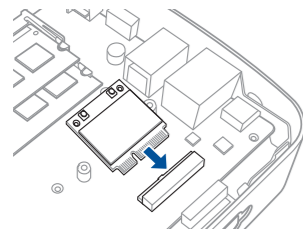
Installing or upgrading the wireless card

Your VivoMini includes a mini-PCIe slot for half-size wireless and Bluetooth adapters.

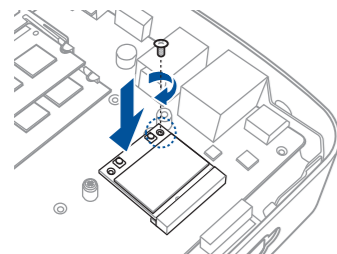
Refer to <http://www.asus.com> for the list of compatible wireless and Bluetooth adapters.

To install or upgrade the wireless card:

1. Follow steps 1-5 on pages 2-3 under the *Installing or upgrading memory modules* section of this guide to remove the bottom cover of your VivoMini.
2. Align and insert the wireless card into the lower slot inside the VivoMini.

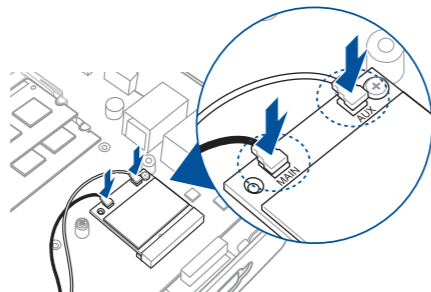


3. Gently push down the wireless card on top of the screw holes and fasten it using the 3mm round screw.



4. Connect the black antenna to **MAIN** or ▲ and the white antenna to **AUX** or △. Refer to the illustration for the right installation procedure.

NOTE: A soft clicking sound indicates that the antenna has been securely attached on the wireless card.



5. Follow steps 7-10 on pages 4-6 under the *Installing or upgrading memory modules* section of this guide to replace the bottom cover back on your VivoMini.

Installing or upgrading the M.2 SSD

Your VivoMini includes a PCIe slot that supports a full-size or a half-size M.2 SSD.

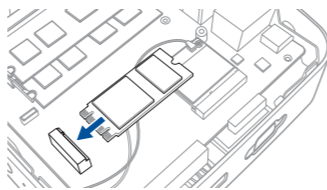
To install or upgrade a half-size M.2 SSD:

1. Follow steps 1-5 on pages 2-3 under the *Installing or upgrading memory modules* section of this guide to remove the bottom cover of your VivoMini.

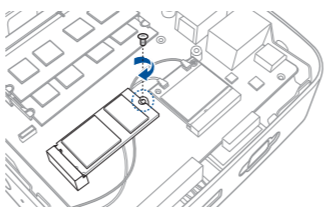
2. Insert the hexagon screw, as illustrated.



3. Align and insert the half-size M.2 SSD into its slot inside the VivoMini. Refer to the illustration for its location.



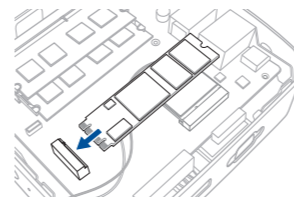
4. Gently push down the half-size M.2 SSD on top of the screw hole and fasten it using one of the 3mm round screw. Refer to the illustration for the location of the screw hole.



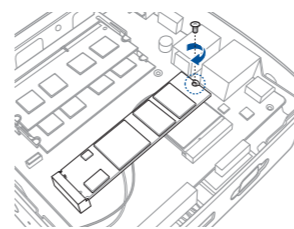
5. Follow steps 7-10 on pages 4-6 under the *Installing or upgrading memory modules* section of this guide to replace the bottom cover back on your VivoMini.

To install or upgrade a full-size M.2 SSD:

1. Follow steps 1-5 on pages 2-3 under the *Installing or upgrading memory modules* section of this guide to remove the bottom cover of your VivoMini.
2. Align and insert the full-size M.2 SSD into its slot inside the VivoMini. Refer to the illustration for its location.



3. Gently push down the full-size M.2 SSD on top of the screw hole and fasten it using one of the 3mm round screw. Refer to the illustration for the location of the screw hole.

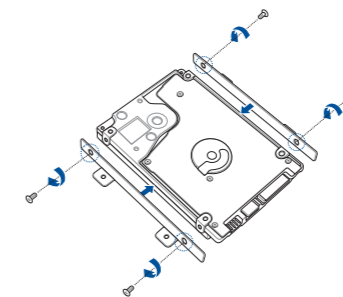


4. Follow steps 7-10 on pages 4-6 under the *Installing or upgrading memory modules* section of this guide to replace the bottom cover back on your VivoMini.

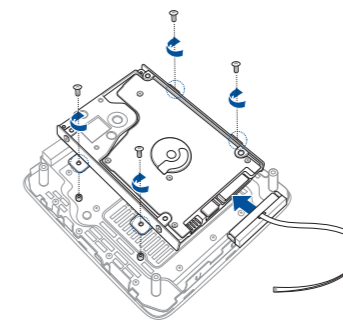
Installing 2.5" HDD (on selected models)

To install the 2.5" HDD:

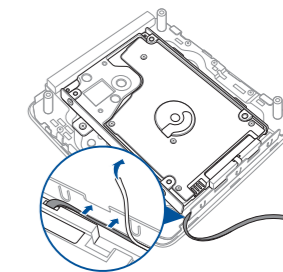
1. Follow steps 1-5 on pages 2-3 under the *Installing or upgrading memory modules* section of this guide to remove the bottom cover of your VivoMini.
2. Align the bundled bracket on each side of the HDD and insert four (4) screws to secure the 2.5" HDD to the bracket.



3. Connect the bundled HDD cable to the HDD, then secure the HDD and bracket to the bottom cover of your VivoMini using the four (4) bundled screws.



4. Remove the tape covering on the HDD cable and stick the cable to the bottom cover of your VivoMini as shown in the illustration below.



5. Connect the HDD cable to your VivoMini, then follow steps 7-10 on pages 4-6 under the *Installing or upgrading memory modules* section of this guide to replace the bottom cover back on your VivoMini.

