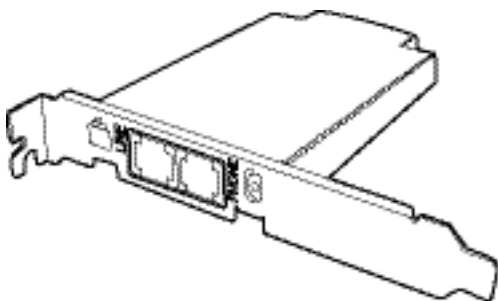


E2927



# TeleSky

## Telecom Adapter Card



User Guide

V1.0



# Preface

## Welcome

Congratulations on your purchase. Ensure that you read this manual carefully and keep it in a safe place for future reference.

## Safety Information

- Read these instructions.
- Keep these instructions.
- Heed all instructions.
- Do not expose the product to dripping or splashing and no objects filled with liquid shall be placed on the product.
- Do not use this product near water, for example, near a bath tub, wash bowl, kitchen sink or laundry tub, in a wet basement, or near a swimming pool.
- Avoid using a telephone (other than a cordless type) during an electrical storm. There may be a remote risk of electric shock from lightning.
- Do not use the telephone to report a gas leak when in the vicinity of the leak itself.
- Do not install near any heat sources such as radiators, hear registers, stoves, or other apparatus (including amplifiers) that produce heat.

- Only use attachments/ accessories specified by the manufacturer.
- Use only with the cables specified by the manufacturer, or sold with the apparatus.
- Refer all servicing to qualified service personnel. Servicing is required when the apparatus has been damaged in any way, such as liquid has been spilled or objects have fallen into the apparatus, the apparatus has been exposed to rain or moisture, does not operate normally, or has been dropped.

## About this Manual

Copyright© 2006 ASUSTeK COMPUTER INC. All rights reserved.

No part of this manual, including the products and software described in it, may be reproduced, transmitted, transcribed, stored in a retrieval system, or translated into any language in any form or by any means, except documentation kept by the purchaser for backup purposes, without the express written permission of ASUSTeK COMPUTER INC. ("ASUS").

ASUS PROVIDES THIS MANUAL "AS IS" WITHOUT WARRANTY OF ANY KIND, EITHER EXPRESS OR IMPLIED, INCLUDING BUT NOT LIMITED TO THE IMPLIED WARRANTIES OR CONDITIONS OF MERCHANTABILITY OR FITNESS FOR A PARTICULAR PURPOSE. IN NO EVENT SHALL ASUS, ITS DIRECTORS, OFFICERS, EMPLOYEES OR AGENTS BE LIABLE FOR ANY INDIRECT, SPECIAL, INCIDENTAL, OR CONSEQUENTIAL DAMAGES (INCLUDING DAMAGES FOR LOSS OF PROFITS, LOSS OF BUSINESS, LOSS OF USE OR DATA, INTERRUPTION OF BUSINESS AND THE LIKE), EVEN IF ASUS HAS BEEN ADVISED OF THE POSSIBILITY OF SUCH DAMAGES ARISING FROM ANY DEFECT OR ERROR IN THIS MANUAL OR PRODUCT.

Product warranty or service will not be extended if:

(1) the product is repaired, modified or altered, unless such repair, modification or alteration is authorized in writing by ASUS; or (2) the serial




number of the product is defaced or missing. The product name and revision number are both printed on the product itself. Manual revisions are released for each product design represented by the digit before and after the period of the manual revision number. Manual updates are represented by the third digit in the manual revision number.

SPECIFICATIONS AND INFORMATION CONTAINED IN THIS MANUAL ARE FURNISHED FOR INFORMATIONAL USE ONLY, AND ARE SUBJECT TO CHANGE AT ANY TIME WITHOUT NOTICE, AND SHOULD NOT BE CONSTRUED AS A COMMITMENT BY ASUS. ASUS ASSUMES NO RESPONSIBILITY OR LIABILITY FOR ANY ERRORS OR INACCURACIES THAT MAY APPEAR IN THIS MANUAL, INCLUDING THE PRODUCTS AND SOFTWARE DESCRIBED IN IT.

Products and corporate names appearing in this manual may or may not be registered trademarks or copyrights of their respective companies, and are used only for identification or explanation and to the owners' benefit, without intent to infringe.

# Warning Instructions

- Do not expose the product to dripping or splashing and no objects filled with liquid, such as vases, shall be placed on the product.
- To reduce the risk of fire or electric shock, do not expose this product to rain or moisture.
- To reduce the risk of fire, use only a No. 26 AWG or larger telecommunication line cord.

		
<p>The lightning flash with arrowhead symbol, within an equilateral triangle, is intended to alert the user to the presence of uninsulated dangerous voltage within the product's enclosure that may be of sufficient magnitude to constitute a risk of electric shock.</p>	<p>To reduce the risk of electric shock, do not remove the cover (or back). No user serviceable parts are inside. Refer servicing to qualified service personnel.</p>	<p>The exclamation point within an equilateral triangle is intended to alert the user to the presence of important operating and maintenance (servicing) instructions in the literature accompanying the appliance.</p>

# Compliance Notice

The use of this equipment may be subject to local rules and regulations. The following rules and regulations may be relevant in some or all areas.

## FCC REQUIREMENTS

This equipment complies with 47 CFR Part 68 Rules. On the bottom of this equipment is label that contains, among other information, the ACTA registration Number and Ringer equipment Number (REN) for the equipment. If requested, this information must be given to the Telephone Company.

The REN is useful to determine the quantity of devices you may connect to your telephone line and still have those entire devices ring when your telephone number is called. In most, but not all areas, the sum of the REN's of all devices connected to one line should not exceed five (5.0). To be certain of the number of devices you're local telephone company to determine the maximum REN for you're calling area. If your telephone equipment cause harm to the telephone network, the Telephone Company may discontinue your service temporarily. If possible, they will notify you in advance. But is advance notice isn't practical; you will be informed of your right to file a complaint with the ACTA.

Your telephone company may changes in its facilities, equipment, operations or procedures that could affect the proper functioning of your equipment. If they do, you will be notified in advance to given you and opportunity to maintain uninterrupted telephone service. If you experience trouble with this telephone equipment, please contact the following address and phone number for information on obtaining service or repairs. The telephone company may ask that your disconnect this equipment from the network until the problem has been corrected or until you are sure that the equipment is not malfunctioning.

This equipment may not be used on coin service provide by the telephone company. Connection to party lines is subject to state tariffs.

## IC for Canada

This Class B digital apparatus meets all requirements of the Canadian Interference-Causing Equipment regulations.

Cet appareil numérique de la class B respecte toutes les exigences du Règlement sur le matériel brouiller du Canada.



# Warning Symbols Used in this Manual



**NOTE:** Tips and information to aid in completing a task.



**IMPORTANT:** Instructions that you **MUST** follow to complete a task.



**CAUTION:** Information to prevent injury to yourself when trying to complete a task.



**WARNING:** Information to prevent injury to yourself when trying to complete a task.



**NETWORK DEPENDENT/SUBSCRIBED  
FEATURE:** The phone feature is network dependent or subscribed.

# Contents

Preface.....	1	Start Talking!.....	22
Welcome.....	1	Opening a New Skype Account.....	22
Safety Information .....	1	Topping Up Your Account .....	23
About this Manual.....	2	Setting Speed-Dial number.....	24
Warning Instructions.....	4	Making Your First Call.....	25
Compliance Notice .....	5	Managing Contacts .....	28
Warning Symbols Used in this Manual .....	7	Changing Advanced Settings .....	32
Overview .....	9	Telephone Setup .....	33
Hardware/Software Requirements .....	9	Telephone Dialing Mode .....	36
About this Product.....	9	about TeleSky.....	40
What is PSTN? .....	10	Frequently Asked Questions .....	41
What is Skype™? .....	10	Specifications.....	52
Package Contents.....	11	Contact Information.....	53
Product Views .....	12		
Installation .....	13		
Connecting Your Phone .....	15		
Installing Software .....	17		
Installing Skype.....	17		
Installing and Configuring the ASUS TeleSky Utility .....	18		

# Overview

This section provides an overview of the Telecom Adapter Card's main features, and requirements.

## Hardware/Software Requirements

- PC running Windows 2000 (SP4), XP (SP2) or MCE
- Minimum 1 GHz processor or above
- Minimum 256 MB RAM or above
- Minimum 40 MB free hard disk space
- Internet connection: either dial-up (min. 33.6 Kpbs) or broadband (cable, DSL, etc.)
- 1 free expansion slot on your PC

## About this Product

The TeleSky TA-CP400 is an advanced telecom adapter card that allows you to use your landline telephone and PC with the Skype VOIP (Voice Over Internet Protocol) system. You can also use the card to make regular calls through your landline (PSTN) phone line.

## What is PSTN?

PSTN stands for Public Switched Telephone Network and refers to the traditional telephone network used to make and receive calls through most home and office fixed phone lines.

In this manual, PSTN lines are referred to as 'landlines'.

## What is Skype™?

Skype™ is a VOIP (Voice Over Internet Protocol) system and enables you to make low-cost calls over the Internet. You can make calls to other online Skype users for free and to external landline and mobile phone numbers using SkypeOut for a fraction of the price of regular calls.

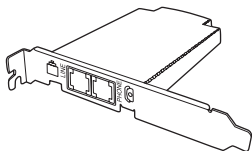


Subscribed Feature:

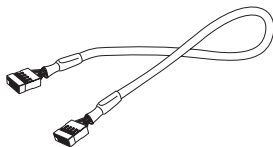
Skype™ is a registered trademark of Skype™ Technologies S.A. and is not in any way connected to ASUSTek Computer Inc. To create and account, download the Skype™ program, and to know more about this program, visit [www.skype.com](http://www.skype.com).

# Package Contents

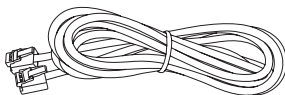
Ensure you have all of the following before you proceed.  
If any items are missing, contact your local vendor immediately.



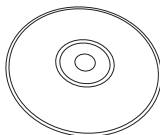
ASUS TeleSky



Internal USB Connector Cable



Telephone Cable \*



Support CD

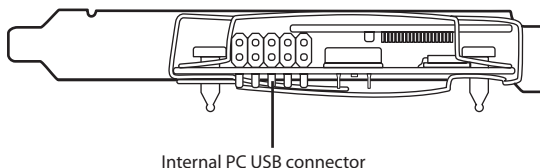
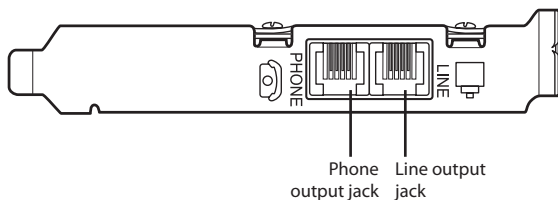


Quick Start Guide



\* A phone jack is required to connect your telephone to the Telecom Adapter Card.

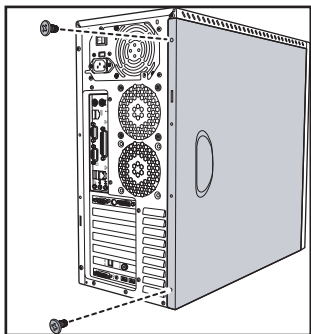
# Product Views



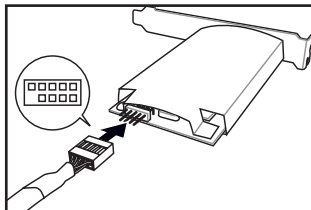
# Installation

This section provides information on how to install the telecom adapter card in your desktop PC, make all necessary connections, and install the ASUS TeleSky software and Skype™ software.

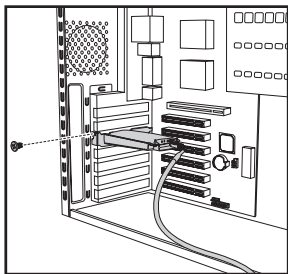
Remove the screws securing the PC casing.



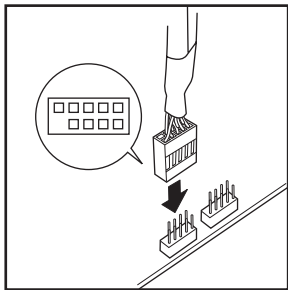
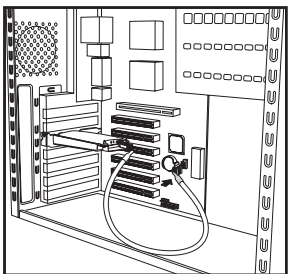
Attach the internal USB connector cable to the connector at the rear of the card.



Remove the cover from one of the expansion slots on your PC. Insert and secure the Telecom Adapter Card as shown.



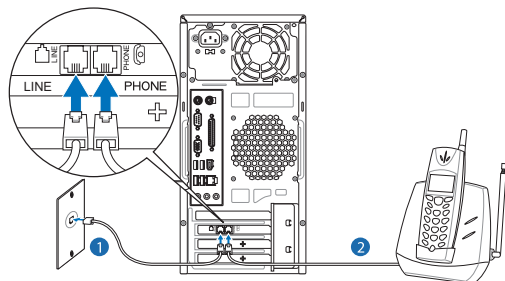
Attach the connector cable to the USB connector on your PC motherboard as shown.





# Connecting Your Phone

To connect your telephone to the Telecom Adapter Card and the card to your landline telephone jack, follow the steps below.



To make the connections, do the following:

1. Connect one end of your original landline telephone cable to the LINE jack on the Telecom Adapter Card. Connect the other end to your landline telephone jack.
2. Connect one end of the second telephone cable, enclosed in this package, to the PHONE jack on the Telecom Adapter Card and the other to the connector jack on the phone itself.

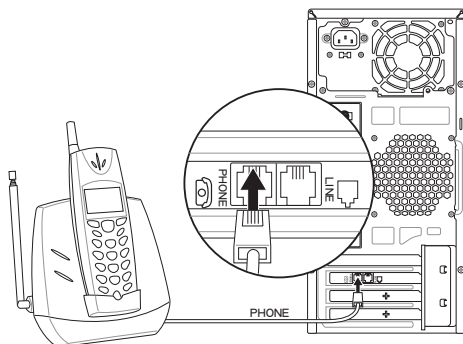


## Note:

This is the recommended setup. However, you can also connect only your telephone to the Telecom Adapter Card if you want to make calls solely through Skype.

## *Connecting to Make Only Skype Calls*

To connect your telephone to the Telecom Adapter Card and make calls solely through Skype, follow the steps below.



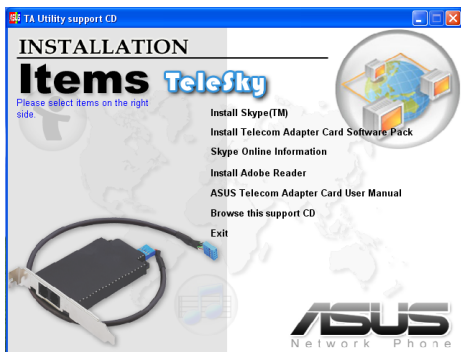
To make the connections, do the following:

Connect your one end of the telephone cable, enclosed in this package, to the PHONE jack on the Telecom Adapter Card and the other to the connector jack on the phone itself.

# Installing Software

To install the ASUS TeleSky software, Skype™ and other bundled software, insert the supplied CD-ROM in your CD-ROM drive. Setup will begin automatically. If it does not start automatically, browse for the setup.exe file in your local CD-ROM drive.

The main menu appears. Click to choose the software you wish to install.



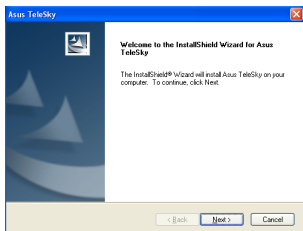
## Installing Skype

To install Skype, select Install Skype™ from the CD-ROM main menu. Follow the on-screen instructions to install.

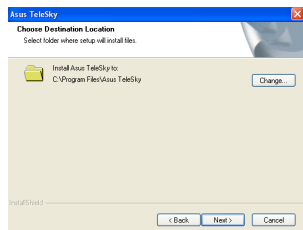
# Installing and Configuring the ASUS TeleSky Utility

Click Install Telecom Adapter Card Software Pack from the main menu.

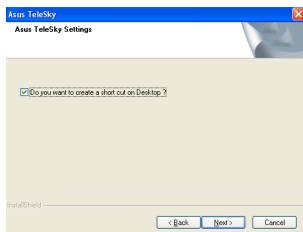
The installation wizard appears. Click Next to continue.



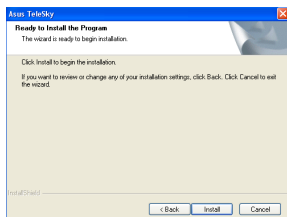
Select the destination folder and click Next to continue.



Select to create a shortcut to the program on your desktop. Click Next to continue.

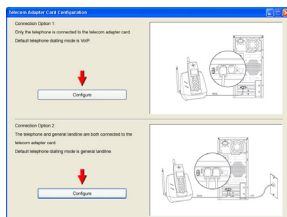


The program is now ready to install. Click Install to continue.



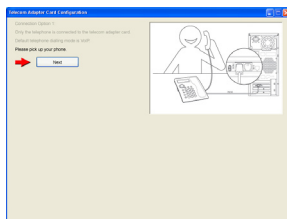
Once installed, the Telecom Adapter Card Configuration begins.

Choose the connection option you require and click Configure.

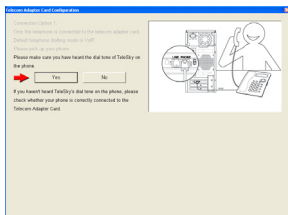


## Connection Option 1

If you choose to connect only your telephone to make calls solely through Skype, a prompt appears. Pick up your phone and click Next.



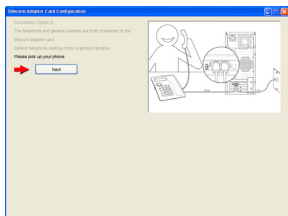
If you hear a ringtone, click Yes. If not, click No, check your telephone is correctly connected to the PHONE port on the Telecom Adapter Card and try again.



Once configured correctly, the Finish screen appears. Select the options you require, choose to reboot your computer now or later and click Configure Complete.

## Connection Option 2

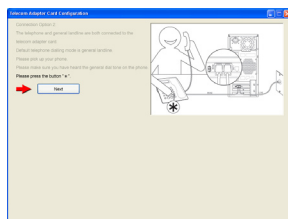
If you choose to connect both your telephone and landline to the Telecom Adapter Card, a prompt appears. Pick up your phone and click Next.



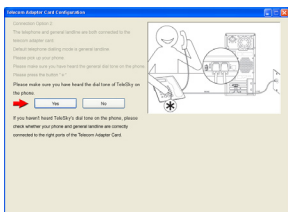
If you hear a ringtone, click Yes. If not, click No, check your telephone and landline are correctly connected to their respective ports on the Telecom Adapter Card and try again.



Press '\*' on your telephone keypad and click Next.



If you can hear the Skype ringtone, click Yes. If not, click No, check your telephone and landline are correctly connected to their respective ports on the Telecom Adapter Card and try again.



Once configured correctly, the Finish screen appears. Select the options you require, choose to reboot your computer now or later and click Configure Complete.

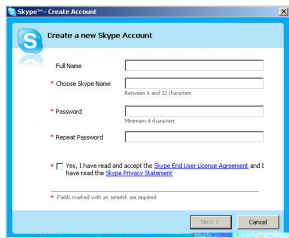
# Start Talking!

This section provides instructions to help you get up and running with the ASUS TeleSky utility as quickly as possible, and covers all the main functions of the software.

## Opening a New Skype Account

Before you can start using the ASUS TeleSky utility, you must first open a Skype account. The Create Account wizard appears the first time Skype opens.

Enter a username, password, and email address. Click Sign In to continue.



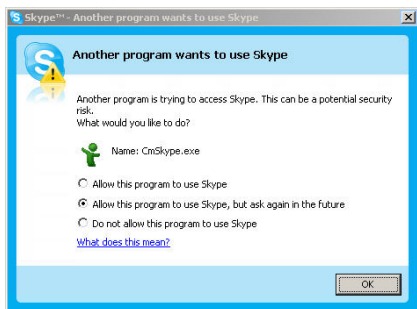
Enter your personal details and click Next to continue.



The Getting Started Wizard begins. Click Next to continue and follow all onscreen instructions to set up your account.



Once installed Skype™ and Telecom Adapter Card Software, when you log in to skype, a prompt appears. Select Allow this program to use Skype and click OK.



## Topping Up Your Account

In order to use the Skype out function and make calls to other landline or mobile numbers, you must first purchase calling credit through the Skype website.

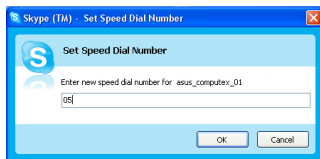
The Skype log in page will appear in your browser. Enter your username and password. The Your account page will load. You can top up your credit from here.

# Setting Speed-Dial number

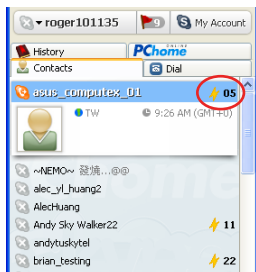
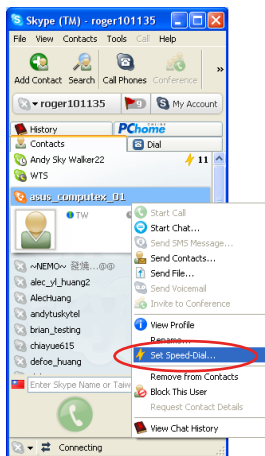
You can set the Speed-Dial number for your contacts to speed up the call.

Setting a Speed-Dial number:

1. Press right key at the contact and click Set Speed-Dial.
2. Enter the Speed-Dial number. (you can only enter 01 to 99)



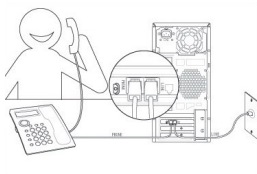
3. You will see the Speed-Dial number appears on the right side of the contact.



# Making Your First Call

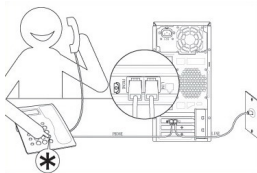
The Telecom Adapter Card allows making calls through your landline phone easy and straightforward. If your telephone and home landline are connected to the Telecom Adapter Card, the default dialing mode is through your landline. Press '\*' to switch the dialing mode to Skype.

## Making a PSTN Call:



1. Pick up your phone.
2. Ensure you can hear the landline dial tone.
3. Dial the desired phone number to make a PSTN call.
4. Hang up the phone to end your call.

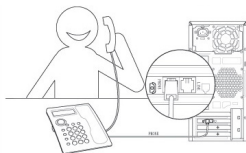
## Making a Skype Call:



1. Pick up your phone and you will hear the landline dial tone.
2. Press '\*' to switch mode from landline to Skype mode (when both your telephone and home landline are connected to the Telecom Adapter Card, the default calling mode is through your landline).

3. Ensure you can hear the Skype dial tone.
4. Enter the desired SkypeOut number or speed dial.
5. Press '\*' after you have completed dialing to dial out Skype calls.
6. Hang up the phone to end your call.

Alternatively, if only your telephone is connected to the Telecom Adapter card, you can only make Skype calls. The default dialing mode is through Skype.



1. Pick up your phone.
2. Ensure you can hear the Skype dial tone.

3. Enter the desired SkypeOut number or speed dial.
4. Press '\*' after you have completed dialing to dial out Skype calls.
5. Hang up the phone to end your calls.



### Making a SkypeOut call

- Dialing to PSTN calls:  
Pick up the phone, and press "00" , dial the desired country code plus zip code, and dial the number that you want to call.  
Ex: 00 -> 886 -> 2 -> 1234567
- Dialing to Cellphone calls:  
Pick up the phone, and press "00" , dial the desired country code and dial the cellphone number that you want to call.  
Ex: 00 -> 886 -> 937123123

## Function Shortcuts:

The following telephone key shortcuts are available during your call:

Shortcut	Function	Description
*	Dialing mode switch	Switches phone dialing mode: Skype mode --> general landline mode; or General landline mode --> Skype mode.
		in Skype mode,dial the phone number or the skype speed-dial number ,then dial * again to dial up the skype call.
*#	Accept interrupting calls (call waiting)	Answers another call by putting it on hold. If you have another call on the line while engaged in a call, press '*#' to answer the 2nd call and put the first call on hold.
		Switches between Skype calls. When you have multiple Skype calls on hold, press '*#' to be able to switch back and forth between calls.
**	Enable multi Skype call (3-way telephoning)	Begins a multi Skype call. If you have another incoming Skype call during your own Skype call, press '**' to begin a multi-contact conversation.




### Notes:

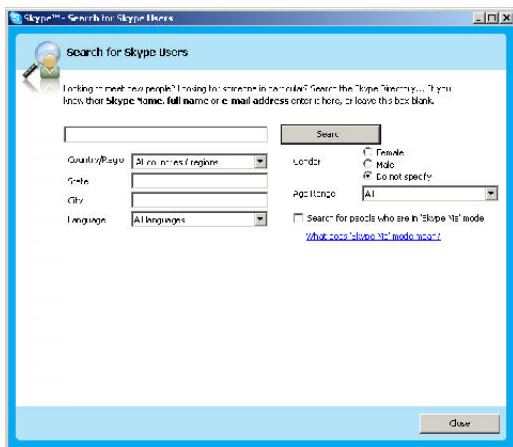
- User can use telephone key shortcuts to enable multi Skype call from incoming calls, but to dial out multi Skype call, please refer to "Skype Conference" section on page 31.
- Regardless of PC, ASUS TeleSky utility, or telecom adapter card status, your landline will always function as normal when connected to the Telecom Adapter Card.
- If your first call is through PSTN, and the incoming call is through Skype, the PSTN call will be terminated when you accept the Skype call (no Skype incoming call alert is heard).
- If your first call is through Skype, and the incoming call is through PSTN, the Skype hold will be put on hold (an incoming PSTN call alert is heard).
- If your first call is through Skype, and the incoming call is also through Skype, the first call will be put on hold (an incoming

# Managing Contacts

## Searching for Contacts

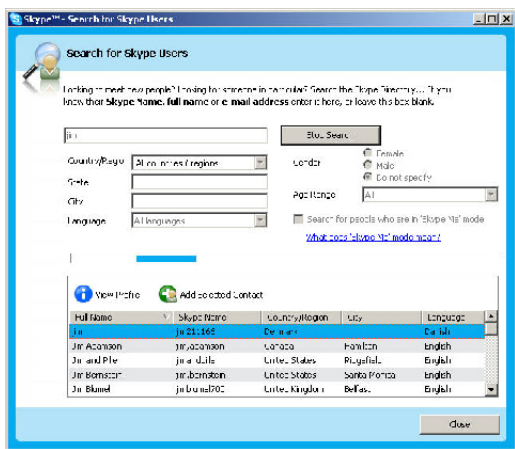
If you need to find other Skype users and add them to your contact list, the easiest way to do so is by using the search function.

Click the  icon in the Skype menu to begin the search. The Search for Skype Users screen appears.



Complete the fields with the information for the user you wish to find. Click Search to begin searching.


All results will be displayed in a list at the bottom of the screen.

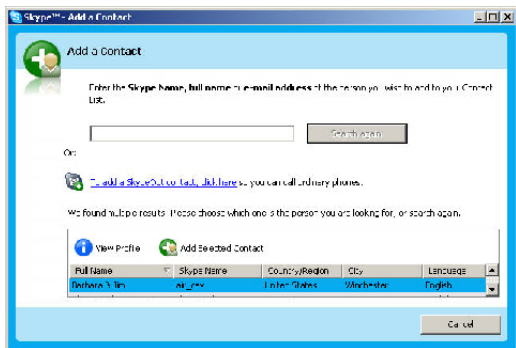


Scroll through the list until you find the user you are looking for. Double click on the user's name and a prompt appears.

Click Add Selected Contact to add the user to your phonebook.

## Adding Contacts

To add a contact, click the  icon in the Skype menu. The Add a Contact screen appears.



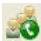
To add a Skype contact, enter the Skype name, full name or email address of the person you wish to add.

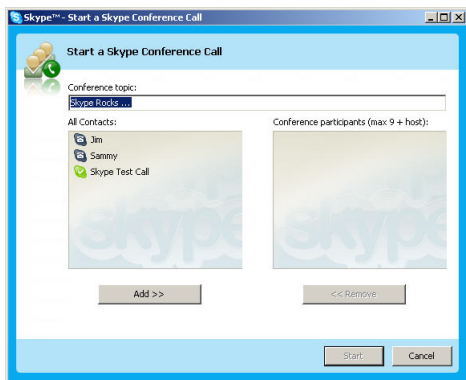
Click Search and the system will search the network. The results are displayed in a list. Double click the Skype name to add a contact.

To add a SkypeOut contact click the link and enter the name and telephone number of the contact you wish to add. Click Add Contact and the new contact is added to your phonebook.



## Skype Conference

You can also begin a conference call with two or more contacts through Skype. Click the  icon. The conference call screen appears.



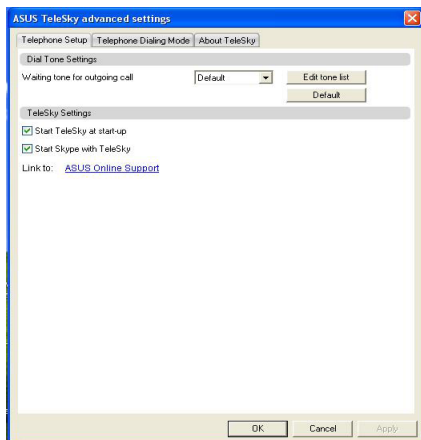
Select the contacts you wish to invite to the call and click Add to add them to the Conference participants list.

To remove contacts, select and click Remove.

Click Start to begin the conference call.

# Changing Advanced Settings

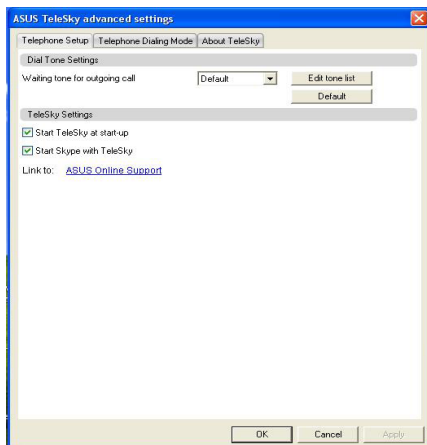
This section provides instructions on how to change the advanced settings of the ASUS TeleSky utility. The Advanced Settings screen displays all advanced system settings.



Click the tabs at the top of the screen to access each setting screen. See the following sections for an explanation of each screen.

# Telephone Setup

Click the Telephone Setup tab. The Telephone Setup screen appears. Here you can adjust all Telephone settings.



See the following sections for an explanation of each available setting.

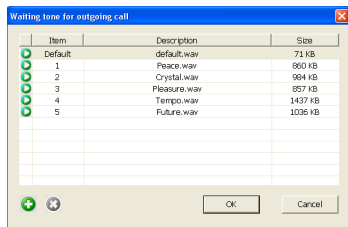
Once all settings have been completed, click Apply and OK to save all changes.

## Dial Tone Customization

To set the waiting tone for outgoing calls, do the following:


Select a tone from the dropdown list or Default to select the default tone.

To edit your tones, click Tone list edit. The tone list edit screen appears.



Select the tone you wish to use and click Apply and OK to save all settings.

To add a new tone, click the  icon. A browser window appears. Select the location of the tone and click OK.

To delete a tone, select the tone from the list and click the  icon.



Note:

Ring tone limitations:

1. Ring tones must be in .wav format.
2. Ring tones cannot be larger than 1MB in size.

## Changing TeleSky Settings

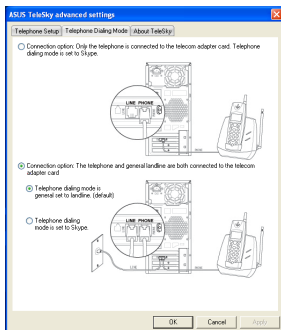
Check the checkboxes against the TeleSky settings you wish to enable.

If you check these two checkboxes, everytime you start-up the windows, the TeleSky utility and Skype will start automatically.

Once all settings have been completed, click Apply and OK to save all changes.

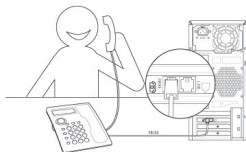
# Telephone Dialing Mode

Click the Telephone Dialing Mode tab. The Telephone Dialing Mode screen appears. Here you can adjust connection settings.



You can choose to only connect your telephone to the telecom adapter card or connect both your telephone and landline to the adapter card.

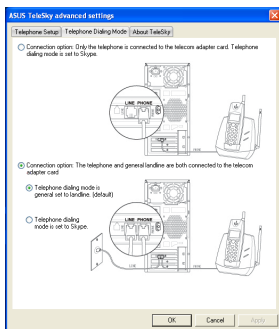
Connection Option 1 - to make only Skype calls:



1. Pick up your phone.
2. Ensure you can hear the Skype dial tone.

3. Enter the desired SkypeOut number or speed dial.
4. Press '\*' after you have completed dialing to dial out Skype calls.
5. Hang up the phone to end your call.

If you choose the latter, additional radio buttons become available:

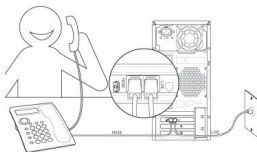


Check the radio boxes to select the dialing mode; either through Skype or through your landline (the default setting).

Once all settings have been completed, click Apply and OK to save all changes.

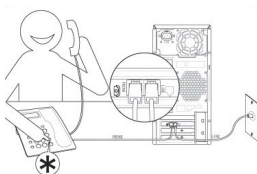
## Connection Option 2 - to make both Skype and landline calls:

When landline mode is set as default:



### Making PSTN calls:

1. Pick up your phone.
2. Ensure you can hear the landline dial tone.
3. Dial the desired phone number to make a PSTN call.
4. Hang up the phone to end your call.

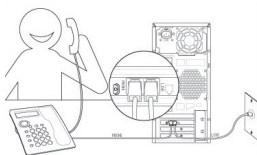


### Making Skype calls:

1. Pick up your phone and you will hear the landline dial tone.
2. Press '\*' to switch mode from landline to Skype mode.
3. Ensure you can hear the Skype dial tone.
4. Enter the desired SkypeOut number or speed dial.
5. Press '\*' after you have completed dialing to dial out Skype calls.
6. Hang up the phone to end your calls.

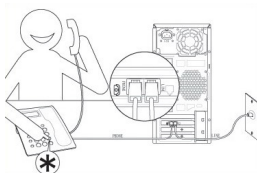


When Skype mode is set as default:



Making Skype calls:

1. Pick up your phone.
2. Ensure you can hear the Skype dial tone.
3. Enter the desired SkypeOut number or speed dial.
4. Press '\*' after you have completed dialing to dial out Skype calls.
5. Hang up the phone to end your calls.

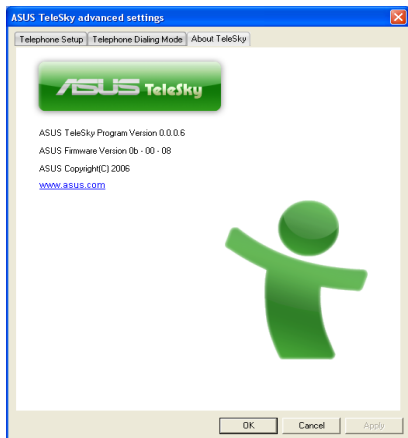


Making PSTN calls:

1. Pick up your phone and you will hear the Skype dial tone.
2. Press '\*' to switch mode from Skype to landline mode.
3. Ensure you can hear the landline dial tone.
4. Dial the desired phone number to make a PSTN call.
5. Hang up the phone to end your calls.

## About TeleSky

Click the About TeleSky tab. The About TeleSky screen appears. Here you can view information on the TeleSky software.



Click OK to exit the advanced setting menus.

# Frequently Asked Questions

This section provides solutions to problems or questions that may arise during the installation and operation of the Telecom Adapter Card.

See the following for the most common questions and problems. If you cannot find your answer here, contact ASUS technical support directly, on the numbers found at the end of this manual.



Why does the ASUS TeleSky utility icon appear inactive (gray) in the system tray?



Make sure you are logged into Skype. If not, log in to activate the ASUS TeleSky utility.

Q

Why is there no Skype dial tone when I enable Skype Dial mode?

A

Cable deployment may be incorrect or your PSTN phone line is not properly connected. Check all cable connections and run the device set-up diagnostic utility on the support CD.

The ASUS TeleSky utility may not be running. Launch both the utility and Skype to ensure a Skype dial tone is heard.

You may not be logged into Skype. Log in to your Skype account.

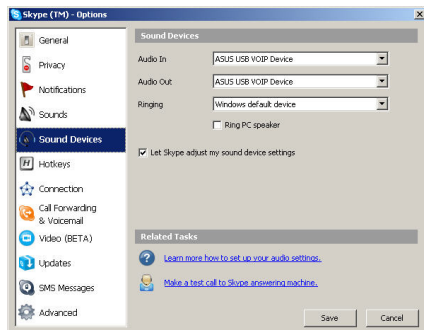
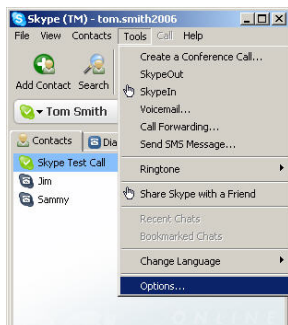
The Skype sound settings may be incorrect.

1. Go to Skype > Tools > Options > Sound Devices.

## 2. Configure the settings as follows:

Audio In: ASUS USB VOIP Device

Audio Out: ASUS USB VOIP Device



Q

Why does the phone not ring when a normal call or Skype call comes in?

A

The phone ringer may be off or too low to hear. Adjust the ringer volume.

Cable deployment may be incorrect or your PSTN phone line is not properly connected. Check all cable connections and run the device set-up diagnostic utility on the support CD.

The ASUS TeleSky utility may not be running. Launch both the utility and Skype to ensure a Skype dial tone is heard.

You may not be logged into Skype. Log in to your Skype account.

Q

What should I do if I want to use other Skype devices, such as a headset rather than a regular phone? What if I cannot hear any sound from these other devices?

A

Exit the ASUS TeleSky utility and restart Skype.

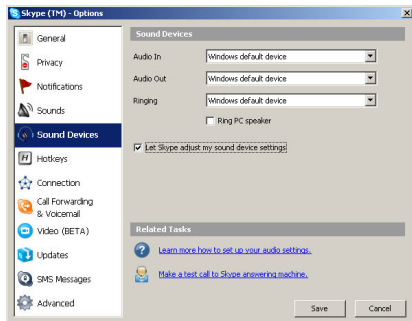
The Skype sound settings may be incorrect.

1. Go to Skype > Tools > Options > Sound.
2. Configure the settings as follows:

Audio In: Desired Skype Device or Windows Default Device.

Audio Out: Desired Skype Device or Windows Default Device.

Ringling: Desired Skype Device or Windows Default Device.





Why can I not hear any system sounds or alerts from the PC speakers when running the ASUS TeleSky utility?

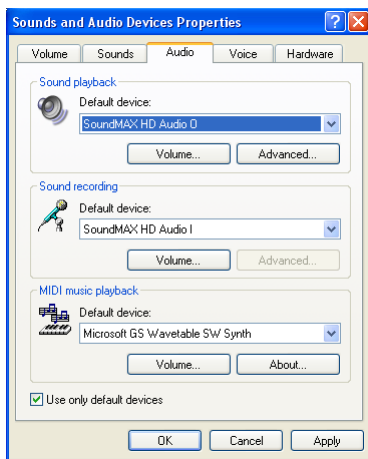


The default PC audio settings may be incorrect.

1. Go to Start > Control Panel > Sound and Audio Devices > Audio.
2. Configure the settings as follows:

Sound playback: Windows  
Default Device.

Sound recording: Windows  
Default Device.



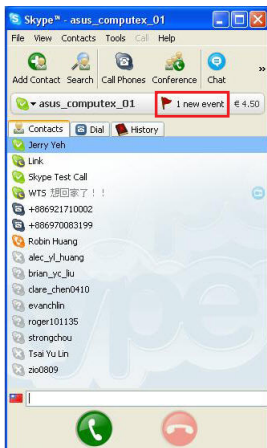


Q

I have a new Skype voicemail following a missed call. How can I listen to it?

A

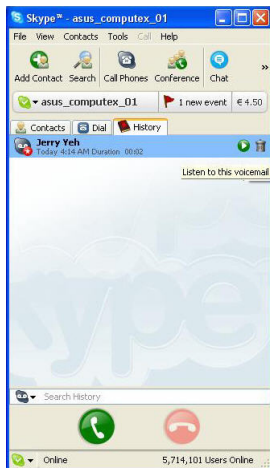
Missed calls and new voicemails are indicated as 'new events' in the Skype window:



To listen to new voicemails do the following:

Open Skype and click the 'new event' button (marked with a red flag).

The History window opens:

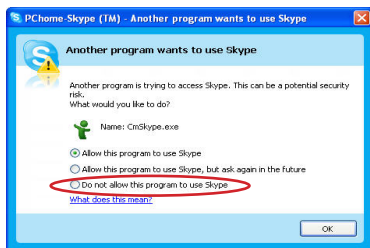


Select the voicemail you wish to listen to from the list.

Click  to play the message or  to delete it.

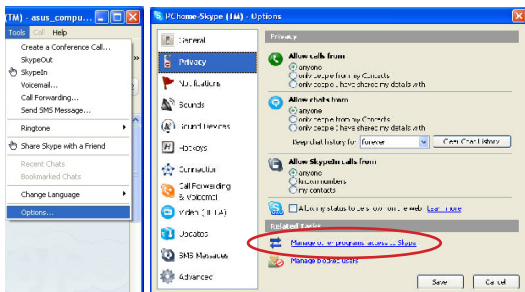
Q

After I finish installing the TeleSky utility, the following window appears on the screen. If I choose “Do not allow this program to use Skype”, then how do I re-activate the Skype phone?

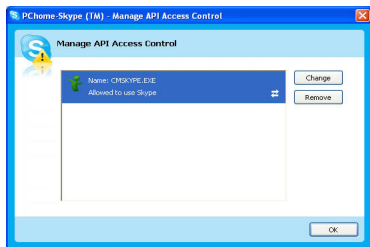


A

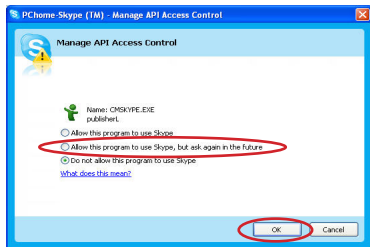
Go to Skype > Tools > Options > Privacy, click “Manage other programs’ access to Skype”.




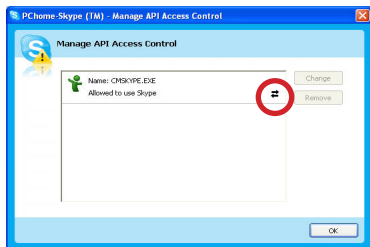
Then the following window appears, select the TeleSky icon and click “Change”.



Then the following window shows, select “Allow this program to use Skype” and click “OK”.



Then the “Manage API access control” frame appears, you will see the  icon appears on the right side of the TeleSky icon. This means the program is activated.



# Specifications

Category	Details
Dimensions	100 x 55 x 15 mm
System Interface	USB interface
OS Support	Windows 2000(SP4)/XP(SP2)/MCE/XP64
I/O	2 x RJ11 jacks for Phone and PSTN cable
Features	Dual Mode Telephoning: PSTN and Skype
	Support PSTN call (PSTN in/PSTN out)
	Support Skype Call (Skype/SkypeIn/SkypeOut/Skype Conference)
	Support Call waiting for Skype
	Support 3-way telephoning for Skype
	Support Speed-dial for Skype
	Dial tone customization
Accessories	1 x 9-pin internal USB cable
	1 x 1.8m Line cable
	Support CD, Quick Start Guide
System Requirement	PC running OS : Windows 2000(SP4)/XP(SP2)/MCE/XP64
	Minimum 1 GHz Processor or better
	Minimum 256MB RAM or more for best performance
	Minimum 40 MB of free hard disk space
	Internet connection: either dial-up at minimum 33.6Kbps modem, or any broadband: Cable,DSL,etc.(Broadband provides better Skype quality.Voice quality may vary with connection speed.)

A Dual Internet Telecom Adaptor card is highly integrated application for PC VoIP (Voice Over Internet Protocol) and traditional PSTN calls. It allows you to make PC VoIP and traditional PSTN calls with your house phone. Skype Conference and call forwarding are also possible. This card is specially designed for PC assembly to enhance PC's value.

# Contact Information

## ASUSTek COMPUTER INC. (Asia-Pacific)

Address: No. 15, Li-Te Rd., Peitou, Taipei, Taiwan R.O.C  
Tel: 886-2-2894-3447

### Technical Support:

Toll-free Hotline: 0800-093-456 (24 hour service)  
Fax: 886-2-2890-7698  
Website: <http://tw.asus.com>

## ASUS COMPUTER INTERNATIONAL (America)

Address: 44370 Nobel Drive, Fremont, CA 94538, USA.  
Tel: +1-502-995-0883  
Fax: +1-502-933-8713  
Email: [tmdl@asus.com](mailto:tmdl@asus.com)

### Technical Support:

Tel: +1-502-995-0883  
Fax: +1-502-933-8713  
Email: [tsd@asus.com](mailto:tsd@asus.com)  
Website: <http://usa.asus.com>

## ASUS COMPUTER GmbH (Germany/Austria)

Address: Harkort Str. 25, D-40880 Ratingen, Germany

Tel: +49-2102-95990

Fax: +49-2102-959911

Website: <http://www.asuscom.de>

Online Support: <http://www.asuscom.de/sales>  
(Queries pertaining to marketing only)

### Technical Support:

Tel: +49-2102-95990 (Motherboard/Others)

+49-2102-959910 (Notebooks)

Fax: +49-2102-959911

Email: <http://www.asuscom.de/support>

15G06J009000