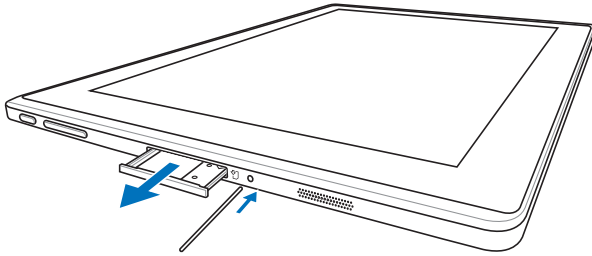


Eee Pad 快速用户手册

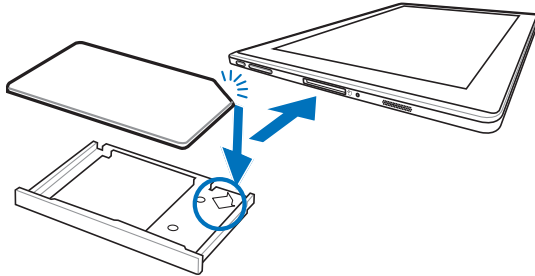
TF101G 3G 连接设置

安装 SIM 卡

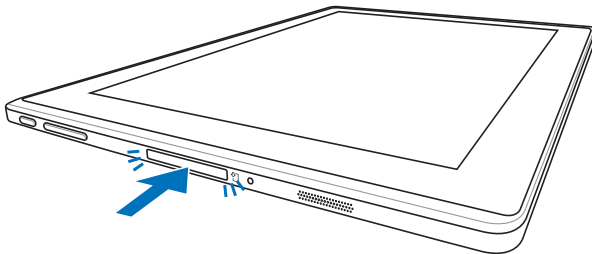
1. 请使用回形针按压 SIM 卡插槽旁的退出孔。

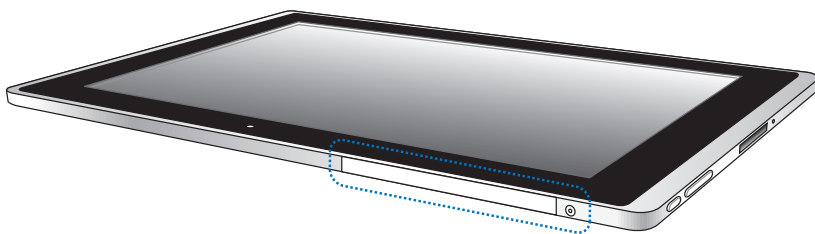


2. 请将支架由插槽中取出，将 SIM 卡水平放置于托架上。



3. 将支架推入 SIM 卡插槽内，并推至底部。





3G 天线位于 Eee Pad 的机身上方。

APN 设置

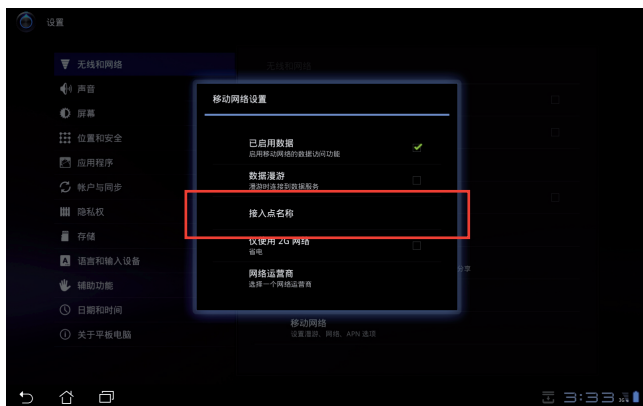
在您安装 SIM 卡后，Eee Pad 将自动检测并进行 3G 连接。若是 Eee Pad 未进行自动设置时，请依照以下的说明于 Eee Pad 上手动设置接入点名称（APN）。

请依照以下步骤进行 APN 设置：

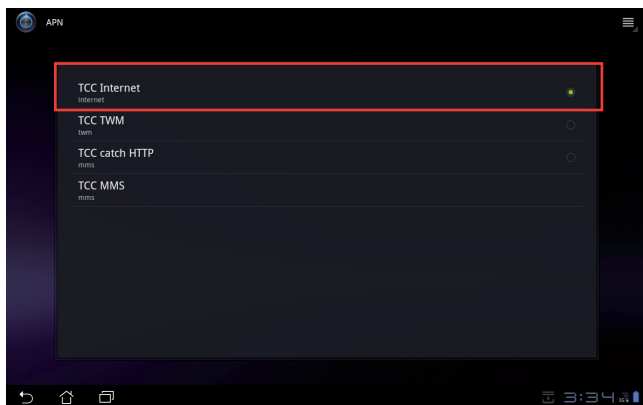
1. 请由桌面右上角点击 应用程序 并选择 设置。
2. 请点击 无线和网络 并选择 移动网络。



3. 请点击 接入点名称。



4. 请选择您的网络运营商。



5. 请联络您的网络运营商询问 APN 的相关信息并填写以下内容，请拖动滚动条查看完整信息。



APN 设置的内容依网络运营商而异，通常您需要填写 APN、MMSC、彩信代理、MCC 和 MNC。



当 Eee Pad 同时使用无线网络与 3G 连接时，无线网络拥有优先权，Eee Pad 会通过无线网络连接至互联网。若您欲使用 3G 连接时请先关闭无线网络功能。

附录

RF Exposure information (SAR)

THIS MODEL MEETS INTERNATIONAL GUIDELINES FOR EXPOSURE TO RADIO WAVES.

Your mobile device is radio transmitter and receiver. It's designed not to exceed the limits for exposure to radio waves recommended by international guidelines. These guidelines were developed by the independent scientific organization ICNIRP and include safety margins designed to assure the protection of all persons, regardless of age and health.

The guidelines use a unit of measurement known as the Specific Absorption Rate, or SAR. The ICNIRP SAR limits for mobile devices used by the general public are as follows:

Eee Pad TF101G

Max. SAR Measurement (10g)

GSM 900: 1.38 W/kg

GSM 1800: 0.907 W/kg

WCDMA I: 1.19 W/kg

WCDMA VIII: 1.27 W/kg

WLAN 2.4G: 0.153 W/kg

This equipment may be operated in:							
AT	BE	BG	CH	CY	CZ	DE	DK
EE	ES	FI	FR	GB	GR	HU	IE
IT	IS	LI	LT	LU	LV	MT	NL
NO	PL	PT	RO	SE	SI	SK	TR

- **Products with 2.4–GHz Wireless LAN Devices France**

L'utilisation de cet équipement (2.4GHz wireless LAN) est soumise à certaines restrictions: cet équipement peut être utilisé à l'intérieur d'un bâtiment en utilisant toutes les fréquences de 2400 à 2483.5MHz (Chaîne 1–13). Pour une utilisation en environnement extérieur, les fréquences comprises entre 2400-2454 MHz (Chaîne 1-9) peuvent être utilisées. Pour les dernières restrictions, voir <http://www.art-telecom.fr>.

For 2.4–GHz wireless LAN operation of this product, certain restrictions apply. This equipment may use the entire–2400–MHz to 2483.5–MHz frequency band (channels 1 through 13) for indoor applications. For outdoor use, only 2400-2454 MHz frequency band (channels 1-9) may be used. For the latest requirements, see <http://www.art-telecom.fr>.

- **Wireless LAN Module's Maximum EIRP**

Frequency Ranges (MHz)	Indoors	Outdoors
2400 MHz ~ 2446.5 MHz	10mW	Not Permitted
2446.5 MHz ~ 2483.5 MHz	100mW	100mW on private property with Ministry of Defense approval.

- Users only use the charge with Adaptor, you can not use the connection to USB interfaces with USB 2.0 version or higher.
- Please make sure the temperature for adaptor will not be higher than 40 °C
- Please make sure the temperature for device will not be higher than 40 °C
- The device could be used with a separation distance of 0cm to the human body.
- The adaptor shall be installed near the equipment and shall be easily accessible.

EC Declaration of Conformity



We, the undersigned,

Manufacturer:	ASUSTek COMPUTER INC.
Address, City:	No. 150, LI-TE RD., PEITOU, TAIPEI 112, TAIWAN R.O.C.
Country:	TAIWAN
Authorized representative in Europe:	ASUS COMPUTER GmbH
Address, City:	HARKORT STR. 21-23, 40880 RATINGEN
Country:	GERMANY

declare the following apparatus:

Product name :	Notebook PC
Model name :	TF101G

conform with the essential requirements of the following directives:

2004/108/EC-EMC Directive

<input checked="" type="checkbox"/> EN 55022:2006+A1:2007	<input checked="" type="checkbox"/> EN 55024:1998+A1:2001+A2:2003
<input checked="" type="checkbox"/> EN 61000-3-2:2006	<input checked="" type="checkbox"/> EN 61000-3-3:2008
<input type="checkbox"/> EN 55013:2001+A1:2003+A2:2006	<input type="checkbox"/> EN 55020:2007

1999/5/EC-R &TTE Directive

<input checked="" type="checkbox"/> EN 300 328 V1.7.1(2006-05)	<input checked="" type="checkbox"/> EN 301 489-1 V1.8.1(2008-04)
<input type="checkbox"/> EN 300 440-1 V1.4.1(2008-05)	<input type="checkbox"/> EN 301 489-3 V1.4.1(2002-08)
<input type="checkbox"/> EN 300 440-2 V1.2.1(2008-03)	<input type="checkbox"/> EN 301 489-4 V1.3.1(2002-08)
<input checked="" type="checkbox"/> EN 301 511 V9.0.2(2003-03)	<input checked="" type="checkbox"/> EN 301 489-7 V1.3.1(2005-11)
<input checked="" type="checkbox"/> EN 301 908-1 V3.2.1(2007-05)	<input type="checkbox"/> EN 301 489-9 V1.4.1(2007-11)
<input checked="" type="checkbox"/> EN 301 908-2 V3.2.1(2007-05)	<input checked="" type="checkbox"/> EN 301 489-17 V2.1.1(2009-05)
<input checked="" type="checkbox"/> EN 301 893 V1.4.1(2005-03)	<input checked="" type="checkbox"/> EN 301 489-24 V1.4.1(2007-09)
<input checked="" type="checkbox"/> EN 302 544-2 V1.1.1(2009-01)	<input type="checkbox"/> EN 302 326-2 V1.2.2(2007-06)
<input checked="" type="checkbox"/> EN 62311:2008	<input type="checkbox"/> EN 302 326-3 V1.3.1(2007-09)
<input type="checkbox"/> EN 50371:2002	<input type="checkbox"/> EN 301 357-2 V1.3.1(2006-05)
<input type="checkbox"/> EN 50385:2002	<input checked="" type="checkbox"/> EN 302 623 V1.1.1(2009-01)

2006/95/EC-LVD Directive

<input type="checkbox"/> EN 60950-1:2006	<input type="checkbox"/> EN 60065:2002+A1:2006+A11:2008
<input checked="" type="checkbox"/> EN 60950-1:2006+A11:2009	

2009/125/EC-ErP Directive

Regulation (EC) No. 1275/2008 <input checked="" type="checkbox"/> EN 62301:2005	Regulation (EC) No. 278/2009 <input checked="" type="checkbox"/> EN 62301:2005
Regulation (EC) No. 642/2009 <input type="checkbox"/> EN 62301:2005	Ver. 110101

CE marking



(EC conformity marking)

Position : **CEO**

Name : **Jerry Shen**

Declaration Date: Jun. 10, 2011

Year to begin affixing CE marking:2011

Signature : _____

