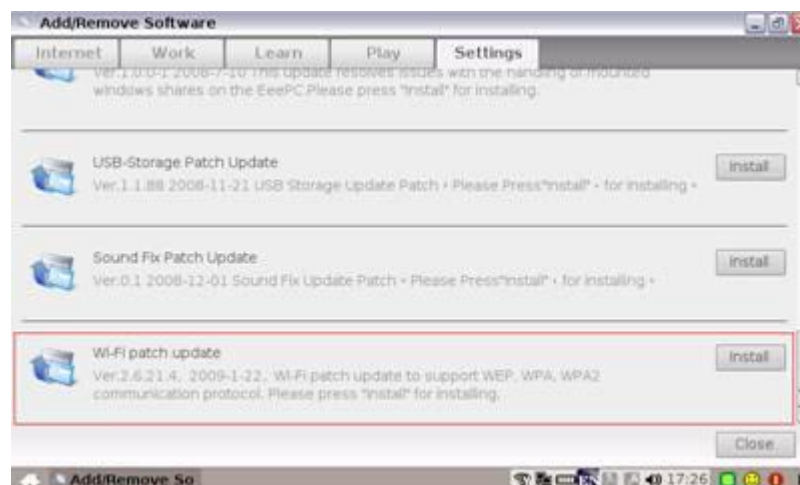


The 701 WIFI installation's SOP as below:

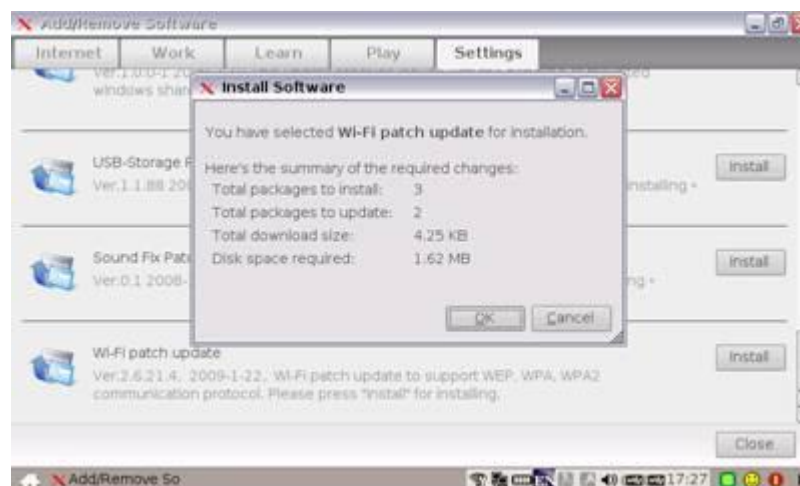
1. Click "Add/ remove software" icon.



2. Choose "Settings" page and find out "Wi-Fi patch update" item, and then click "install" button.



3. A pop-up window will let user know the information about the package size and numbers that will be installed.



4. Once the update packages has been finished installation, another pop-up window will ask user to restart the EeePC.

