

E3674

*Eee PC*

# Quick Use Guide

**Eee PC 900 Series**

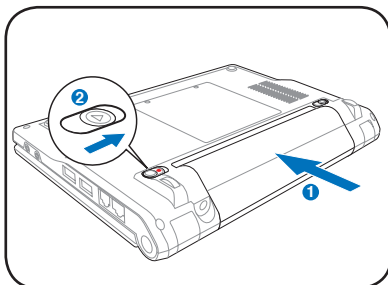


15G06Q013000

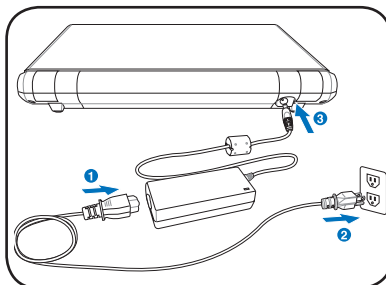
## Powering on your Eee PC

These are only quick instructions for using your Eee PC. Read the full manual for detailed information.

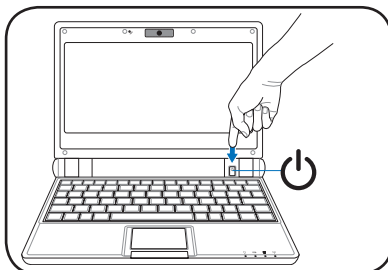
### 1. Install the battery pack



### 2. Connect the AC power adapter



### 3. Turn ON the Eee PC



Damage may occur if you use a different adapter to power the Eee PC. You may damage both your battery pack(s) and the Eee PC with a faulty AC-DC adapter.



When you open the display panel, do not force it down to the table or else the hinges may break! Never lift the Eee PC by the display panel!



Remember to fully charge the battery before first use and whenever it is depleted to prolong battery life.

## Status Indicators

Status indicators represent various hardware/software conditions.



Power Indicator



Solid State disk (SSD)  
Indicator



Battery Charge Indicator




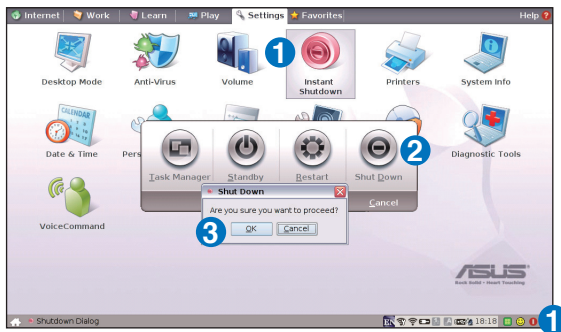
Wireless Indicator

# Powering off your Eee PC

Do the following instructions to turn down your Eee PC.

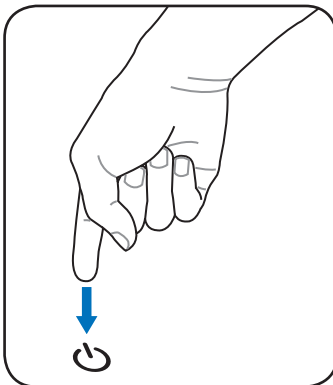
## A.

1. Click the red power switch  in the Notification area.  
Or, click **Instant Shutdown** from the **Settings** tab and select **Shutdown**.
2. Select **Shut Down** from the dialogue box.
3. Select **OK** to proceed.



## B.

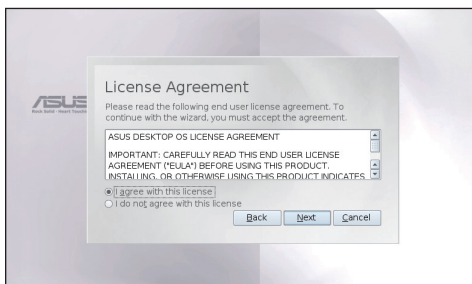
Or, press the power switch of the Eee PC directly, and follow the previous instructions to shut down your Eee PC.



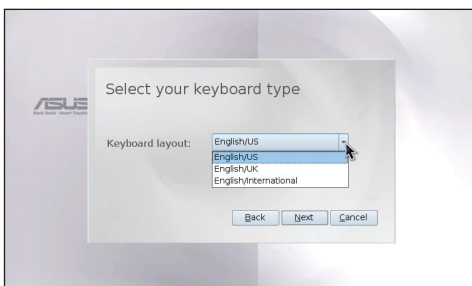
## Launching First Run Wizard

For the first time you start your Eee PC, the First Run Wizard will auto-launch and lead you through setting up your preferences and some basic information. Follow the wizard instructions to finish the initiation.

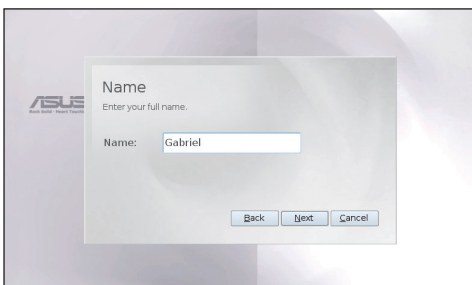
1. Toggle **I agree with this license** and click **Next** to continue.



2. Select your keyboard type and click **Next** to continue.



3. Enter your **User Name**. Click **Next** to continue.



3. Follow the on-screen instructions to complete the first run wizard.



ASUS Eee PC also supports Windows® XP operating system. Refer to user guide for detailed instructions and notices on installing the WinXP SP2 32 bit operating system.

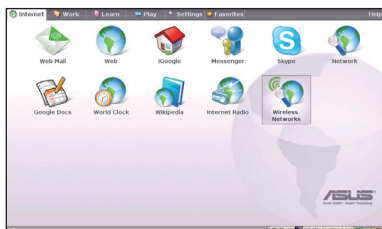
# Configuring a network connection

## Wireless network connection

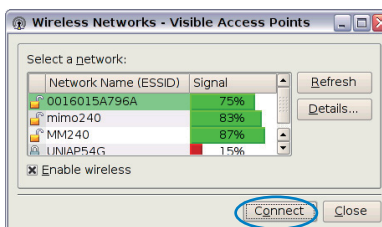
1. Press **Fn** + **F2** (<Fn> + <F2>) to activate the wireless LAN function.



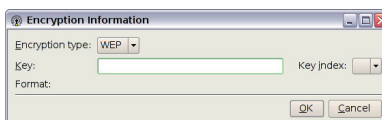
2. Click **Wireless Networks** from **Internet** tab.



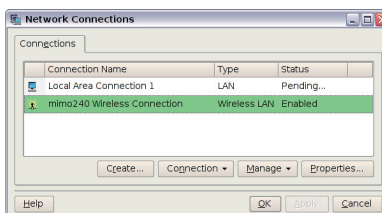
3. Select the wireless access point you want to connect to from the list and click **Connect** to build the connection. Ensure that the box before **Enable wireless** is checked.



4. When connecting, you may have to enter a password.



5. After a connection has been established, the connection is shown on the list.



6. And you can see the wireless signal strength bars in the Notification area.



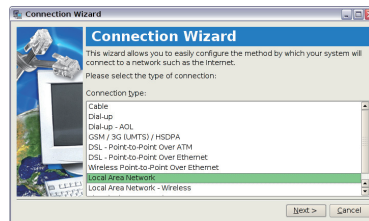
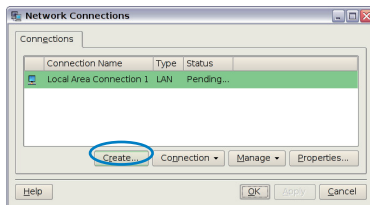
## Local Area Network

### Using a dynamic IP:

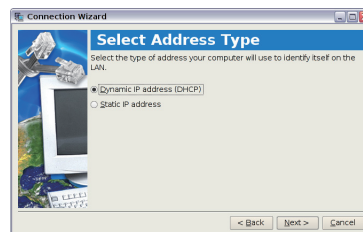
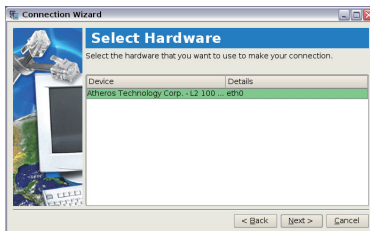
1. From the **Internet** tab, select **Network** to start the configuration.



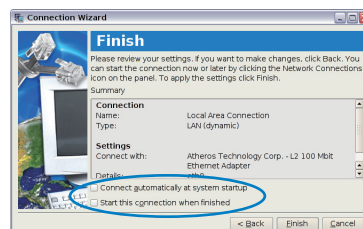
2. Click **Create** to create a network connection.
3. Select the type of connection you are using and click **Next**.



4. Select the hardware that you want to use to make your connection and click **Next**.
5. Toggle the first option Dynamic IP address (DHCP) and click **Next**.

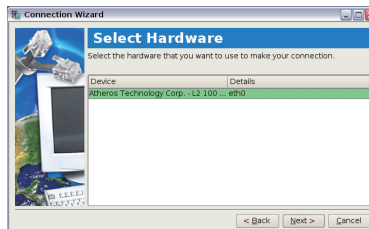
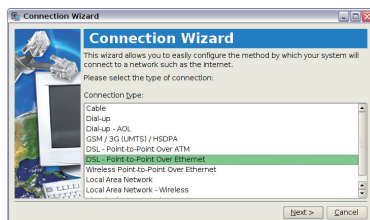


6. Enter a name for this connection and click **Next**.
7. Click **Finish** to apply the settings or click **Back** to make changes. Click the box before **Connect automatically at system startup** or before the box **Start this connection when finished** based on your needs.

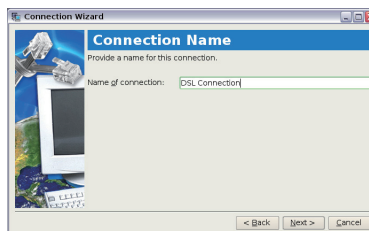


## Point-to-Point Protocol over Ethernet (PPPoE)

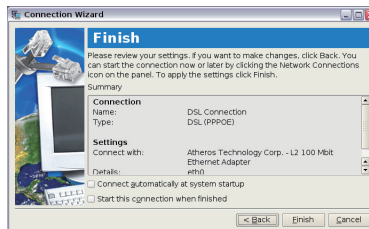
1. Repeat the step 1–2 of Using a static IP to start the PPPoE network configuration.
2. Select the type of connection 3. Select the hardware that you are using and click **Next**. you are using and click **Next**. you want to use to make your connection and click **Next**.



4. Enter your user and password 5. Enter a name for this connection and click **Next**. and click **Next**.. connection and click **Next**.

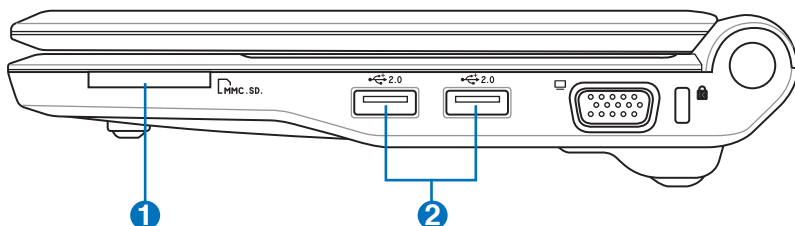


6. Click **Finish** to apply the settings or click **Back** to make changes.

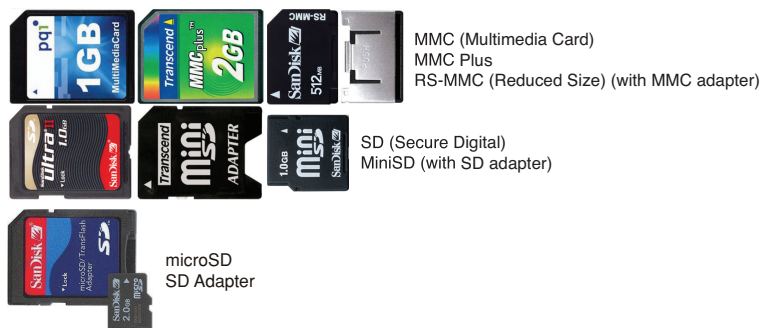


# Connecting removable devices

You can connect removable devices based on your needs.



## 1 Memory Card Slot



## 2 USB Port (2.0/1.1)

USB External Optical Disk Drive    USB External Hard Disk Drive



USB Flash Memory Disk



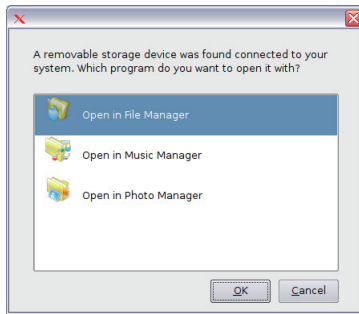


# Accessing your files

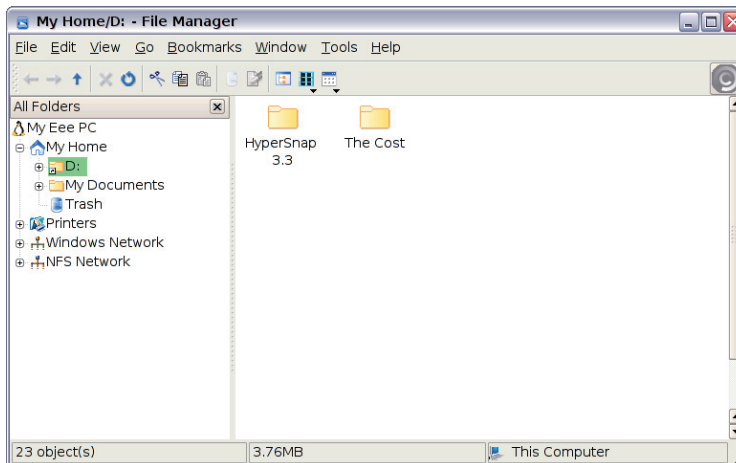
With external connection of USB devices, you can easily move files into and out of your Eee PC. Refer to the sub-sections below for more information.

## File Manager

1. Connect your USB flash memory disk or USB portable hard disk drive to your Eee PC.
2. Highlight and select **Open in File Manager** at the prompt.

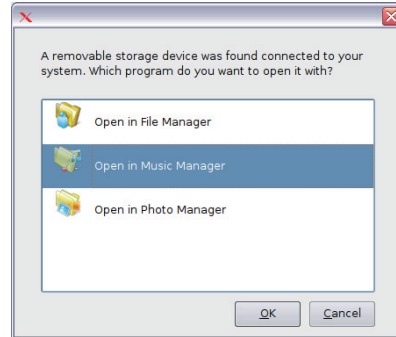


3. All the files and folders in your USB external storage device are shown in the right pane. Locate the desired file and double-click it to open.

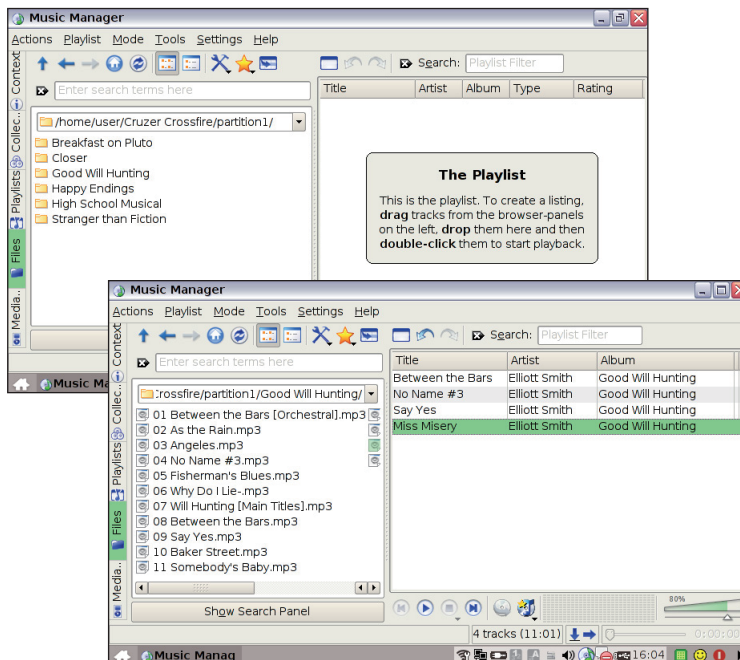


## Music Manager

1. Connect your USB flash memory disk or USB portable hard disk drive to your Eee PC with your music.
2. Highlight and select **Open in Music Manager** at the prompt.

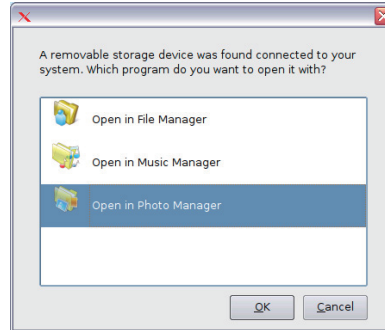


3. The **Music Manager** screen displays the album folders in your USB flash/hard disk drive. Select a folder and drag tracks to the right pane to create your own playlist.

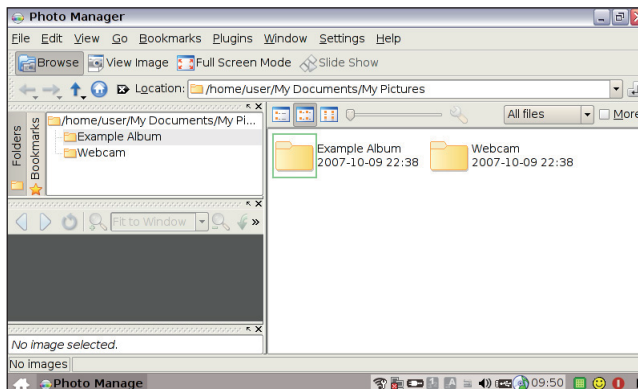


## Photo Manager

1. Connect your USB flash memory disk or USB portable hard disk drive to your Eee PC with your photos.
2. Highlight and select **Open in Photo Manager** at the prompt.



2. The **Photo Manager** displays the albums in your connected USB storage device. Select an photo in an album and the photos will be displayed in the bottom left preview window.

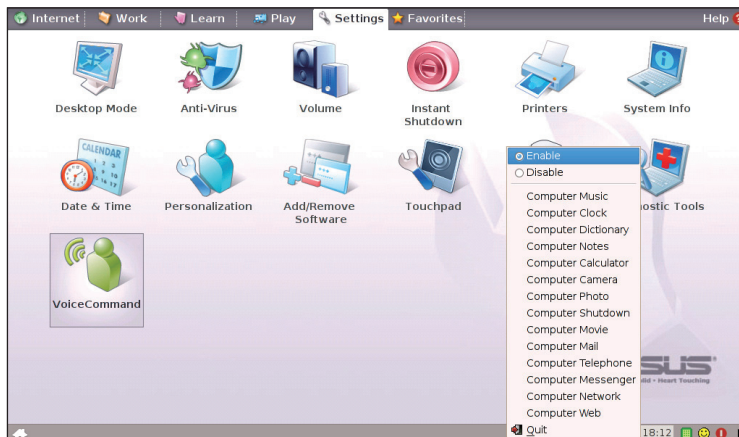


## Calling up applications

Operate your Eee PC hands-free. With voice command, you can launch Eee PC utilities without utilizing the keyboard. Just let your lips do the service.

Follow the instructions below to use voice command:

1. Double-click **VoiceCommand** from the **Settings** tab.
2. Right click the voice command icon in the Notification area and toggle **Enable** to activate this function.
3. The items on the list are available for voice command function. Add "computer" before each command.



An example of voice command use follows:



1. If you encounter new vocabulary, consult the dictionary in your Eee PC.
2. Activate the voice command function.
3. Speak out "computer-dictionary," and the built-in dictionary will be at your service.

# Terminating application processes

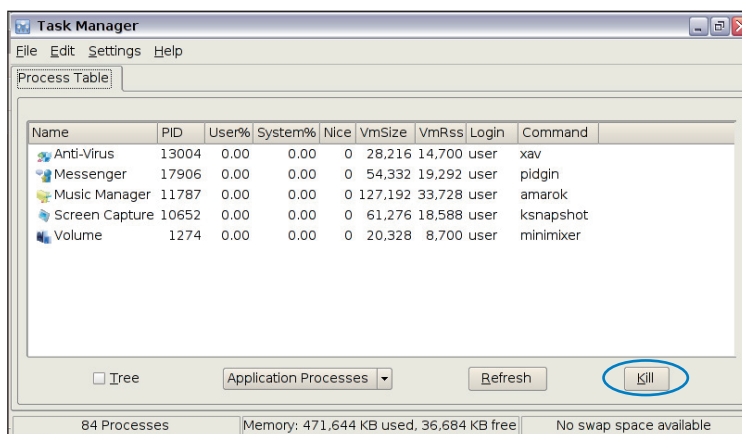
The Task Manager displays the application processes. Tweak your Eee PC up if it is running slow by killing the application with Task Manager.

Follow the instructions below to teminate applications:

1. Double click the SOS icon  in the Notification area to display the running applications.

Or, press  +  (<Fn> + <F6>) directly to launch Task Manager.

2. Select an unnecessary application that uses the system resources and click **Kill** to teminate the process.



Using Task Manager to terminate applications may cause damage to the files that the application is reading or editing. We do not recommend you use Task Manager to stop the applications that are working on your important data. Or, back up your important data before using Task Manager.

## How-To Tips

### How to extend battery life?

- Turn off Wifi: <Fn> + <F2>
- Dim the screen: <Fn> + <F3>
- Reduce speaker volume: <Fn> + <F8>
- Turn off the speaker: <Fn> + <F7>

### How to use SOS task manager?

1. Click the green icon on the taskbar, which is located at the bottom of the screen.
2. Click a column heading to sort the list, for example by memory used.
3. Select any application in the window to **Kill** or **Refresh**.
4. To view more, select another option from the drop-down list.

### How to install Windows® XP?

Refer to the User's Manual.

### How to connect to ASUS update server?

1. Connect to the Internet.
2. Click **Add/Remove Software** in the **Settings** tab.
3. After the databases loads, find any updates in the **Settings** tab.

### How to set up Wifi?

1. Press <Fn> + <F2> to turn on the Wifi.
2. Click the **Wireless Networks** icon in the Internet tab.
3. Click **Connect** to build the connection.

### How to set up ADSL?

1. Click the **Network** icon in the **Internet** tab.
2. Click the **Create** button. A wizard launches.
3. Select **DSL - Point-to-Point Over Ethernet**, and click **Next**.
4. Complete the wizard to configure a DSL connection.