

Procedures for changing the default location of program installation in Windows XP

Most windows programs are installed in Drive C: as the default setting. Follow this manual to modify the default location of program installation from Drive C: to Drive D: to reserve more space in Drive C: for important Windows system updates.

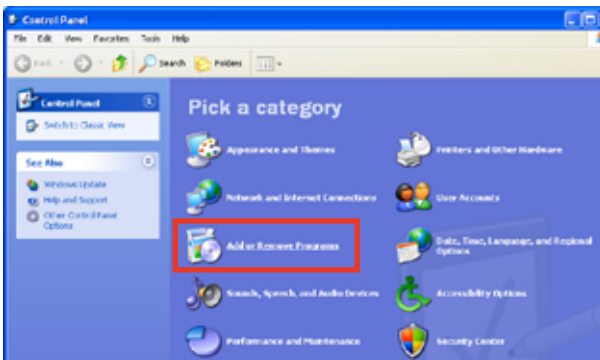


Prepare an external optical drive and the Eee PC support DVD for the following system restoration and driver and program installation.



All files in Drive C: and Drive D: will be erased after system restoration. We recommend that you make a backup of your important files before continuing to the following procedures.

1. Follow the instructions in your Eee PC user manual to restore you system to the factory setting using your Eee PC support DVD. Turn on your Eee PC, and then log in to the Windows environment.
2. Click **Start > Settings > Control Panel**, and the click **Add or Remove Programs**.



3. Follow the next instructions to uninstall all of these programs one by one.

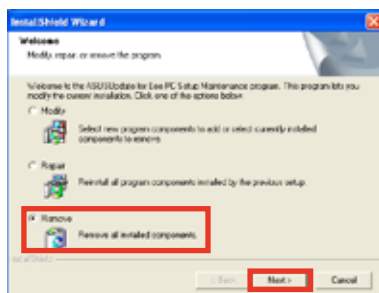
ASUS Update	Microsoft SQL Server 2005
ASUS OS Cleaner	Windows Live
Eee InstantKey	Bluetooth
Super Hybrid Engine	Realtek audio driver
NOD32 AntiVirus	ASUS ACPI driver
Eee Storage	Azurewave NE766 driver
eCap	

ASUS Update

- A. Click **Change/Remove**.



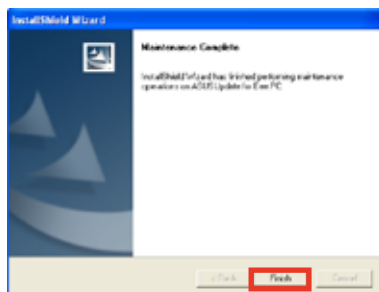
- B. Select **Remove**, and then click **Next**.



- C. Click **OK**.



- D. Click **Finish** after program uninstallation.

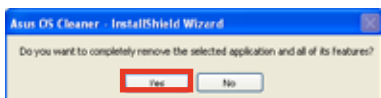


ASUS OS Cleaner

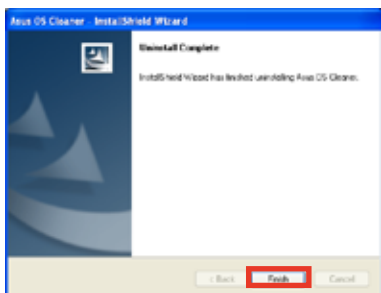
A. Click **Remove**.



B. Click **Yes**.



C. Click **Finish** after program uninstallation.

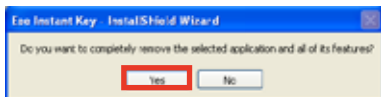


Eee Instant Key

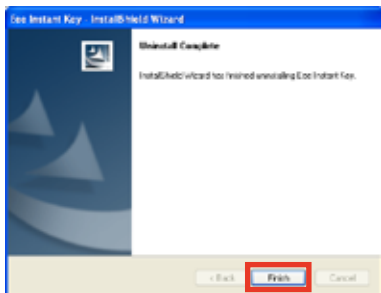
A. Click **Remove**.



B. Click **Yes**.



C. Click **Finish** after program uninstallation.

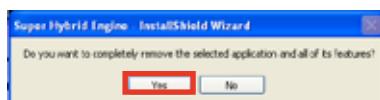


Super Hybrid Engine

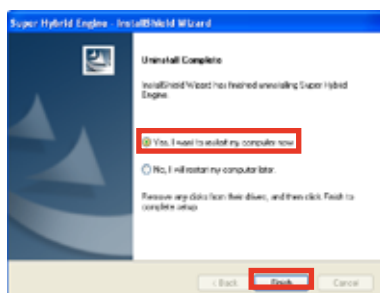
- A. Click **Remove**.



- B. Click **Yes**.



- C. Select **Yes, I want to restart my computer now** and then click **Finish** after program uninstallation.



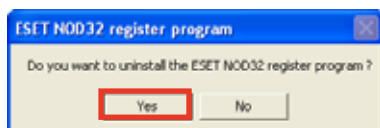
ESET NOD32 AntiVirus

Uninstall first the NOD32 register program, and then uninstall the NOD32 AntiVirus main program.

- A. Select ESET NOD32 register program. Click **Change/Remove**.



- B. Click **Yes**.



- C. Select ESET NOD32 Antivirus. Click **Remove**.



D. Click **Yes**.



E. Click **Yes** to restart the computer.

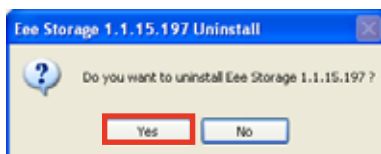


Eee Storage

A. Click **Change/Remove**.



B. Click **Yes**.

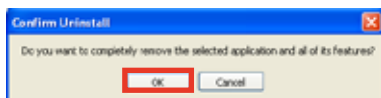


ECAP

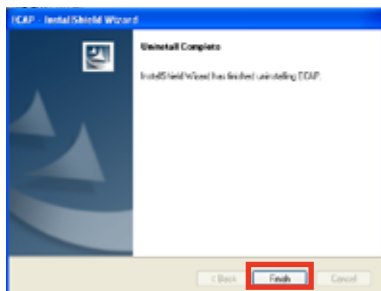
A. Click **Remove**.



B. Click **Yes**.



C. Click **Finish** after program uninstallation.



Microsoft SQL Server 2005

- A. Click **Remove**.



- B. Click **Yes**.



Windows Live installer

- A. Click **Remove**.



- B. Click **Yes**.



Windows Live Mail

- A. Click **Remove**.



- B. Click **Yes**.

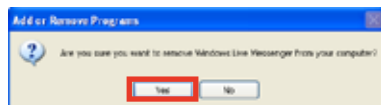


Windows Live Messenger

- A. Click **Remove**.



- B. Click **Yes**.



Windows Live Toolbar

A. Click **Remove**.



B. Click **Yes**.



Windows Live Writer

A. Click **Remove**.



B. Click **Yes**.

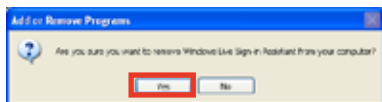


Windows Live Sign-in Assistant

A. Click **Remove**.



B. Click **Yes**.

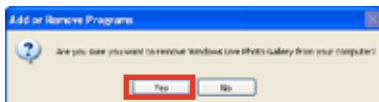


Windows Live Photo Gallery

A. Click **Remove**.



B. Click **Yes**.

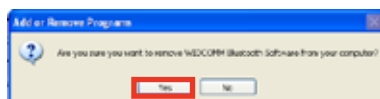


WIDCOMM Bluetooth Software

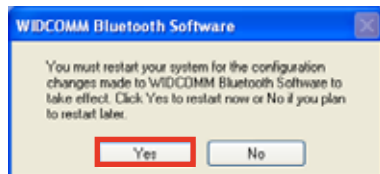
- A. Click **Remove**.



- B. Click **Yes**.



- C. Select **Yes** to restart the system after program uninstallation.



Realtek audio driver

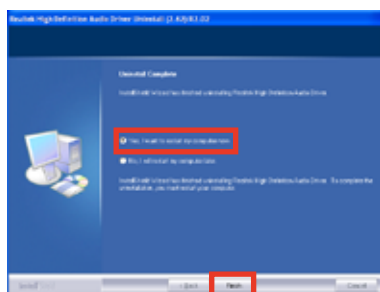
- A. Click **Remove**.



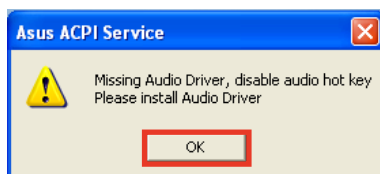
- B. Click **Yes**.



- C. Select **Yes, I want to restart my computer now** and then click **Finish** after program uninstallation.



- D. After Windows restarts, a warning message appears. This is normal because the audio driver is removed. Click **OK** to close the window.

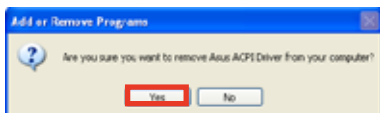


ASUS ACPI driver

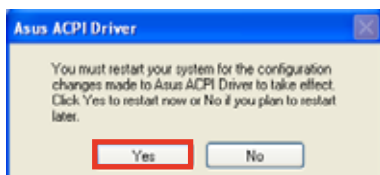
A. Click **Remove**.



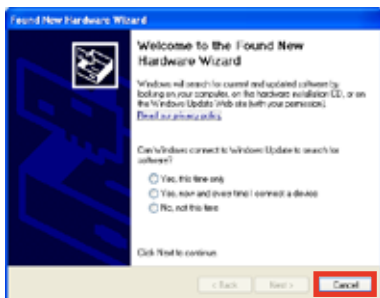
B. Click **Yes**.



C. Select **Yes** to restart the system after program uninstallation.



D. After Windows restarts, a Found New Hardware Wizard window appears. This is normal because the ACPI driver is removed. Click **Cancel** to close the wizard.

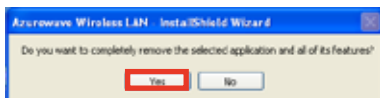


Azurewave Wireless LAN

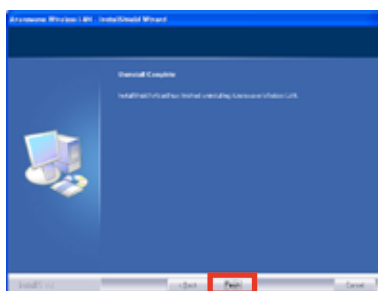
A. Click **Remove**.



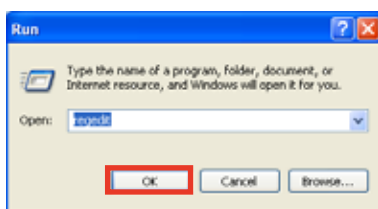
B. Click **Yes**.



- C. Click **Finish** after program uninstallation.



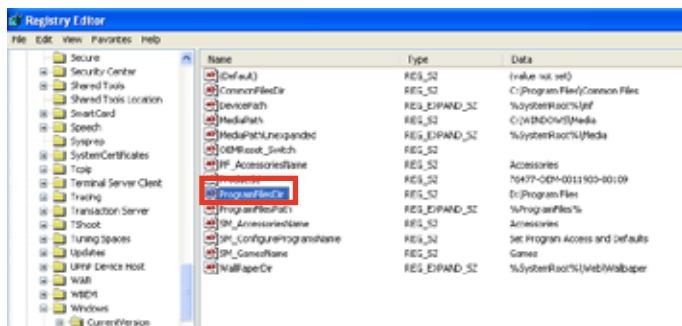
4. After removing all the previous programs, click **Start**, click **Run**, type **regedit** in the **Open** box, and then click **OK**.



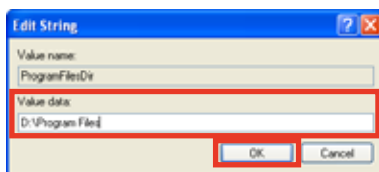
5. In the Registry Editor window, locate and then click the following registry subkey:

HKEY_LOCAL_MACHINE\SOFTWARE\Microsoft\Windows\CurrentVersion

In the details pane on the right of the Registry Editor window, double-click the **ProgramFilesDir** registry value.



6. In the **Edit String** window, type **D:\Program Files** in the **Value data** box. Click **OK**, and then exit Registry Editor.
7. **Restart your computer.**



8. Double-click **My Computer** on the desktop, double-click **Drive C:**, and then double-click **Program Files**. Cut and paste all folders to **D:\Program Files** EXCEPT the following folders:

Common Files

ezHelper

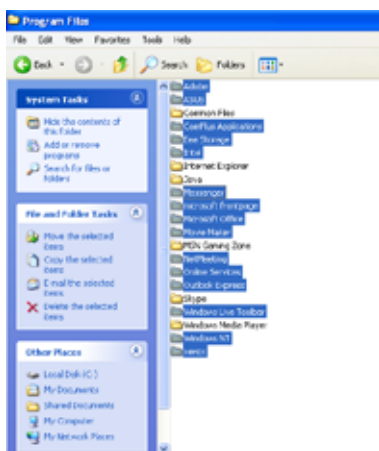
Internet Explorer

JAVA

MSN Gaming Zone

Skype

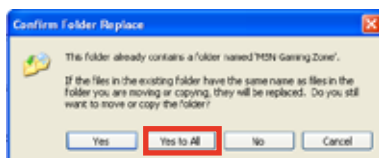
Windows Media Player



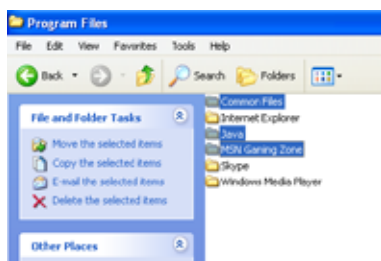
9. A system warning message appears for file moving confirmation. Click **Yes** to continue.



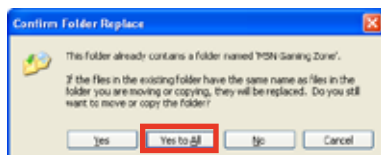
10. A **Confirm Folder Replace** window appears while moving the files. Click **Yes to All** to continue.



12. Copy the **Common Files**, **JAVA** and **MSN Gaming Zone** folders from C:\Program Files to D:\Program Files.



13. A **Confirm Folder Replace** window appears while moving the files. Click **Yes to All** to continue.



14. Install the previously removed drivers and programs using the Eee PC support DVD.



Remember to install **ASUS ACPI Driver and Utility** BEFORE installing Eee Instant Key and Super Hybrid Engine.



15. Download and install **Microsoft SQL Server 2005 Compact Edition** and **Microsoft PowerPoint Viewer 2007** from the following websites:

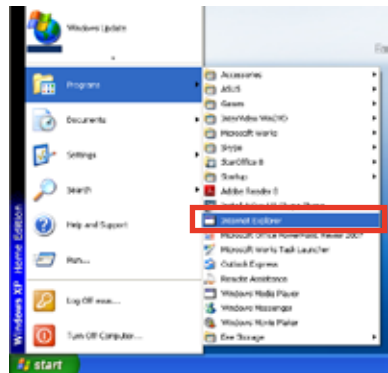
Microsoft SQL Server 2005 Compact Edition:

<http://www.microsoft.com/downloads/details.aspx?FamilyID=85e0c3ce-3fa1-453a-8ce9-af6ca20946c3&DisplayLang=en>

Microsoft PowerPoint Viewer 2007:

<http://www.microsoft.com/downloads/details.aspx?displaylang=en&FamilyID=048dc840-14e1-467d-8dca-19d2a8fd7485>

16. It is possible for you to see missing program icons. Simply run the program, and the program icon will be restored automatically.



Before you finish installing all hardware drivers, you may see error messages while launching MSN 4.0 and Movie Maker. Simply install the audio driver for all programs to run normally.

