

ASUS TUF Gaming A15 (FA507X) series

Service Guide

COPYRIGHT INFORMATION

No part of this manual, including the products and software described in it, may be reproduced, transmitted, transcribed, stored in a retrieval system, or translated into any language in any form or by any means, except documentation kept by the purchaser for backup purposes, without the express written permission of ASUSTeK COMPUTER INC. (“ASUS”).

ASUS PROVIDES THIS MANUAL “AS IS” WITHOUT WARRANTY OF ANY KIND, EITHER EXPRESS OR IMPLIED, INCLUDING BUT NOT LIMITED TO THE IMPLIED WARRANTIES OR CONDITIONS OF MERCHANTABILITY OR FITNESS FOR A PARTICULAR PURPOSE. IN NO EVENT SHALL ASUS, ITS DIRECTORS, OFFICERS, EMPLOYEES OR AGENTS BE LIABLE FOR ANY INDIRECT, SPECIAL, INCIDENTAL, OR CONSEQUENTIAL DAMAGES (INCLUDING DAMAGES FOR LOSS OF PROFITS, LOSS OF BUSINESS, LOSS OF USE OR DATA, INTERRUPTION OF BUSINESS AND THE LIKE), EVEN IF ASUS HAS BEEN ADVISED OF THE POSSIBILITY OF SUCH DAMAGES ARISING FROM ANY DEFECT OR ERROR IN THIS MANUAL OR PRODUCT.

Products and corporate names appearing in this manual may or may not be registered trademarks or copyrights of their respective companies, and are used only for identification or explanation and to the owners’ benefit, without intent to infringe.

SPECIFICATIONS AND INFORMATION CONTAINED IN THIS MANUAL ARE FURNISHED FOR INFORMATIONAL USE ONLY, AND ARE SUBJECT TO CHANGE AT ANY TIME WITHOUT NOTICE, AND SHOULD NOT BE CONSTRUED AS A COMMITMENT BY ASUS. ASUS ASSUMES NO RESPONSIBILITY OR LIABILITY FOR ANY ERRORS OR INACCURACIES THAT MAY APPEAR IN THIS MANUAL, INCLUDING THE PRODUCTS AND SOFTWARE DESCRIBED IN IT.

Copyright © 2024 ASUSTeK COMPUTER INC. All Rights Reserved.

LIMITATION OF LIABILITY

Circumstances may arise where because of a default on ASUS’ part or other liability, you are entitled to recover damages from ASUS. In each such instance, regardless of the basis on which you are entitled to claim damages from ASUS, ASUS is liable for no more than damages for bodily injury (including death) and damage to real property and tangible personal property; or any other actual and direct damages resulted from omission or failure of performing legal duties under this Warranty Statement, up to the listed contract price of each product.

ASUS will only be responsible for or indemnify you for loss, damages or claims based in contract, tort or infringement under this Warranty Statement.

This limit also applies to ASUS’ suppliers and its reseller. It is the maximum for which ASUS, its suppliers, and your reseller are collectively responsible.

UNDER NO CIRCUMSTANCES IS ASUS LIABLE FOR ANY OF THE FOLLOWING: (1) THIRD-PARTY CLAIMS AGAINST YOU FOR DAMAGES; (2) LOSS OF, OR DAMAGE TO, YOUR RECORDS OR DATA; OR (3) SPECIAL, INCIDENTAL, OR INDIRECT DAMAGES OR FOR ANY ECONOMIC CONSEQUENTIAL DAMAGES (INCLUDING LOST PROFITS OR SAVINGS), EVEN IF ASUS, ITS SUPPLIERS OR YOUR RESELLER IS INFORMED OF THEIR POSSIBILITY.

Disclaimer

ASUS is not responsible for direct, indirect, intentional or unintentional damages resulting from improper installation and operation.

Safety precautions

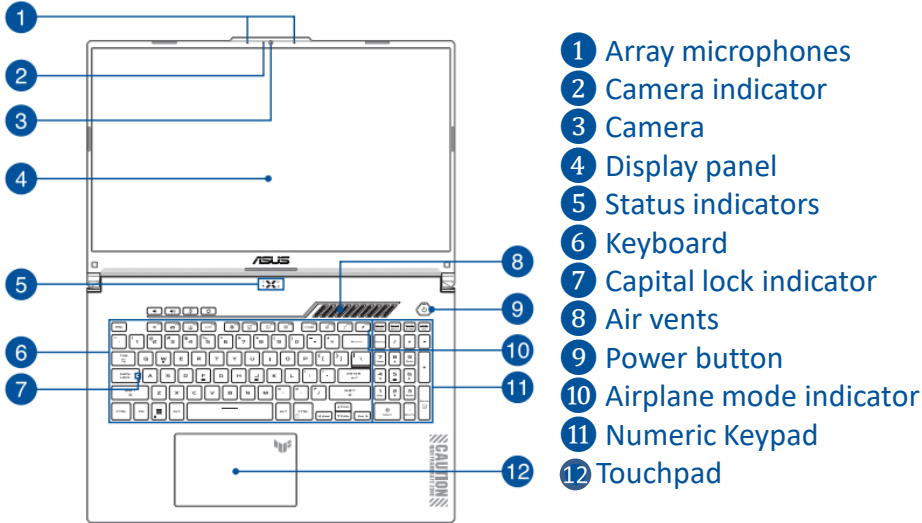
- Keep liquids or moisture away from your Notebook PC before installing or removing any components.
- Ensure to place your Notebook PC on a stable surface before installing or removing any components.
- Detach the clip or flap before removing the signal cables to prevent damage.
- Disconnect the power plug by pulling the plug evenly to avoid damage. Ensure to connect the signal cables in the correct orientation.
- Disconnect all power cables and remove the battery pack (if applicable) before cleaning your Notebook PC with liquid detergent to avoid risk of electric shock.
- Disconnect all power cables and remove the battery pack (if applicable) before installing or removing any components. Ensure to read and follow the instructions in the manual.
- Before handling components, use a grounded wrist strap or touch a safely grounded object to avoid damaging them due to static electricity.
- Keep liquids or moisture away from your Notebook PC to avoid short circuits.
- Hold components by the edges to avoid touching the ICs.
- Ensure to properly install all the components before connecting the AC power.
- Do not use power adapters or batteries from other devices to reduce the risk of injury to persons due to fire or explosion. Use only certified power adapters or batteries supplied by the manufacturer or authorized retailers.
- Ensure to install the correct screw models on your Notebook PC to prevent damage.

- [Service Overview](#)
- [ASUS TUF Gaming A15 \(FA507X\) Series Overview](#)
- [Components Top View](#)
- [Components Bottom View](#)
- [Repair Overview](#)
- [Appropriate Tools](#)
- [Key Parts and Related Parts](#)
- Disassembly steps :
 - [BASE CASE](#)
 - [DISSCONNECT BATTERY](#)
 - [SSD](#)
 - [DDR](#)
 - [BATTERY](#)
 - [USB BD](#)
 - [WIFI CARD](#)
 - [FAN \(with THERMAL MODULE and MAIN BOARD\)](#)
 - [THERMAL MODULE](#)
 - [MAIN BOARD](#)
 - [LED BD](#)
 - [TOUCHPAD MODULE](#)
 - [SPEAKER](#)
 - [KEYBOARD MODULE](#)
 - [LCD BEZEL](#)
 - [LCD PANEL](#)
 - [LCD COVER](#)

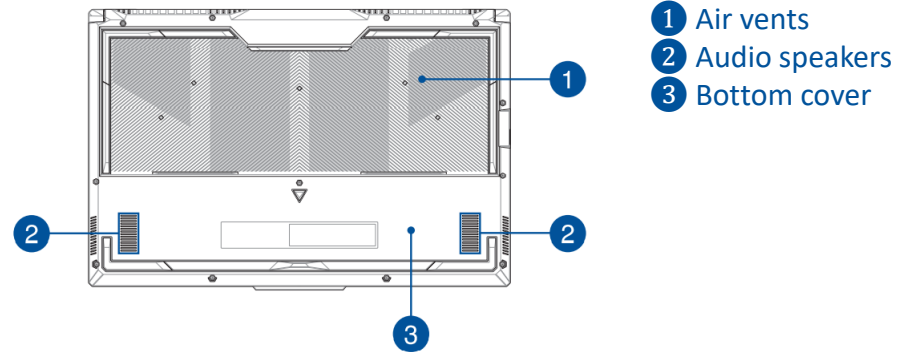
- **Carefully read through this Service Guide for a look at various components of the device before performing any service and repairs.**
- To provide the best service, we have provided the below information for technicians from distributors and resellers to perform the complete device disassembly and assembly. Before performing the procedures, please be sure to read through the overview in this service guide for component overview to avoid any unwarranted damages to the device hardware.
- The following contents include all part numbers mentioned in the service guide are **used for reference only**, if you need the exact part number for ordering, please refer to the OrderBook.
- Due to sales policy difference, the components might have different specifications on the same series product, please refer to E-manual by model.

Due to sales policy difference, the components may have different specifications on the same model. If you have any operational issues, please contact the service hotline.

Top View



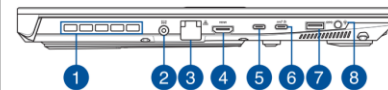
Bottom View



Right View



Left View



- 1 Air vents(on selected models)
- 2 Power(DC) input port
- 3 LAN port
- 4 HDMI output port
- 5 Thunderbolt™ 4 port

- 6 USB 3.2 Gen 2 Type-C®/DisplayPort/Power Delivery combo port



The "UP" mark on the TYPE-C debug cable must be inserted facing upwards.

- 7 USB 3.2 Gen 1 port
- 8 Headphone/Headset/Microphone jack

◆ LCD COVER



◆ LCD BEZEL



◆ 15.6" LCD PANEL



◆ KEYBOARD MODULE



◆ BASE CASE



◆ BATTERY



◆ MB RAM ABSORBER



◆ DDR4 / DDR5



◆ SSD



◆ SSD ABSORBER



◆ SSD AL FOIL



◆ BATTERY CABLE



◆ SPEAKER



◆ LED BD



◆ LED BD FFC



◆ USB FFC



◆ WIFI CARD



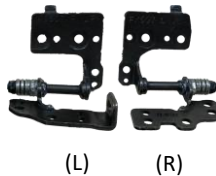
◆ GPU FAN ◆ CPU FAN



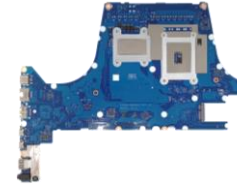
◆ THERMAL MODUL (56Wh)



◆ HINGE L / R



◆ MAIN BOARD



◆ USB BD



◆ DDR AL FOIL MYLAR



◆ ◆ THERMAL MODUL (90Wh)



◆ BEZEL COSMETIC MYLAR



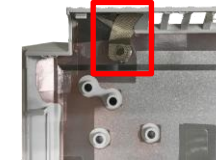
◆ TOUCHPAD MODULE



◆ TP FFC



◆ ESD AIR DISCHARGE GASKET



◆ CAMERA



◆ EDP CABLE



Components Bottom View

◆ LCD COVER



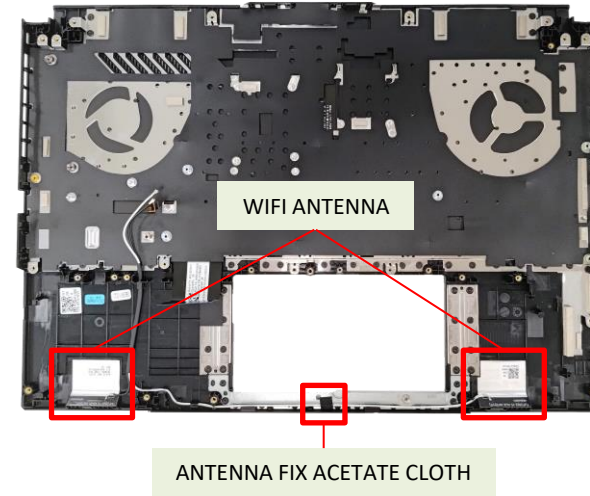
◆ THERMAL MODULE (90Wh)



◆ DDR AL FOIL MYLAR



◆ KEYBOARD MODULE



◆ LCD BEZEL



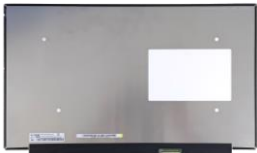
◆ THERMAL MODULE (56Wh)



◆ TOUCHPAD MODULE



◆ 15.6' LCD PANEL



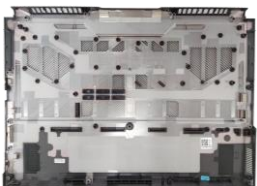
◆ USB BD



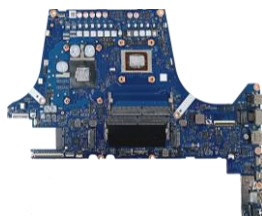
◆ LED BD



◆ BASE CASE



◆ MAIN BOARD



This chapter describes disassembly and assembly (Assemble document please look up from the last page), please follow the information provided in this section to perform the complete disassembly procedure.

◆ Precautions:

Before you perform any service or repair on the notebook, please pay special attention to the cautions prevent any damages to the notebook.

1. Be sure that the notebook is powered down.
2. Before disassembling any part, please disconnect all power source. ex: AC plug/Battery connector/Power protect screw etc.

3. Remove all rings, watches and any other metal objects from your hands.



4. Always wear a ground strap on your hand to protect the notebook from static discharge.
5. Please refer to “ANSI ESD S20.20” about ESD protection measure.
6. Put the disassembled parts in the functional PE BAG to avoid any damages of the A/B/C/D part.



7. The maintenance environment temperature is 20-30 °C and humidity is 40% - 70%.
8. To avoid scratching on the surface of machine; please use anti-static and soft materials to put on desk in repair environment as below photo.



9. Screw Appearance Criteria:

If the screws have the following damaged appearance, please do not use.

- a. Shape deformed.
- b. Damaged head – unable to drive in or the stripped screw.
- c. Damaged unable to securely tighten.
- d. Paint scratched off.
- e. Rusty



10. The following chapter includes all part numbers mentioned in service guide are used for reference only, actual part name depends on different SKU, if you need the exact part number for ordering, please refer to the Orderbook.
11. Due to sales policy difference, the components may have different specifications on the same model. Please note that all pictures and components shown on Service Guide are for disassembly/assembly description purpose only, so please refer to the actual product for disassemble/assemble.

Please prepare and select the appropriate tools to disassemble/assemble for the ASUS TUF Gaming A15 (FA507X) series notebook.

◆ Screwdriver

Please accord to different screw specification to choose different screwdriver and head.



◆ Plastic Blade



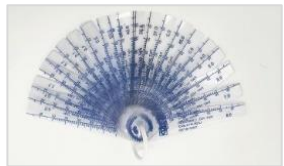
◆ Plastic Tweezers

Use a pair of tweezers to remove/insert/tidy up cables.



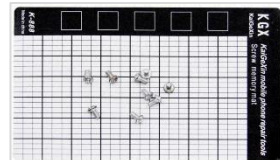
◆ Thickness Gauge

Thickness compass specification 0.05mm-1.5mm. Use it to measure the gap.



◆ Magnetism Board

Suggest local buy magnetism board to place screw, avoid mix different type screw to cause assembly damage.



◆ Alcohol 95



◆ Thermal Pad



◆ FCR-AS Thermal Grease



◆ Glove



◆ PLASTIC CARD T=0.35mm



◆ Dust-free Cloth



◆ PLASTIC PICK T=0.5mm



Disassembly Notice



The device has an Ambient Light Sensor (ALS) for power-off protection Function.

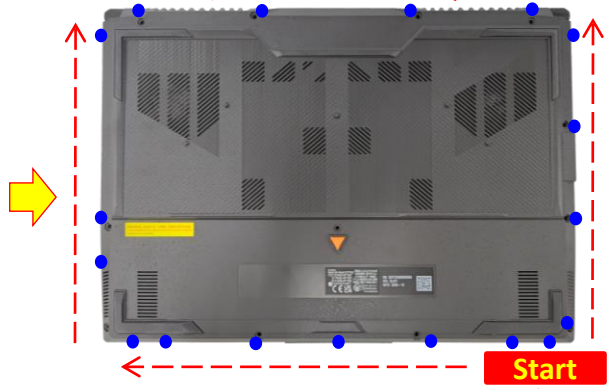
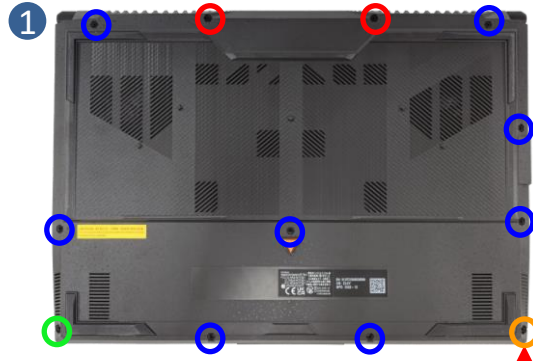
Step 1 : Remove the screws *11 pcs and *1pc in case.

Step 2 : Use the plastic blade to pry the base case.

Screws	QTY	Spec	Torque (kgf-cm)
	2	BK : M2.5*12L(4.5,0.8) (K) #1 WH : M2.5*12L(4.5,0.8)(K)#1	2.5±0.2
	8	BK : M2.5*9.5L(4.6,0.85) (K)#1 WH : M2.5*9.5L(4.5,0.8) (K)#1	2.5±0.2
	1	BK : M2.5*8L(K) #1 WH : M2.5*8.0L(4.5,0.8) (K)#1	2.5±0.2
	1	BK : M2.5*3L+5(4.5,0.9) (K)#1 WH : M2.5*3L+5(4.5,0.9) (K)#1	2.5±0.2

Ambient Light Sensor (ALS):

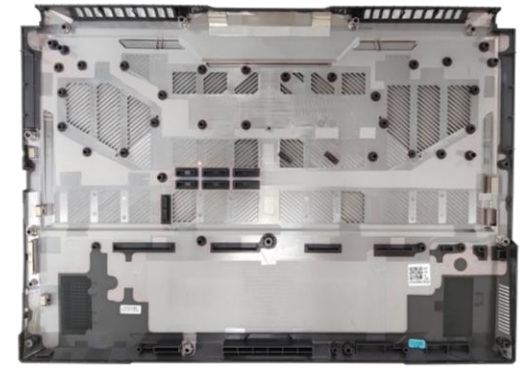
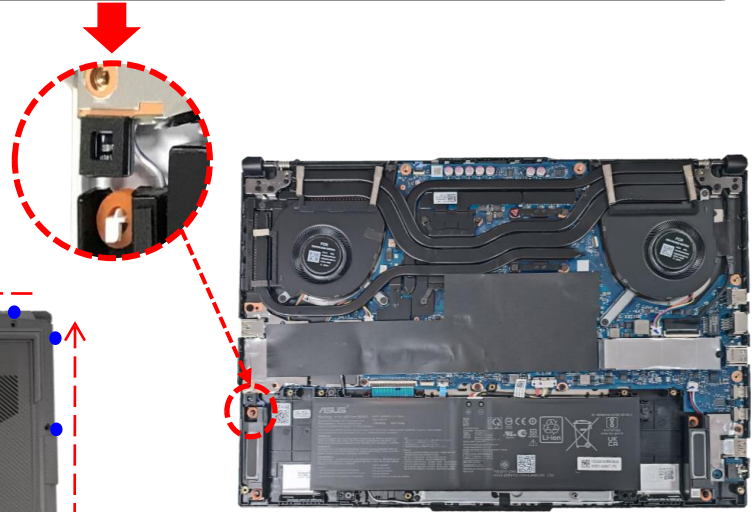
1. After removing the BOTTOM CASE, the ambient light sensor detects light, system will automatically power off for protection.
2. Make sure assemble bottom case back and plug in AC adapter, then you can power on normally.



⚠ The screw is unable to remove from bottom case, so please always loosen it last, and lock it first.

⚠ To avoid the bottom case hook, don't insert plastic blade in each red circle.

⚠ Please follow above arrow direction with using plastic blade to pry bottom case in each blue circle location. (To avoid the bottom case hook, please prying at each blue circle location.)



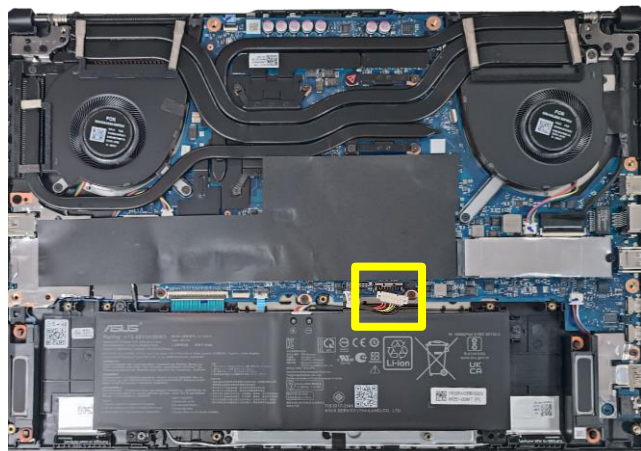
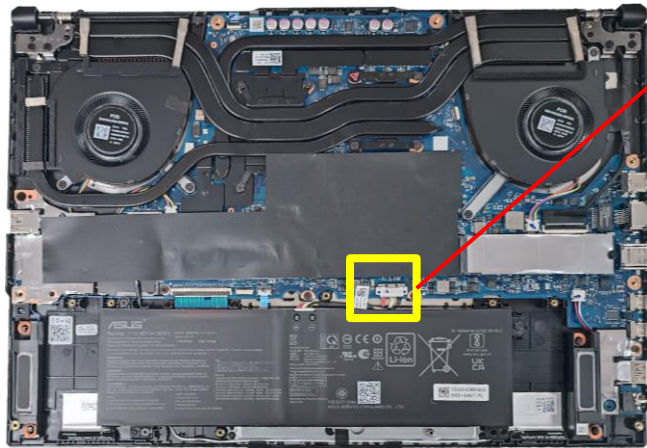
Disassembly Notice



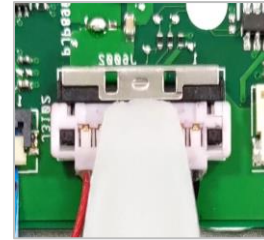
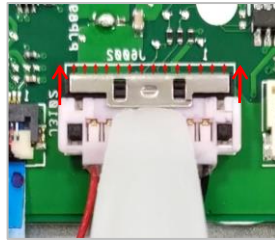
The device has an Ambient Light Sensor (ALS) for power-off protection Function.

Step 1 : Use the non-conductive pry tool to push iron sheet.

Step 2 : Use the non-conductive pry tool to disconnect battery connector.

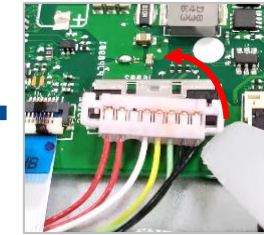
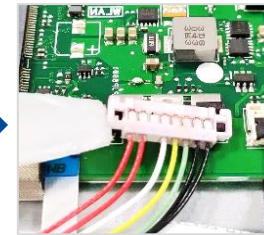
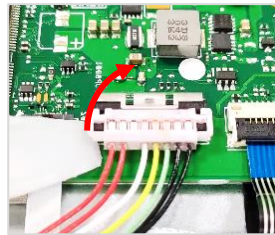


1



2

Please disconnect the red cable side first!



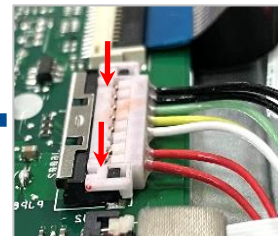
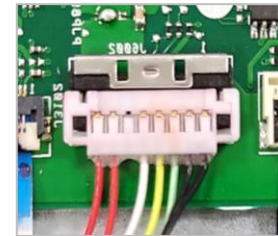
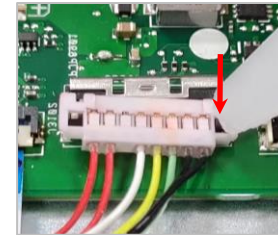
Assembly Notice

⚠ To prevent getting a short circuit or an electric shock accident, please follow the below steps to connect the battery connector.

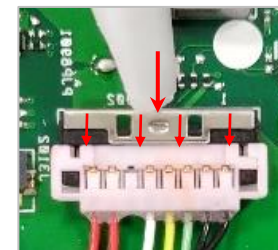
Step 1 : Use the non-conductive pry tool to connect the black cable side first, then connect the red cable side.

Step 2 : Use the non-conductive pry tool to push the iron sheet.

1



2



Disassembly Notice

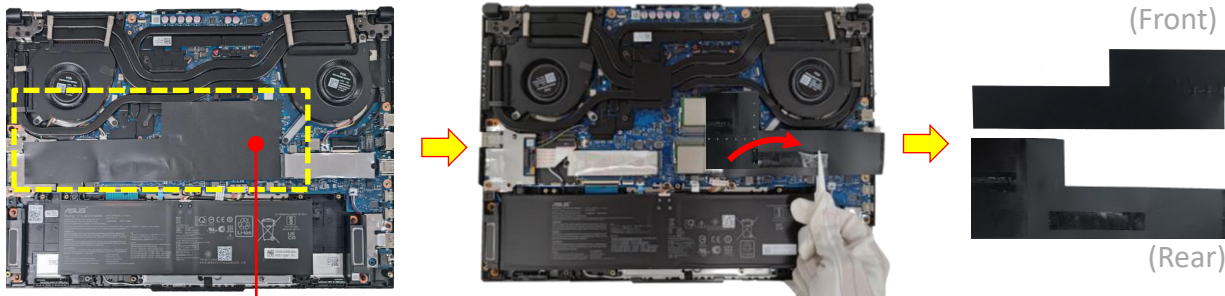


The device has an Ambient Light Sensor (ALS) for power-off protection Function.

- Step 1 : Tear off the (yellow mark) DIMM COVER MYLAR.
 - Step 2 : Remove the (red mark) screw and M.2 card (SSD).
 - Step 3 : Remove the AL FOIL and ABSORBER of the M.2 card (SSD).
 - Step 4 : Peel back the SSD LABEL from the ABSORBER carefully.
 - Step 5 : Paste the SSD LABEL on M.2 card (SSD).
- *Please keep these parts, they will be reused for new SSD installation.

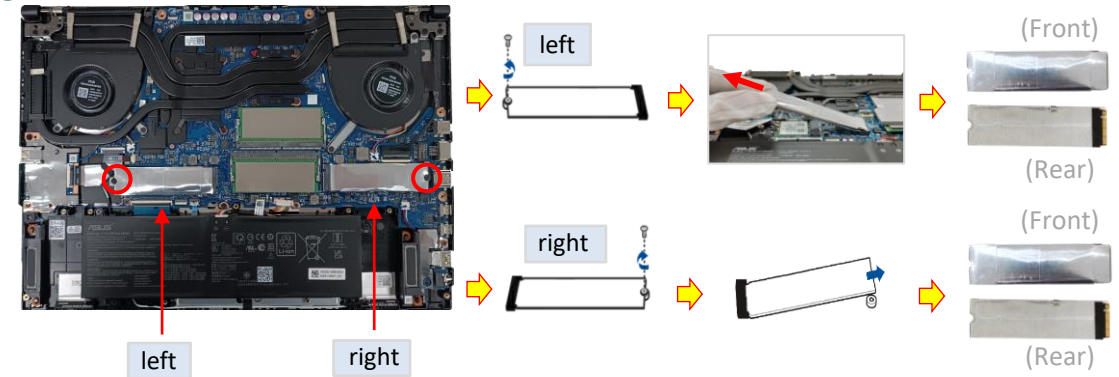
Screws	QTY	Spec	Torque (kgf-cm)
	2	M2*3L (5.6,0.8)(K)#1	1.5±0.2

1 Tear off



⚠ Be careful with top Mylar. The Wrong direction of tearing maybe cause damage.

2 Unscrew



3 Remove

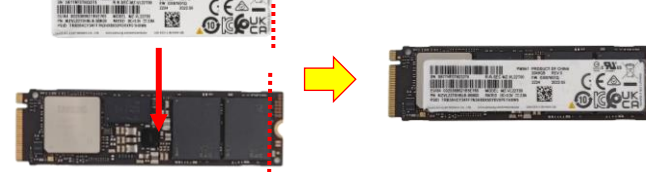


⚠ If the SSD label is torn off during disassembly, please see step 4-5 to paste it back on the SSD card to avoid the situation that it cannot be returned to the warehouse.

4



5



Assembly Notice

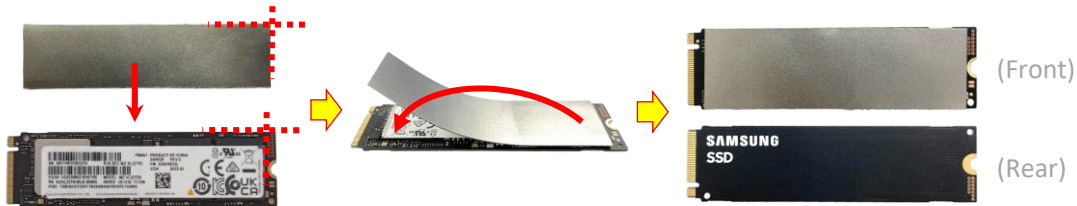


The device has an Ambient Light Sensor (ALS) for power-off protection Function.

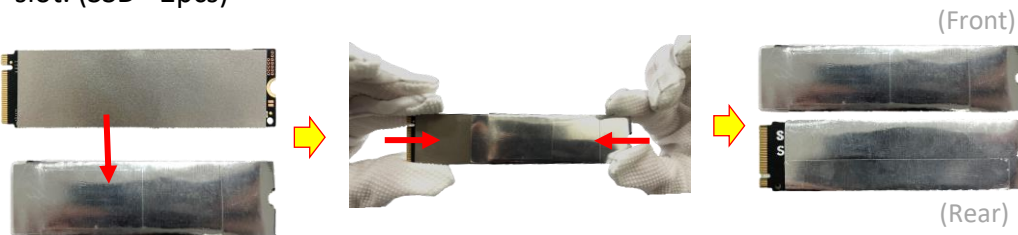
A Please use left- SSD slot as first priority.



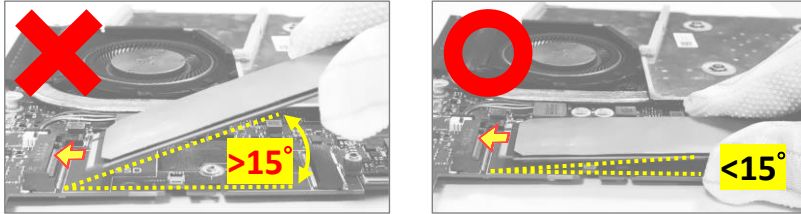
B Paste the ABSORBER on the new M.2 card (SSD *2pcs).



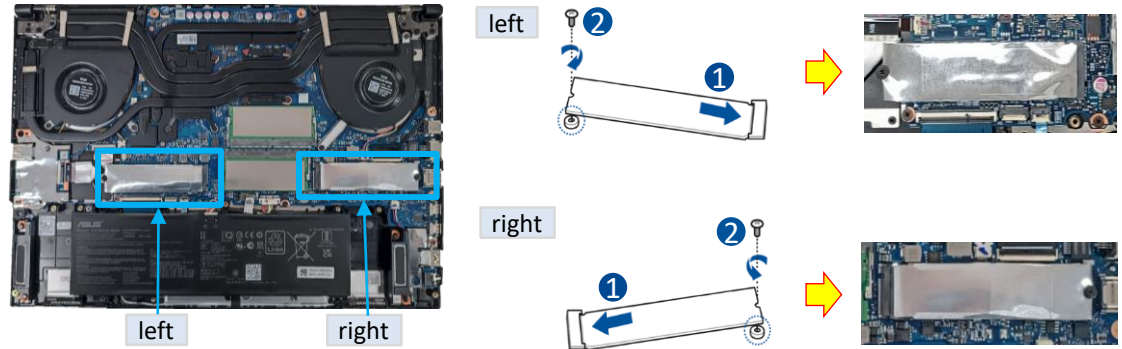
C Put the M.2 card (SSD) into the AL FOIL*1pc before inserting it into the SSD slot. (SSD *2pcs)



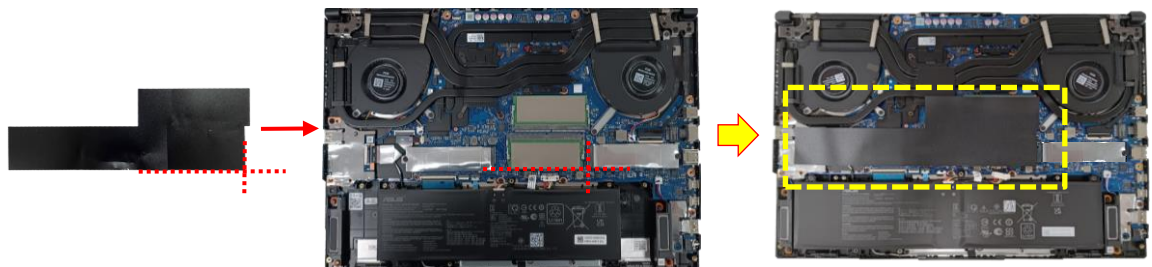
D When installing the SSD, please keep the SSD less than 15 degrees with motherboard, and then insert the SSD.



E Align and insert the SSD into the module slot, then secure the SSD in place by fastening screw.



F After installing the SSD, please paste the DIMM COVER MYLAR on below location. (yellow mark)



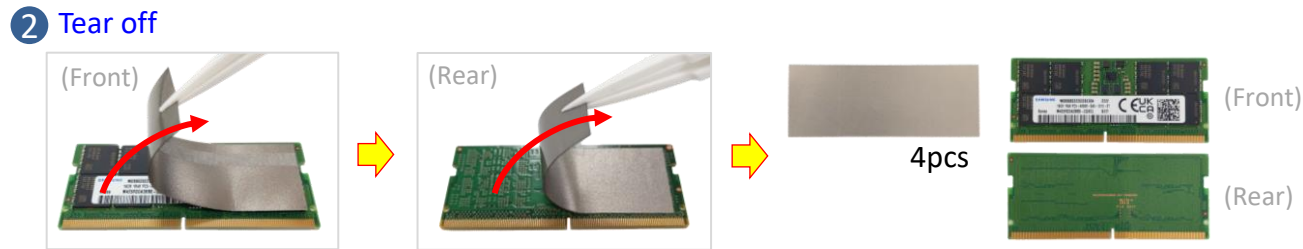
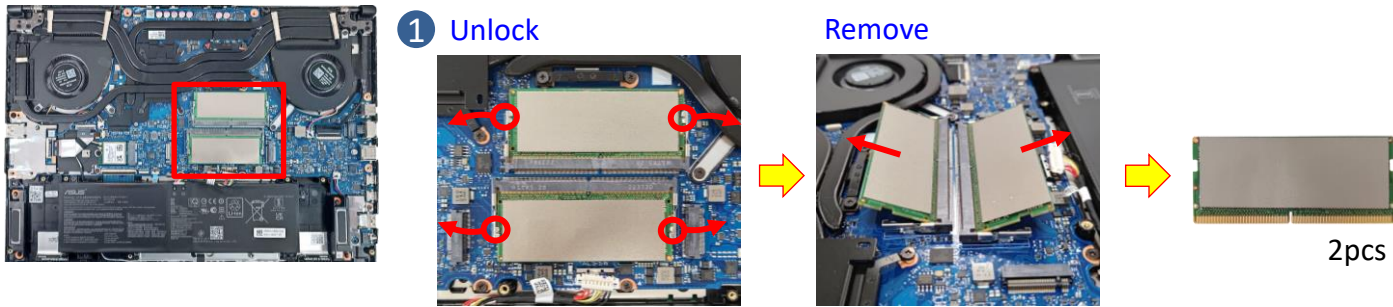
Disassembly Notice



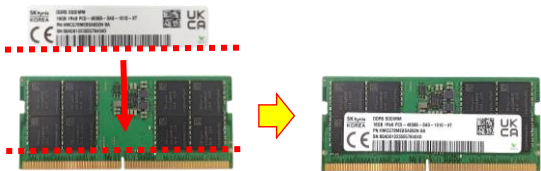
The device has an Ambient Light Sensor (ALS) for power-off protection Function.

Step 1 : Unlock and remove the RAM module *2pcs.

Step 2 : Tear off the two ABSORBERS from each of the front and back sides of the RAM.



! If the DDR label is torn off during the disassembling, please remember to paste it back on the DDR to avoid the situation that it cannot be returned to the warehouse.



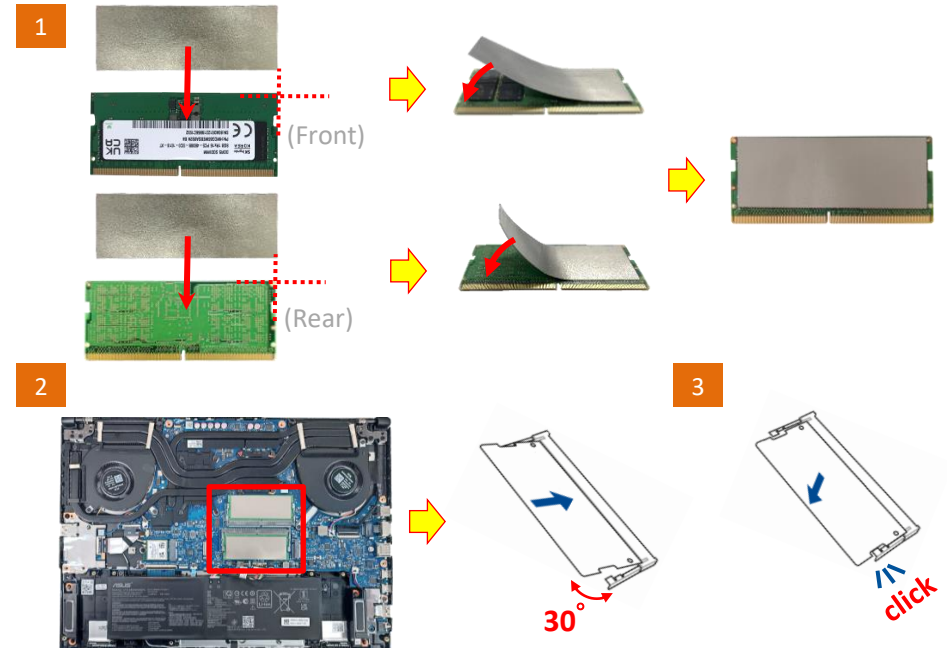
Assembly Notice

! Please paste ABSORBERS on the front and back sides of RAM before installing the Memory Module.

Step 1 : Paste the two ABSORBERS on the new RAM front and back side.

Step 2 : Align and insert the new RAM module at 30° into the memory slot.

Step 3 : Once properly inserted, push down the RAM module until it clicks in place.




Disassembly Notice



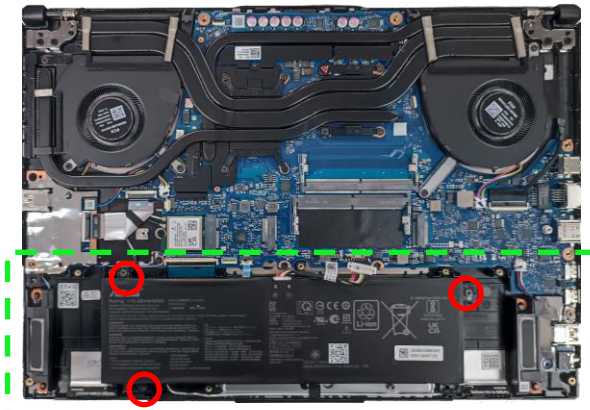
The device has an Ambient Light Sensor (ALS) for power-off protection Function.

Step 1 : Remove the screws*3pcs (red circles) from battery, then lift the BATTERY to remove it.

Step 2 : Remove the BATTERY CABLE from BATTERY.

Screws	QTY	Spec	Torque(kgf-cm)
T 	3	M2*4L(5,0.8) (K) #1	2.0±0.2

1 Remove the screws



56Wh



90Wh

2 Remove Battery cable



Disassembly Notice

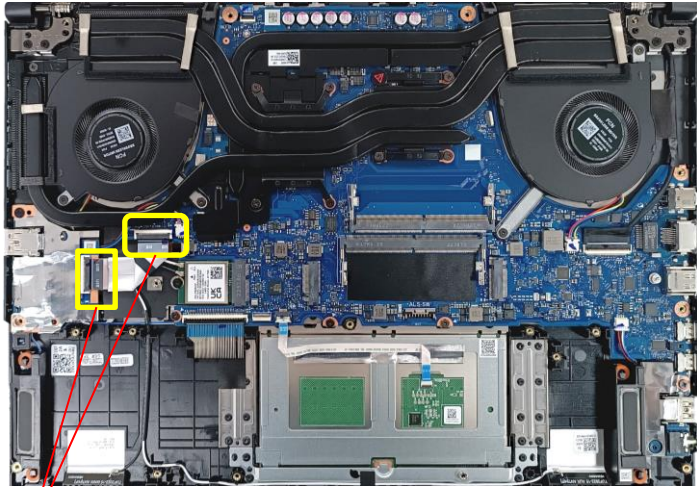


The device has an Ambient Light Sensor (ALS) for power-off protection Function.

Step 1 : Disconnect and remove the USB FFC (yellow mark).

Step 2 : Remove the screw*1pc and remove the USB BD.

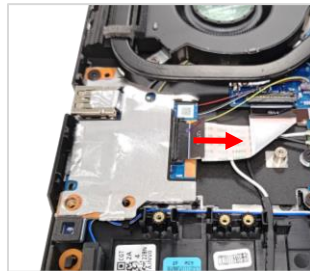
Screws	QTY	Spec	Torque (kgf-cm)
	1	M2*3L(5.6,0.8)(K)#1	2.0±0.2



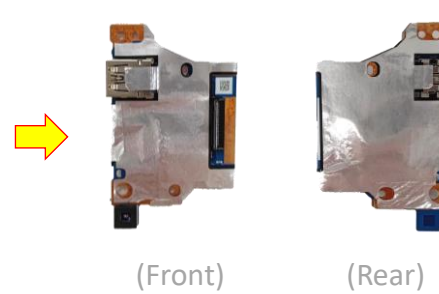
1 Disconnect



Remove



2 Remove



(Front)

(Rear)



Disassembly Notice

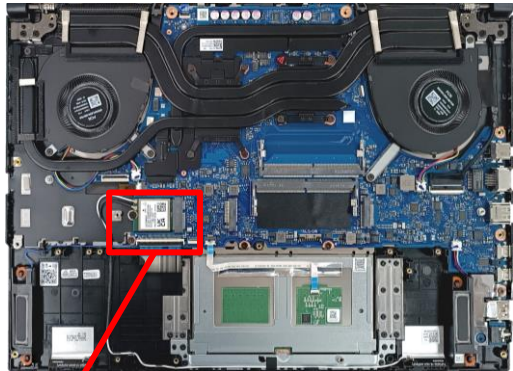


The device has an Ambient Light Sensor (ALS) for power-off protection Function.

Step 1 : Disconnect the RF CABLE connectors*2pcs(red Mark).

Step 2 : Remove the screw*1pc(blue circle).

Step 3 : Remove the WIFI CARD.



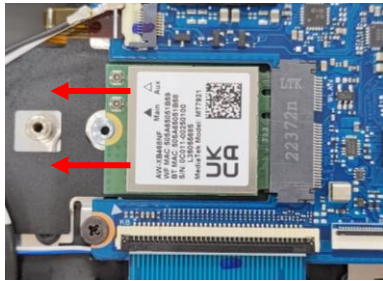
1 Disconnect



2 Remove



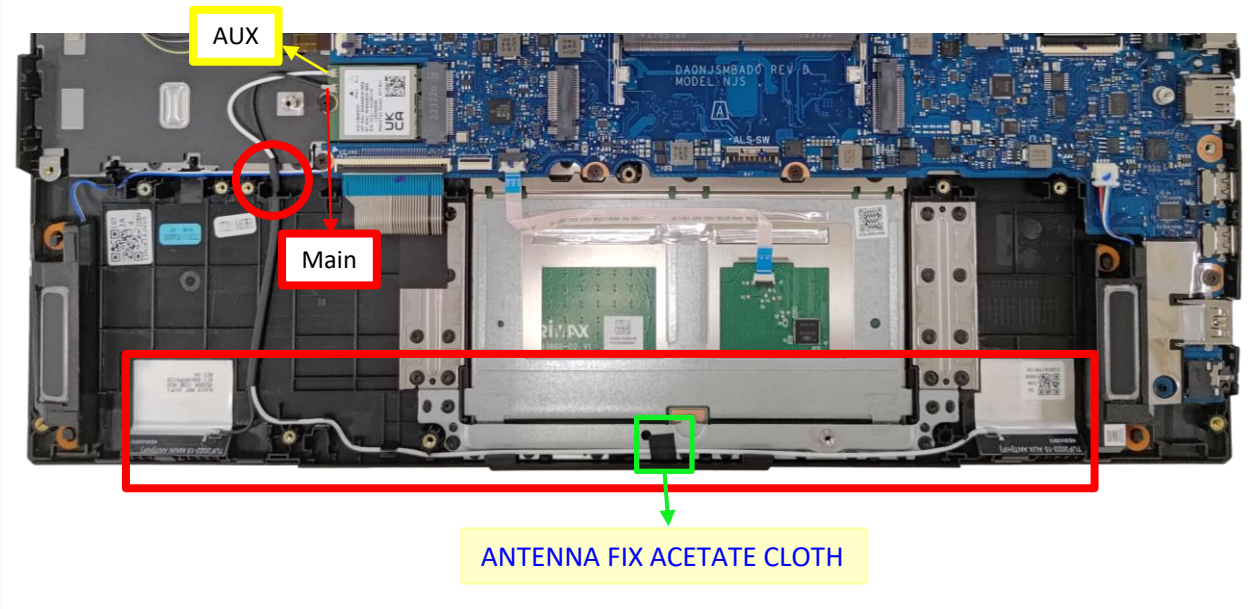
3 Remove



Screws	QTY	Spec	Torque (kgf-cm)
	1	M2*3L(5.6,0.8)(K)#1	2.0±0.2

Assembly Notice

⚠ Please according to below image to assemble and tidy up WIFI ANTENNA.




Disassembly Notice



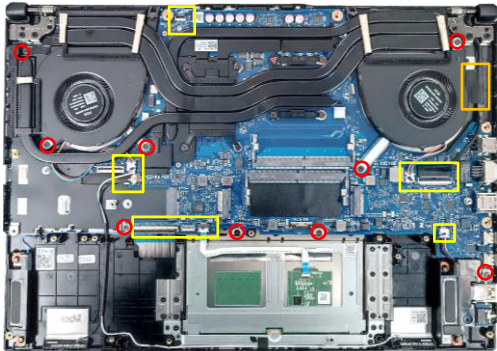
The device has an Ambient Light Sensor (ALS) for power-off protection Function.

- Step 1 : Disconnect the connectors*8pcs (yellow mark) and release EDP cable tape (orange mark).
- Step 2 : Remove the screws*9pcs (red mark).
- Step 3 : Remove the MB with Thermal and FAN module.
- Step 4 : Remove the FAN*2pcs.

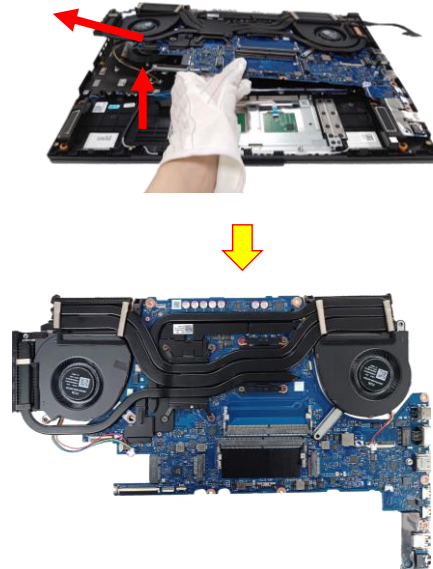
Screws	QTY	Spec	Torque (kgf-cm)
	9	M2*4L (5,0.8) (K) #1	2.0±0.2

1 Disconnect (Yellow mark) & Release (Orange mark)

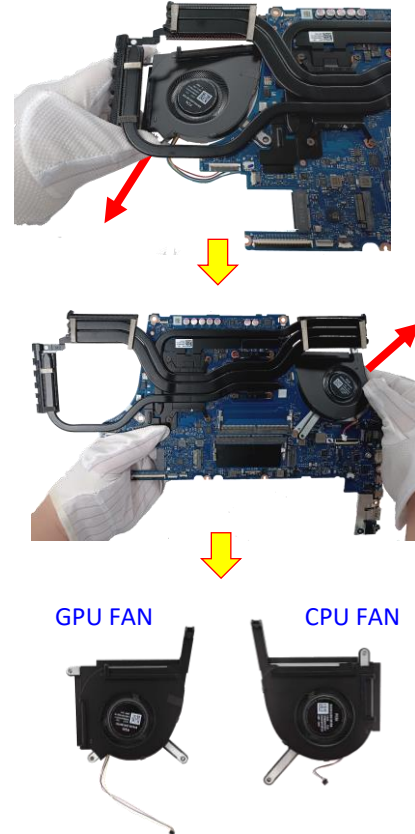
2 Remove (Red mark) screws



3 Remove module (MB+Thermal+FAN)

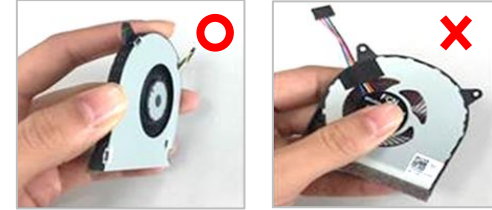


4 Remove FAN

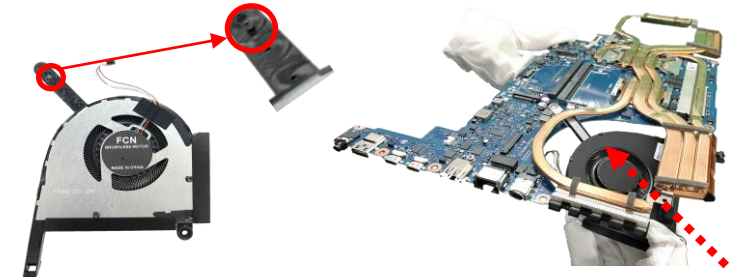


Assembly Notice

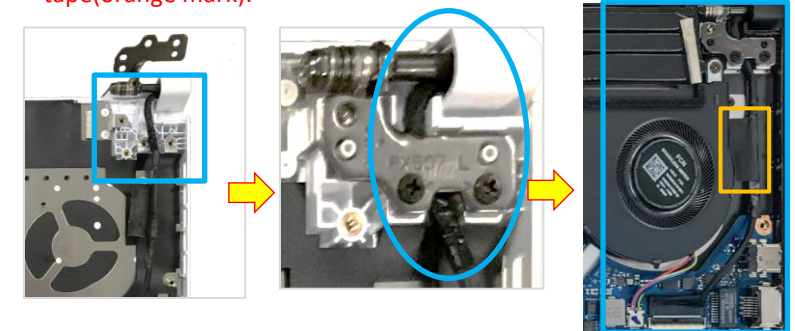
⚠ Please use the correct way to take fans off, avoiding getting out of shape.



⚠ There is positioning boss on the fan. When assembling the fan, insert the fan obliquely. After assembly, make sure that the positioning boss are fixed on the corresponding positioning holes.



⚠ Please follow the photos to tidy up the EDP cable, and paste the tape(orange mark).



Disassembly Notice

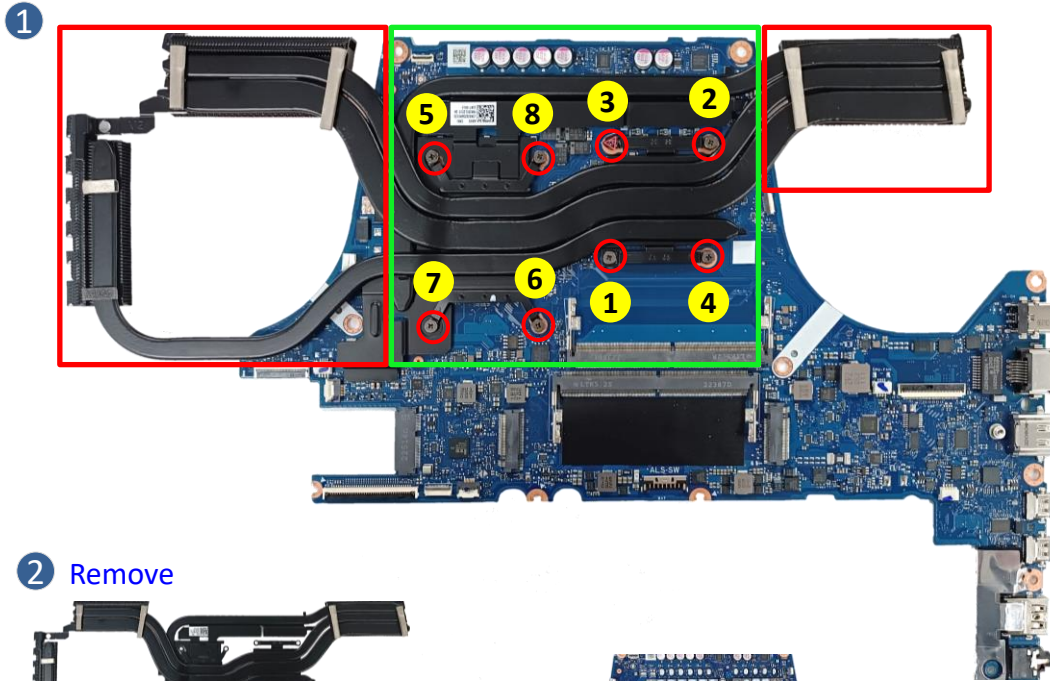


The device has an Ambient Light Sensor (ALS) for power-off protection Function.

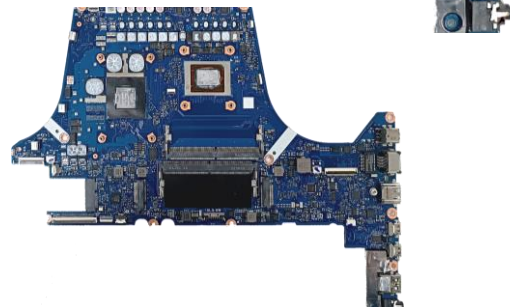
Step 1 : Please follow the reverse screws numbers to remove screws*8pcs.

Step 2 : Remove the THERMAL MODULE from MB.

⚠️ Recommend that the force point is at green block, and pull up thermal module to take it out. Do not pull up at red block and also notice the thermal pipe should not have deformation.



2 Remove



Screws	QTY	Spec	Torque (kgf-cm)
	8	M2*4L (5,0.8) (K) #1	2.0±0.2

Assembly Notice



Step-1

- THERMAL MODULE Location:[VRAM/CHOKE/MOS]
Material: FCR-AS Grease

- MB Location:[GPU/CPU]
Material: TH PAD PTM7958)

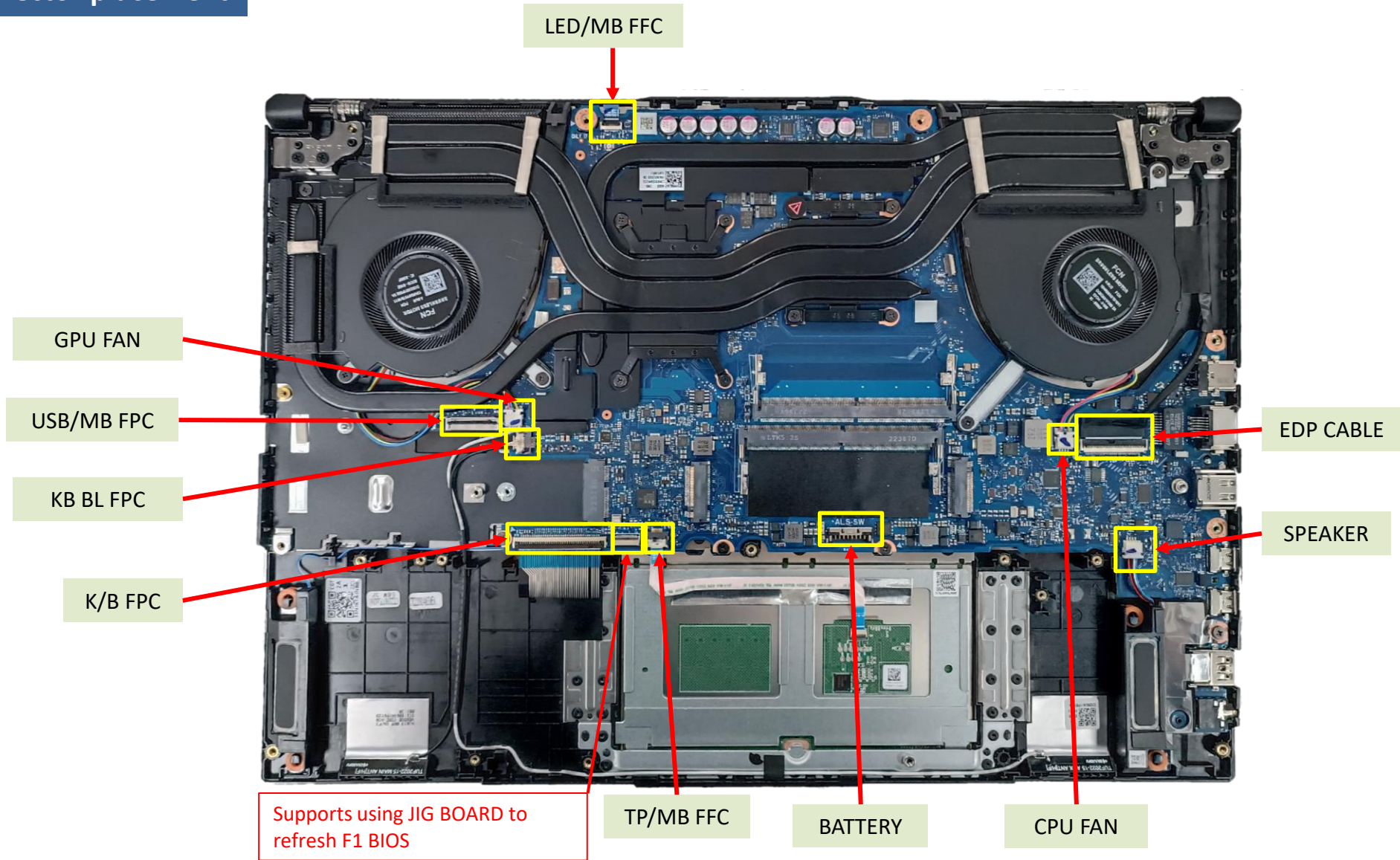
Step-2

Please follow the screws numbers to lock screws *8pcs.

IMPORTANT! Thermal paste, thermal pads, liquid metal, or other thermal interface materials must be thoroughly removed and replaced if this component is removed. Ensure that replacement materials are available before proceeding, or contact an authorized service center for assistance.

WARNING! The heat sink contains liquid metal and should only be removed by authorized service personnel. Significant damage may occur to motherboard components if the heat sink is improperly removed.

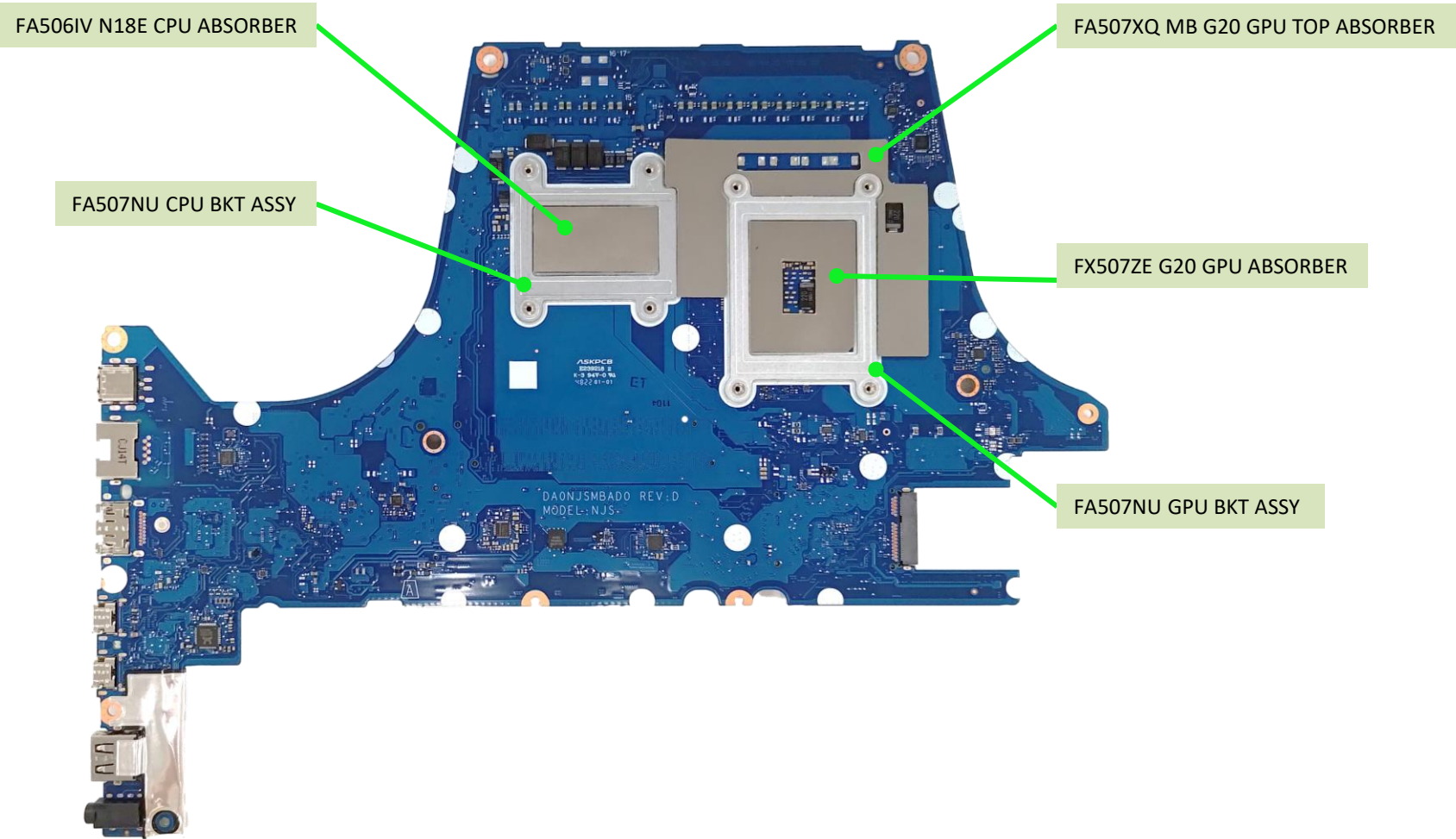
Mainboard connector placement



Materials on mainboard

TOP SIDE

⚠ Parts marked in yellow can be ordered/replaced separately at L2 repair level. When L3/L4 repair finished, no need to paste new one if shortage of this material on the MB.

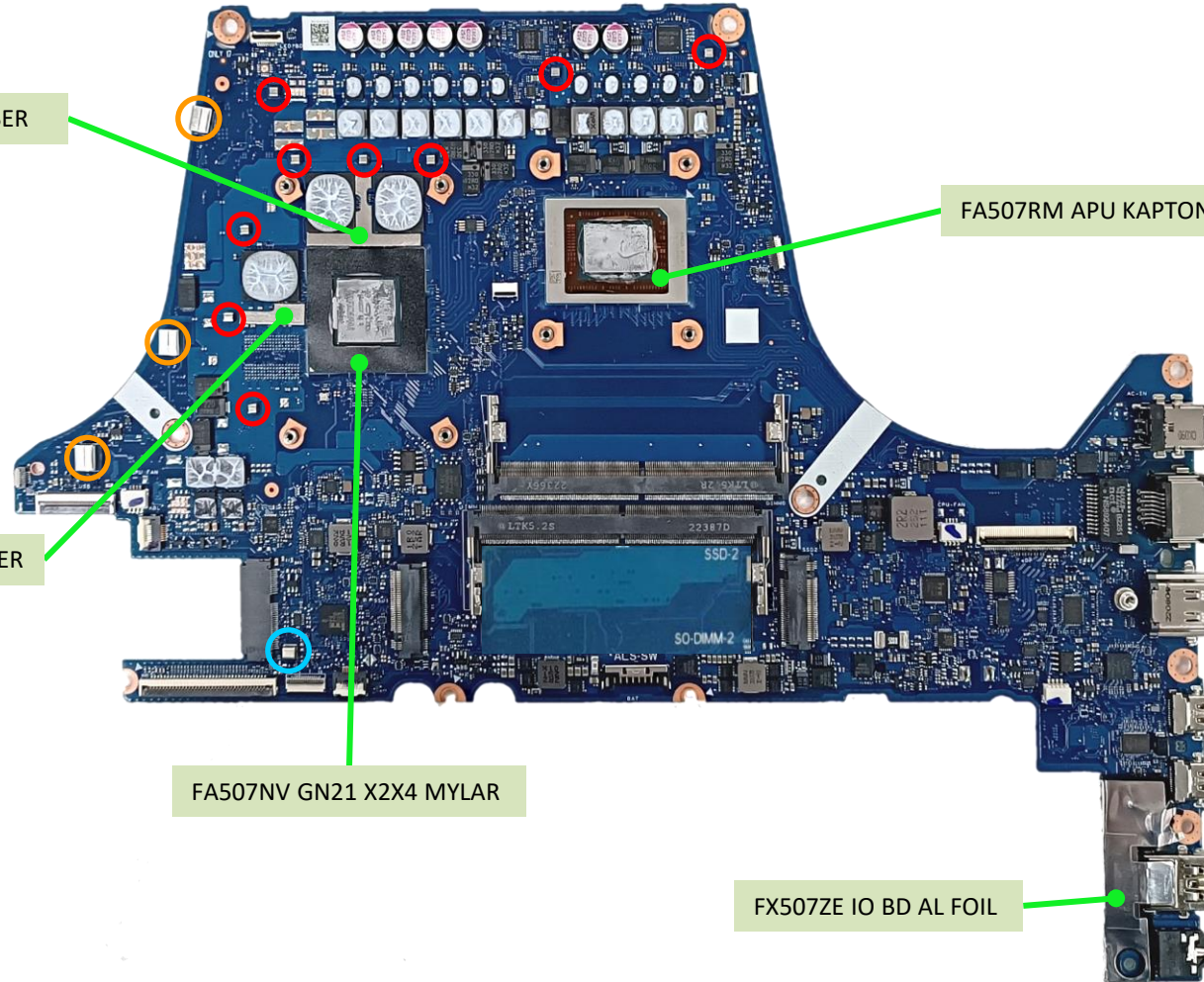


Materials on mainboard

BOT SIDE

⚠ Parts marked in yellow can be ordered/replaced separately at L2 repair level. When L3/L4 repair finished, no need to paste new one if shortage of this material on the MB.

	9	FX507VU SMT GASKET 2-2-2
	3	Z272SD SMT GASKET W5*H5.5*L6
	1	N551JQ SMT GASKET 3*2.5*3

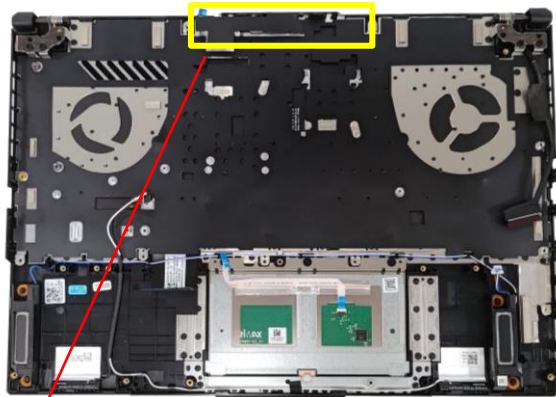


Disassembly Notice



The device has an Ambient Light Sensor (ALS) for power-off protection Function.

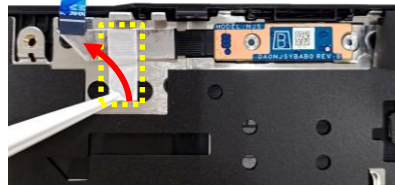
- Step 1 : Flip the (red mark) MYLAR on the LED Module.
- Step 2 : Release the foil of the cable.
- Step 3 : Remove the LED Module.
- Step 4 : Disconnect the LED FFC from LED BOARD.



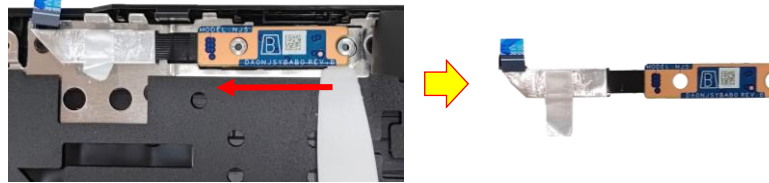
1 Release



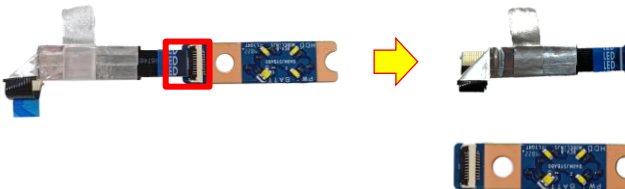
2 Release



3 Remove



4 Disconnect



Assembly Notice

⚠ If FFC is damage during disassembly, please replace new one. Here are some samples of FFC damage:



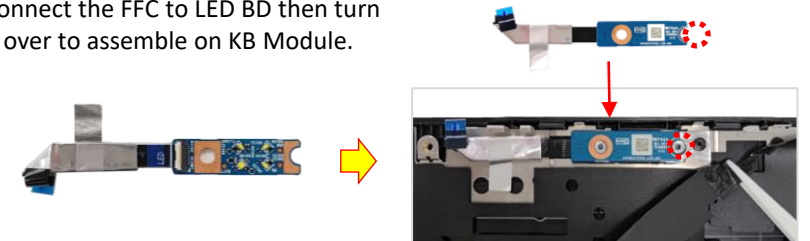
⚠ The TOP LED SPONGE and LED BD AL FOIL are not reusable after the disassembly LED BOARD, before assembly LED BOARD Module, please follow the steps below to paste the new TOP LED SPONGE and LED BD AL FOIL.



Step1 :
Paste TOP LED SPONGE *1pc

Step2 :
Paste LED BD AL FOIL *1pc

Step3 :
Connect the FFC to LED BD then turn it over to assemble on KB Module.



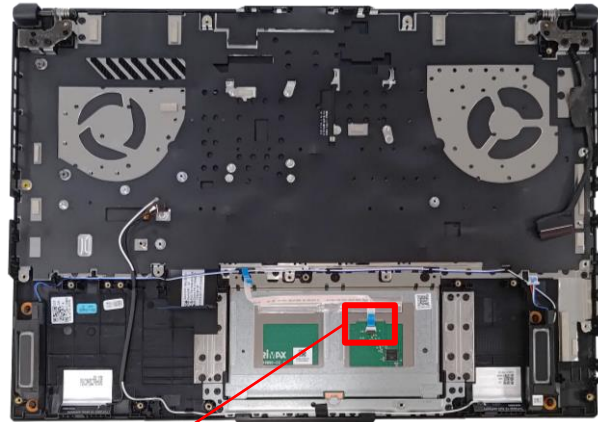
Disassembly Notice



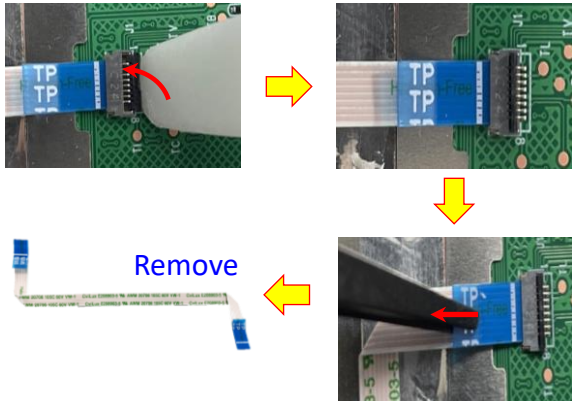
The device has an Ambient Light Sensor (ALS) for power-off protection Function.

Step 1 : Disconnect the TP FFC connector (red mark) and remove the TP FFC.

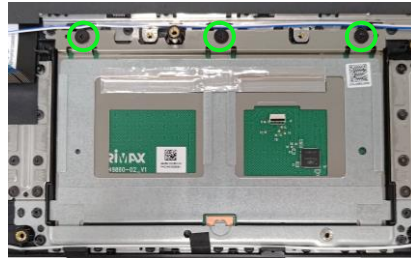
Step 2 : Remove the screws*3pcs and take out the Touchpad.



1 Disconnect



2 Remove



Screws	QTY	Spec	Torque (kgf-cm)
	3	M2*2L(6.2,0.55)(K)#1	2.0 ±0.2

Assembly Notice

If FFC is damage during disassembly, please replace new one. Here are some samples of FFC damage:

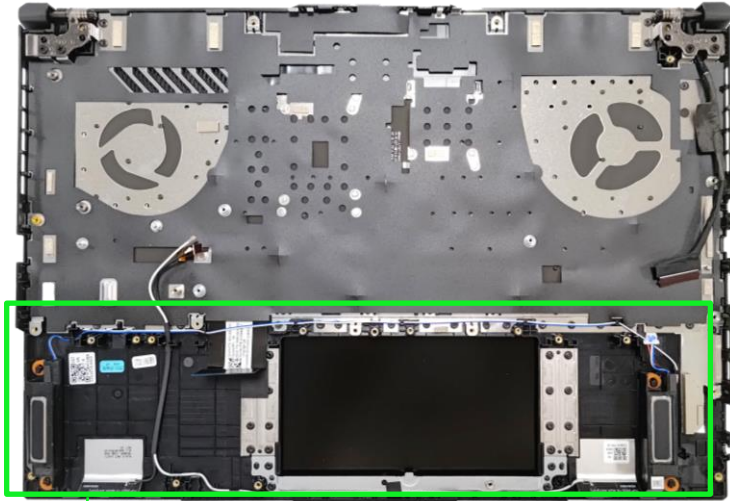


Disassembly Notice



The device has an Ambient Light Sensor (ALS) for power-off protection Function.

Step 1 : Remove the SPEAKER.

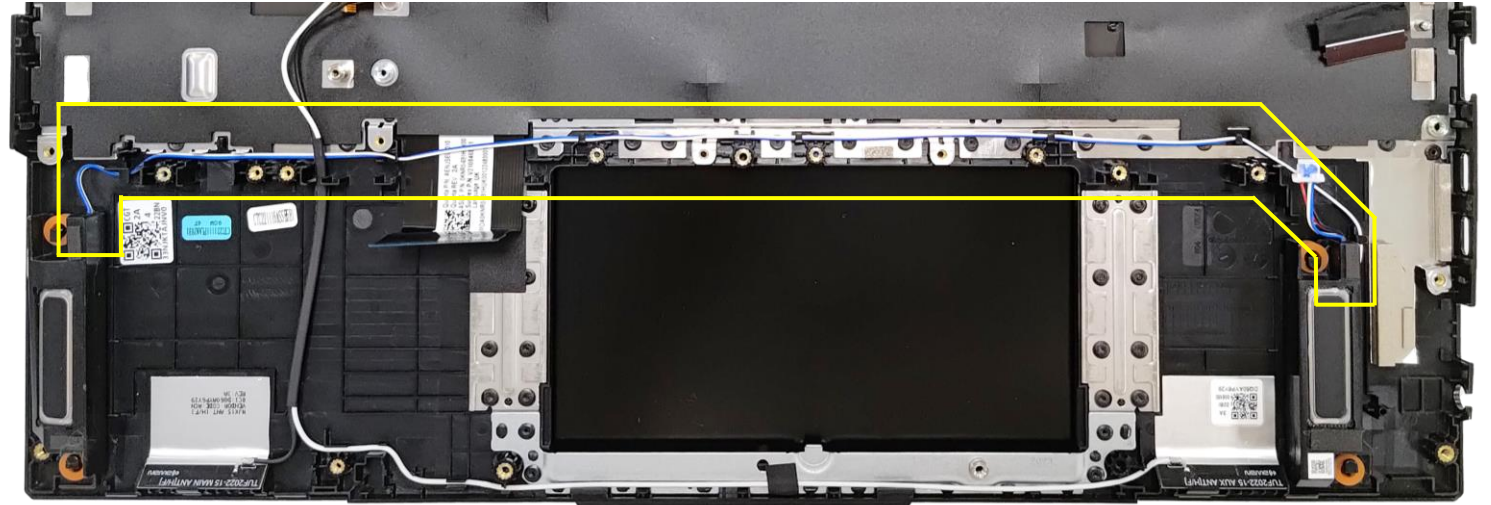


1 Remove



Assembly Notice

⚠ For Speaker assembly, please follow the yellow mark below to tidy up cable.



Disassembly Notice

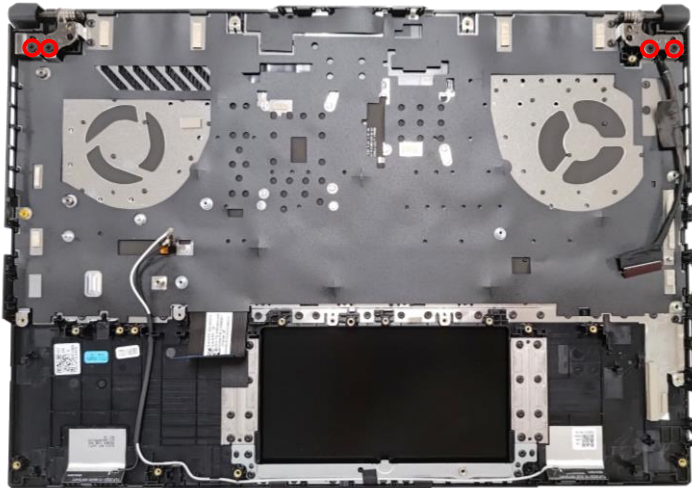


The device has an Ambient Light Sensor (ALS) for power-off protection Function.

Step 1 : Remove the screws*4pcs (red mark).

Step 2 : Open and remove the KEYBOARD MODULE.

Screws	QTY	Spec	Torque (kgf-cm)
	4	M2.5*5L(K)B-ZN NY#1	2.5±0.2



2 Open and remove



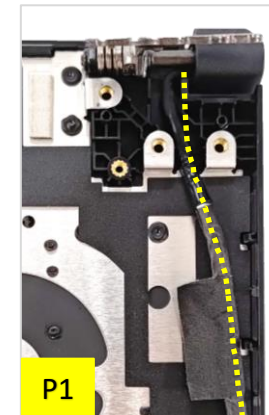
1 Remove red mark screws

Assembly Notice

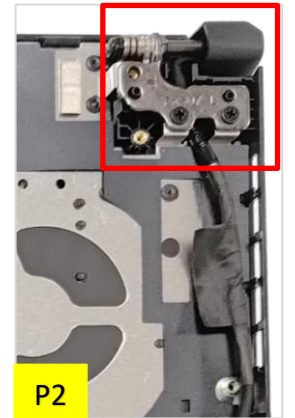
Please refer below picture to organize EDP cable while repair device, it's to keep device safety.

P1. EDP cable need to following yellow dotted line to organize EDP cable.

P2. After assembling hinge as picture.



P1



P2

Disassembly Notice

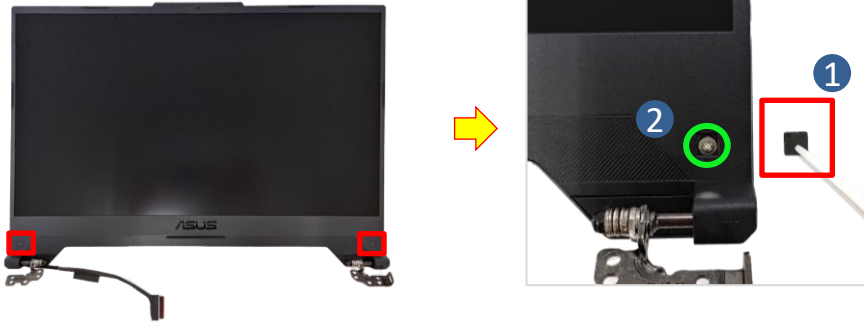


The device has an Ambient Light Sensor (ALS) for power-off protection Function.

Step 1 : Remove the BEZEL COSMETIC MYLAR*2pcs.

Step 2 : Remove the screws*2pcs.

Step 3 : Remove the LCD BEZEL.

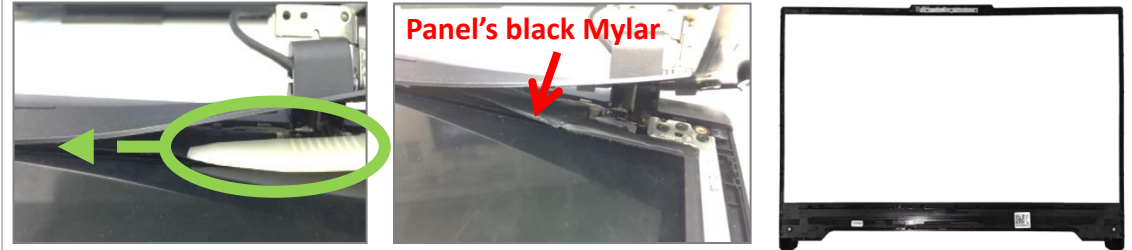


Screws	QTY	Spec	Torque (kgf-cm)
	2	M2.5*3.5L(4.5,0.5)(K)#1	2.50±0.2

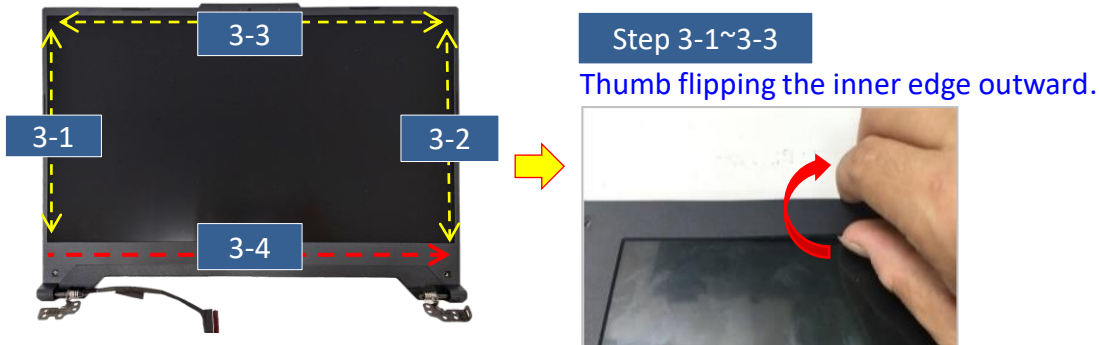
Step 3-4 Due to some tapes behind the lower edge of bezel, please using plastic blade to teardown the bezel.

Please follow the direction shown in the red arrow, to move plastic blade from left to right and peel the bezel away slowly. **While peeling, please move the blade in the parallel direction to the panel and pressing the black Mylar downward** (As circled in green) to ensure the black Mylar and the tape behind the bezel are well separated.

Please move blade slowly to separate the bezel away, and must press the black Mylar downward with panel parallel direction..



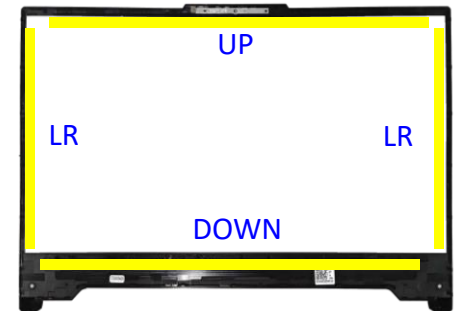
3
Step 3-1~3-3, Start from the middle area of each side of bezel, Using the forefinger to hold the outer edge firmly and the thumb flipping the bezel inner edge outward to release the hooks as indicated in the diagram shown. (It can be helpful, if holding the bezel outer edge firmly with forefinger.)



Assembly Notice

When reuse the LCD BEZEL:

Please paste new LCD BEZEL ADHESIVE before assembly BEZEL.
(New LCD BEZEL already contains LCD BEZEL ADHESIVE *4pcs)



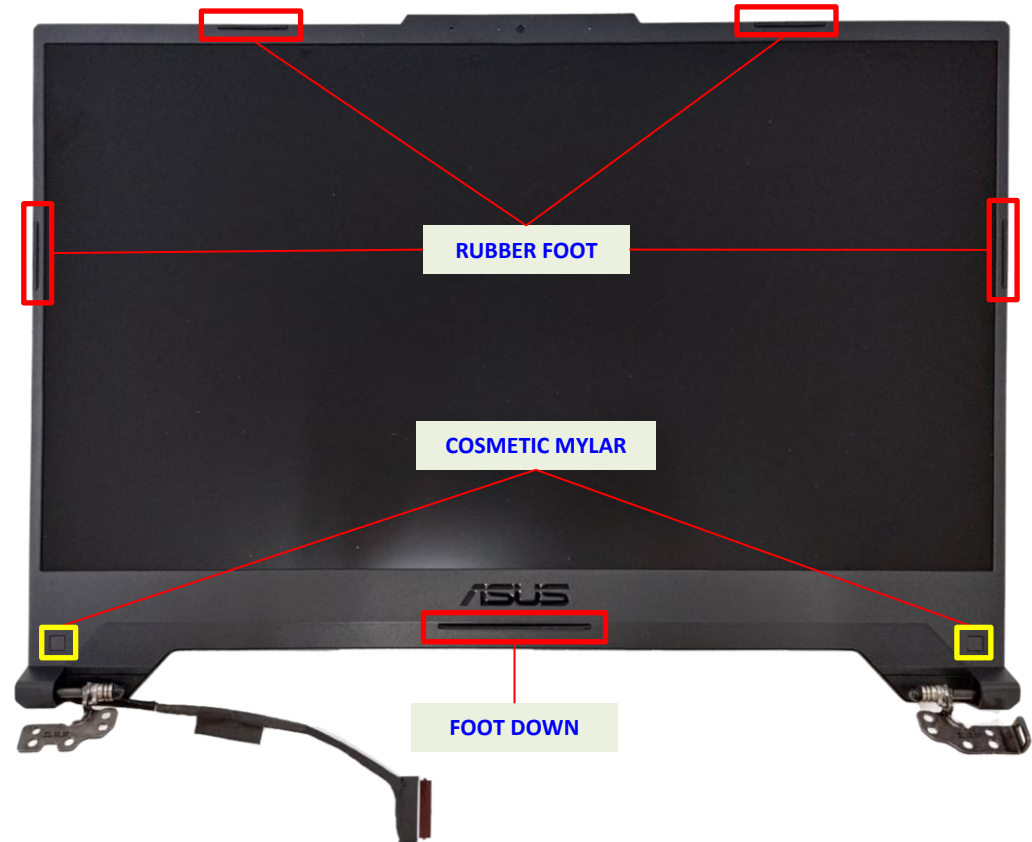
Assembly Notice



The device has an Ambient Light Sensor (ALS) for power-off protection Function.

A Please ensure and check the rubbers attached to the LCD Bezel as illustrated:

B Please ensure and check the COSMETIC MYLARS attached to the LCD Bezel as illustrated:



Disassembly Notice



The device has an Ambient Light Sensor (ALS) for power-off protection Function.

Step 1 : Remove the screws*4pcs and remove the hinges*2pcs.

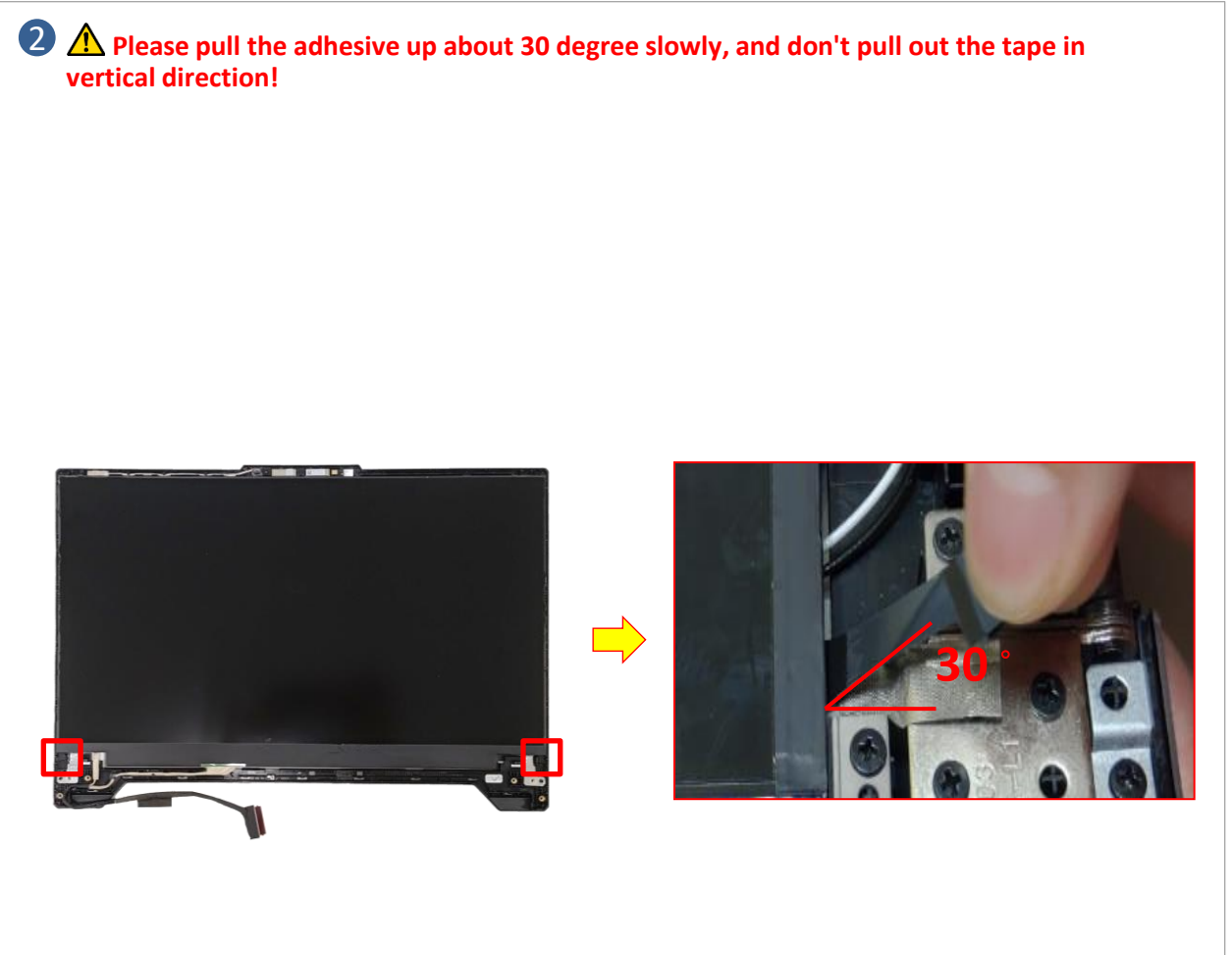
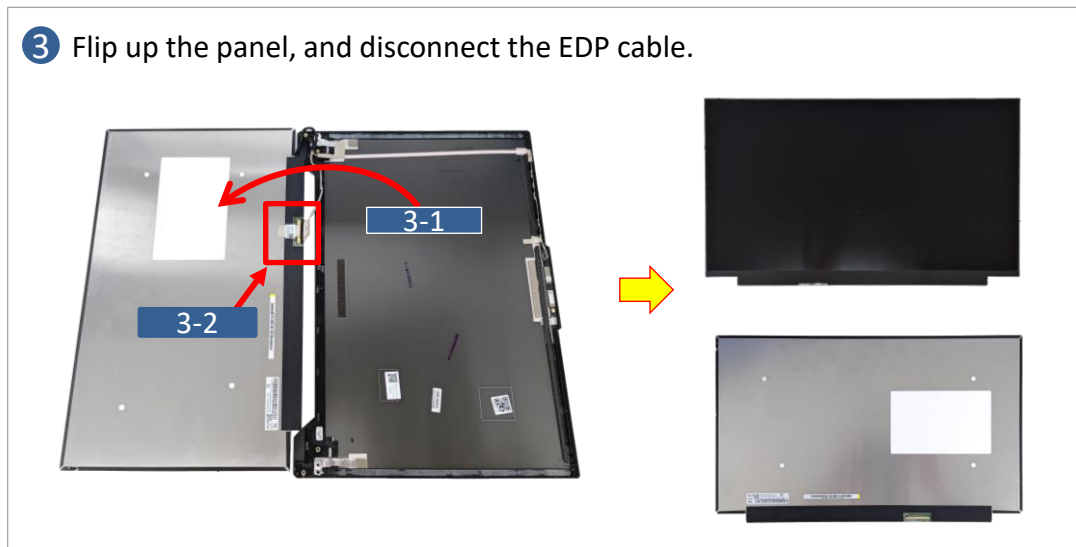
Step 2 : Pull out the LCD adhesive*2pcs.

Step 3 : Remove the LCD PANEL.

Screws	QTY	Spec	Torque (kgf-cm)
	4	M2.5*3L #1	2.50±0.2



② Please pull the adhesive up about 30 degree slowly, and don't pull out the tape in vertical direction!

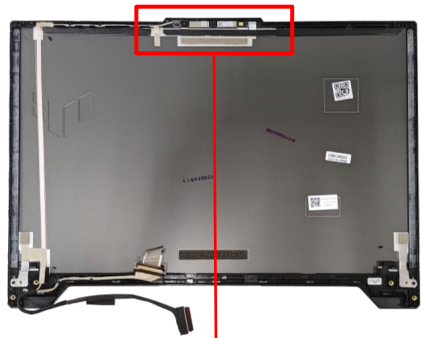


Disassembly Notice



The device has an Ambient Light Sensor (ALS) for power-off protection Function.

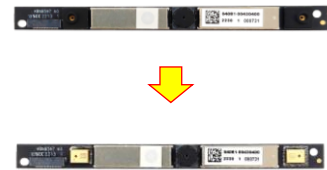
- Step 1 : Disconnect the (Red mark) Camera connector.
- Step 2 : Release the (yellow mark) tape.
- Step 3 : Remove EDP cable.
- Step 4 : Remove the Camera module.
- Step 5 : Remove MIC RUBBER*2pcs.



4



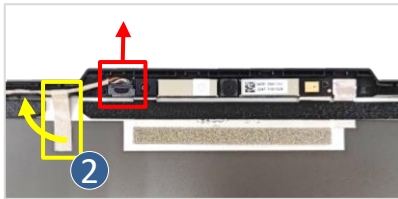
5



MIC RUBBER



1 Disconnect



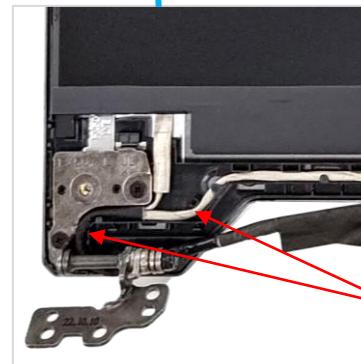
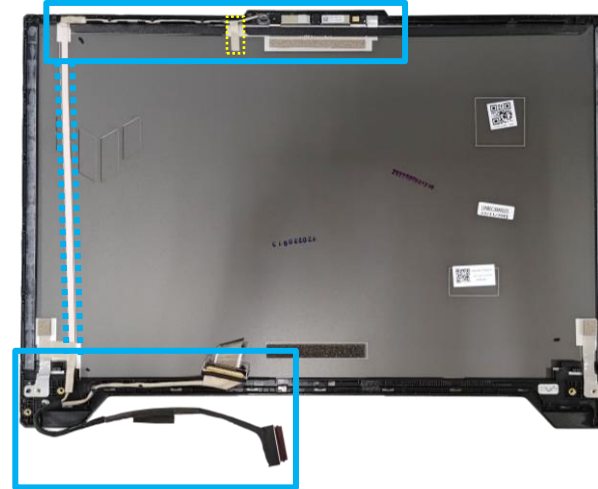
2

3



Assembly Notice

⚠ Please follow the blue mark to tidy up EDP cable.



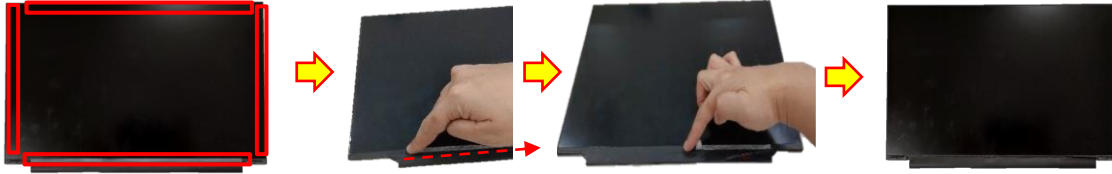
When assembling the left hinge, please pay attention to the location of the EDP cable

Assembly Notice



The device has an Ambient Light Sensor (ALS) for power-off protection Function.

- A** When reuse the LCD PANEL or BEZEL : (The following is an operation example)
Please use the fingertip to clean the residual glue on PANEL or BEZEL.



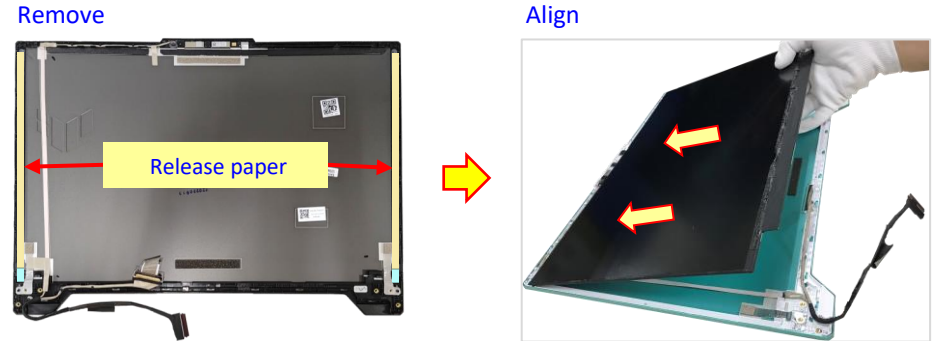
- B** Clean the back of the LCD PANEL :
Before assembling the LCD panel, use a dust-free cloth and a small amount of alcohol to clean the back of the panel.



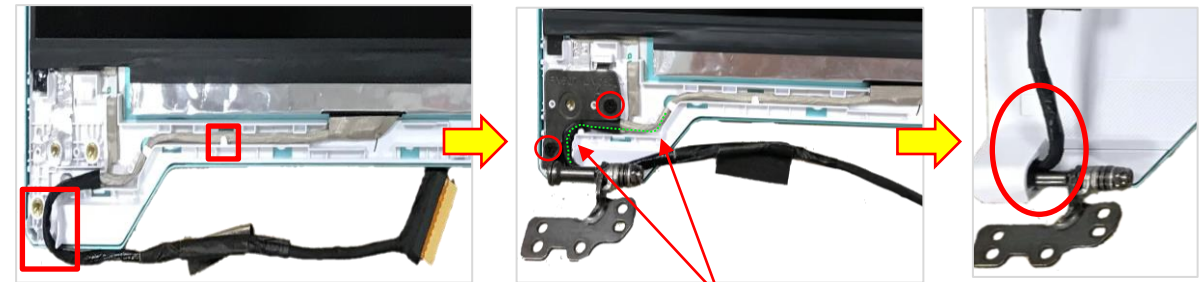
- C** When replace the LCD and reuse the LCD COVER :
Please paste new LCD COVER TAPE*2pcs.



- D** When assembly the LCD PANEL : (The following is an operation example)
Step 1 : Remove release paper of LCD Adhesive*2pcs.
Step 2 : Assembly and align the LCD to the upper side of the LCD Cover.



- E** Please refer the below pictures to assemble the EDP cable : (The following is an operation example)
Step 1: Make sure the cable is secured to the clip as below red mark.
Step 2: Put the hinge back in and lock screws*2pcs on each side.
Step 3: Put the bezel back and make sure the cable through the bezel as below red circle.



When assembling the left hinge, please pay attention to the location of the EDP cable(green).