

# **ASUS ROG Zephyrus G15 (GA503R) Series**

## **Service Guide**

## COPYRIGHT INFORMATION

No part of this manual, including the products and software described in it, may be reproduced, transmitted, transcribed, stored in a retrieval system, or translated into any language in any form or by any means, except documentation kept by the purchaser for backup purposes, without the express written permission of ASUSTeK COMPUTER INC. (“ASUS”).

ASUS PROVIDES THIS MANUAL “AS IS” WITHOUT WARRANTY OF ANY KIND, EITHER EXPRESS OR IMPLIED, INCLUDING BUT NOT LIMITED TO THE IMPLIED WARRANTIES OR CONDITIONS OF MERCHANTABILITY OR FITNESS FOR A PARTICULAR PURPOSE. IN NO EVENT SHALL ASUS, ITS DIRECTORS, OFFICERS, EMPLOYEES OR AGENTS BE LIABLE FOR ANY INDIRECT, SPECIAL, INCIDENTAL, OR CONSEQUENTIAL DAMAGES (INCLUDING DAMAGES FOR LOSS OF PROFITS, LOSS OF BUSINESS, LOSS OF USE OR DATA, INTERRUPTION OF BUSINESS AND THE LIKE), EVEN IF ASUS HAS BEEN ADVISED OF THE POSSIBILITY OF SUCH DAMAGES ARISING FROM ANY DEFECT OR ERROR IN THIS MANUAL OR PRODUCT.

Products and corporate names appearing in this manual may or may not be registered trademarks or copyrights of their respective companies, and are used only for identification or explanation and to the owners’ benefit, without intent to infringe.

SPECIFICATIONS AND INFORMATION CONTAINED IN THIS MANUAL ARE FURNISHED FOR INFORMATIONAL USE ONLY, AND ARE SUBJECT TO CHANGE AT ANY TIME WITHOUT NOTICE, AND SHOULD NOT BE CONSTRUED AS A COMMITMENT BY ASUS. ASUS ASSUMES NO RESPONSIBILITY OR LIABILITY FOR ANY ERRORS OR INACCURACIES THAT MAY APPEAR IN THIS MANUAL, INCLUDING THE PRODUCTS AND SOFTWARE DESCRIBED IN IT.

Copyright © 2024 ASUSTeK COMPUTER INC. All Rights Reserved.

## LIMITATION OF LIABILITY

Circumstances may arise where because of a default on ASUS’ part or other liability, you are entitled to recover damages from ASUS. In each such instance, regardless of the basis on which you are entitled to claim damages from ASUS, ASUS is liable for no more than damages for bodily injury (including death) and damage to real property and tangible personal property; or any other actual and direct damages resulted from omission or failure of performing legal duties under this Warranty Statement, up to the listed contract price of each product.

ASUS will only be responsible for or indemnify you for loss, damages or claims based in contract, tort or infringement under this Warranty Statement.

This limit also applies to ASUS’ suppliers and its reseller. It is the maximum for which ASUS, its suppliers, and your reseller are collectively responsible.

UNDER NO CIRCUMSTANCES IS ASUS LIABLE FOR ANY OF THE FOLLOWING: (1) THIRD-PARTY CLAIMS AGAINST YOU FOR DAMAGES; (2) LOSS OF, OR DAMAGE TO, YOUR RECORDS OR DATA; OR (3) SPECIAL, INCIDENTAL, OR INDIRECT DAMAGES OR FOR ANY ECONOMIC CONSEQUENTIAL DAMAGES (INCLUDING LOST PROFITS OR SAVINGS), EVEN IF ASUS, ITS SUPPLIERS OR YOUR RESELLER IS INFORMED OF THEIR POSSIBILITY.

## Disclaimer

ASUS is not responsible for direct, indirect, intentional or unintentional damages resulting from improper installation and operation.

## Safety precautions

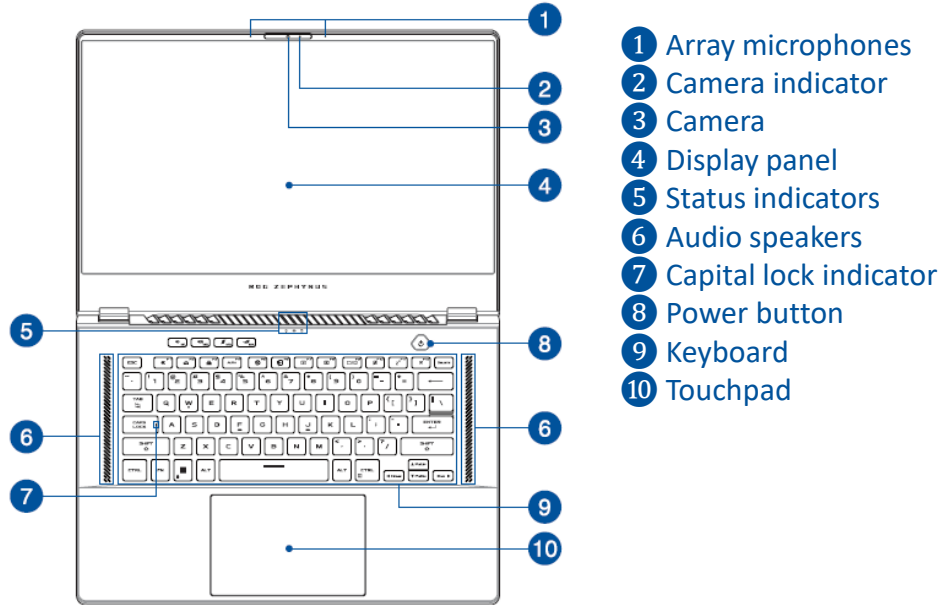
- Keep liquids or moisture away from your Notebook PC before installing or removing any components.
- Ensure to place your Notebook PC on a stable surface before installing or removing any components.
- Detach the clip or flap before removing the signal cables to prevent damage.
- Disconnect the power plug by pulling the plug evenly to avoid damage. Ensure to connect the signal cables in the correct orientation.
- Disconnect all power cables and remove the battery pack (if applicable) before cleaning your Notebook PC with liquid detergent to avoid risk of electric shock.
- Disconnect all power cables and remove the battery pack (if applicable) before installing or removing any components. Ensure to read and follow the instructions in the manual.
- Before handling components, use a grounded wrist strap or touch a safely grounded object to avoid damaging them due to static electricity.
- Keep liquids or moisture away from your Notebook PC to avoid short circuits.
- Hold components by the edges to avoid touching the ICs.
- Ensure to properly install all the components before connecting the AC power.
- Do not use power adapters or batteries from other devices to reduce the risk of injury to persons due to fire or explosion. Use only certified power adapters or batteries supplied by the manufacturer or authorized retailers.
- Ensure to install the correct screw models on your Notebook PC to prevent damage.

- [Service Overview](#)
- [ASUS ROG Zephyrus G15 \(GA503R\) Series Overview](#)
- [Components Top View](#)
- [Components Bottom View](#)
- [Repair Overview](#)
- [Appropriate Tools](#)
- [Key Parts and Related Parts](#)
- Disassembly Steps :
  - [BOTTOM CASE](#)
  - [BATTERY](#)
  - [SSD](#)
  - [DDR](#)
  - [WIFI CARD](#)
  - [WOOFER SPEAKER](#)
  - [SENSOR BD](#)
  - [FAN](#)
  - [MAIN BOARD AND THERMAL MODULE](#)
  - [TWEETER SPEAKER](#)
  - [THERMAL MODULE](#)
  - [MAIN BOARD](#)
  - [POWER SWITCH\\_BD](#)
  - [TOUCHPAD MODULE](#)
  - [KEYBOARD MODULE](#)
  - [LCD BEZEL](#)
  - [LCD PANEL](#)
  - [LCD COVER](#)

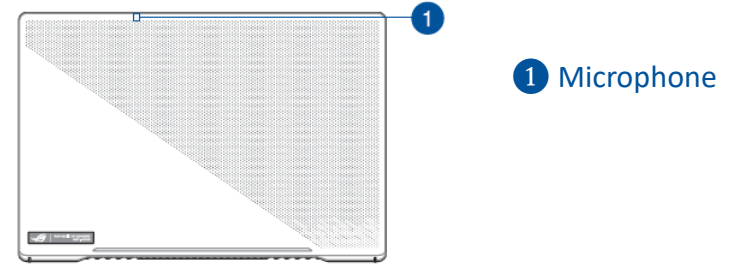
- **Carefully read through this Service Guide for a look at various components of the device before performing any service and repairs.**
- To provide the best service, we have provided the below information for technicians from distributors and resellers to perform the complete device disassembly and assembly. Before performing the procedures, please be sure to read through the overview in this service guide for component overview to avoid any unwarranted damages to the device hardware.
- The following contents include all part numbers mentioned in the service guide are **used for reference only**, if you need the exact part number for ordering, please refer to the OrderBook.
- Due to sales policy difference, the components might have different specifications on the same series product, please refer to E-manual by model.

Due to sales policy difference, the components may have different specifications on the same model. If you have any operational issues, please contact the service hotline.

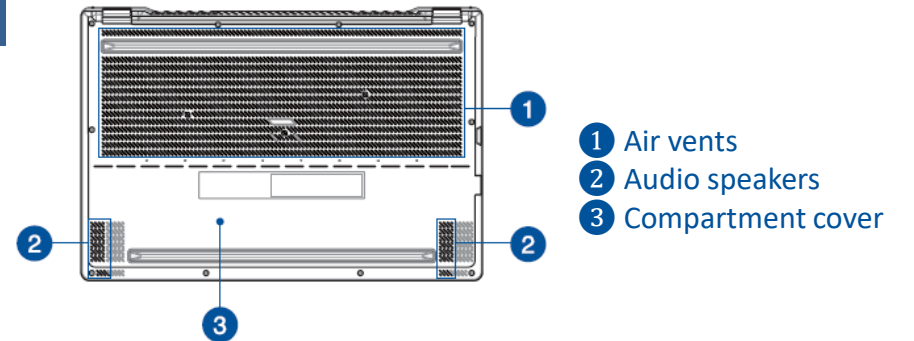
## Top View



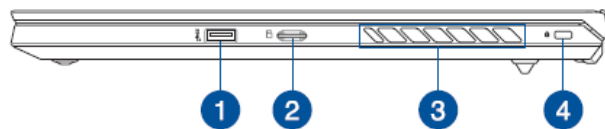
## Cover



## Bottom View

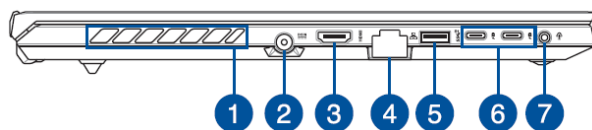


## Right View



- 1 USB 3.2 Gen 2 port
- 2 MicroSD card slot
- 3 Air vents
- 4 Kensington® security slot

## Left View



- 1 Air vents
- 2 Power (DC) input port
- 3 HDMI output port
- 4 LAN port
- 5 USB 3.2 Gen 2 port
- 6 USB 3.2 Gen 2 Type-C® /DisplayPort/ Power Delivery combo port
- 7 Headphone/Headset/Microphone jack

◆ LCD COVER ASSY



◆ BOTTOM CASE



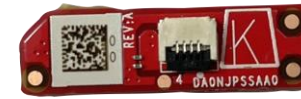
◆ SSD ABSORBER



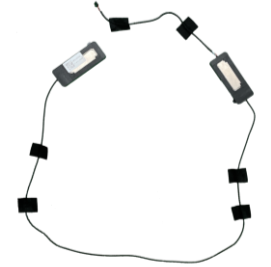
◆ DDR



◆ SENSOR BD



◆ TWEETER SPEAKER



◆ 15.6 LCD PANEL



◆ BATTERY



◆ SSD AL FOIL



◆ SODIMM ABSORBER



◆ HALL SENSOR FFC



◆ THERMAL MODULE ASSY



◆ LCD BEZEL



◆ BATTERY CABLE



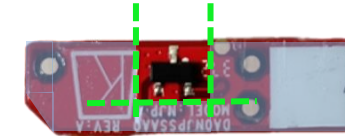
◆ THERMAL PAD TOP SSD



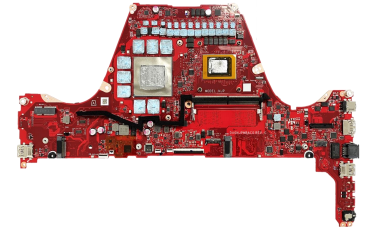
◆ WIFI CARD



◆ HALLSENSOR PCB ADH



◆ MAIN BOARD



◆ KEYBOARD MODULE



◆ SSD



◆ THERMAL PAD BOT SSD



◆ WOOFER SPEAKER



◆ VGA FAN ◆ CPU FAN



◆ POWER SWITCH\_BD.



# Components Top View

◆ FP PW FFC



◆ TP SPONGE



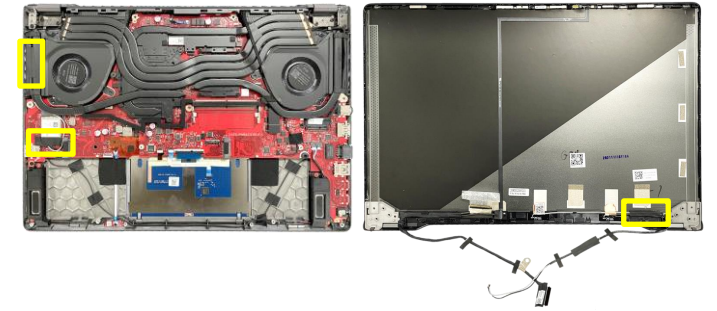
◆ CAMERA



◆ SCREW RUBBER



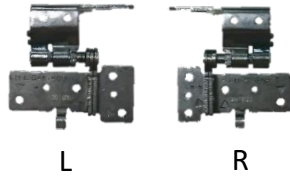
◆ CABLE TAPE



◆ POWER KEY



◆ HINGE



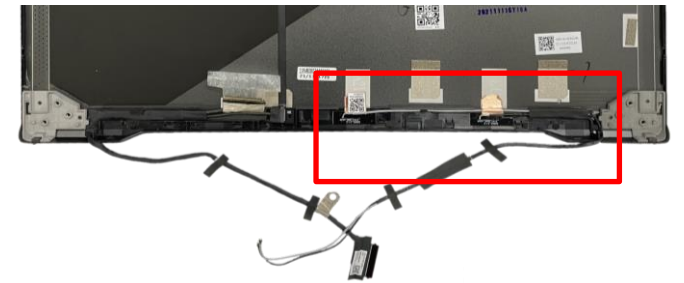
◆ MIC FPC



◆ EDP CABLE



◆ WIFI ANTENNA A1&A2



◆ TOUCHPAD MODULE



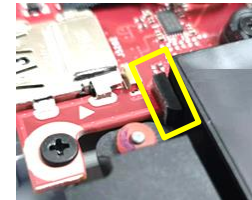
◆ HINGE CAP



◆ MIC RUBBER



◆ BATTERY RIB RUBBER



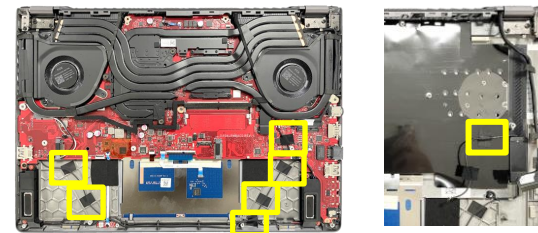
◆ TP FFC



◆ HINGE RUBBER

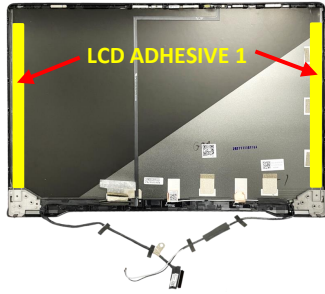


◆ TWEETER TAPE





◆ LCD COVER ASSY



◆ KEYBOARD MODULE



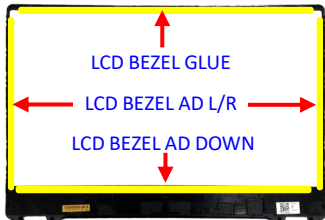
◆ MAIN BOARD



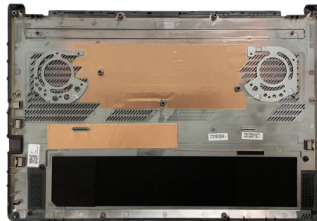
◆ POWER SWITCH\_BD.



◆ LCD BEZEL



◆ BOTTOM CASE



◆ SENSOR BD



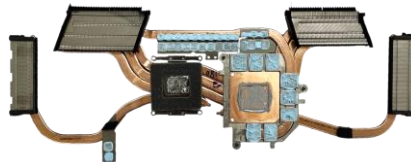
◆ POWER KEY



◆ 15'6 LCD PANEL



◆ THERMAL MODULE ASSY



◆ TOUCHPAD MODULE



This chapter describes disassembly and assembly (Assemble document please look up from the last page), please follow the information provided in this section to perform the complete disassembly procedure.

## ◆ Precautions:

Before you perform any service or repair on the notebook, please pay special attention to the cautions prevent any damages to the notebook.

1. Be sure that the notebook is powered down.
2. Before disassembling any part, please disconnect all power source. ex: AC plug/Battery connector/Power protect screw etc.

3. Remove all rings, watches and any other metal objects from your hands.



4. Always wear a ground strap on your hand to protect the notebook from static discharge.
5. Please refer to “ANSI ESD S20.20” about ESD protection measure.
6. Put the disassembled parts in the functional PE BAG to avoid any damages of the A/B/C/D part.



7. The maintenance environment temperature is 20-30 °C and humidity is 40% - 70%.
8. To avoid scratching on the surface of machine; please use anti-static and soft materials to put on desk in repair environment as below photo.



9. Screw Appearance Criteria:

If the screws have the following damaged appearance, please do not use.

- a. Shape deformed.
- b. Damaged head – unable to drive in or the stripped screw.
- c. Damaged unable to securely tighten.
- d. Paint scratched off.
- e. Rusty



10. The following chapter includes all part numbers mentioned in service guide are used for reference only, actual part name depends on different SKU, if you need the exact part number for ordering, please refer to the Orderbook.
11. Due to sales policy difference, the components may have different specifications on the same model. Please note that all pictures and components shown on Service Guide are for disassembly/assembly description purpose only, so please refer to the actual product for disassemble/assemble.

Please prepare and select the appropriate tools to disassemble/assemble for the ASUS ROG ZEPHYRUS G15 (GA503R) notebook.

## ◆ Screwdriver

Please accord to different screw specification to choose different screwdriver and head.



## ◆ Plastic Blade



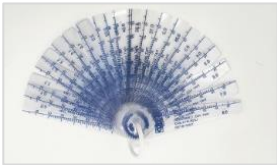
## ◆ Plastic Tweezers

Use a pair of tweezers to remove/insert/tidy up cables.



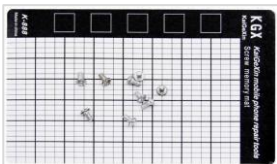
## ◆ Thickness Gauge

Thickness compass specification 0.05mm-1.5mm. Use it to measure the gap.



## ◆ Magnetism Board

Suggest local buy magnetism board to place screw, avoid mix different type screw to cause assembly damage.



## ◆ Alcohol 95%



## ◆ Glove



## ◆ Dust-free Cloth



## ◆ Thermal Pad PTM7958



## ◆ PLASTIC CARD T=0.35mm



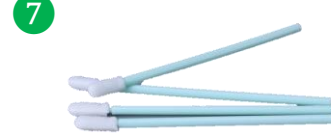
## ◆ PLASTIC PICK T=0.5mm



## ◆ FCR-AS Thermal Grease



Please prepare and select the appropriate tools to disassemble/assemble for the ASUS ROG ZEPHYRUS G15 (GA503R) notebook.



Item	Part Name	Memo
1	Silicone scraping pen	
2	Conductonaut 1g (Liquid Metal)	<ul style="list-style-type: none"> <li>▪Please store it in the environment of 10 ~ 40 °C.</li> <li>▪Please keep cover tightly closed until ready for next time use.</li> <li>▪Shipping category : Dangerous Goods.</li> </ul>
3	<b>AMD Rembrandt steel plate</b>	
4	Stainless steel plate (60mm*20mm*0.2t)	
5	95% alcohol	
6	Dust-free cloth	
7	Dust-free cotton swab//class 100 (100pcs)	

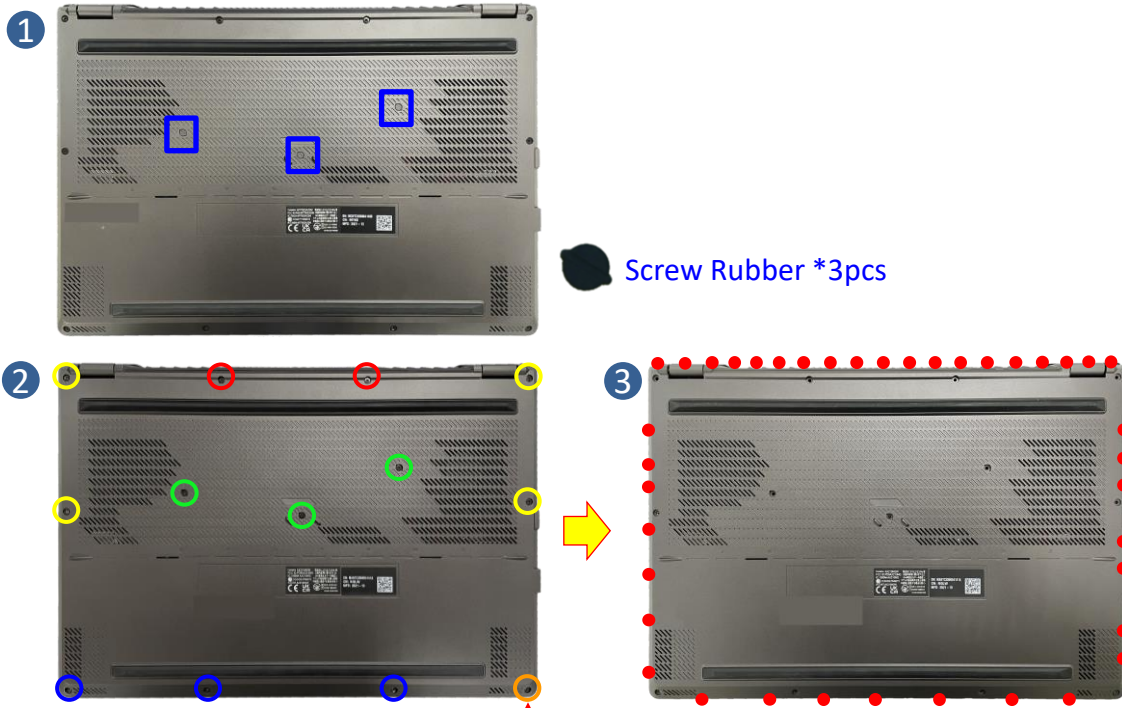
## Disassembly Notice

Step 1 : Remove the Screw Rubber \*3pcs.

Step 2 : Remove the screws \*12pcs.

Step 3 : Use the plastic blade to pry the bottom case.

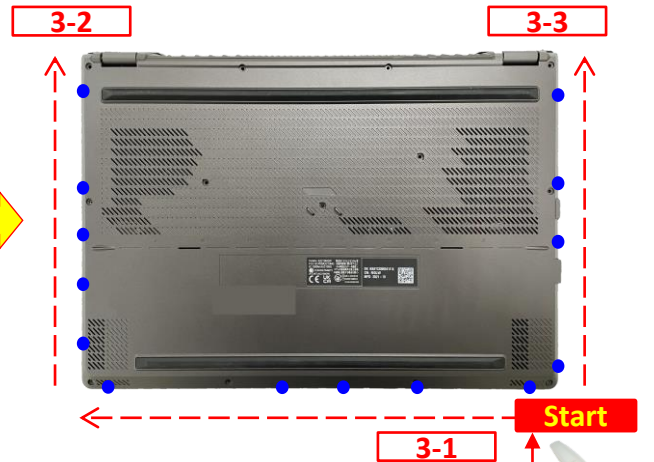
Screws	QTY	Spec	Torque (kgf-cm)
	2	M2*11.5L (4.5,0.8) (K) #1	2.0
	4	M2*11L (4.5,0.8) (K) #1	2.0
	3	M2*8L (4.5,0.8) (K) #1	2.0
	1	M2.5*3.4L+4.6(4.0,0.8) (K) #1	2.0
	3	M2*5.5L (4,0.8) (K)#1	2.0



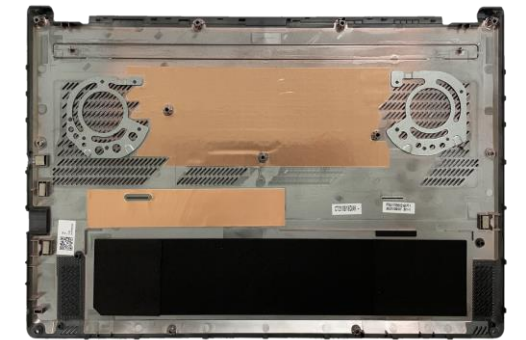
Screw Rubber \*3pcs

The screw is unable to remove from bottom case, so please always loosen it last, and lock it at first.

To avoid the bottom case snaps, don't insert plastic blade in each red circle.



Please follow above arrow direction with using plastic blade to pry bottom case in each blue circle location. (To avoid the bottom case hook, please prying at each blue circle location.)



**Assembly Notice** Please be sure to pull out adapter and disconnect the battery.

**⚠ When assembly the BOTTOM CASE:**

Please follow below order to install and fix BOTTOM CASE.

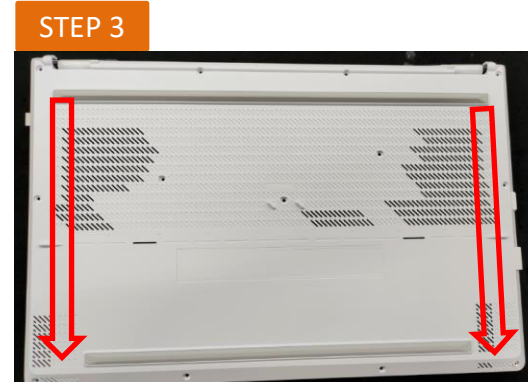
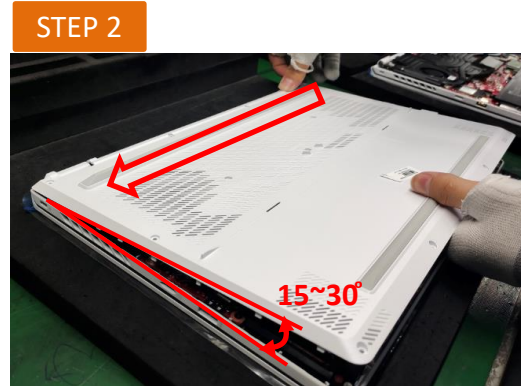
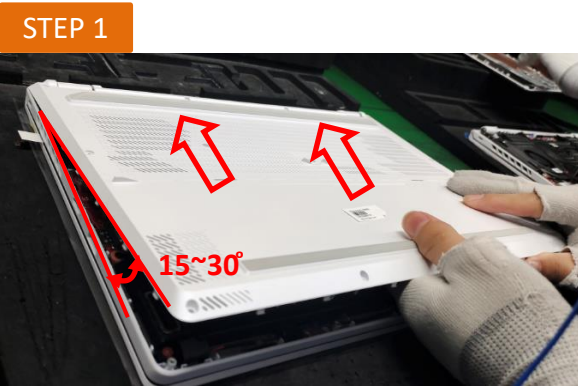
STEP 1 : Install BOTTOM CASE with slight tilt at upper side first.

STEP 2 : Keep BOTTOM CASE (By left hand) with slight tilt, and then press upper side of BOTTOM CASE to fix from right to left.

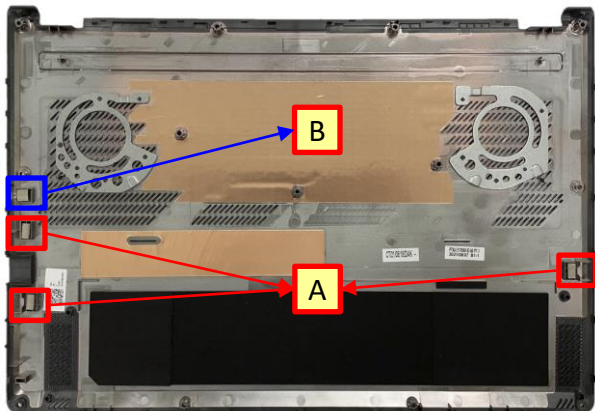
STEP 3 : Put the bottom case down slowly, and then press left and right side of BOTTOM CASE to fix.

STEP 4 : In the end, press lower side of BOTTOM CASE to fix.

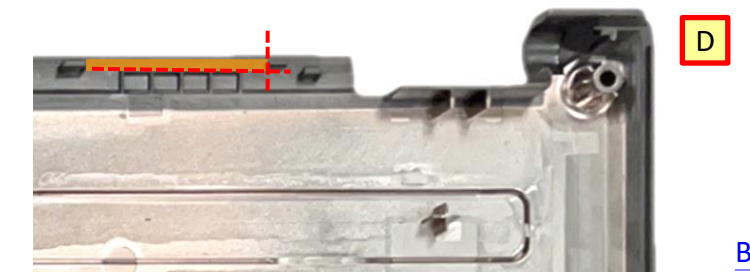
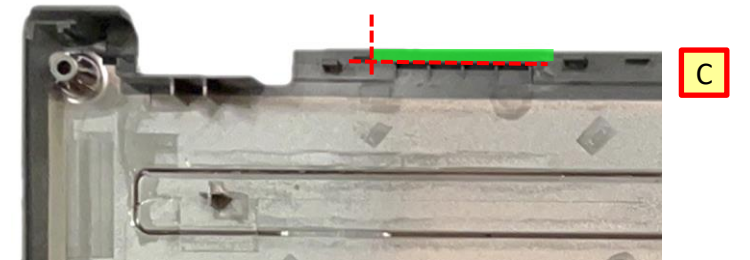
Parts Description
GU603ZX THERMAL COVER MYLAR 2
GU603ZX THERMAL COVER MYLAR 1



**⚠ Please according to location below to paste GASKET and MYLAR .**



	Parts Description
A	GA503RX BTM CASE IO GASKET
B	GA503RX BTM CASE DC GASKET
C	GU603ZX THERMAL COVER MYLAR 2
D	GU603ZX THERMAL COVER MYLAR 1



## Disassembly Notice

Please be sure to pull out adapter and disconnect the battery.

**⚠** Before disassembly battery connector, please be sure to pull out adapter and disconnect the battery more than ten seconds in order to IC damage.

Step 1 : Use the non-conductive pry tool to push iron sheet.

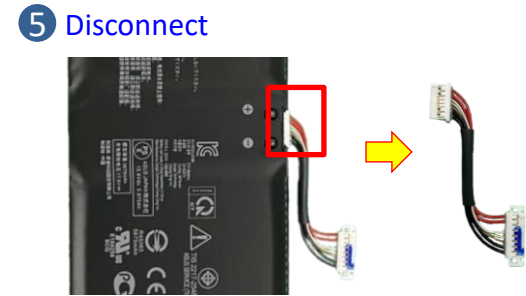
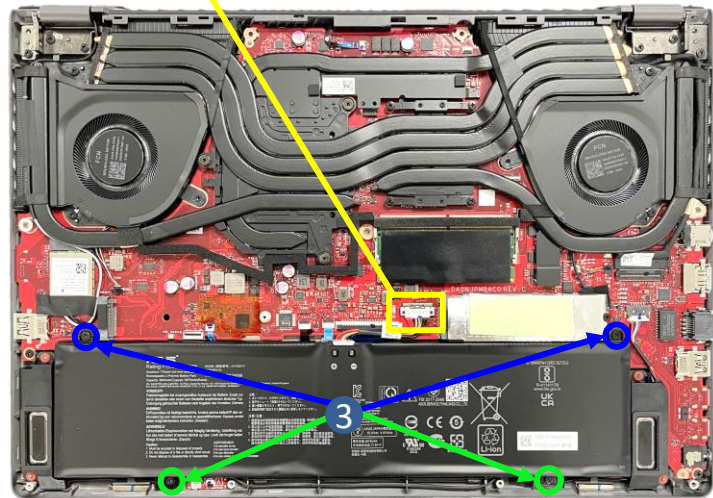
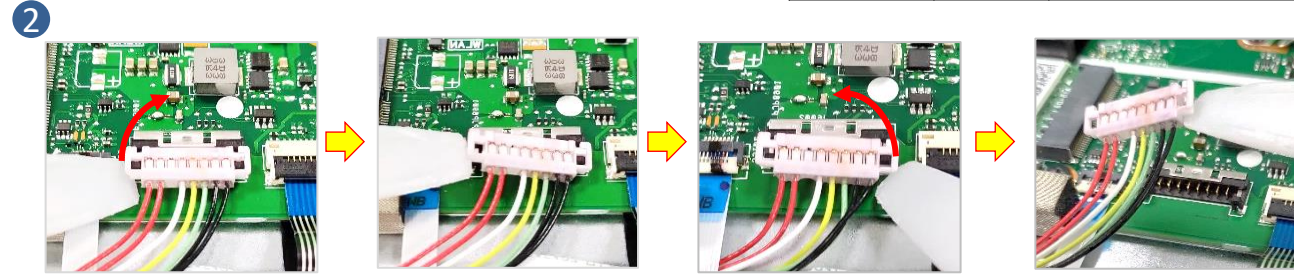
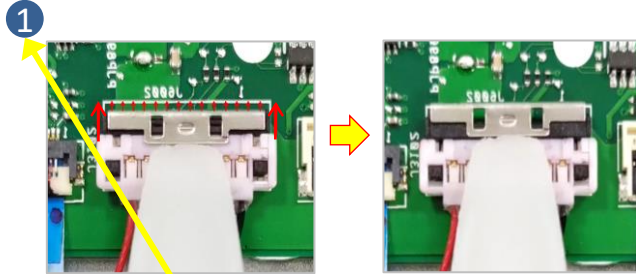
Step 2 : Use the non-conductive pry tool to disconnect battery connector.

Step 3 : Remove the screws \*4pcs.

Step 4 : Remove the BATTERY.

Step 5 : Disconnect the BATTERY CABLE from the BATTERY.

Screws	QTY	Spec	Torque(kgf-cm)
	2	M2*8L (4.5,0.8) (K) #1	2.0
	2	M2*4.5L (4.5,0.8) (K) #1	2.0



## Assembly Notice

Please be sure to pull out adapter and disconnect the battery.

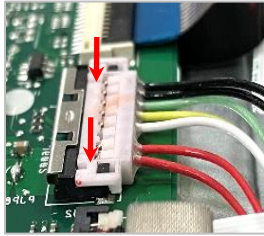
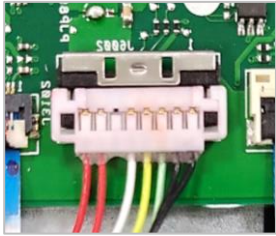
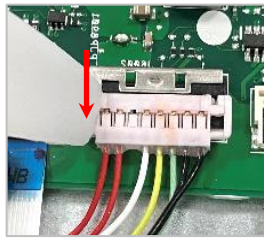
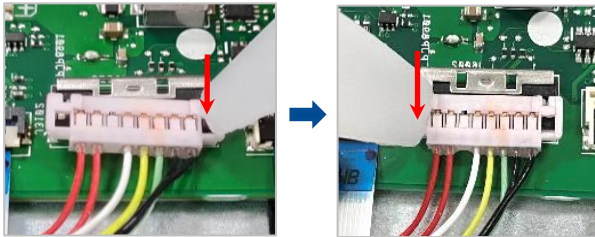


**⚠** To prevent getting a short circuit or an electric shock accident, please follow the below steps to connect the battery connector.

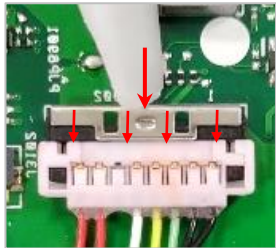
Step 1 : Use the non-conductive pry tool to connect the black cable side first, then connect the red cable side.

Step 2 : Use the non-conductive pry tool to push the iron sheet.

1

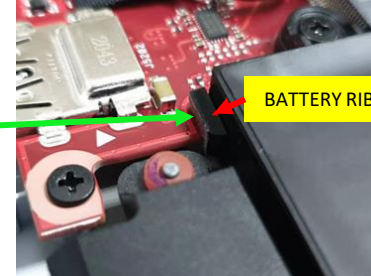
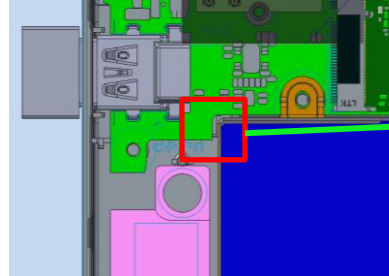


2



**⚠** For BATTERY RIB RUBBER assembly, please follow below location to paste.

\* The BATTERY RIB RUBBER need to be attached on the rib.





## Disassembly Notice

Please be sure to pull out adapter and disconnect the battery.

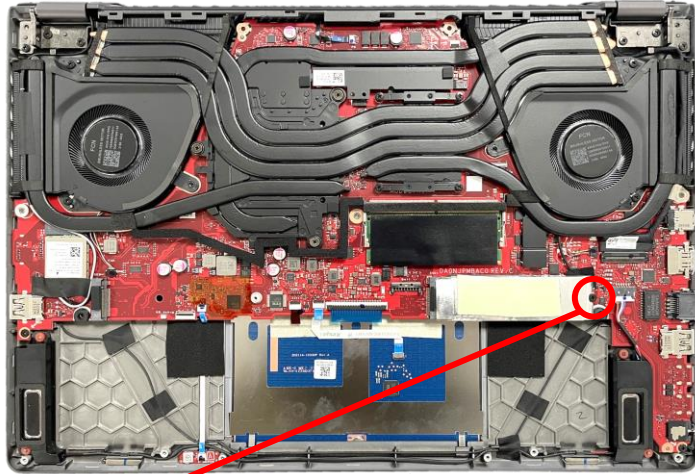
Step 1 : Remove the screw \*1pc.

Step 2 : Remove the SSD.

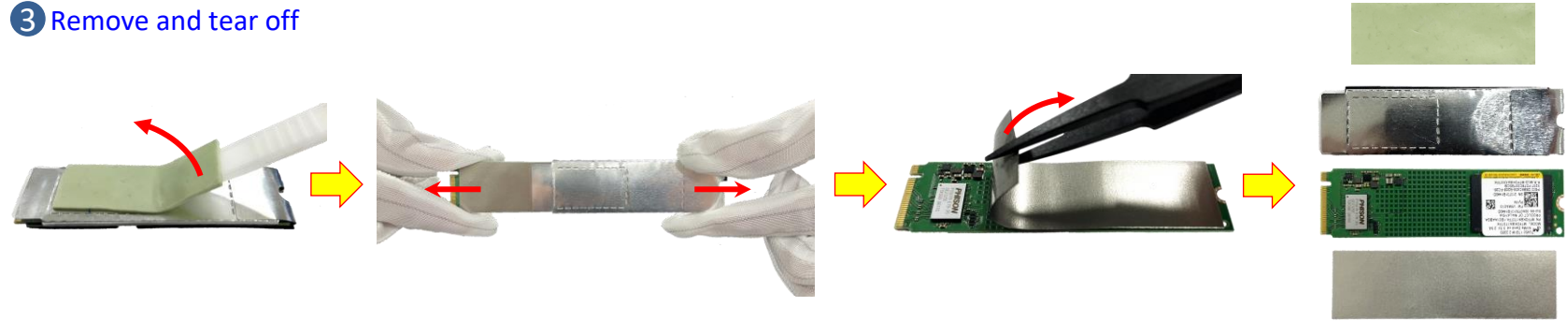
Step 3 : Remove the THERMAL PAD and the AL FOIL, tear off the ABSORBER from SSD.

Step 4 : Remove the THERMAL PAD from motherboard.

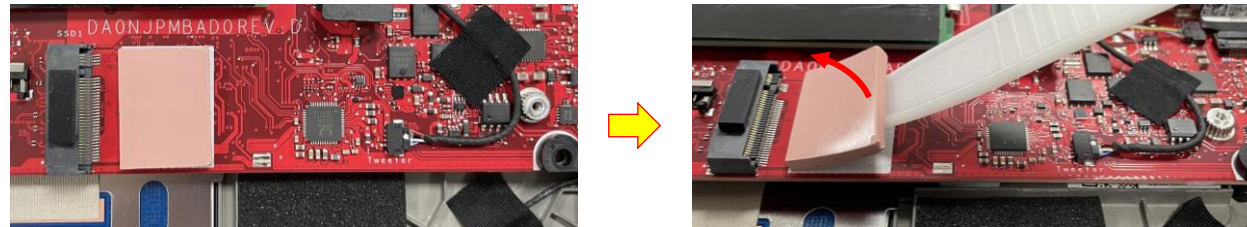
Screws	QTY	Spec	Torque (kgf-cm)
	1	M2*4.5L (4.5,0.8) (K) #1	2.5



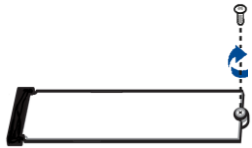
3 Remove and tear off



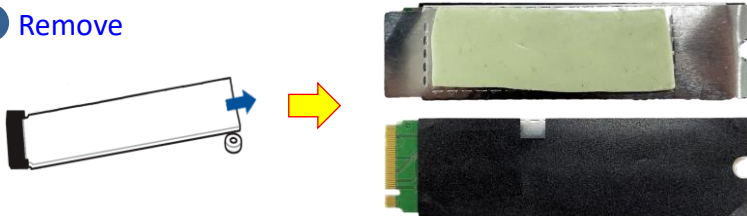
4 Remove



1 Remove

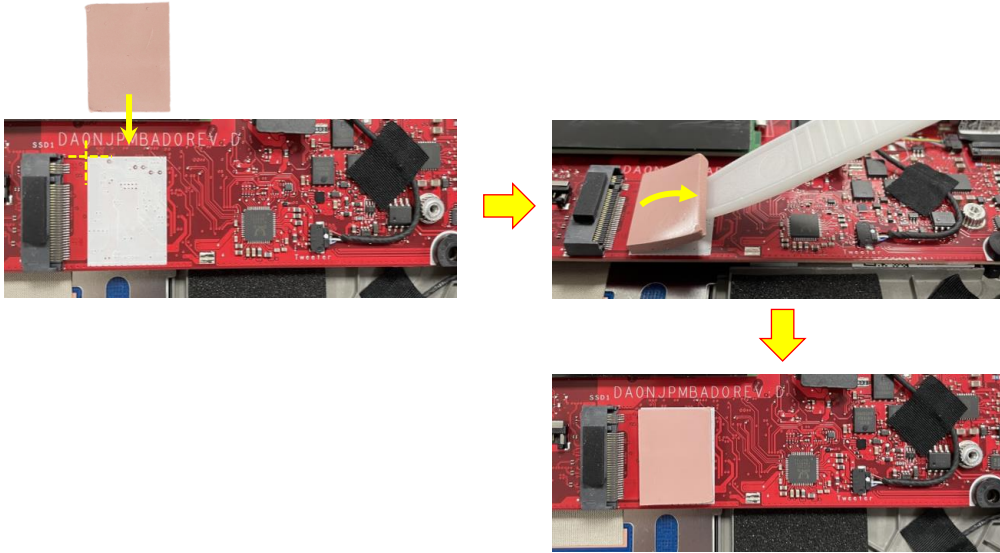



2 Remove

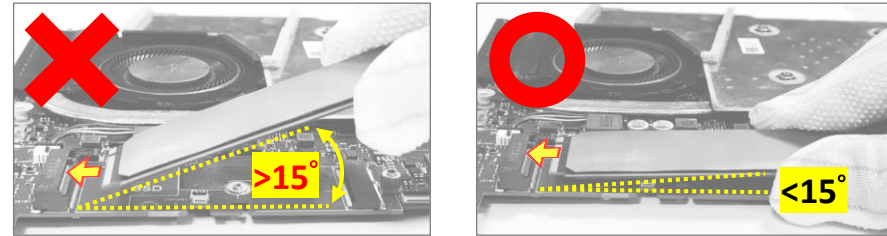



**Assembly Notice** Please be sure to pull out adapter and disconnect the battery. 

 Paste the THERMAL PAD on the motherboard.



 When installing the SSD, please keep the SSD less than 15 degrees with motherboard, and then insert the SSD.



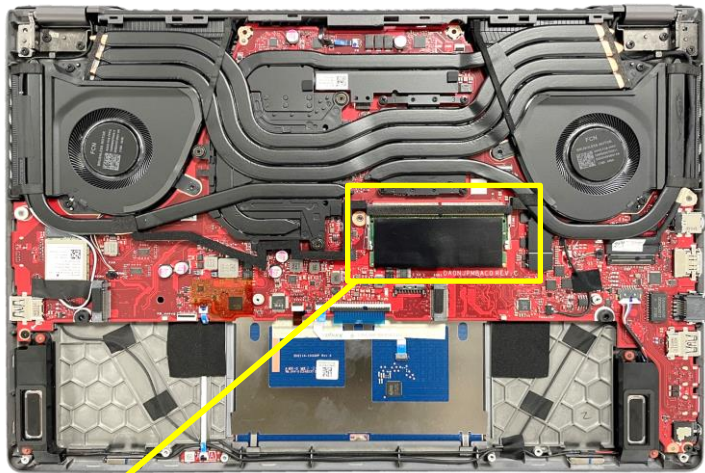
 Paste the ABSORBER on the new M.2 card (SSD) and assembly AL FOIL \*1pc, then paste the THERMAL PAD \*1pc.



**Disassembly Notice** Please be sure to pull out adapter and disconnect the battery.

Step 1 : Tear off the SODIMM ABSORBER from DDR.

Step 2 : Unlock and remove the RAM module \*1pc (yellow mark).



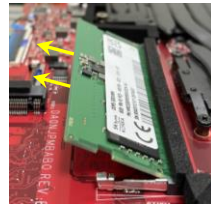
① Tear off



② Unlock

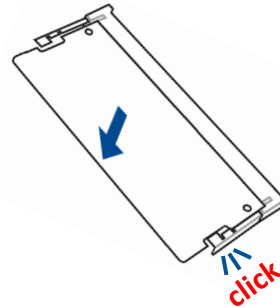
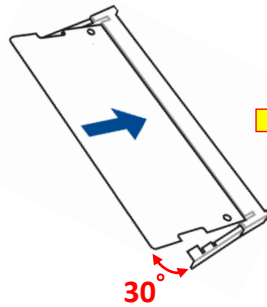


Remove



## Assembly Notice

After the MEMORY is assembled, please paste the SODIMM ABSORBER.



## Disassembly Notice

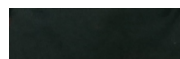
Please be sure to pull out adapter and disconnect the battery.

- Step 1 : Tear off the CABLE TAPE \*1pc.
- Step 2 : Disconnect the RF CABLE connector \*2pcs.
- Step 3 : Remove the screw \*1pc.
- Step 4 : Remove the WIFI CARD.

Screws	QTY	Spec	Torque (kgf-cm)
	1	M2*2L (4.5,0.5) (K) #1	2.0



1 Tear off



2 Disconnect



3 Remove

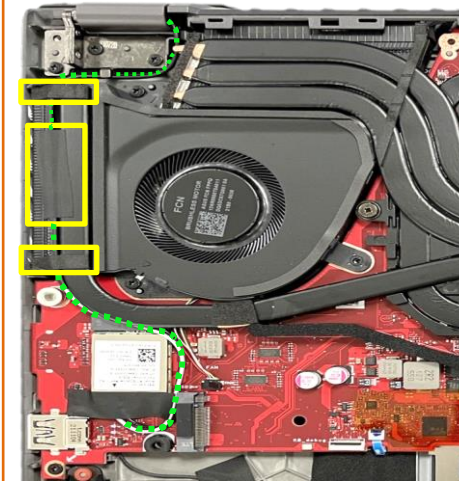


4 Remove

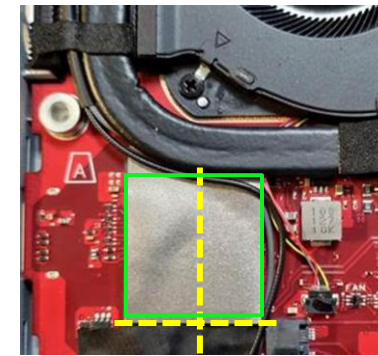


## Assembly

Please according to below mark to tidy up and assemble WIFI ANTENNA.



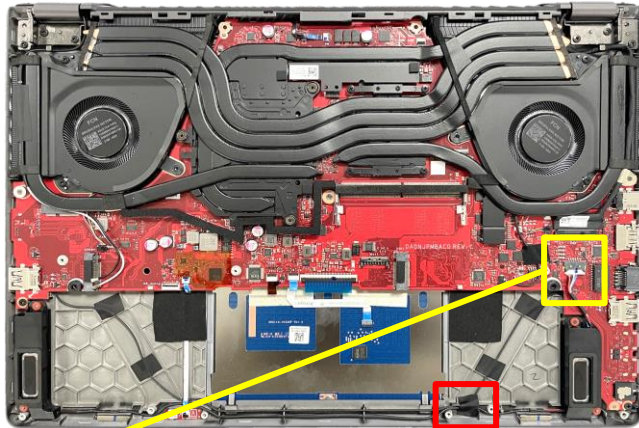
Please according to location below to paste WLAN ABSORBER.



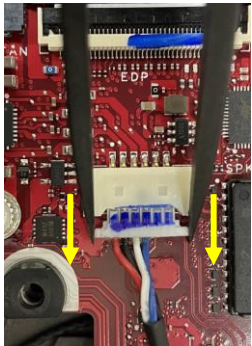
## Disassembly Notice

Please be sure to pull out adapter and disconnect the battery.

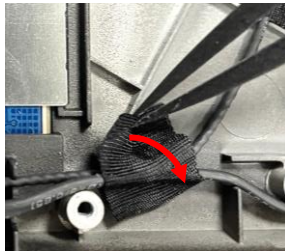
- Step 1 : Disconnect the WOOFER SPEAKER connector.
- Step 2 : Release the TWEETER TAPE \*1pc and keep it on the cable.
- Step 3 : Disconnect the HALL SENSOR FFC connector.
- Step 4 : Remove the WOOFER SPEAKER.



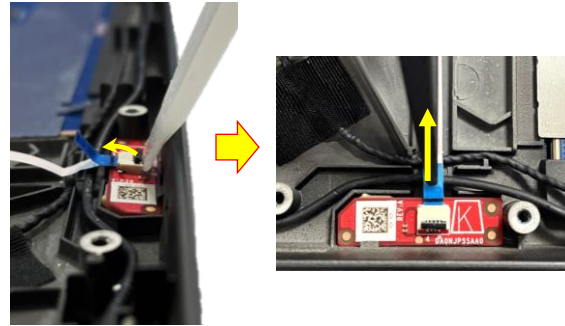
1 Disconnect



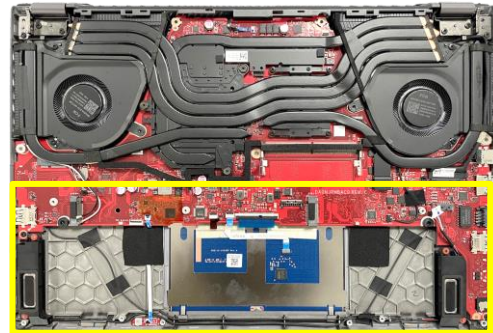
2 Release



3 Disconnect

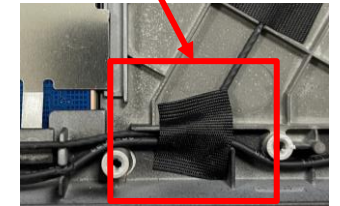
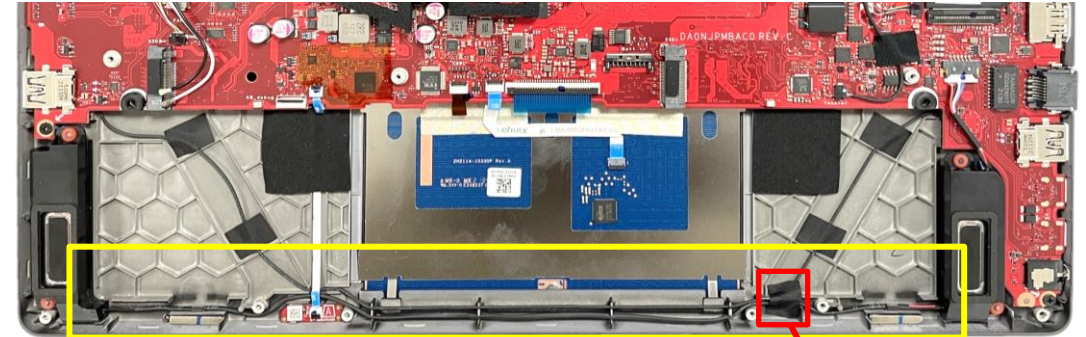


4 Remove



## Assembly Notice

For WOOFER SPEAKER assembly, please follow the mark below to tidy up cable and paste TWEETER TAPE \*1pc.



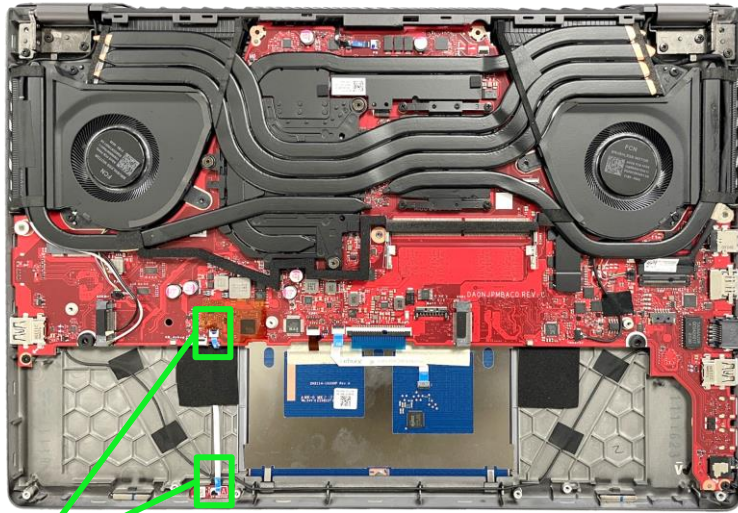
## Disassembly Notice

Please be sure to pull out adapter and disconnect the battery. 

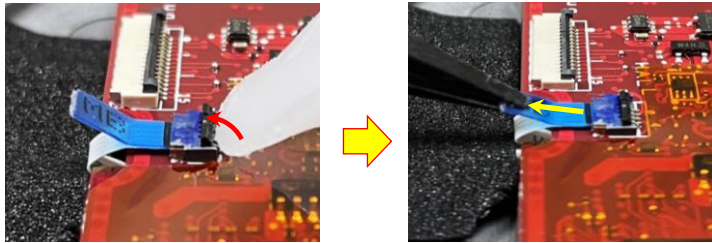
Step 1 : Disconnect the HALL SENSOR FFC connector.

Step 2 : Release the TP SPONGE and remove the HALL SENSOR FFC .

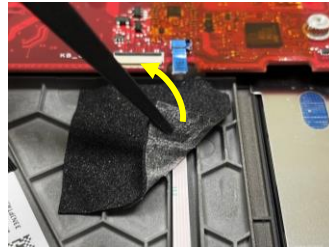
Step 3 : Remove the SENSOR BD.



1 Disconnect



2 Release




Remove



3 Remove



## Assembly Notice

 If FFC is damage during disassembly, please replace new one. Here are some samples of FFC damage:



 When assembly the SENSOR BD, please paste HALLSENSOR PCB ADH (1pc) as below.



## Disassembly Notice

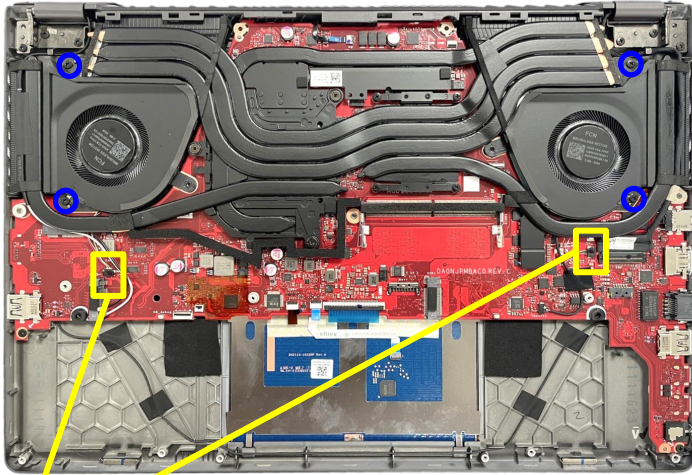
Please be sure to pull out adapter and disconnect the battery.

Step 1 : Disconnect the connectors \*2pcs (yellow mark).

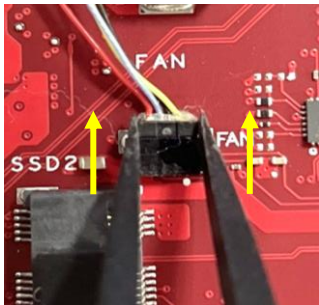
Step 2 : Remove the screws \*4pcs (blue mark).

Step 3 : Remove the FAN \*2pcs.

Screws	QTY	Spec	Torque (kgf-cm)
	4	M2*4.5L (4.5,0.8) (K) #1	2.0



1 Disconnect (Yellow mark)



2 Remove screws (Blue mark)

3 Remove FAN



(VGA FAN \*1pc)

(CPU FAN \*1pc)

## Assembly Notice

Please use the correct technique to take fans off to avoid getting out of shape.



## Disassembly Notice

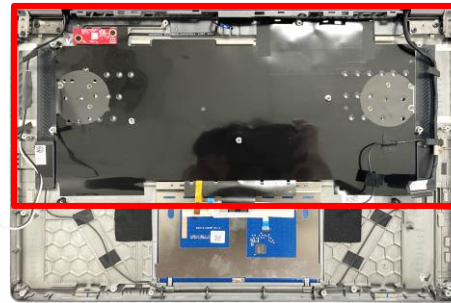
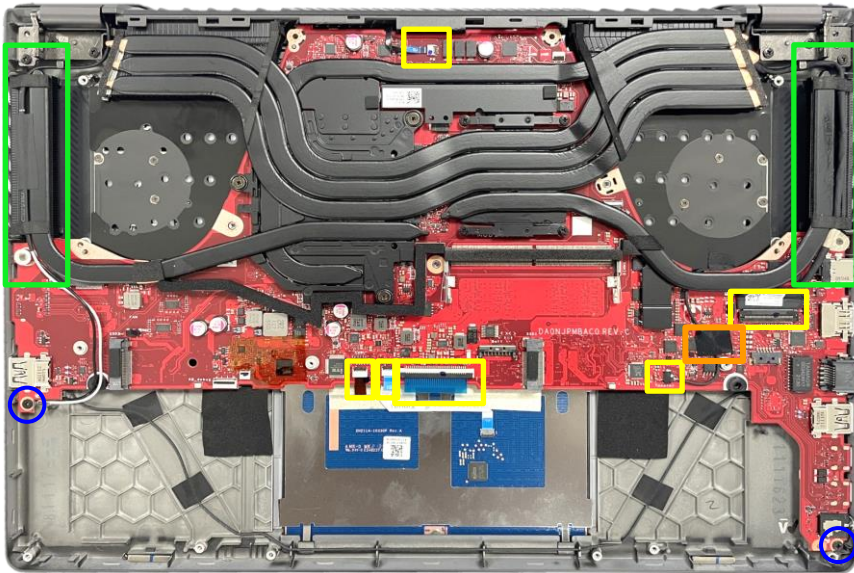
Please be sure to pull out adapter and disconnect the battery.

- Step 1 : Disconnect the connectors \*6pcs (yellow mark).
- Step 2 : Release the tapes and sponges (green area and orange mark) and keep them on the cable.
- Step 3 : Remove the screws \*2pcs (blue mark).
- Step 4 : Remove the MB and Thermal module together.

Screws	QTY	Spec	Torque (kgf-cm)
	2	M2*4.5L (4.5,0.8) (K) #1	2.0

- ① Disconnect (Yellow mark)
- ② Release tapes and sponges (Green area and orange mark)
- ③ Remove screws (Blue mark)

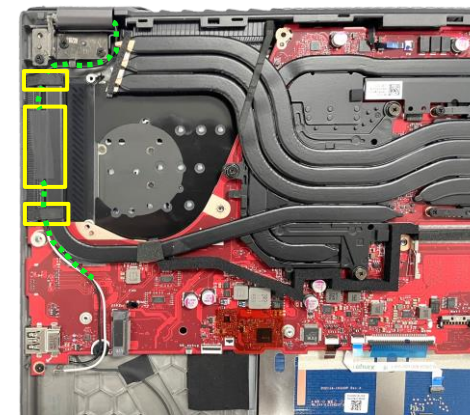
- ④ Remove module (MB+Thermal)



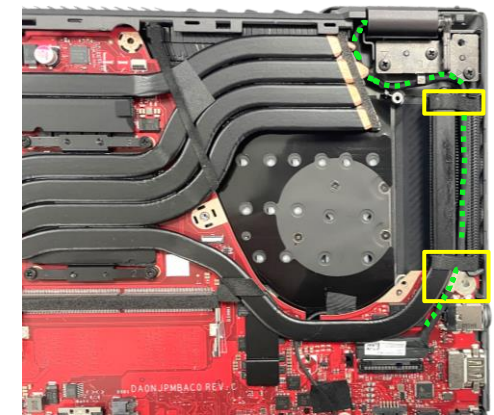
## Assembly Notice

Please follow the mark below to tidy up EDP cable and WIFI ANTENNA , then paste CABLE TAPE and sponges.

WIFI ANTENNA



EDP CABLE



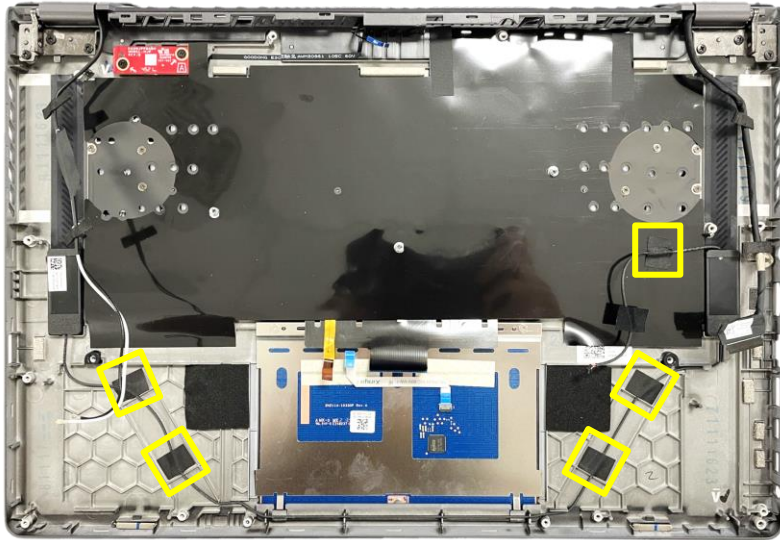


## Disassembly Notice

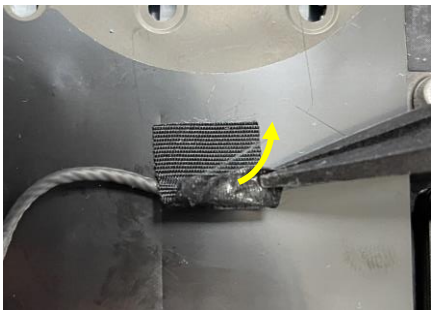
Please be sure to pull out adapter and disconnect the battery. 

Step 1 : Release the TWEETER TAPES \*5pcs (yellow mark) and keep them on the cable.

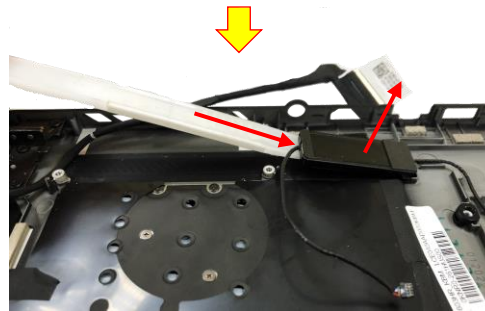
Step 2 : Remove the TWEETER SPEAKER \*1pc.



### 1 Release tapes (Yellow mark)

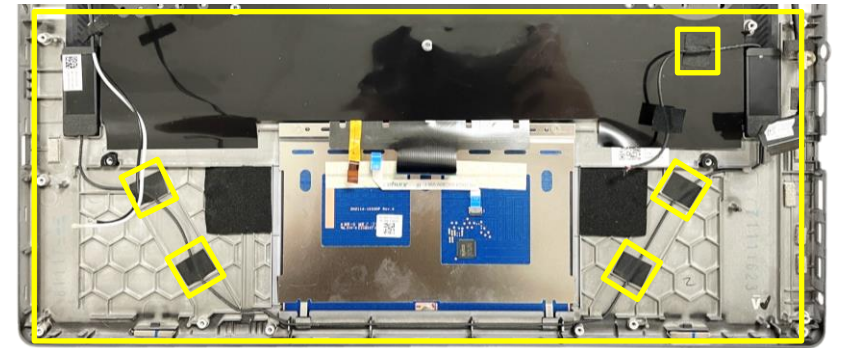



### 2 Remove

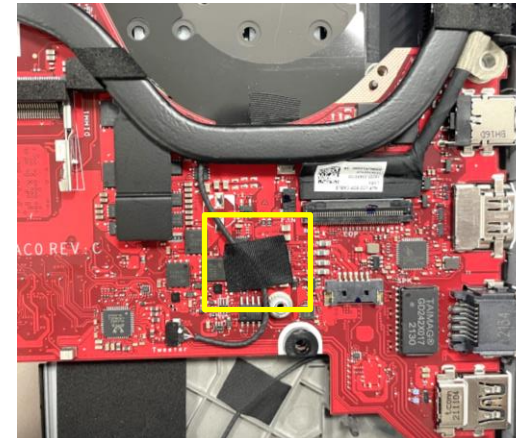


## Assembly Notice

 For TWEETER SPEAKER assembly, please follow the mark below to tidy up cable and paste TWEETER TAPES.



 For TWEETER SPEAKER assembly, please follow the mark below to paste TWEETER TAPE \*1pc.



## Disassembly Notice

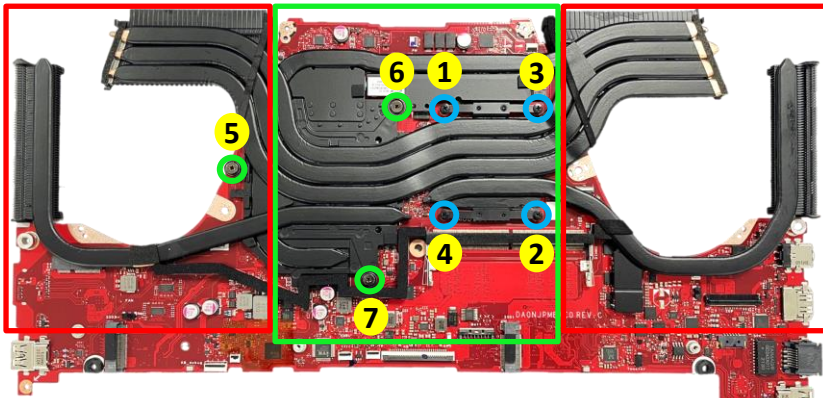
Please be sure to pull out adapter and disconnect the battery.

Step 1 : Follow the reverse screw numbers to remove screws \*4pcs(blue circle), and release screws \*3pcs(green circle).

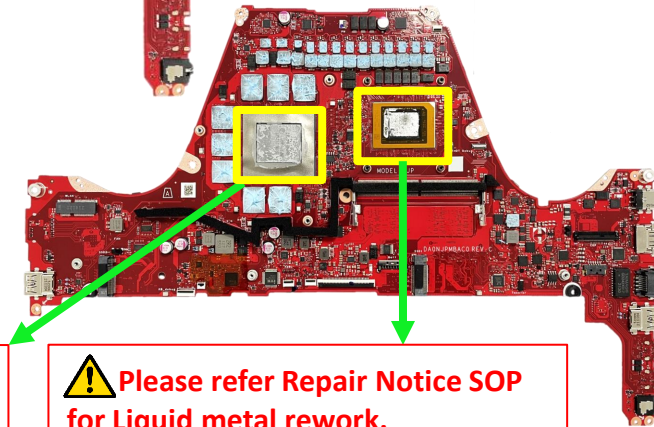
Step 2 : Remove the THERMAL MODULE from MB.

Recommend that the force point is at green block, and pull up thermal module to take it out. Do not pull up at red block and also notice the thermal pipe should not have deformation.

1



2 Remove



Only GA503RJ/GA503RJ GPU use Liquid metal, Please refer Repair Notice SOP for Liquid metal rework.

Please refer Repair Notice SOP for Liquid metal rework.

Screws	QTY	Spec	Torque (kgf-cm)
T	4	M2*4.5L (4.5,0.8) (K) #1	2.0
F	3	Retention Screw	2.0

## Assembly Notice

### Step-1

- THERMAL MODULE Location:[VRAM/CHOKE/MOS]  
Material: FCR-AS Grease

- MB Location:[GPU]

Material:

Main (GA500 Grease)

(Only GA503RJ/GA503RJ GPU use Liquid metal please refer step-2)

### Step-2

Please refer [Repair Notice SOP](#) for **Liquid metal** rework when reassemble thermal module before.

- MB Location:[CPU]

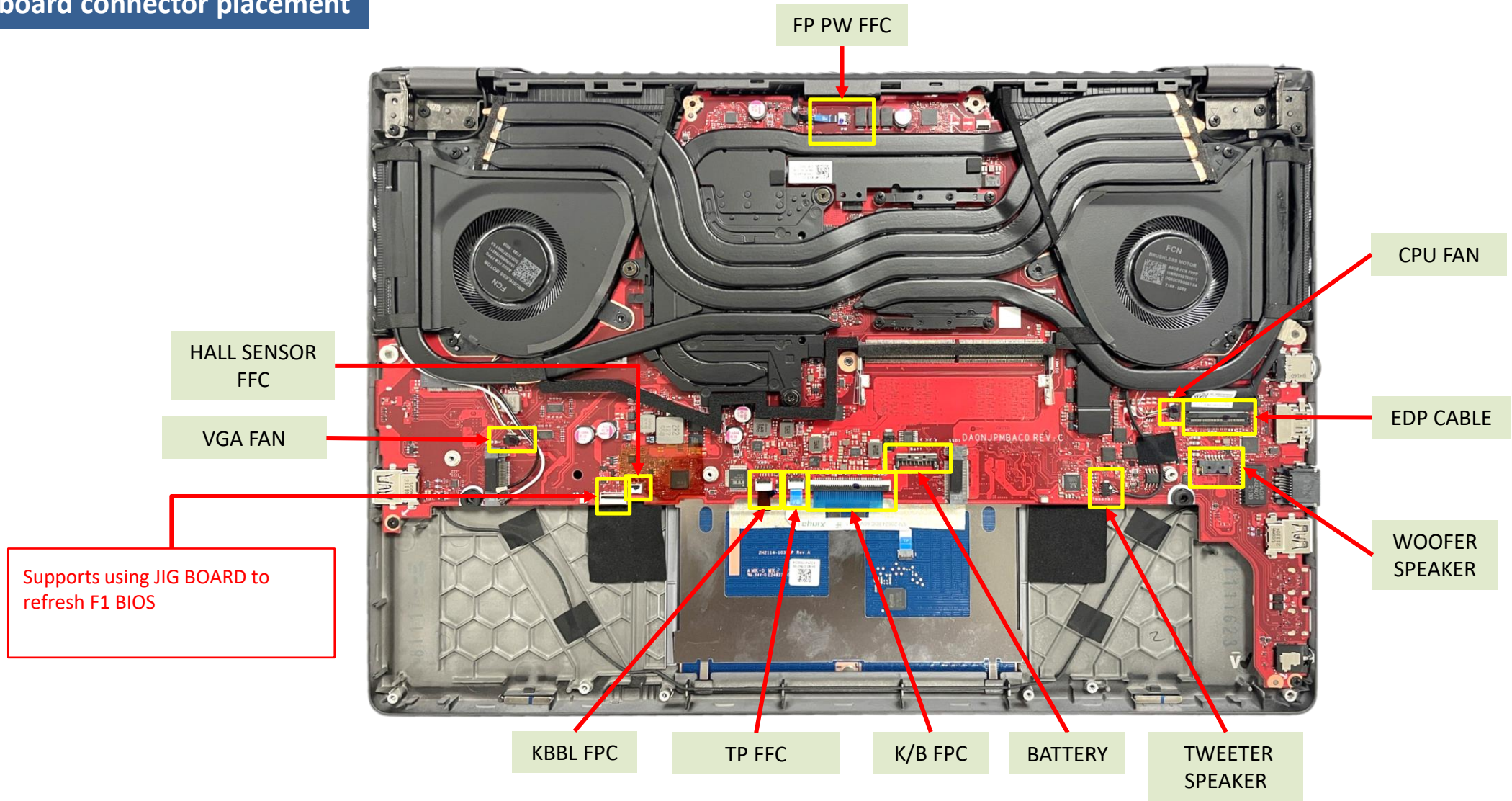
### Step-3

Please follow the screws numbers to lock screws \*8pcs.

**IMPORTANT!** Thermal paste, thermal pads, liquid metal, or other thermal interface materials must be thoroughly removed and replaced if this component is removed. Ensure that replacement materials are available before proceeding, or contact an authorized service center for assistance.

**WARNING!** The heat sink contains liquid metal and should only be removed by authorized service personnel. Significant damage may occur to motherboard components if the heat sink is improperly removed.

## Mainboard connector placement



## Materials on mainboard

Choose by GPU/VGA CHIP Model

GA503RX GPU BOT ABSORBER E3  
GA503RX GPU BOT ABSORBER E3

GA503RX GPU BOT ABSORBER E6  
GA503RX GPU BOT ABSORBER E6

GA503RX GPU BOT ABSORBER E8  
GA503RX GPU BOT ABSORBER E8

GA503RX MB BTM GN20 SPONGE  
GA503RX MB BTM GN20 SPONGE

GA503RX EC CHIP MYLAR  
GA503RX EC CHIP MYLAR

GA503QS BATTERY SUPPORT WASHER ASSY

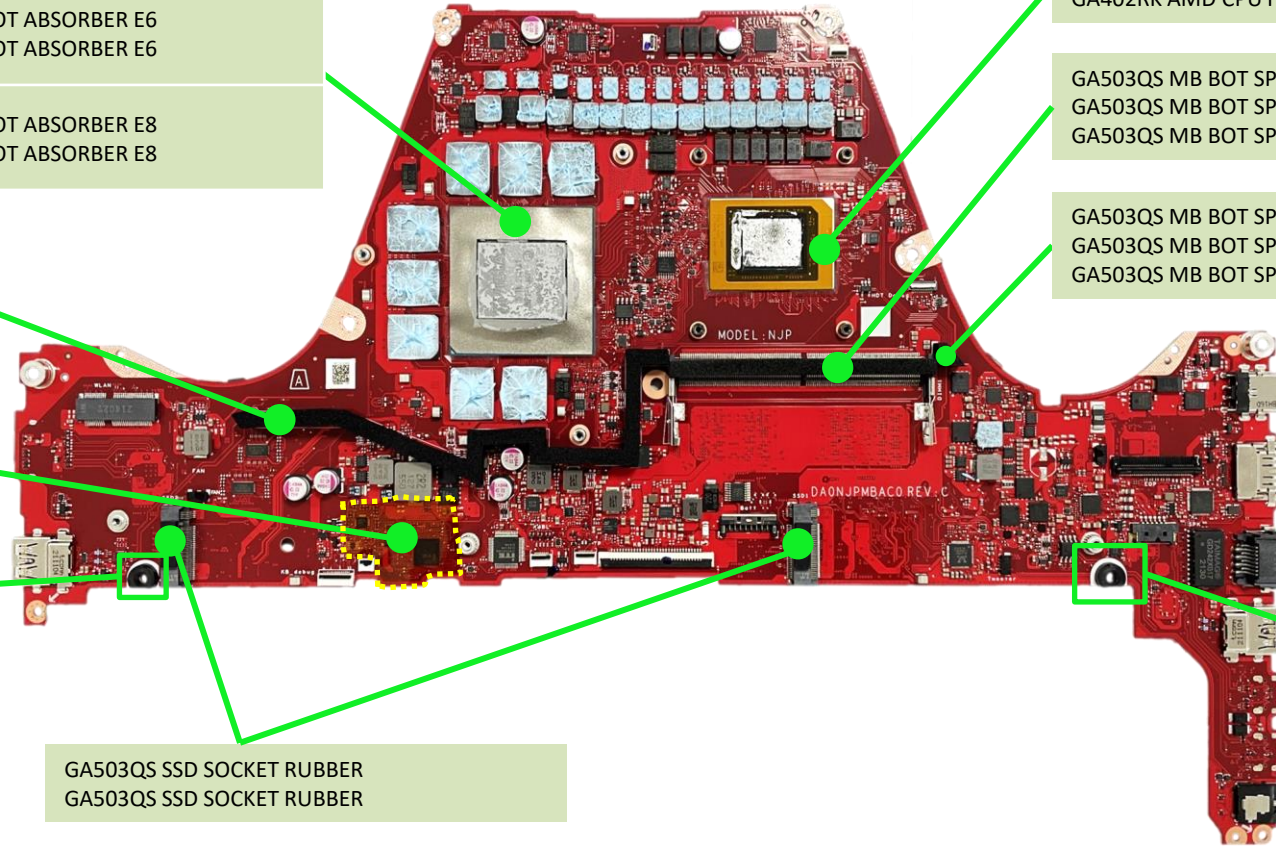
GA503QS SSD SOCKET RUBBER  
GA503QS SSD SOCKET RUBBER

GA402RK AMD CPU FP7 KAPTON  
GA402RK AMD CPU FP7 KAPTON

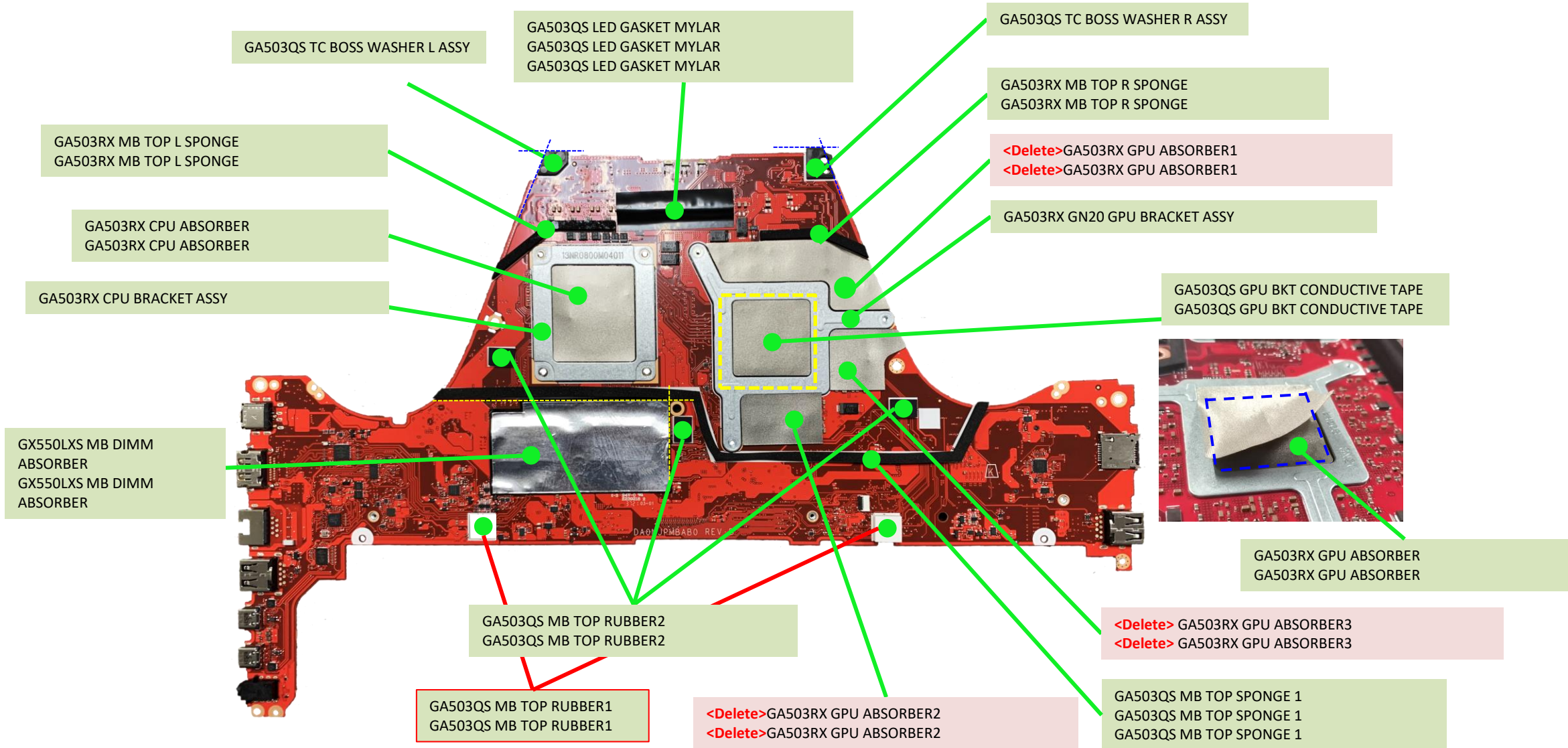
GA503QS MB BOT SPONGE 3  
GA503QS MB BOT SPONGE 3  
GA503QS MB BOT SPONGE 3

GA503QS MB BOT SPONGE 2  
GA503QS MB BOT SPONGE 2  
GA503QS MB BOT SPONGE 2

GA503QS BATTERY SUPPORT WASHER ASSY



## Materials on mainboard



## Disassembly Notice

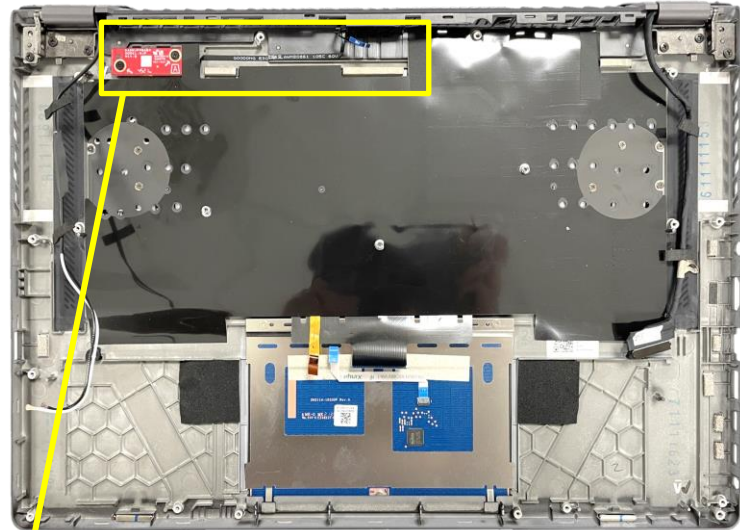
Please be sure to pull out adapter and disconnect the battery.

Step 1 : Remove the screws \*2pcs.

Step 2 : Release the MYLAR and remove the POWER\_SWITCH\_BD and FP PW FFC.

Step 3 : Disconnect the FP PW FFC connector and remove the FP PW FFC.

Step 4 : Remove the POWER KEY \*1pc.



### 1 Remove

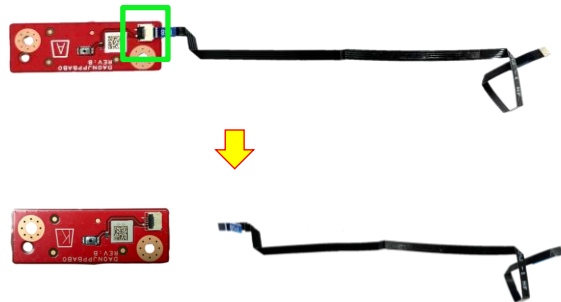


### 2 Release

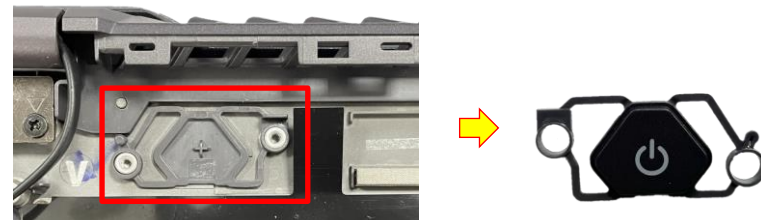


Remove POWER SWITCH\_BD and FP PW FFC

### 3 Disconnect



### 4 Remove



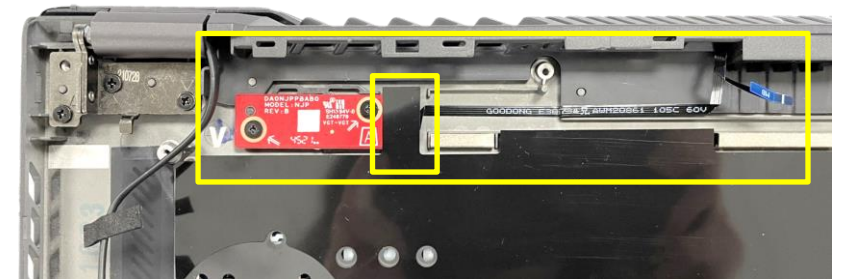
Screws	QTY	Spec	Torque (kgf-cm)
	2	M2*3L (K) B-ZN #1 NY	2.0

## Assembly Notice

If FFC is damage during disassembly, please replace new one. Here are some samples of FFC damage:



Please follow the yellow mark to tidy up FP PW FFC.



## Disassembly Notice

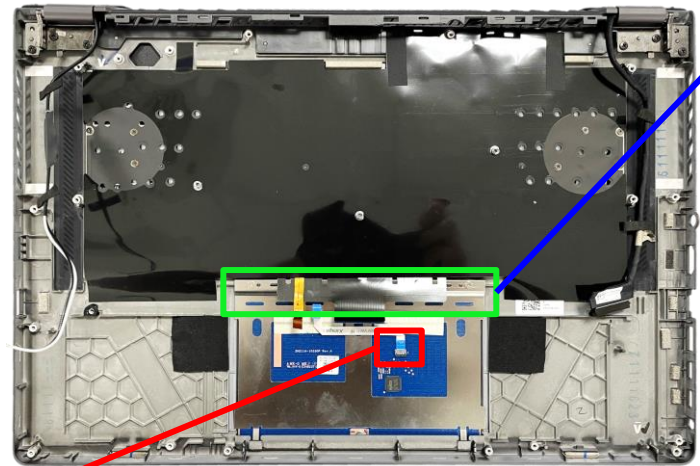
Please be sure to pull out adapter and disconnect the battery.

Step 1 : Disconnect the TP FFC connector (red mark) and remove the TP FFC.

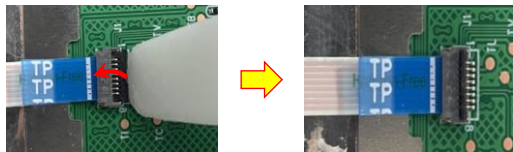
Step 2 : Release the KB FPC (green mark).

Step 3 : Remove the screws \*3pcs and take out the TOUCHPAD MODULE.

Screws	QTY	Spec	Torque (kgf-cm)
	3	M2*2.5L (4.5,0.5) (K) #1	2.0



1 Disconnect



Remove



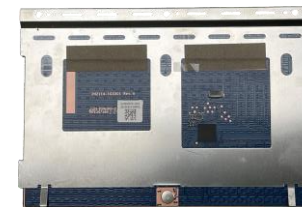
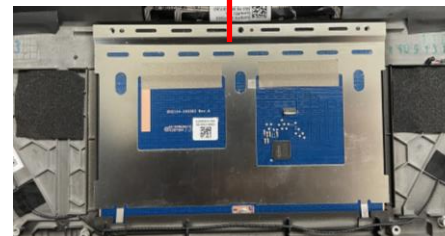
2 Release



3 Remove



Take out

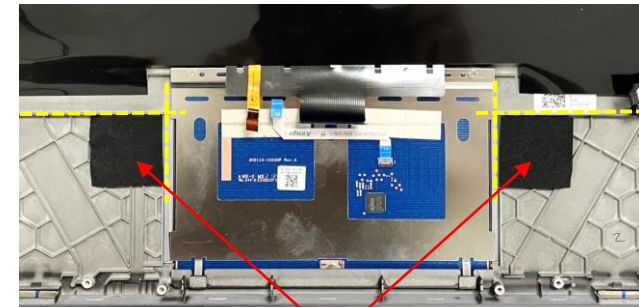


## Assembly Notice

If FFC is damage during disassembly, please replace new one. Here are some samples of FFC damage:



For TP SPONGE assembly, please follow below location to paste.



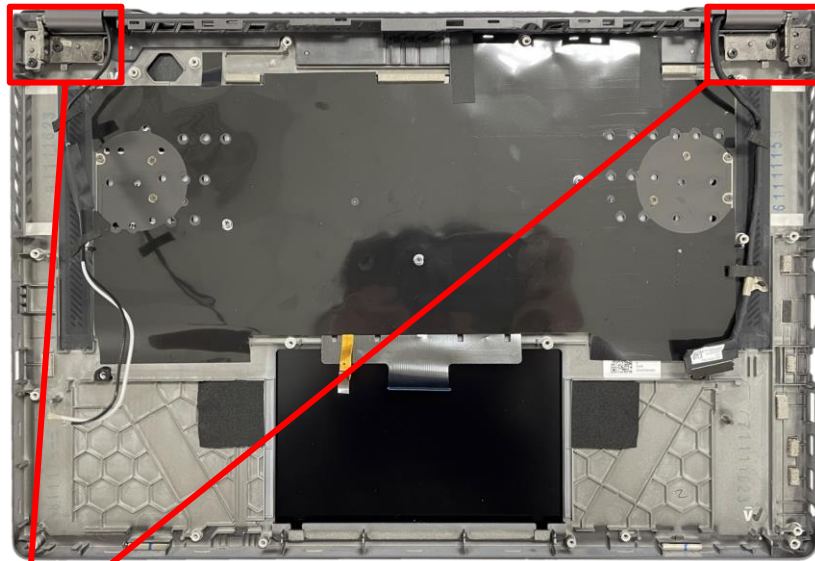
TP SPONGE

## Disassembly Notice

Please be sure to pull out adapter and disconnect the battery.

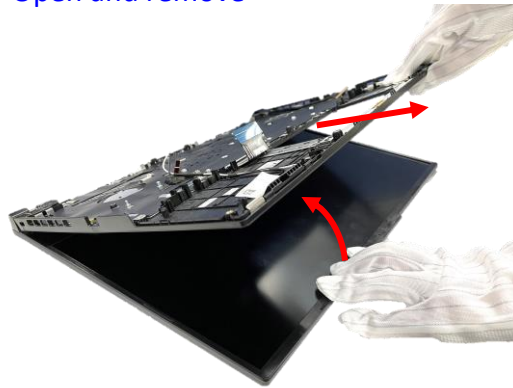
- Step 1 : Remove the screws \*6pcs (red mark).
- Step 2 : Open and remove the KEYBOARD MODULE.

Screws	QTY	Spec	Torque (kgf-cm)
	6	M2*4.5L (4.5,0.8) (K) #1	2.5



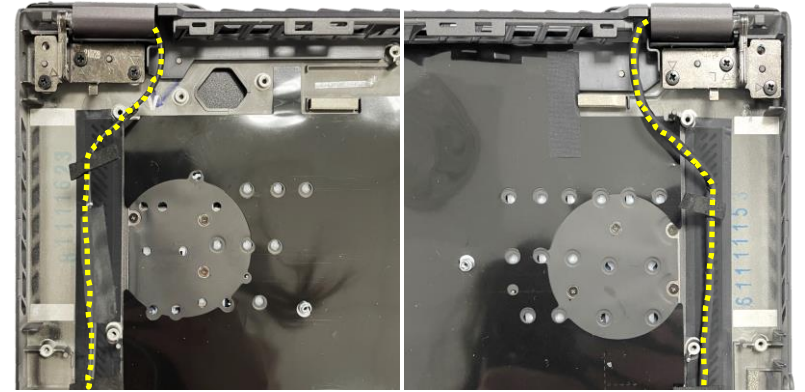
1 Remove

2 Open and remove



## Assembly Notice

Please follow the yellow mark to tidy up cable.



After Keyboard module assemble, please follow below location to paste the CD SNAP TAPE.



## Disassembly Notice

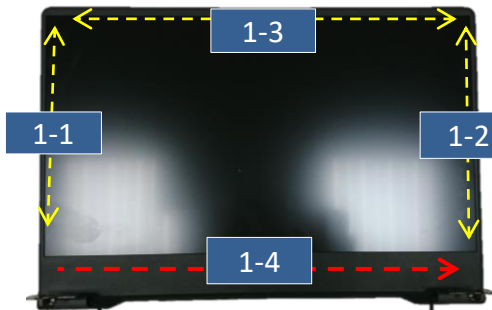
Please be sure to pull out adapter and disconnect the battery.

Step 1 : Remove the LCD BEZEL.

①



**Step 1-1~1-3**, Start from the middle area of each side of bezel, Using the forefinger to hold the outer edge firmly and the thumb flipping the bezel inner edge outward to release the hooks as indicated in the diagram shown. (It can be helpful, if holding the bezel outer edge firmly with forefinger.)



1-1~1-3

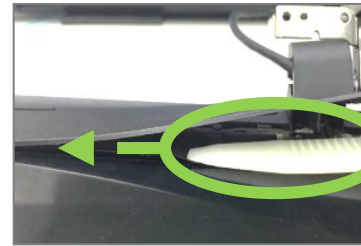
Thumb flipping the inner edge outward.



**Step 1-4**, Due to some tapes behind the lower edge of bezel, please using plastic blade to teardown the bezel.

Please follow the direction shown in the red arrow, to move plastic blade from left to right and peel the bezel away slowly. **While peeling, please move the blade in the parallel direction to the panel and pressing the black Mylar downward** (As circled in green) to ensure the black Mylar and the tape behind the bezel are well separated.

Please move blade slowly to separate the bezel away, and must press the black Mylar downward with panel parallel direction..



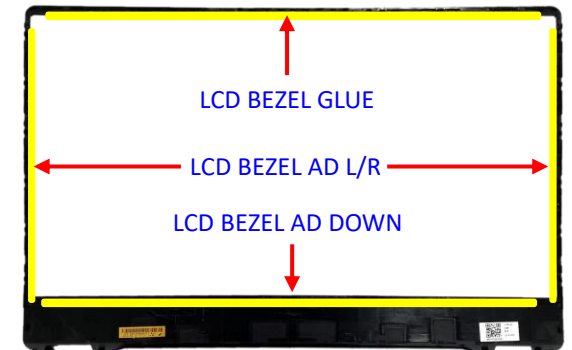
## Assembly Notice



### When reuse the LCD BEZEL:

Please paste new LCD BEZEL ADHESIVE before assembly BEZEL. (New LCD BEZEL already contains LCD BEZEL ADHESIVE \*4pcs)

Part Name
GA503RX LCD BEZEL AD DOWN
GA503RX LCD BEZEL AD L/R
GA503RX LCD BEZEL GLUE



## Disassembly Notice

Please be sure to pull out adapter and disconnect the battery.

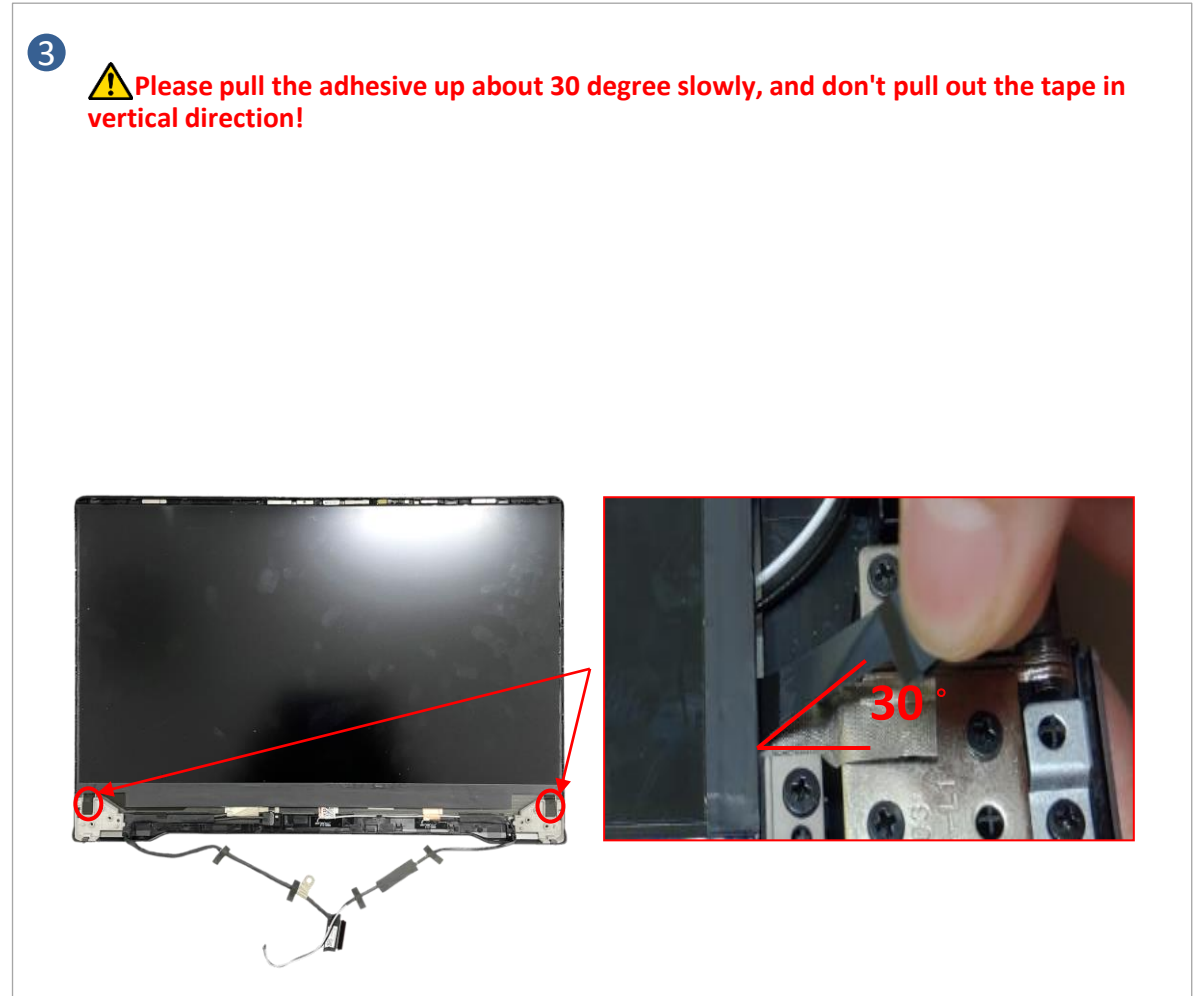
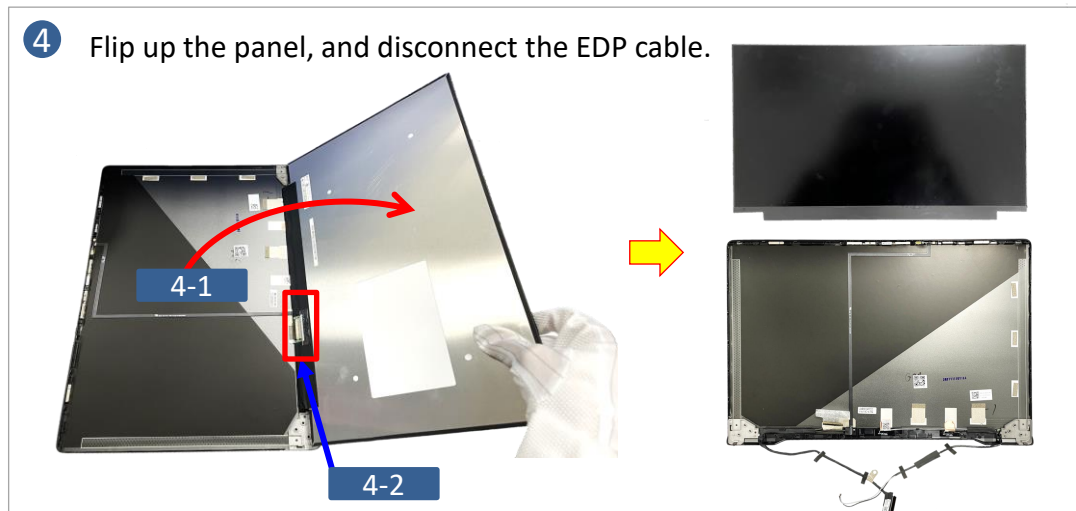
Step 1 : Remove the screws \*6pcs and remove the hinges \*2pcs.

Step 2 : Remove the screws \*4pcs and remove the hinge cap \*2pcs and hinge rubber \*2pcs.

Step 3 : Pull out the LCD adhesive \*2pcs.

Step 4 : Remove the LCD PANEL.

Screws	QTY	Spec	Torque (kgf-cm)
	6	M2.5*2L (7.0,0.5) (K) #1	3.0
	4	M1.4*2.5L(3.4,0.5) (K)#0	1.5



**Assembly Notice** Please be sure to pull out adapter and disconnect the battery.

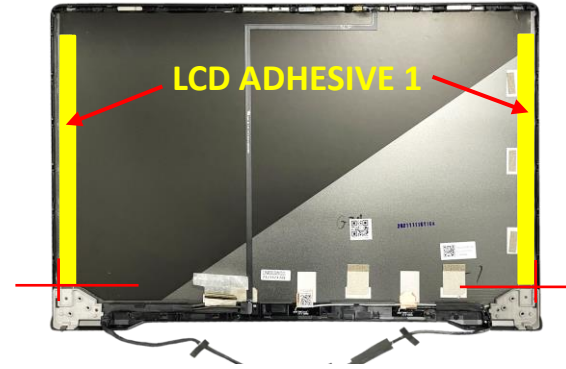
**A** When reuse the LCD PANEL or BEZEL:

Please use the fingertip to clean the residual glue on PANEL or BEZEL.



**B** When reuse the LCD COVER:

Please paste new LCD ADHESIVE \*2pcs.  
(New LCD COVER already contains LCD ADHESIVE \*2pcs)



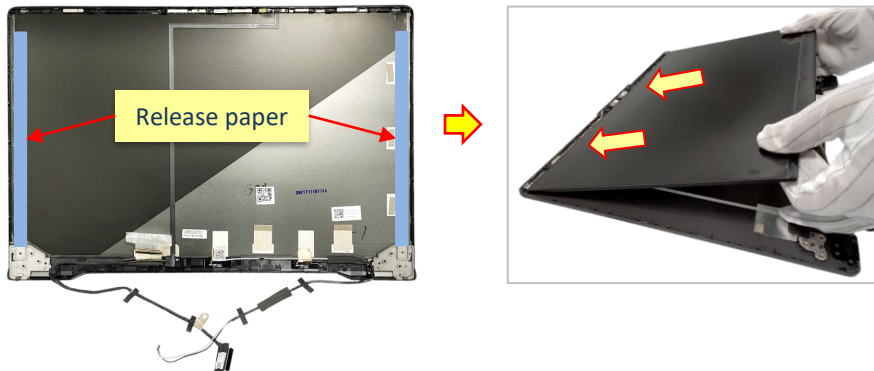
**C** When assembly the LCD PANEL:

Step 1 : Remove release paper of LCD Adhesive \*2pcs.

Step 2 : Assembly and align the LCD to the upper side of the LCD Cover.

**C-1** Remove

**C-2** Align



## Disassembly Notice

Please be sure to pull out adapter and disconnect the battery.

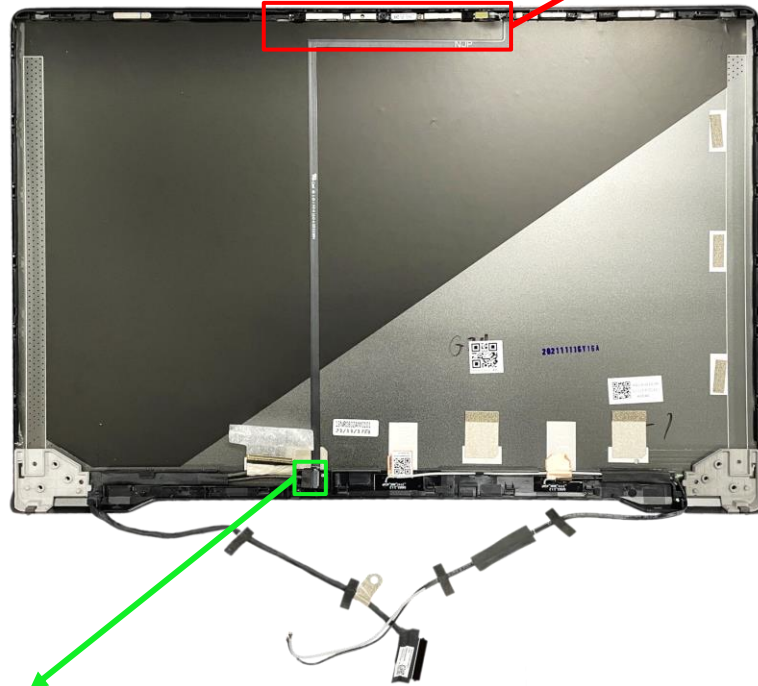
Step 1 : Disconnect (green mark) and remove the EDP cable.

Step 2 : Disconnect the MIC FPC connector (red mark).

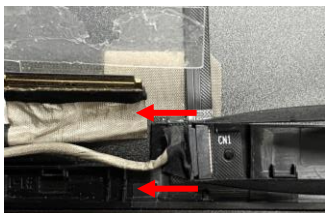
Step 3 : Remove the MIC FPC \*1pc.

Step 4 : Remove the CAMERA.

Step 5 : Remove the MIC RUBBER \*2pcs.



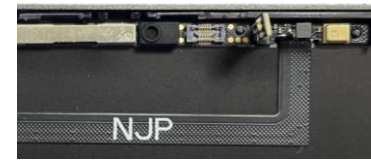
1 Disconnect



Remove



2 Disconnect



3 Remove



4 Remove



5 Remove

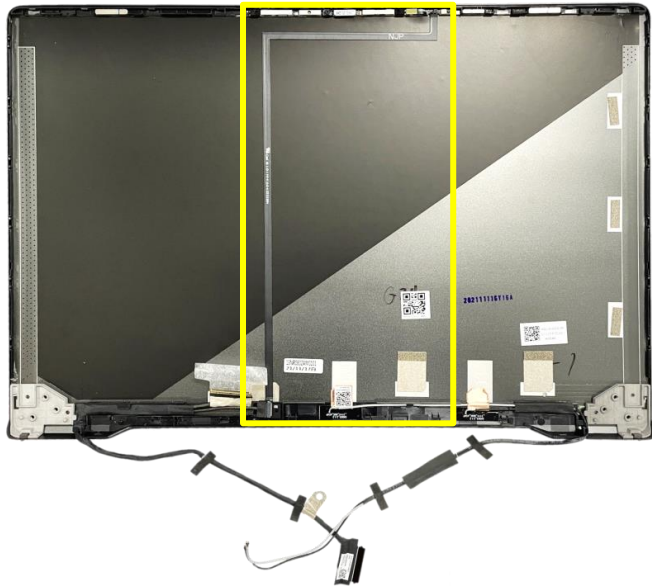


MIC RUBBER \*2pcs



**Assembly Notice** Please be sure to pull out adapter and disconnect the battery. 

 For MIC FPC assembly, please follow the yellow mark below to tidy up cable.



 Please follow the green mark to tidy up EDP cable and WIFI ANTENNA A1&A2.

