

# **ASUS ROG Zephyrus M16(GU603H) series**

## **Service Guide**

## COPYRIGHT INFORMATION

No part of this manual, including the products and software described in it, may be reproduced, transmitted, transcribed, stored in a retrieval system, or translated into any language in any form or by any means, except documentation kept by the purchaser for backup purposes, without the express written permission of ASUSTeK COMPUTER INC. ("ASUS").

ASUS PROVIDES THIS MANUAL "AS IS" WITHOUT WARRANTY OF ANY KIND, EITHER EXPRESS OR IMPLIED, INCLUDING BUT NOT LIMITED TO THE IMPLIED WARRANTIES OR CONDITIONS OF MERCHANTABILITY OR FITNESS FOR A PARTICULAR PURPOSE. IN NO EVENT SHALL ASUS, ITS DIRECTORS, OFFICERS, EMPLOYEES OR AGENTS BE LIABLE FOR ANY INDIRECT, SPECIAL, INCIDENTAL, OR CONSEQUENTIAL DAMAGES (INCLUDING DAMAGES FOR LOSS OF PROFITS, LOSS OF BUSINESS, LOSS OF USE OR DATA, INTERRUPTION OF BUSINESS AND THE LIKE), EVEN IF ASUS HAS BEEN ADVISED OF THE POSSIBILITY OF SUCH DAMAGES ARISING FROM ANY DEFECT OR ERROR IN THIS MANUAL OR PRODUCT.

Products and corporate names appearing in this manual may or may not be registered trademarks or copyrights of their respective companies, and are used only for identification or explanation and to the owners' benefit, without intent to infringe.

SPECIFICATIONS AND INFORMATION CONTAINED IN THIS MANUAL ARE FURNISHED FOR INFORMATIONAL USE ONLY, AND ARE SUBJECT TO CHANGE AT ANY TIME WITHOUT NOTICE, AND SHOULD NOT BE CONSTRUED AS A COMMITMENT BY ASUS. ASUS ASSUMES NO RESPONSIBILITY OR LIABILITY FOR ANY ERRORS OR INACCURACIES THAT MAY APPEAR IN THIS MANUAL, INCLUDING THE PRODUCTS AND SOFTWARE DESCRIBED IN IT.

Copyright © 2024 ASUSTeK COMPUTER INC. All Rights Reserved.

## LIMITATION OF LIABILITY

Circumstances may arise where because of a default on ASUS' part or other liability, you are entitled to recover damages from ASUS. In each such instance, regardless of the basis on which you are entitled to claim damages from ASUS, ASUS is liable for no more than damages for bodily injury (including death) and damage to real property and tangible personal property; or any other actual and direct damages resulted from omission or failure of performing legal duties under this Warranty Statement, up to the listed contract price of each product.

ASUS will only be responsible for or indemnify you for loss, damages or claims based in contract, tort or infringement under this Warranty Statement.

This limit also applies to ASUS' suppliers and its reseller. It is the maximum for which ASUS, its suppliers, and your reseller are collectively responsible.

UNDER NO CIRCUMSTANCES IS ASUS LIABLE FOR ANY OF THE FOLLOWING: (1) THIRD-PARTY CLAIMS AGAINST YOU FOR DAMAGES; (2) LOSS OF, OR DAMAGE TO, YOUR RECORDS OR DATA; OR (3) SPECIAL, INCIDENTAL, OR INDIRECT DAMAGES OR FOR ANY ECONOMIC CONSEQUENTIAL DAMAGES (INCLUDING LOST PROFITS OR SAVINGS), EVEN IF ASUS, ITS SUPPLIERS OR YOUR RESELLER IS INFORMED OF THEIR POSSIBILITY.

## Disclaimer

ASUS is not responsible for direct, indirect, intentional or unintentional damages resulting from improper installation and operation.

## Safety precautions

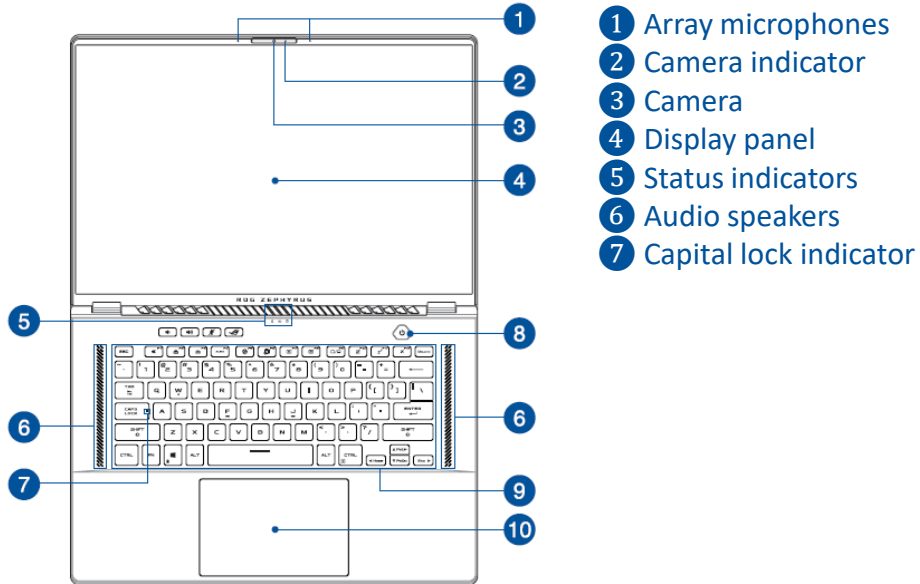
- Keep liquids or moisture away from your Notebook PC before installing or removing any components.
- Ensure to place your Notebook PC on a stable surface before installing or removing any components.
- Detach the clip or flap before removing the signal cables to prevent damage.
- Disconnect the power plug by pulling the plug evenly to avoid damage. Ensure to connect the signal cables in the correct orientation.
- Disconnect all power cables and remove the battery pack (if applicable) before cleaning your Notebook PC with liquid detergent to avoid risk of electric shock.
- Disconnect all power cables and remove the battery pack (if applicable) before installing or removing any components. Ensure to read and follow the instructions in the manual.
- Before handling components, use a grounded wrist strap or touch a safely grounded object to avoid damaging them due to static electricity.
- Keep liquids or moisture away from your Notebook PC to avoid short circuits.
- Hold components by the edges to avoid touching the ICs.
- Ensure to properly install all the components before connecting the AC power.
- Do not use power adapters or batteries from other devices to reduce the risk of injury to persons due to fire or explosion. Use only certified power adapters or batteries supplied by the manufacturer or authorized retailers.
- Ensure to install the correct screw models on your Notebook PC to prevent damage.

- [Service Overview](#)
- [ASUS ROG Zephyrus M16\(GU603H\) Overview](#)
- [Components Top View](#)
- [Components Bottom View](#)
- [Repair Overview](#)
- [Appropriate Tools](#)
- [Keyparts and Related Parts](#)
- Disassembly steps :
  - [BOTTOM CASE](#)
  - [BATTERY](#)
  - [SSD](#)
  - [DDR](#)
  - [WIFI CARD](#)
  - [HALL SENSOR BD](#)
  - [WOOFER SPEAKER](#)
  - [THERMAL MODULE](#)
  - [FAN](#)
  - [MAIN BOARD](#)
  - [FRINGE PRINT MODULE \(Power key\)](#)
  - [TWEETER SPEAKER](#)
  - [TOUCHPAD MODULE](#)
  - [KEYBOARD MODULE](#)
  - [LCD BEZEL](#)
  - [LCD PANEL](#)
  - [LCD COVER MODULE](#)

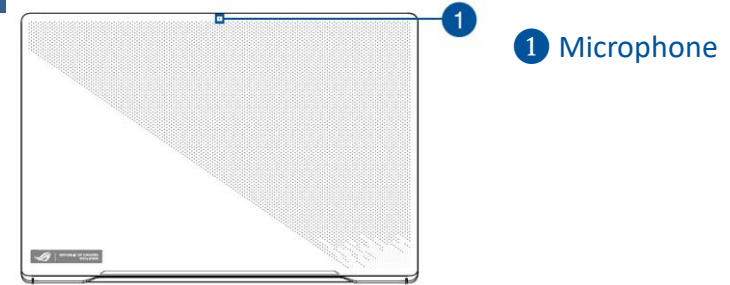
- **Carefully read through this Service Guide for a look at various components of the device before performing any service and repairs.**
- To provide the best service, we have provided the below information for technicians from distributors and resellers to perform the complete device disassembly and assembly. Before performing the procedures, please be sure to read through the overview in this service guide for component overview to avoid any unwarranted damages to the device hardware.
- The following contents include all part numbers mentioned in the service guide are **used for reference only**, if you need the exact part number for ordering, please refer to the OrderBook.
- Due to sales policy difference, the components might have different specifications on the same series product, please refer to E-manual by model.

Due to sales policy difference, the components may have different specifications on the same model. If you have any operational issues, please contact the service hotline.

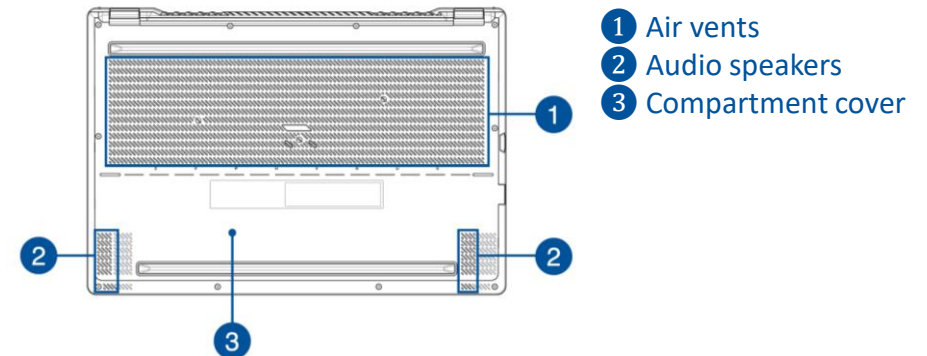
## Top View



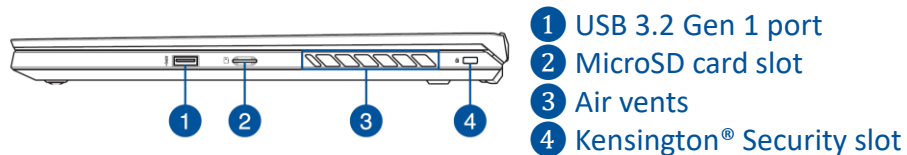
## Cover View



## Bottom View



## Right View



## Left View



◆ LCD COVER MODULE



◆ LCD BEZEL



◆ LCD Panel (16")



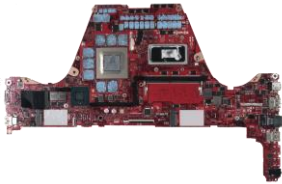
◆ BASE CASE



◆ KEYBOARD MODULE



◆ MAIN BOARD



◆ THERMAL MODULE ASSY



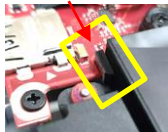
◆ GPU FAN



◆ CPU FAN



◆ BATTERY RIB RUBBER



◆ FP TOUCH



◆ POWER KEY RUBBER



◆ POWER KEY HOLDER



◆ BATTERY



◆ TOUCHPAD MODULE



◆ HINGE L/R



◆ HINGE CAP L/R



◆ HINGE DECO RUBBER L/R



◆ DDR



◆ WIFI CARD



◆ SSD



◆ HALL SENSOR BD



◆ EDP CABLE



◆ BATTERY CABLE



◆ SCREW RUBBER



◆ CAMERA



◆ TP FFC (8P 0.5 L76mm)



◆ MIC FPC



◆ HALL SENSOR FFC (4P 0.5 L89mm)



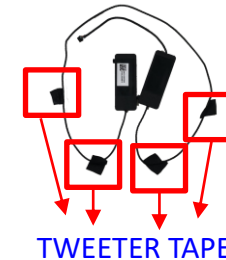
◆ FP PW FFC (10P 0.5 L77mm)



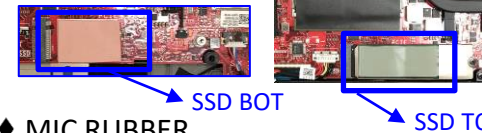
◆ WOOFER SPEAKER



◆ TWEETER SPEAKER



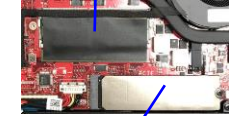
◆ SSD THERMAL PAD



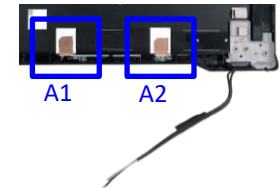
◆ MIC RUBBER



◆ DIMM COVER MYLAR



◆ SSD ABSORBER



◆ TP SPONGE

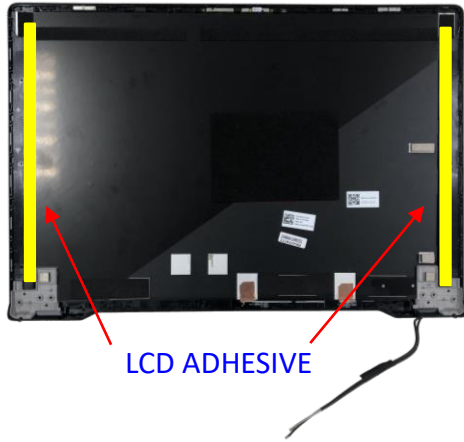


◆ TP HOLDER MYLAR

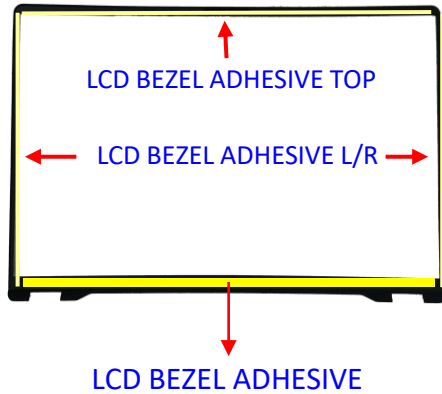
◆ WIFI MODULE MYLAR



◆ LCD COVER MODULE



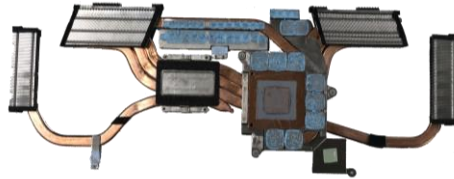
◆ LCD BEZEL



◆ MAIN BOARD



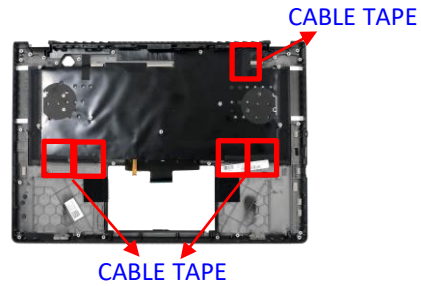
◆ THERMAL MODULE ASSY



◆ BASE CASE



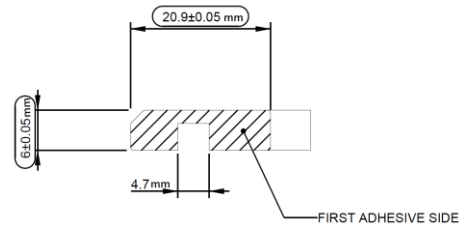
◆ KEYBOARD MODULE



◆ HALLSENSOR BD



◆ HALL SENSOR PCB ADH



◆ LCD Panel



◆ LCD CU FOIL



◆ GRAPHITE

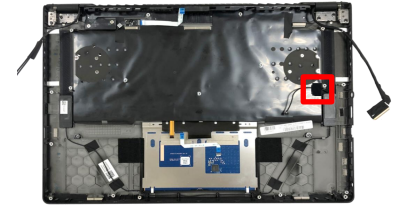


◆ MIC FPC GND TAPE



◆ MIC FPC GND SPONGE

◆ TWEETER TAPE



◆ FP TOUCH



◆ CABLE SPONGE





This chapter describes disassembly and assembly (Assemble document please look up from the last page), please follow the information provided in this section to perform the complete disassembly procedure.

## ◆ Precautions:

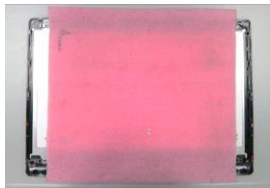
Before you perform any service or repair on the notebook, please pay special attention to the cautions prevent any damages to the notebook.

1. Be sure that the notebook is powered down.
2. Before disassembling any part, please disconnect all power source. ex: AC plug/Battery connector/Power protect screw etc.

3. Remove all rings, watches and any other metal objects from your hands.



4. Always wear a ground strap on your hand to protect the notebook from static discharge.
5. Please refer to “ANSI ESD S20.20” about ESD protection measure.
6. Put the disassembled parts in the functional PE BAG to avoid any damages of the A/B/C/D part.



7. The maintenance environment temperature is 20-30 °C and humidity is 40% - 70%.
8. To avoid scratching on the surface of machine; please use anti-static and soft materials to put on desk in repair environment as below photo.



9. Screw Appearance Criteria:

If the screws have the following damaged appearance, please do not use.

- a. Shape deformed.
- b. Damaged head – unable to drive in or the stripped screw.
- c. Damaged unable to securely tighten.
- d. Paint scratched off.
- e. Rusty



10. The following chapter includes all part numbers mentioned in service guide are used for reference only, actual part name depends on different SKU, if you need the exact part number for ordering, please refer to the Orderbook.
11. Due to sales policy difference, the components may have different specifications on the same model. Please note that all pictures and components shown on Service Guide are for disassembly/assembly description purpose only, so please refer to the actual product for disassemble/assemble.

Please prepare and select the appropriate tools to disassemble/assemble for the ASUS ROG Zephyrus M16 (GU603H) series notebook.

## ◆ Screwdriver

Please accord to different screw specification to choose different screwdriver and head.

#1



## ◆ Plastic Blade



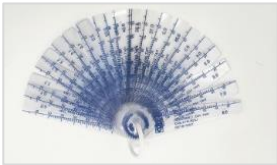
## ◆ Plastic Tweezers

Use a pair of tweezers to remove/insert/tidy cables.



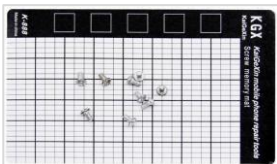
## ◆ Thickness Gauge

Thickness compass specification 0.05mm-1.5mm. Use it to measure the gap.



## ◆ Magnetism Board

Suggest local buy magnetism board to place screw, avoid mix different type screw to cause assembly damage.



## ◆ Alcohol 95%



## ◆ Glove



## ◆ Dust-free Cloth



## ◆ Thermal Pad PTM7958



## ◆ PLASTIC CARD T=0.35mm

## ◆ FCR-AS Thermal Grease



## ◆ PLASTIC PICK T=0.5mm



## ◆ NB LCD MYLAR \*4pcs

Use it to align panel position.

LCD MYLAR can be reused 5 to 10 times, please stick it on the plastic bag save after used, and repeatedly use until lose stickiness.



Please prepare and select the appropriate tools to disassemble/assemble for the ASUS ROG Zephyrus M16 (GU603H) series notebook.

1



3



5



7



2



4



6



**⚠ Warning! When the tool is with Liquid Metal residue, please clean tools with dust free cloth and 95% alcohol.**









Tooling Type	Item	Part Name	Memo
For Liquid metal use	1	Silicone scraping pen	
	2	Conductionaut 1g (Liquid Metal)	▪Please store it in the environment of 10 ~ 40 °C. ▪Please keep cover tightly closed until ready for next time use. ▪Shipping category : Dangerous Goods.
	3	Intel CPU TGL steel plate	
	4	Stainless steel plate (60mm*20mm*0.2t)	
For Clean use	5	Dust-free cotton swab//class 100 (100pcs)	
	6	95% alcohol	
	7	Dust-free cloth	

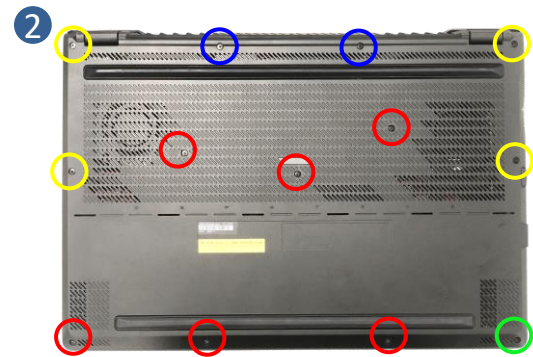
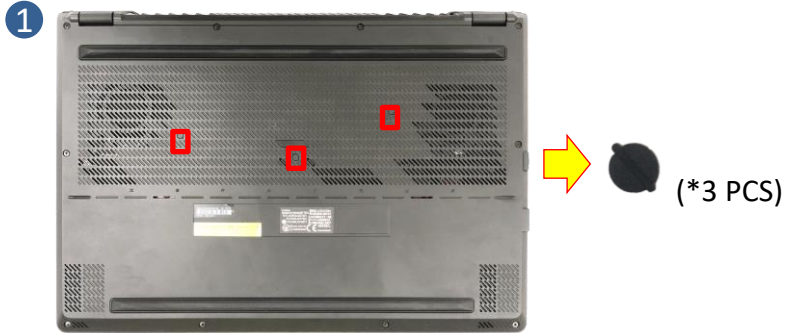
## Disassembly Notice

Step 1 : Remove rubbers \*3pcs.

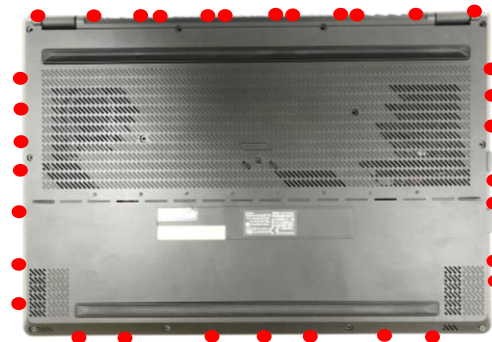
Step 2 : Remove screws \*12pcs.

Step 3 : Use plastic blade to pry the bottom case.

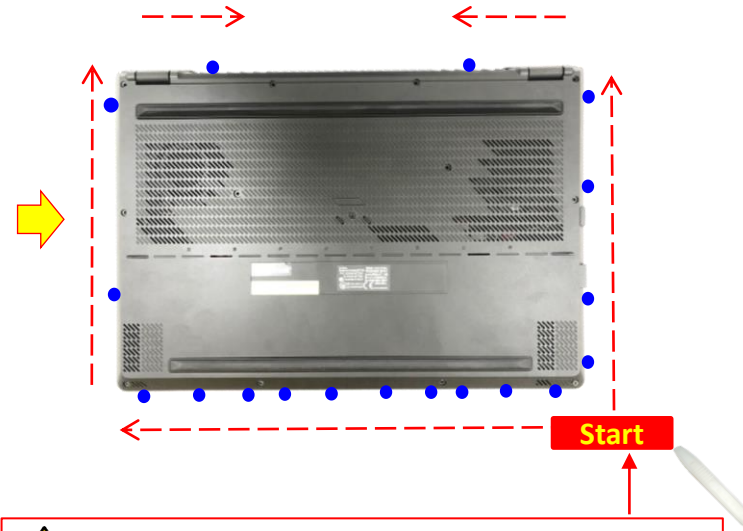
Screws	QTY	Spec	Torque (kgf-cm)
 	2	M2*11.5L (4.5,0.8) (K) #1	2.0±0.2
 	6	M2*8L(4.5,0.8) (K)#1	2.0±0.2
 	4	M2*11L (4.5,0.8) (K) #1	2.0±0.2
 	1	Retention Screw	2.0±0.2



⚠ The screw is unable to remove from bottom case, so please always loosen it last, and lock it at first.



⚠ To avoid the bottom case hook, don't insert plastic blade in each red circle.



⚠ Please follow above arrow direction with using plastic blade to pry bottom case in each blue circle location.(To avoid the bottom case hook, please prying at each blue circle location.)





## Disassembly Notice

Please be sure to pull out adapter and disconnect the battery. 





 Before disassembly battery connector, please be sure to pull out adapter and disconnect the battery more than ten seconds in order to IC damage.

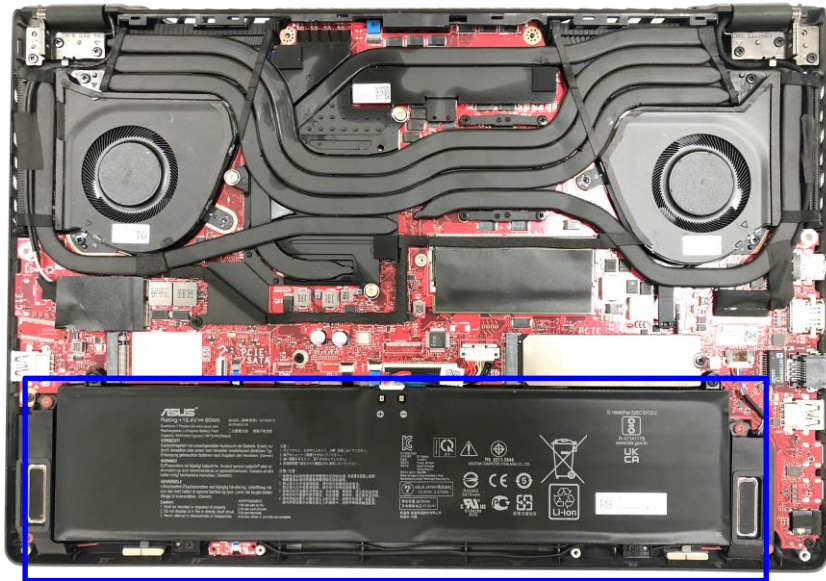
Step 1 : Disconnect the battery connector.

Step 2 : Remove screws \*4pcs.

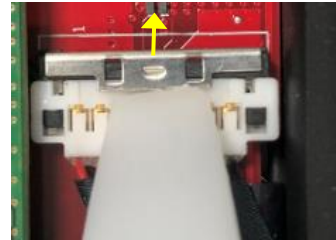
Step 3 : Remove BATTERY.

Step 4 : Disconnect battery cable.

Screws	QTY	Spec	Torque(kgf-cm)
 	2	M2*8L(4.5,0.8) (K)#1	2.0±0.2
 	2	M2*4.5L (4.5,0.8) (K) #1	2.0±0.2



## 1 Disconnect




## 2 Unscrew

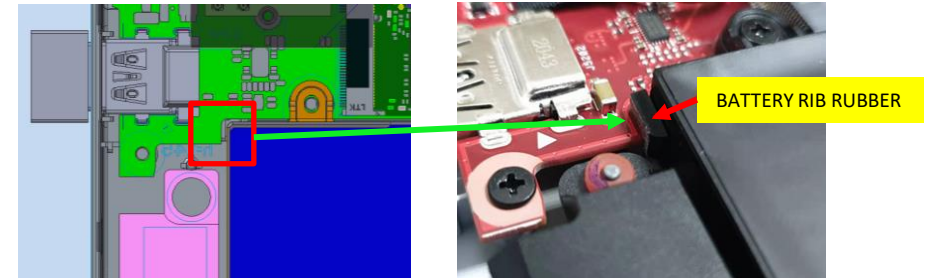


## 3 Remove



## Assembly Notice

 For BATTERY RIB RUBBER assembly, please follow below location to paste.  
\* The BATTERY RIB Rubber need to be attached on the rib.



## 4 Disconnect





## Disassembly Notice

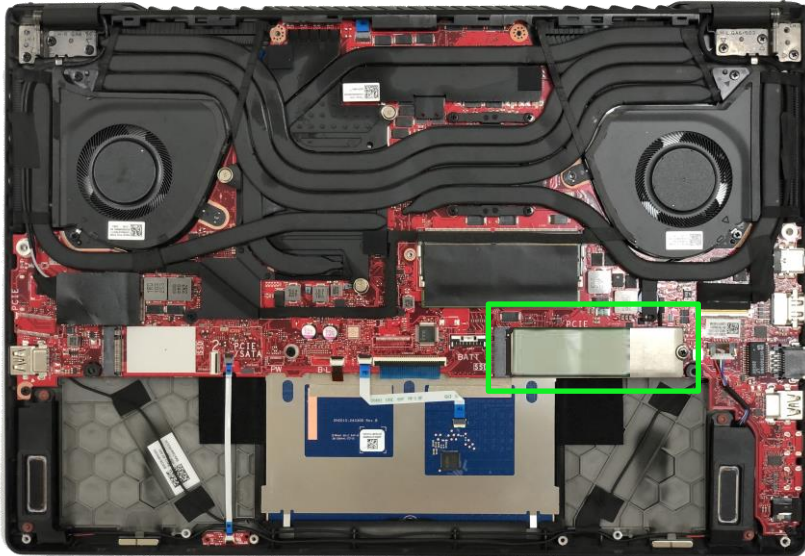
Please be sure to pull out adapter and disconnect the battery. 

Step 1 : Remove the TOP THERMAL PAD and screw.

Step 2 : Remove SSD and BOT THERMAL PAD.

Step 3 : Tear off SSD ABSORBER from SSD.

Screws	QTY	Spec	Torque(kgf-cm)
 	1	M2*4.5L(4.5,0.8) (K)#1	2.0±0.2



### 1 Remove and Unscrew



### 2 Remove



### 3 Tear off



(\*2pcs)

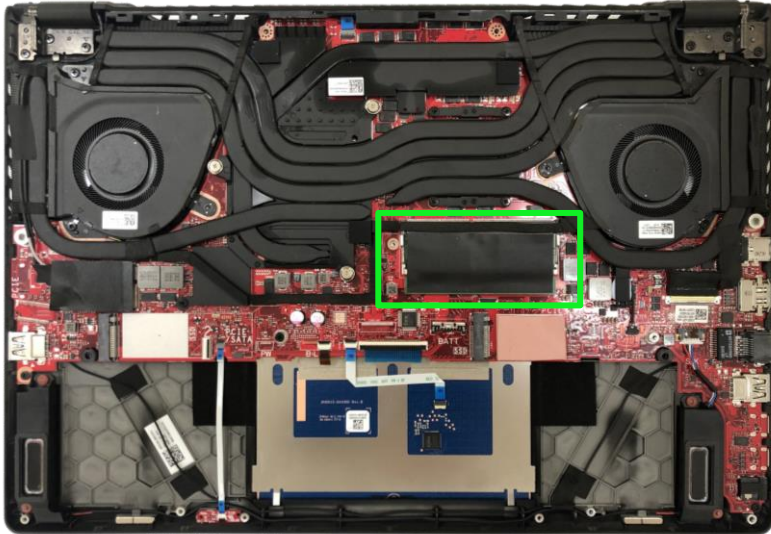
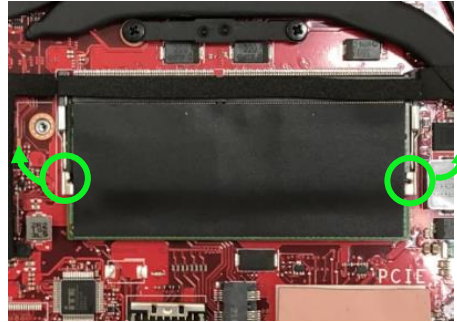
**Disassembly Notice**


Please be sure to pull out adapter and disconnect the battery. 

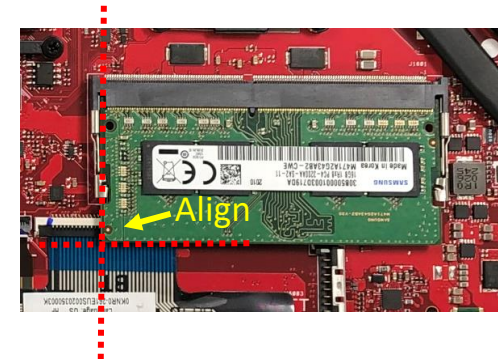
Step 1 : Unlock the DDR.

Step 2 : Remove the DDR.

Step 3 : Tear off SODIMM ABSORBER and MYLAR from DDR.

**1 Unlock****2 Remove****3 Tear off****Assembly Notice**

 Please make sure to paste ABSORBER on the front and back side of DDR, before assembling the DDR.





## Disassembly Notice



Please be sure to pull out adapter and disconnect the battery. 

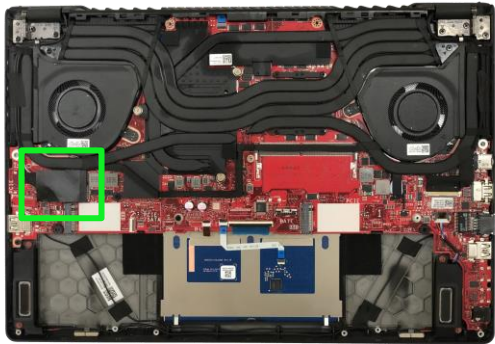
Step 1 : Flip up the Mylar and tear off the tape.

Step 2 : Disconnect RF cable \*2pcs.

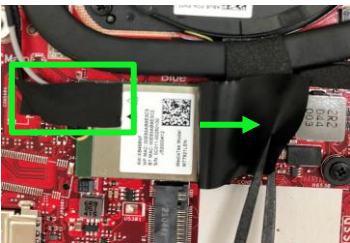
Step 3 : Remove the screw.

Step 4 : Remove the WLAN.

Screws	QTY	Spec	Torque(kgf-cm)
 	1	M2*4.5L(4.5,0.8) (K)#1	2.0±0.2



① Flip up and Tear off



② Disconnect



③ Unscrew



④ Remove



## Assembly Notice

 Please according to below image to assemble RF cable.





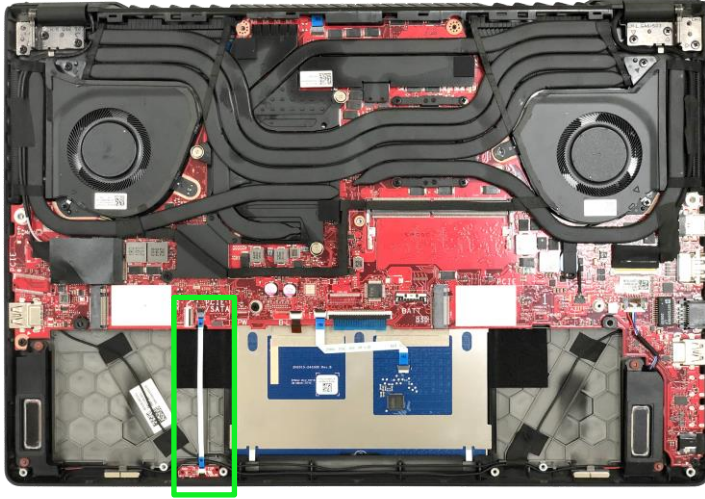
## Disassembly Notice

Please be sure to pull out adapter and disconnect the battery. 

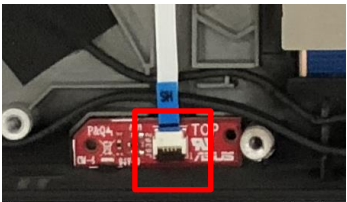
Step 1 : Disconnect the HALL SENSOR FFC connector.

Step 2 : Remove HALL SENSOR FFC.

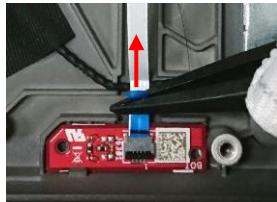
Step 3 : Remove HALL SENSOR BD.



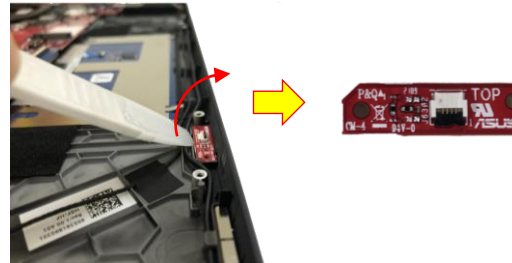
## ① Disconnect




## ② Remove

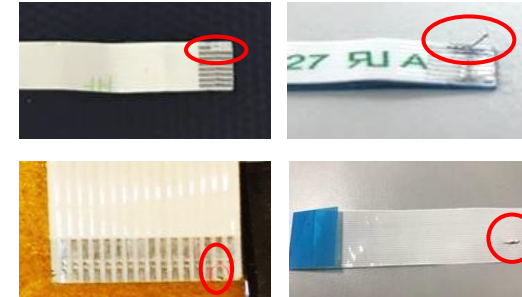


## ③ Remove



## Assembly Notice

 If FFC is damage during disassembly, please replace new one. Here are some samples of FFC damage:



 For HALL SENSOR BD assembly, please paste HALLSENSOR PCB ADH (1pcs) as below.

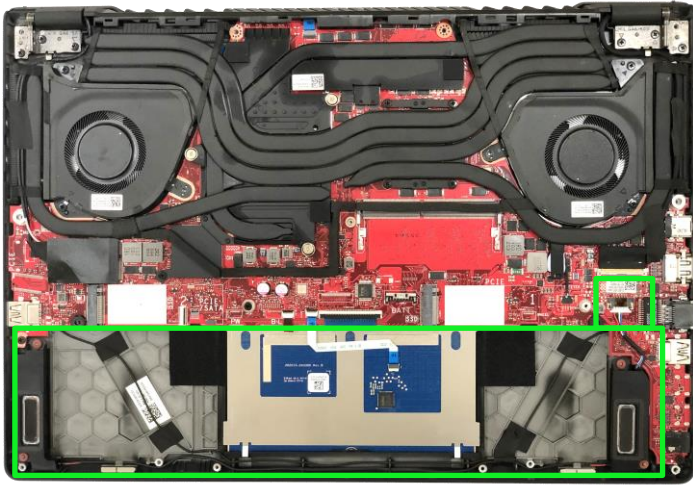


## Disassembly Notice

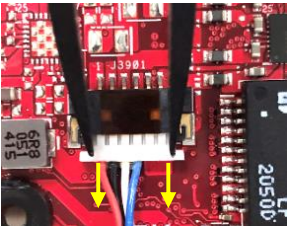
Please be sure to pull out adapter and disconnect the battery. 

Step 1 : Disconnect the SPEAKER connector.

Step 2 : Remove the SPEAKER.



① Disconnect

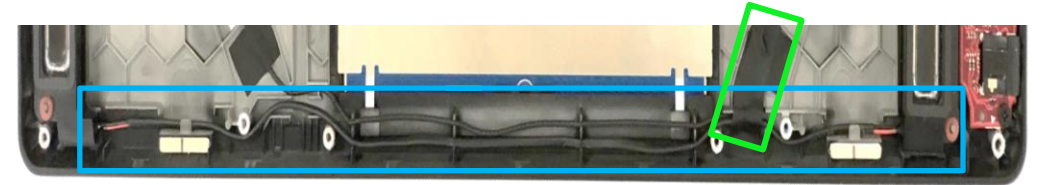
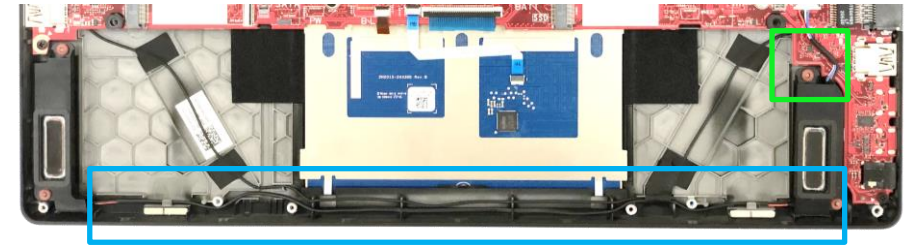


② Remove



## Assembly Notice

 For Woofer Speaker assembly, please follow the mark below to tidy cable.







**Disassembly Notice**


Please be sure to pull out adapter and disconnect the battery. 

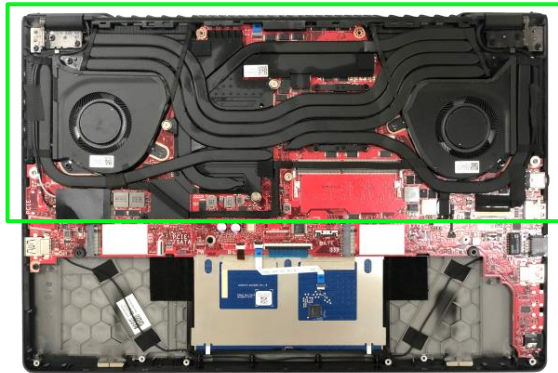
Step 1 : Disconnect EDP cable (Blue area) and release tapes (Green area) and keep them on the cable.

Step 2 : Please follow the reverse screws numbers to release and remove screws \*8pcs.

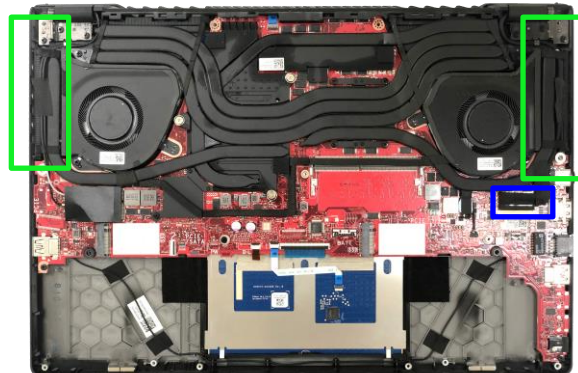
Step 3 : Remove the THERMAL MODULE.

Screws	QTY	Spec	Torque (kgf-cm)
 	5	M2*4.5L (4.5,0.8) (K) #1	2.0±0.2
 	3	Retention screw	2.0±0.2

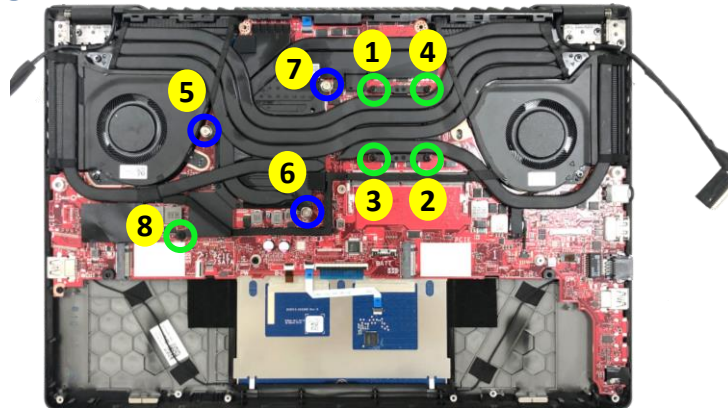
 Recommend that the force point is at green block, and pull up thermal module to take it out. Do not pull up at red block and also notice the thermal pipe should not have deformation.



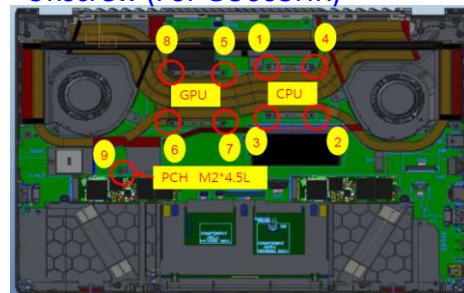
1 Disconnect and Release tapes



2 Unscrew (For GU603HE/HM)



Unscrew (For GU603HR)



3 Remove

**Assembly Notice****Step-1**

- THERMAL MODULE Location:[VRAM/CHOKE/MOS]  
Material: FCR-AS Grease
- MB Location:[GPU]  
Material:  
Main :(TH PAD PTM7958)

**Step-2**

Please refer [Repair Notice SOP](#) for **Liquid metal** rework when reassemble thermal module before.

- MB Location:[CPU]

**Step-3**

Please follow the screws numbers to lock screws \*8pcs.

**IMPORTANT!** Thermal paste, thermal pads, liquid metal, or other thermal interface materials must be thoroughly removed and replaced if this component is removed. Ensure that replacement materials are available before proceeding, or contact an authorized service center for assistance.

**WARNING!** The heat sink contains liquid metal and should only be removed by authorized service personnel. Significant damage may occur to motherboard components if the heat sink is improperly removed.




## Disassembly Notice

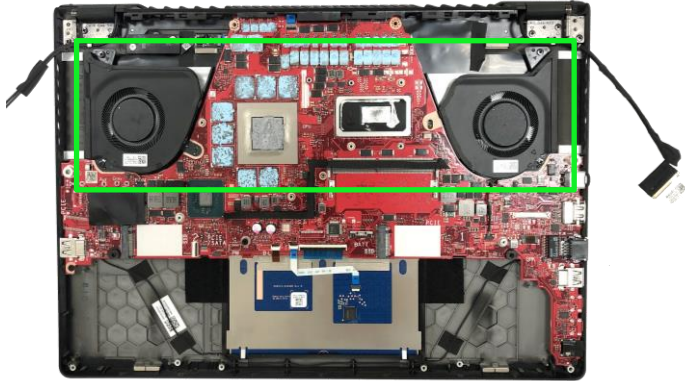
Please be sure to pull out adapter and disconnect the battery. 

Step 1 : Disconnect connectors \*2pcs. (Yellow area)

Step 2 : Remove screws \*4pcs.

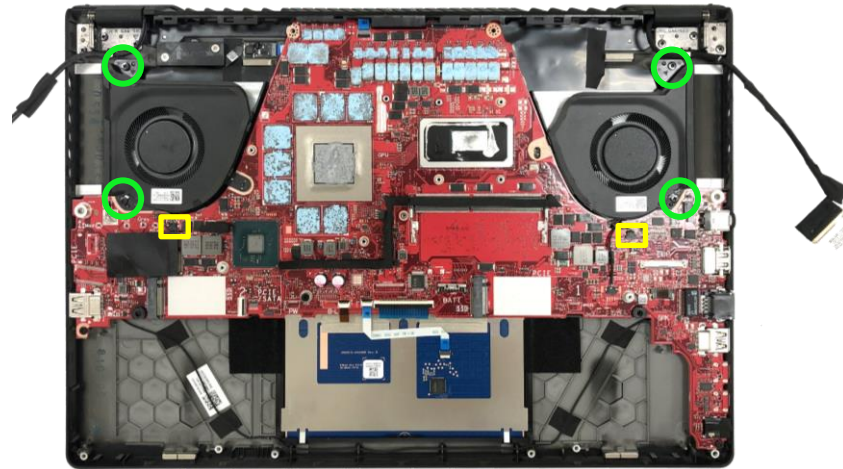
Step 3 : Remove the FAN \*2pcs.

Screws	QTY	Spec	Torque (kgf-cm)
	4	M2*4.5L (4.5,0.8) (K) #1	2.0±0.2

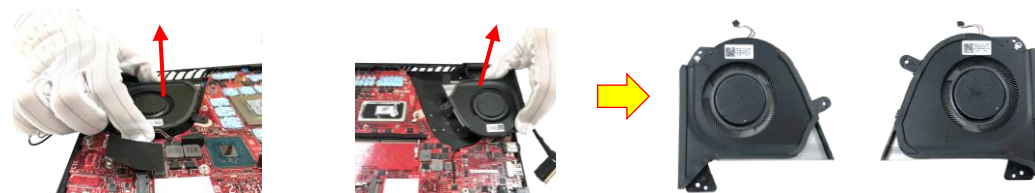


① Disconnect


② Unscrew



③ Remove

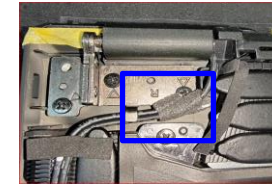


## Assembly Notice

 Please use the correct technique to take fans off to avoid getting out of shape.



 For EDP cable and Antenna, please follow below location to paste CABLE SPONGE. (Blue mark).




## Disassembly Notice

Please be sure to pull out adapter and disconnect the battery. 

Step 1 : Disconnect connectors. (Yellow mark)

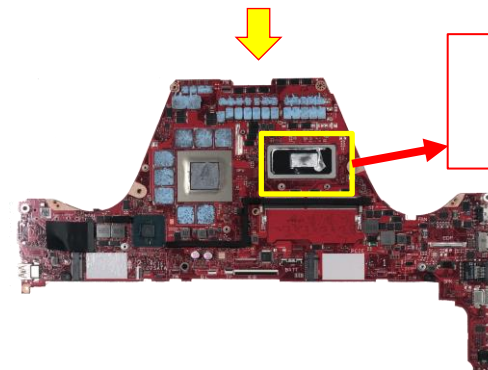
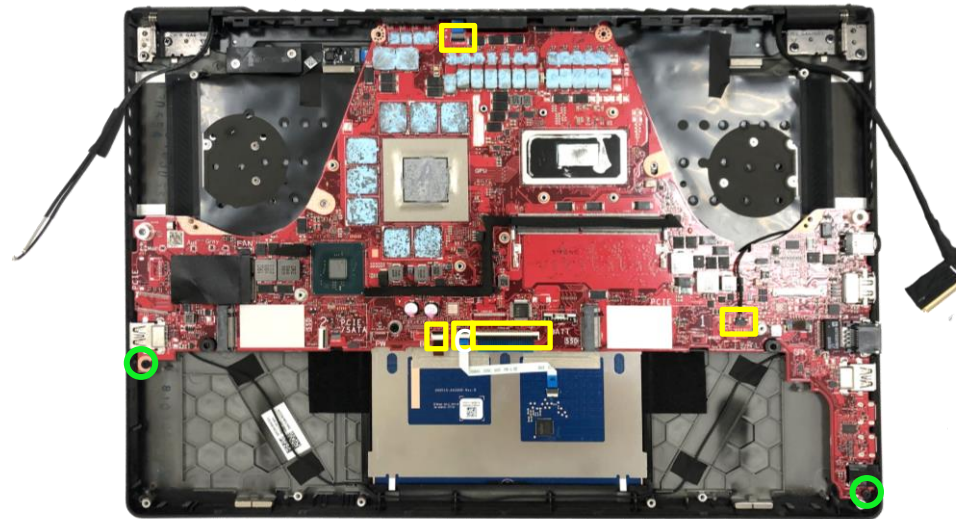
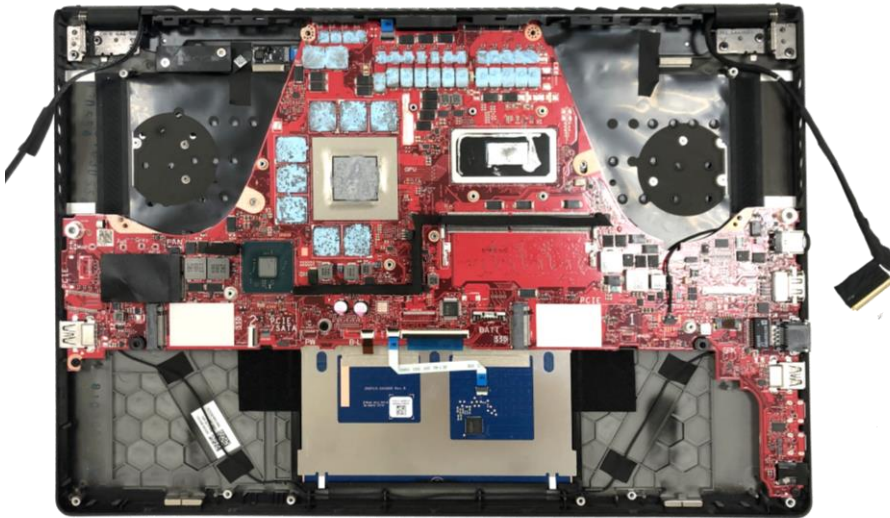
Step 2 : Remove screws \*2pcs. (Green)

Step 3 : Remove the MAIN BOARD.

Screws	QTY	Spec	Torque (kgf-cm)
	2	M2*4.5L (4.5,0.8) (K) #1	2.0±0.2

① Disconnect

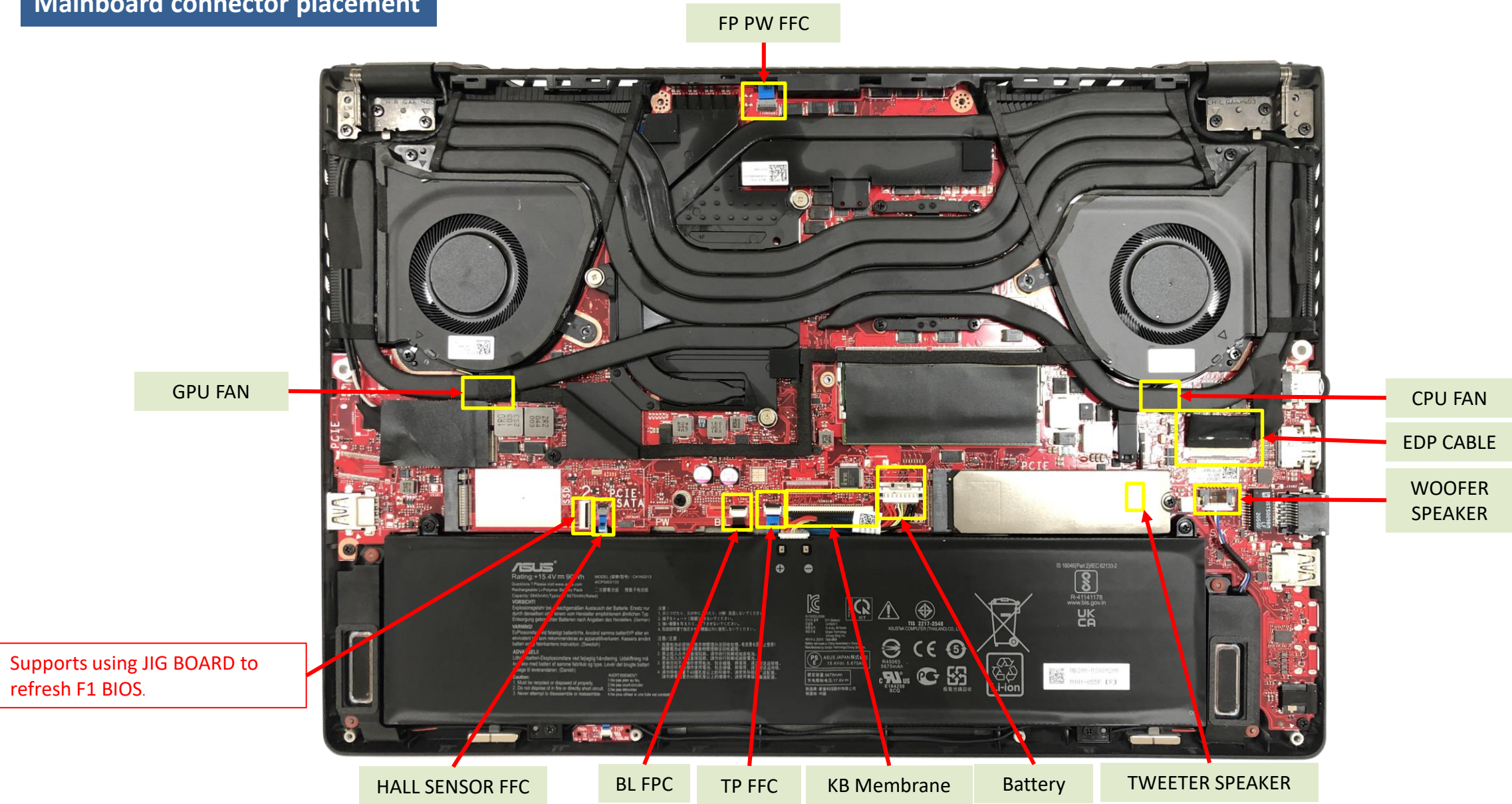
② Unscrew



 Please refer Repair SOP to rework Liquid metal.



## Mainboard connector placement



## Materials on mainboard

- **GU603HM :**  
GX703HS GN20-E3 GPU ABSORBOR
- **GU603HR :**  
GX703HS GN20-E GPU ABSORBOR
- **GU603HE :**  
G531GW X50 TI GPU MYLAR

GU603HR TGL-H CPU MYLAR

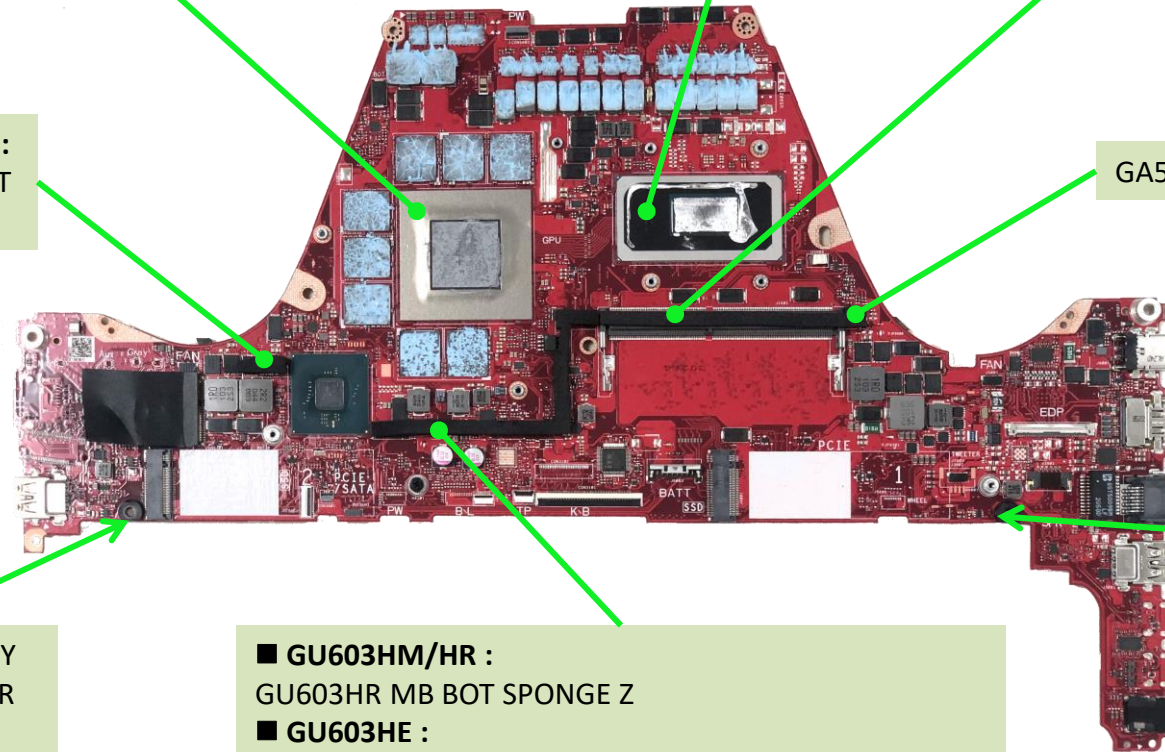
GA503QS MB BOT SPONGE 3

- **GU603HM/HR :**  
GU603HR MB BOT SPONGE PCH

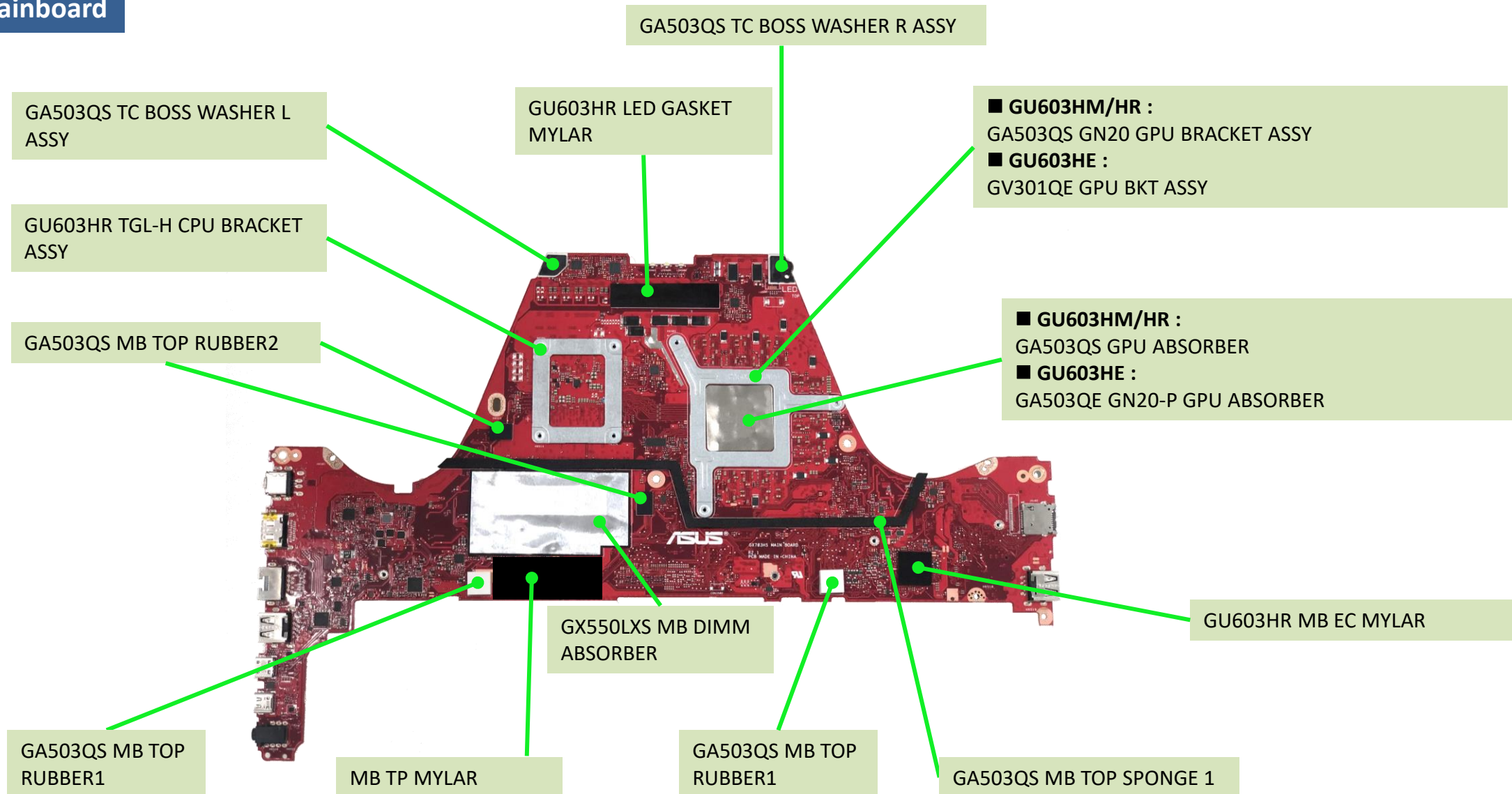
GA503QS MB BOT SPONGE 2

GA503QS BATTERY  
SUPPORT WASHER  
ASSYGA503QS BATTERY  
SUPPORT WASHER ASSY

- **GU603HM/HR :**  
GU603HR MB BOT SPONGE Z
- **GU603HE :**  
GU603HE MB BOT SPONGE Z 20P



## Materials on mainboard



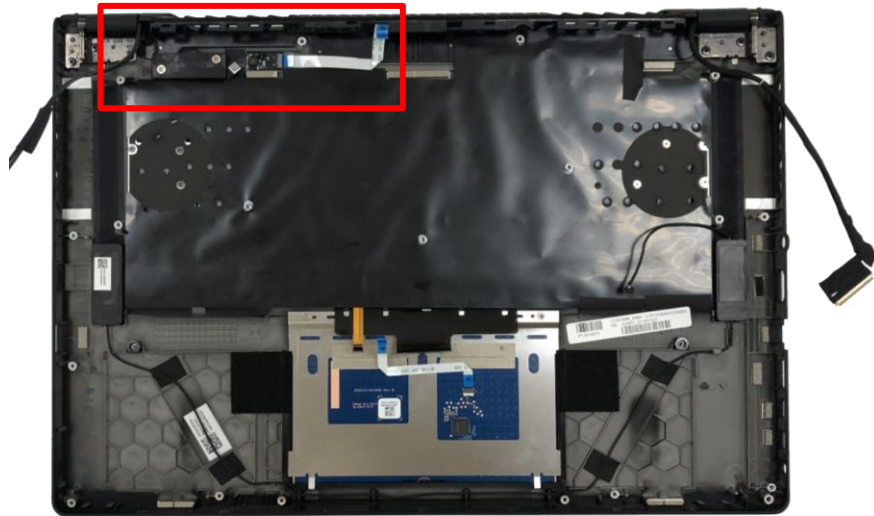


## Disassembly Notice

Please be sure to pull out adapter and disconnect the battery.

- Step 1 : Disconnect FP connector and remove FFC.  
 Step 2 : Remove screws \*2pcs and remove holder.  
 Step 3 : Remove FP Touch module.  
 Step 4 : Remove POWER KEY RUBBER.

Screws	QTY	Spec	Torque (kgf-cm)
	2	M2*3L (K) B-ZN #1 NY	2.0±0.2



### 1 Disconnect



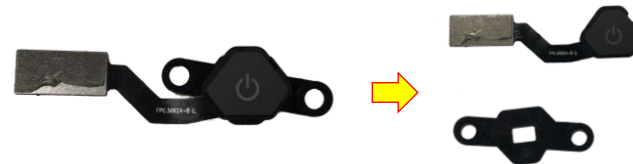
### 2 Unscrew and remove



### 3 Remove



### 4 Remove

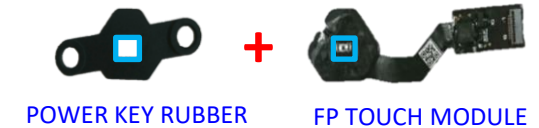


## Assembly Notice

If FFC is damage during disassembly, please replace new one. Here are some samples of FFC damage:



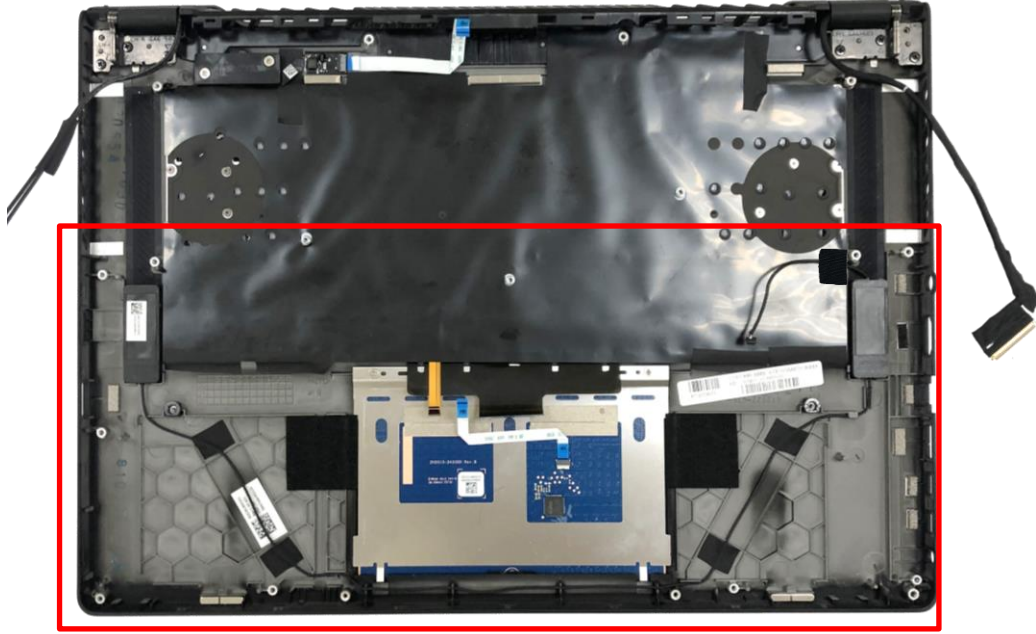
When assembly the FP TOUCH Module, Please paste POWER KEY RUBBER as below location.



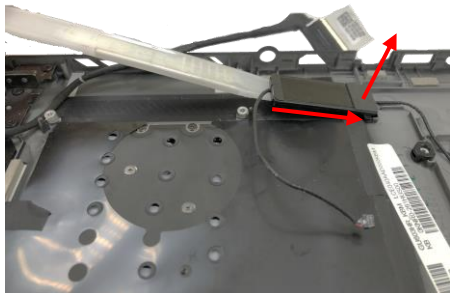
## Disassembly Notice

Please be sure to pull out adapter and disconnect the battery. 


Step 1 : Use plastic blade to separate tweeter speaker from TOP CASE.

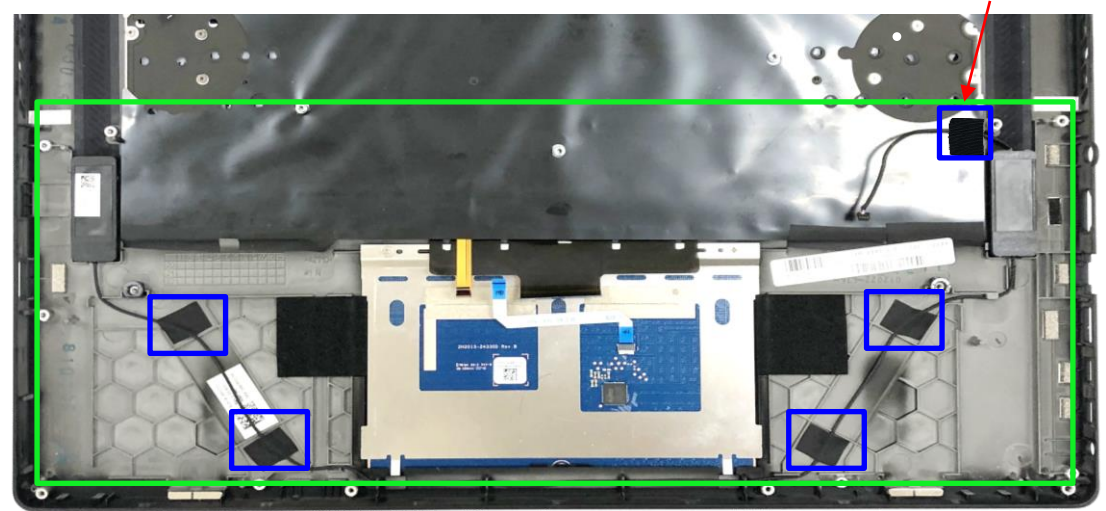


### ① Separate



## Assembly Notice

 For TWEETER SPEAKER assembly, please follow below location to paste SPK CABLE TAPE. (Blue mark)





## Disassembly Notice

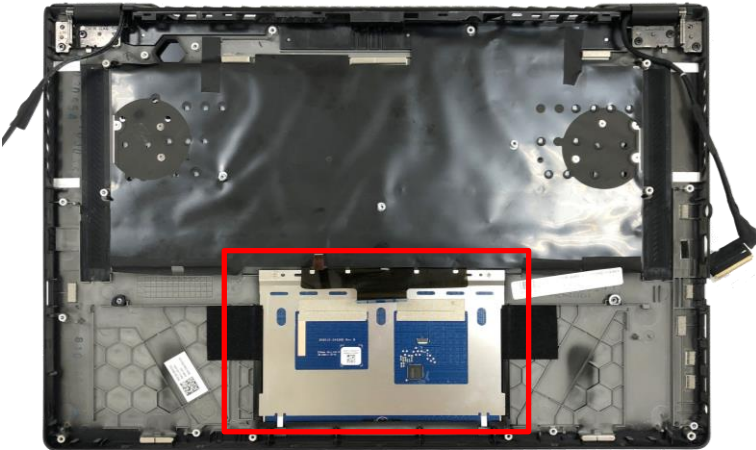
Please be sure to pull out adapter and disconnect the battery. 

Step 1 : Flip up the KB FPC.

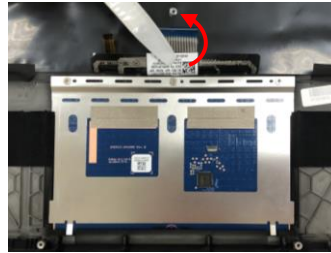
Step 2 : Remove screws \*3pcs.

Step 3 : Remove TOUCHPAD module.

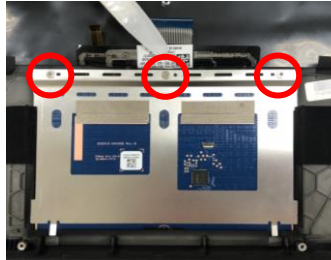
Screws	QTY	Spec	Torque (kgf-cm)
 	3	M2*2.5L (4.5,0.8) (K) #1	2.0±0.2



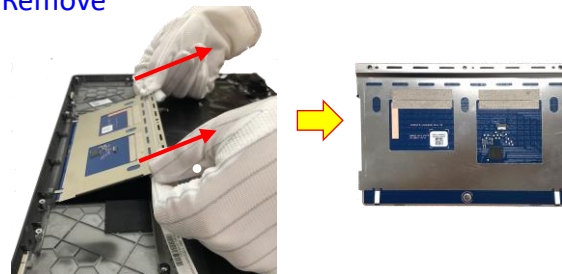
## ① Flip up




## ② Unscrew

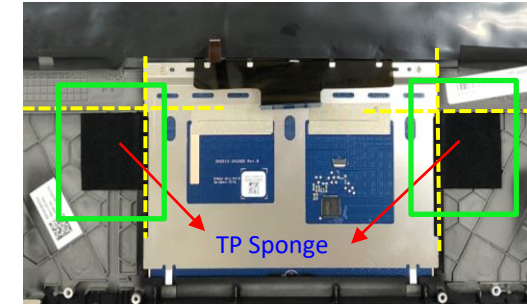



## ③ Remove

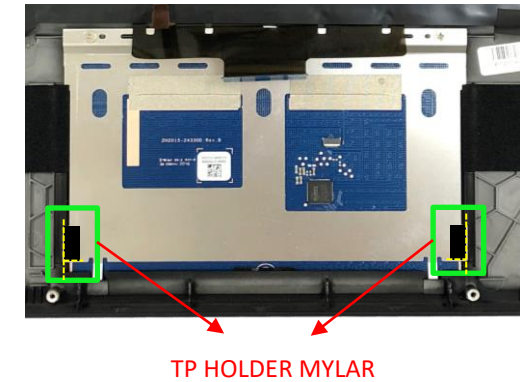


## Assembly Notice

 After TOUCHPAD assemble, please follow below location to paste the TP Sponge.



 After TOUCHPAD assembly, please follow below location to paste the TP HOLDER MYLAR.







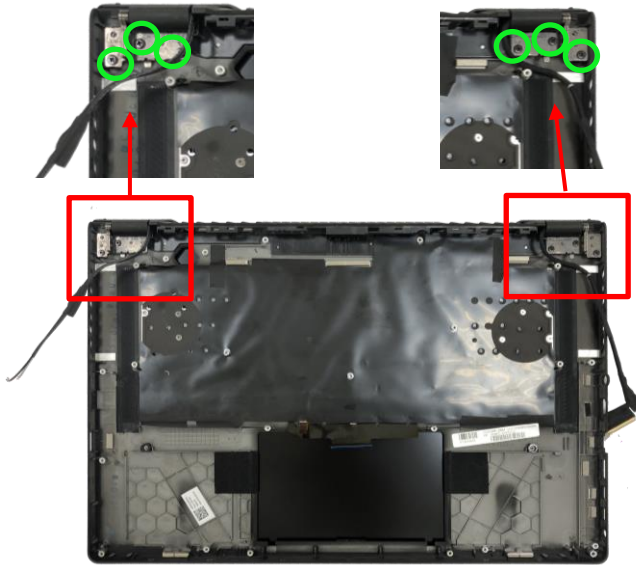
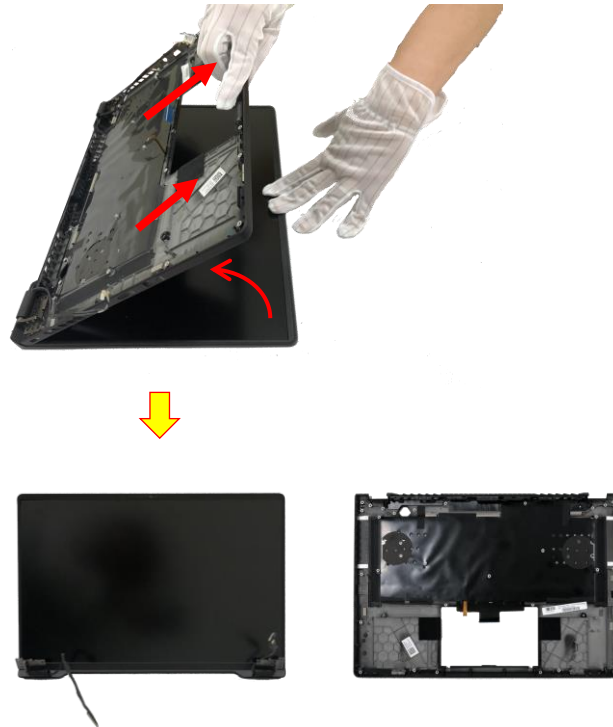
**Disassembly Notice**

Please be sure to pull out adapter and disconnect the battery. 

Step 1 : Remove hinge's screws \*6pcs.

Step 2 : Flip up and remove KB module.

Screws	QTY	Spec	Torque (kgf-cm)
 	6	M2*4.5L (4.5,0.8) (K) #1	2.0±0.2

**① Unscrew****② Flip up and remove**

## Disassembly Notice

Please be sure to pull out adapter and disconnect the battery. 

Step 1 : Remove LCD BEZEL.

1

**Step 1-1~1-3**, Start from the middle area of each side of bezel, Using the forefinger to hold the outer edge firmly and the thumb flipping the bezel inner edge outward to release the hooks as indicated in the diagram shown. (It can be helpful, if holding the bezel outer edge firmly with forefinger.)



Step 1-1~1-3

Thumb flipping the inner edge outward.

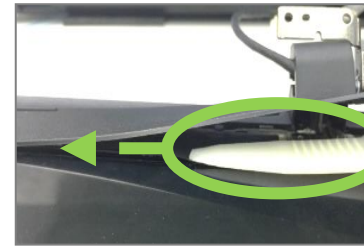


Step 1-4

Due to some tapes behind the lower edge of bezel, please using plastic blade to teardown the bezel.

Please follow the direction shown in the red arrow, to move plastic blade from left to right and peel the bezel away slowly. **While peeling, please move the blade in the parallel direction to the panel and pressing the black Mylar downward (As circled in green) to ensure the black Mylar and the tape behind the bezel are well separated.**

Please move blade slowly to separate the bezel away, and must press the black Mylar downward with panel parallel direction..

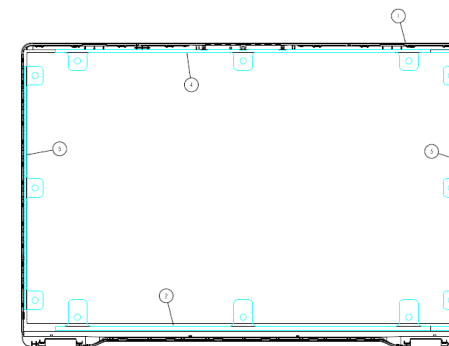
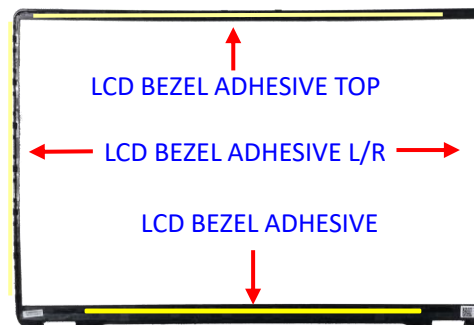


## Assembly Notice



**When reuse the LCD BEZEL:**

Please paste new LCD BEZEL ADHESIVE before assembly BEZEL.  
(New LCD BEZEL already contains LCD BEZEL ADHESIVE \*1pcs, LCD BEZEL ADHESIVE TOP\*1 pcs, LCD BEZEL ADHESIVE L/R\*2pcs.)



**Disassembly Notice**





Please be sure to pull out adapter and disconnect the battery. 

Step 1 : Pull out LCD adhesive \*2pcs.

Step 2 : Flip up the panel and disconnect the EPD cable.

Step 3 : Remove screws \*6pcs.

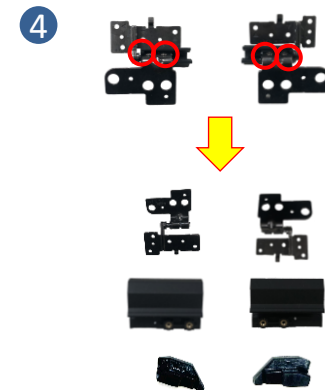
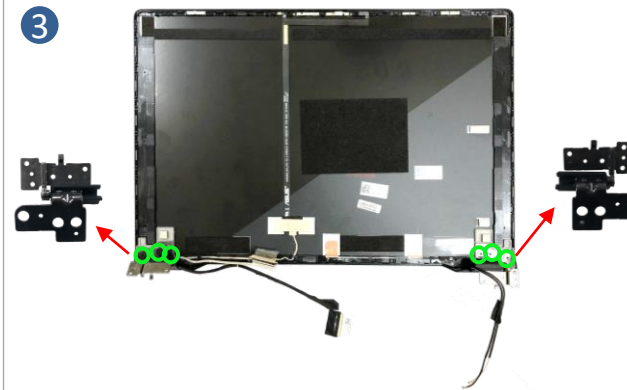
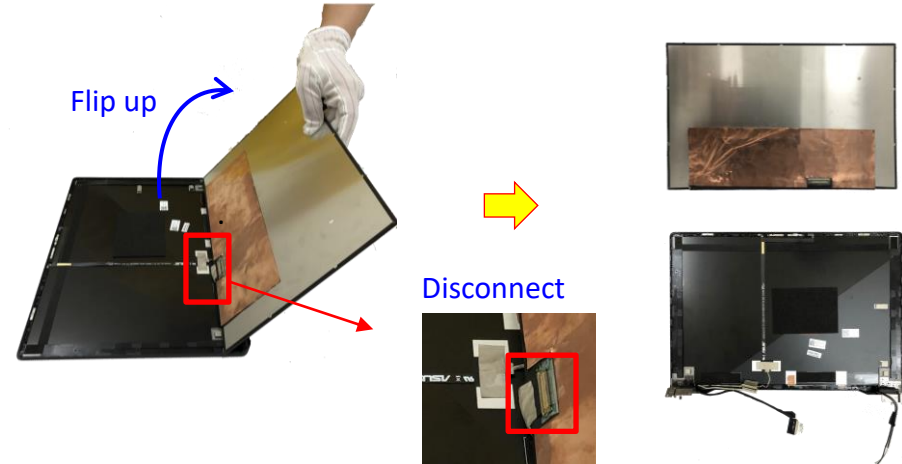
Step 4 : Remove screws\*4pcs and remove hinge caps and hinge DECO rubbers.

Screws	QTY	Spec	Torque (kgf-cm)
 	6	M2.5*2.3L(7.5,0.6)(K) #1	2.3±0.2 kgf-cm
 	4	M1.4*2.5L(3.4,0.5) (K)#0	1.0±0.2 kgf-cm

- 1  Please pull the adhesive up about 30 degree slowly, and don't pull out the tape in vertical direction!



- 2 Flip up the panel, and disconnect the MIC cable and EDP cable.

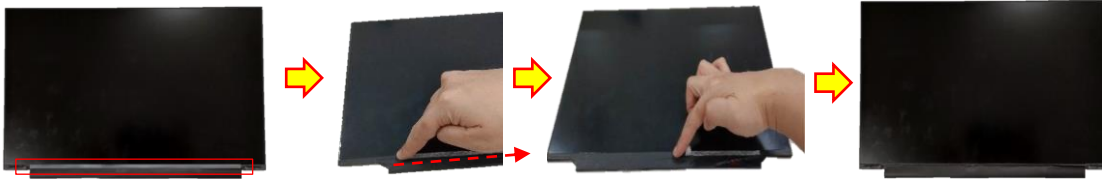


**Assembly Notice**

Please be sure to pull out adapter and disconnect the battery. 

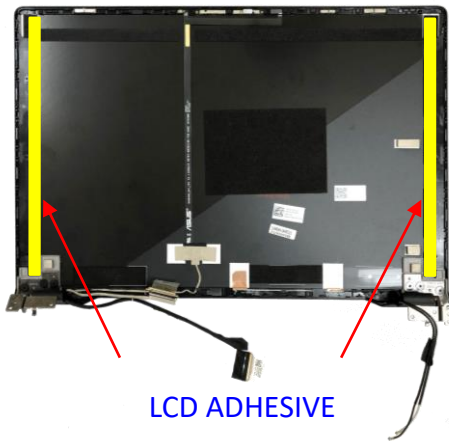
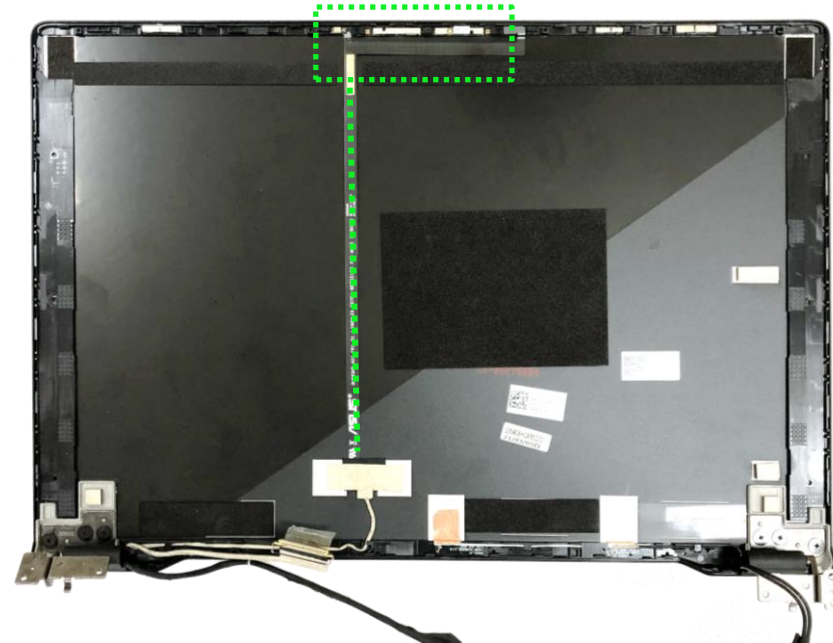
**A When reuse the LCD PANEL:**

Please use the fingertip to clean the residual glue on PANEL or BEZEL.

**B When reuse the LCD COVER:**

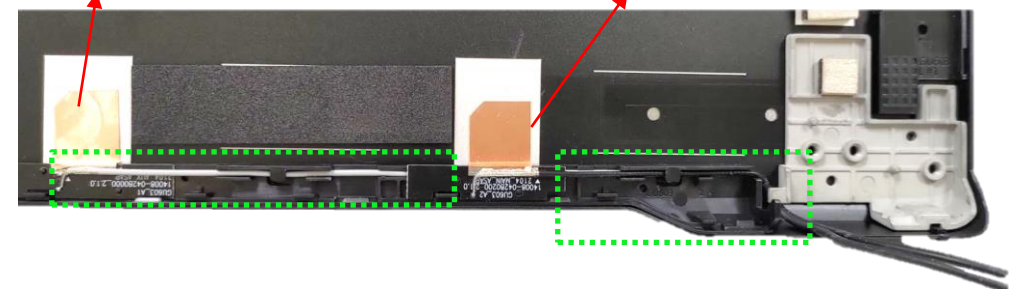
Please paste new PANEL ADHESIVE \*2pcs.

(New LCD COVER already contains PANEL ADHESIVE \*2pcs)

**C Please follow the green mark to tidy MIC FPC and Antenna.**

ANTENNA A1

ANTENNA A2



## Assembly Notice

Please be sure to pull out adapter and disconnect the battery.

### D When assembly the LCD PANEL: (The following is an operation example)

Step 1~2 : Paste NB LCD MYLAR \*6pcs on LCD COVER.  
(Positions are as below)

#### D-1 Upper Left Corner : Mylar \*3pcs

Overlap LCD MYLAR \*2pcs

#### D-2 Upper Right Corner : Mylar \*3pcs

Overlap LCD MYLAR \*2pcs

LCD MYLAR \*1pcs

LCD MYLAR \*1pcs

Step 3 : Remove release paper of LCD Adhesive \*2pcs.

Step 4 : Assembly and align the LCD to the upper side of the LCD Cover.

Step 5 : Remove Mylar \*8pcs and complete the Panel assembly.

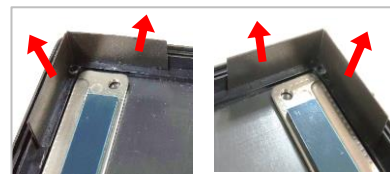
#### D-3 Remove



#### D-4 Align



#### D-5 Pull out Mylar \*8pcs.



Please stick LCD MYLAR on the plastic bag save after used, and repeatedly use until lose stickiness.

### E When reassembly PANEL:

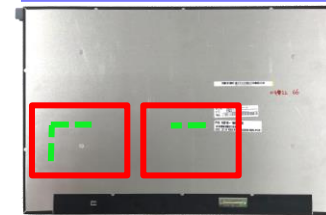
Please make sure paste GRAPHITE and CU FOIL at panel back side.



#### E-1

Please confirm the position to be pasted according to different panel.(Green line).

#### With Position line panel



#### Without Position line panel



#### E-2

Paste the GRAPHITE.



#### E-3

Paste the CU Foil.  
(on the GRAPHITE)





## Disassembly Notice

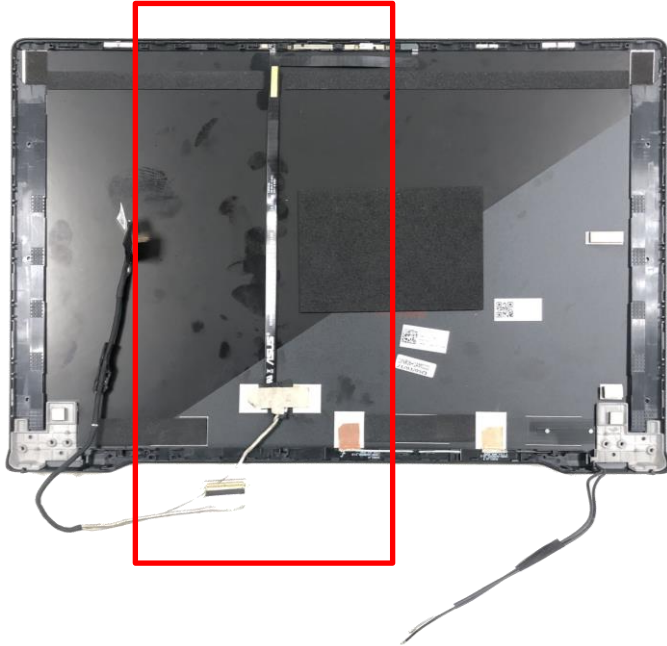
Please be sure to pull out adapter and disconnect the battery. 

Step 1 : Release GASKET and disconnect MIC FPC connector \*2pcs.

Step 2 : Remove MIC FPC and EDP CABLE.

Step 3 : Remove CAMERA.

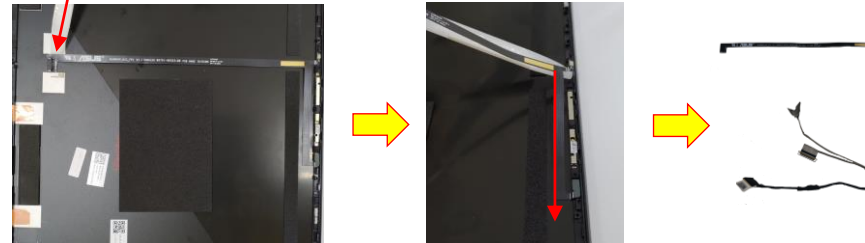
Step 4 : Remove MIC RUBBER \*2pcs.



## ① Release and disconnect



## ② Remove




## ③ Remove



## ④ Remove



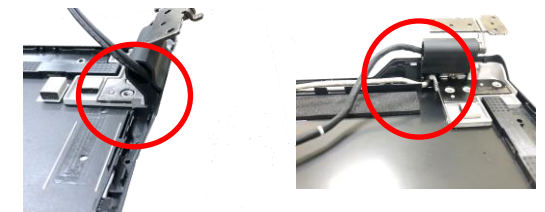
## Assembly Notice

 For EDP cable assembly, please follow the mark below to tidy cable.

On the KB module



On the A cover



 After the Camera is assembled, please paste Mic FPC GND tape and Mic FPC GND sponge.

Step 1. Paste the tape.

Step 2. Paste the sponge.

