

ROG Flow X16 (GV601V) Series

Service Guide

COPYRIGHT INFORMATION

No part of this manual, including the products and software described in it, may be reproduced, transmitted, transcribed, stored in a retrieval system, or translated into any language in any form or by any means, except documentation kept by the purchaser for backup purposes, without the express written permission of ASUSTeK COMPUTER INC. ("ASUS").

ASUS PROVIDES THIS MANUAL "AS IS" WITHOUT WARRANTY OF ANY KIND, EITHER EXPRESS OR IMPLIED, INCLUDING BUT NOT LIMITED TO THE IMPLIED WARRANTIES OR CONDITIONS OF MERCHANTABILITY OR FITNESS FOR A PARTICULAR PURPOSE. IN NO EVENT SHALL ASUS, ITS DIRECTORS, OFFICERS, EMPLOYEES OR AGENTS BE LIABLE FOR ANY INDIRECT, SPECIAL, INCIDENTAL, OR CONSEQUENTIAL DAMAGES (INCLUDING DAMAGES FOR LOSS OF PROFITS, LOSS OF BUSINESS, LOSS OF USE OR DATA, INTERRUPTION OF BUSINESS AND THE LIKE), EVEN IF ASUS HAS BEEN ADVISED OF THE POSSIBILITY OF SUCH DAMAGES ARISING FROM ANY DEFECT OR ERROR IN THIS MANUAL OR PRODUCT.

Products and corporate names appearing in this manual may or may not be registered trademarks or copyrights of their respective companies, and are used only for identification or explanation and to the owners' benefit, without intent to infringe.

SPECIFICATIONS AND INFORMATION CONTAINED IN THIS MANUAL ARE FURNISHED FOR INFORMATIONAL USE ONLY, AND ARE SUBJECT TO CHANGE AT ANY TIME WITHOUT NOTICE, AND SHOULD NOT BE CONSTRUED AS A COMMITMENT BY ASUS. ASUS ASSUMES NO RESPONSIBILITY OR LIABILITY FOR ANY ERRORS OR INACCURACIES THAT MAY APPEAR IN THIS MANUAL, INCLUDING THE PRODUCTS AND SOFTWARE DESCRIBED IN IT.

Copyright © 2024 ASUSTeK COMPUTER INC. All Rights Reserved.

LIMITATION OF LIABILITY

Circumstances may arise where because of a default on ASUS' part or other liability, you are entitled to recover damages from ASUS. In each such instance, regardless of the basis on which you are entitled to claim damages from ASUS, ASUS is liable for no more than damages for bodily injury (including death) and damage to real property and tangible personal property; or any other actual and direct damages resulted from omission or failure of performing legal duties under this Warranty Statement, up to the listed contract price of each product.

ASUS will only be responsible for or indemnify you for loss, damages or claims based in contract, tort or infringement under this Warranty Statement.

This limit also applies to ASUS' suppliers and its reseller. It is the maximum for which ASUS, its suppliers, and your reseller are collectively responsible.

UNDER NO CIRCUMSTANCES IS ASUS LIABLE FOR ANY OF THE FOLLOWING: (1) THIRD-PARTY CLAIMS AGAINST YOU FOR DAMAGES; (2) LOSS OF, OR DAMAGE TO, YOUR RECORDS OR DATA; OR (3) SPECIAL, INCIDENTAL, OR INDIRECT DAMAGES OR FOR ANY ECONOMIC CONSEQUENTIAL DAMAGES (INCLUDING LOST PROFITS OR SAVINGS), EVEN IF ASUS, ITS SUPPLIERS OR YOUR RESELLER IS INFORMED OF THEIR POSSIBILITY.

Disclaimer

ASUS is not responsible for direct, indirect, intentional or unintentional damages resulting from improper installation and operation.

Safety precautions

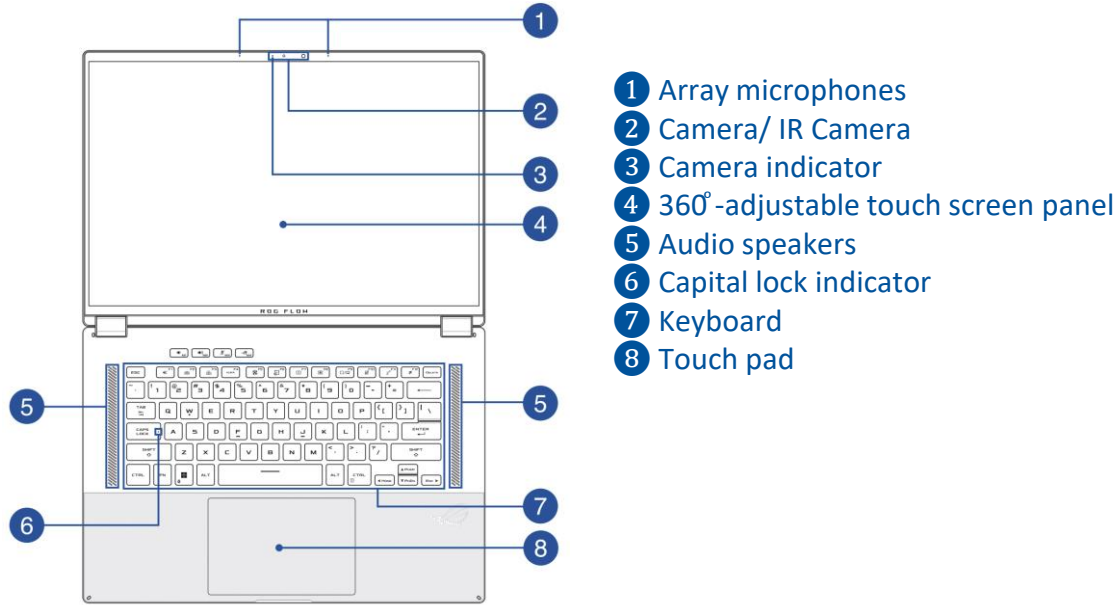
- Keep liquids or moisture away from your Notebook PC before installing or removing any components.
- Ensure to place your Notebook PC on a stable surface before installing or removing any components.
- Detach the clip or flap before removing the signal cables to prevent damage.
- Disconnect the power plug by pulling the plug evenly to avoid damage. Ensure to connect the signal cables in the correct orientation.
- Disconnect all power cables and remove the battery pack (if applicable) before cleaning your Notebook PC with liquid detergent to avoid risk of electric shock.
- Disconnect all power cables and remove the battery pack (if applicable) before installing or removing any components. Ensure to read and follow the instructions in the manual.
- Before handling components, use a grounded wrist strap or touch a safely grounded object to avoid damaging them due to static electricity.
- Keep liquids or moisture away from your Notebook PC to avoid short circuits.
- Hold components by the edges to avoid touching the ICs.
- Ensure to properly install all the components before connecting the AC power.
- Do not use power adapters or batteries from other devices to reduce the risk of injury to persons due to fire or explosion. Use only certified power adapters or batteries supplied by the manufacturer or authorized retailers.
- Ensure to install the correct screw models on your Notebook PC to prevent damage.

- [Service Overview](#)
- [ASUS ROG Flow X16 \(GV601V\) Series Overview](#)
- [Components Top View](#)
- [Components Bottom View](#)
- [Repair Overview](#)
- [Appropriate Tools](#)
- [Keyparts and Related Parts](#)
- Disassembly Steps :
 - [BOTTOM CASE](#)
 - [DISCONNECT BATTERY CONNECTOR](#)
 - [SSD](#)
 - [DDR](#)
 - [BATTERY](#)
 - [WIFI CARD](#)
 - [SYS FAN \(with Main Board 、 Thermal Module & FAN\)](#)
 - [THERMAL MODULE & FAN](#)
 - [MAIN BOARD](#)
 - [TWEETER and WOOFER](#)
 - [HALL SENSOR BOARD](#)
 - [KEYBOARD MODULE](#)
 - [LCD BEZEL](#)
 - [LCD PANEL](#)
 - [G SENSOR FPC](#)
 - [LCD COVER](#)

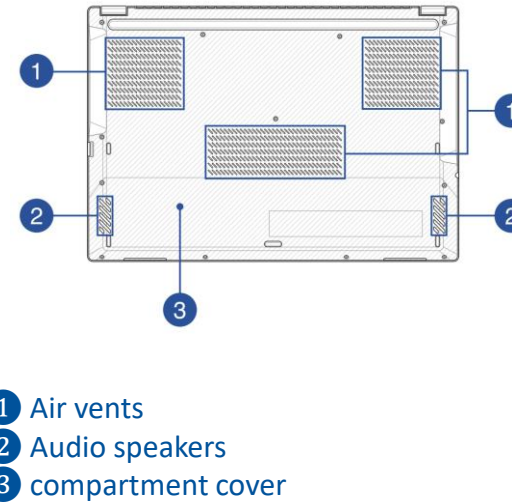
- **Carefully read through this Service Guide for a look at various components of the device before performing any service and repairs.**
- To provide the best service, we have provided the below information for technicians from distributors and resellers to perform the complete device disassembly and assembly. Before performing the procedures, please be sure to read through the overview in this service guide for component overview to avoid any unwarranted damages to the device hardware.
- The following contents include all part numbers mentioned in the service guide are **used for reference only**, if you need the exact part number for ordering, please refer to the Orderbook.
- Due to sales policy difference, the components might have different specifications on the same series product, please refer to E-manual by model.

Due to sales policy difference, the components may have different specifications on the same model. If you have any operational issues, please contact the service hotline.

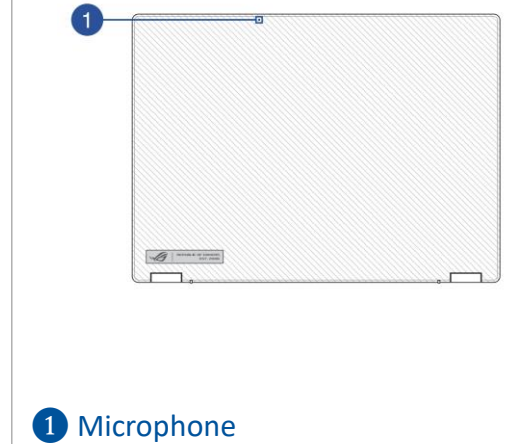
Top View



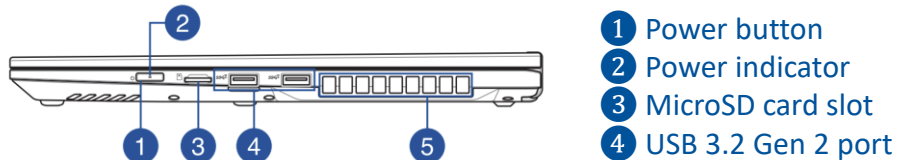
Bottom View



Cover



Right View



Left View



Note: Supports using JIG BOARD and Type C debug cable to read EEPROM data.



The "UP" mark on the TYPE-C debug cable must be inserted facing upwards.

◆ LCD COVER ASSY



◆ LCD Panel



◆ BOTTOM CASE ASSY



◆ KEYBOARD MODULE



◆ BATTERY CABLE



◆ BATTERY



◆ MAIN BOARD



◆ SSD



◆ WIFI CARD



◆ LCD Bezel



◆ TOUCH PAD



◆ THERMAL MODULE ASSY



◆ DDR



◆ GPU FAN



◆ SYS FAN



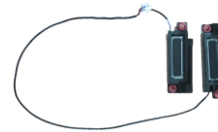
◆ CPU FAN



◆ TWEETER



◆ WOOFER



◆ POWERKEY FPC



◆ POWER KEY



◆ POWER KEY BRKT ASSY



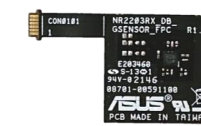
◆ HALL SENSOR FFC



◆ HALL SENSOR BOARD



◆ G SENSOR FPC



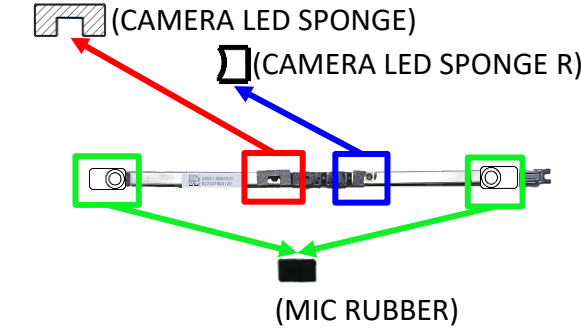
◆ EDP CABLE



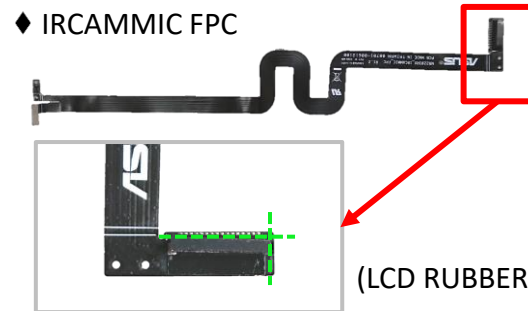
◆ TP FFC



◆ CAMERA FHD RGB/HD IR ARRAY MIC CR



◆ IRCAMMIC FPC



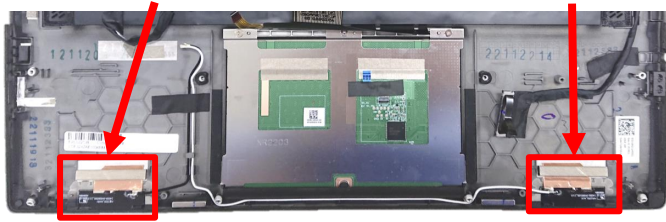
◆ SSD1 THERMAL PAD(3.5T)



◆ CAM TOUCH CABLE



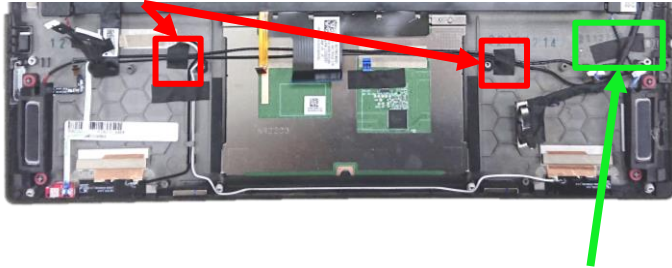
◆ WIFI MAIN ANTENNA



◆ WIFI AUX ANTENNA



◆ TWEETER TAPE



◆ NR2203RM BATTERY GASKET

◆ CABLE TAPE

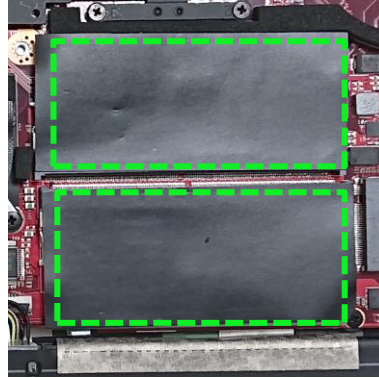


◆ NR2203RM BATTERY GASKET 2

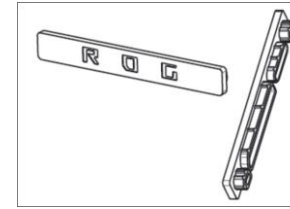


◆ GV601VU BATTERY GASKET

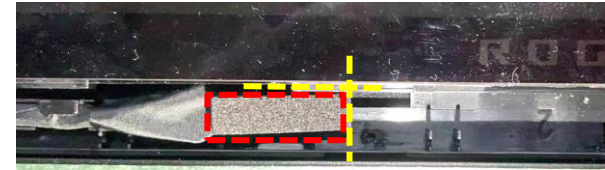
◆ SODIMM CONN ABSORBER



◆ GC CONNECTOR RUBBER



◆ LCD SPONGE



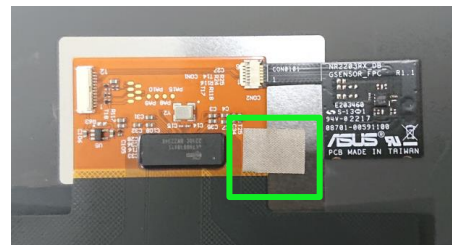
◆ SSD ABSORBER



◆ CAM TOUCH CABLE



◆ LCD CONDUCTIVE TAPE



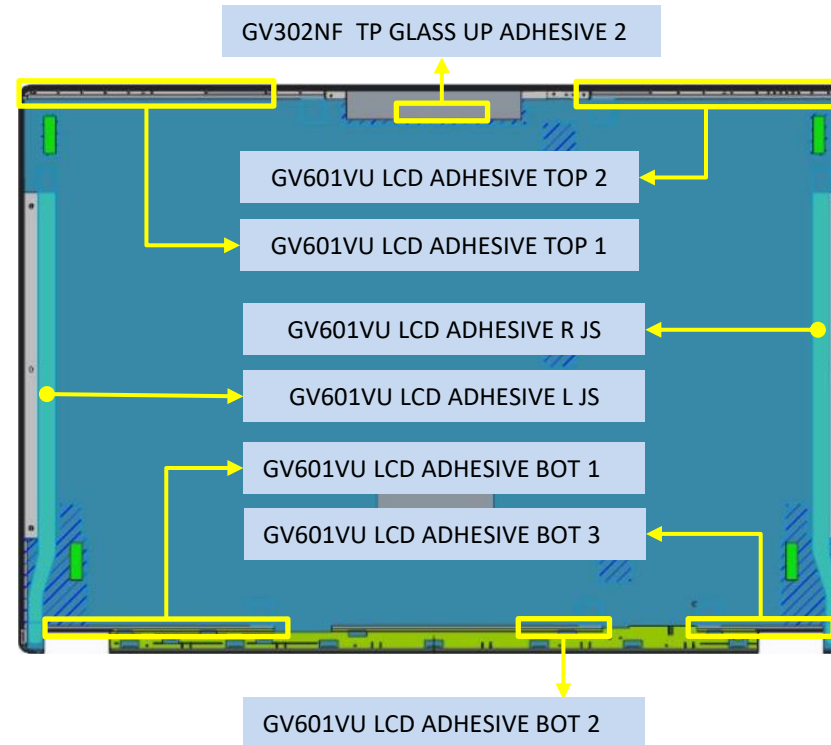
◆ LCD PANEL



◆ KEYBOARD MODULE



◆ LCD ADHESIVE Overview



◆ LCD COVER ASSY



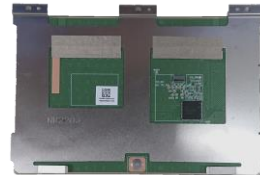
◆ BOTTOM CASE ASSY



◆ THERMAL MODULE ASSY



◆ TOUCH PAD



◆ MAIN BOARD



◆ HALL SENSOR



(HALL SENSOR PCD ADH)

This chapter describes disassembly and assembly (Assemble document please look up from the last page), please follow the information provided in this section to perform the complete disassembly procedure.

◆ Precautions:

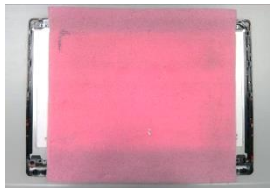
Before you perform any service or repair on the notebook, please pay special attention to the cautions prevent any damages to the notebook.

1. Be sure that the notebook is powered down.
2. Before disassembling any part, please disconnect all power source. ex: AC plug/Battery connector/Power protect screw etc.

3. Remove all rings, watches and any other metal objects from your hands.



4. Always wear a ground strap on your hand to protect the notebook from static discharge.
5. Please refer to “ANSI ESD S20.20” about ESD protection measure.
6. Put the disassembled parts in the functional PE BAG to avoid any damages of the A/B/C/D part.



7. The maintenance environment temperature is 20-30 °C and humidity is 40% - 70%.
8. To avoid scratching on the surface of machine; please use anti-static and soft materials to put on desk in repair environment as below photo.



9. Screw Appearance Criteria:

If the screws have the following damaged appearance, please do not use.

- a. Shape deformed.
- b. Damaged head – unable to drive in or the stripped screw.
- c. Damaged unable to securely tighten.
- d. Paint scratched off.
- e. Rusty



10. The following chapter includes all part numbers mentioned in service guide are used for reference only, actual part name depends on different SKU, if you need the exact part number for ordering, please refer to the Orderbook.
11. Due to sales policy difference, the components may have different specifications on the same model. Please note that all pictures and components shown on Service Guide are for disassembly/assembly description purpose only, so please refer to the actual product for disassemble/assemble.

Please prepare and select the appropriate tools to disassemble/assemble for the ROG Flow X16 (GV601V) Series notebook.

◆ Screwdriver

Please accord to different screw specification to choose different screwdriver and head.



◆ Plastic Blade



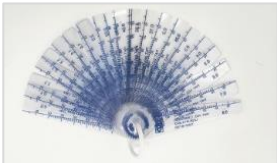
◆ Plastic Tweezers

Use a pair of tweezers to remove/insert/tidy cables.



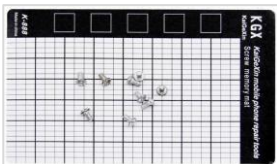
◆ Thickness Gauge

Thickness compass specification 0.05mm-1.5mm. Use it to measure the gap.



◆ Magnetism Board

Suggest local buy magnetism board to place screw, avoid mix different type screw to cause assembly damage.



◆ Alcohol 95%



◆ Glove



◆ Dust-free Cloth



◆ Thermal Pad PTM7958



◆ PLASTIC CARD T=0.35mm



◆ PLASTIC PICK T=0.5mm



◆ FCR-AS Thermal Grease



Please prepare and select the appropriate tools to disassemble/assemble for the ASUS ROG Flow X16 (GV601V) Series notebook.



Item	Part Name	Memo
1	Silicone scraping pen	
2	Conductonaut 1g (Liquid Metal)	<ul style="list-style-type: none">▪Please store it in the environment of 10 ~ 40 °C.▪Please keep cover tightly closed until ready for next time use.▪Shipping category : Dangerous Goods.
3	2023 Intel Raptor Lake H45 steel plate	
4	Stainless steel plate (60mm*20mm*0.2t)	
5	95% alcohol	
6	Dust-free cloth	
7	Dust-free cotton swab//class 100 (100pcs)	


Disassembly Notice



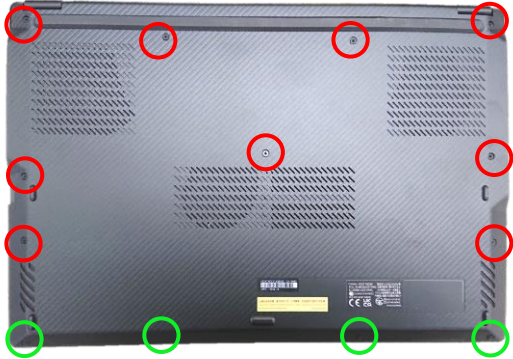
The device has an Ambient Light Sensor (ALS) for power-off protection function.

Step 1 : Remove screws *13pcs.

Step 2 : Using plastic blade to pry the bottom case.

Screws	QTY	Spec	Torque (kgf-cm)
 	9	M2*9.5L (4.5,0.8) (K) #1	2.0±0.1
 	4	M2*3.5L (4.5,0.8) (K) #1	2.0±0.1

1

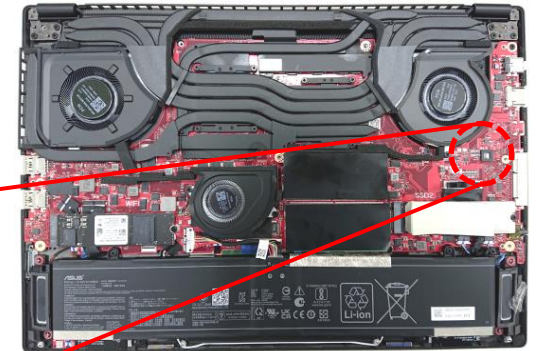
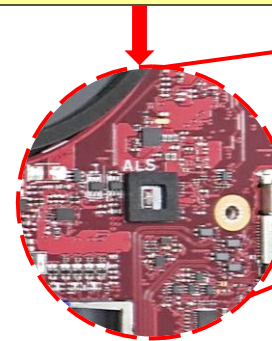


2



Ambient Light Sensor (ALS):

1. After removing the BOTTOM CASE, the Ambient Light sensor detect light, system will automatically power off for protection.
2. Make sure assemble bottom case back and plug in AC adapter, then you can power on normally.



Please follow above arrow direction with using plastic blade to pry bottom case in each blue circle location. (To avoid the bottom case hook, please prying at each blue circle location.)

Start

⚠ To avoid the bottom case hook, don't insert plastic blade in each red circle.

Disassembly Notice



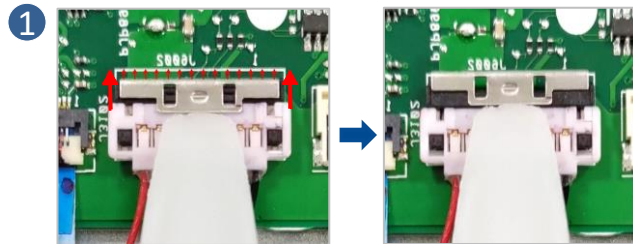
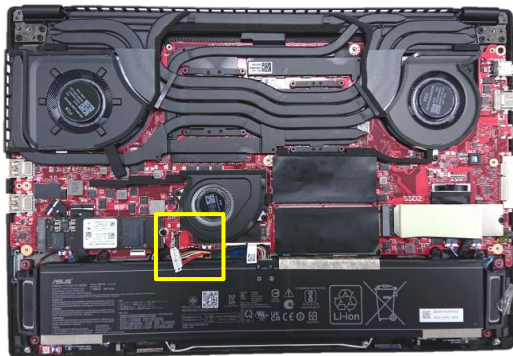
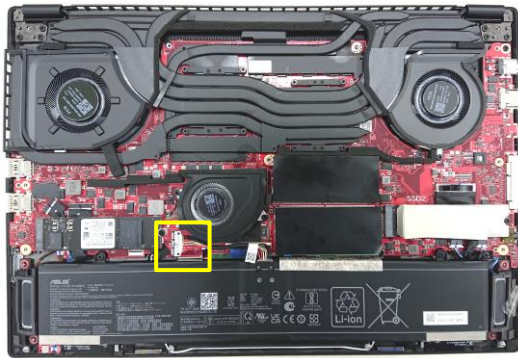
The device has an Ambient Light Sensor (ALS) for power-off protection function.

⚠ Before disassembly battery connector, please be sure to pull out adapter and disconnect the battery more than ten seconds in order to avoid IC damage.

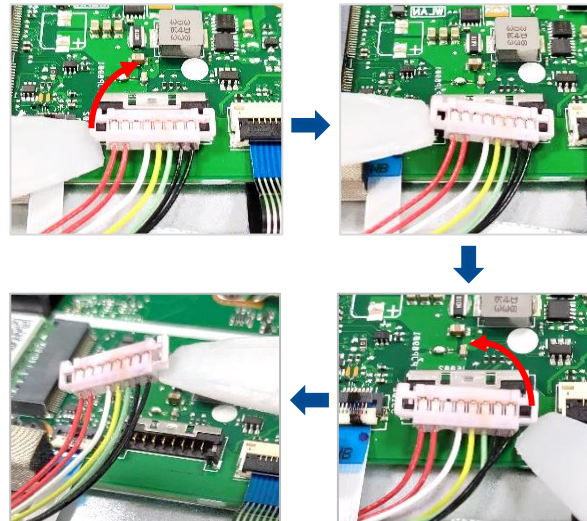
Step 1 : Use the non-conductive pry tool to push iron sheet.

Step 2 : Use the non-conductive pry tool to disconnect battery connector.

Note : Please disconnect the red cable side first.



2 Please disconnect the red cable side first!

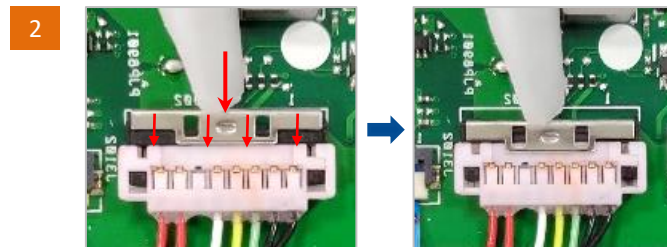
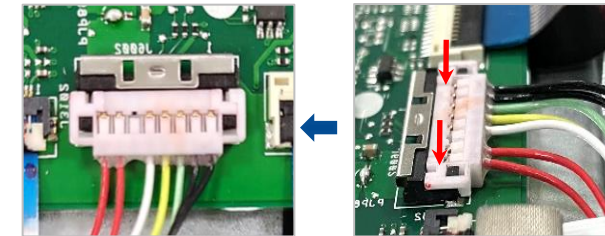
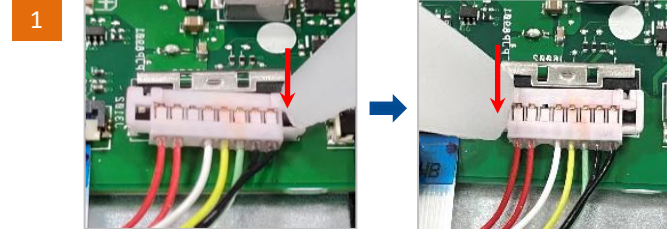


Assembly Notice

⚠ To prevent getting a short circuit or an electric shock accident, please follow steps below to connect the battery connector.

Step 1 : Use the non-conductive pry tool to connect the black cable side first, then connect the red cable side.

Step 2 : Use the non-conductive pry tool to push the iron sheet.




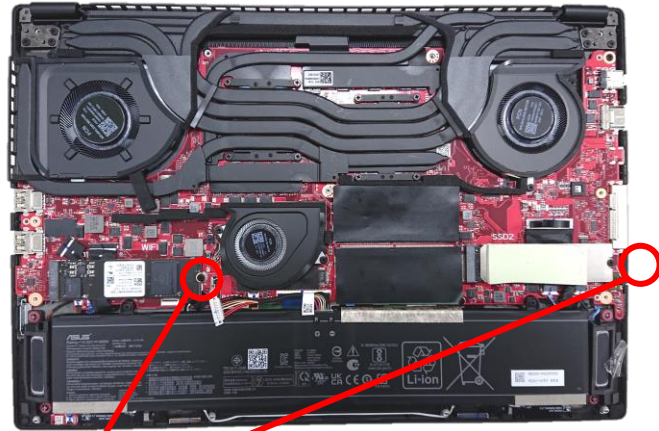
Disassembly Notice



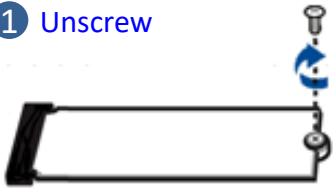
The device has an Ambient Light Sensor (ALS) for power-off protection function.

- Step 1 : Remove the screw *2pcs.
- Step 2 : Remove SSD module (SSD1).
- Step 3 : Remove SSD module (SSD2).
- Step 4 : Remove SSD THERMAL PAD.
- Step 5 : Remove SSD ABSORBER from both side of SSD Card.

Screws	QTY	Spec	Torque (kgf-cm)
	2	M2*3.5L (4.5,0.8) (K) #1	1.5±0.1



1 Unscrew



2 Remove (SSD1)



3 Remove (SSD2)



4 Remove

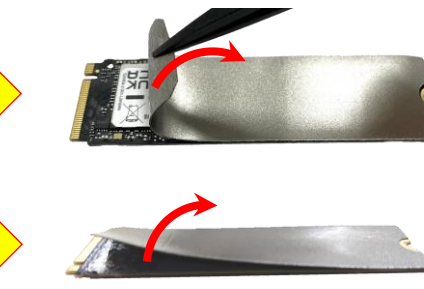
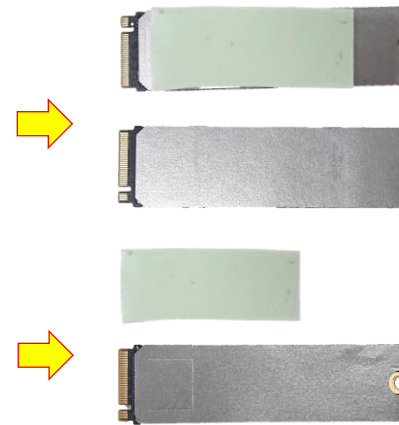


5 Remove

(Front)

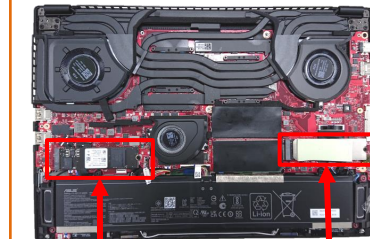


(Rear)



Assembly Notice

When required install SSD, please follow the order below to install SSD.



SSD1

SSD2

	SSD 1	SSD 2
One SSD		1
Two SSD	1	2



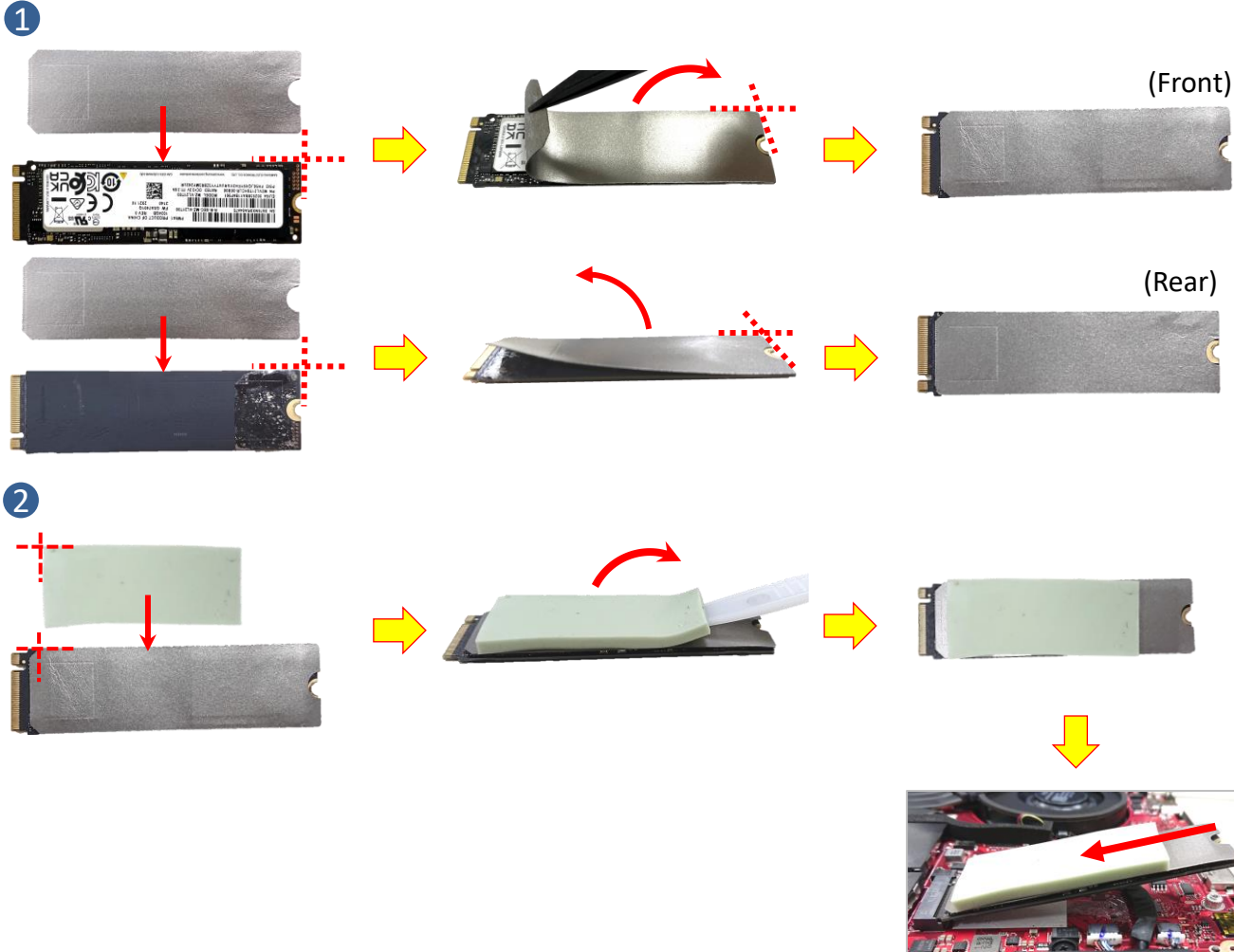
Assembly Notice



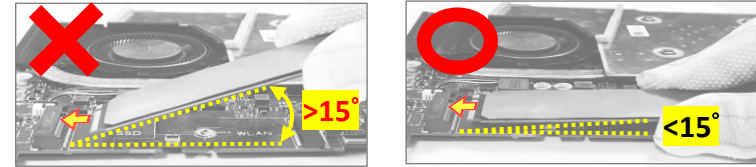
The device has an Ambient Light Sensor (ALS) for power-off protection function.

When installing SSD, please follow the steps below.

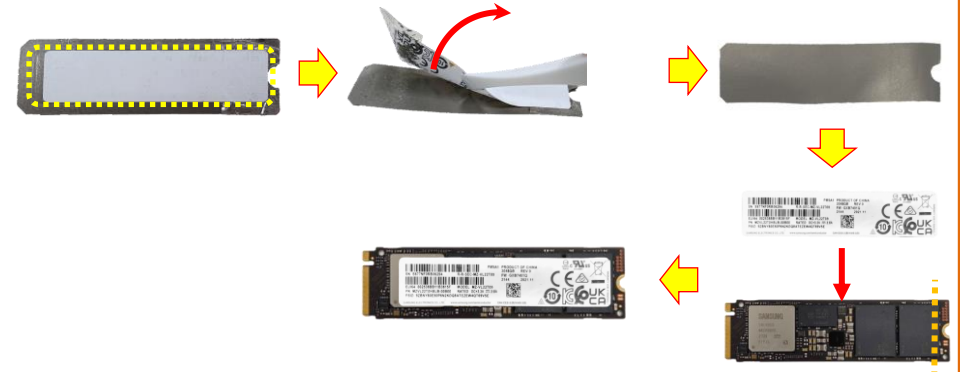
1. Align and paste ABSORBER on SSD Card for both side of front and rear.
2. Align and paste SSD Thermal Pad on SSD Card, and then install SSD Card into the module slot.



⚠ When installing the SSD, please keep the SSD less than 15 degrees with motherboard, and then insert the SSD.



⚠ When disassembling SSD ABSORBER, please check whether SSD label is on the back side of ABSORBER. If yes, please take the SSD label off and put it back on the SSD Card.



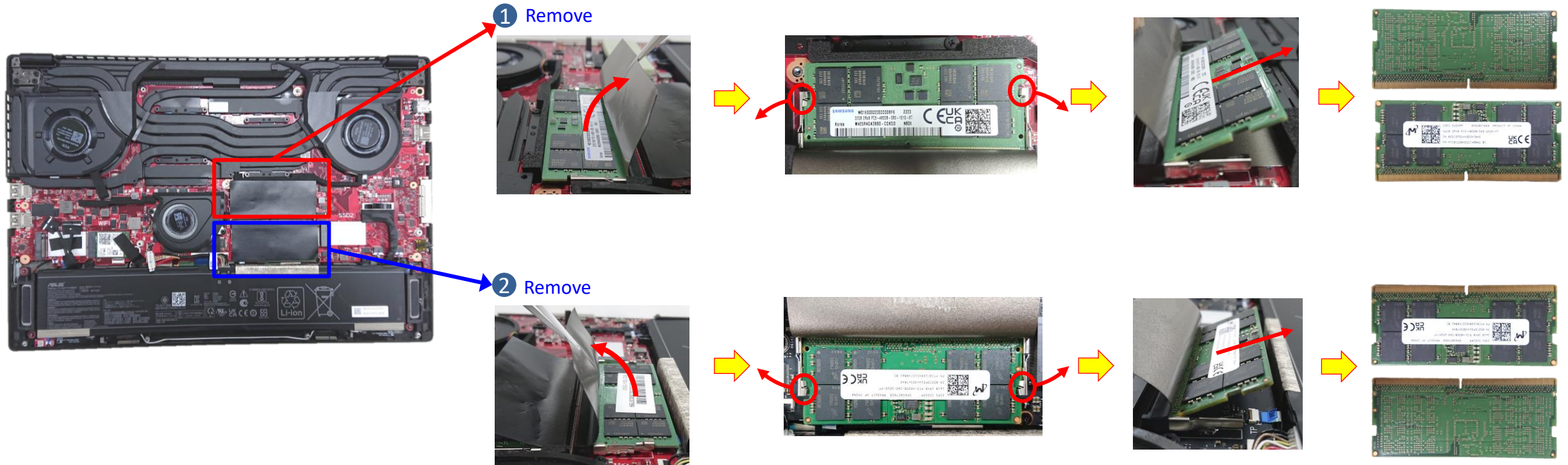
Disassembly Notice



The device has an Ambient Light Sensor (ALS) for power-off protection function.

Step 1 : Open up SODIMM CONN ABSORBER, then unlock and remove the RAM module.

Step 2 : Open up SODIMM CONN ABSORBER, then unlock and remove the RAM module.



Assembly Notice

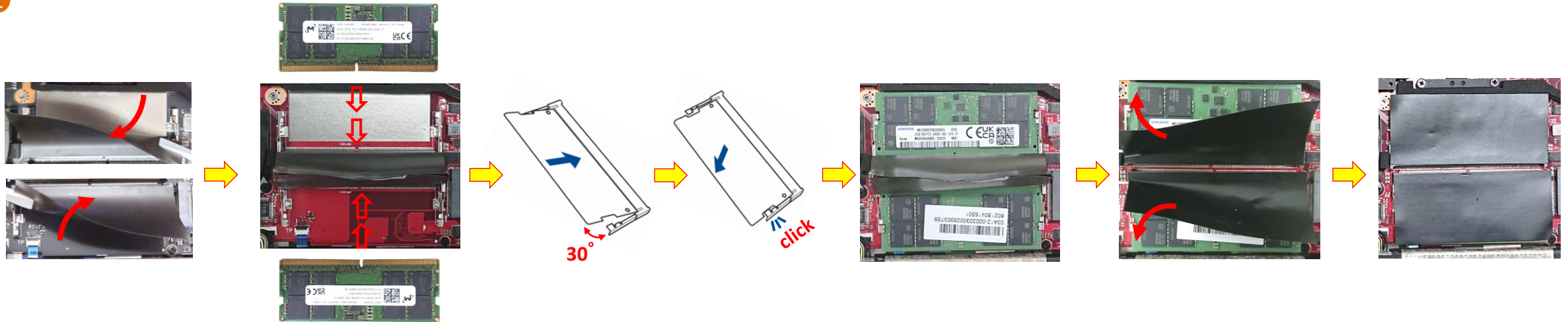


The device has an Ambient Light Sensor (ALS) for power-off protection function.

When installing DDR, please follow the steps below.

1. First open up SODIMM CONN ABSORBER, align and insert RAM Module at 30° into the memory slot. After inserted properly, push down the RAM Module until it clicks in place, then cover SODIMM CONN ABSORBER back.

1



Disassembly Notice





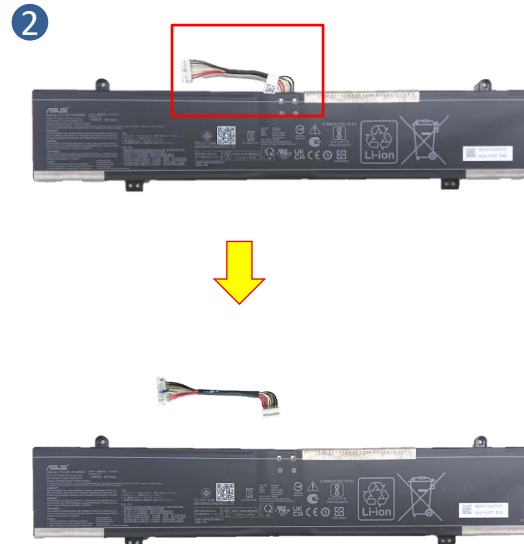
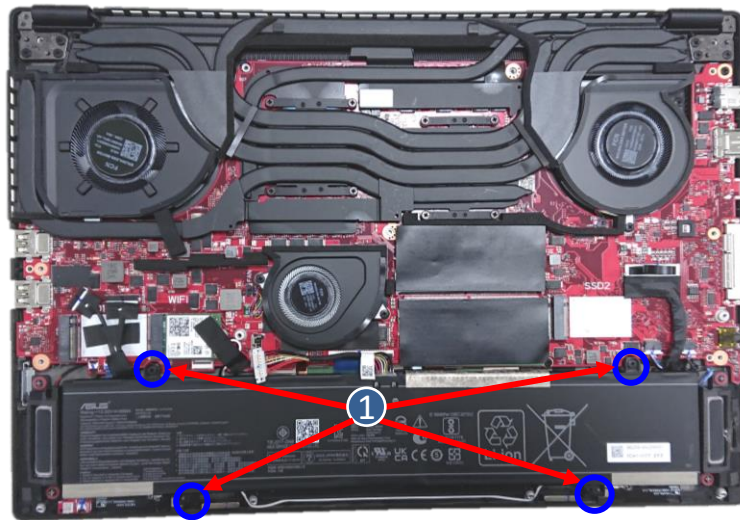
The device has an Ambient Light Sensor (ALS) for power-off protection function.

⚠ Before disassembly battery connector, please be sure to pull out adapter and disconnect the battery more than ten seconds in order to avoid IC damage.

Step 1 : Remove the screws *4pcs.

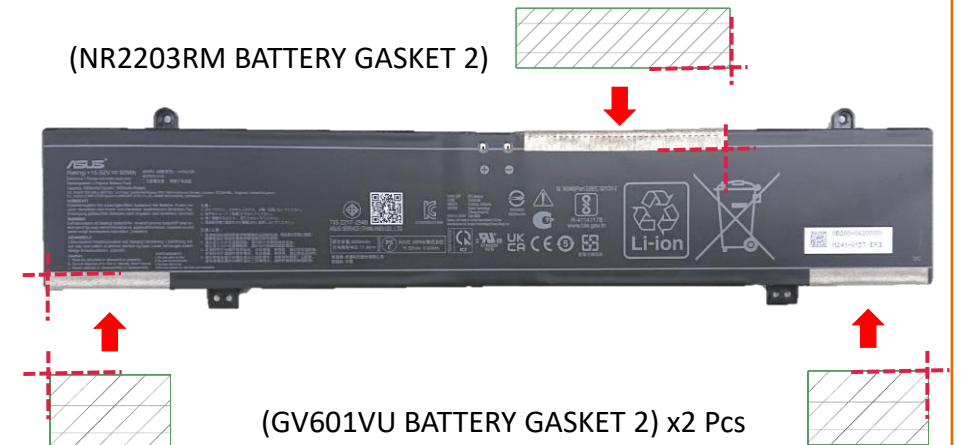
Step 2 : Take out the Battery and then remove the Battery cable.

Screws	QTY	Spec	Torque (kgf-cm)
 	4	M2*3.5L (4.5,0.8) (K) #1	2.0±0.1



Assembly Notice

⚠ When replace new battery, please according to the image below to paste new NR2203RM and GV601VU BATTERY GASKET 2 on battery.



Disassembly Notice

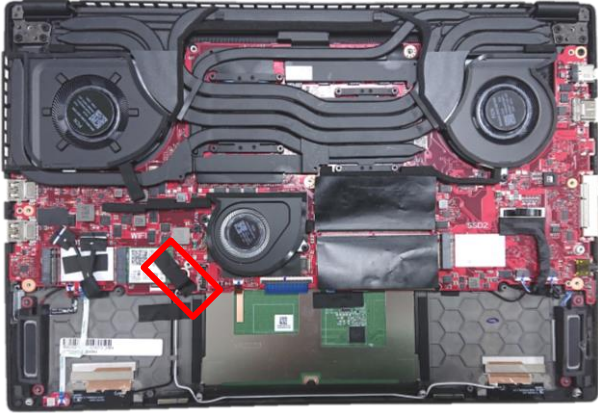


The device has an Ambient Light Sensor (ALS) for power-off protection function.

Step 1 : Tear off the CABLE Tape .

Step 2 : Disconnect WIFI ANTENNA Cables and remove the screw *1pc, then remove WIFI Card.

① Tear off (Red mark)





② Unscrew (Green circle) & Disconnect (Red circle)



Remove

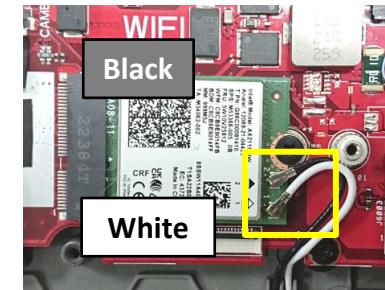


(WIFI CARD)

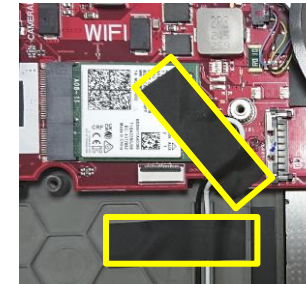
Screws	QTY	Spec	Torque (kgf-cm)
 	1	M2*3.5L (4.5,0.8) (K) #1	1.7±0.1

Assembly Notice

⚠ Please according to the image below to assemble WIFI MAIN and AUX Antenna cables.



⚠ Please according to the location below to paste CABLE Tapes, and fix up WIFI MAIN and AUX cables.



Disassembly Notice



The device has an Ambient Light Sensor (ALS) for power-off protection function.



Step 1 : Disconnect SYS FAN connector and remove screws *2pcs, then remove SYS FAN.

Step 2 : Release GA503QS Cable Tape *1 pc.

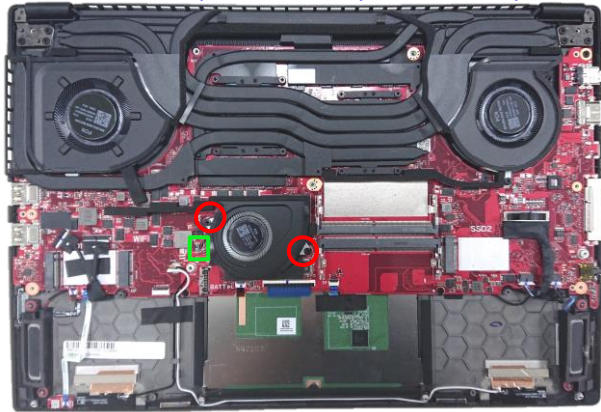
Step 3 : Disconnect connector *10pcs.

Step 4 : Remove screws *5pcs.

Step 5 : Remove Mainboard, Thermal Module and FAN together.

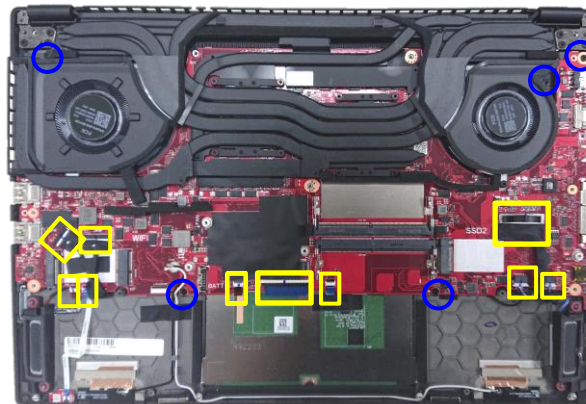
Screws	QTY	Spec	Torque (kgf-cm)
	2	M2*3.5L (4.5,0.8) (K) #1	1.7±0.1
	5	M2*4.5L (4.5,0.8) (K) #1	2.0±0.1

① Disconnect(Green mark)& Unscrew(Red circle)

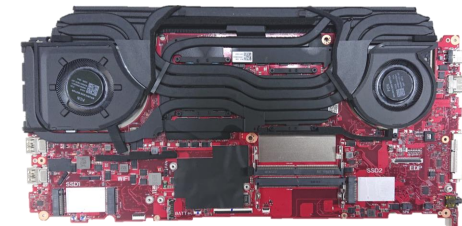
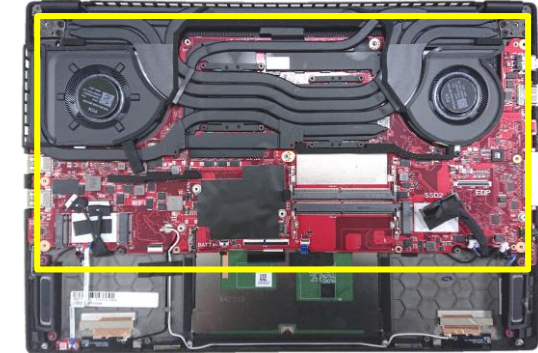


③ Disconnect (Yellow mark)

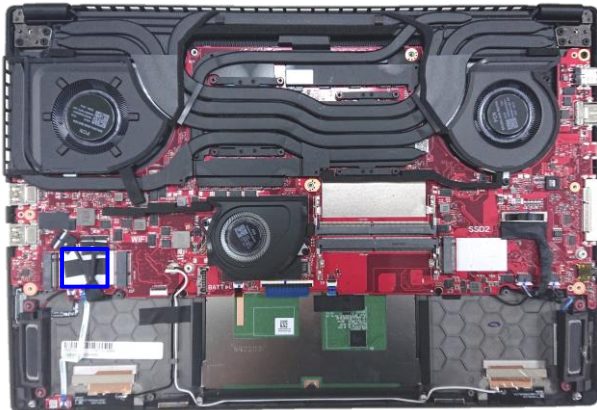
④ Unscrew (Blue mark)



⑤ Remove module (MB+Thermal+FAN)



② Release (Blue mark)



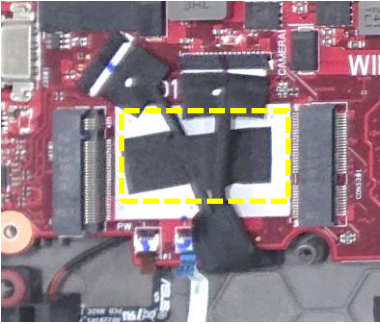
Assembly Notice



The device has an Ambient Light Sensor (ALS) for power-off protection function.

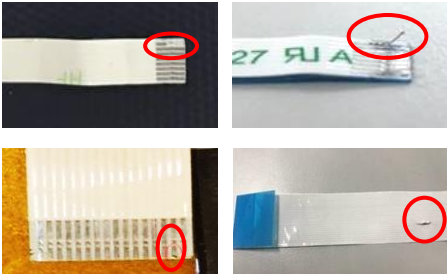
⚠ When reconnect CAM Touch Cable, please follow the location below to paste GA503QS Cable Tape.

*Please paste Tape under White area.



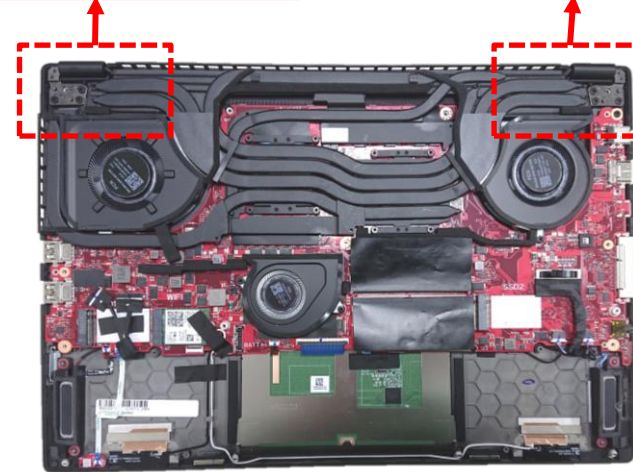
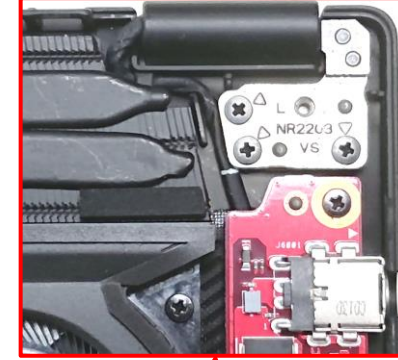
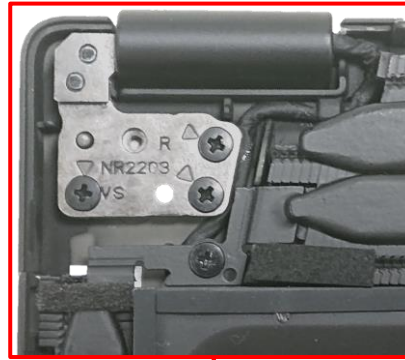
⚠ If FFC is damage during disassembly, please replace new one.

Here are some samples of FFC damage:



⚠ When Main-Board and Thermal module assembly, please follow the location below to fix CAM Touch Cable and EDP Cable.

* Please check both cables are under hinges.



Disassembly Notice



The device has an Ambient Light Sensor (ALS) for power-off protection function.

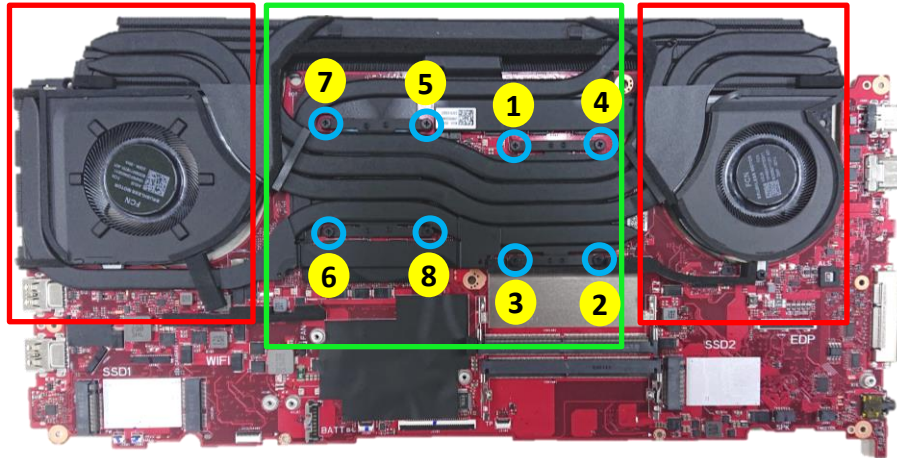
Step 1 : Please follow the reverse screw numbers to remove screws *8pcs, then remove Thermal Module from Main-board.

Step 2 : Disconnect FAN connector *2pcs.

Step 3 : Remove screws *4pcs, and then remove VGA FAN & CPU FAN.

⚠ Recommend that the force point is at green block, and pull up thermal module to take it out. Do not pull up at red block and also notice the thermal pipe should not have deformation.

① Unscrew



Remove



(THERMAL MODULE)

② Disconnect



③ Unscrew



Remove



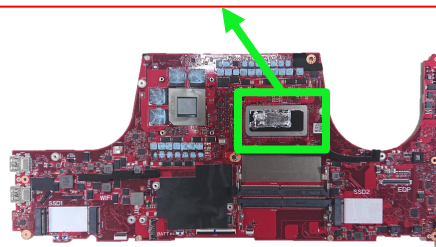
(GPU FAN)



(CPU FAN)



Please refer Repair Notice SOP for Liquid metal rework.



Screws	QTY	Spec	Torque (kgf-cm)
	8	M2*3.5L (4.5,0.8) (K) #1	1.7±0.1
	4	M2*3.5L (4.5,0.8) (K) #1	1.7±0.1

**Step-1**

- THERMAL MODULE Location:[VRAM/CHOKE/MOS]
Material: FCR-AS Grease
- MB Location:[GPU]
Material:
Main (GA500 Grease)
Substitute (PSX Thermal pad)

Step-2

Please refer **Repair Notice SOP** for **Liquid metal** rework when reassemble thermal module before.

- MB Location:[CPU]

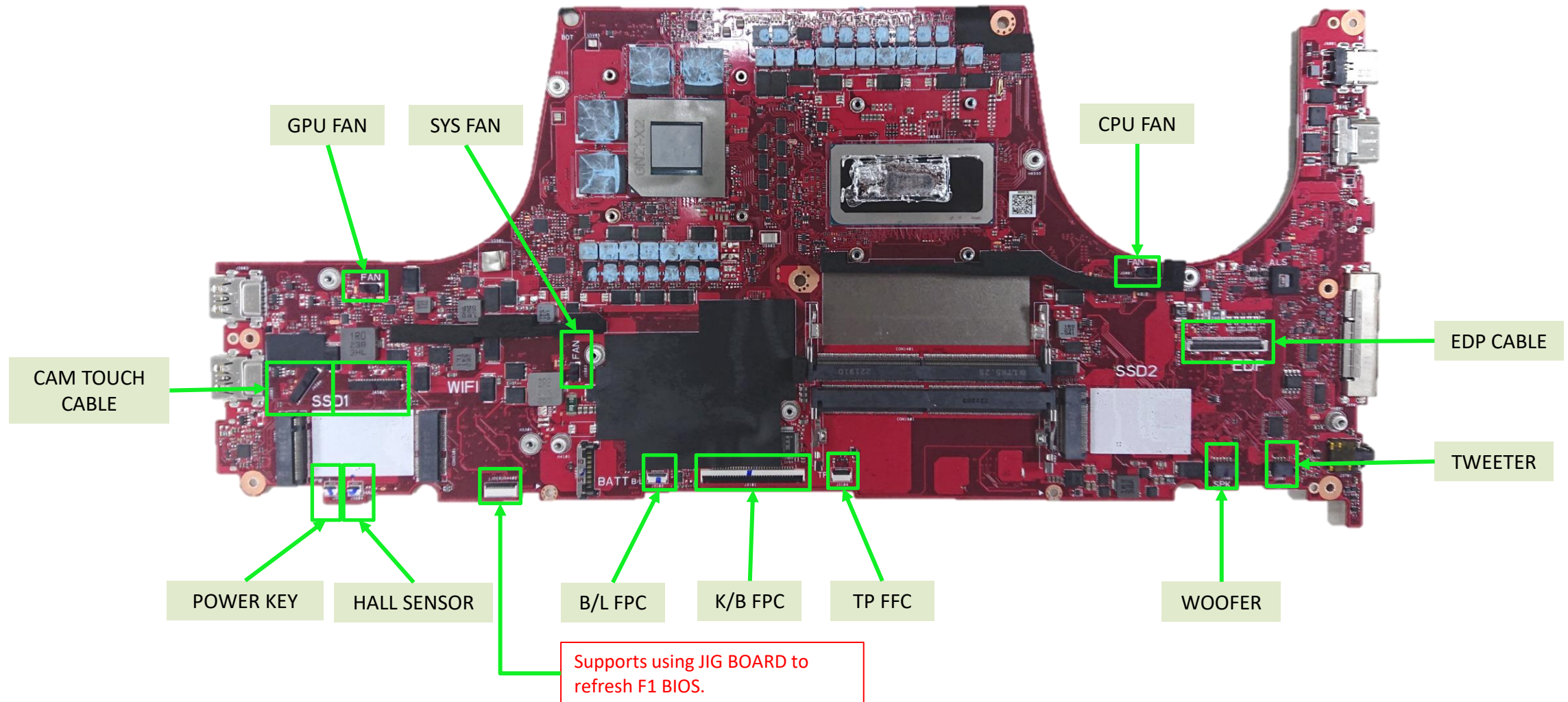
Step-3

Please follow the screws numbers to lock screws *8pcs.

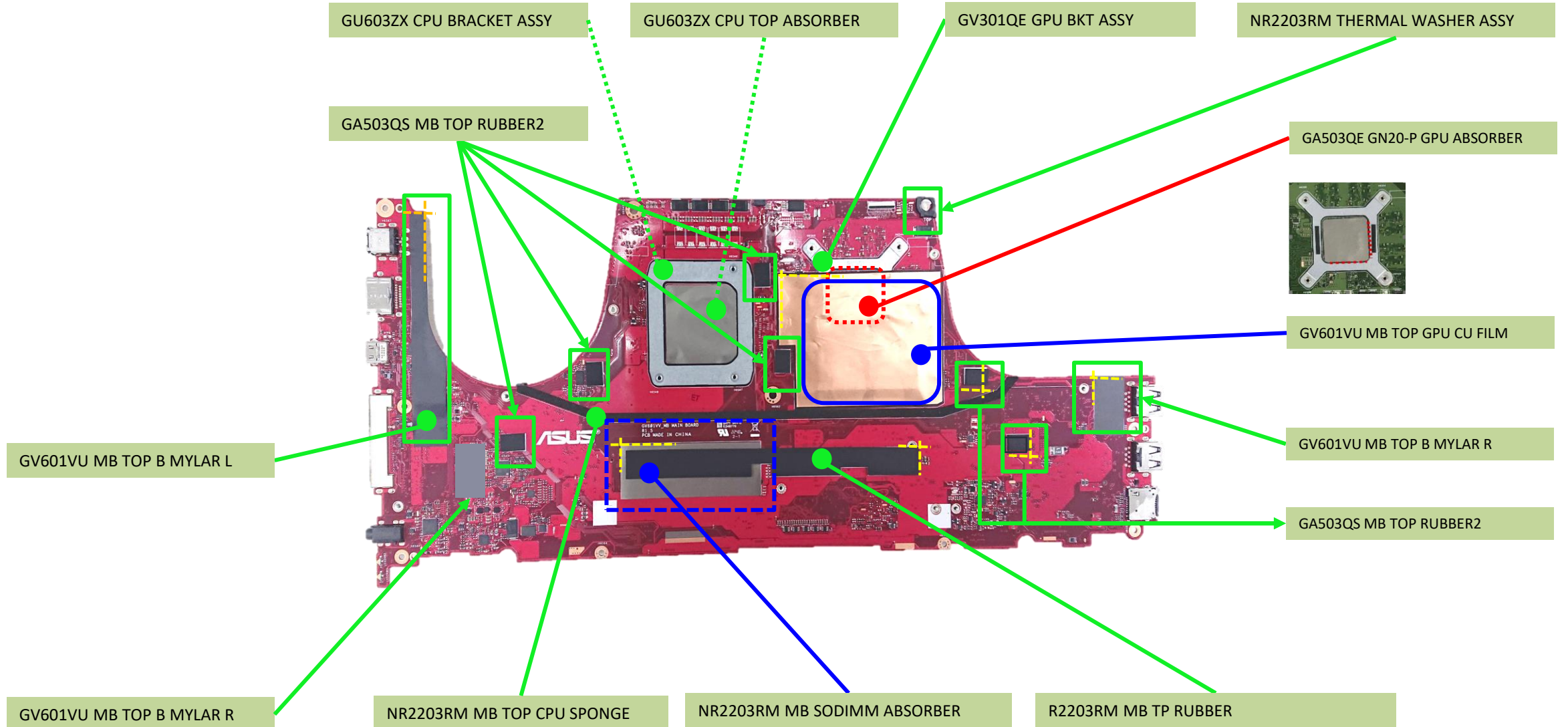
IMPORTANT! Thermal paste, thermal pads, liquid metal, or other thermal interface materials must be thoroughly removed and replaced if this component is removed. Ensure that replacement materials are available before proceeding, or contact an authorized service center for assistance.

WARNING! The heat sink contains liquid metal and should only be removed by authorized service personnel. Significant damage may occur to motherboard components if the heat sink is improperly removed.

Mainboard connector placement

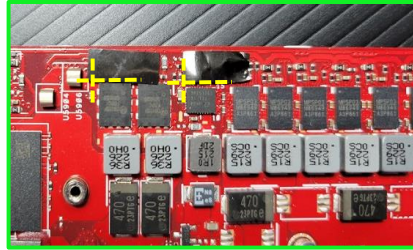


Materials on mainboard



Materials on mainboard

2Pcs
NR2203RM BTM POWER BOSS MYLAR



GV601VU BTM POWER BOSS MYLAR

GU603ZX CPU MYLAR

GV601VU GN21X2 GPU ABSORBER

GV601VU MB BOT CPU SPONGE

NR2203RM MB BOT GPU SPONGE

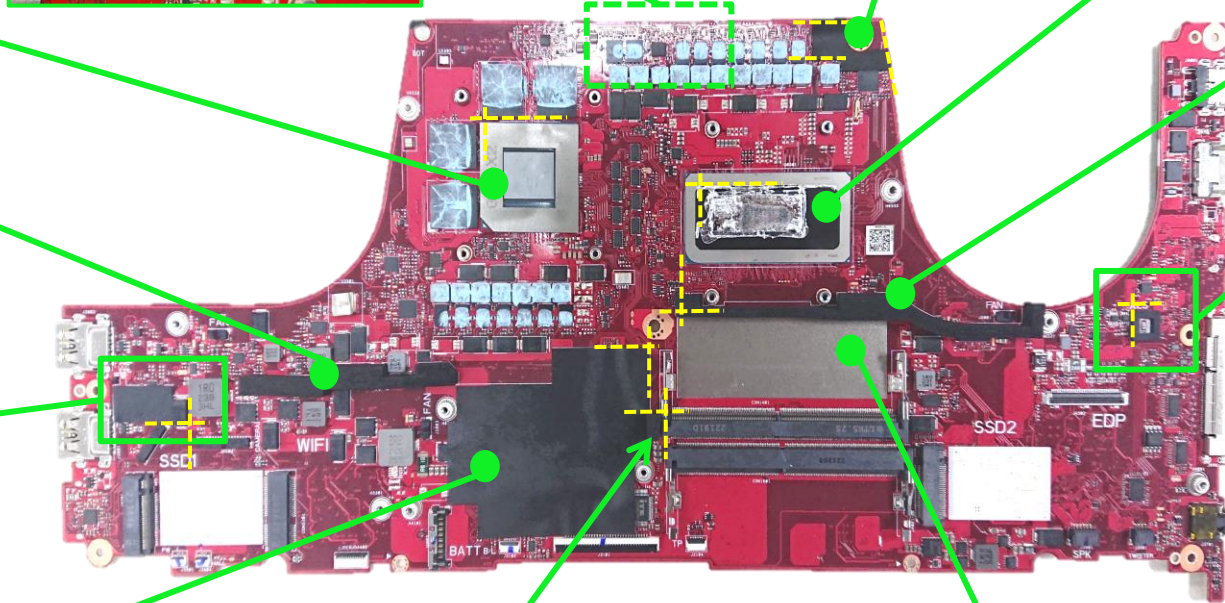
GV601VU MB ALS SPONGE

GV601VU MB BOT DIODE MYLAR

NR2203RM MB EC MYLAR

NR2203RM MB BOT DIMM SPONGE

NR2203RM MB SODIMM ABSORBER



Disassembly Notice



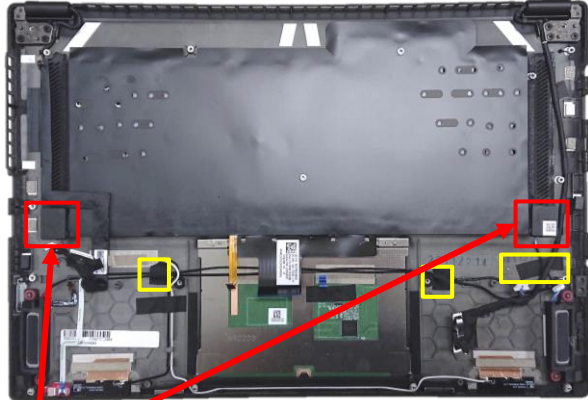
The device has an Ambient Light Sensor (ALS) for power-off protection function.

Step 1 : Release Tweeter Tapes *2pcs and Cable tape *1pc.

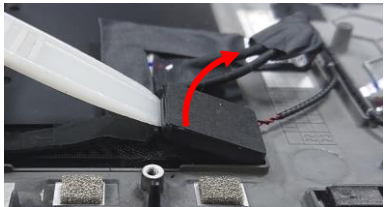
Step 2 : Take out the TWEETER and remove it.

Step 3 : Remove WOOFER.

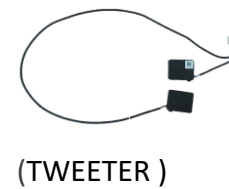
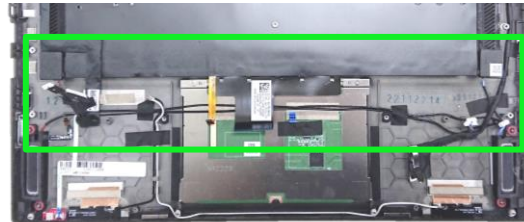
① Tear off (Yellow mark)



② Take out (Red mark)

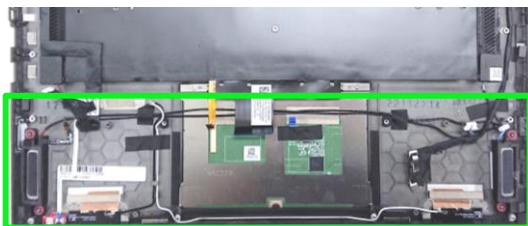


Remove



(TWEETER)

③ Remove

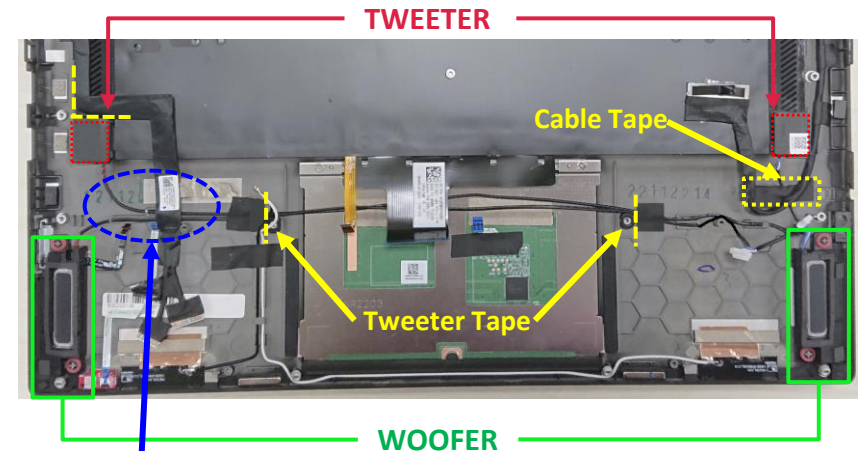


(WOOFER)

Assembly Notice



When Tweeter and Woofer assembly, please follow the location below to tidy up cables, and paste Tweeter Tapes and Cable tape.



Disassembly Notice



The device has an Ambient Light Sensor (ALS) for power-off protection function.

Step 1 : Remove HALL SENSOR BOARD and FFC, then disconnect HALL SENSOR FFC *1pc.

Step 2 : Remove POWERKEY FPC and POWER KEY BRKT ASSY *1pc.

Step 3 : Remove POWERKEY *1pc.



1 Remove



(HALL SENSOR FFC)

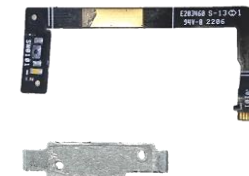
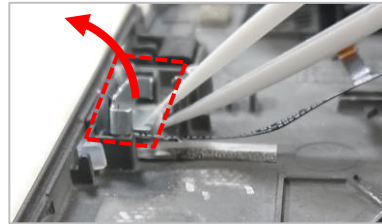


(HALL SENSOR BD)

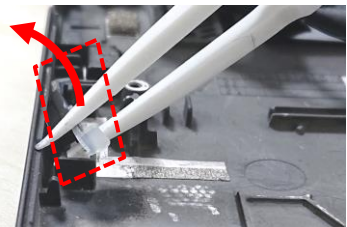
(POWERKEY FPC)

(POWERKEY BRKT ASSY)

2 Remove



3 Remove



(POWERKEY)



Important Repair Notice

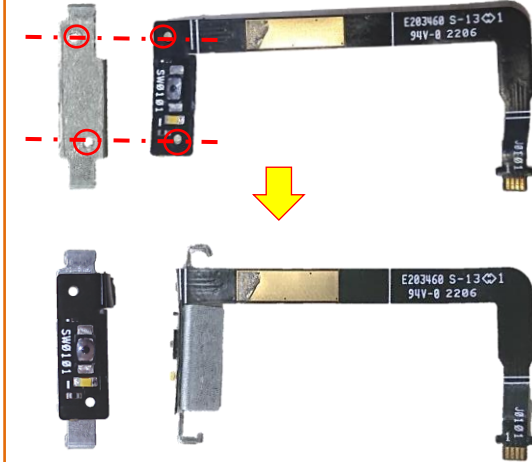
Module(L2) or Main-Board(L3) repair, if require a device or Main-Board power on, please must assembly **HALL SENSOR Board**, then connect power (Battery/ AC Adapter). After that, you can start up it.

*Notice: If **HALL SENSOR Board** is not assembled, the power key will be unable to work.

Assembly Notice

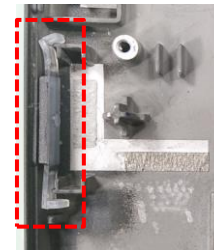


When POWERKEY_FPC assembly, please follow the location below to fix on POWER KEY BRKT ASSY.

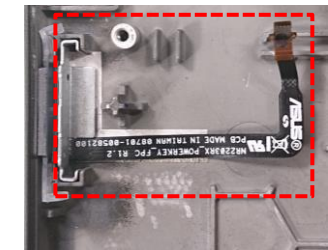


When Power Key and Power Key BRKT ASSY assembly, please follow the location below to fix

* Power Key



* Power Key BRKT ASSY



Disassembly Notice



The device has an Ambient Light Sensor (ALS) for power-off protection function.

Step 1 : Tear off Cable Tape and disconnect TP FFC.

Step 2 : Remove screws *3pcs, and then remove TOUCHPAD.

Step 3 : Remove screws *6pcs, and release ACETATE Clothes and CONDUCTIVE Tape.

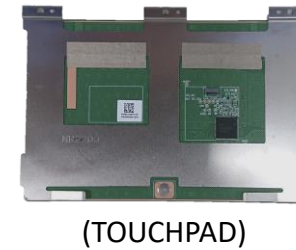
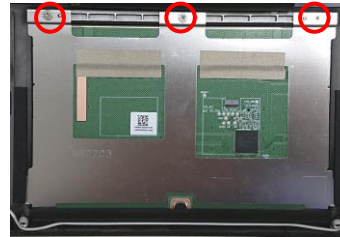
Step 4 : Flip up the and remove the Keyboard Module.

Screws	QTY	Spec	Torque (kgf-cm)
	3	M2*2.5L (4.5,0.5) (K) #1	2.0±0.1
	6	M2*3.5L (4.5,0.8) (K) #1	2.0±0.1

① Tear off (Yellow mark) and disconnect



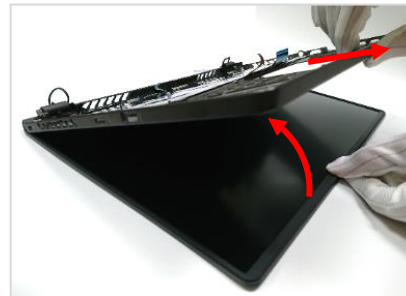
② unscrew



③ Unscrew and Release Tape (Blue mark)



④ Flip up and Remove



Assembly Notice

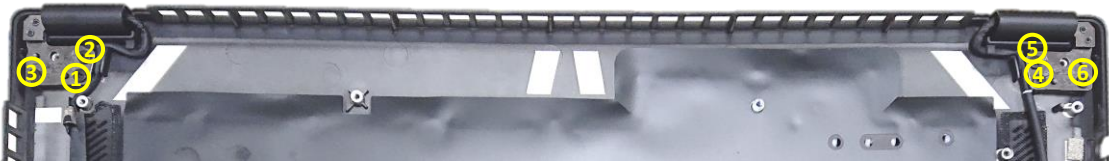


The device has an Ambient Light Sensor (ALS) for power-off protection function.

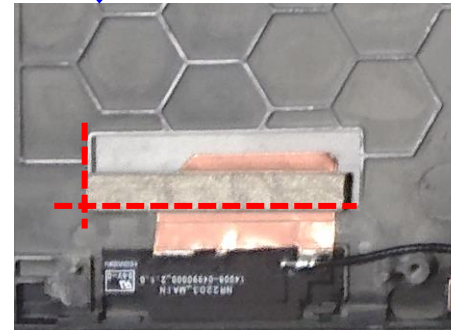
- ⚠ When assembly the KEYBOARD Module, please follow the image below to tidy up cables, and paste ACETATE Clothes and CONDUCTIVE Tape.
- *For the Green mark, please keep the white line (On Cable) at the same location.



- ⚠ When assembly the HINGE on Keyboard Module, please follow the order below to tighten screws.



- ⚠ When assembly the WIFI ANTENNA, please follow the location below to tidy up cables and paste tape*1pc, battery gasket*2pcs.



Disassembly Notice

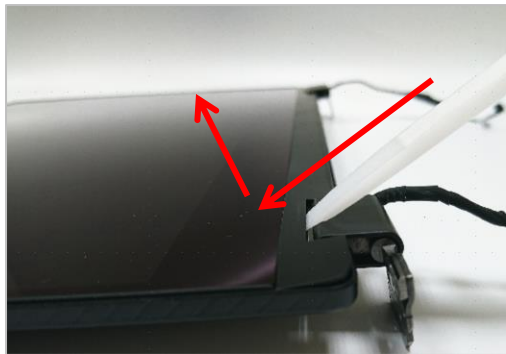


The device has an Ambient Light Sensor (ALS) for power-off protection function.

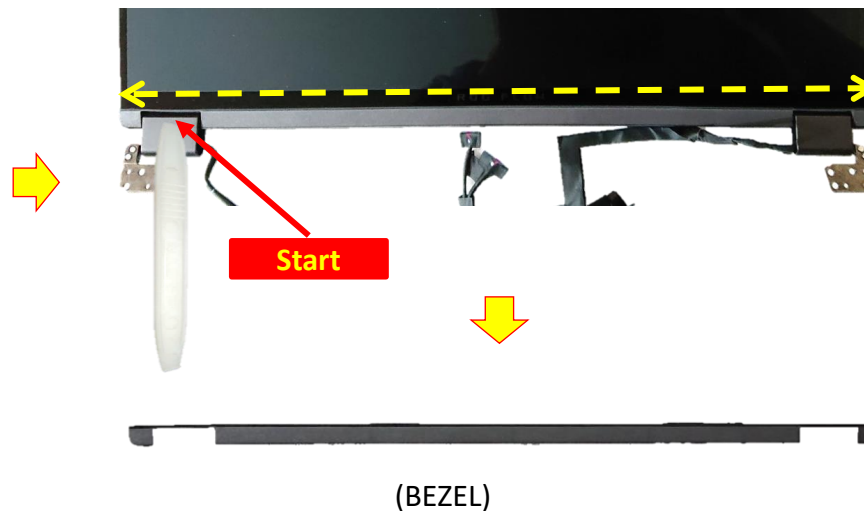
Step 1 : Use plastic blade to pry the LCD BEZEL.



1 Pry the Bezel



Move the plastic blade to pry and separate the Bezel

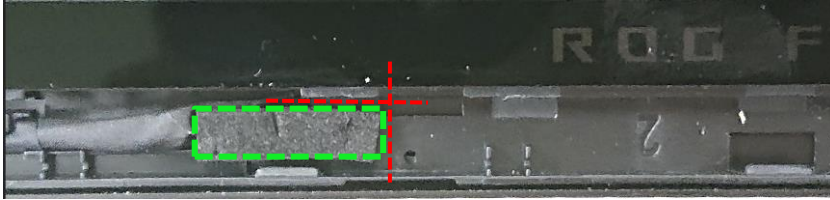


Assembly Notice



The device has an Ambient Light Sensor (ALS) for power-off protection function.

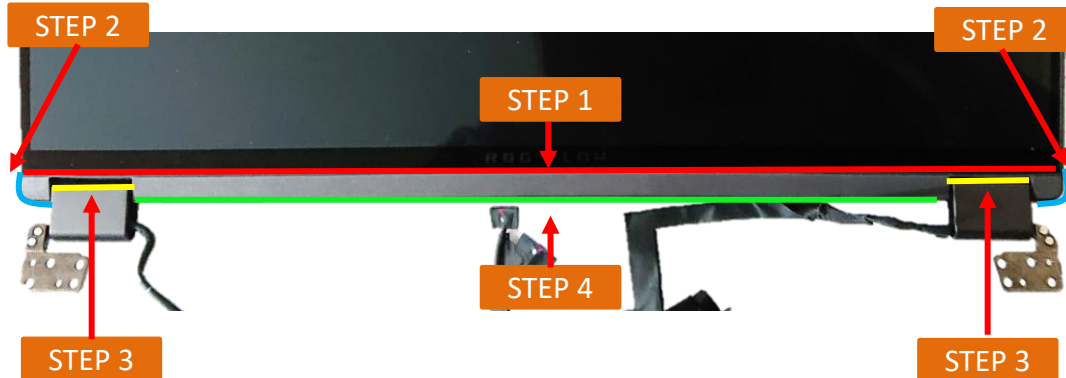
⚠ When LCD BEZEL assembly, please follow the location below to paste LCD SPONGE first.



⚠ Please follow the yellow mark to tidy up EDP cable and TOUCH Cable.
Please make sure both cables are laid out into HINGE CAP.



⚠ **When assembly the BEZEL:**
Please follow the order below to install and press BEZEL.
STEP 1 : Install the upper side BEZEL.
STEP 2 : Pressing the BEZEL left and right corner side.
STEP 3 : Pressing the HINGE gap.
STEP 4 : Pressing lower BEZEL side.



Disassembly Notice



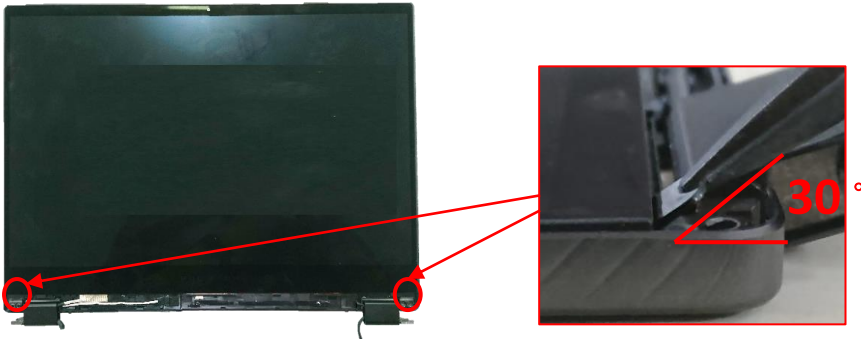
The device has an Ambient Light Sensor (ALS) for power-off protection function.

Step 1 : Pull out LCD adhesive *2pcs.

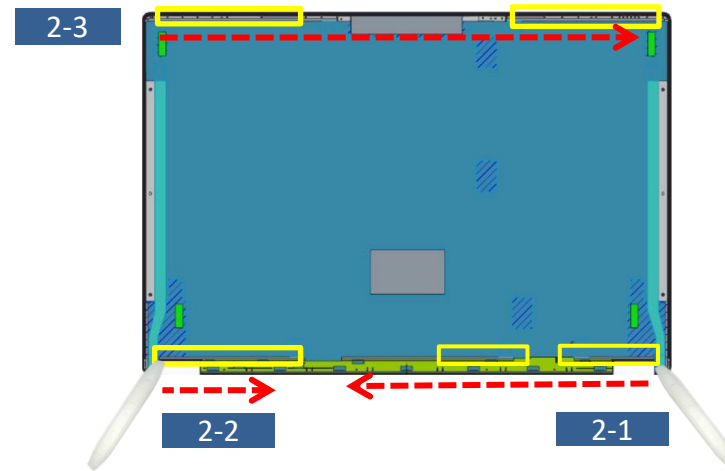
Step 2 : Using plastic blade to separate and teardown the panel.

Step 3 : Remove LCD PANEL and EDP Cable.

- ① Please pull the adhesive up about 30 degree slowly, and don't pull out the tape in vertical direction!

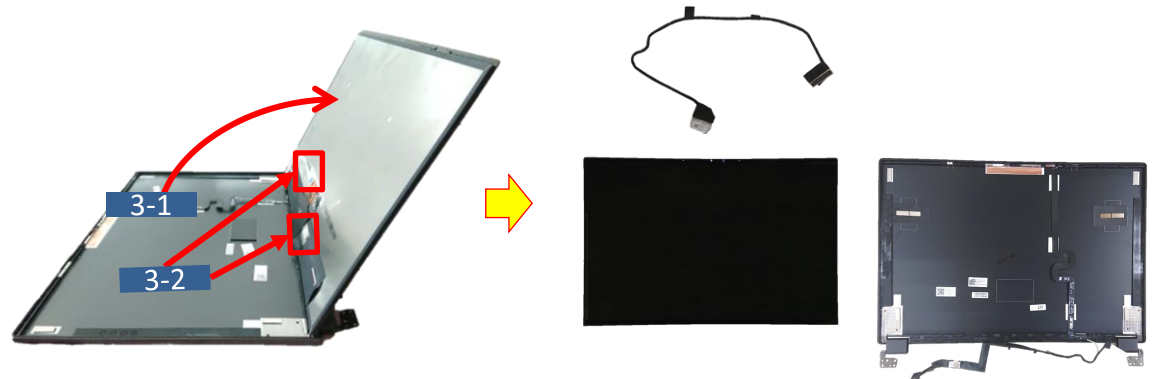


- ② Due to some adhesive (Yellow mark) behind the panel, please separate panel by using plastic blade start from the bottom left and right side. Please follow the direction of the red arrow to move plastic blade slowly to separate panel from LCD COVER.



Insert plastic blade between Panel and LCD Cover.

- ③ Flip up the panel, and disconnect the EDP cable.



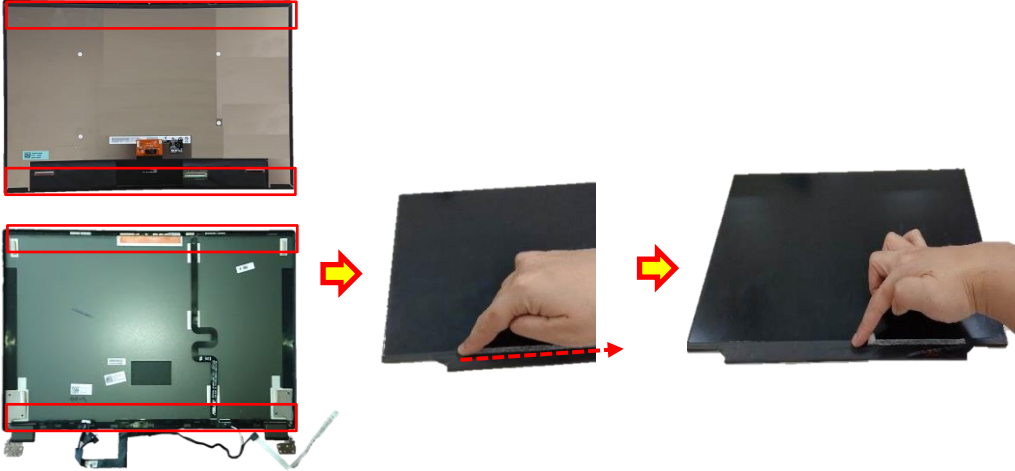
Assembly Notice



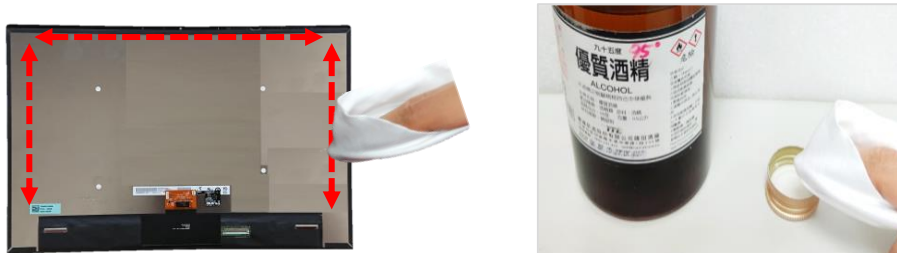
The device has an Ambient Light Sensor (ALS) for power-off protection function.

A When reuse the LCD PANEL or LCD Cover:

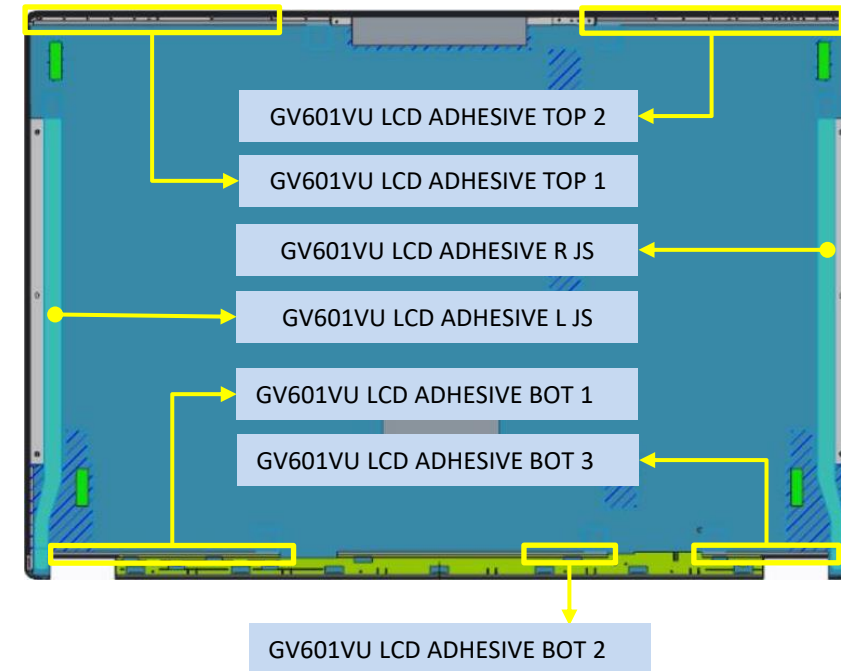
Please use the fingertip to clean the residual adhesive on back side of PANEL and LCD COVER.

**B** Clean the Panel Mylar:

Before assembling the LCD panel, use a dust-free cloth and a small amount of alcohol to clean the panel back side.

**C** When reuse the LCD COVER:

Please paste below new LCD ADHESIVE *7pcs on LCD COVER.
(New LCD COVER already contains those ADHESIVE *7pcs (Yellow mark).



Assembly Notice



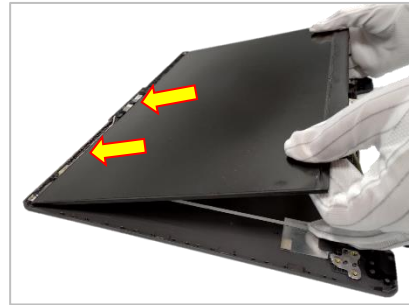
The device has an Ambient Light Sensor (ALS) for power-off protection function.

D When assembly the LCD PANEL:

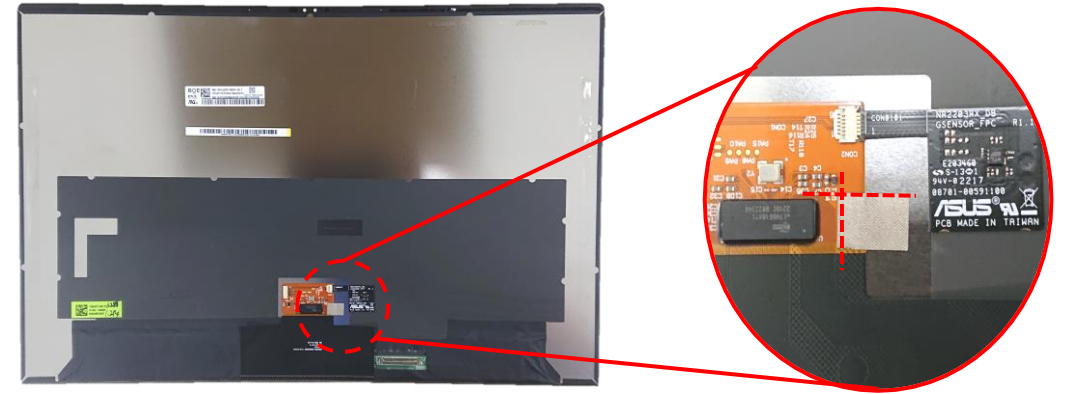
Step 1 : Remove release paper of LCD Adhesive *7pcs.

Step 2 : Connect cables well, and align the LCD to the upper side of LCD Cover then assembly.

Step 3 : Using thumb with Dust-free cloth to press and push panel.

F-1 Remove**F-2 Align****F-3 Press & Push**

When replace LCD PANEL, please follow the location below to paste TP GLASS UP ADHESIVE.



*Please put the LCD module on the desk flatly.

*Please press and push on panel upper and lower side each for 20 times at least.

Disassembly Notice



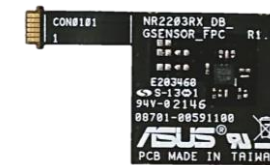
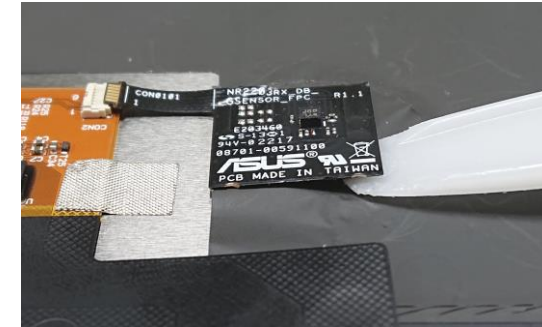
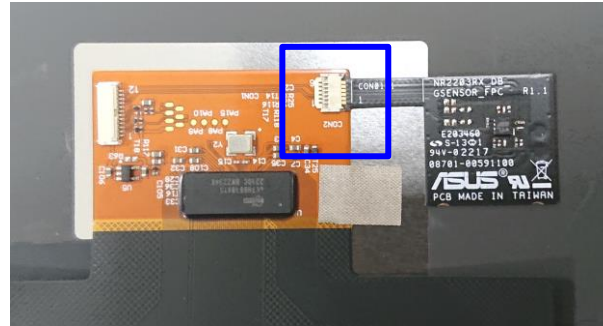
The device has an Ambient Light Sensor (ALS) for power-off protection function.

Step 1 : Disconnect GSENSOR FPC.

Step 2 : Take it out from panel backside.



① Disconnect



(GSENSOR FPC)

Disassembly Notice

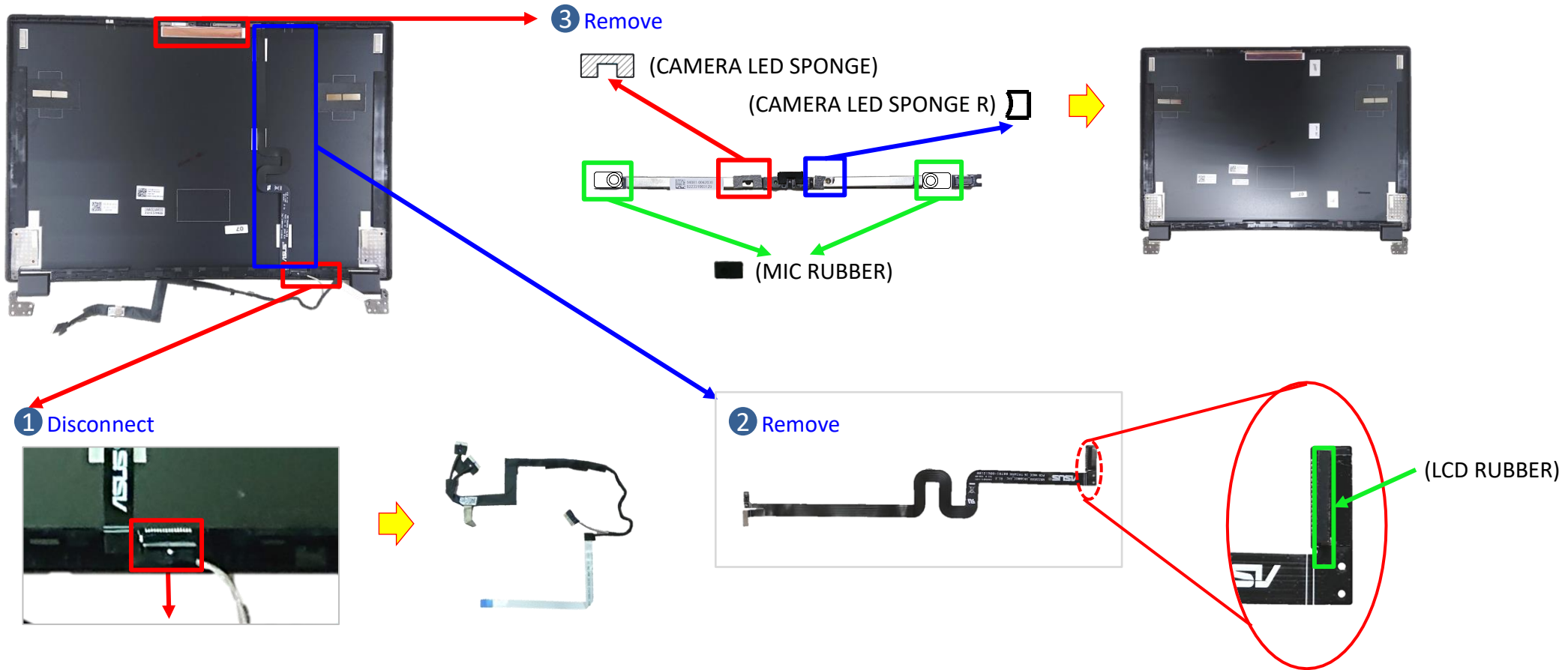


The device has an Ambient Light Sensor (ALS) for power-off protection function.

Step 1 : Disconnect CAM TOUCH Cable, and remove it.

Step 2 : Remove IRCAMMIC FPC *1pc, and then remove LCD RUBBER.

Step 3 : Remove CAMERA HD RGB/IR ARRAY MIC CR, MIC RUBBER *2pcs, and CAMERA LED SPONGE from LCD COVER.

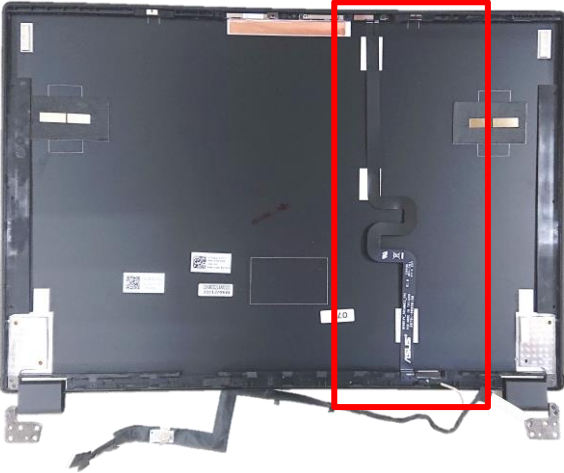


Assembly Notice



The device has an Ambient Light Sensor (ALS) for power-off protection function.

⚠ When IRCAMMIC FPC assembly, please follow the location below to fix FPC.



⚠ When replace CAMERA HD RGB/IR ARRAY MIC CR, please follow the location below to paste new CAMERA LED SPONGE.

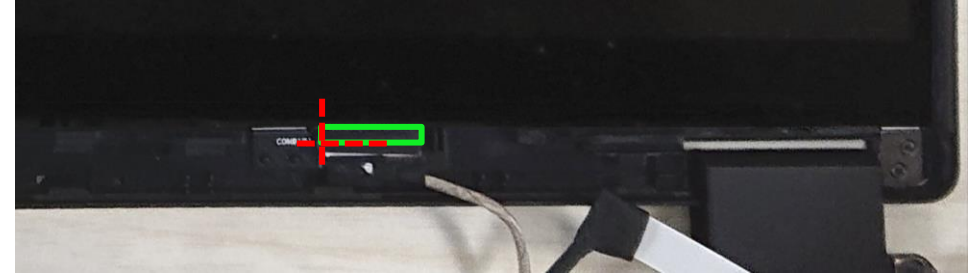
CAMERA LED SPONGE (Blue mark)/ CAMERA LED SPONGE R (Green mark)

*Do not cover the LED.

*The upper side need to align to the Frame, in case the light leakage.



⚠ When replace IRCAMMIC FPC, please follow the location below to fix LCD RUBBER.



⚠ When replace LCD COVER, please follow the location (Align at middle of camera) below to paste TP GLASS UP ADHESIVE2.

