

# **ASUS ROG Flow Z13 (GZ301Z) Series**

## **Service Guide**

## COPYRIGHT INFORMATION

No part of this manual, including the products and software described in it, may be reproduced, transmitted, transcribed, stored in a retrieval system, or translated into any language in any form or by any means, except documentation kept by the purchaser for backup purposes, without the express written permission of ASUSTeK COMPUTER INC. ("ASUS").

ASUS PROVIDES THIS MANUAL "AS IS" WITHOUT WARRANTY OF ANY KIND, EITHER EXPRESS OR IMPLIED, INCLUDING BUT NOT LIMITED TO THE IMPLIED WARRANTIES OR CONDITIONS OF MERCHANTABILITY OR FITNESS FOR A PARTICULAR PURPOSE. IN NO EVENT SHALL ASUS, ITS DIRECTORS, OFFICERS, EMPLOYEES OR AGENTS BE LIABLE FOR ANY INDIRECT, SPECIAL, INCIDENTAL, OR CONSEQUENTIAL DAMAGES (INCLUDING DAMAGES FOR LOSS OF PROFITS, LOSS OF BUSINESS, LOSS OF USE OR DATA, INTERRUPTION OF BUSINESS AND THE LIKE), EVEN IF ASUS HAS BEEN ADVISED OF THE POSSIBILITY OF SUCH DAMAGES ARISING FROM ANY DEFECT OR ERROR IN THIS MANUAL OR PRODUCT.

Products and corporate names appearing in this manual may or may not be registered trademarks or copyrights of their respective companies, and are used only for identification or explanation and to the owners' benefit, without intent to infringe.

SPECIFICATIONS AND INFORMATION CONTAINED IN THIS MANUAL ARE FURNISHED FOR INFORMATIONAL USE ONLY, AND ARE SUBJECT TO CHANGE AT ANY TIME WITHOUT NOTICE, AND SHOULD NOT BE CONSTRUED AS A COMMITMENT BY ASUS. ASUS ASSUMES NO RESPONSIBILITY OR LIABILITY FOR ANY ERRORS OR INACCURACIES THAT MAY APPEAR IN THIS MANUAL, INCLUDING THE PRODUCTS AND SOFTWARE DESCRIBED IN IT.

Copyright © 2024 ASUSTeK COMPUTER INC. All Rights Reserved.

## LIMITATION OF LIABILITY

Circumstances may arise where because of a default on ASUS' part or other liability, you are entitled to recover damages from ASUS. In each such instance, regardless of the basis on which you are entitled to claim damages from ASUS, ASUS is liable for no more than damages for bodily injury (including death) and damage to real property and tangible personal property; or any other actual and direct damages resulted from omission or failure of performing legal duties under this Warranty Statement, up to the listed contract price of each product.

ASUS will only be responsible for or indemnify you for loss, damages or claims based in contract, tort or infringement under this Warranty Statement.

This limit also applies to ASUS' suppliers and its reseller. It is the maximum for which ASUS, its suppliers, and your reseller are collectively responsible.

UNDER NO CIRCUMSTANCES IS ASUS LIABLE FOR ANY OF THE FOLLOWING: (1) THIRD-PARTY CLAIMS AGAINST YOU FOR DAMAGES; (2) LOSS OF, OR DAMAGE TO, YOUR RECORDS OR DATA; OR (3) SPECIAL, INCIDENTAL, OR INDIRECT DAMAGES OR FOR ANY ECONOMIC CONSEQUENTIAL DAMAGES (INCLUDING LOST PROFITS OR SAVINGS), EVEN IF ASUS, ITS SUPPLIERS OR YOUR RESELLER IS INFORMED OF THEIR POSSIBILITY.

## Disclaimer

ASUS is not responsible for direct, indirect, intentional or unintentional damages resulting from improper installation and operation.

## Safety precautions

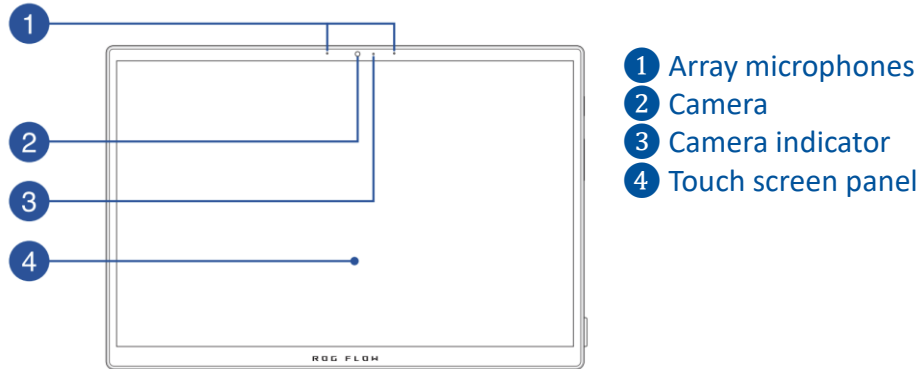
- Keep liquids or moisture away from your Notebook PC before installing or removing any components.
- Ensure to place your Notebook PC on a stable surface before installing or removing any components.
- Detach the clip or flap before removing the signal cables to prevent damage.
- Disconnect the power plug by pulling the plug evenly to avoid damage. Ensure to connect the signal cables in the correct orientation.
- Disconnect all power cables and remove the battery pack (if applicable) before cleaning your Notebook PC with liquid detergent to avoid risk of electric shock.
- Disconnect all power cables and remove the battery pack (if applicable) before installing or removing any components. Ensure to read and follow the instructions in the manual.
- Before handling components, use a grounded wrist strap or touch a safely grounded object to avoid damaging them due to static electricity.
- Keep liquids or moisture away from your Notebook PC to avoid short circuits.
- Hold components by the edges to avoid touching the ICs.
- Ensure to properly install all the components before connecting the AC power.
- Do not use power adapters or batteries from other devices to reduce the risk of injury to persons due to fire or explosion. Use only certified power adapters or batteries supplied by the manufacturer or authorized retailers.
- Ensure to install the correct screw models on your Notebook PC to prevent damage.

- [Service Overview](#)
- [ASUS ROG Flow Z13 \(GZ301Z\) Series Overview](#)
- [Components Top View](#)
- [Components Bottom View](#)
- [Repair Overview](#)
- [Appropriate Tools](#)
- [Keyparts and Related Parts](#)
- Disassembly Steps :
  - [KEYBOARD](#)
  - [SSD](#)
  - [LCD MODULE](#)
  - [BATTERY](#)
  - [SPEAKER](#)
  - [CAMERA CONNECT BOARD& REAR CAMERA MODULE 8M](#)
  - [FAN](#)
  - [USB BOARD](#)
  - [THERMAL MODULE& CAMERA HD FIX 3.3V CR](#)
  - [MAIN BOARD](#)
  - [WIFI ANTENNA \(With SIDE KEY\)](#)
  - [A COVER](#)

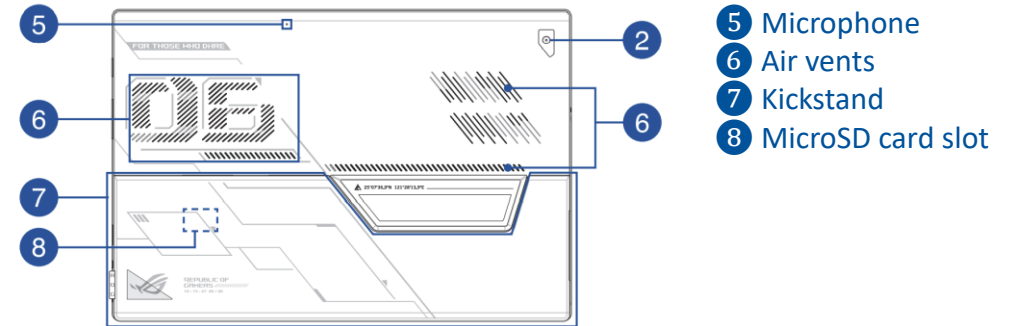
- **Carefully read through this Service Guide for a look at various components of the device before performing any service and repairs.**
- To provide the best service, we have provided the below information for technicians from distributors and resellers to perform the complete device disassembly and assembly. Before performing the procedures, please be sure to read through the overview in this service guide for component overview to avoid any unwarranted damages to the device hardware.
- The following contents include all part numbers mentioned in the service guide are **used for reference only**, if you need the exact part number for ordering, please refer to the Orderbook.
- Due to sales policy difference, the components might have different specifications on the same series product, please refer to E-manual by model.

Due to sales policy difference, the components may have different specifications on the same model. If you have any operational issues, please contact the service hotline.

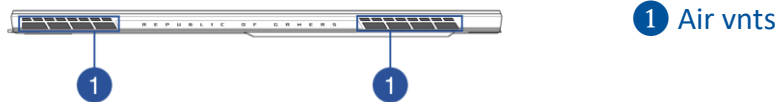
## Front View



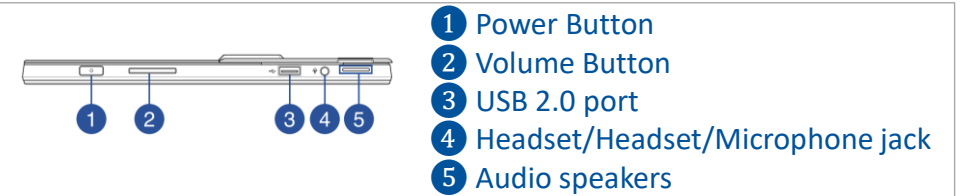
## Rear View



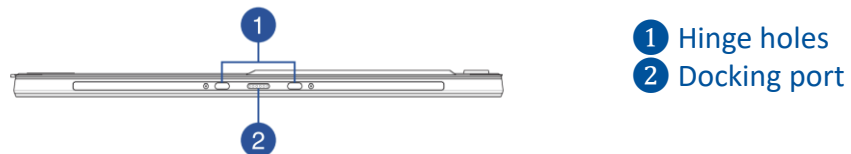
## TOP View



## RIGHT View



## Bottom View



## LEFT View



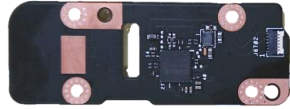
◆ A COVER ASSY



◆ BATTERY



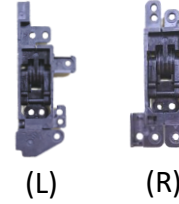
◆ CAM CONNECTOR\_BD



◆ CAMERA MODULE 8M



◆ HINGE



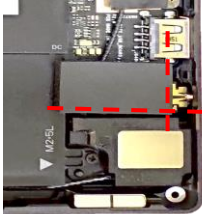
◆ FRONT CAM FPC



◆ LCD MODULE



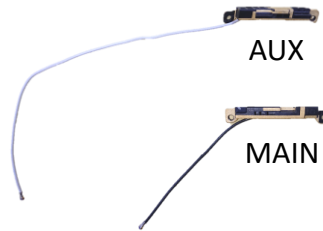
◆ BATTERY SPONGE



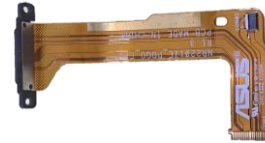
◆ USB BD



◆ Antenna



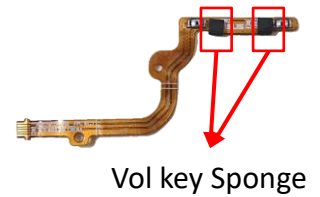
◆ POGO FPC



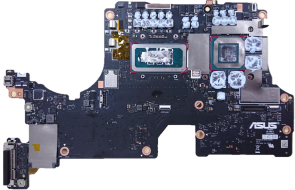
◆ LCD EDP



◆ VOL FPC



◆ MAIN BOARD



◆ SPEAKER



◆ THERMAL MODULE



◆ THERMAL MODULE  
(For GZ301ZA SKU Only)



◆ LED\_FPC



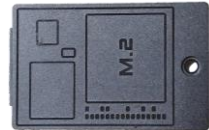
◆ TOUCH PANEL FFC



◆ VOL KEY



◆ SSD DOOR



◆ SPK ACERATE



◆ CPU FAN



◆ VGA FAN



◆ CAMERA HOLDER ASSY



◆ REAR CAM FPC



◆ POWER LED RUBBER



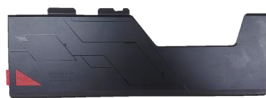
◆ CAMERA HD FIX 3.3V CR



◆ SSD



◆ KICKSTAND ASSY



◆ SSD DOOR ABSORBER



◆ HINGE MYLAR



◆ HINGE MASK MYLAR



◆ USB BOARD FPC



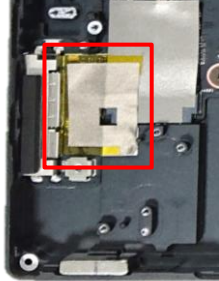
◆ SIDE KEY BRACKET



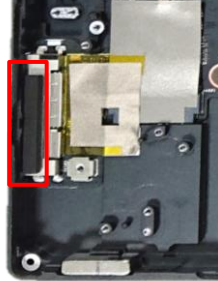
◆ FRONT CAMERA RUBBER



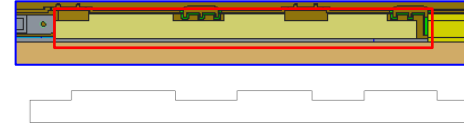
◆ MB SSD GASKET



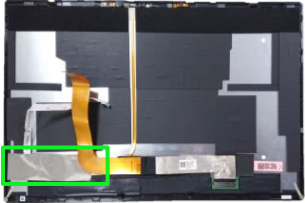
◆ MB GC CONN GASKET



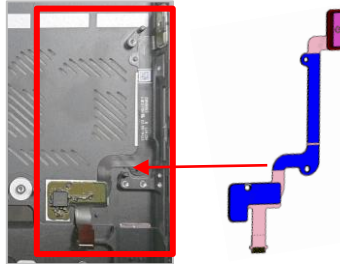
◆ BEZEL SPONGE L



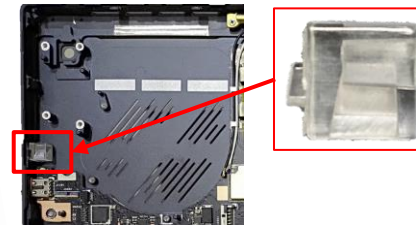
◆ LCD TOUCH IC GASKET



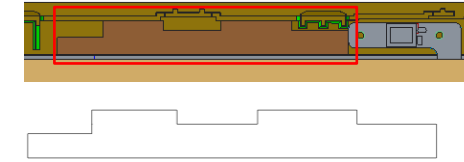
◆ FP POWER BUTTON



◆ INDICATOR LENS



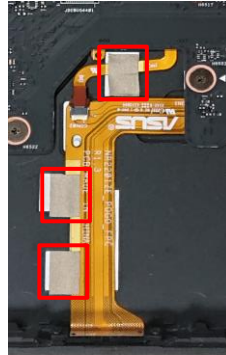
◆ BEZEL SPONGE R



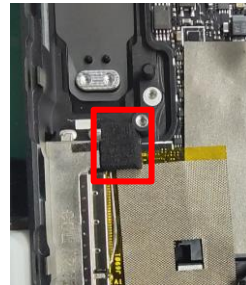
◆ LED FPC GASKET



◆ LED FPC Gasket



◆ HINGE SAFETY SPONGE

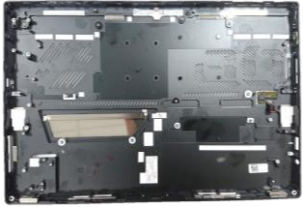


◆ GLASS CONDUCTIVE TAPE





◆ A COVER ASSY



◆ LCD EDP



◆ CAMERA MODULE 8M



◆ LCD MODULE



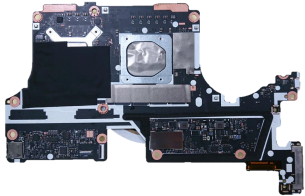
◆ KICKSTAND ASSY



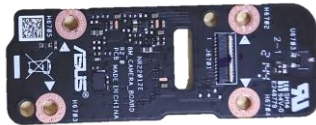
◆ THERMAL MODULE



◆ MAIN BOARD



◆ CAM CONNECTOR\_BD



◆ THERMAL MODULE  
(For GZ301ZA SKU Only)

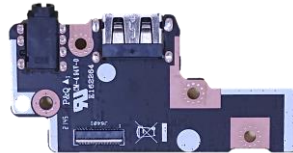


◆ SSD DOOR



(SSD DOOR ABSORBER)

◆ USB BD



This chapter describes disassembly and assembly (Assemble document please look up from the last page), please follow the information provided in this section to perform the complete disassembly procedure.

## ◆ Precautions:

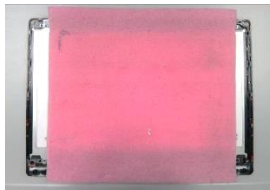
Before you perform any service or repair on the notebook, please pay special attention to the cautions prevent any damages to the notebook.

1. Be sure that the notebook is powered down.
2. Before disassembling any part, please disconnect all power source. ex: AC plug/Battery connector/Power protect screw etc.

3. Remove all rings, watches and any other metal objects from your hands.



4. Always wear a ground strap on your hand to protect the notebook from static discharge.
5. Please refer to “ANSI ESD S20.20” about ESD protection measure.
6. Put the disassembled parts in the functional PE BAG to avoid any damages of the A/B/C/D part.



7. The maintenance environment temperature is 20-30 °C and humidity is 40% - 70%.
8. To avoid scratching on the surface of machine; please use anti-static and soft materials to put on desk in repair environment as below photo.



9. Screw Appearance Criteria:

If the screws have the following damaged appearance, please do not use.

- a. Shape deformed.
- b. Damaged head – unable to drive in or the stripped screw.
- c. Damaged unable to securely tighten.
- d. Paint scratched off.
- e. Rusty



10. The following chapter includes all part numbers mentioned in service guide are used for reference only, actual part name depends on different SKU, if you need the exact part number for ordering, please refer to the Orderbook.
11. Due to sales policy difference, the components may have different specifications on the same model. Please note that all pictures and components shown on Service Guide are for disassembly/assembly description purpose only, so please refer to the actual product for disassemble/assemble.

Please prepare and select the appropriate tools to disassemble/assemble for the ASUS ROG Flow Z13 (GZ301Z) Series notebook.

## ◆ Screwdriver

Please accord to different screw specification to choose different screwdriver and head.



## ◆ Plastic Blade



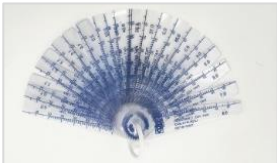
## ◆ Plastic Tweezers

Use a pair of tweezers to remove/insert/tidy cables.



## ◆ Thickness Gauge

Thickness compass specification 0.05mm-1.5mm. Use it to measure the gap.



## ◆ Magnetism Board

Suggest local buy magnetism board to place screw, avoid mix different type screw to cause assembly damage.



## ◆ Alcohol 95%



## ◆ Thermal Pad



## ◆ FCR-AS Thermal Grease



## ◆ LCD Screen Opening



## ◆ Glove



## ◆ PLASTIC CARD T=0.35mm



## ◆ Dust-free Cloth



## ◆ PLASTIC PICK T=0.5mm



Please prepare and select the appropriate tools to disassemble/assemble for the **ASUS ROG Flow Z13 (GZ301Z) Series** notebook.

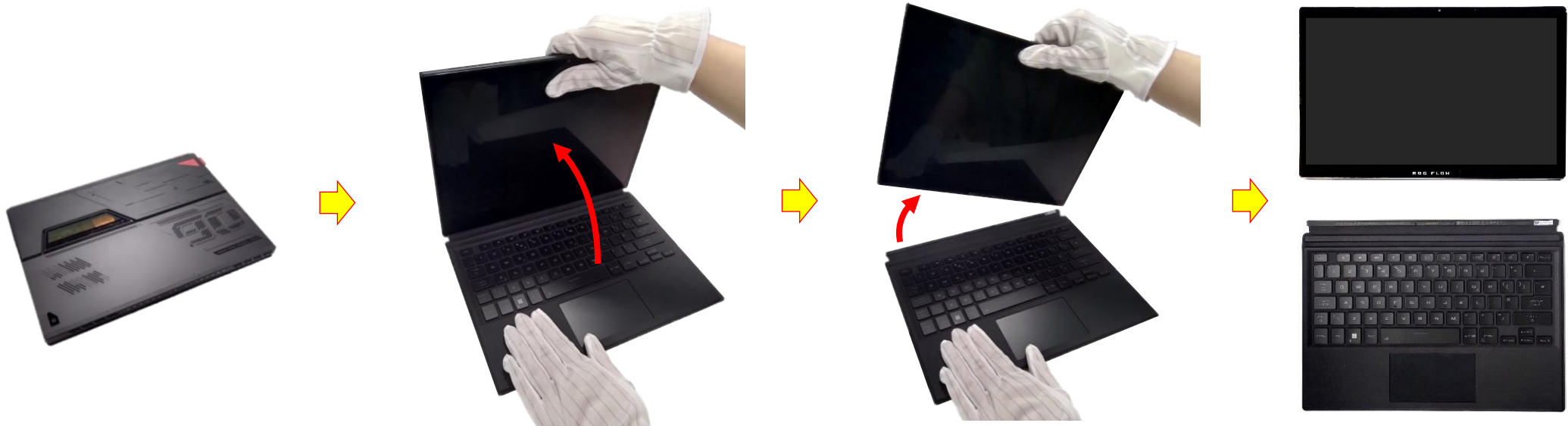


Item	Part Name	Memo
1	Silicone scraping pen	
2	Conductonaut 1g (Liquid Metal)	<ul style="list-style-type: none"><li>▪Please store it in the environment of 10 ~ 40 °C.</li><li>▪Please keep cover tightly closed until ready for next time use.</li><li>▪Shipping category : Dangerous Goods.</li></ul>
3	Intel ADL-P H45 steel plate	
4	Stainless steel plate (60mm*20mm*0.2t)	
5	95% alcohol	
6	Dust-free cloth	
7	Dust-free cotton swab//class 100 (100pcs)	

**Disassembly Notice**

Please be sure to pull out adapter. 

Step 1 : Remove the Keyboard from device.





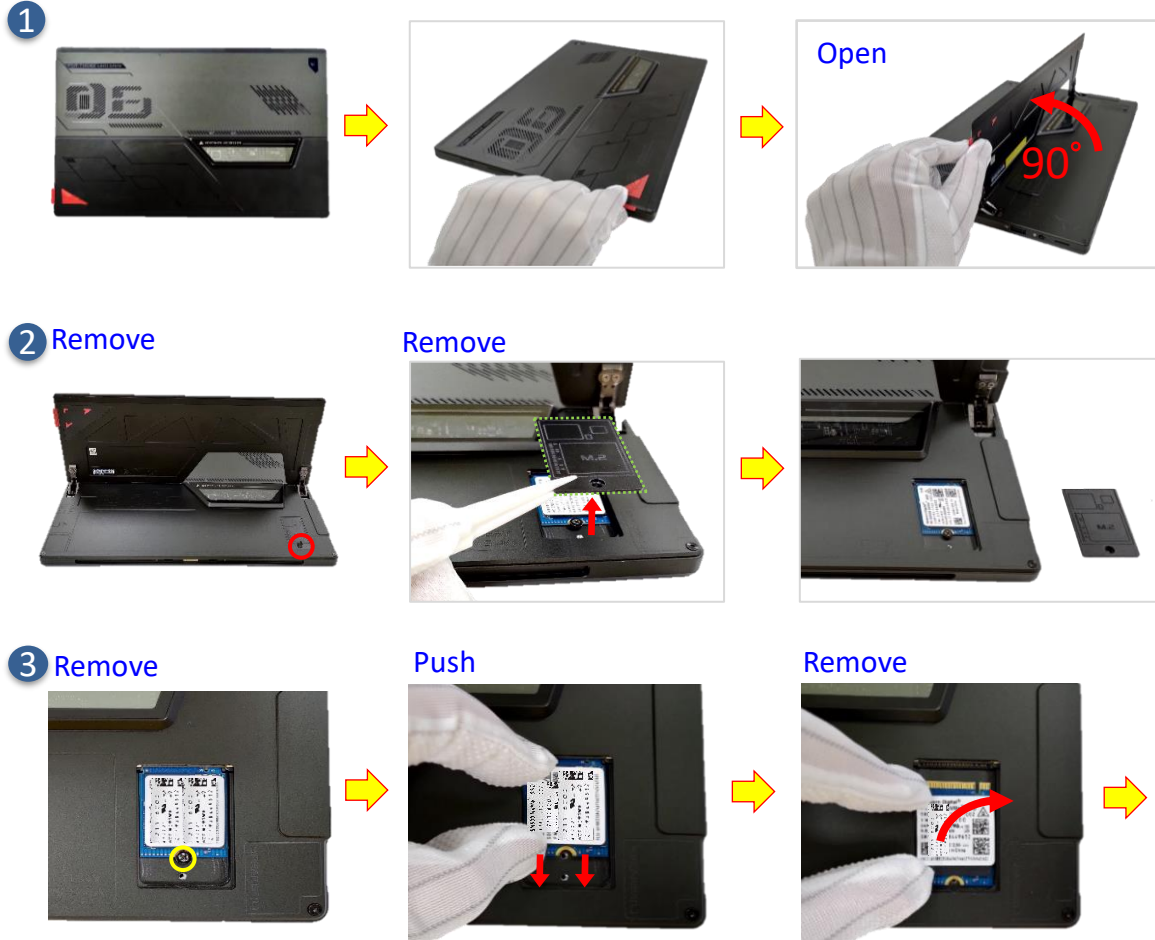
## Disassembly Notice

Please be sure to pull out adapter.

Step 1 : Turn on the KICKSTAND.

Step 2 : Remove screw \*1pc, and SSD DOOR.

Step 3 : Remove screw \*1pc, and SSD.



Screws	QTY	Spec	Torque (kgf-cm)
	1	M2*4.8L (3.1,0.8) (K)+H #1	1.8±0.2
	1	M2*2.5L (5,0.5) (K) #1	1.8±0.2

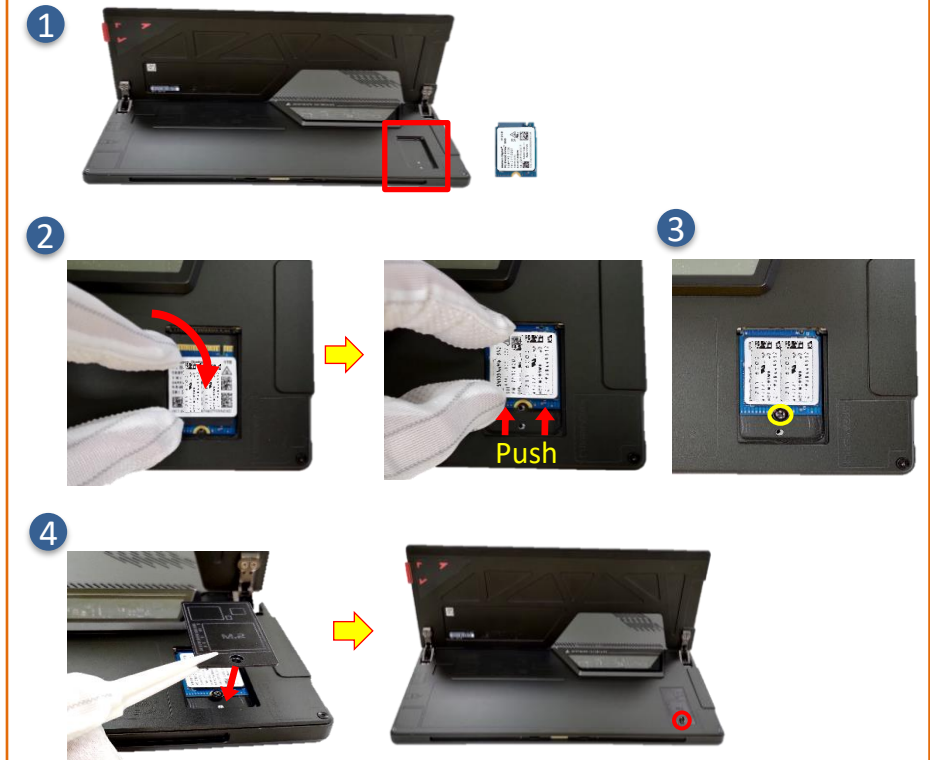
## Assembly Notice

Step 1. Put the SSD into the SSD slot.

Step 2. Push SSD in.

Step 3. Lock the screw \*1pc.

Step 4. Assemble SSD DOOR, and lock the screw \*1pc.



## Disassembly Notice

Please be sure to pull out adapter.

Step 1 : Turn on the KICKSTAND, and remove screws \*4pcs.

Step 2 : Using LCD Screen Opening to position on middle upper of panel.

Step 3 : Clamp LCD Screen Opening to separate the panel from the frame, and creating a gap.

Step 4 : Please follow the arrow direction, the using plastic blade to **pry open** the panel module along the gap.

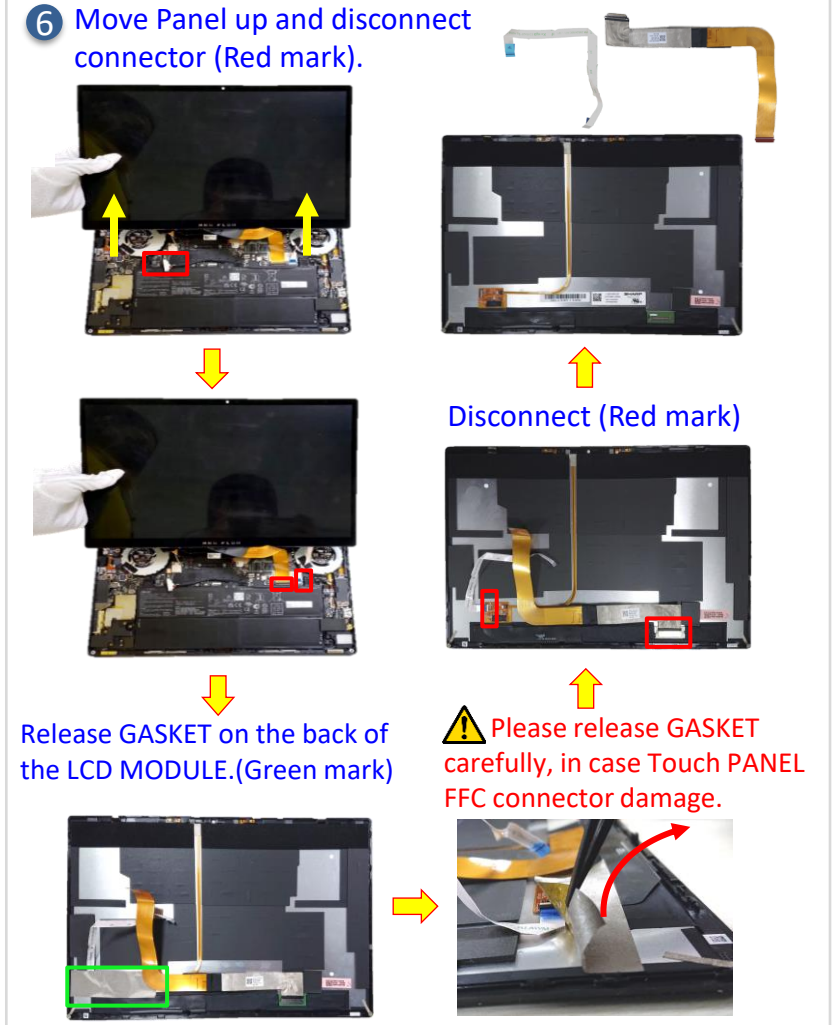
(From Top to left and right both side)

Step 5 : Open the panel in the direction of the arrow.

Step 6 : Move panel up and disconnect Battery connector first, and then cables\*2pcs, then release LCD TOUCH IC GASKET, disconnect TOUCH PANEL FFC and LCD EDP.



Screws	QTY	Spec	Torque (kgf-cm)
	2	M1.6*8L (3.1,0.8) (K)+H T5	1.8±0.2
	2	M1.6*3.5L (3,0.8) (K)+H T5	1.4±0.1

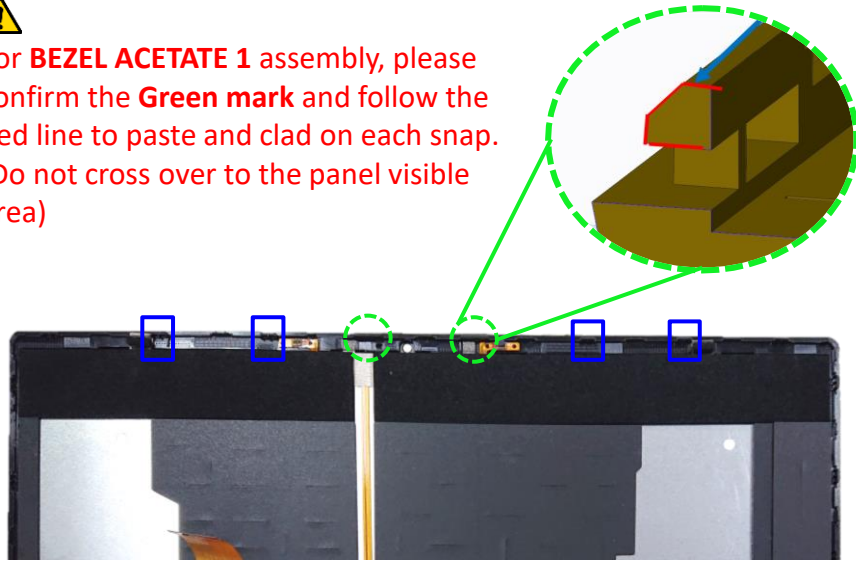


## Assembly Notice

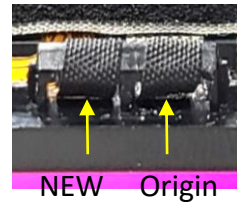
Please be sure to pull out adapter and disconnect the battery.



For **BEZEL ACETATE 1** assembly, please confirm the **Green mark** and follow the Red line to paste and clad on each snap. (Do not cross over to the panel visible area)



Sample pasted

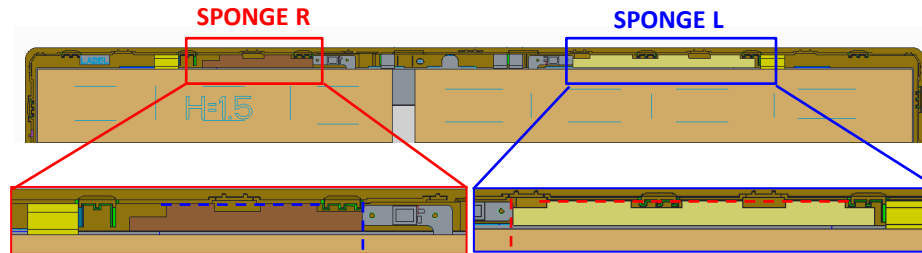


For **BEZEL ACETATE 2** assembly, please confirm the **Blue mark** and follow the Red line to paste and clad on each snap. (Do not cross over to the panel visible area)

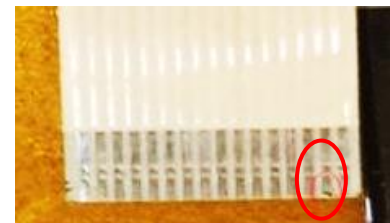
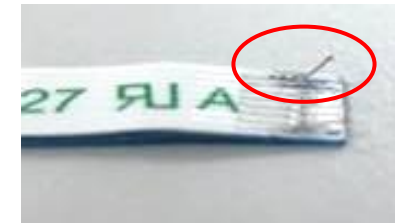
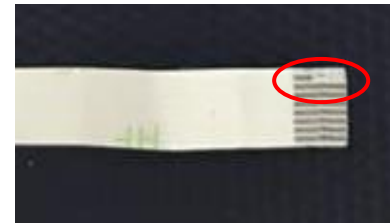
Sample pasted



For **BEZEL SPONGE R** and **BEZEL SPONGE L** assembly, please follow the location and alignment to paste the sponge.



If FFC is damage during disassembly, please replace new one. Here are some samples of FFC damage:





## Disassembly Notice

Please be sure to pull out adapter and disconnect the battery.

**⚠ Before disassembly battery connector, please be sure to pull out adapter and disconnect the battery more than ten seconds in order to IC damage.**

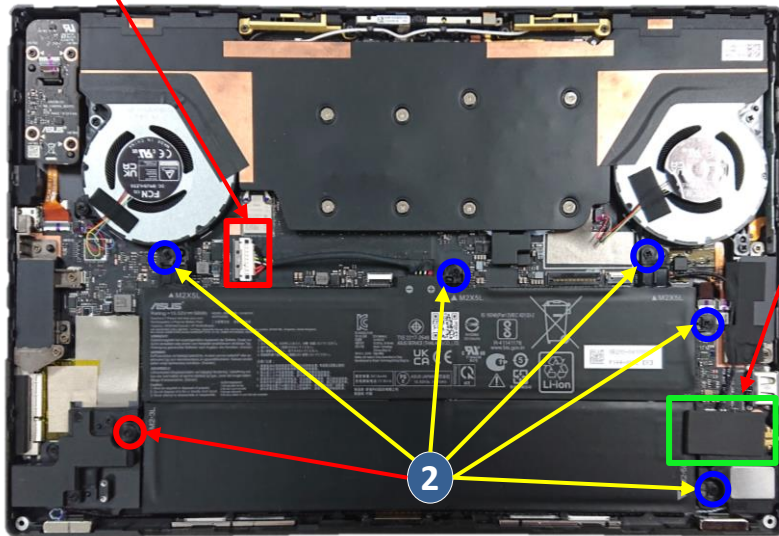
Step 1 : Check and disconnect the battery connector.

Step 2 : Remove screws \*6pcs.

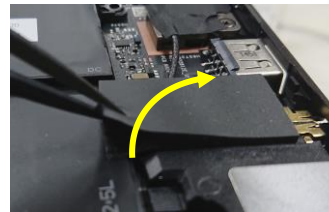
Step 3 : Release Battery sponge.

Step 4 : Remove Battery.

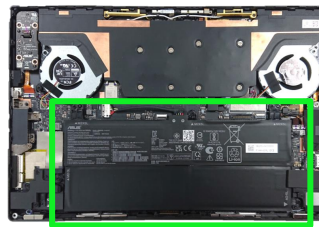
### 1 Disconnect



### 3 Release (Green mark)



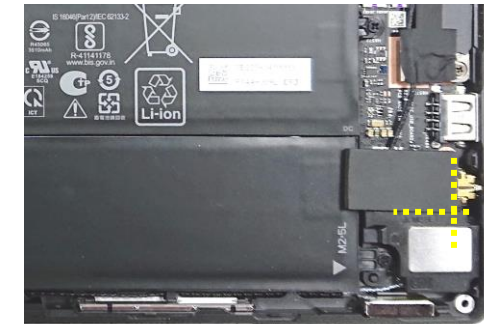
### 4 Remove



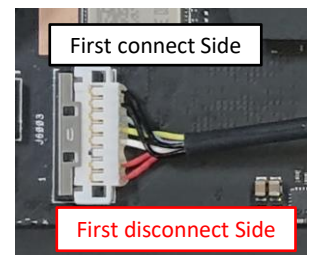
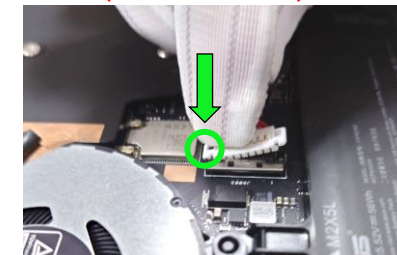
Screws	QTY	Spec	Torque (kgf-cm)
	5	M2*5L (K)B-ZN,NY	1.8±0.2
	1	M2*3L D3.5 (K) B-NI,NY	2.0±0.2

## Assembly Notice

**⚠ When Battery sponge assembly, please follow the mark below to fix.**



**⚠ When Battery cable connected, please start with upper side (Black line side) to connect.**

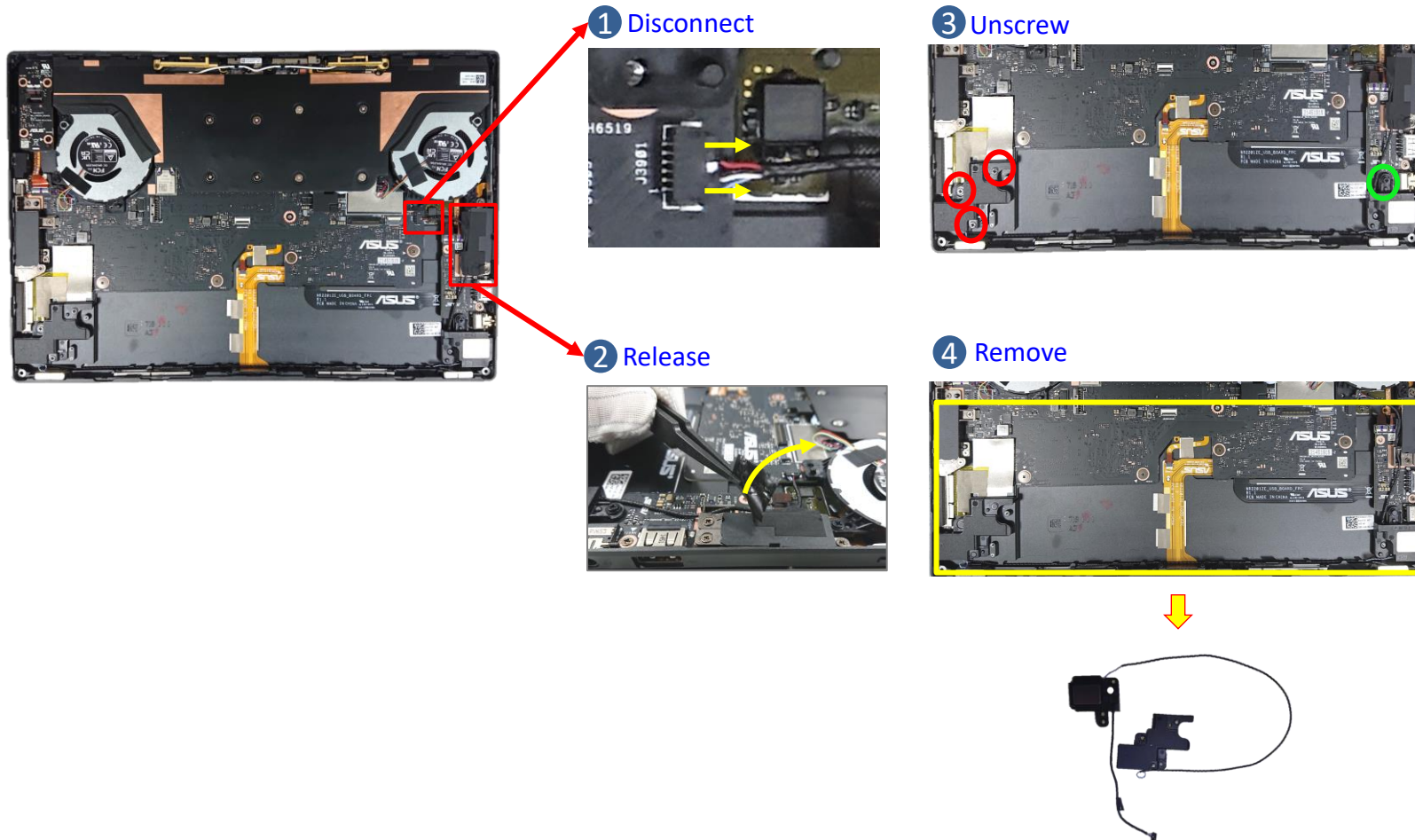


## Disassembly Notice

Please be sure to pull out adapter and disconnect the battery.

- Step 1 : Disconnect SPEAKER connector.
- Step 2 : Release SPK ACERATE.
- Step 3 : Remove screws \*4pcs.
- Step 4 : Remove SPEAKER.

Screws	QTY	Spec	Torque (kgf-cm)
T	3	M2*3L D3.5 (K) B-NI,NY	2.0±0.2
T	1	M2*5L (K)B-ZN,NY	1.8±0.2

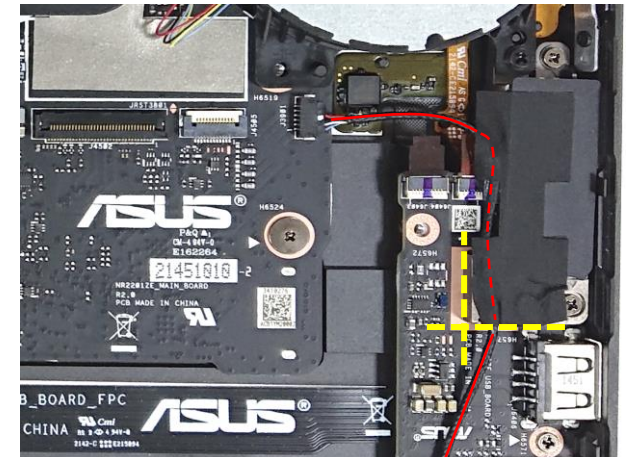


## Assembly Notice

When Speaker assembly, please follow the mark below to tidy up the cable.



When SPK Acerate assembly, please follow Yellow mark below to paste, and Speaker cable must be fixed as Red line under SPK ACERATE.





## Disassembly Notice



Please be sure to pull out adapter and disconnect the battery. 

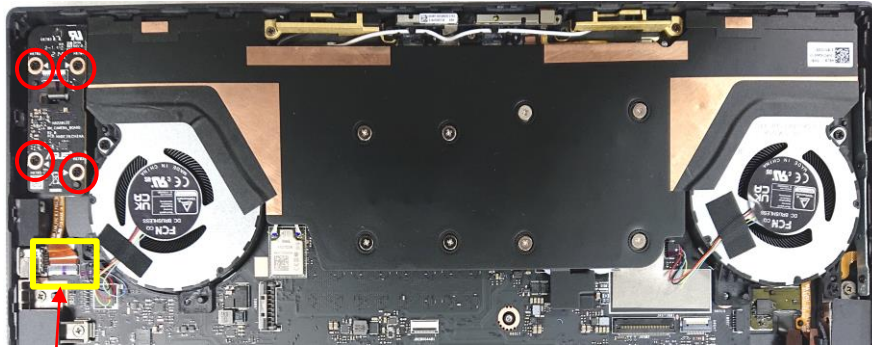
Step 1 : Disconnect FPC cable.

Step 2 : Remove screws \*4pcs, and CAM Connect BD.

Step 3 : Disconnect the Rear CAM Module 8M, then remove it.

Step 4 : Disconnect the Rear CAM FPC, then remove it.

Screws	QTY	Spec	Torque (kgf-cm)
 	4	M2*3L D3.5 (K) B-NI,NY	2.0±0.2

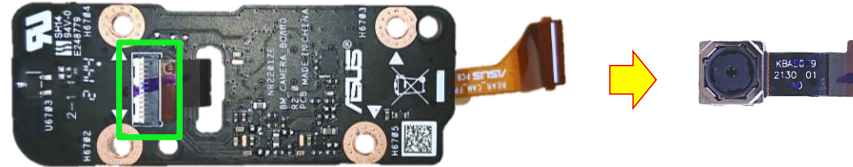


① Disconnect (Yellow mark)

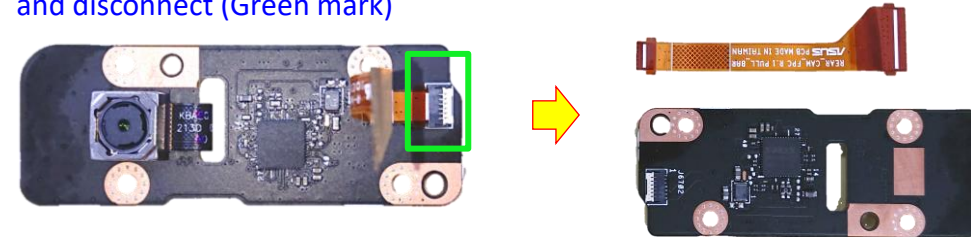
② Unscrew (Red mark) and remove



③ Disconnect (Green mark) & remove



④ Flip the CAM Connect BD over and disconnect (Green mark)



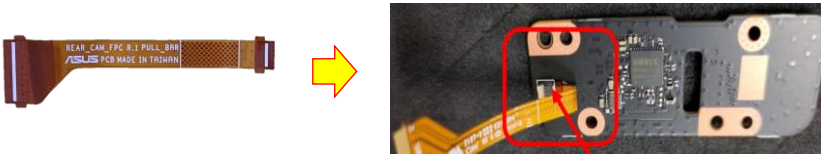
## Assembly Notice

Please be sure to pull out adapter and disconnect the battery.

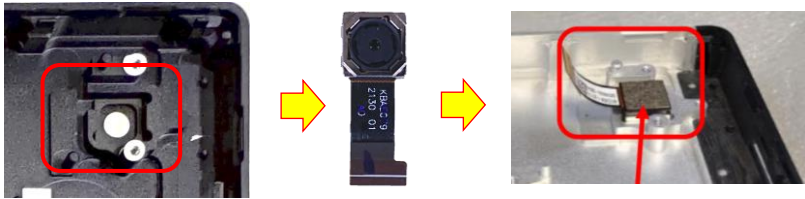


- ⚠ When Camera Connect Board & Camera Module 8M assembly, please follow the step below to assemble.

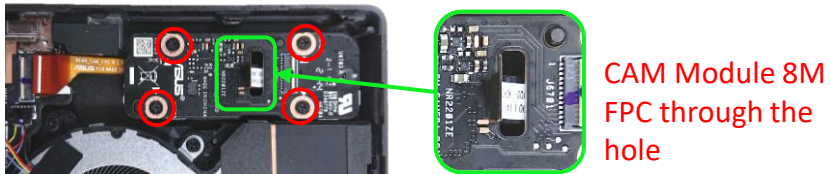
Step-1 Connect Rear CAM FPC to CAM Connect BD.



Step-2 Check the Cover's camera lens is clean, and then assemble Camera Module 8M on cover.



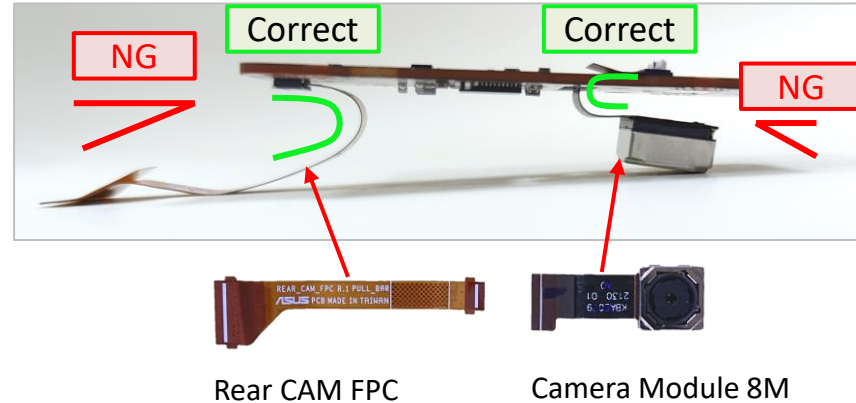
Step-3 Assemble CAM Connect BD on cover (Make sure the Camera Module 8M FPC through the CAM Connect BD), then lock screws \*4pcs.



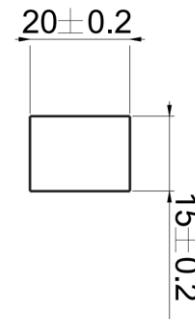
Step-4 Connect CAM Module 8M to CAM Connect BD.



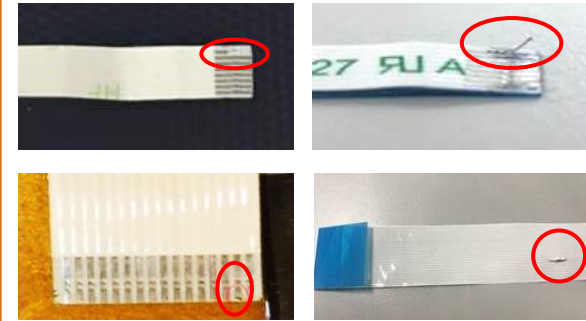
- ⚠ When Rear Camera FPC & Rear Camera Module 8M assembly, please keep the FPC cable with curve, and do not fold the FPC cable with an angle.



- ⚠ When Camera Connect Board & Camera Module 8M assembly, please follow the location below to paste Rear Camera Acerate.

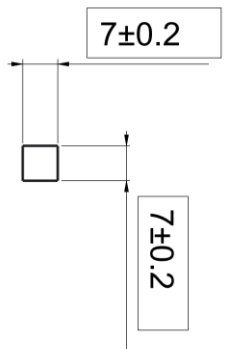
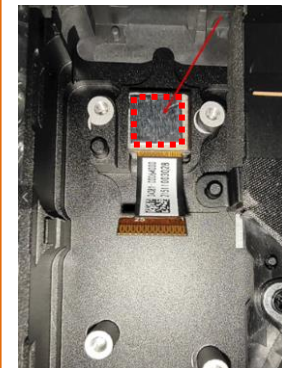


- ⚠ If FFC is damage during disassembly, please replace new one. Here are some samples of FFC damage:



- ⚠ When Camera Module 8M assembly, please follow the location below to paste REAR CAMERA AL FOIL.

**\*Do not paste beyond the module.**





## Disassembly Notice



Please be sure to pull out adapter and disconnect the battery. 

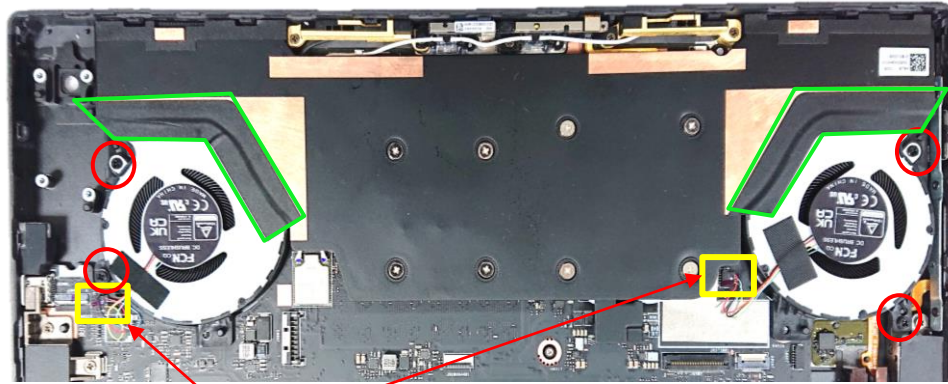
Step 1 : Disconnect Fan connector \*2pcs.

Step 2 : Remove screws \*4pcs.

Step 3 : Tear off Mylar \*2pcs.

Step 4 : Remove Fan \*2pcs.

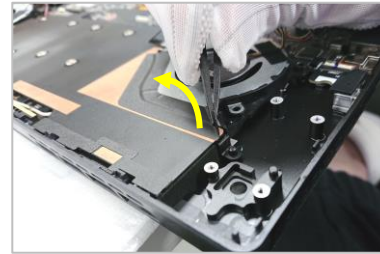
Screws	QTY	Spec	Torque (kgf-cm)
 	4	M2*5L (K)B-ZN,NY	1.8±0.2



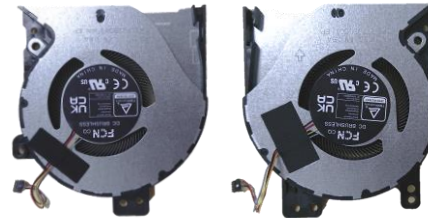
① Disconnect (Yellow mark)

② Unscrew (Red circle)

③ Tear off (Green mark)




④ Remove



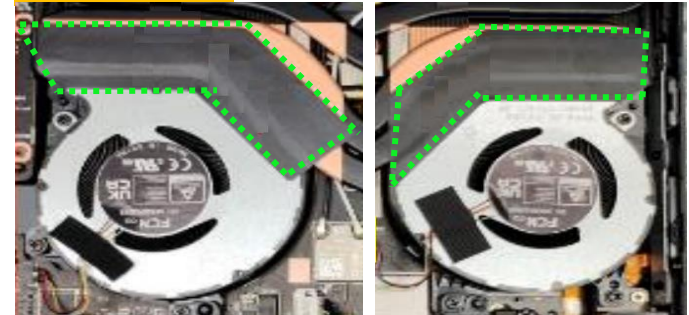
(CPU FAN)

(VGA FAN)

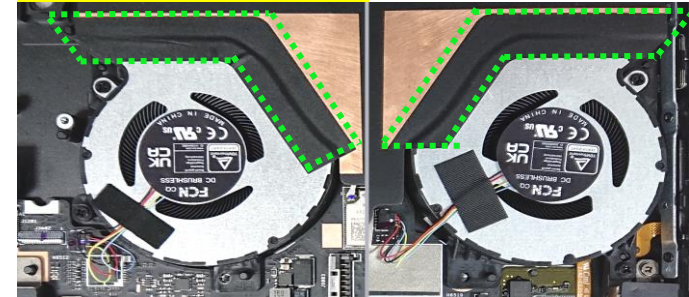
## Assembly Notice

 After the FAN assembled, please follow the mark below to paste new CPU/GPU mylar or gasket.

For GZ301ZA



For GZ301ZE/GZ301ZC



## Disassembly Notice


Please be sure to pull out adapter and disconnect the battery. 

Step 1 : Tear off HINGE MYLAR \*2pcs.

Step 2 : Remove screws \*11pcs, and then remove HINGE MASK MYLAR \*2pcs and HINGE \*2pcs.

Step 3 : Disconnect FPC cable \*2pcs and remove screw \*1pc.

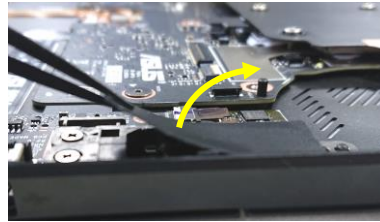
Step 4 : Turn the USB board over from left to right, and then disconnect FPC cable \*1pc, then remove USB BOARD.

Screws	QTY	Spec	Torque (kgf-cm)
 	12	M2*3L D3.5 (K) B-NI,NY	2.0±0.2

1



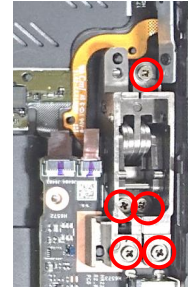
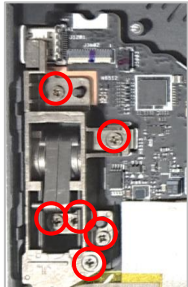
Tear off



2



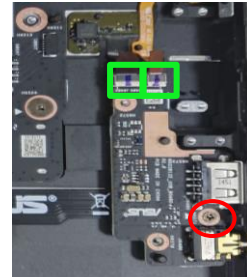
Unscrew



3



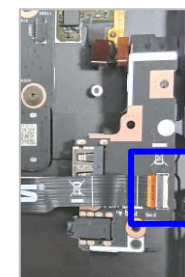
Disconnect & unscrew



4 Turn over



Disconnect

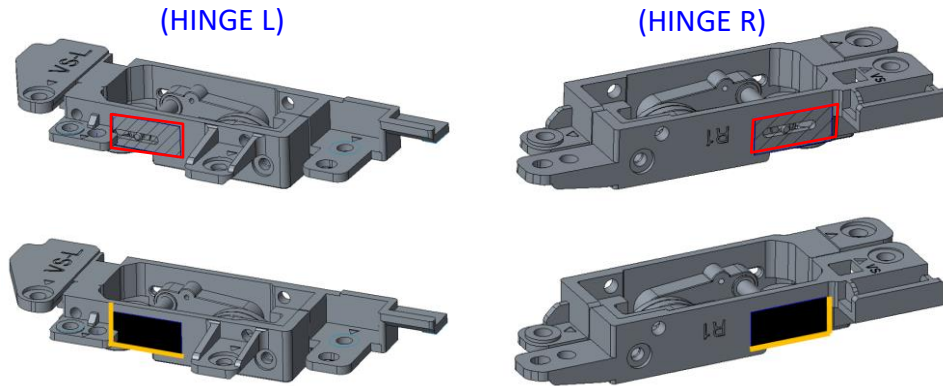


## Assembly Notice

Please be sure to pull out adapter and disconnect the battery.



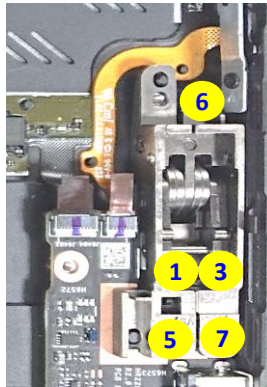
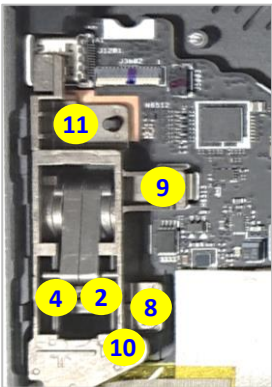
- ⚠ When HINGE assembly, please follow the location below to paste HINGE SAFETY MYLAR.



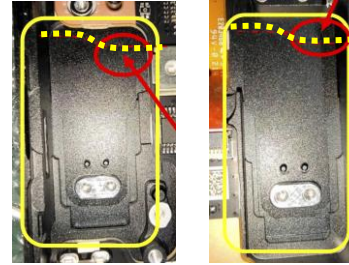
- ⚠ When HINGE assembly, please follow the screws numbers to lock Hinge screws \*11pcs.

(Left)

(Right)



- ⚠ When HINGE MASK MYLAR assembly, please follow direction below to position the Mylar.  
(The Mylar notch are both to the right)





## Disassembly Notice

Please be sure to pull out adapter and disconnect the battery.

Screws	QTY	Spec	Torque (kgf-cm)
	8	Retention Screw	1.8±0.2
	3	M1.6*4L (3.2,0.6) (K) #0	1.4±0.1
	8	M2*3L D3.5 (K) B-NI,NY	1.8±0.2

Step 1 : Please follow the reverse screw numbers to release screws \*8pcs.

Step 2 : Remove the THERMAL MODULE from MB.

Step 3 : Disconnect FPC \*1 pc, and remove screws \*3pcs, then remove CAMERA Module.

Step 4 : Disconnect FRONT CAM FPC and remove CAMERA HD FIX 3.3V from CAMERA HOLDER.

Step 5 : Remove POWER LED RUBBER \*1pc.

Recommend that the force point is at Green block, and pull up thermal module to take it out. Do not pull up at Red block and also notice the thermal module should not have deformation.

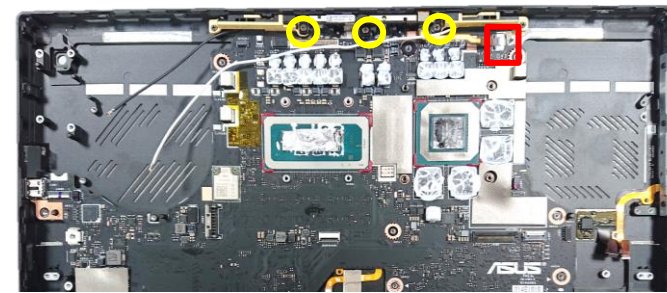
### 1 Release



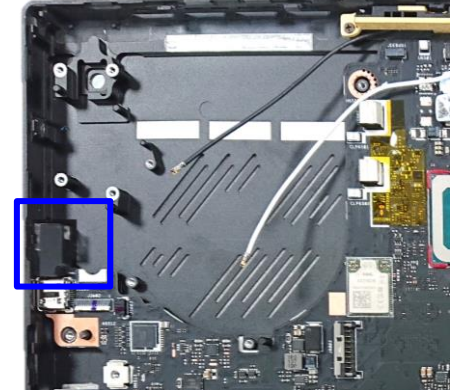
### 2 Remove



### 3 Disconnect (Red mark) & remove (Yellow circle)

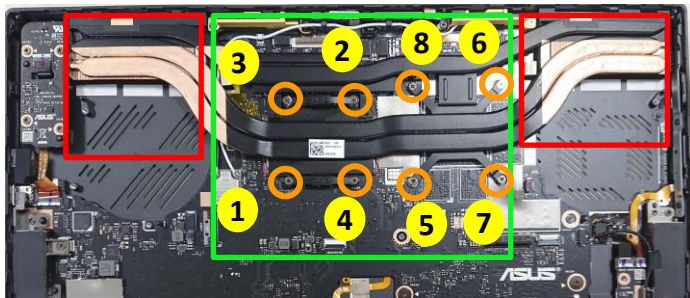


### 5 Remove (Blue mark)



## For GZ301ZA SKU only

### 1 Release



### 2 Remove



### 4 Disconnect and remove



CAMERA HOLDER



CAMERA HD FIX 3.3V



FRONT CAM FPC



POWER LED RUBBER



## Assembly Notice

Please be sure to pull out adapter and disconnect the battery.

**Step-1**

- THERMAL MODULE Location:[VRAM/CHOKE/MOS]  
Material: FCR-AS Grease
- MB Location:[GPU]  
Material: Main (GA500 Grease)

**Step-2**

Please refer **Repair Notice SOP** for **Liquid metal** rework when reassemble thermal module before.

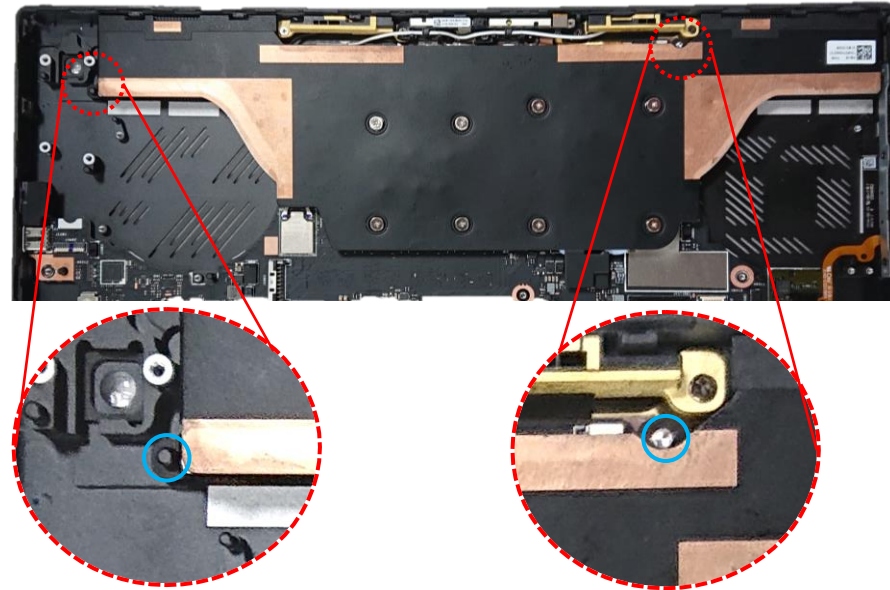
- MB Location:[CPU]

**Step-3**

Please follow the screws numbers to lock Thermal Module screws  
\*8pcs.



When thermal module assembly, please align it according to the positioning column below, and then **put down vertically to assemble the thermal module.**



**IMPORTANT!** Thermal paste, thermal pads, liquid metal, or other thermal interface materials must be thoroughly removed and replaced if this component is removed. Ensure that replacement materials are available before proceeding, or contact an authorized service center for assistance.

**WARNING!** The heat sink contains liquid metal and should only be removed by authorized service personnel. Significant damage may occur to motherboard components if the heat sink is improperly removed.

## Disassembly Notice

Please be sure to pull out adapter and disconnect the battery.

Step 1 : Release MB SSD Gasket \*1pc, and LED FPC Gasket \*2pcs.

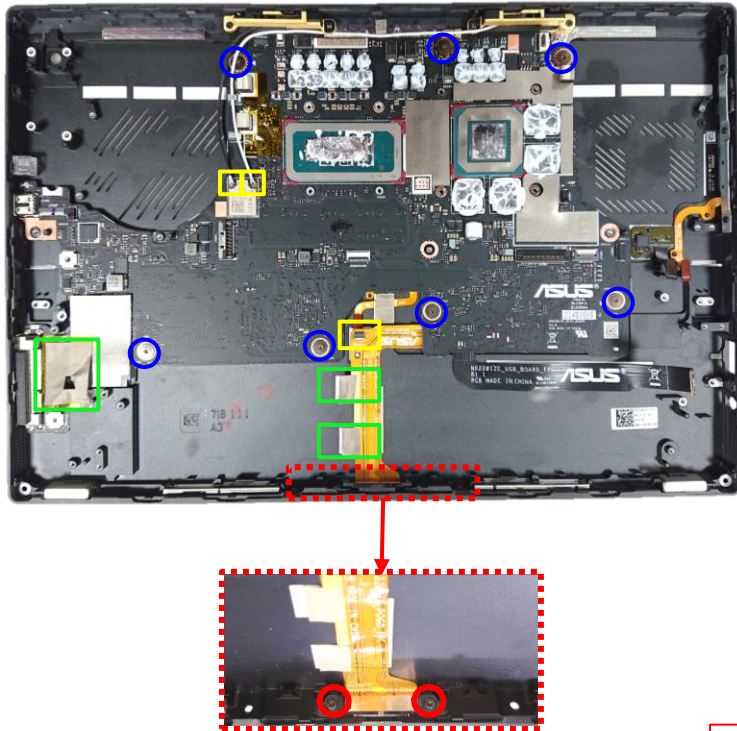
Step 2 : Disconnect cable \*3pcs, and remove screws \* 9pcs

Step 3 : Remove the Main Board.

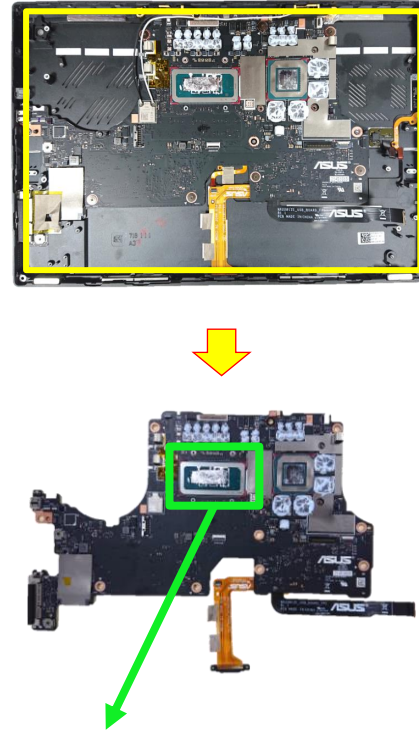
Step 4 : Turn Main Board over, and then release EC BRK KAPTON, disconnect FPC \*2pcs.

① Release (Green mark)

② Disconnect (Yellow mark) & Remove (Blue & Red mark)

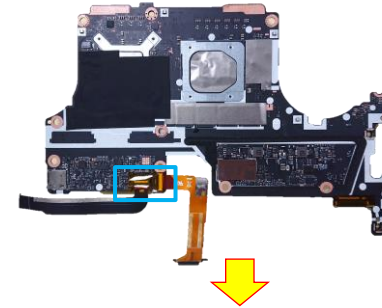


③ Remove

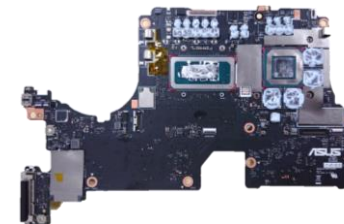
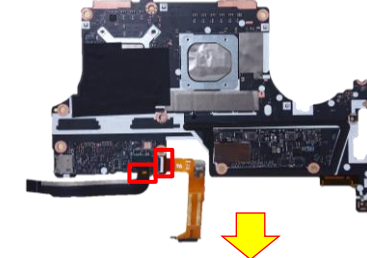


Please refer Repair Notice SOP for Liquid metal rework.

④ Release (Blue mark)



Disconnect (Red mark)



POGO FPC



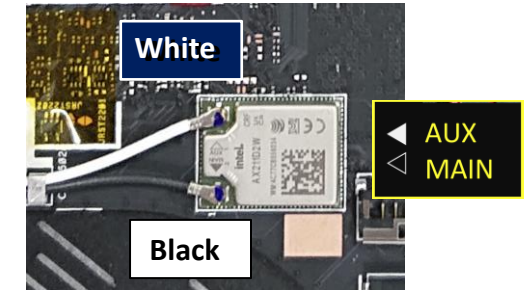
USB BOARD FPC



Screws	QTY	Spec	Torque (kgf-cm)
	7	M2*2L (6.6,0.55) (K) #1	1.8±0.2
	2	M1.6*2.5L(2.85,0.65) (K)	1.4±0.1

## Assembly Notice

Please according to below image to assemble WIFI MAIN and AUX Antenna.

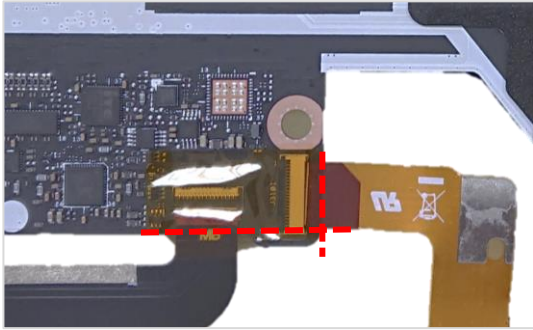




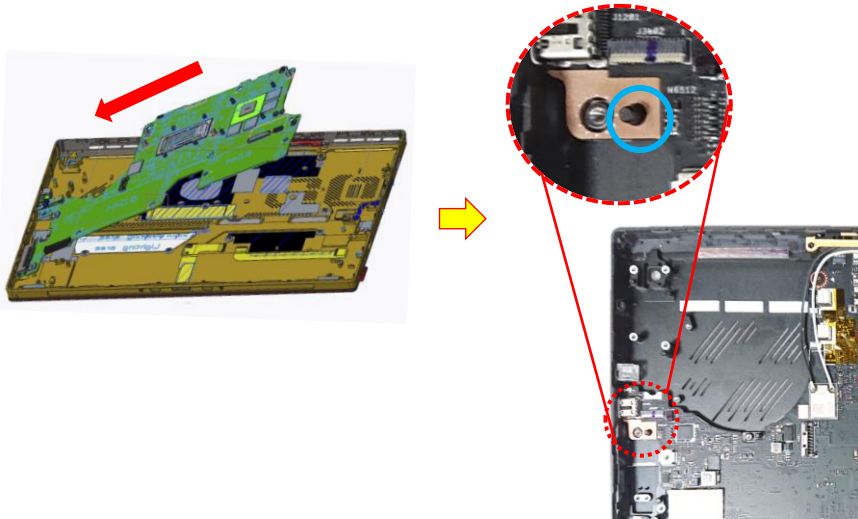
## Assembly Notice

Please be sure to pull out adapter and disconnect the battery.

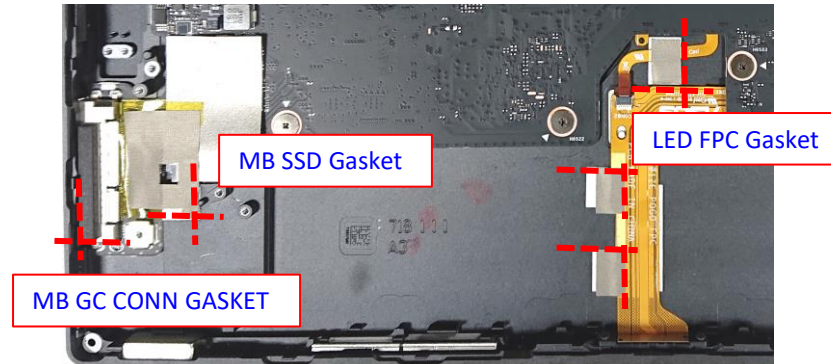
- ⚠** After POGO FPC and USB BOARD FPC assembled, please follow the location below to fix EC BRK KAPTON.



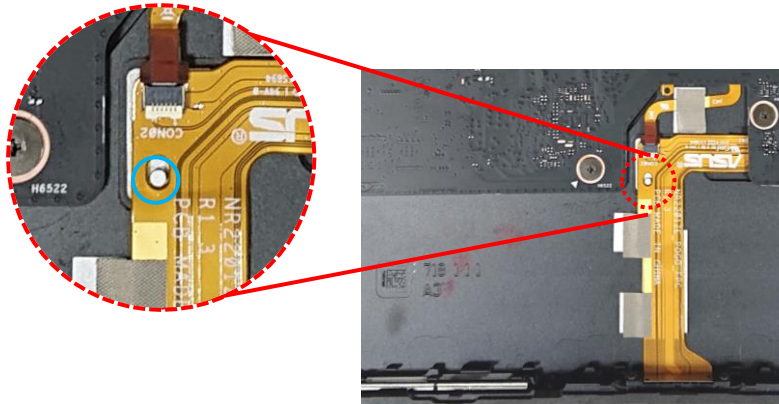
- ⚠** When Main Board assembly, please insert it from the left side and follow the positioning column to fix.



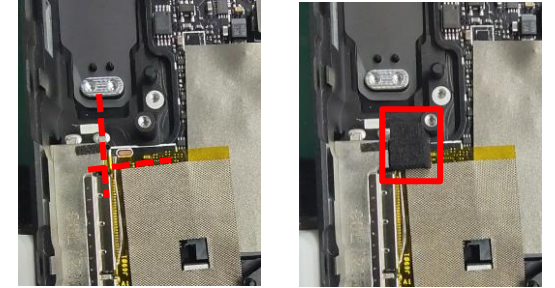
- ⚠** When Main Board assembly, please follow the mark below to fix MB GC CONN GASKET、MB SSD Gasket and LED FPC Gasket \*3pcs.



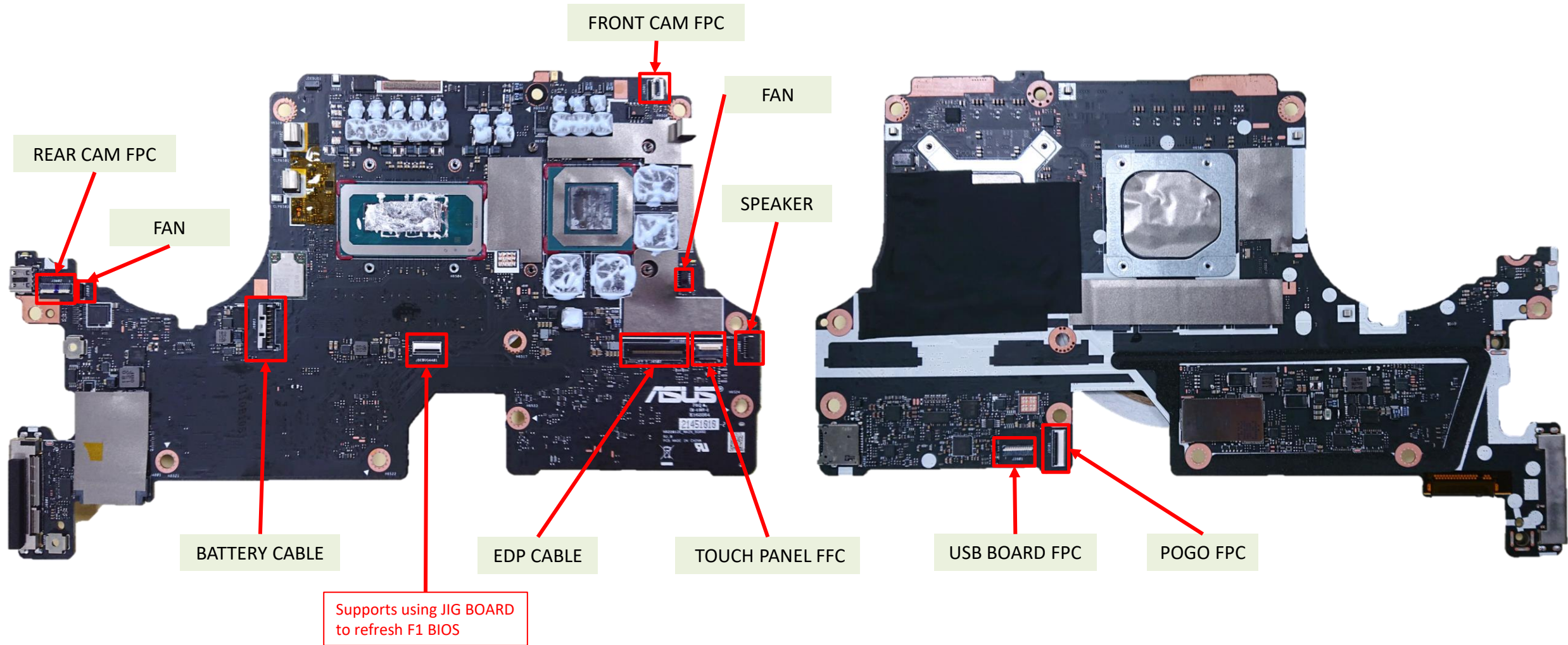
- ⚠** When Main Board assembly, please follow below location (Positioning column) to fix POGO FPC.



- ⚠** When Main Board assembly, please follow the mark below to fix HINGE SAFETY SPONGE.

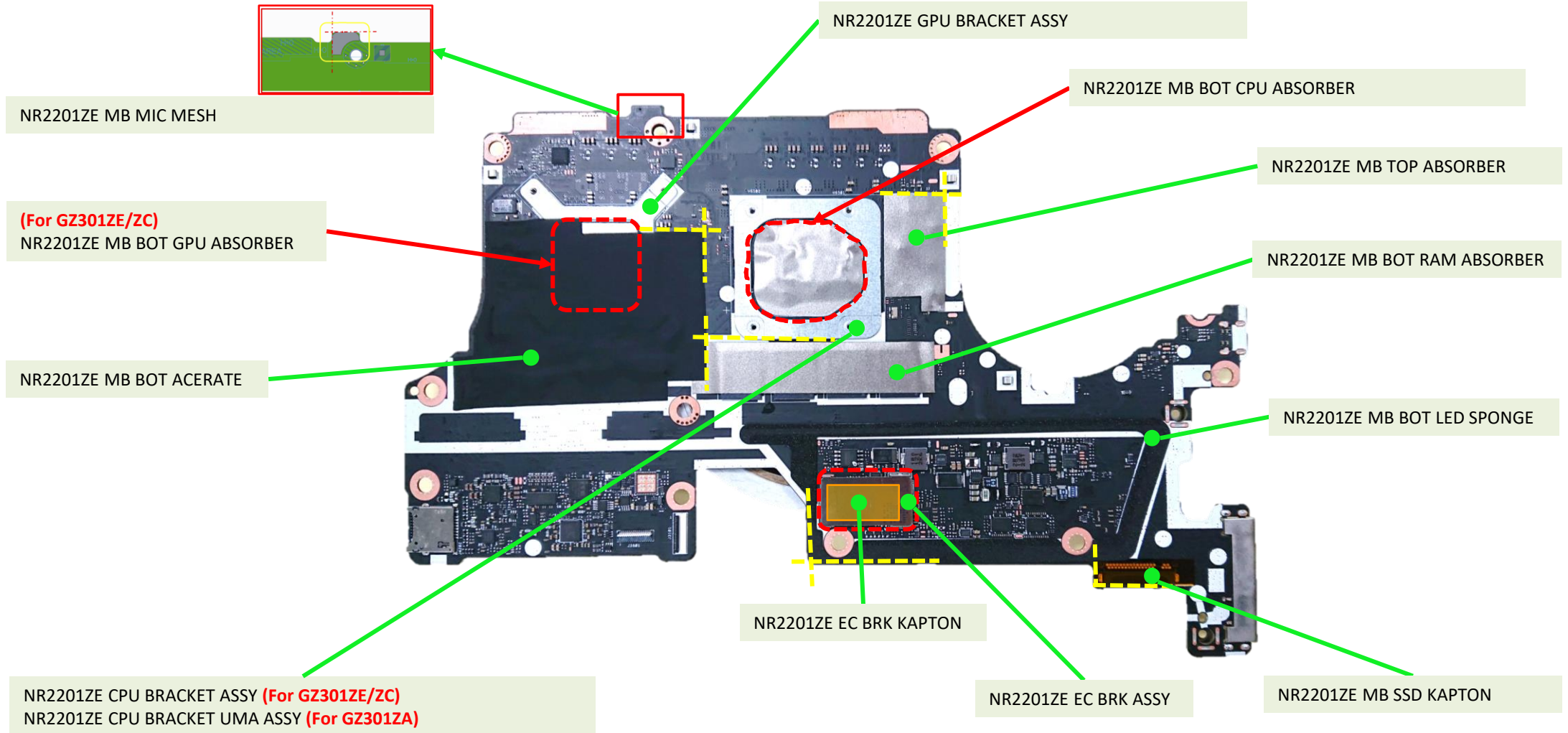


## Mainboard connector placement

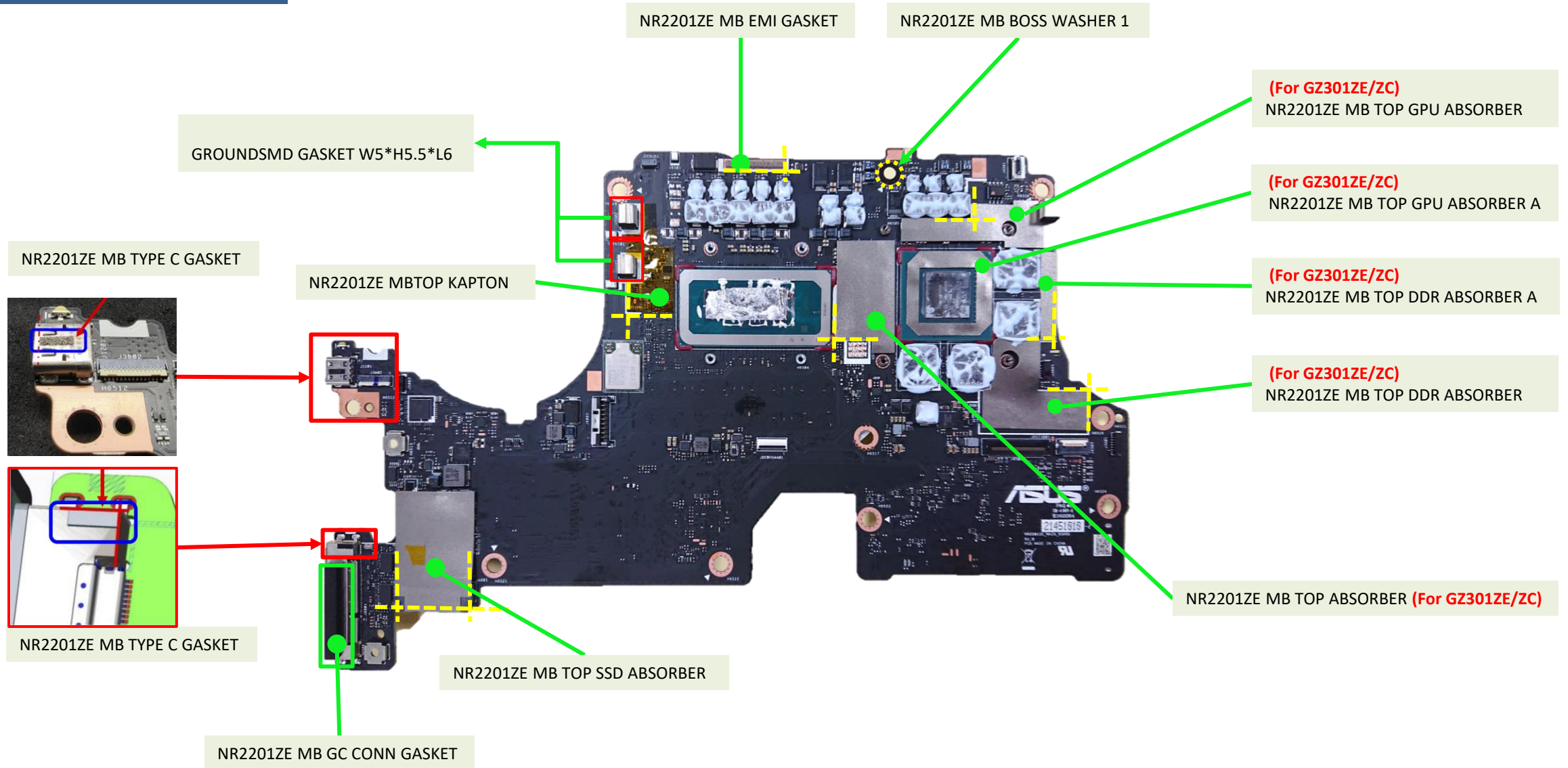




## Materials on mainboard



## Materials on mainboard



**Disassembly Notice**





Please be sure to pull out adapter and disconnect the battery. 

Step 1 : Remove screws \*2pcs.

Step 2 : Remove WIFI Main and Aux Antenna.

Step 3 : Remove screws \*3pcs.

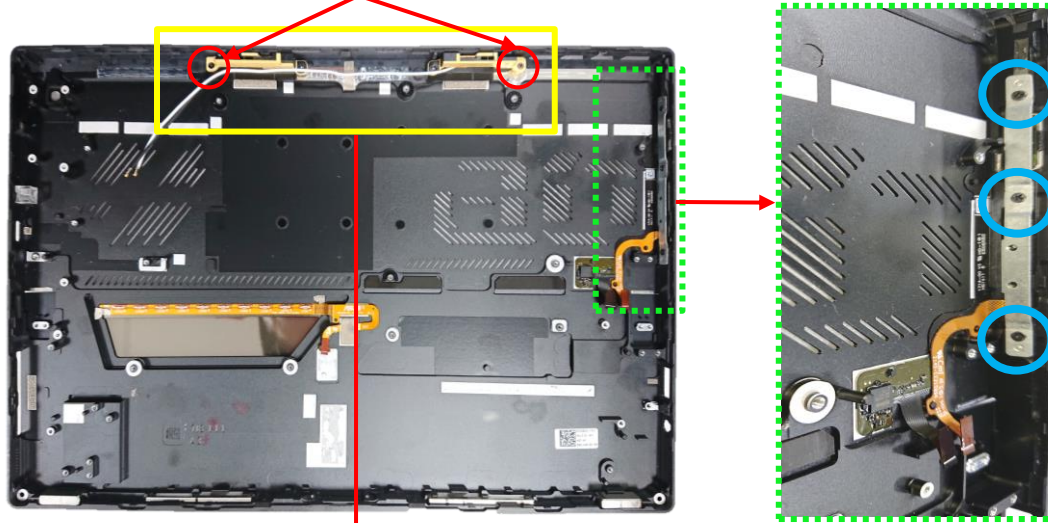
Step 4 : Remove VOL Key 、 Side Key Bracket and VOL FPC.

Screws	QTY	Spec	Torque (kgf-cm)
 	2	M1.6*4L (3.2,0.6) (K) #0	1.4±0.1
 	3	M1.6*2.5L(2.85,0.65) (K)	1.4±0.1

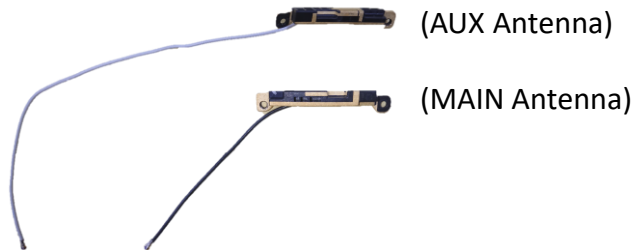
① Remove (Red circle)

③ Remove (Blue circle)

④ Remove VOL Key 、 Side Key Bracket and VOL FPC.

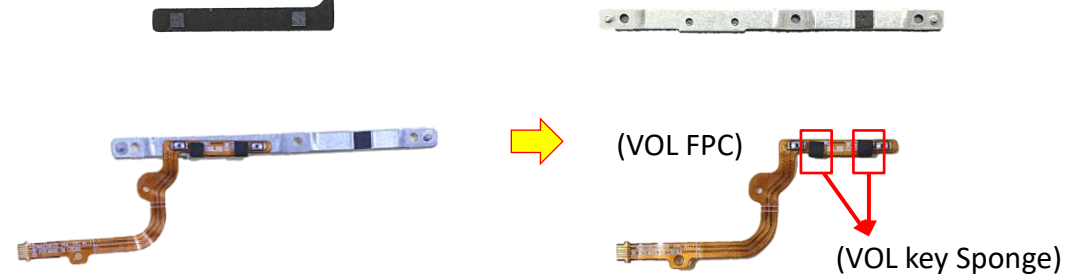


② Remove Antenna



(VOL KEY)

(Side Key Bracket)

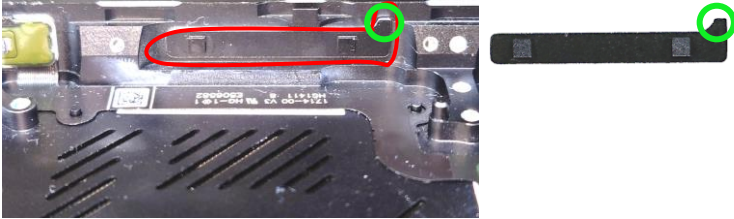




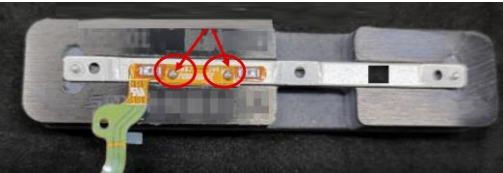
## Assembly Notice

Please be sure to pull out adapter and disconnect the battery. 

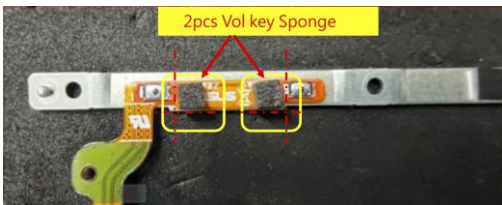
- ⚠ When VOL KEY assembly, please follow the direction (Green circle up) to assemble.



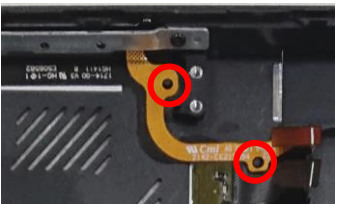
- ⚠ When VOL FPC assembly on Side Key Bracket, please follow the location (Positioning column) below to fix.



- ⚠ When VOL Key Sponge assembly, please follow the location below to fix.

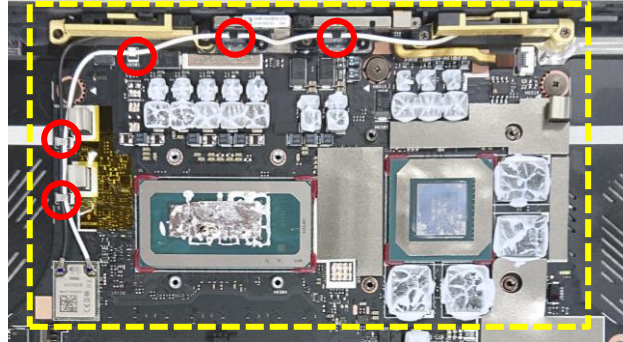


- ⚠ When VOL FPC assembly, please follow the location (Positioning column) below to fix.

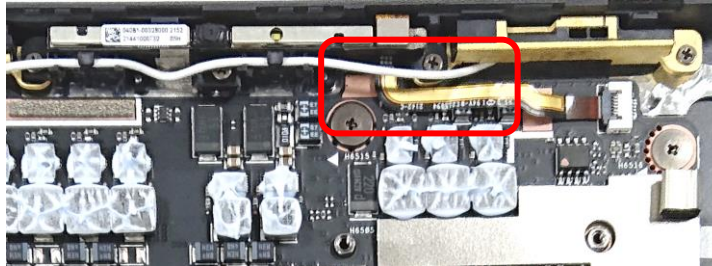


\*After screw lock on Side Key, please check the key feeling.

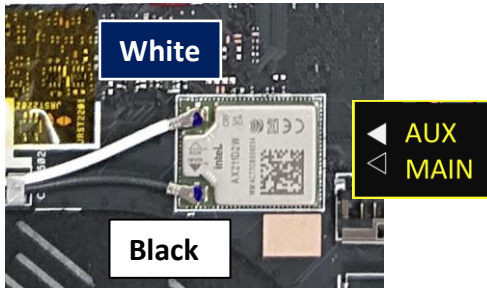
- ⚠ When WIFI Main and Aux Antenna& CAMERA HD FIX 3.3V CR assembly, please follow below location to tidy cables.



- ⚠ When WIFI AUX Antenna assembly, please make sure FRONT CAM FPC should be fixed under Antenna cable.



- ⚠ Please according to below image to assemble WIFI MAIN and AUX Antenna.





## Disassembly Notice

Please be sure to pull out adapter and disconnect the battery.

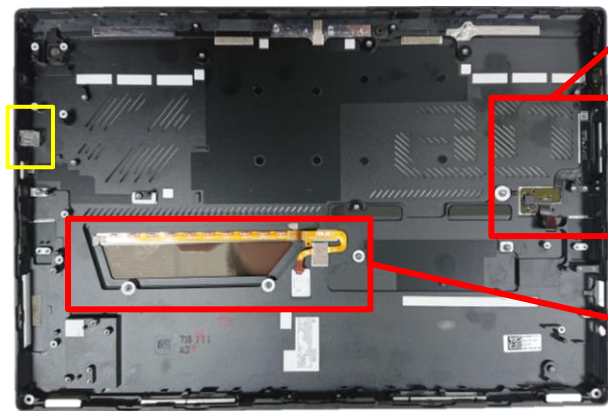
Step 1 : Remove INDICATOR LENS.

Step 2 : Remove FP POWER BUTTON.

Step 3 : Release LED FPC Gasket and remove LED FPC.

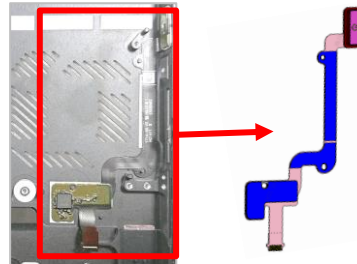
Step 4 : Remove KICKSTAND ASSY from Cover.

① Remove (Yellow mark)



(INDICATOR LENS)

② Remove (FP POWER BUTTON)

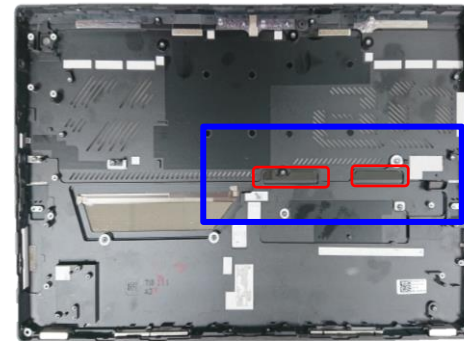


③ Release (LED FPC Gasket)



(LED FPC)

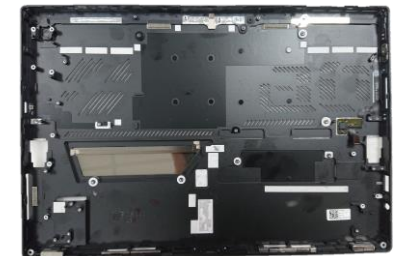
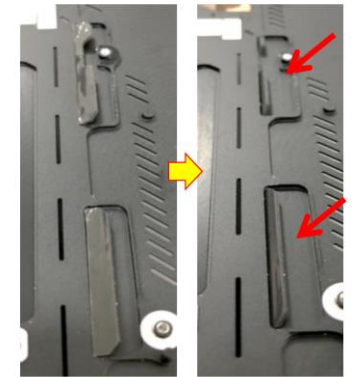
④ Push the MYLAR SPONGE



Open and remove KICKSTAND ASSY




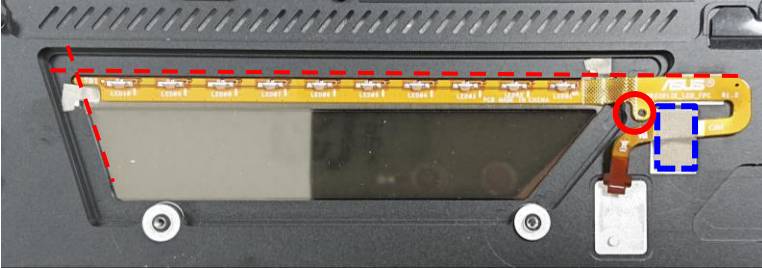
Mylar should down through the hole.




## Assembly Notice


Please be sure to pull out adapter and disconnect the battery. 

-  When LED FPC & LED FPC Gasket assembly, please follow below location to fix. **(Do not paste the LED FPC on the glass perspective zone)**



-  When FP POWER BUTTON assembly, please follow the location (Positioning column) below to fix.



-  Once inside of deco glass is with dust and dirt, please clean it with alcohol and Dust-free Cloth.

