



**ASUS**

# Padfone<sup>™</sup> 2 Station

**Quick Start Guide**





E7676  
First Edition

Copyright © 2012 ASUSTeK COMPUTER INC.

All Rights Reserved.

No part of this manual, including the products and software described in it, may be reproduced, transmitted, transcribed, stored in a retrieval system, or translated into any language in any form or by any means, except documentation kept by the purchaser for backup purposes, without the express written permission of ASUSTeK COMPUTER INC. ("ASUS").

Product warranty or service will not be extended if: (1) the product is repaired, modified or altered, unless such repair, modification or alteration is authorized in writing by ASUS; or (2) the serial number of the product is defaced or missing.

ASUS PROVIDES THIS MANUAL "AS IS" WITHOUT WARRANTY OF ANY KIND, EITHER EXPRESS OR IMPLIED, INCLUDING BUT NOT LIMITED TO THE IMPLIED WARRANTIES OR CONDITIONS OF MERCHANTABILITY OR FITNESS FOR A PARTICULAR PURPOSE. IN NO EVENT SHALL ASUS, ITS DIRECTORS, OFFICERS, EMPLOYEES OR AGENTS BE LIABLE FOR ANY INDIRECT, SPECIAL, INCIDENTAL, OR CONSEQUENTIAL DAMAGES (INCLUDING DAMAGES FOR LOSS OF PROFITS, LOSS OF BUSINESS, LOSS OF USE OR DATA, INTERRUPTION OF BUSINESS AND THE LIKE), EVEN IF ASUS HAS BEEN ADVISED OF THE POSSIBILITY OF SUCH DAMAGES ARISING FROM ANY DEFECT OR ERROR IN THIS MANUAL OR PRODUCT.

SPECIFICATIONS AND INFORMATION CONTAINED IN THIS MANUAL ARE FURNISHED FOR INFORMATIONAL USE ONLY, AND ARE SUBJECT TO CHANGE AT ANY TIME WITHOUT NOTICE, AND SHOULD NOT BE CONSTRUED AS A COMMITMENT BY ASUS. ASUS ASSUMES NO RESPONSIBILITY OR LIABILITY FOR ANY ERRORS OR INACCURACIES THAT MAY APPEAR IN THIS MANUAL, INCLUDING THE PRODUCTS AND SOFTWARE DESCRIBED IN IT.

Products and corporate names appearing in this manual may or may not be registered trademarks or copyrights of their respective companies, and are used only for identification or explanation and to the owners' benefit, without intent to infringe.





Thank you for purchasing another cool ASUS product!

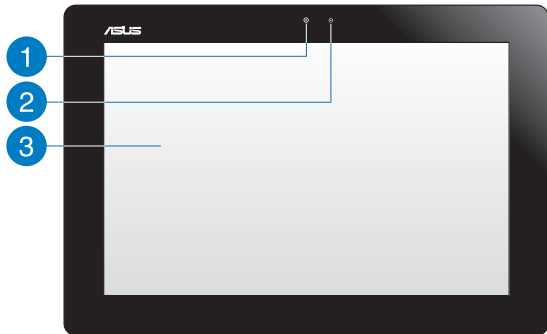
Before you start, ensure that you have read all the safety information and operating instructions in the **Important Notices** bundled with your PadFone 2 to prevent injury or damage to your device.

**NOTE:** This bundled Quick Start Guide is for reference only and is subject to change without prior notice. For the latest updates and more detailed information, please visit [www.asus.com](http://www.asus.com).

## Getting to know your PadFone 2 Station

### Overview

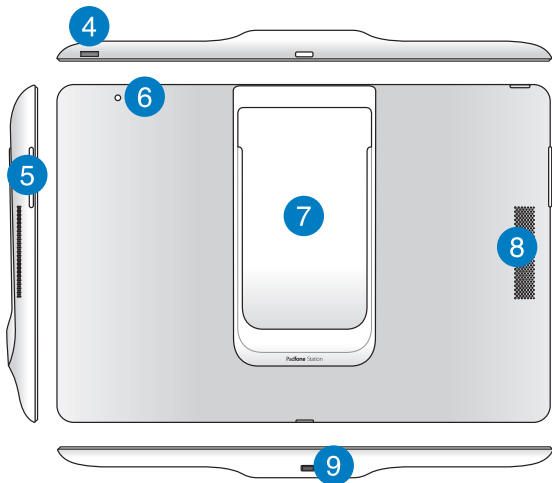
- 1 Camera lens
- 2 Light sensor
- 3 Touchscreen display





## Overview

- 4** Power key
- 5** Volume key
- 6** Microphone
- 7** PadFone 2 bay
- 8** Speaker
- 9** PadFone 2 port



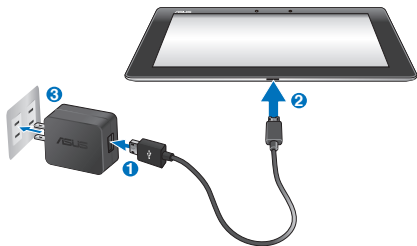


## Charging your PadFone 2 Station

We strongly recommend that you charge your PadFone 2 Station fully before you use it with your PadFone 2.

To charge your PadFone 2 Station:

1. Connect the USB connector into the power adapter's USB port.
2. Connect the PadFone 2 connector into your PadFone 2 Station.
3. Plug the power adapter into a wall socket.



### NOTICE:

- Use only the power adapter that comes with your device. Using a different power adapter may damage your device.
- Using the bundled power adapter and PadFone 2 signal cable to connect your PadFone 2 to a power outlet is the best way to charge your PadFone 2.
- The input voltage range between the wall outlet and this adapter is AC 100V - 240V. The output voltage through the micro USB cable is DC 5V, 2A.





## Inserting your PadFone 2 into the PadFone 2 Station

---

**CAUTION:** We do not recommend adding a protective film or cover to your PadFone 2 as it can result in difficulty when inserting/removing the PadFone 2 to/from the PadFone 2 Station .

---

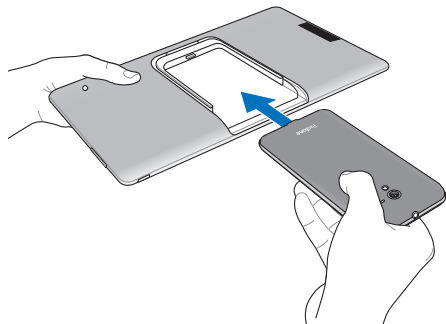
---

**NOTE:** Always keep the PadFone 2 Station bay clean to prevent dust or dirt from scratching or damaging your PadFone 2.

---

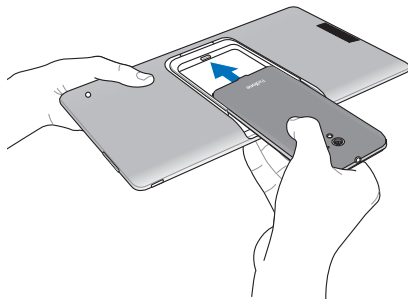
To insert your PadFone 2 into your PadFone 2 Station:

1. Align your PadFone 2 into the PadFone 2 bay sliding track.





2. Insert your PadFone 2 all the way into the bay until it is securely connected to the PadFone 2 Station. Your PadFone 2 briefly vibrates when the connection is secured.





After successfully inserting your PadFone 2 into the PadFone 2 Station, Android automatically adjusts the screen and apps to work on a tablet environment.

If an app was designed for a smaller screen, a zoom control will appear beside the clock.

---

**NOTE:** The following screen is for reference only and may appear differently from your device.

---




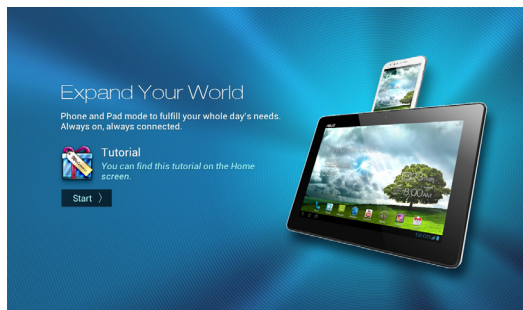




## Tutorial

Tutorial automatically starts the first time that you install your PadFone 2 into your PadFone 2 Station. It offers useful insights about the seamless possibilities of using the PadFone 2 and PadFone 2 Station.

To access it again, swipe your finger to the right and touch Tutorial  from the Home Screen.





## Removing your PadFone 2 from the PadFone 2 Station

Gently remove the PadFone 2 out from the PadFone 2 Station.

