

PadFone 2

Standard Operating Procedure for Upgrading the Firmware to Android™ Kit Kat

Download the latest firmware from the ASUS Support site and follow the instructions described in this guide to upgrade the firmware to Android™ Kit Kat.

CAUTION! Upgrading the firmware resets your device to its factory default settings and erases all your personal data. Use ASUS PC Tool to back up your personal data before upgrading the firmware.

NOTES:

- This firmware update SOP only applicable for WWE (World Wide English), Hong Kong, China, Starhub, Russia, and Japan firmware versions.
 - For Starhub version, after upgrading the firmware to Android™ Kit Kat, you need to download and reinstall some apps from Google Play, including ShortCutGames, StarHubGee, StarhubMusic, TV-StarHub, StarHubApps, APPVisor and MyStarHub.
 - For Japan version, after upgrading the firmware to Android™ Kit Kat, you need to download and reinstall some apps from Google Play, including i-Filter, BookLiveReader and WPS Office.
 - For China version, after upgrading the firmware to Android™ Kit Kat, you need to download and reinstall some apps from Google Play, including GFan Market, Android™ Market, Sina Weibo, Renren, Tencent QQ, Jinshan WPS Office, iQIYI, SouGou Input Method, and ASUS Webstorage.
-

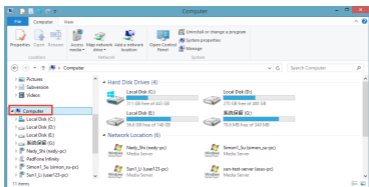
The following apps will be removed from your system after the Android™ 4.4 Kit Kat upgrade is complete:

1. My Net
2. Buddybuzz
3. Car Home
4. Watch Calendar
5. My Library
6. MyBitCast
7. My Desktop
8. App Backup (will be added in future firmware updates)
9. Pinpal
10. Black list (integrated with Contacts, no independent App icon now)
11. ASUS Sync
12. App Locker (integrated with Launcher, no independent App icon now)

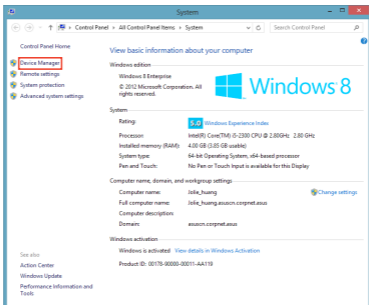
Updating the device driver

NOTE: Before updating the device driver, ensure that you have ticked **USB debugging** from **Settings > Developer options** on your phone. To show **Developer options**, go to **Settings > About > Software information**, and tap **Build number** for more than seven times.

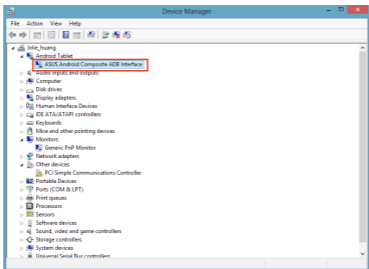
1. Use the USB cable bundled with your phone to connect it to your computer.
2. On your computer, right-click **Computer** and select **Properties**.



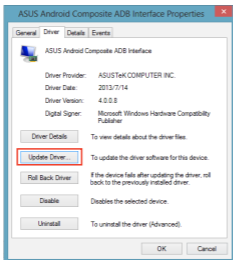
3. On the next screen, select **Device Manager**.



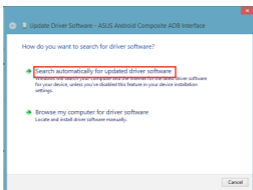
4. Find **ASUS Android Composite ADB Interface**. Right-click it and select **Properties**.



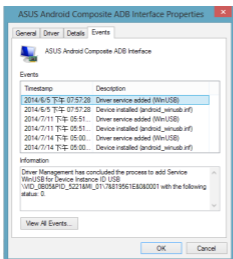
5. Click **Update Driver**.



6. Click **Search automatically for updated driver**.



7. Check the update history from the Events tab of the **ASUS Android Composite ADB Interface Properties**.



Installing ASUS PC Tool

ASUS PC Tool allows you to back up your personal data before the firmware update or restore your personal data after the firmware update.

To install ASUS PC Tool:

1. On your computer, visit the ASUS Support site at <http://support.asus.com>, and key in PadFone 2 in the **Search by** field.
2. Click the **Driver & Tools** tab, select **Android** from the **Select OS** dropdown list, and then select **Utilities**. From the **Utilities** panel, select **ASUS PC Tool** to download it.
3. After the download is complete, unzip the file. Double-click the **setup_x.x.xx.exe** file and follow the onscreen instructions to install ASUS PC Tool on your computer.

Backing up your personal data using ASUS PC Tool:

1. Launch ASUS PC Tool and tick **I Agree** on the **IMPORTANT NOTICE** screen. Click **OK** to continue.



2. Select PadFone 2 to connect to it.

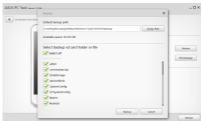


3. After the connection is established successfully, the basic information of your PadFone 2 is displayed. Click **Backup** to launch the Backup screen.



NOTE: The Backup button only shows on Android™ 4.1.2.

4. Select a location to store your files and click **Backup** to start backing up your personal data to your computer.



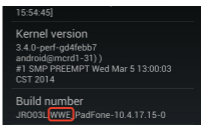
5. Wait until the backup process is complete. Click **OK** to exit.




Upgrading the firmware to Android™ Kit Kat


To upgrade the firmware to Android™ Kit Kat:

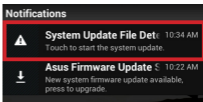
1. Tap **Settings** > **About PadFone** to check the country version in the **Build number**.
2. On your computer, visit the ASUS Support site at <http://support.asus.com>, and key in PadFone 2 in the **Search by field**.
3. Click the **Driver & Tools** tab, select **Android** from the **Select OS** dropdown list, and then select **Firmware**. From the **Firmware** panel, select and download the latest firmware for the country version of your PadFone 2.
4. Connect your PadFone 2 to your computer using the PadFone 2 signal cable. On your computer, click **Computer** > **PadFone 2** > **Internal storage** to open your PadFone 2's internal storage folder.
5. Unzip the compressed firmware file and save it to the root directory of your PadFone 2's internal storage folder.



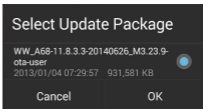
NOTE: You need only to unzip the compressed firmware file once.

6. Disconnect your PadFone 2 and remove the PadFone 2 signal cable from your computer. An  icon appears in your PadFone 2's notification area.

7. Tap  in the notification area and tap **System Update File Detected** to start the firmware update.



8. Select the downloaded firmware file and tap **OK** to confirm.



IMPORTANT: Before you proceed with the firmware update process, ensure that there is enough battery power in your device. If the battery power is low, connect the charger to your device.

9. When the **System Update Available** dialog box appears, tap **OK** to proceed with the system update. The whole update process may take around 10 minutes.

NOTE: Your device automatically reboots and updates the system.

10. After the system update is done, tap **OK**.

Restoring your personal data using ASUS PC Tool:

NOTE: Before using ASUS PC tool, ensure that you have ticked **USB debugging** from **Settings > Developer options**. To show **Developer options**, go to **Settings > About > Software information**, and tap **Build number** for more than seven times.

1. Launch ASUS PC Tool and tick **I Agree** on the **IMPORTANT NOTICE** screen. Click **OK** to continue.



2. Select PadFone 2 to connect to it.



3. After the connection is established successfully, the basic information of your PadFone 2 is displayed. Click **Restore** to start restoring your personal data.



NOTE: The Restore button only shows on Android™ 4.4.2 or later versions.

4. Wait until the restoration process is complete. Click **OK** to reboot your device.

