

HDMI Firmware Update Guide for Intel® NUC Products

**Intel® NUC7i3BN, NUC7i5BN and
NUC7i7BN**

November 2019



You may not use or facilitate the use of this document in connection with any infringement or other legal analysis concerning Intel products described herein. You agree to grant Intel a non-exclusive, royalty-free license to any patent claim thereafter drafted which includes subject matter disclosed herein.

No license (express or implied, by estoppel or otherwise) to any intellectual property rights is granted by this document.

All information provided here is subject to change without notice. Contact your Intel representative to obtain the latest Intel product specifications and roadmaps.

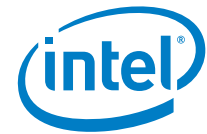
The products described may contain design defects or errors known as errata which may cause the product to deviate from published specifications. Current characterized errata are available on request.

Copies of documents which have an order number and are referenced in this document may be obtained by calling 1-800-548-4725 or by visiting: <http://www.intel.com/design/literature.htm>.

Intel and the Intel logo are trademarks of Intel Corporation or its subsidiaries in the U.S. and/or other countries.

*Other names and brands may be claimed as the property of others.

Copyright © 2019, Intel Corporation. All rights reserved.



Contents

1.0	HDMI Firmware Update Process.....	5
1.1	Update the HDMI Firmware.....	5



Revision History

Date	Revision	Description
November 2019	1.0	Initial release.



1.0 HDMI Firmware Update Process

This document guides you on updating the HDMI firmware on Intel® NUC family NUC7i3BN, NUC7i5BN and NUC7i7BN. The HDMI Firmware Update Tool **only** runs in Windows 10.

1.1 Update the HDMI Firmware

1. Connect a HDMI monitor to the **HDMI Port**.
2. Turn on the Intel NUC.
3. In Windows File Explorer, navigate to the folder where you unzipped the download.
4. Right-click the file **BobcatAuxISPTool.exe** and select, **Run as administrator** to launch the update tool.
5. Click **Get FW Version** to display the current firmware version.

Bobcat AUX-ISP Tool v2.08

Graphics Adapter: Intel (LS-PCON): 0x0D Refresh

ISP File Setup

Driver File: bobcatAuxISPTool_v2.08\bin\bobcat_aux-isp_driver_v2.0.1_cut2.2_aux.bin Browse

FW File: I:\MCDP2800_C21_C22_V1.71.00_DAWSON_CMDB_190129_MP_V1.6.BIN Browse

☐ Program Device Certificate

Key File: I:\Update-2.08\NUC_HDMI_FW_update_2019\BobcatAuxISPTool_v2.08\bin Browse

☐ Program Customized Data Block

Custom Data: Browse

Output/Status:

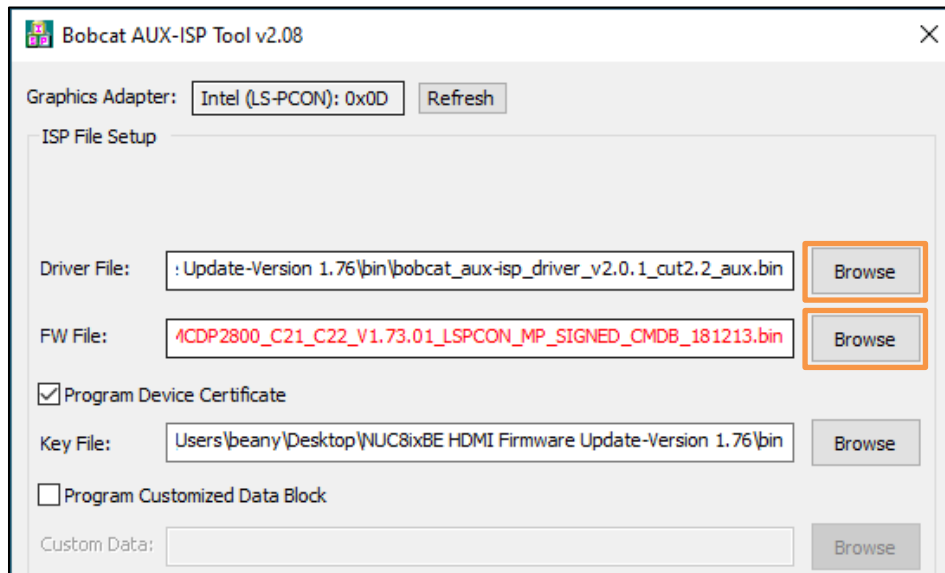
Current on-board F/W Version: Bobcat App: MC2800 v1.71 (cut2.2)

CMDB: Ver:0.3 (Custom Ver: 1.1)

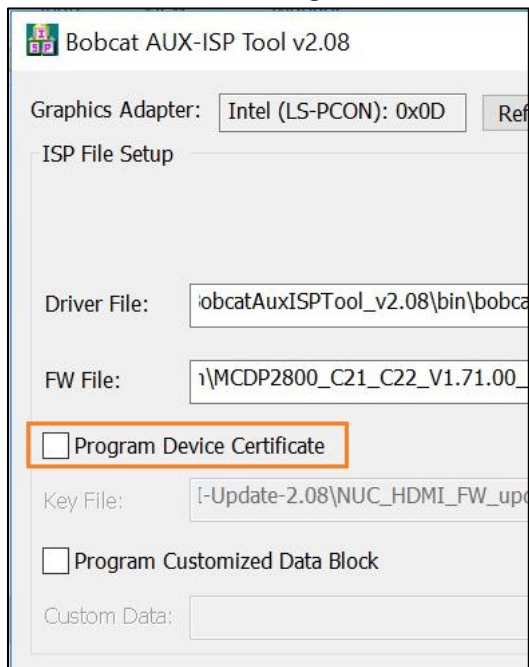
Verify CMDB Verify Certificate Start Write Certificate Get FW Version

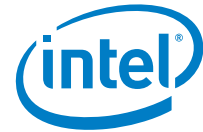


6. If the firmware needs updating, browse to the **/bin** folder for the Driver and FW Files:
- Driver File: **bobcat_aux-isp_driver_v2.0.1_cut2.2_aux**
 - FW File: **MCDP2800_C21_C22_V1.77.93_LSPCON_MP_FHC_SIGNED_CMDB_BN_191003**



7. Uncheck the box for Program Device Certificate:





8. Click the **Start** button and confirm that you want to update the firmware.

NOTE: The screen will go black for up to a minute. Do NOT turn off the Intel NUC or the monitor until the update is complete.

9. Click OK when the update finishes.
10. Restart the Intel NUC.

To check the new HDMI firmware version:

1. Double-click the file **BobcatAuxISPTool.exe** to launch the update tool.
2. Click **Get FW Version** to display the firmware version.

