

Zenfone 8 Flip

ZS672KS **User Guide**

Care and safety

Guidelines



Road safety comes first. We strongly recommend not to use your device when driving or operating any type of vehicle.



This device should only be used in environments with ambient temperatures between 0°C (32°F) and 35°C (95°F).



Turn off your device in restricted areas where the use of mobile devices is prohibited. Always obey rules and regulations when in restricted areas, such as, in aircraft, movie theater, in hospitals or near medical equipment, near gas or fuel, construction sites, blasting sites and other areas.



Use only AC adapters and cables approved by ASUS for use with this device. Refer to the rating label on the bottom of your device and ensure that your power adapter complies with this rating.



Do not use damaged power cables, accessories, and other peripherals with your device.



Keep your device dry. Do not use or expose your device near liquids, rain, or moisture.



You can put your device through x-ray machines (such as those used in conveyor belts for airport security), but do not expose the device to magnetic detectors and wands.



The device screen is made of glass. If the glass gets broken, stop using the device and do not touch the broken glass parts. Immediately send device for repair to ASUS-qualified service personnel.



Do not listen at high volume levels for long periods to prevent possible hearing damage.



Disconnect the AC power before cleaning your device. Use only a clean cellulose sponge or chamois cloth when cleaning your device screen.



Send device for repair to ASUS-qualified service personnel only.

Proper disposal



Risk of explosion if battery is replaced by an incorrect type. Dispose of used batteries according to the instructions.



DO NOT throw the battery in municipal waste. The symbol of the crossed out wheeled bin indicates that the battery should not be placed in municipal waste.



DO NOT throw this product in municipal waste. This product has been designed to enable proper reuse of parts and recycling. The symbol of the crossed out wheeled bin indicates that the product (electrical, electronic equipment and mercury-containing button cell battery) should not be placed in municipal waste. Check local regulations for disposal of electronic products.



DO NOT throw this product in fire. DO NOT short circuit the contacts. DO NOT disassemble this product.



WARNING

Cancer and Reproductive Harm-

www.P65Warnings.ca.gov

ZenTalk Fans Forum

http://www.asus.com/zentalk/global_forward.php



NOTES:

- For more legal and e-labelling information, check on your device from **Settings > System > Regulatory labels** and **Settings > System > About phone > Legal information**.
 - The app descriptions shown in this manual are for reference purposes only, and may not exactly match what you see on your device.
-

Contents

1	Basics	
	Welcome!.....	7
	Get your ASUS Phone ready!.....	8
	Starting for the first time.....	14
	Using the touchscreen.....	15
2	There's no place like Home	
	Zen Home features	18
	Home screen	18
	Quick settings	19
	Notifications	20
	Personalizing your Home screen	21
	Widgets	21
	Wallpapers	22
	Setting up the date and time.....	23
	Setting up your ringtone and alert sounds.....	23
	Lock Screen	24
	Customizing your lock screen.....	24
	Fingerprint ID sensor.....	25
	Starting your ASUS phone for the first time.....	25
	Setting up fingerprint ID from Settings	26
	Face Unlock	27
	Setting up face unlock from Settings.....	27
3	Work hard, play harder	
	Chrome	30
	Launching Chrome	30
	Sharing pages.....	31
	Bookmarking pages	31
	Clearing the browsing data	31
	Gmail.....	32
	Google Calendar	33
	Creating events	33
	Editing or removing events	33
	Creating reminders	34
	Editing or removing reminders	34
	File Manager.....	35
	ASUS Data Transfer	36
4	Keeping in touch	
	Call in style	37
	Dual SIM feature.....	37
	Making calls.....	39
	Calling your favorite contacts	41
	Receiving calls	41

	Other call options.....	42
	Recording calls	43
	Managing contacts	44
	Contacts Settings	44
	Setting up your profile	44
	Adding contacts.....	45
	Marking your favorite contacts	46
	Social networking with your contacts	47
	Send messages and more	48
	Messages.....	48
5	Fun and entertainment	
	Using a headset.....	49
	Connecting the audio jack.....	49
	YT Music.....	50
6	Your precious moments	
	Capture moments	51
	Launching the Camera app	51
	Photo Locations	52
	Advanced camera features	52
	Time lapse	53
	Using the Gallery	54
	Viewing the photo location	54
	Editing images.....	54
	Sharing files from the Gallery.....	54
	Deleting files from the Gallery.....	55
7	Staying connected	
	Mobile network.....	56
	Enabling the mobile network	56
	Wi-Fi	56
	Enabling Wi-Fi.....	56
	Connecting to a Wi-Fi network.....	57
	Disabling Wi-Fi.....	57
	Bluetooth®	57
	Enabling Bluetooth®	57
	Pairing your ASUS Phone to a Bluetooth® device.....	58
	Unpairing your ASUS Phone from the Bluetooth® device.....	58
	Tethering	59
	Wi-Fi Hotspot	59
	USB Tethering	60
	Bluetooth Tethering.....	60
8	Travel and Maps	
	Weather	61
	Launching the Weather app.....	61
	Weather home screen.....	62

Clock	63
Alarm clock	63
World clock	64
Stopwatch	64
Timer	65
9 Zen Everywhere	
 Special Zen Tools.....	66
Calculator	66
Sound Recorder	67
 Mobile Manager.....	69
10 Maintain your Zen	
 Keeping your device up-to-date.....	70
Updating your system	70
Storage	70
Backup.....	70
Reset.....	70
Securing your ASUS Phone.....	71

Appendix

Welcome!

Explore the intuitive simplicity of ASUS ZenUI!

ASUS ZenUI is a charming and intuitive interface exclusively for ASUS Phones. It provides you with special apps, which are integrated in or with other apps, to fit your unique individual needs and make your life easier while letting you have fun with your ASUS Phone.



Camera

With PixelMaster technology, capture those precious moments in vivid and high-quality photos and videos.



Messages

Messages, an intuitive and delightful app, lets you send/receive SMS/MMS messages, as well as send group texts, photos, or audio messages. You can add emojis or stickers to your messages, share your location, archive your messages, and easily block SMS senders. You can also take photos or record videos and easily share these files.



File Manager

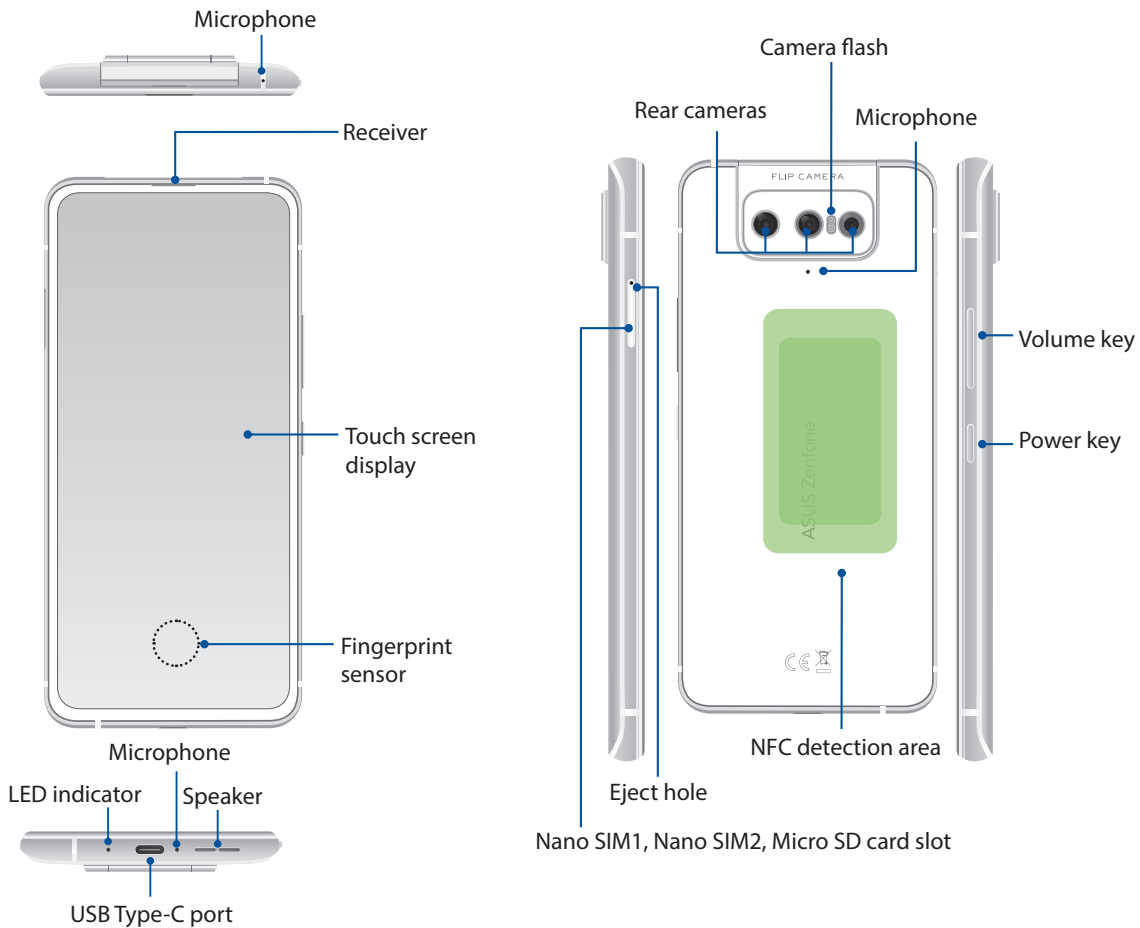
File Manager allows you to easily locate and manage your data on the internal storage of your ASUS Phone and its connected external storage devices.

NOTE: Availability of ASUS ZenUI apps vary per region and ASUS Phone model. Swipe up on your Home screen to check the apps available on your ASUS Phone.

Get your ASUS Phone ready!

Parts and features

Take a hold of your device and have it running in a jiffy.



WARNING!

- To avoid network connection and battery issues:
 - DO NOT place a metallic sticker on the antenna area.
 - DO NOT use a metallic protective frame/case on your ASUS Phone.
 - DO NOT cover the antenna area with your hands or other objects while using some functions such as making calls or using the mobile data connection.
- We recommend that you use ASUS-compatible screen protectors. Using non-ASUS-compatible screen protectors may cause your ASUS Phone's sensor to malfunction.

NOTE: The microSD card slot supports microSD and microSDXC card formats.

IMPORTANT!

- We do not recommend using a screen protector as it can interfere with the proximity sensor. If you want to use a screen protector, ensure that it does not block the proximity sensor.
 - Keep the device, particularly the touch screen, dry all the time. Water or other liquids can cause the touch screen to malfunction.
-

Installing a nano SIM card / memory card

Both Nano SIM card slots support GSM/GPRS/EDGE, WCDMA/HSPA+/DC-HSPA+, FDD-LTE, TD-LTE, and 5G NR Sub-6 network bands.

IMPORTANT! Both Nano SIM cards can connect to VoLTE 4G calling service, but only one can connect to 5G NR Sub-6 data service at a time.

NOTES:

- To prevent connector damage, ensure to use a standard nano SIM card without a SIM adapter or the use of a cutter.
 - Actual network and frequency band usage depends on network deployment in your area. Contact your telecom carrier if 5G NR Sub-6 support and VoLTE (4G Calling) service are available in your area.
-

Your ASUS Phone supports a microSD and microSDXC memory card with up to 2 TB capacity.

NOTES:

- Some memory cards may not be compatible with your ASUS Phone. Ensure that you use only compatible memory cards to prevent loss of data, damage to your device, or memory card, or both.
 - The microSD card is sold separately.
-

CAUTION! Be extra careful when handling a nano SIM card / memory card. ASUS is not responsible for any data loss or damage incurred to your nano SIM cards / memory card.

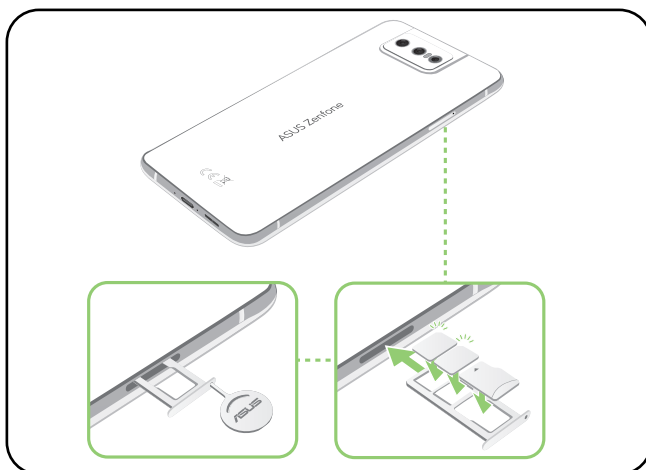
To install a Nano SIM card / memory card:

1. Push the bundled eject pin into the hole on the card slot to eject the tray out.

CAUTION!

- Be careful not to damage the card slot or injure your fingernails.
 - Do not use sharp tools or solvent on your device to avoid scratches on it.
-



2. Insert the nano SIM or microSD card into the appropriate slot.



3. Gently push the tray back in until it's securely closed.

Removing a nano SIM /memory card

CAUTION!

- Be extra careful when handling a nano SIM card / memory card. ASUS is not responsible for any data loss or damage incurred to your nano SIM cards / memory card.
 - Eject the memory card properly to safely remove it from device. To eject the memory card, swipe down from the top of your screen and tap  > **Storage**, then under Portable storage, tap  beside **Micro SD**.
-

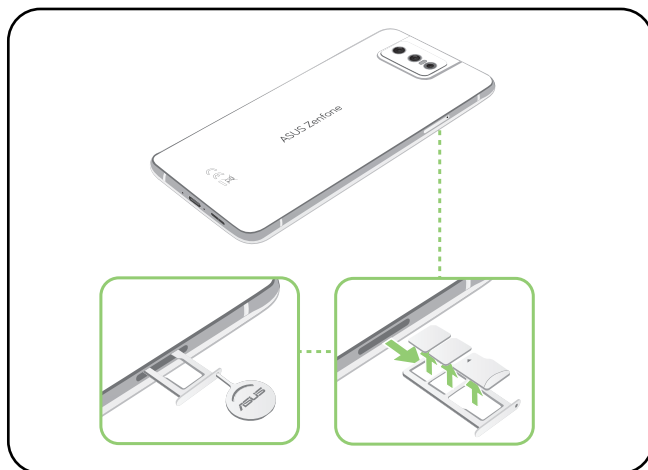
To remove a nano SIM card / memory card:

1. Push the bundled eject pin into the hole on the card slot to eject the tray out.
-

CAUTION!

- Be careful not to damage the card slot or injure your fingernails.
 - Do not use sharp tools or solvent on your device to avoid scratches on it.
-

2. Remove the nano SIM or microSD card from the card slot.



3. Gently push the tray back in until it's securely closed.

Charging your ASUS Phone

Your ASUS Phone comes partially charged but you must charge it fully before using it for the first time. Read the following important notices and cautions before charging your device.

IMPORTANT!

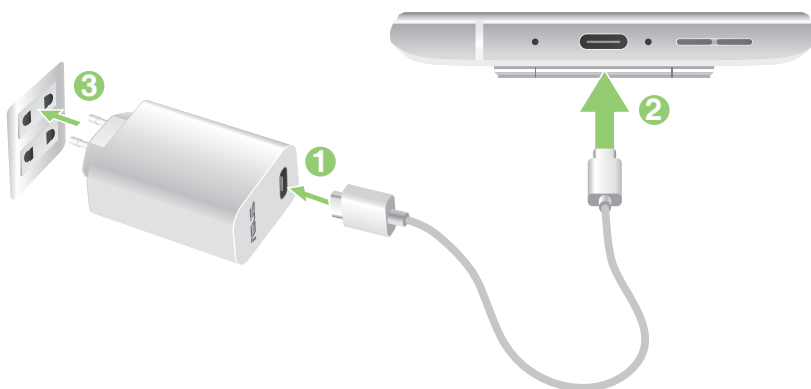
- Peel off the protective film on the AC power adapter and USB Type-C cable before using it with your device.
 - Ensure to plug the AC power adapter to a compatible power outlet. You can plug the AC power adapter to any compatible 100~240 V outlet.
 - The output voltage of the AC power adapter for this device is +5V-10V \approx 3A, 30W.
 - When using your ASUS Phone while plugged-in to a power outlet, the power outlet must be near your device and easily accessible.
 - To conserve electricity, unplug the AC power adapter from the power outlet when not in use.
 - Do not place heavy objects on top of your ASUS Phone.
-

CAUTION!

- While charging, your ASUS Phone can become warm. This is normal, however, if your device becomes unusually hot, disconnect the USB Type-C cable from your device and send the device, including the AC power adapter and cable to an ASUS-qualified service personnel.
 - To prevent any damage to your ASUS Phone, AC adapter, or USB Type-C cable, ensure that the USB Type-C cable, AC adapter, and your device are connected properly before charging.
-

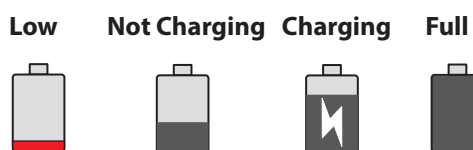
To charge your ASUS Phone:

1. Connect the USB cable to the power adapter.
2. Connect the USB cable to your ASUS Phone.
3. Plug the AC power adapter to a grounded power outlet.



IMPORTANT!

- When using your ASUS Phone while it is plugged to a power outlet, the grounded power outlet must be near to the unit and easily accessible.
- When charging your ASUS Phone through your computer, ensure that you plug the USB Type-C cable to your computer's USB port.
- Avoid charging your ASUS Phone in an environment with ambient temperature of above 35°C (95°F).
- Charge your ASUS Phone for eight (8) hours before using it in battery mode for the first time.
- The status of battery charge is indicated by the following icons:



NOTES:

- For safety purposes, use **ONLY** the bundled power adapter and cable to avoid damaging your device and prevent the risk of injury.
 - For safety purposes, use **ONLY** the bundled power adapter and cable to charge your ASUS Phone.
-

4. When fully-charged, disconnect the USB cable from your ASUS Phone first before unplugging the AC power adapter from the power outlet.

NOTES:

- You can use your device while charging but it may take longer to fully charge the device.
 - Charging your device via USB port of a computer may take longer to fully charge the device.
 - If your computer does not provide enough power for charging via USB port, charge your ASUS Phone using the AC power adapter plugged to a power outlet instead.
-

Turning your ASUS Phone on or off

Turning your device on

To turn your device on, press and hold the power button until your device vibrates and starts up.

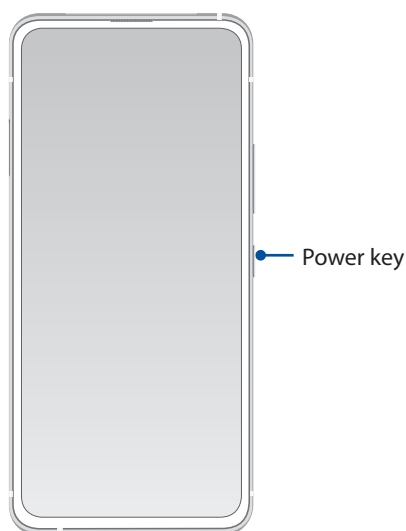
Turning your device off

To turn your device off:

1. If your screen is turned off, press the power button to turn it on. If your screen is locked, unlock the device screen.
2. Press and hold the power button, then when prompted, tap **Power off**.

Sleep mode

To put your device in sleep mode, press the power button once until the screen turns off.



NOTE: When your system is down, press and hold the Volume Down Key + Power Key simultaneously for 8 seconds to restart your phone. If this doesn't work, try again by pressing and holding the keys again for 12 seconds.

Starting for the first time

When you turn your ASUS Phone on for the first time, Setup Wizard will guide you through the setup process. Follow the onscreen instructions to select your language, set up your mobile network, Wi-Fi and security features, and sync accounts.

Use your Google or ASUS account to set up your device, if you do not have a Google or ASUS account yet, go ahead and create one.

Google Account

Using a Google account allows you to fully utilize these Android OS features:

- Organize and see all your information from anywhere.
- Automatically backup all your data.
- Leverage Google services conveniently from anywhere.

ASUS Account

Having an ASUS account gets you to enjoy the following perks:

- Personalized ASUS support service and warranty extension for registered products.
- Receive the latest device and firmware updates.

Battery power conservation tips

The battery charge is the lifeline of your ASUS Phone. Here are some battery power conservation tips that help preserve the power of your ASUS Phone battery.

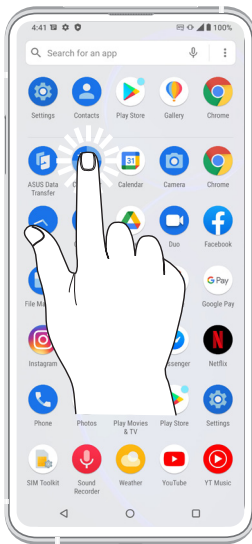
- Close all running apps that are not in use.
- When not in use, press the power button to put the device in sleep mode.
- Decrease brightness of display.
- Keep the speaker volume to a low level.
- Disable Wi-Fi feature.
- Disable Bluetooth feature.
- Disable the screen auto-rotate feature.
- Disable all auto-sync features in your device.

Using the touchscreen

Use these gestures on the touchscreen to launch apps, access some settings, and navigate your ASUS Phone.

Launching apps

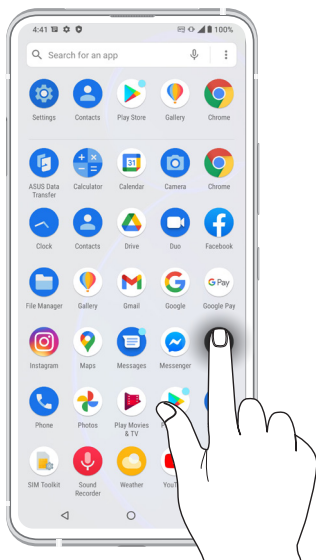
To launch an app, simply tap on it.



Moving or deleting items

Do either of the following:

- To move an app or widget, tap and hold then drag it to the location where you want it to be.
- To delete an app or widget, tap and hold it then tap **Uninstall**.



Moving through pages or screens

Do either of the following:

- Swipe your finger to the left or to the right to switch between screens or to open Google Search page.
- Scroll your finger up or down to go through web pages or list of items.



Zooming in

Spread apart your two fingers on the touch panel to zoom in an image in Photos or Maps, or zoom in a web page.



Zooming out

Bring together your two fingers on the touch panel to zoom out an image in Photos or Maps, or zoom out of a web page.



NOTE: You may not be able to zoom in/out of some web pages as these pages may have been designed specifically to fit your mobile screen.

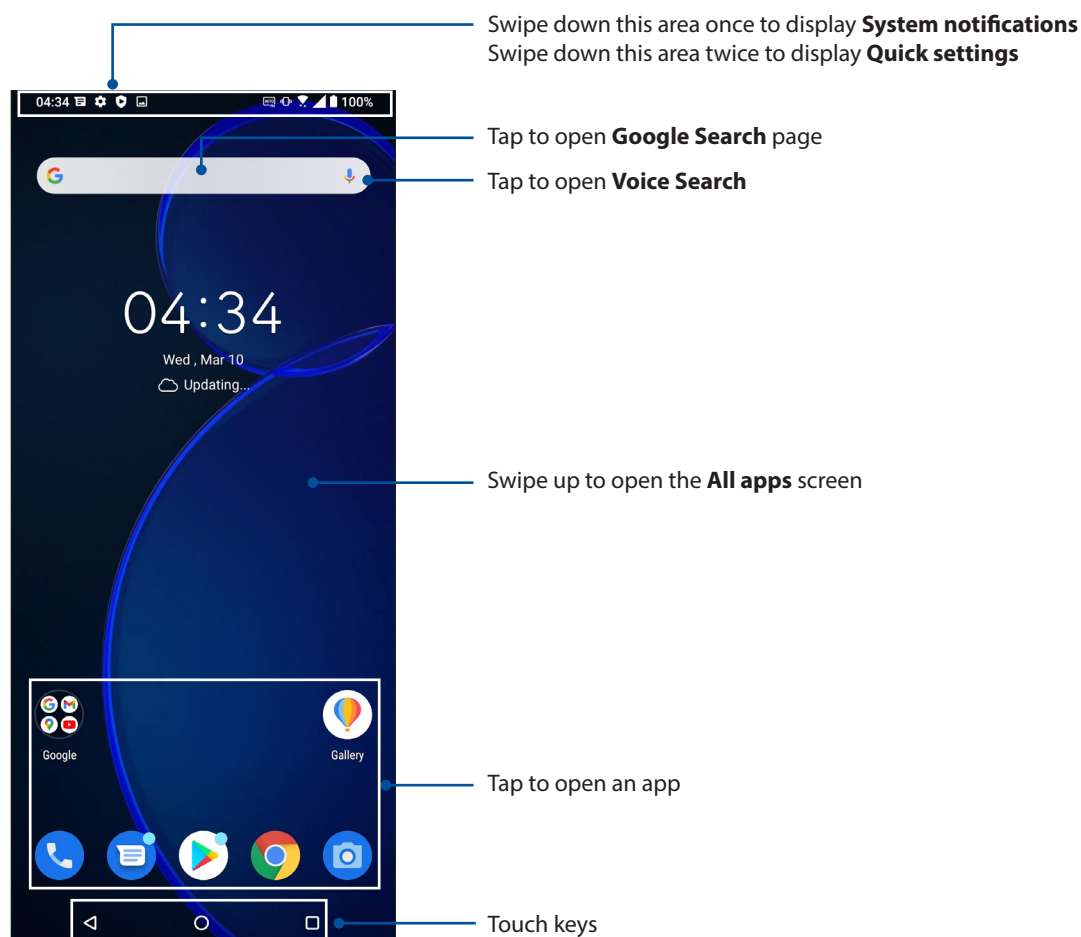
There's no place like Home

2

Zen Home features

Home screen

Get reminders of important events, app and system updates, weather forecasts, and text messages from people who really matter to you, right from your Home screen.

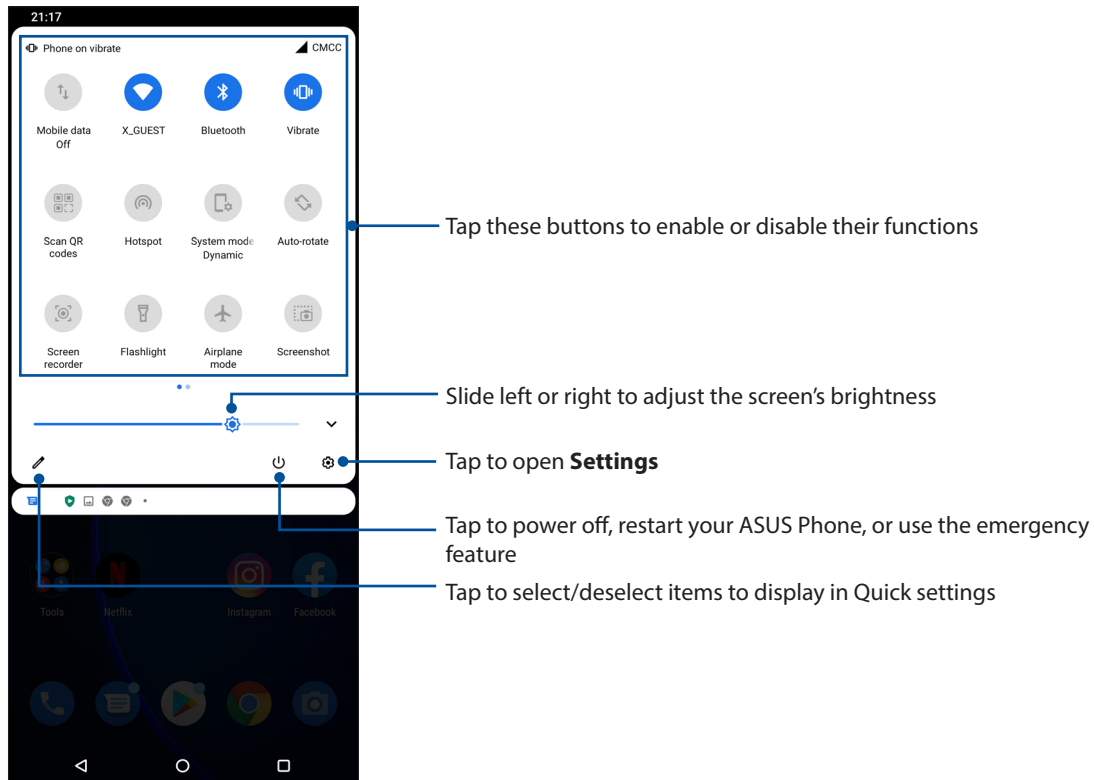


Quick settings

The Quick settings panel provides a one-tap access to some of the wireless features and settings of your ASUS Phone. Each of these features are represented by an icon.



To launch the Quick settings panel, swipe down twice from the top of your screen.

NOTE: A blue icon indicates that the feature is currently enabled while a gray icon indicates a disabled feature.



Adding features

To add features from the Quick Settings panel:

1. Launch Quick settings then tap .
2. Swipe up **HOLD AND DRAG TO ADD TILES**.
3. Under **HOLD AND DRAG TO ADD TILES**, tap and drag an icon up to add it to the Quick Settings panel.
4. Tap  to go back and view the current Quick Settings panel.

Removing features

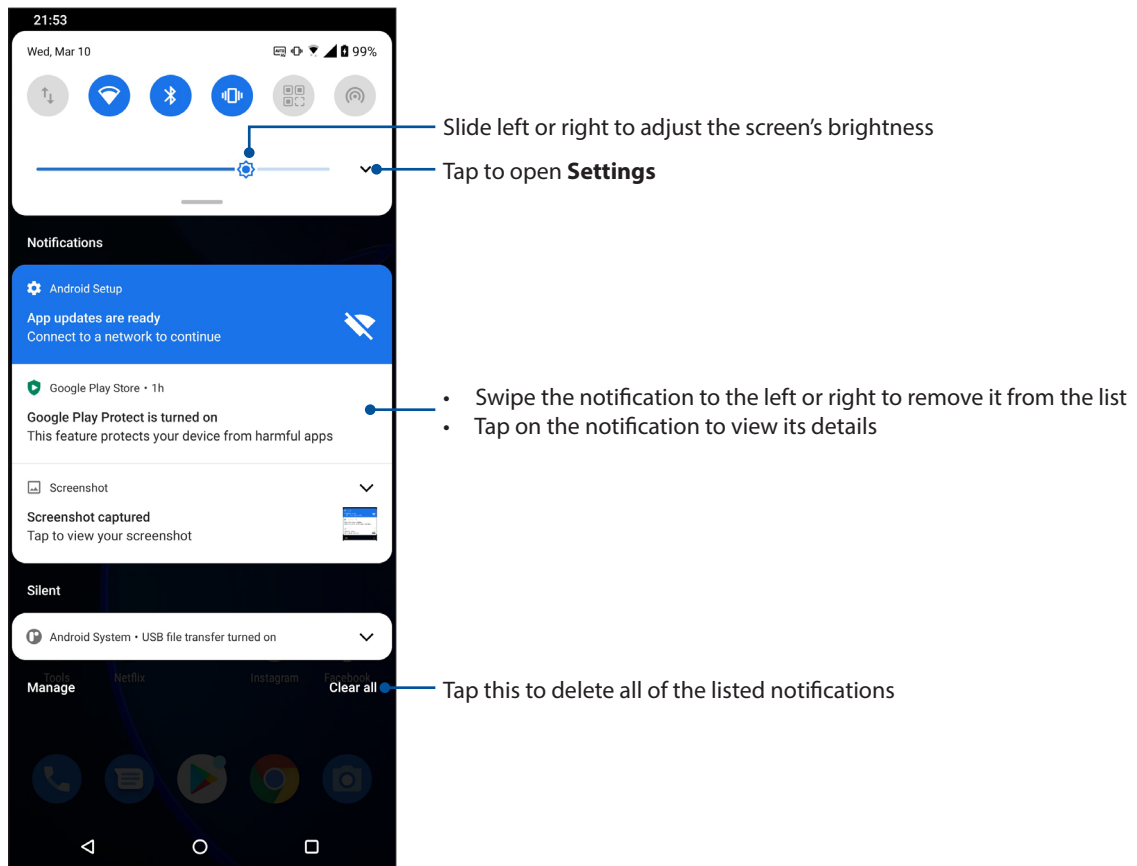
To remove existing features from the Quick Settings panel:

1. Launch Quick settings then tap .
2. Tap and drag an icon below **HOLD AND DRAG TO REARRANGE TILES** to remove it from the Quick Settings panel.

Notifications

From the notifications panel, you can see the latest updates done and system changes made on your ASUS Phone. Most of these changes are data and system-related.

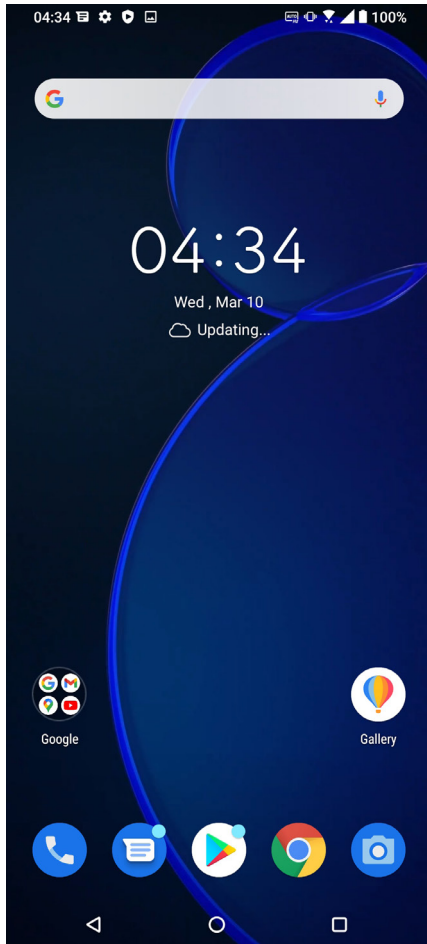
To launch the notifications panel, swipe down from the top of your screen.



Personalizing your Home screen

Stamp your own personality on your Home screen. Select an attractive design as your wallpaper, and add widgets for a quick review of important info. You can also add more pages so you can add and quickly access or view more apps or widgets on your Home screen.

To launch the Manage Home screen, tap and hold an empty area on your Home screen.



Widgets

You can put widgets, which are small dynamic apps, on your Home screen. Widgets provide you with quick-views of the weather forecast, calendar events information, battery status, and more.

Adding widgets

To add a widget:

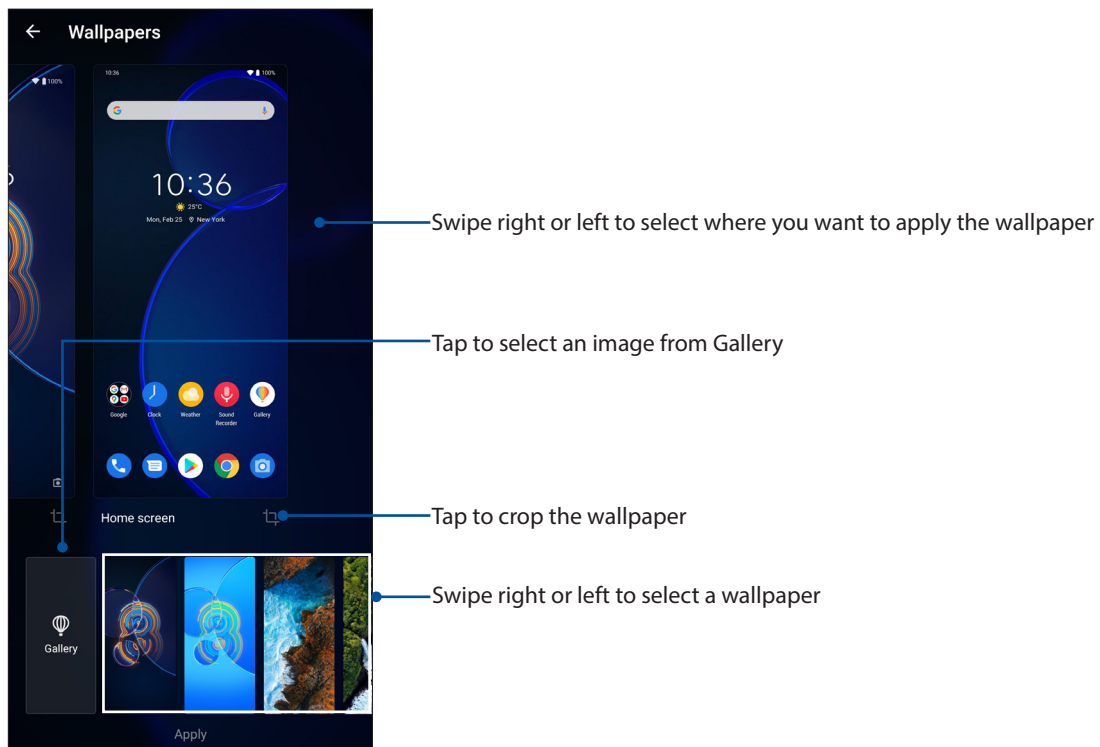
1. Tap and hold an empty area on your Home screen and select **Widgets**.
2. From the Widgets screen, tap and hold a widget, then drag it to an empty area on your Home screen.

Removing widgets

From your Home screen, tap and hold a widget, then drag it to **Remove** on top of your screen.

Wallpapers

Let your apps, icons, and other Zen elements sit on an attractively designed wallpaper. You may add a translucent background tint to your wallpaper for readability and clarity. You can also select an animated wallpaper to make your screen come alive.



Applying wallpaper

To apply wallpaper:

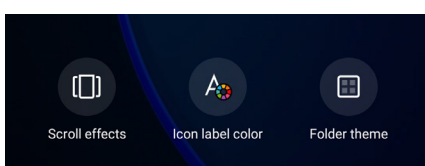
1. Tap and hold an empty area on your Home screen and select **Wallpapers**.
2. Select to set wallpaper to **Lock screen** or **Home screen**.
3. Select a wallpaper, and then tap **Apply**.

NOTE: You can also set up your wallpaper settings from **Settings > Display > Wallpaper**.

Editing your Home screen

You can extend your Home screen, select a scroll effect, change the icon label color, and select the folder theme.


1. Tap and hold an empty area on your Home screen and select **Edit Home screen**.
2. Tap a feature to edit your Home screen.



Setting up the date and time

By default, the date and time displayed on your Home screen automatically syncs with your mobile provider's settings.

To change the date and time settings:


1. Launch the Settings screen by doing either of the following:
 - Launch Quick Settings then tap .
 - Swipe up on your Home screen then tap **Settings**.
2. Scroll down the Settings screen and select **System > Date & time**.
3. Slide **Use network-provided time** and **Use network-provided time zone** to off.
4. Tap **Date** and **Time** to adjust the date and time.
5. Tap **Time Zone** to select the time zone.
6. You can opt to use the 24-hour format, if you prefer.

NOTE: See also [Clock](#).

Setting up your ringtone and alert sounds

Set up the sound for your phone ringtone, notifications such as text messages, emails, and event alerts. You can also choose to enable or disable the dial pad touch tones, touch sounds, screen lock sound, or you can choose to have your ASUS Phone vibrate when you tap on it.

To set up the sound settings:

1. Launch the Settings screen by doing either of the following:
 - Launch Quick Settings then tap .
 - Swipe up on your Home screen then tap **Settings**.
2. Select **Sound & vibration** and set up your preferred sound settings.

Lock Screen

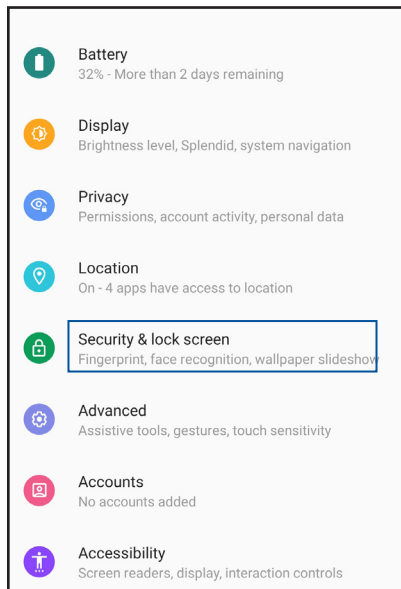
By default, the lock screen appears after turning on your device and while waking it up from sleep mode. From the lock screen, you can proceed to your device's Android® system by swiping on your touch screen panel.

Your device's lock screen can also be customized to regulate access to your mobile data and apps.

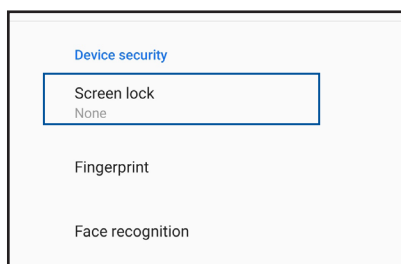
Customizing your lock screen

If you want to change your lock screen settings from the default **Swipe** option, refer to the following steps:

1. Launch Quick Settings then tap  .
2. Select **Security & lock screen**.



3. In the next screen, tap **Screen lock**.



4. Tap the screen lock option you would like to use.

NOTE: For more details, see [Securing your ASUS Phone](#).

Fingerprint ID sensor

Fingerprint ID sensor prevents others from using your ASUS phone without your permission. You can use your fingerprint to unlock your device, access your phone calls and data. When you set up your fingerprint ID, you also need to set up your screen lock method for device startup.

Starting your ASUS phone for the first time

To set up your fingerprint ID when using your ASUS Phone for the first time:


1. Ensure that the fingerprint identification module and your finger are clean and dry.
2. From the Welcome page, follow the on-screen instructions to the **Protect your phone** page and tap **Set up fingerprint**.
3. Tap **Continue** to choose a screen lock method, and then follow the instructions to the **Locate fingerprint scanner** page, and tap **Next**.
4. Find the fingerprint scanner on the front of your device, adjust your finger and try to cover different areas of your finger repeatedly until your fingerprint is captured.

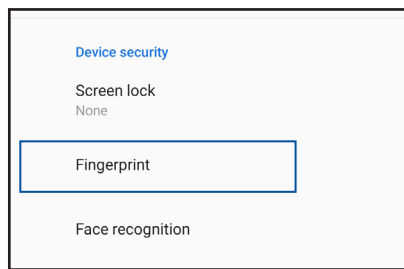


5. Tap **Next** to complete the setup.

Setting up fingerprint ID from Settings

To set up your fingerprint ID from **Settings**:

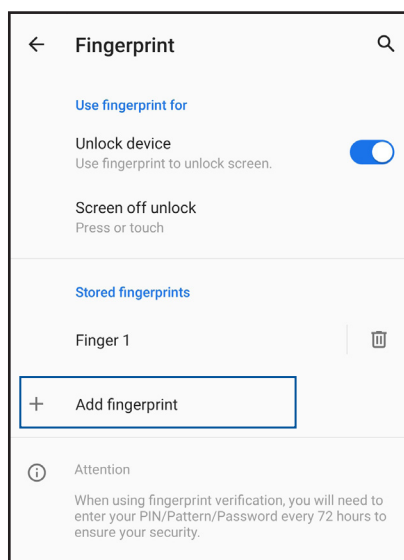
1. Ensure that the fingerprint scanner and your finger are clean and dry.
2. Launch the Settings screen by doing either of the following:
 - Launch Quick Settings then tap .
 - Swipe up on your Home screen then tap **Settings**.
3. Scroll down the **Settings** screen and select **Security & lock screen > Fingerprint**.



4. Unlock your phone if it's secured. If not, follow the instructions to set up your backup screen lock method.

NOTE: For more details, see [Securing your ASUS Phone](#).

5. Tap **Add fingerprint**.




6. Repeatedly place-and-lift your finger on the scanner until your fingerprint is captured.
7. Tap **Done** to complete the setup.

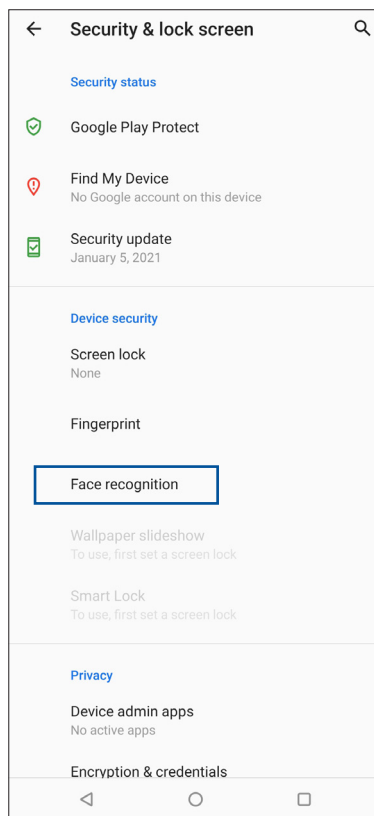
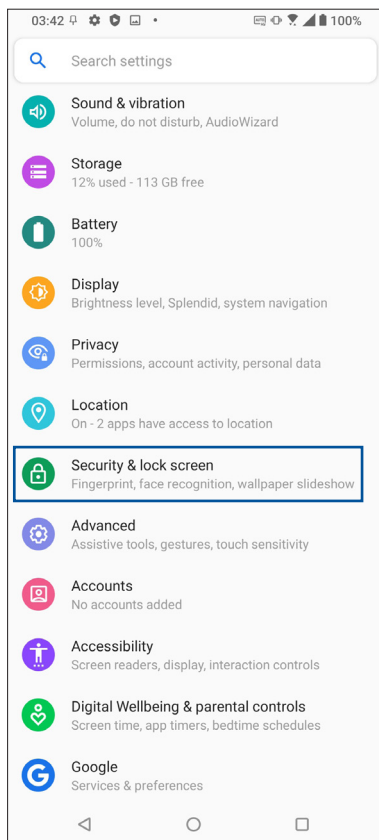
Face Unlock

Face unlock prevents others from using your ASUS phone without your permission effortlessly. You can light up your ASUS Phone's screen and look at it to unlock your device, access your phone's home screen in one second. When you set up your face unlock, you also need to set up your screen lock method for device startup.

Setting up face unlock from Settings

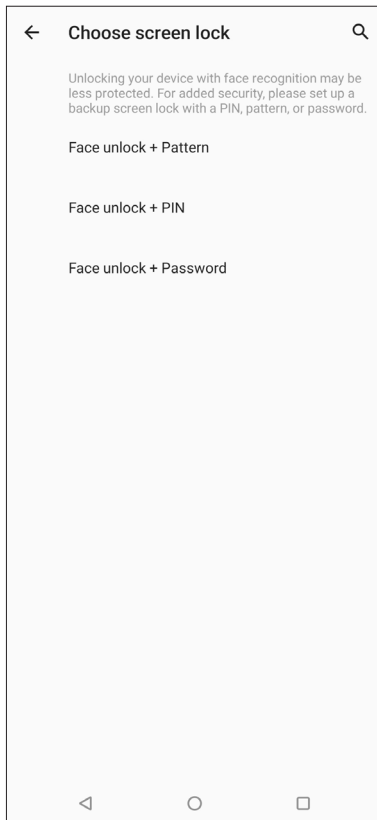
To set up face unlock from **Settings**:

1. Launch the Settings screen by doing either of the following:
 - Launch Quick settings then tap .
 - Swipe up on your Home screen and tap **Settings**.
2. Scroll down the Settings screen and select **Security & lock screen > Face recognition**.

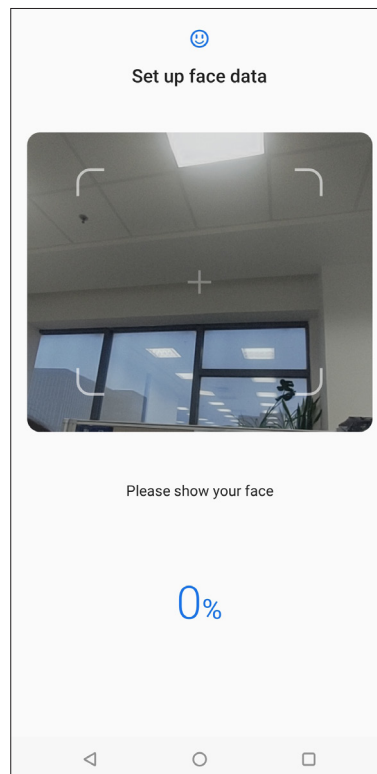
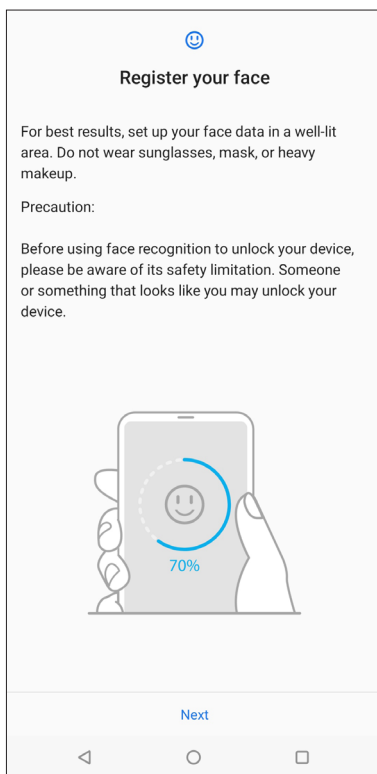


3. Tap **Continue**.

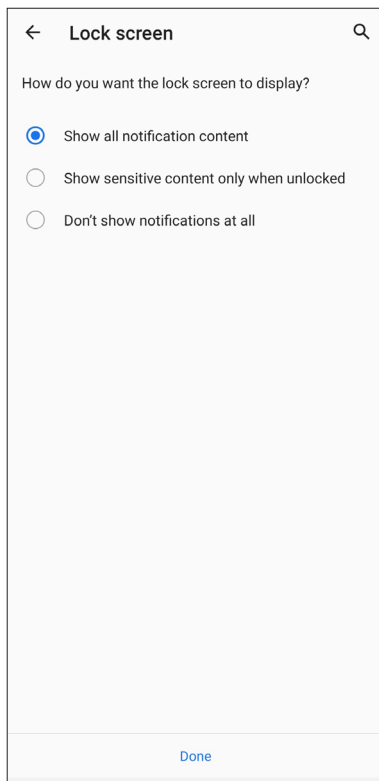
4. Follow the instructions to set up your backup screen lock method.



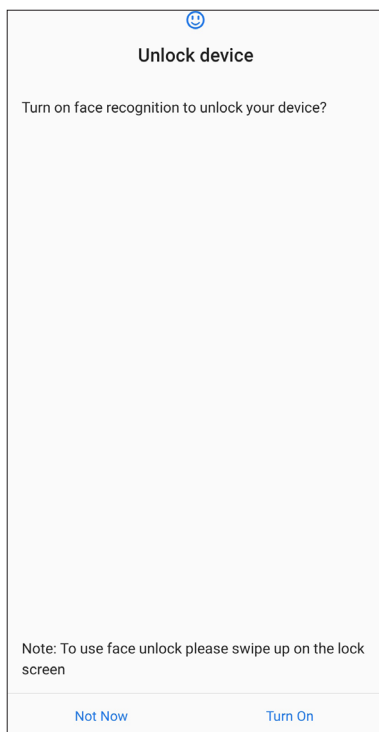
5. Tap **Next** and follow the instructions to register your face.



6. Select how you want to display your notifications on the lock screen, then tap **Done**.



7. When finished, tap **Turn On** to enable face recognition to unlock your phone.



NOTES:

- Show your mouth, nose and opened eyes while using face unlock feature.
 - Wearing sunglasses or insufficient light will lead to failure of face unlock.
-

Work hard, play harder

3

Chrome


Chrome for Android lets you enjoy the same fast, secure and stable web browsing experience as that on the desktop Chrome. Sign in to your Google account to sync tabs, bookmarks, and browsing history across all your devices. If you don't have a [Google account](#), register for one.

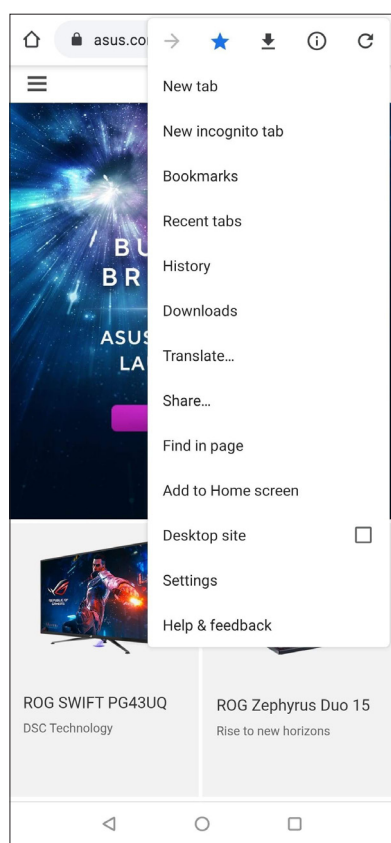
NOTE: For details on creating a Google account, see [Gmail](#).

IMPORTANT! Before doing any Internet surfing or Internet-related activities, ensure that your ASUS Phone is connected to a Wi-Fi or mobile network. For more details, see [Staying connected](#).

Launching Chrome


From your Home screen, do either of the following to launch Chrome:

- Tap .
- Swipe up on your Home screen then tap **Chrome**.



Sharing pages




Share interesting pages from your ASUS Phone to others via an email account, cloud storage account, Bluetooth, or other ASUS Phone apps.

1. Launch Chrome.
2. From a web page, tap  > **Share...**
3. Tap to select a way to share the page.

Bookmarking pages


Bookmark your favorite pages or websites so you can go back and browse them again.

To bookmark a page:

From the page, tap  > . To view your favorite pages, tap  > **Bookmarks**, then select the page you want to view or access.

Clearing the browsing data

Clear the browsing data that are temporarily stored in your ASUS Phone to improve the loading performance of your Chrome browser. The browsing data includes browsing history, cache, cookies/site data, saved passwords, and autofill data.

1. Launch the browser.
2. Tap  > **Settings** > **Privacy and security** > **Clear browsing data**.
3. Select the browsing data that you want to delete.
4. When done, tap **Clear data**.

Gmail

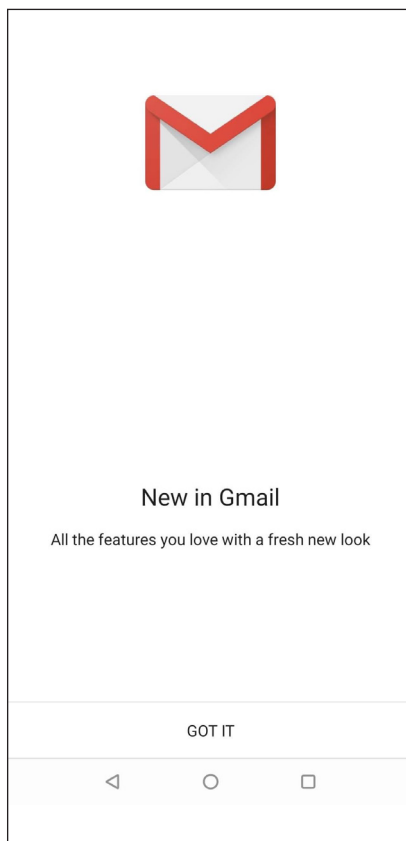
Use Gmail to set up your Google account to get into Google-related services and apps as well as receive, send, and browse emails right from your ASUS Phone. You can also set up other email accounts such as Yahoo or your work email account via Gmail.

IMPORTANT! Your ASUS Phone must be connected to a Wi-Fi or mobile network so you can add an email account or send and receive emails from added accounts. For more details, see [Staying connected](#).

To set up your Google account:

1. From your Home screen, do either of the following to launch Gmail:
 - Tap **Google > Gmail**.
 - Swipe up on your Home screen and tap **Gmail**.
2. Tap **GOT IT** and then **Add an email address**.
3. Select **Google**.
4. Enter your email address. To create a new Google account, tap **Create account**.
5. Follow the next steps to sign in to your Google account.

NOTE: If you want to set up your work account on your ASUS Phone, ask for the email settings from your network administrator.







Google Calendar

Bring your schedule to life and keep track of all your important events or reminders. Events that you create or edit will automatically sync with all Google Calendar versions that you've logged into.



Creating events

To create an event:

1. From the Home screen, do either of the following to launch Calendar:
 - Tap **Google** > **Calendar**.
 - Swipe up on your Home screen and tap **Calendar**.
2. Tap  then tap **Event**.
3. Enter your event name, and select the date and time for the event. You may set the event as an all-day or recurring event.
 - All-day event: From the **All-day** field, move the slider to the right.
 - Recurring event: Tap **More options** > , then select how often you want the event to recur or repeat.
4. To set the time zone, tap **More options** > , then enter the country whose time zone you want displayed.
5. From the **Add location** field, enter the venue or location of the event.
6. Tap , then you may select or set the time or day to get a notification or reminder about the event.
7. From the **Invite people** field, enter the email addresses of your guests to the event.
8. You may also add note or attachment from the **Add note** or **Add attachment** field.
9. Once finished, tap **Save**.


Editing or removing events

To edit or remove an event:

1. From the Home screen, tap **Google** > **Calendar**.
2. Tap the event that you want to edit or delete.
3. To edit the event, tap  and make the necessary changes. To remove the event, tap  > **Delete**, then tap **Delete** to confirm the deletion.



Creating reminders

To create a reminder:

1. From the Home screen, tap **Google > Calendar**.
2. Tap **+** then tap **Reminder**.
3. Enter your reminder name.
4. Set the date and time for the reminder. You may set the reminder as an all-day or recurring reminder.
 - All-day reminder: From the **All day** field, move the slider to the right.
 - Recurring reminder: Tap , then select how often you want the reminder to recur or repeat.
5. Once finished, tap **Save**.

Editing or removing reminders

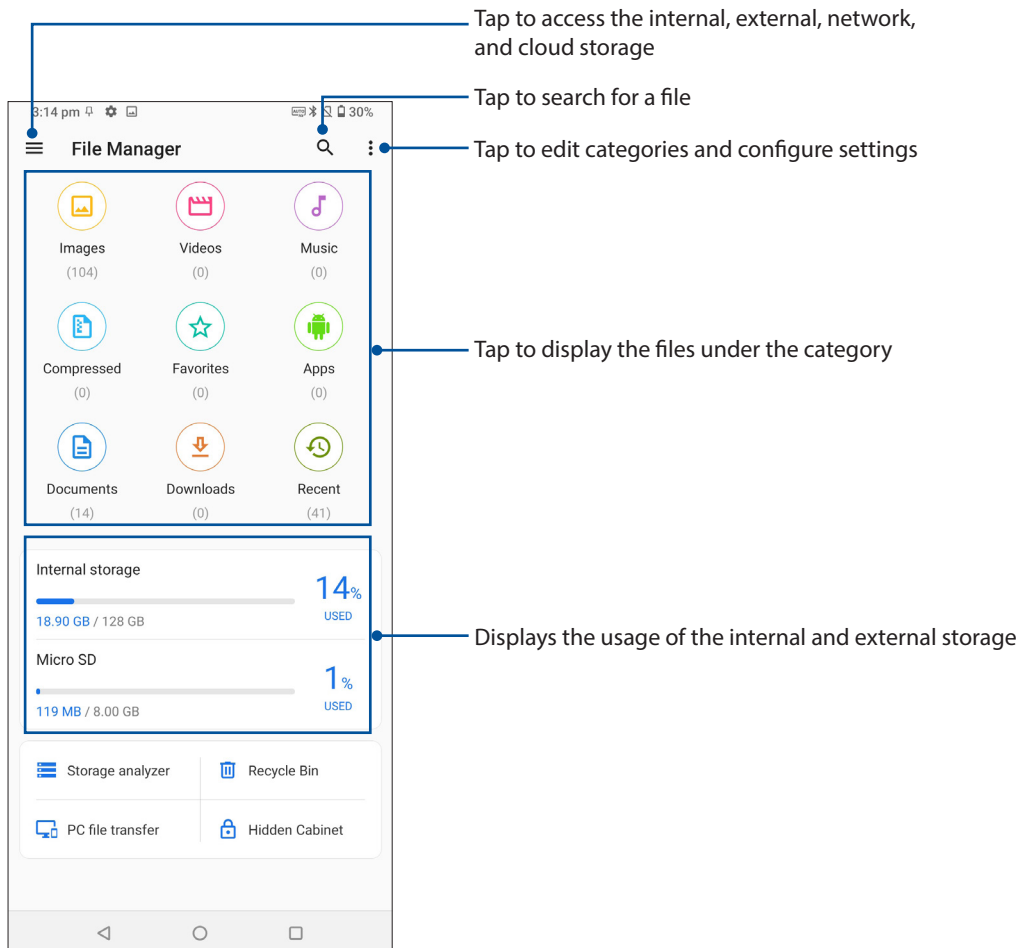
To edit or remove a reminder:

1. Tap **Google > Calendar**.
2. Tap the reminder that you want to edit or delete.
3. To edit the reminder, tap  and make the necessary changes. To remove the reminder, tap  > **Delete**, then tap **Delete** to confirm the deletion.

File Manager

Using File Manager allows you to easily locate and manage your data on the internal storage of your Phone and its connected external storage devices.

To launch File Manager, swipe up on your Home screen then tap **File Manager**.



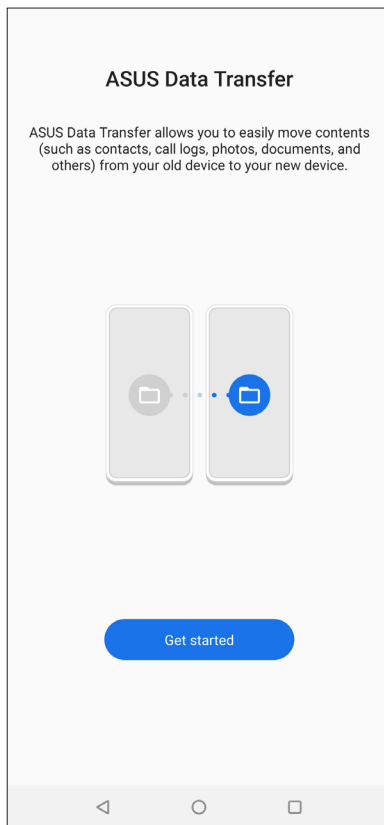
IMPORTANT! Before accessing files saved on the network and cloud storage, ensure that Wi-Fi or mobile network is enabled on your Phone. For details, see [Staying connected](#).

ASUS Data Transfer

Wirelessly transfer your data such as contacts, call logs, or photos from your old mobile device to your ASUS Phone.

To use ASUS Data Transfer:

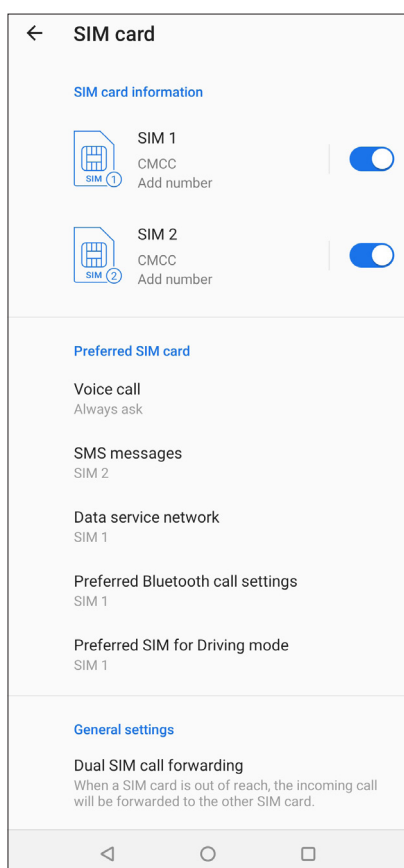
1. Swipe up on your Home screen then tap **ASUS Data Transfer**.
2. Tap **Get Started** then follow the onscreen instructions to complete the data transfer process.



Call in style

Dual SIM feature

The dual SIM feature of your ASUS Phone lets you manage the settings of the installed Nano SIM cards. With this feature, you can enable/disable Nano SIM cards, assign SIM names, or set one as a preferred network.



Renaming your Nano SIM cards

Change the names of your Nano SIM cards on your ASUS Phone so that you can identify them easily.

To change the names of your Nano SIM cards, tap **SIM 1** or **SIM 2** then key in the names for your Nano SIM cards.

NOTE: If your SIMs have different mobile service providers, we recommend you to use the names of these providers for your SIM names. If both SIMs have the same mobile service provider, we recommend you to use the mobile numbers for your SIM names.

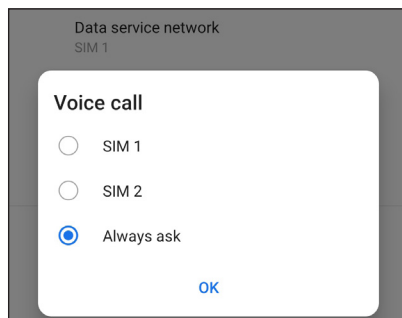
Assigning a preferred SIM card

Assign a SIM card as your preferred SIM for voice calls, SMS messages, and data services.

SIM card for voice calls

When you make a call, your ASUS Phone automatically uses the preferred SIM card to connect the call.

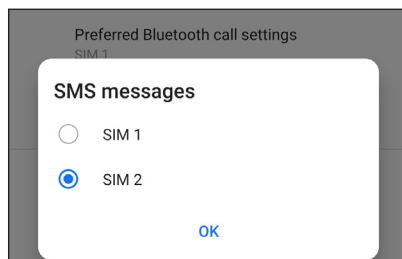
To assign a SIM card for voice calls, tap **Voice call** then tap the SIM that you want to use.



IMPORTANT! You can only use this feature if you make a call from your contacts list.

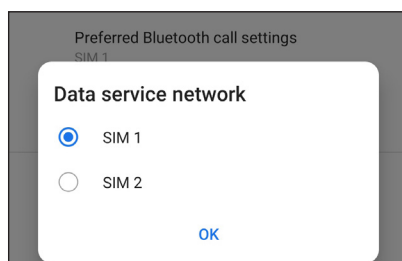
SIM card for SMS messages

To assign a SIM card for SMS messages, tap **SMS messages** then select from **SIM 1** or **SIM 2**.



SIM card for data service

To assign a SIM card for data service, tap **Data service network** then select from **SIM 1** or **SIM 2**.




Making calls

Your ASUS Phone offers you many ways to make a call. Call your friends from your contacts list, smart dial to quickly place a call, or enter a speed-dial number to call your frequently-called contact.

NOTE: Organize your contacts in the Contacts app. For details, see [Managing contacts](#).


Launching the Phone app

From your Home screen, do either of the following to launch the Phone app:

- Tap .
- Swipe up on your Home screen then tap **Phone**.

Dialing a phone number

Use the Phone app to directly dial a phone number.

1. From your Home screen, tap  then tap the number keys.
2. Select from call buttons **SIM 1** or **SIM 2** to dial the number.


NOTE: The labels of the call buttons may vary depending on the setting that you made to your SIM cards. For more details, see [Dual SIM feature](#).

Dialing an extension number

When you need to call an extension number, you can do any of these steps to skip the voice prompts.


Prompting for confirmation of an extension number

You can insert a confirmation prompt for the extension number after dialing the main number.

1. From the Phone app, enter the main number.
2. To insert a confirmation prompt, tap and hold # until a semi-colon (;) appears.
3. Enter the extension number.
4. Select from call buttons **SIM 1** or **SIM 2** to make the call.
5. When prompted, tap **Yes** to confirm the extension number.
6. Tap  to end the call.

Auto-dialing an extension number

You can insert a short or long pause after dialing the main number, then the extension number is dialed automatically.

1. From the Phone app, enter the main number.
2. To insert a pause, tap and hold * until a comma (,) appears.
3. Enter the extension number.
4. Select from call buttons **SIM 1** or **SIM 2** to place the call.
5. Tap  to end the call.

Smart dialing your contacts


As you enter the first few numbers or letters of your contact's name, Smart Dial filters through your contacts list or call logs and provides you with possible matches. You can check if the contact you're trying to reach is on the list of possible matches, then you can quickly place that call.

1. Launch the Phone app then enter the number or name of the contact in the Search field.
2. From the list of possible matches, tap the contact you wish to call. If the contact is not on list, enter the complete number or name of the contact.
3. Select from call buttons **SIM 1** or **SIM 2** to make the call.

NOTE: The labels of the call buttons may vary depending on the setting that you made to your SIM cards. For more details, see also [Dual SIM feature](#).


Calling from Contacts app

Use the Contacts app to make a call from your contacts list.

1. Launch the Contacts app.
2. Tap the contact name then tap the number that you wish to dial.
3. If there are two SIM cards installed, tap the SIM card from which you want to make the call.
4. Tap  to end the call.

Calling your favorite contacts




When you add a contact to your Favorites list, you can quickly call the contact from the Contacts app.

1. Launch the Contacts app.
2. Tap **Groups** > **Favorites** to display your Favorites list, then tap your favorite contact whom you want to call.
3. Tap  to end the call.

Receiving calls

The touch screen of your ASUS Phone lights up when there is an incoming call. The display of the incoming call also varies, depending on the status of your ASUS Phone.

Answering calls



Slide  to  to answer or to  to reject the call.


Managing your call logs

From your call logs, you can call back your missed calls, save calls to your contacts list, or redial your recently-called number or contact.

Saving calls to Contacts


You can add a call/number from your call logs to your contacts list.

1. From the Phone app, tap **Recents** to display your call logs.
2. Tap  beside the number that you want to add to your contacts list.
3. Tap  at the upper right corner of your screen, and then tap **Add to contacts**.
4. Tap **Create new contact** to add a new entry to your contacts list.

Tap **Add to an existing contact**, select a contact, choose whether to overwrite the contact's number with this new one or add a new entry, then tap .

Redialing your last-called number

To redial your last-called number:

1. From the Phone app, tap **Recents** to display your call logs.
2. Tap your last-called number to redial the number.
3. If there are two SIM cards installed, tap the SIM card from which you want to redial the number.
4. Tap  to end the call.

Other call options

During an active call, tap any of the possible call options for when a call is in progress.



Contacts

Opens the Contacts app.



Conference call

When you have subscribed to a conference call service with your mobile service provider, this icon allows you to add a contact or contacts in an active call.

NOTE: The number of participants in the conference call depend on your conference call subscription. You can inquire from your mobile service provider about this service.



Record

Records an active call.

IMPORTANT! Before recording an active call, it is dictated by most local laws to ask permission from the other person or persons on the other line.

NOTE: For more details, refer to the section [Recording calls](#).



Speakerphone

Turns the speakerphone on or off.



Microphone

Turns the microphone for the active call on or off. When the microphone is off or in mute mode, you can hear the caller but the caller can't hear you.



Hold call

Puts an active call on hold.




Keypad

Brings up the keypad.

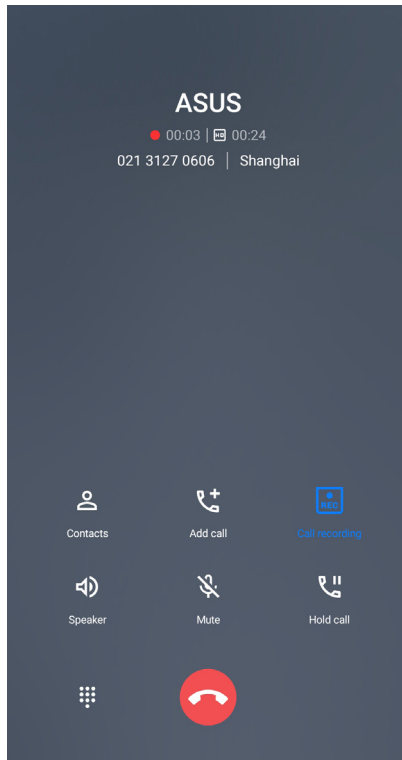
Recording calls

Your ASUS Phone allows you to record a conversation for future reference or information.

1. Call a contact or dial a number.

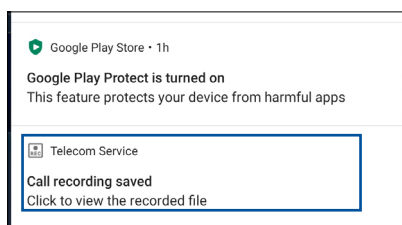
2. Tap  to record the call.

IMPORTANT! Before recording a call, ensure that you ask for permission from the other party or parties.



3. To stop recording, tap . This  icon appears on the system notification bar.

4. Swipe down from the top of the screen, and then tap **Call recording saved** notification to view the recorded conversation.




Managing contacts

Organize your contacts and easily stay in touch with them via calls, SMS messages, emails, or social networks. Group your contacts as Favorites to quickly get in touch with them, or group them as VIPs to get notified about any upcoming events, missed calls, or unread messages.

You can also sync your contacts with your email or social network accounts, link contacts' info for easy access in one place, or filter the contacts you want to keep in touch with.

To launch the Contacts app, swipe up on your Home screen then tap **Contacts**.

Contacts Settings


Select how you would want to display your contacts from the Contacts settings. Such display options include displaying only those contacts with phones, sorting list by first/last name, or viewing contact names as first/last names first. To set up your Contacts settings, tap  > **Settings** from the Contacts app.

Setting up your profile

Make your ASUS Phone truly your own and set up your profile info.


1. Launch the Contacts app then tap **Set up my profile** or **Me**.

NOTE: Me appears when you've set up your Google account on your ASUS Phone.

2. Fill in your info such as mobile or home number. To add other info, tap **Add another field**.
3. When you've completed your info, tap .


Adding contacts

Add contacts to your device, corporate, Google, or other email accounts and fill in more important contact information such as contact numbers, email addresses, special events for VIPs, and more.

1. Launch the Contacts app then tap  .
2. Select **Device**.


NOTES:

- You can also save the contact to your SIM card or an email account.
 - If you don't have an email account, tap **Add account** then create one.
-

3. Fill in the necessary information such as name, mobile or home number, and email address.
4. If you want to add other contact information, tap **Add another field**.
5. When you've completed the info, tap  .

Adding an extension number to a contact number

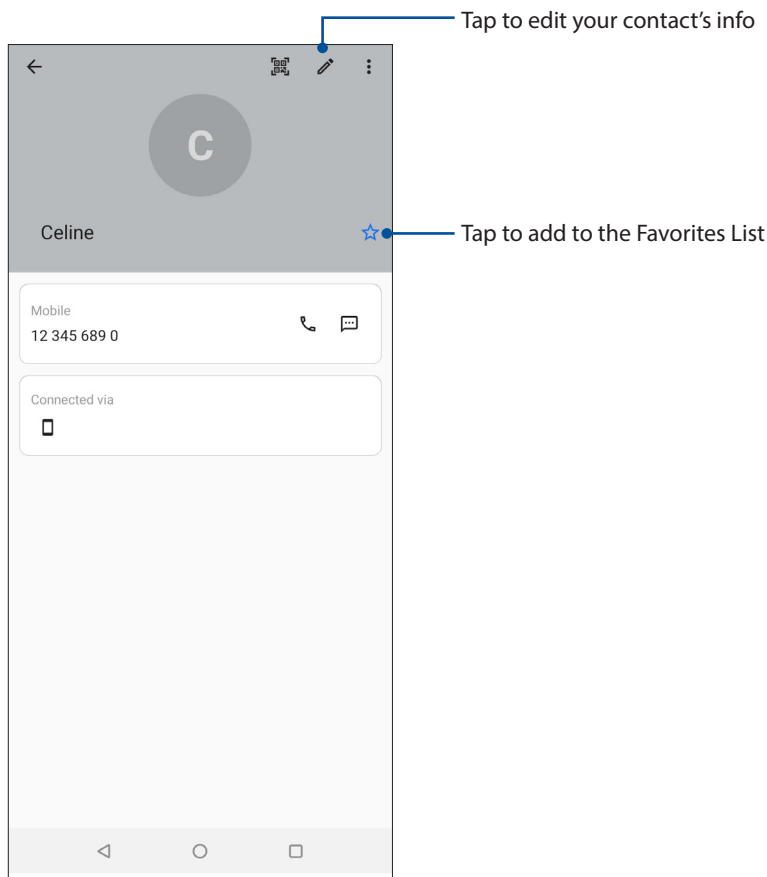
You can add a contact's extension number to skip the voice prompts when making a call.

1. In the contact's information screen, enter the contact's main number and extension number in either of these two ways:
 - Insert a comma (,) after the main number, then enter the contact's extension number. There'll be a short pause before the extension number is dialed automatically. To extend the pause, tap **Pause** to insert another comma.
 - Insert a semi-colon (;) after the main number, then enter the contact's extension number. When dialing the contact number, you'll be prompted to confirm the extension number. Tap **Yes** on the confirmation message.
2. When you've completed the info, tap  .

Customizing your contact's profile


Edit your contact's info, add a photo, set a ringtone, or take a photo as a cover for your contact's profile.

1. Launch the Contacts app then select the contact whose info or profile you want to edit or customize.
2. Make the changes from the contact's profile page.



Marking your favorite contacts

Set your frequently-called contacts as your favorites to be able to call them quickly from the Phone app.

1. Swipe up on your Home screen then tap **Contacts**.
2. Select the contact that you want to mark as a favorite.
3. Tap . The contact is added to your Favorites List in the Contacts app.





NOTES:

- To view your Favorites list, swipe up on your Home screen then tap **Contacts > Groups > Favorites**.
 - For more details, refer to the section [Calling your favorite contacts](#).
-

Managing your block list


Blocking numbers

Create your list of blocked numbers to avoid receiving any unwanted calls or messages. Your blocked calls and messages will be saved to the Block List archive.

1. Swipe up on your Home screen then tap **Phone** then tap  > **Settings** > **Call blocking & block list** > **Block List**.
2. Tap , then do either of the following:
 - To block a contact, tap **Choose from contacts**, then select the contact you want to block from your contacts list. When done, tap .
 - To block a number from the recent call logs, tap **Choose from recent call logs**, then select the contact you want to block from your contacts list. When done, tap .
 - To block a number, tap **Enter a number** then enter the number that you want to block. When done, tap **OK**.
 - To block a SIP number, tap **Enter a SIP number** then enter the number that you want to block. When done, tap **OK**.

Unblocking numbers

You may remove a blocked number from your list and receive calls or messages from the number again.

1. Swipe up on your Home screen then tap **Phone** then tap  > **Settings** > **Call blocking & block list** > **Block List**.
2. Tap the contact or number that you want to unblock then tap **Remove from block list**. When done, tap **OK**.


Social networking with your contacts

Integrating the social network accounts of your contacts makes it easier for you to view their profiles, news, and social feeds. Stay updated with the activities of your contacts in real time.

IMPORTANT! Before you can integrate social network accounts of your contacts, you need to log in to your social network account and sync its settings.

Syncing your social network account

Sync your social network account to add the social network accounts of your contacts to your ASUS Phone.



1. Launch the Settings screen by doing either of the following:
 - Launch Quick Settings then tap .
 - Swipe up on your Home screen then tap **Settings**.
2. From the **Settings** screen, tap your social network account under **Accounts** section.
3. Slide on **Automatically sync app data** to sync the social network accounts of your contacts.
4. Launch the Contacts app to view your contacts list. Tap the contact, you will see which social network the contact is from.

Send messages and more


Messages

Messages, an intuitive and delightful app, lets you send/receive SMS/MMS messages, as well as send group texts, photos, or audio messages. You can add emojis or stickers to your messages, share your location, archive your messages, and easily block SMS senders. You can also take photos or record videos and easily share these files.

Sending messages

1. From the Home screen, tap .
2. Tap **Start chat**, then select the contact whom you want to send a message to.
3. Select the SIM account where you're going to send your message from.
4. Start composing your message in the message field.
5. When you're done, tap  to send your message.

Replying to messages

1. Tap your message alert from your Home screen or Lock screen.
2. Select the SIM account where you're going to send your reply from.
3. Start composing your reply in the message field.
4. When you're done, tap  to send your reply.

Using a headset

Have the freedom to do other things while you're in a call or enjoy listening to your favorite music, using a headset.

Connecting the audio jack

Connect the 3.5mm audio jack of the headset to your device using a USB Type-C to 3.5mm headphone jack adapter.



WARNING! Listening at a high volume for long periods can damage your hearing.

NOTES:

- The headset and the USB Type-C to 3.5mm headphone jack adapter are purchased separately.
 - We highly recommend to use only compatible headsets.
 - Unplugging the audio jack while listening to music, automatically pauses the music played.
 - Unplugging the audio jack while watching a video, automatically pauses the video playback.
-

YT Music

With YT Music, you can stream your favorite music, create playlists, or listen to the radio. You can also subscribe to YT Music for unlimited and ad-free access to millions of music files that you can add to your own music library.

Setting up your YT Music

Sign in to your Google or Gmail account to be able to use YT Music. Once you've signed in to your account, all music files on your ASUS Phone, including the uploaded or purchased ones from YT Music, are added to your library.

To set up your YT Music:

1. From the Home screen, **Google > YT Music**.
2. Tap **SIGN IN > Add account**.
3. Follow the next instructions to sign in to your account.

NOTE: YT Music subscription is only available in some countries or region.

Your precious moments

6

Capture moments

Launching the Camera app

Capture images and record videos using your ASUS Phone's Camera app. Refer to any of the steps below to open the Camera app.

From the lock screen

Swipe  up to launch the camera app.

From the home screen

Tap .

Camera home screen

Your ASUS Phone's camera is equipped with auto-scene detection and auto-image stabilizer features. It also features a video stabilization function that helps prevent shakiness while video recording.

Tap the icons to start using your camera and explore the image and video features of your ASUS Phone.

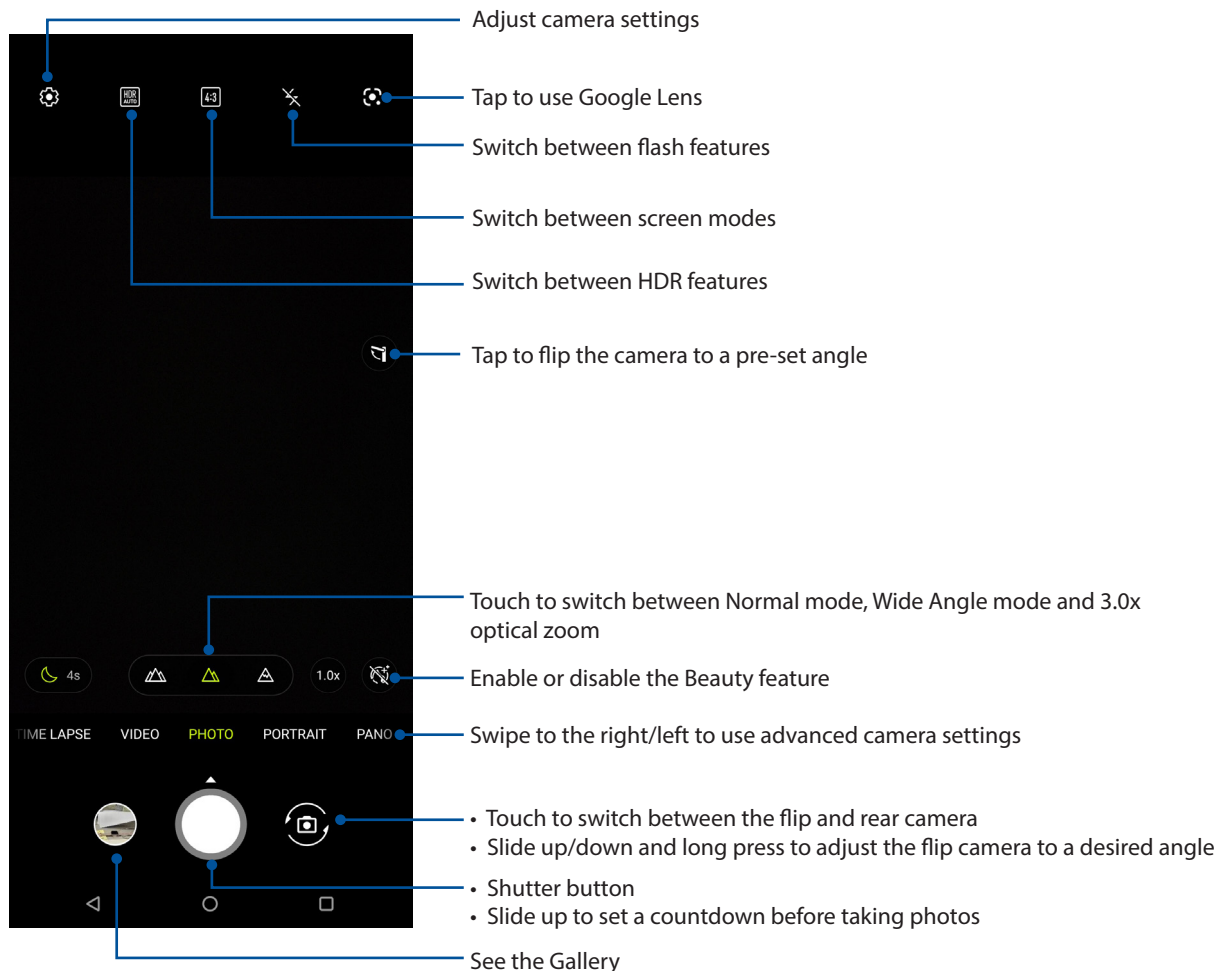



Photo Locations

To enable the location tagging feature, refer to the following steps:

1. Turn on the location access from **Settings > Location** and slide **Use location** to on.
2. Ensure that you have shared your location to Google Maps.
3. From the Camera app's home screen, tap  and activate **Location services** before you take the photo.

Advanced camera features

Explore new ways of capturing images or videos and make captured extra special moments using the advanced camera features of your ASUS Phone.

IMPORTANT! Apply the settings first before taking images. Available features may vary per model.

Time lapse

The time lapse video feature of your ASUS Phone allows you to capture stills for automatic time lapse playback. In effect, events seem to move in a fast-forward manner though they actually occurred and were recorded between long intervals.

Recording Time lapse videos

1. From the Camera app's home screen, swipe right to **Time lapse**.
2. Tap the shutter button then select the time lapse interval.
3. Tap the shutter button to start taking Time lapse videos.

Slow motion

The slow motion video feature allows you to record videos for slow-motion playback.

Recording slow motion videos

1. From the Camera app's home screen, swipe right to **SLO-MO**.
2. Tap the shutter button to start taking Slow motion videos.

Night

Take well-lit photos even on night time or on low-light situations using the Night feature of your ASUS Phone.

NOTE: Keep your hands steady while before and while the ASUS Phone is capturing the image to prevent blurry results.

Capturing Night photos

1. From the Camera app's home screen, swipe left to **MORE > NIGHT**.
2. Tap the shutter button to start capturing Night photos.

Panorama

Capture images from various angles using Panorama. Images captured from a wide angle perspective are automatically stitched together using this feature.

Capturing panoramic photos

1. From the Camera app's home screen, swipe left to **PANO**.
2. Hold the phone steady and tap the shutter button to start auto panorama.

Using the Gallery

View images and play videos on your ASUS Phone using the Gallery app.

This app also allows you to edit, share, or delete image and video files stored in your ASUS Phone. From Gallery, you can display images in a slideshow or tap to view the selected image or video file.

To launch Gallery, Swipe up on your Home screen and tap **Gallery**.

Viewing the photo location

Enable the location access on your ASUS Phone, and get the location details on your photos. Your photos' location details include the area where the photos are taken, as well a map of the location via Google Map or Baidu (in China only).

To view the details of a photo:




1. Turn on the location access from **Settings > Location** and slide **Use location** to on.
2. Ensure that you have shared your location to Google Map or Baidu.
3. Launch the Gallery app, and select the photo whose photo details you want to view.
4. Tap the photo then tap **Details**.

Editing images

The Gallery also features its own image editing tools that you can use to enhance images saved on your ASUS Phone.

1. Do either of the following:
 - From the Gallery > Photos screen, tap the image you want to edit.
 - From the Gallery > Albums screen, tap the folder where the files are located. After opening the folder, tap the image you want to edit.
2. Tap **Edit** to open the image editing toolbar.
3. Tap any of the icons on the editing toolbar to apply changes to the image.

Sharing files from the Gallery

1. Do either of the following:
 - From the Gallery > Photos screen, tap  > **Select** to activate file selection.
 - From the Gallery > Albums screen, tap the folder where the files you want to share are located. After opening the folder, tap  > **Select** to activate file selection.
2. Tap the files you want to share. A check mark appears on top of the image you select.
3. Tap  then select from the list where you want to share the images.

Deleting files from the Gallery

1. Do either of the following:

- From the Gallery > Photos screen, tap  > **Select** to activate file selection.
- From the Gallery > Albums screen, tap the folder where the files you want to delete are located. After opening the folder, tap  > **Select** to activate file selection.

2. Tap the files you want to delete. A check mark appears on top of the image you select.

3. Tap .


Staying connected

7

Mobile network

When there's no available Wi-Fi network that you can connect to, you can enable your mobile network's data access for Internet connection.

Enabling the mobile network

1. Do either of the following to launch the Settings screen:
 - Launch Quick Settings then tap .
 - Swipe up on your Home screen then tap **Settings**.
2. Tap **Network & internet** > **Mobile network**.
3. Slide **Mobile data** to **ON**, and configure the other mobile network settings, if necessary.


NOTES:

- If you access the Internet via your mobile network, additional charges will be incurred depending on your data plan.
 - For more details on your mobile network charges/fees and settings, contact your mobile service provider.
-

Wi-Fi

The Wi-Fi technology of your ASUS Phone gets you connected to the wireless world. Update your social media accounts, browse the Internet, or exchange data and messages wirelessly from your ASUS Phone.

Enabling Wi-Fi

1. Launch the Settings screen by doing either of the following:
 - Launch Quick Settings then tap  > **Network & internet**.
 - Swipe up on your Home screen then tap **Settings** > **Network & internet**.
2. Slide the Wi-Fi switch to the right to turn on the Wi-Fi.

NOTE: You can also enable the Wi-Fi from Quick Settings screen. Refer to section [Quick Settings](#) on how to launch Quick Settings screen.

Connecting to a Wi-Fi network


1. On the Settings screen, tap **Network & internet** > **Wi-Fi** to display all detected Wi-Fi networks.
2. Tap a network name to connect to it. For a secured network, you may be prompted to key in a password or other security credentials.

NOTES:

- Your ASUS Phone automatically reconnects to the network that you connected with previously.
 - Turn off the Wi-Fi feature when you're not using it to help save battery power.
-

Disabling Wi-Fi

To disable Wi-Fi:


1. Do either of the following:
 - Launch Quick Settings then tap  > **Network & internet**.
 - Swipe up on your Home screen then tap **Settings** > **Network & internet**.
2. Slide the Wi-Fi switch to the left to turn off the Wi-Fi.

NOTE: You can also disable the Wi-Fi from Quick Settings screen. See [Quick Settings](#) on how to launch Quick Settings screen.

Bluetooth®

Use the Bluetooth feature of your ASUS Phone to send or receive files and stream multimedia files with other smart devices over short distances. With Bluetooth, you can share your media files with your friends' smart devices, send data for print with a Bluetooth printer, or play music files with a Bluetooth speaker.

Enabling Bluetooth®

1. Do either of the following:
 - Launch Quick Settings then tap  > **Connected devices**.
 - Swipe up on your Home screen then tap **Settings** > **Connected devices**.
2. Tap **Pair new device** or **Connection preferences**.
3. Slide the Bluetooth switch to the right to turn on the Bluetooth.

NOTE: You can also enable the Bluetooth from Quick Settings screen. See [Quick Settings](#) on how to launch Quick Settings screen.


Pairing your ASUS Phone to a Bluetooth® device

Before using the Bluetooth feature of your ASUS Phone in full scale, you have to pair it first with the Bluetooth device. The ASUS Phone automatically stores the pairing connection of the Bluetooth device.

1. On the Settings screen, tap **Connected devices** > **Connection preferences** > **Bluetooth** to display all available devices.


IMPORTANT!

- If the device that you want to pair is not in the list, ensure to enable its Bluetooth feature make it discoverable.
 - See the user guide that came with your device to learn how to enable its Bluetooth and set it to discoverable.
-

2. Tap  > **Refresh** to scan for more Bluetooth devices.
3. In the list of available devices, tap the Bluetooth device that you want to pair with.
4. Ensure that the same passkey show on both devices, then tap **Pair**.

NOTE: Turn off the Bluetooth feature when you're not using it to help save battery power.

Unpairing your ASUS Phone from the Bluetooth® device

1. On the Settings screen, tap **Connected devices** > **Connection preferences** > **Bluetooth** to display all available and paired devices.
2. In the list of paired devices, tap  of Bluetooth device that you want to unpair, then tap **FORGET**.

Tethering

When Wi-Fi service is not available, you can use your ASUS Phone as a modem or turn it into a Wi-Fi hotspot to get Internet access on your laptop, tablet, and other mobile devices.

IMPORTANT! Most mobile service providers may require a data plan for you to be able to use the tethering function. Contact your mobile service provider about availing of this data plan.


NOTES:

- Internet access via tethering may be slower than the standard Wi-Fi or mobile connection.
 - Only a limited number of mobile devices can tether to your ASUS Phone for Internet access.
 - Turn off the tethering feature when you're not using it to help save battery power.
-

Wi-Fi Hotspot

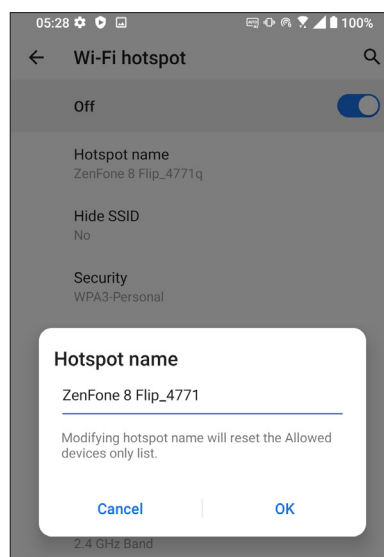
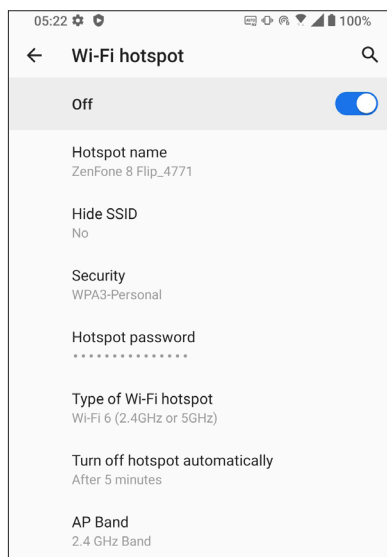
Turn your ASUS Phone into a Wi-Fi Hotspot to share Internet connection with other devices.

1. Do either of the following:

- Launch Quick Settings then tap  > **Network & internet**.
- Swipe up on your Home screen then tap **Settings** > **Network & internet**.

2. Tap **Hotspot & tethering** then slide on **Wi-Fi hotspot**.

3. Tap **Wi-Fi hotspot** > **Hotspot name** to assign a unique SSID or network name, and tap **Hotspot password** to assign a strong 8-character password for your Wi-Fi hotspot. When done, tap **OK**.

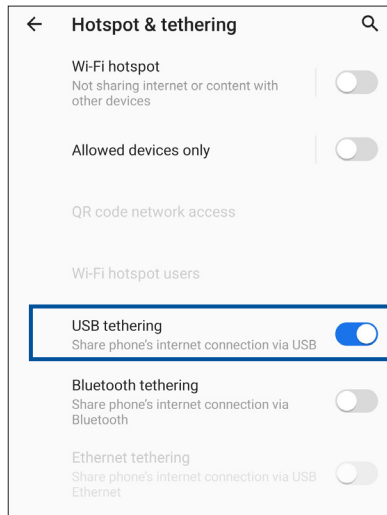


4. Connect other devices to your ASUS Phone's hotspot connection the same way you connect to a Wi-Fi network.

USB Tethering

Enable USB tethering on your ASUS Phone and share its Internet connection with other devices.

1. Connect your ASUS Phone to another device with a USB cable.
2. From the Settings screen, tap **Network & internet** > **Hotspot & tethering**, then slide on **USB tethering** to enable tethering.



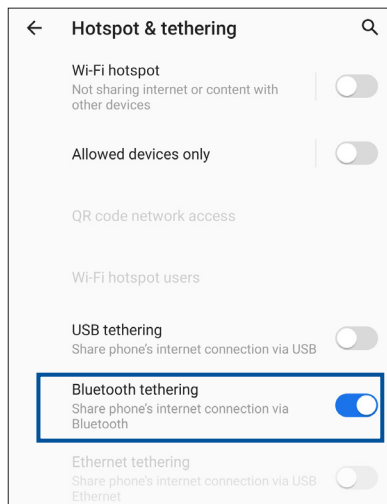
Bluetooth Tethering

Enable Bluetooth tethering on your ASUS Phone to share its Internet connection with other devices.

1. Enable Bluetooth on your ASUS Phone and the other device.
2. Pair both devices.

NOTE: For details, see [Pairing your ASUS Phone to a Bluetooth® device](#).

3. From the Settings screen, tap **Network & internet** > **Hotspot & tethering**, then slide on **Bluetooth tethering**.



Travel and Maps

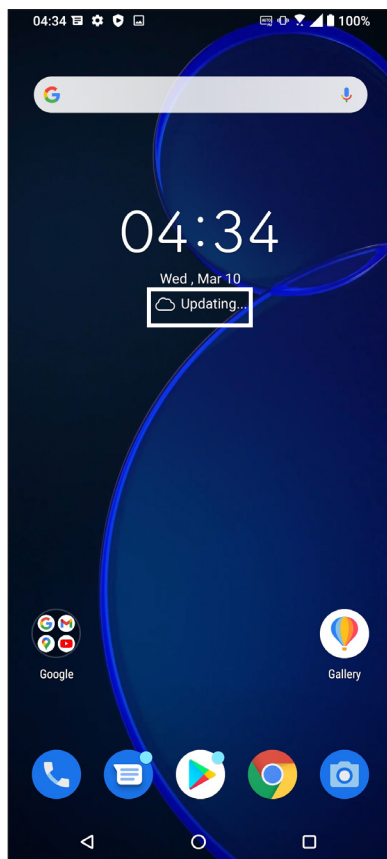
8

Weather

Get real-time weather updates straight from your ASUS Phone using the weather app. Using Weather, you can also check other weather details from around the world.

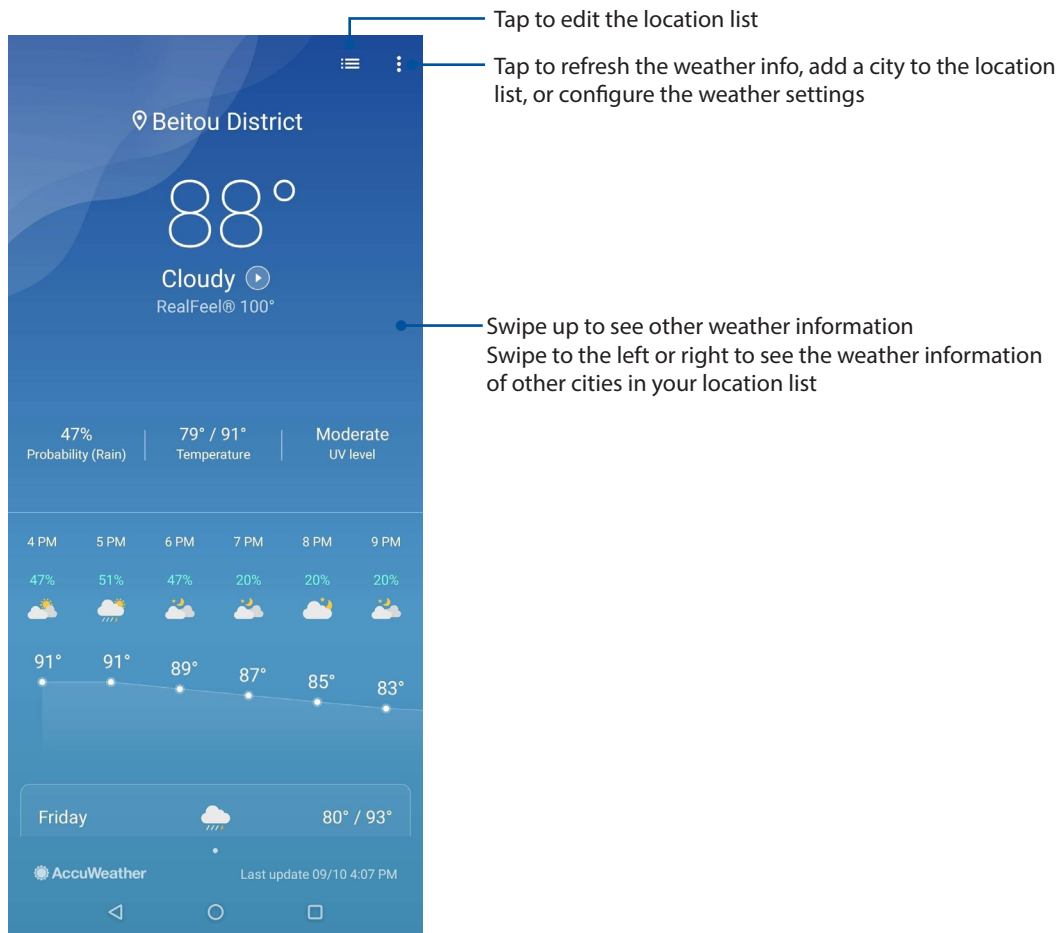
Launching the Weather app

From your Home screen, tap the weather icon to launch the Weather app.



Weather home screen

Set up and get your current location's weather updates as well as other parts of the world.



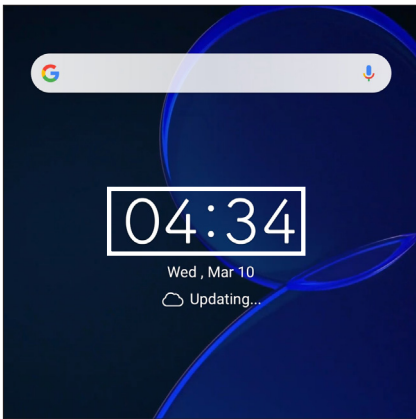
Clock

Customize the time zone settings of your ASUS Phone, set alarms, and use your ASUS Phone as a stop watch using the Clock app.

Launching Clock

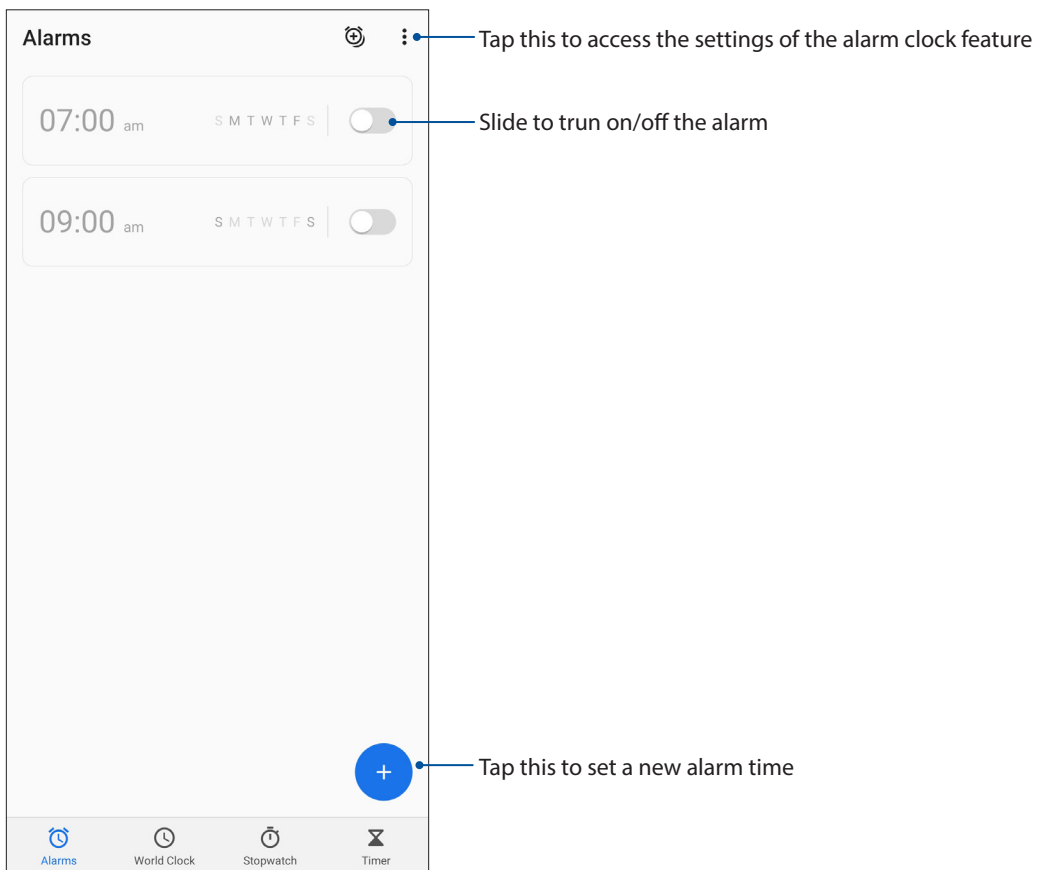
Launch the Clock app using either of the following options:

- Swipe up on your Home screen then tap **Clock**.
- From your ASUS Phone's home screen, tap the digital clock display.



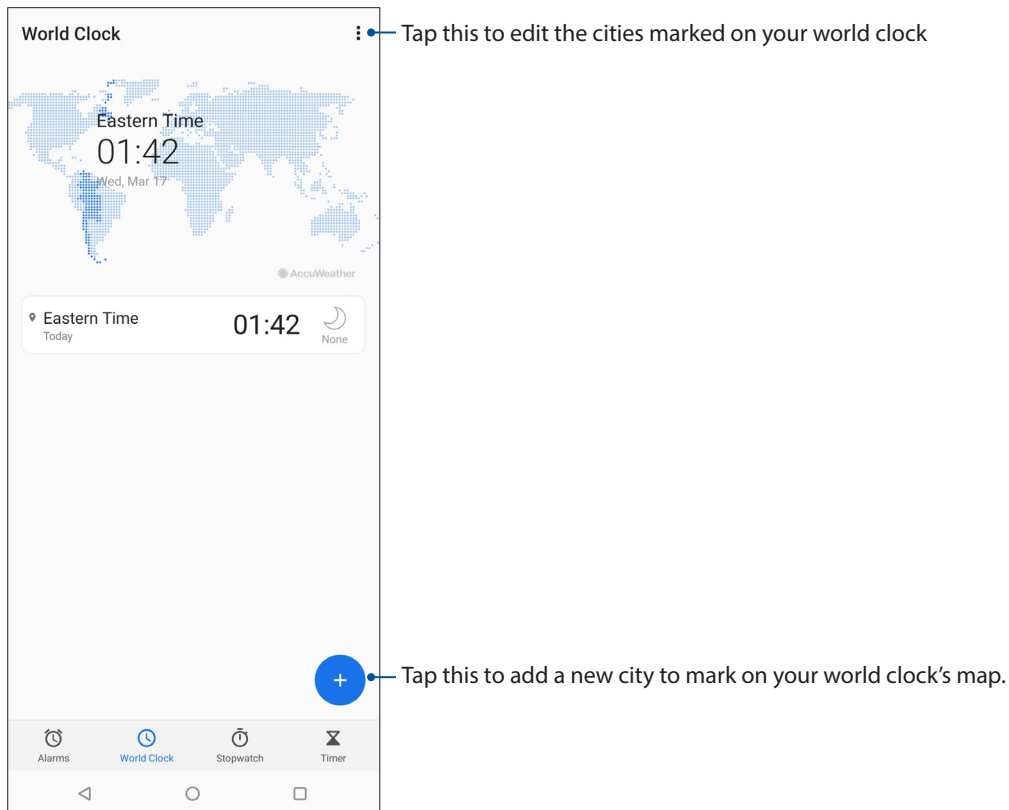
Alarm clock

Tap **Alarms** to access the alarm clock settings of your ASUS Phone.



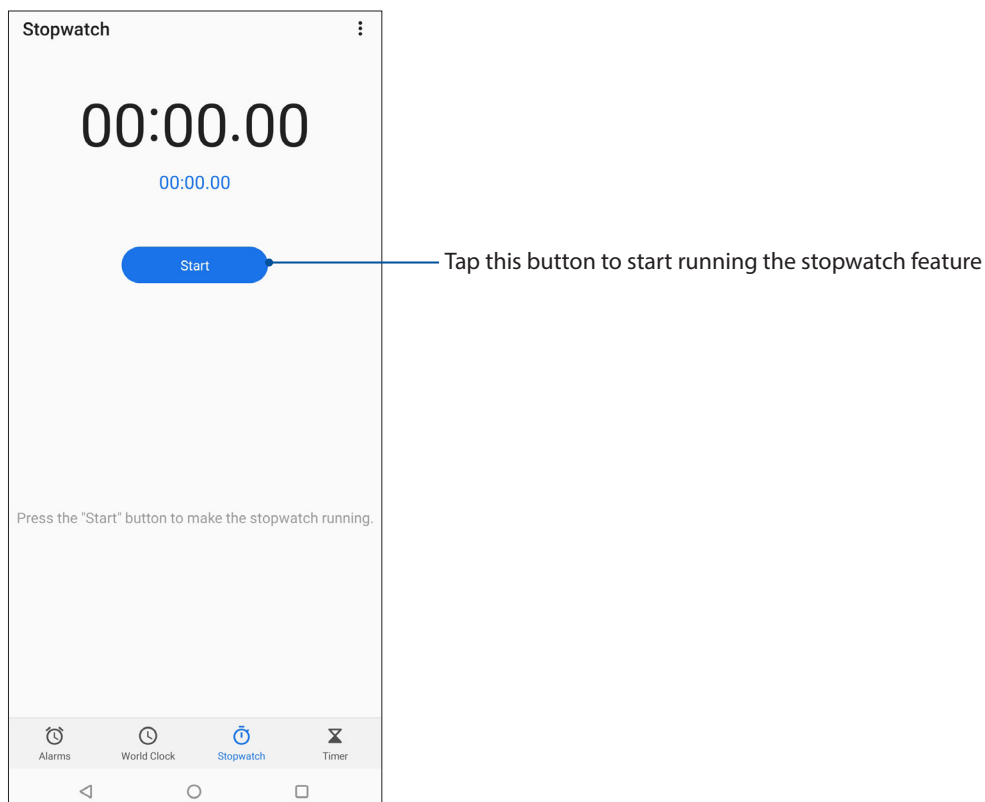
World clock

Tap **World Clock** to access the world clock settings of your ASUS Phone.



Stopwatch

Tap **Stopwatch** to use your ASUS Phone as a stopwatch.

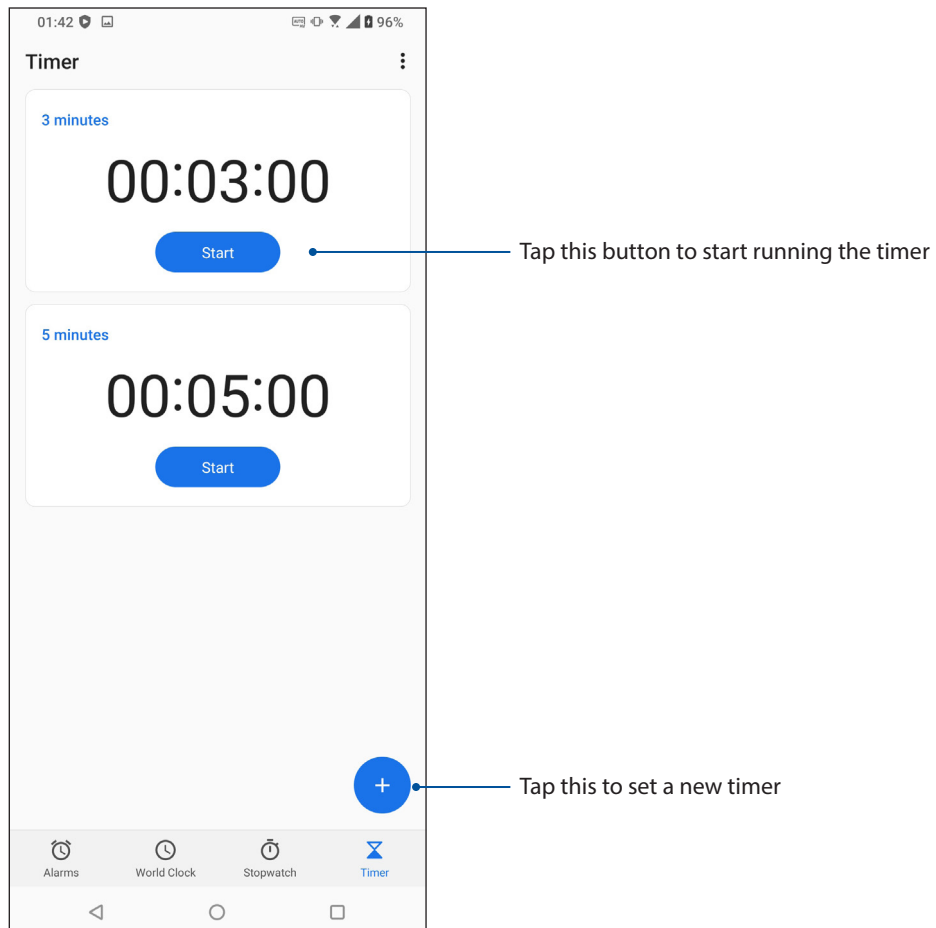


Timer

You may set multiple timer options for your ASUS Phone. To do this, follow the steps below:

Setting the timer

Tap **Timer** to access the timer feature of your ASUS Phone.



Special Zen Tools

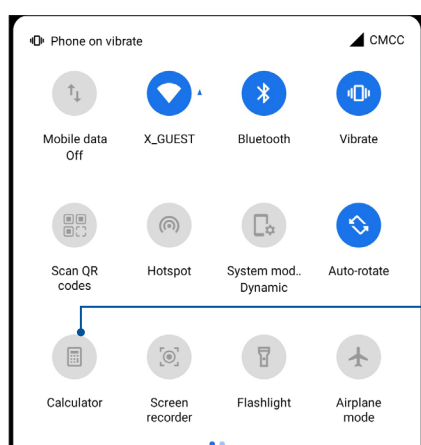
Calculator

Calculate using your ASUS phone by enabling the Calculator app.

Launching Calculator

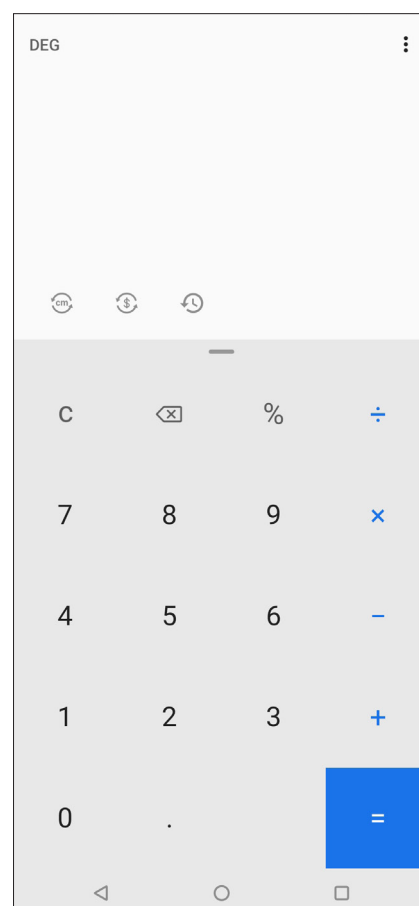
Launch Calculator using either of the following options:

- Swipe up on your Home screen then tap **Calculator**.
- Open the Quick settings panel, the Calculator icon is there visibly on the list. Tap it to get started with your computations.



Tap this to enable the calculator

Calculator screen

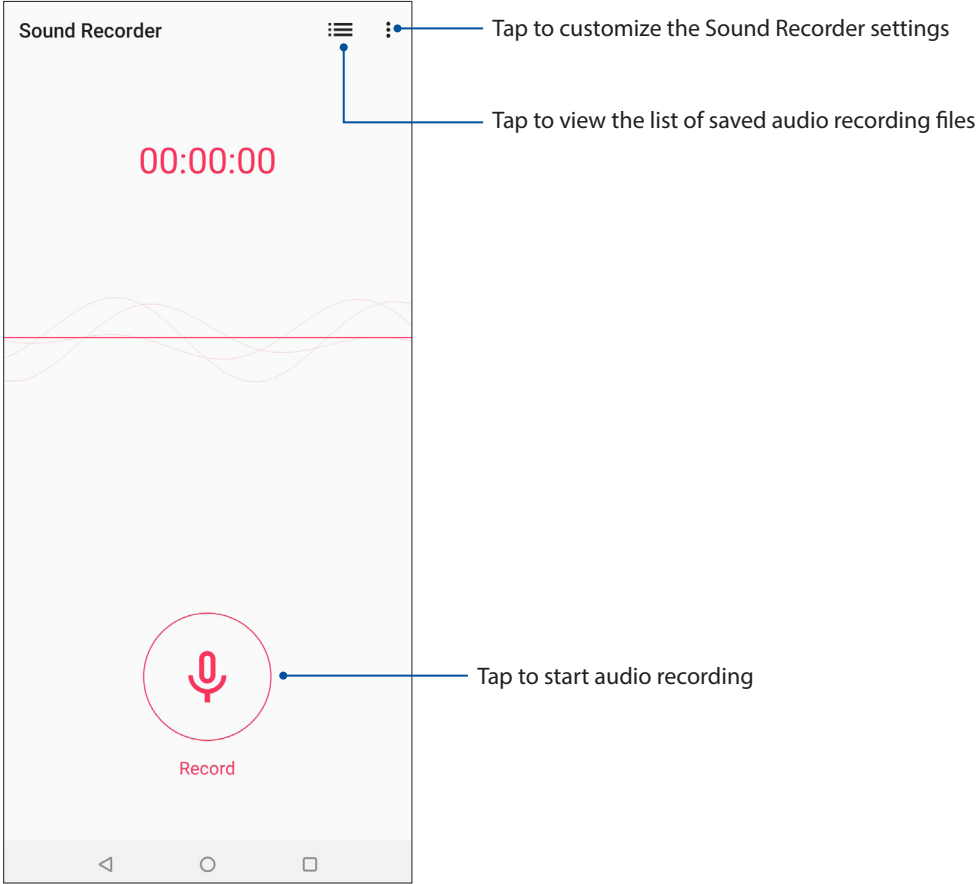


Sound Recorder

Record audio files using your ASUS Phone by enabling the Sound Recorder app.

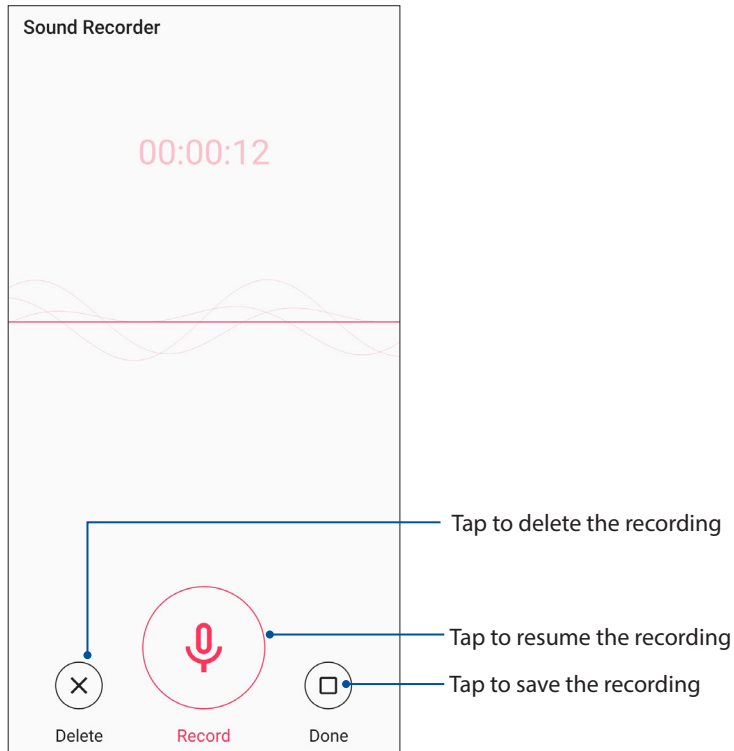
Launching Sound Recorder

To launch Sound Recorder, swipe up on your Home screen then tap **Sound Recorder**.



Pausing a recording

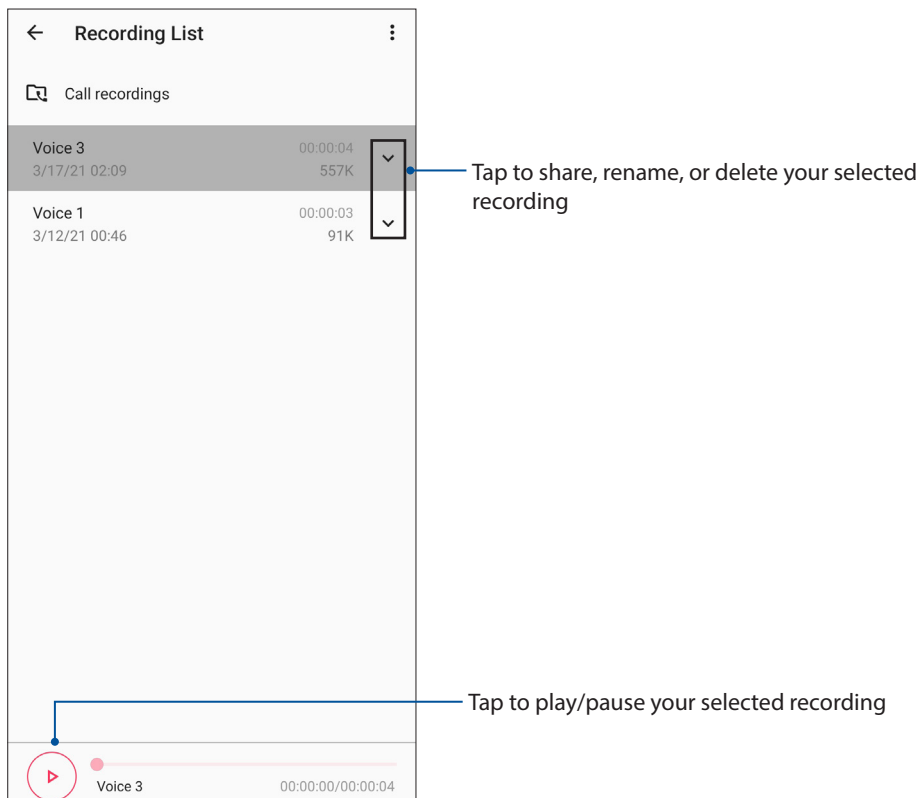
During a paused recording, you can choose to resume, delete, or save the recording.



Recording List

From the Recording List, you can play, rename, share, or delete a saved audio recording file.

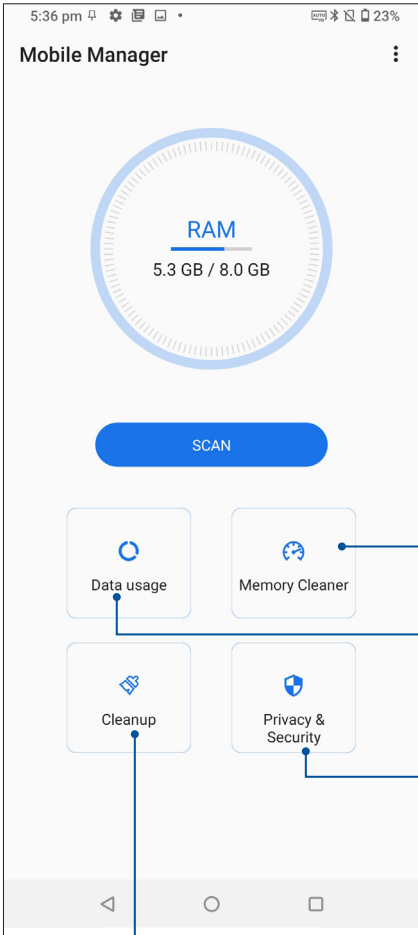
To view your recording list, tap  from the Sound Recorder main screen.



Mobile Manager

Mobile Manager provides an integrated interface for several apps that are designed to optimize device performance, manage the phone power, and storage usage.

To launch Mobile Manager, swipe up on your Home screen then tap **Settings > Advanced > Mobile Manager**.



Close unused processes that are running in the background to retrieve more system memory

Tap this to view the mobile data usage, set a monthly limit for mobile data use, and control apps to access the Internet only over Wi-Fi, only over mobile network, neither or both


Tap this to run privacy and security scan and prevent apps from using dangerous permissions and starting automatically

Tap this to uninstall the selected unused apps to free up some storage

Keeping your device up-to-date

Keep your ASUS Phone in the loop of Android system updates and upgraded apps and features.

Updating your system

1. Swipe up on your Home screen then tap **Settings**.
2. On the Settings screen, slide down to display other items then tap **System > System update** to check for system updates.
3. Tap  on the System updates screen to set up automatic download of system updates.

NOTE: You can preview the last time your ASUS Phone's system was updated at the Last update check of the System update window.

Storage

You can store data, apps, or files on your ASUS Phone (internal storage), on an external storage, or on an online storage. You need an internet connection to transfer or download your files on an online storage. Use the bundled USB cable to copy files to or from the computer to your ASUS Phone.

Backup

Back up data, Wi-Fi passwords, and other settings to Google servers using your ASUS Phone.

1. Swipe up on your Home screen then tap **Settings > System > Backup**.
2. From the Backup window, you can:
 - **Back up to Google Drive:** This feature backs up your data, Wi-Fi passwords, and other settings to Google Drive when enabled.

Reset

Reset network settings and app preferences, or reset factory defaults.

1. Swipe up on your Home screen then tap **Settings > System > Reset options**.
2. From the Reset window, you can:

- **Reset Wi-Fi, mobile & Bluetooth:** This feature restores Wi-Fi passwords, and other network settings.
- **Erase all data (factory reset):** Erases all data on phone.

Securing your ASUS Phone

Use the security features of your ASUS Phone to prevent unauthorized calls or access of information.

Unlocking your screen

When the screen is locked, you can open it with the security unlocking options that the ASUS Phone offers you.

1. Swipe up on your Home screen then tap **Settings** > **Security & lock screen**.
2. Tap **Screen lock** then select an option to unlock your ASUS Phone.

NOTES:

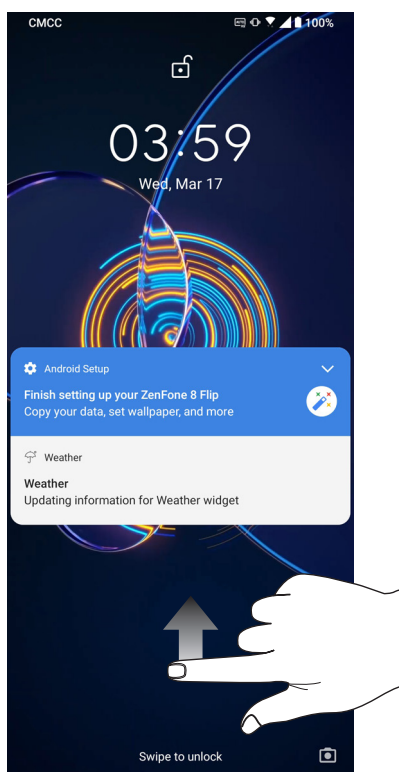
- Refer to section **Unlock screen options** for more information.
 - To deactivate the unlock screen option that you set, tap **None** on Choose screen lock screen.
-

Unlock screen options

Choose from these options to lock your ASUS Phone.

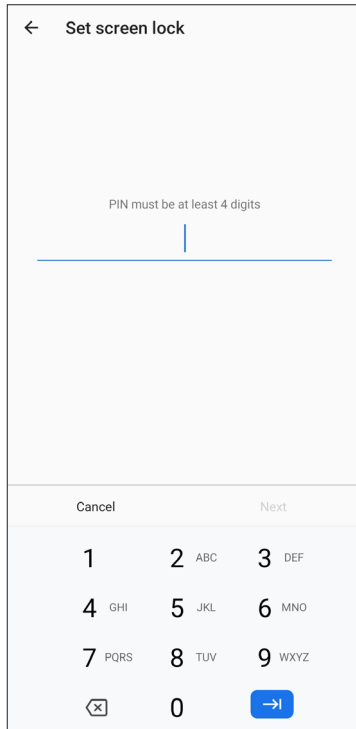
Swipe

Swipe up to unlock your ASUS Phone.



PIN

Key in at least four numbers to set a PIN.

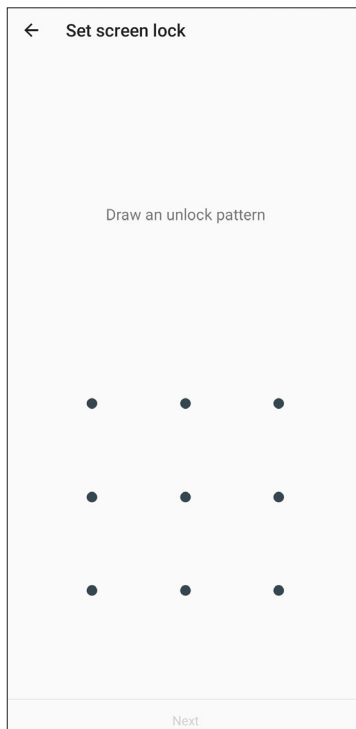


The screenshot shows the 'Set screen lock' screen. At the top left is a back arrow and the text 'Set screen lock'. In the center, it says 'PIN must be at least 4 digits' above a horizontal line with a vertical cursor. At the bottom, there are 'Cancel' and 'Next' buttons. Below these is a numeric keypad with digits 1-9, 0, a backspace icon, and a blue arrow icon.

IMPORTANT! Ensure to remember the PIN that you created to unlock your device.

Pattern

Slide your finger on the dots and create a pattern.

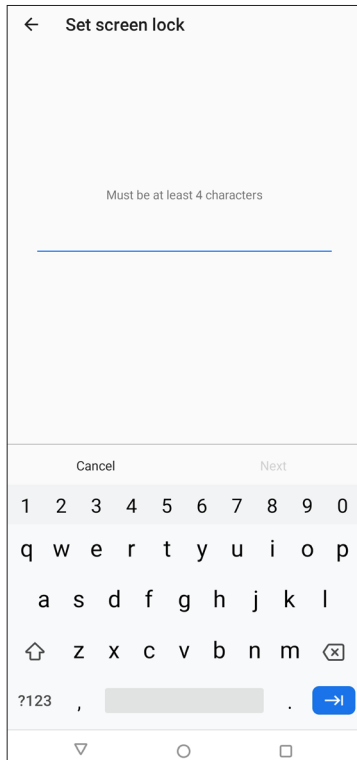


The screenshot shows the 'Set screen lock' screen. At the top left is a back arrow and the text 'Set screen lock'. In the center, it says 'Draw an unlock pattern' above a 3x3 grid of nine dots. At the bottom, there is a 'Next' button.

IMPORTANT! You can create a pattern with a minimum of four dots. Ensure to remember the pattern that you created to unlock your device.

Password

Key in at least four characters to create a password.



IMPORTANT! Ensure to remember the password that you created to unlock your device.

Setting your ASUS Phone identity

Know your ASUS Phone's identity such as serial number, IMEI (International Mobile Equipment Identity) number, or model number.

This is important, as when you may lose your ASUS Phone, you can contact your mobile carrier and provide the information to blacklist the unauthorized use of your ASUS Phone.

To display your ASUS Phone's identity:

1. Swipe up on your Home screen then tap **Settings**.
2. On the Settings screen, slide down to display other items then tap **System > About phone**. The About phone screen displays the device name, status, emergency information, legal information, operating system version, hardware, and software information of your ASUS Phone.
3. To see the serial number, SIM status, and IMEI of your ASUS Phone, tap **Status**.

Appendix

Safety information

CAUTION! Use of controls or adjustments or performance of procedures other than those specified herein may result in hazardous radiation exposure.

ASUS Phone care

- Use your ASUS Phone in an environment with ambient temperatures between 0 °C (32 °F) and 35 °C (95 °F).

The battery

WARNING: Disassembling the battery by yourself will void its warranty and may cause serious harm.

Your ASUS Phone is equipped with a high performance non-detachable Li-polymer battery. Observe the maintenance guidelines for a longer battery life.

- Do not remove the non-detachable Li-polymer battery as this will void the warranty.
- Avoid charging in extremely high or low temperature. The battery performs optimally in an ambient temperature of +5 °C to +35 °C.
- Do not remove and replace the battery with a non-approved battery.
- Use only ASUS battery. Using a different battery may cause physical harm/injury and may damage your device.
- Do not remove and soak the battery in water or any other liquid.
- Never try to open the battery as it contains substances that might be harmful if swallowed or allowed to come into contact with unprotected skin.
- Do not remove and short-circuit the battery, as it may overheat and cause a fire. Keep it away from jewelry or metal objects.
- Do not remove and dispose of the battery in fire. It could explode and release harmful substances into the environment.
- Do not remove and dispose of the battery with your regular household waste. Take it to a hazardous material collection point.
- Do not touch the battery terminals.

- To avoid fire or burns, do not disassemble, bend, crush, or puncture the battery.

NOTES:

- Risk of explosion if battery is replaced by an incorrect type.
 - Dispose of used battery according to the instructions.
-

The charger

- Use only the charger supplied with your ASUS Phone.
- Never pull the charger cord to disconnect it from the power socket. Pull the charger itself.

Caution

Your ASUS Phone is a high quality piece of equipment. Before operating, read all instructions and cautionary markings on the (1) AC Adapter.

- Do not use the ASUS Phone in an extreme environment where high temperature or high humidity exists. The ASUS Phone performs optimally in an ambient temperature between 0 °C (32 °F) and 35 °C (95 °F).
- Do not disassemble the ASUS Phone or its accessories. If service or repair is required, return the unit to an authorized service center. If the unit is disassembled, a risk of electric shock or fire may result.
- Do not short-circuit the battery terminals with metal items.

Operator access with a tool

If a TOOL is necessary to gain access to an OPERATOR ACCESS AREA, either all other compartments within that area containing a hazard shall be inaccessible to the OPERATOR by the use of the same TOOL, or such compartments shall be marked to discourage OPERATOR access.

EU Radio Equipment Directive Compliance

Simplified EU Declaration of Conformity

Hereby, ASUSTek Computer Inc. declares that the radio equipment ASUS_I004D is in compliance with Directive 2014/53/EU. Full text of EU declaration of conformity is available at <https://www.asus.com/support/>. (Search for ZS672KS)

RF Output Table

Items	Maximum Radio-Frequency Output Power Table	
Bluetooth	Bluetooth BR/EDR (2402~2480 MHz)	18.5 (dBm)
	Bluetooth -LE (2402~2480 MHz)	9 (dBm)
WLAN	2.4GHz 802.11b (2412~2472MHz)	16 (dBm)
	2.4GHz 802.11g (2412~2472MHz)	18.5 (dBm)
	2.4GHz 802.11n HT20 (2412~2472MHz)	18.5 (dBm)
	2.4GHz 802.11ax HE20 (2412~2472MHz)	18 (dBm)
	2.4GHz 802.11n HT40 (2422~2462MHz)	18.5 (dBm)
	2.4GHz 802.11ax HE40 (2422~2462MHz)	18 (dBm)
	5GHz 802.11a (5180-5320, 5500-5700, 5745-5825MHz)	18.5 (dBm)
	5GHz 802.11n HT20 (5180-5320, 5500-5700, 5745-5825MHz)	18.5 (dBm)
	5GHz 802.11ac-VHT20 (5180-5320, 5500-5700, 5745-5825MHz)	18.5 (dBm)
	5GHz 802.11ax-HE20 (5180-5320, 5500-5700, 5745-5825MHz)	14 (dBm)
	5GHz 802.11n HT40 (5190-5310, 5510-5670, 5755-5795MHz)	18.5 (dBm)
	5GHz 802.11ac-VHT40 (5190-5310,5510-5670,5755-5795MHz)	18.5 (dBm)
	5GHz 802.11ax-HE40 (5190-5310,5510-5670,5755-5795MHz)	14 (dBm)
	5GHz 802.11ac VHT80 (5210-5290,5530-5610,5775MHz)	18 (dBm)
	5GHz 802.11ax-HE80 (5210-5290,5530-5610,5775MHz)	14 (dBm)
5GHz 802.11ax-HE160 (5170-5330,5490-5650MHz)	13 (dBm)	
NFC	13.553-13.567MHz	-18.25 (dBuA/m@10m)
GSM	GSM 900 Burst (880~915, 925~960MHz)	33.5 (dBm)
	GSM 1800 Burst (1710~1785, 1805~1880MHz)	30.5 (dBm)
WCDMA	WCDMA Band I (1920~1980, 2110~2170MHz)	24 (dBm)
	WCDMA Band III (1710~1785, 1805~1880MHz)	24 (dBm)
	WCDMA Band VIII (880~915, 925~960MHz)	24 (dBm)
LTE	LTE Band 1 (1920~1980, 2110~2170MHz)	24 (dBm)
	LTE Band 3 (1710~1785, 1805~1880MHz)	24 (dBm)
	LTE Band 7 (2502.5-2567.5, 2622.5-2687.5MHz)	24 (dBm)
	LTE Band 8 (880~915, 925~960MHz)	24 (dBm)
	LTE Band 20 (832-862, 791-821MHz)	24 (dBm)
	LTE Band 28 (703~748, 758~803MHz)	24 (dBm)
	LTE Band 34 (2010-2025MHz)	24 (dBm)
	LTE Band 38 (2570-2620MHz)	24 (dBm)
	LTE Band 40 (2300-2400MHz)	24 (dBm)
LTE Band 42 (3400-3600MHz)	24 (dBm)	
5G NR	NR n1 (1922.5-1977.5, 2112.5-2167.5MHz)	24 (dBm)
	NR n3 (1852.5-1907.5, 1932.5-1987.5MHz)	24 (dBm)
	NR n7 (2502.5-2567.5, 2622.5-2687.5MHz)	24 (dBm)
	NR n8 (882.5-912.5, 927.5-957.5MHz)	24 (dBm)
	NR n20 (832-862, 791-821MHz)	24 (dBm)
	NR n28 (705.5-745.5, 760.5-800.5MHz)	24 (dBm)
	NR n38 (2570-2620MHz)	24 (dBm)
	NR n77 (3305.1-4194.99MHz)	24 (dBm)
NR n78 (3305.01-3794.88MHz)	24 (dBm)	

* ASUS phone 5G NR Sub-6/4G LTE band compatibility varies by region, please check compatibility with your local carriers.

NOTE: This RF output power table is for EU member states, the EEA States, the EFTA States and Turkey only. The frequency range and the RF output power may differ from other non-EU countries.

The Wi-Fi operating in the band 5150-5350MHz shall be restricted to indoor use for countries listed in the table below:

AT	BE	BG	CZ	DK	EE	FR
DE	IS	IE	IT	EL	ES	CY
LV	LI	LT	LU	HU	MT	NL
NO	PL	PT	RO	SI	SK	TR
FI	SE	CH	UK (NI)	HR		

RF Exposure Information

This ASUS product has been tested and meets applicable European SAR limits. The SAR limit is 2.0 W/kg in countries that set the limit averaged over 10 grams of tissue. The specific maximum SAR values for this device are as follows:

- Head: 1.43 W/Kg @10g
- Body: 1.335 W/Kg @10g

When carrying this device or using it while worn on the body, either use an approved accessory such as a holster or otherwise maintain a distance of 5 mm from the body to ensure compliance with RF exposure requirements.

CE Marking



Low Blue Light Certification

ASUS Phone reduces the blue light emitted by its screen, providing you with a more comfortable viewing experience.

By default, the screen's brightness is set to Maximum and the phone is in compliance with TÜV Rheinland Low Blue Light certification.



Alleviation of Eye Strain

To alleviate eye strain:

- Take frequent breaks when using your ASUS Phone (at least one 10-minute break every half an hour).
- Regularly focus on distant objects to relax your eyes.
- Do eye exercises often including:
 - (1) Look up and down without moving your head
 - (2) Move your eyes from left to right without moving your head
 - (3) Slowly roll your eyes
 - (4) Move your eyes diagonally

WARNING: Keep your ASUS Phone's screen away from infants and toddlers younger than 2 years. Children 2 years old and above should get no more than an hour of screen time each day.

Using GPS (Global Positioning System) on your ASUS Phone

To use the GPS positioning feature on your ASUS Phone:

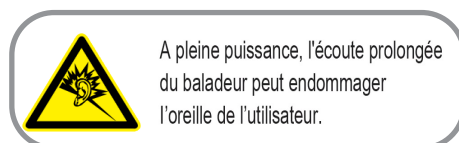
Ensure that your device is connected to the Internet before using Google Map or any GPS-enabled apps.

For first-time use of a GPS-enabled app on your device, ensure that you are outdoors to get the best positioning data.

When using a GPS-enabled app on your device inside a vehicle, the metallic component of the car window and other electronic devices might affect the GPS performance.

Prevention of Hearing Loss

To prevent possible hearing damage, do not listen at high volume levels for long periods.



For France, headphones/earphones for this device are compliant with the sound pressure level requirement laid down in the applicable EN 50332-1:2013 and/or EN50332-2:2013 standard required by French Article L.5232-1.

General Usage (typical body-worn) (for Japan)

This device ((front & rear side) should be operated under a separation distance of 15 mm from the human body.

* The other four sides are not in close proximity to the human body at the general use as described above.

Coating notice

IMPORTANT! To provide electrical insulation and maintain electrical safety, a coating is applied to insulate the device except on the areas where the I/O ports are located.

Green ASUS notice

ASUS is devoted to creating environment-friendly products and packaging to safeguard consumers' health while minimizing the impact on the environment. The reduction of the number of the manual pages complies with the reduction of carbon emission.

For the detailed user manual and related information, refer to the user manual included in the ASUS Phone or visit the ASUS Support Site at <https://www.asus.com/support>.

ASUS Recycling/Takeback Services

ASUS recycling and takeback programs come from our commitment to the highest standards for protecting our environment. We believe in providing solutions for you to be able to responsibly recycle our products, batteries, other components as well as the packaging materials. Please go to <http://csr.asus.com/english/Takeback.htm> for detailed recycling information in different regions.

ASUSTEK (UK) LIMITED.

1st Floor, Sackville House, 143-149 Fenchurch Street, London, EC3M 6BL
England
United Kingdom

Model name: ASUS_I004D (ZS672KS)

Manufacturer:	ASUSTeK Computer Inc.
Address:	1F, No.15, Lide RD., Beitou Dist., Taipei City 112, Taiwan
Authorised representative in Europe:	ASUS Computer GmbH
Address:	HARKORT STR. 21-23, 40880 RATINGEN, GERMANY

Index

A

Advanced camera features 53

ASUS Phone 8

- charging 11
- microSD 9
- nano SIM card 9
- parts and features 8
- turning on/off 13

B

Backup and reset 70

Beauty

- see also Advanced camera features 53

Block list 47

- blocking 47
- unblocking 47

Bluetooth 57

- enabling 57
- pairing 58
- unpairing 58

C

Calculator 66

Call logs 41

- redial your last-called number 42
- saving calls to Contacts 41

Calls 39

- answering 41
- calling from Contacts 40
- calling your favorite contacts 41
- dialing a phone number 39
- launching the Phone app 39
- other call options 42
- receiving 41
- see Call logs 41
- see Extension number 39
- see Smart Dialing 40

Camera 51

- camera home screen 52
- launching 51
- see Advanced camera features 53

Chrome 30

- bookmarking pages 31
- clearing the browser data 31
- launching 30
- sharing pages 31

Clock 63

- alarm clock 63

- launching 63
- stopwatch 64
- timer 65
- world clock 64

Contacts 44

- adding 45
- adding an extension number 45
- contacts settings 44
- customizing your contact's profile 46
- see also Social networking 47
- setting up your profile 44

D

Data Transfer 36

Date and time 23

- setting up 23

Dual SIM feature 37

- assigning 38
- renaming 37
- SIM card for data service 38
- SIM card for voice calls 38

E

Extension number 39

- auto dialing 40
- confirmation prompt 39
- dialing 39

F

Face Unlock 27

Favorite contacts 41

- calling 41
- marking 46

File Manager 35

- accessing the internal storage 35

Fingerprint 25

- setting up fingerprint ID from Settings 26
- starting your ASUS phone for the first time 25
- locate finger print scanner 25
- protect your phone 25

G

Gallery 54

- deleting files 55
- editing images 54
- sharing files 54
- viewing the photo location 54

Gmail 32

Google Calendar 33

- creating events 33
- creating reminders 34

- editing or removing events 33
- editing or removing reminders 34

H

- Headset 49
 - connecting 49
- Home screen 18
 - personalizing 21
 - see also Wallpapers 22

L

- Lock screen 24
 - customizing 24
 - see also Securing your ASUS phone 71

M

- Managing your call logs 41
 - redialing your last-called number 42
 - saving to Contacts 41
- Messages 48
 - replying to messages 48
 - sending messages 48

MicroSD 9

Mobile Manager 69

- Mobile network 56
 - enabling 56

N

- Nano SIM cards 37
 - assigning a preferred nano SIM card 38
 - renaming 37
 - SMS messages 38
- Night 53

P

- Panorama
 - see also Advanced camera features 53

Q

- Quick settings 19
 - adding features 19
 - removing features 19

R

- Ringtone 23
 - setting up 23
 - sound 23

S

- Security 71
- Smart Dialing 40

- Social networking 47
- Sound Recorder 67
 - launching Sound Recorder 67
 - pausing a recording 68
 - recording List 68

Storage 70

- System 70
 - updating 70

System notifications 20

T

- Tethering 59
 - Wi-Fi Hotspot 59
- Time lapse
 - see also Advanced camera features 53
- Touchscreen 15
 - launching apps 15
 - moving or deleting items 15
 - moving through pages or screens 16
 - zooming in 16
 - zooming out 17

W

- Wallpapers 22
- Weather 61
 - launching 61
 - weather home screen 62
- Wi-Fi 56
 - connecting 57
 - disabling 57
 - enabling 56

Y

- YT Music 50
 - Setting up your YT Music 50

Z

ZenUI 7