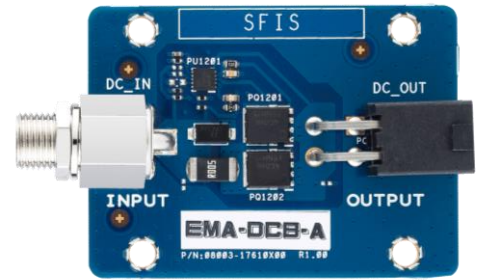


# EMA-DCB-A

- 12V DC-in convert to 24+4 pin ATX power out, supports up to 12V/10A
- Overvoltage Input Protection: 15.5V
- Overcurrent Output Protection: 20A
- Wide temperature range endurance: 0~60°C
- Lockable DC-in Jack and Compatible with ASUSIoT Mini ITX-motherboards



## Specifications

<b>Power Limit</b>	Input	12V $\pm$ 5% Overvoltage protection:15.5V
	Output	Support up to: 12V/10A Overcurrent protection: 20A
<b>DC Power connector</b>	Power input	Lockable DC-in Jack
	Power output	4-Pin ATX Connector
<b>ATX input Cable</b>	ATX 24-pin connector	1 x Output
	ATX 4-pin connector	1 x Output
	ATX 4-pin connector	1 x Input
	SATA Power connector	1 x Output
	SATA Power connector	1 x Output
<b>Supported Motherboards</b>	ASUSIoT Mini-ITX Motherboards	Q370I-IM-A Q370I-IM-A R2.0 H310I-IM-B Q470EI-IM-A W480EI-IM-A
<b>Environment</b>	Operating Temperature	0~60° C
	Non-Operating Temperature	-40~85° C
	Relative Humidity	10%~95%
<b>Physical Characteristics</b>	Dimension (L*W*H)	60*37*12 mm
	Weight	15 g
<b>Certification</b>	EMC	CE, FCC

## Order Information

Model name	Part number	Description
EMA-DCB-A	90ME03T0*	DC-DC Power Card,Power Cable,Bracket
EMA-DCB-A	90ME03T1*	DC-DC Power Card,Power Cable,Bracket,F-M Cable
EMA-DCB-A	90ME03T2*	DC-DC Power Card,Power Cable,Bracket,2X2P Cable

\* The part number might vary for different regulations and package. Please consult the TPM in your region for exact 90PN.

## Packing List

Part number	Description	Quantity
14017*	Power Cable	1
13ME*	Bracket	1
13MS*	Screw Pack	1

\* The part number might vary due to part number revision.

## Optional Accessories

Part number	Description	Quantity
14017*	F-M Cable	1
14017*	2X2P Cable	1

\* The part number might vary due to part number revision.

\* The optional accessories can be configured with SBC by case. Please refer to Order Information and contact the TPM in your region if needed.