

BT Turbo Remote

BT Turbo Remote provides a user-friendly interface that allows you to use your smartphone as the remote controller via the bluetooth connection for the **BT Turbo Key**, **Pocket Media**, and **Reset/Off** functions.

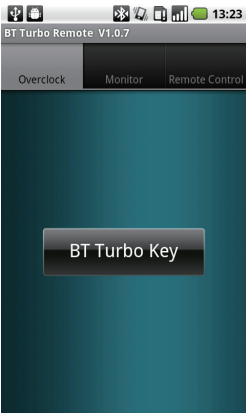


- Only Windows® 7™/Vista™ OS support **BT Turbo Remote**.
- **BT Turbo Remote** currently supports iPhone and smartphones using , Android, Windows Mobile, and Symbian systems.
- For iPhone, download the **BT Turbo Remote** utility from the **App Store**.
- The application interfaces vary with the phone platforms, but the functions remain the same.

BT Turbo Key

Allows you to use the smartphone to remotely overclock or monitor your computer.

Overclock



Monitor: voltage

Voltage	Temperature	Fan Speed	Frequency
Vcore	0.99200	[V]	
+3.3V	3.32800	[V]	
+5V	5.01700	[V]	
+12V	12.03300	[V]	

Monitor: temperature

Voltage	Temperature	Fan Speed	Frequency
CPU	37	[°C]	
MB	42	[°C]	

Monitor: fan speed

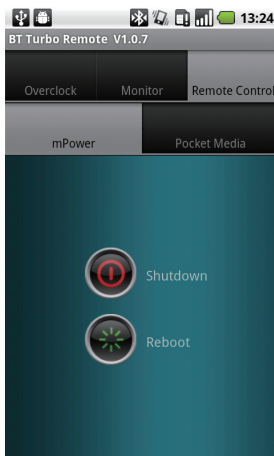
Voltage	Temperature	Fan Speed	Frequency
CPU	1618	[RPM]	

Monitor: frequency

Voltage	Temperature	Fan Speed	Frequency
Core 0	803.4	[MHz]	
Core 1	803.4	[MHz]	

Reset/Off

Allows you to use the smartphone to remotely shut down or restart your system .

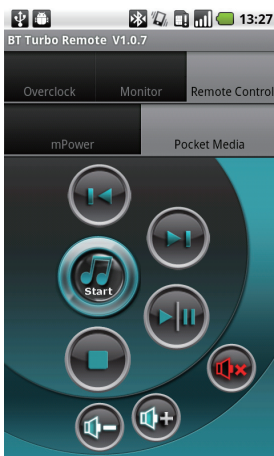
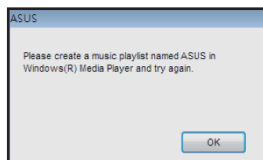


Pocket Media

Allows you to use the smartphone to remotely control the playback of the audio files in your computer via the Windows® Media Player.



The first time you click the **Pocket Media** tab on your iPhone / smartphone, a messages pops up on the computer requesting you to create a music playlist named ASUS in Windows® Media Player. If you do not do so, you need to manually open the Windows Media Player every time before you use the Pocket Media function on your iPhone / smartphone.

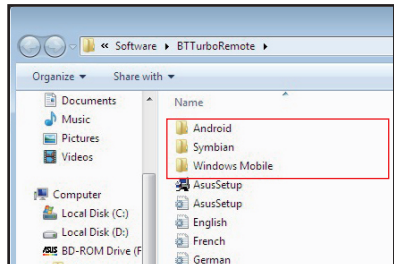


Setting up bluetooth connection between your computer and iPhone / smartphone

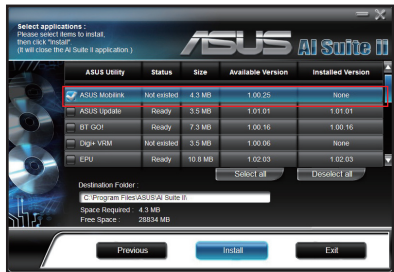
Installing the necessary utilities

Before using **BT Turbo Remote**, you need to install the **BT Turbo Remote** utility on your iPhone / smartphone and the **Mobilink** utility on your computer so as to pair your computer with your iPhone / smartphone.

1. Install the **BT Turbo Remote** utility on your smartphone. Get the utility from **motherboard support DVD > Utilities > ASUS BT Turbo Remote** and select the folder based on your smartphone system, or download the latest version from ASUS official website at <http://support.asus.com>.



2. Install the **Mobilink** utility on your computer from **motherboard support DVD > Utilities > ASUS AI Suite II > ASUS Mobilink**.



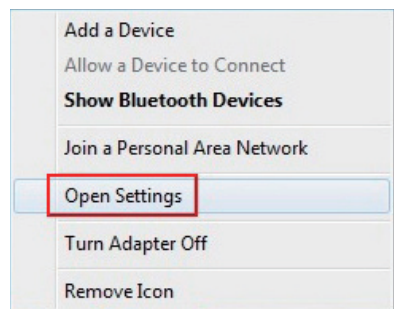
Establishing the Standard Serial over Bluetooth Link (Virtual COM Port)

Creating a virtual COM port on your computer is required for the communication between your computer and your iPhone / smartphone.

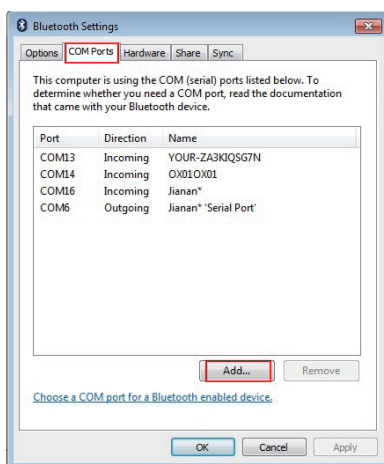


If your system cannot establish a virtual COM port automatically, follow the steps below to manually create one.

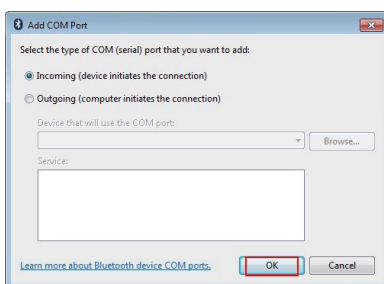
1. From the Windows notification area, click the Bluetooth icon and select **Open Settings**.



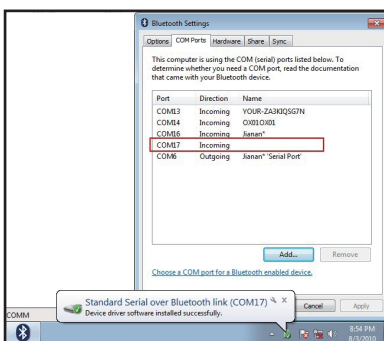
2. Click the **COM Ports** tab and click **Add** to create (add) a virtual COM port.



3. Select **Incoming** as the type of COM port.



4. A virtual COM port is successfully created.



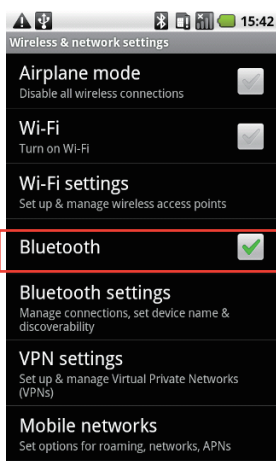
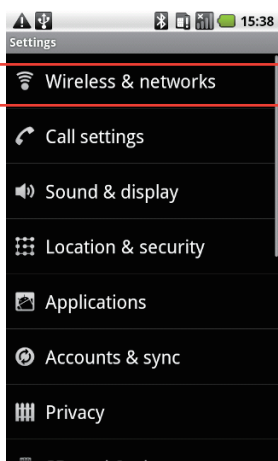
Pairing your iPhone / smartphone with BT Turbo Remote



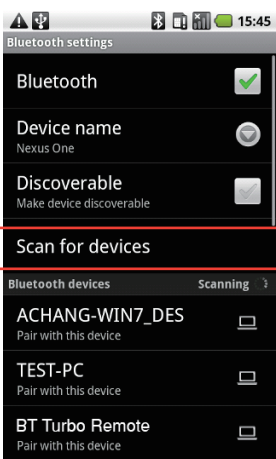
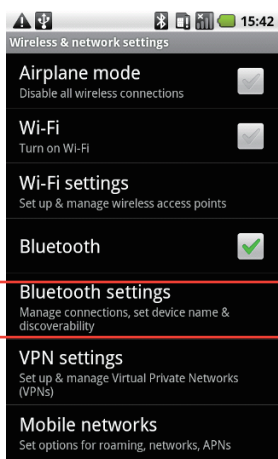
The operation screens in the following sections are for reference only. The operation procedures may vary with the smartphone brands and models. Refer to the user manual that came with your smartphone for detailed operation.

Android system

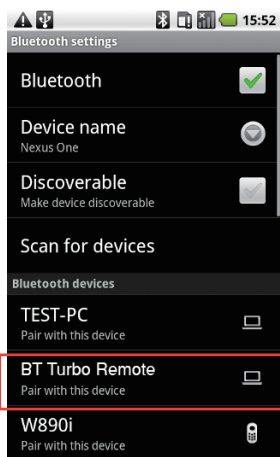
1. Select **Wireless & networks** under **Settings**.
2. Enable **Bluetooth**.



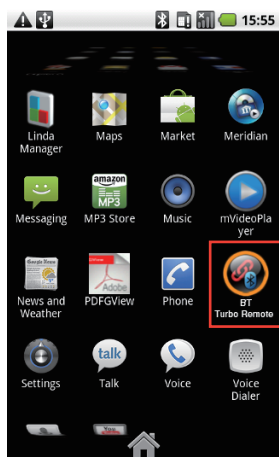
3. Select **Bluetooth settings**.
4. Select **Scan for devices**.



5. Pair with **BT Turbo Remote**.



6. Run **BT Turbo Remote** from the program menu.

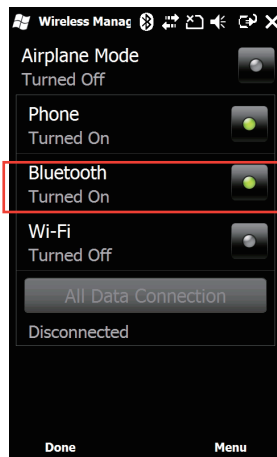


Windows Phone system

1. Select **Wireless Manager**.



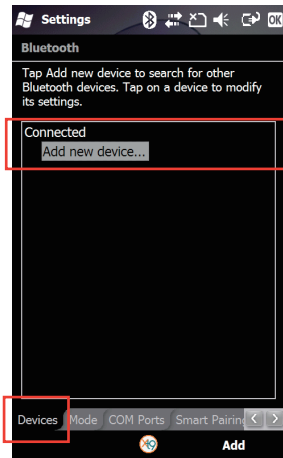
2. Enable **Bluetooth**.



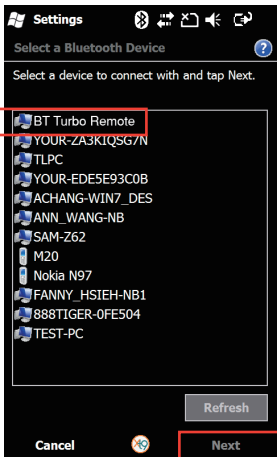
3. Select **Bluetooth**.



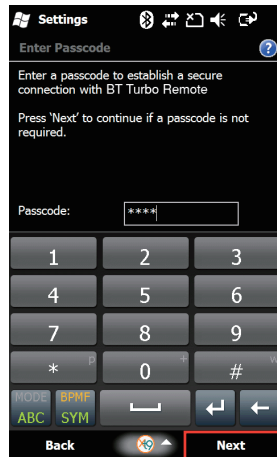
4. In the **Devices** tab, select **Add new device**.



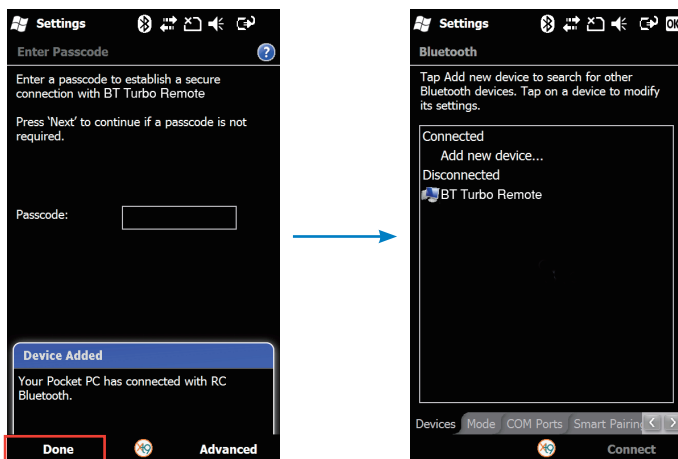
5. Select **BT Turbo Remote** and select **Next**.



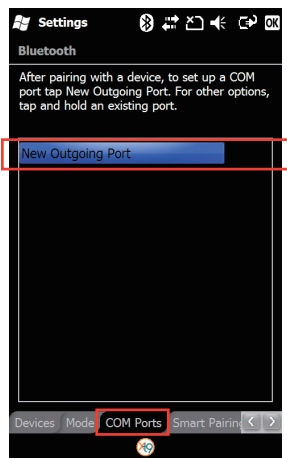
6. If a passcode is required, enter **"000000"** and select **Next**.



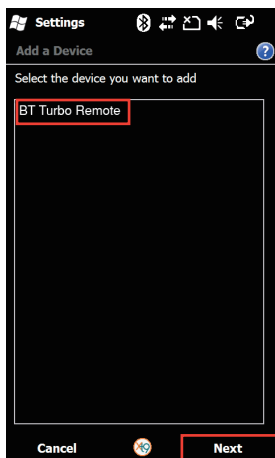
7. Select **Done** when your phone is paired with **BT Turbo Remote**.



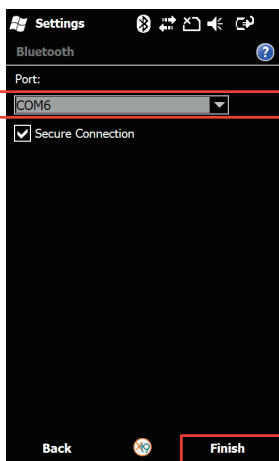
8. In the **COM Ports** tab, create a **New Outgoing Port** for **BT Turbo Remote**.



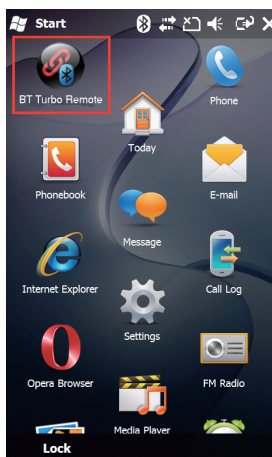
9. Select **BT Turbo Remote** and select **Next**.



10. Select a COM port for **BT Turbo Remote** and select **Finish**.



11. Run **BT Turbo Remote** from the program menu.

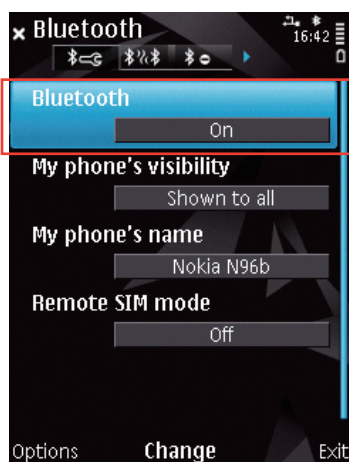


Symbian system

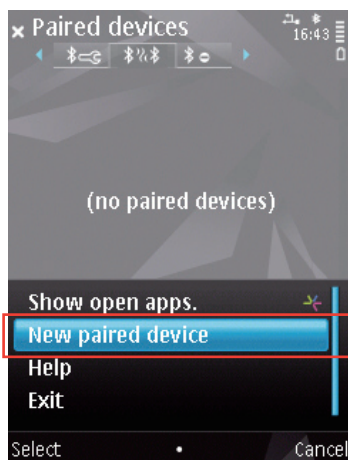
1. Open **Bluetooth** under **Tools**.



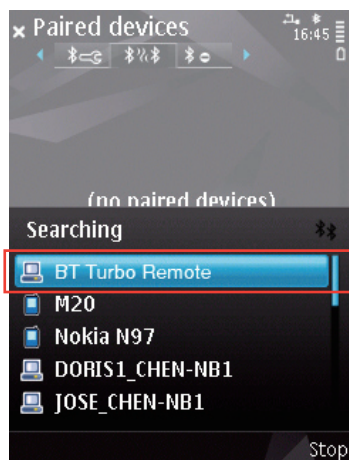
2. Enable **Bluetooth**.



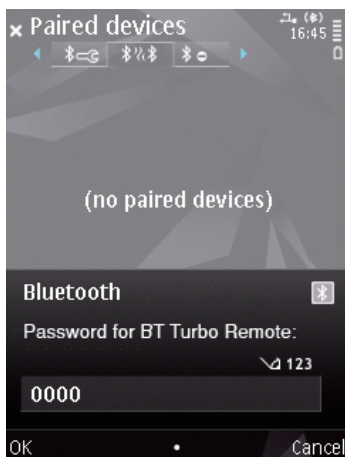
3. Select **New paired device**.



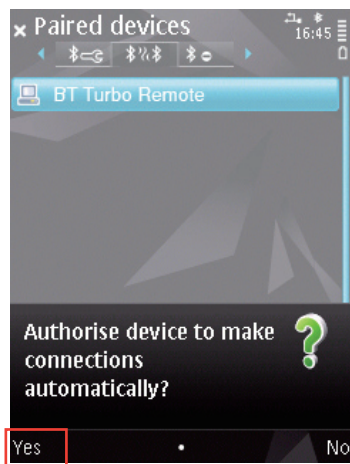
4. Select **BT Turbo Remote**.



5. Enter "000000" for the passcord.



6. Select **Yes** to allow automatic authorisation.

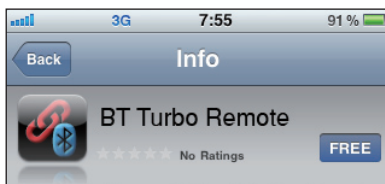


7. Run **BT Turbo Remote** under **Applications**.



iPhone system

1. Search **BT Turbo Remote** within **App Store** and install it to your iPhone.




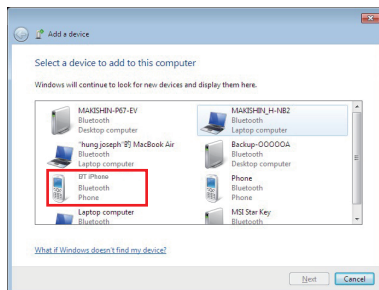
2. On your iPhone, tap **Settings > General > Network > Internet Tethering**. Enable **Internet Tethering** and tap **Turn on Bluetooth** when a dialog box appears.



3. Return to **General > Bluetooth**. Stay at this page for later PIN entering and pairing.



4. From the Windows notification area, click the Bluetooth icon  and select **Add a device**.
5. Your iPhone should be detected by your computer now. Select **BT iPhone** (may be labeled as your iPhone's name) and click **Next**.
6. Right-click **BT iPhone** (may be labeled as your iPhone's name) and select **Connect**.

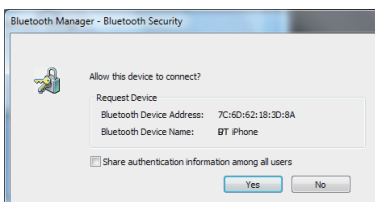


7. Enter **PIN** on your iPhone and tap **Done**. Enter the same **PIN** on your computer and click **Pair** to start the connection. When pairing succeeds, the name of the PC will be shown in the Devices list.



Ensure that you see **Internet Tethering** on the top of your iPhone. If not, repeat the previous steps to rebuild the connection.

8. Click **Yes** to allow the device to connect.



9. Windows Firewall may block the Bluetooth connection. Click **Allow access** to complete the connection.



The Bluetooth connection screens may vary with your operating system version and Bluetooth-enabled devices.