

ASUS Net4 Switch

User's Guide

Contents

1	ASUS Net4 Switch	1
1.1	Introduction	1
1.2	How to use ASUS Net4 Switch	1
1.3	Diagnose	11
1.4	Others	13

1 ASUS Net4 Switch

1.1 Introduction

It's hard and troublesome for user to set network environment like IP, DNS, proxy. User must set network again and again, if he moved in many places. User may hope the network setting can be auto configured when the environment changed. User can not know why he can not access internet. It seems all his settings are right.

Net4 Switch can save every network settings. You only have to set new network for one time with simple interface.

Net4 Switch can auto detect new network and auto configured after environment changed.

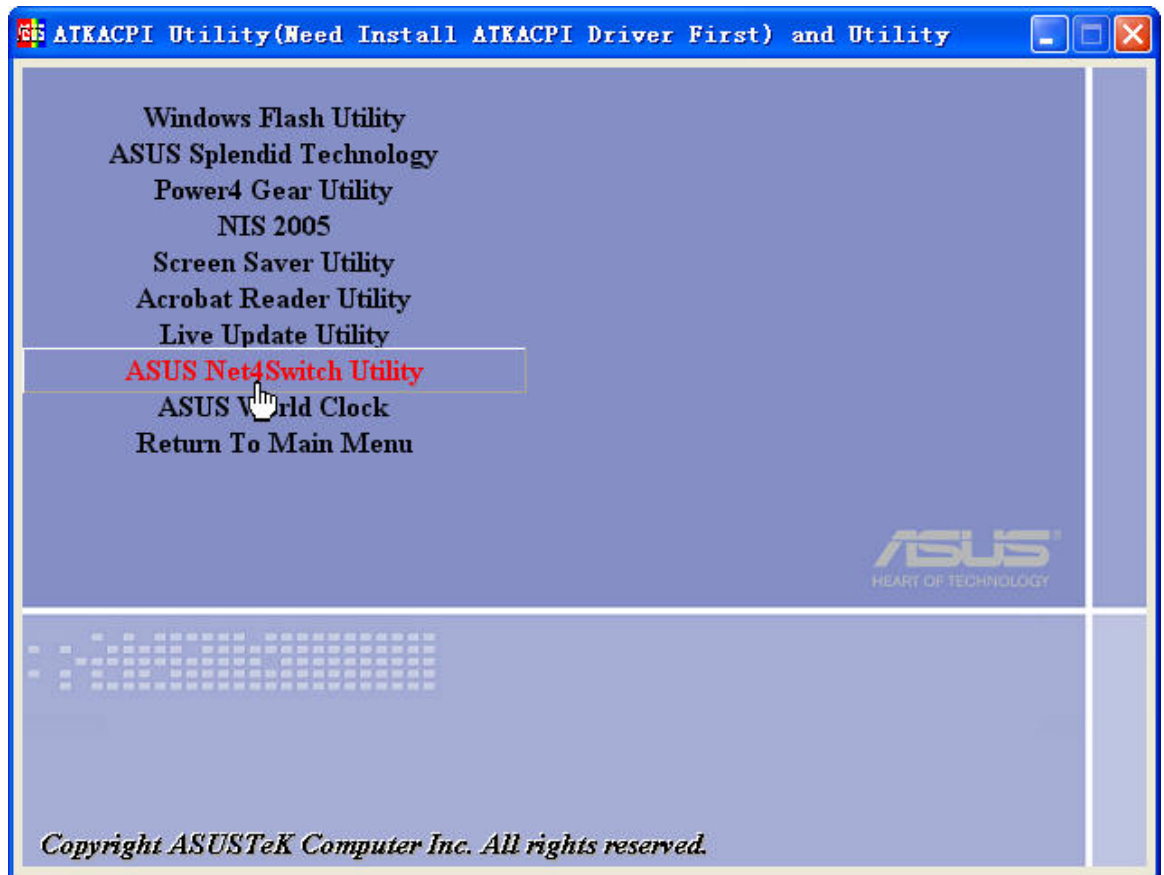
Net4 Switch provides:

1. Simple UI for profile editing.
2. Different Network auto detecting & configuration
3. Multiple Network supporting

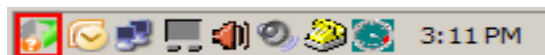
Start -> All Programs->ASUS Utility

1.2 How to use ASUS Net4 Switch

1. Install ASUS Net4 Switch



2. Click **Start \ All Programs \ ASUS Utility \ Net4Switch \ ASUS Net4Switch** or the shortcut on Desktop or the icon in the Notification area.



3. Then you will see below main window. Please press **“Create a new profile”**



4. Please enter the name of the profile you want to add. The profile name must be no more than 36 characters long.



NET4SWITCH

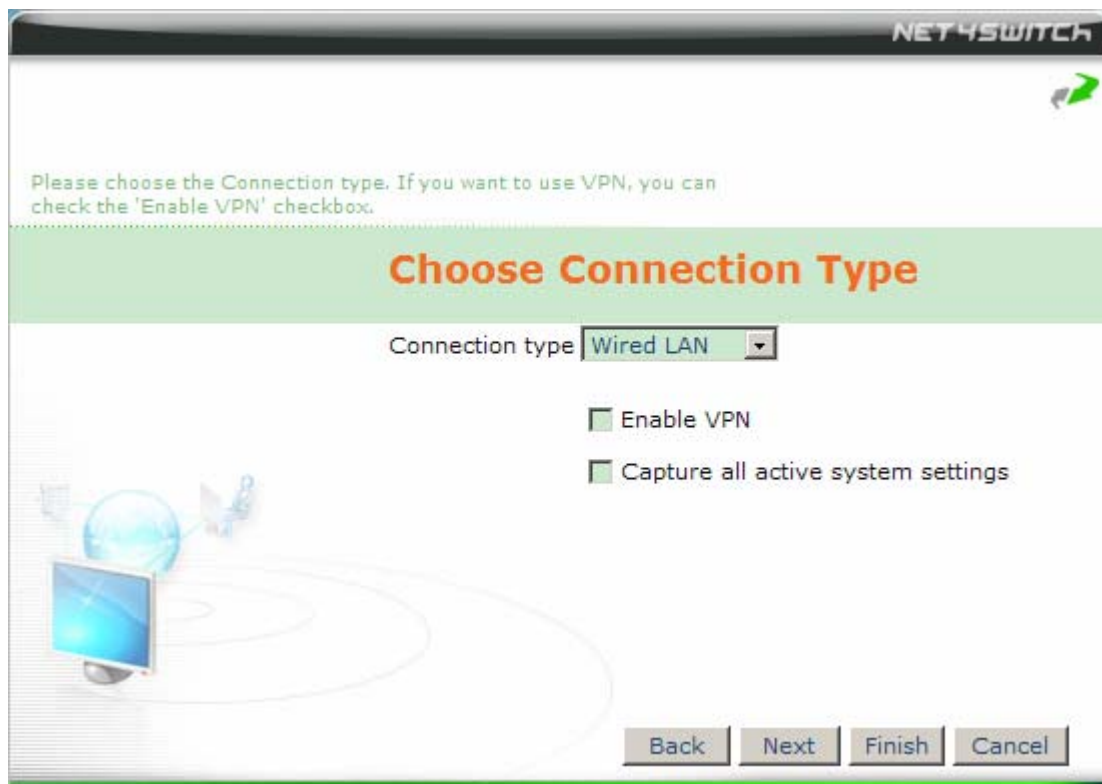
Please enter the name of the profile you want to add. The profile name must be no more than 36 characters long.

Set Profile Name

Profile name

Back Next Finish Cancel

5. Press “**Next**” to choose the Connection type. If you want to use VPN, you can check the “**Enable VPN**” checkbox



NET4SWITCH

Please choose the Connection type. If you want to use VPN, you can check the 'Enable VPN' checkbox.

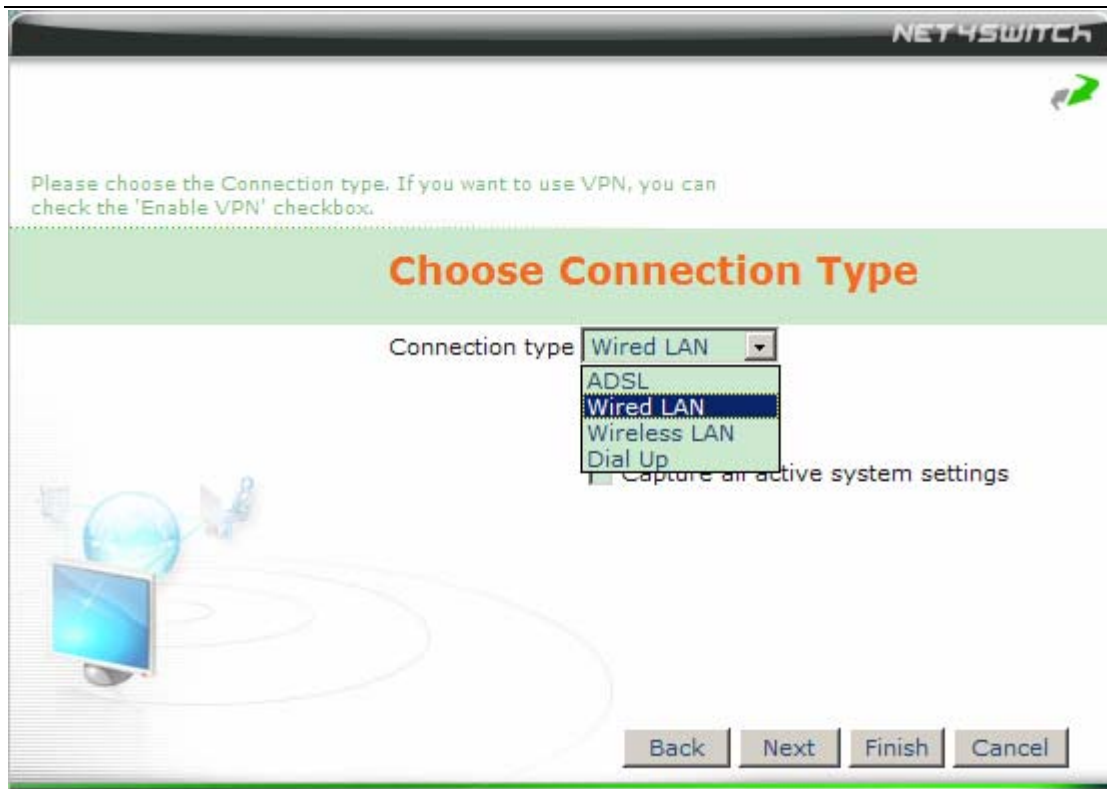
Choose Connection Type

Connection type

Enable VPN

Capture all active system settings

Back Next Finish Cancel



6. Press "Next" to choose a device, if you have only one network device, just press "Next" directly.



7. Please set the IP

NET4SWITCH

Please set the IP.

Set IP

Obtain an IP address automatically

Use the following IP address

IP address

Subnet mask

Default gateway

Back Next Finish Cancel

8. Please set up the DNS

NET4SWITCH

Please set up the DNS.

Set up the DNS

Obtain the DNS server address automatically

Use the following DNS server addresses

Preferred DNS server

Alternate DNS server

Back Next Finish Cancel

9. Please set the WINS.



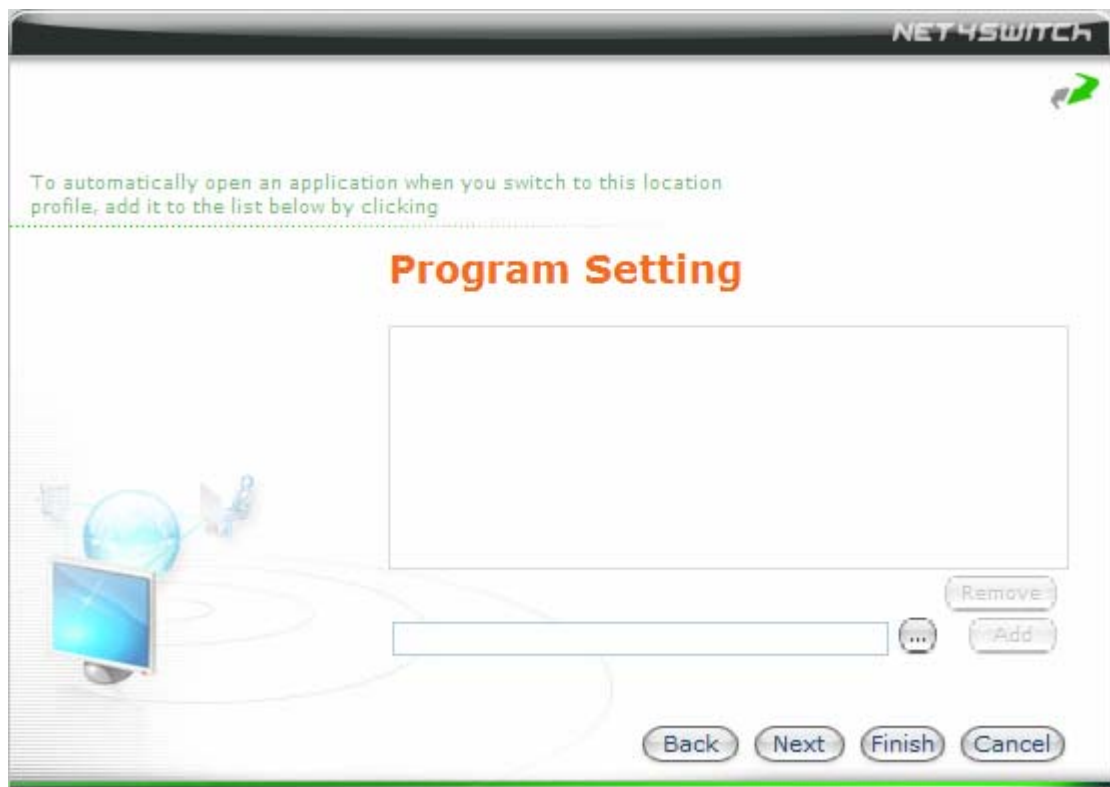
10. Please set the home page and the proxy.



11. Please set the ICS, ICF and the default printer.

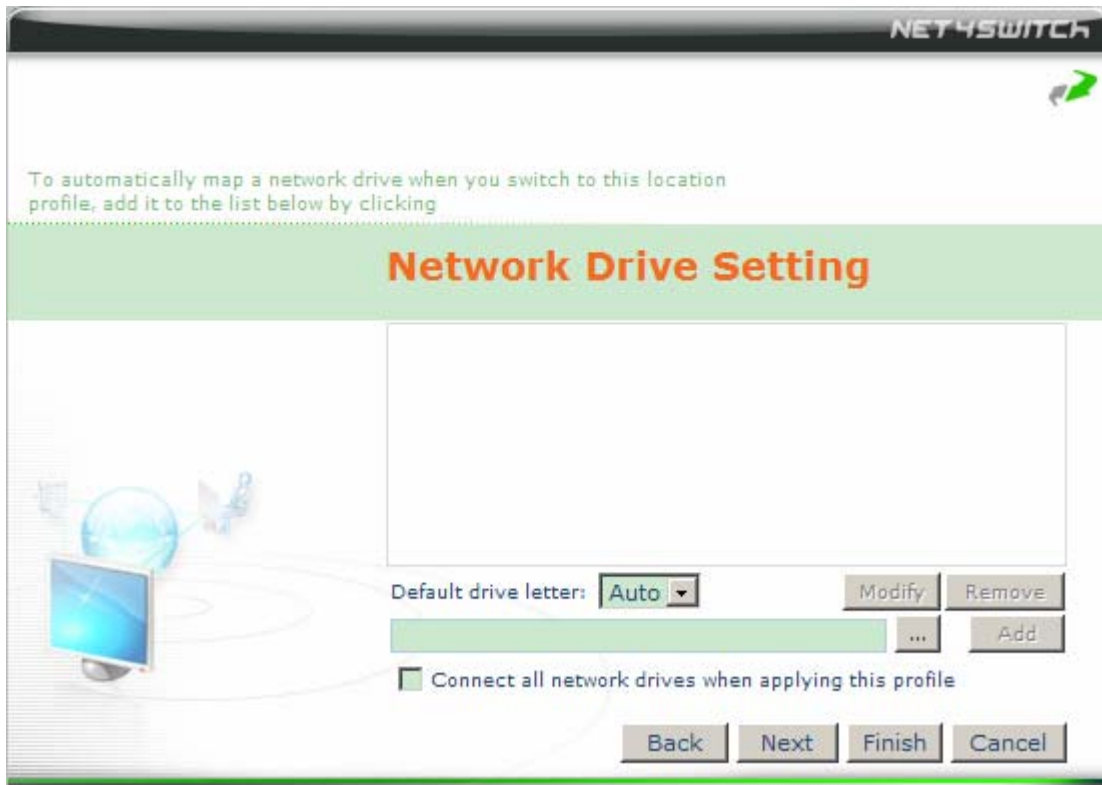


12. Add an application, if you want it to be opened automatically, when you switch to this location profile.



13. To automatically map a network drive when you switch to this location profile,

add it to the list.



14. Check all the settings and save the profile.



The screenshot displays the ASUS NET4SWITCH utility window. At the top, the title bar reads 'ASUS NET4SWITCH'. Below the title bar, there are several icons representing different network profiles and a 'NET4SWITCH' logo. A large, stylized image of a network switch is visible in the background. A 'Profile' dropdown menu is set to 'Office', and a 'Connect' button is present. The main content area features a large 'Office' heading with a globe icon and a laptop image. Below this, the status is 'Connected', and a 'Detail' button is available. A table lists the connection details:

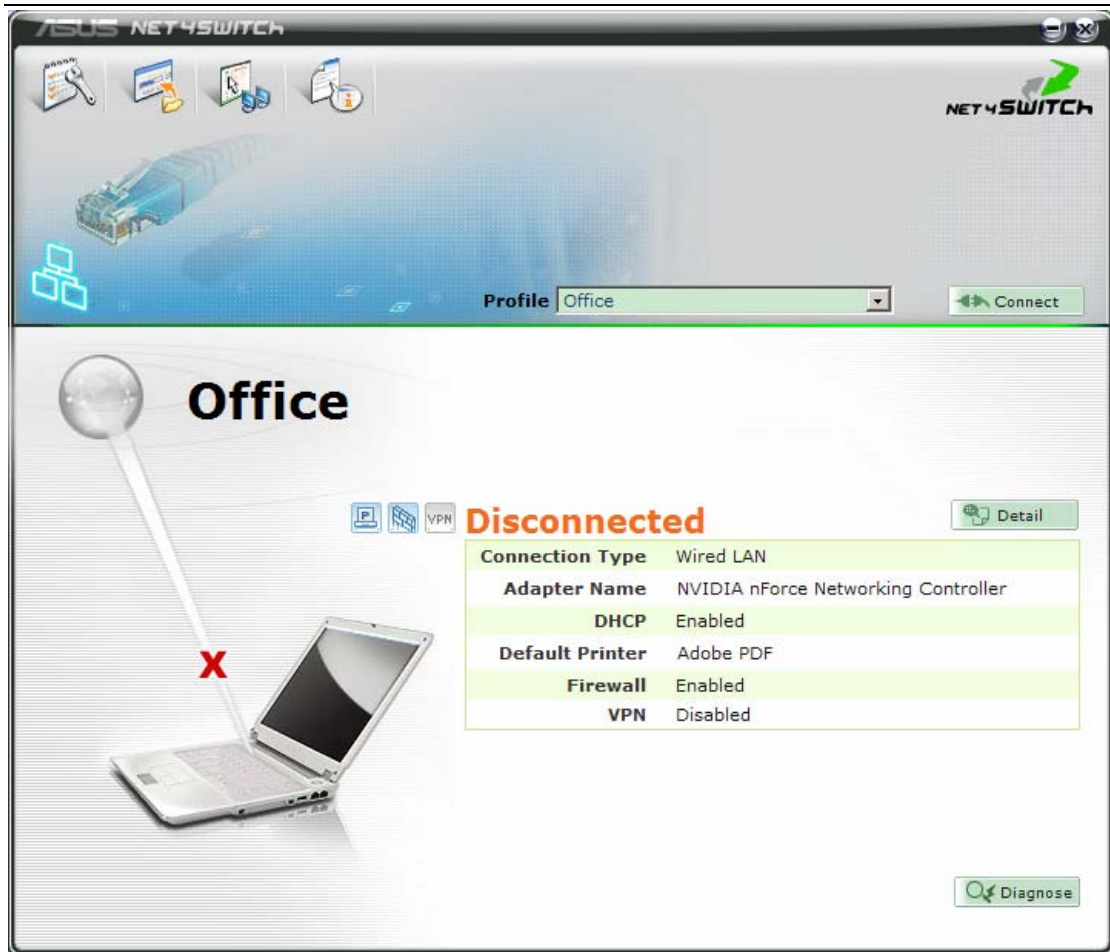
Connection Type	Wired LAN
Adapter Name	NVIDIA nForce Networking Controller
DHCP	Enabled
Default Printer	Adobe PDF
Firewall	Enabled
VPN	Disabled

A 'Diagnose' button is located at the bottom right of the interface.

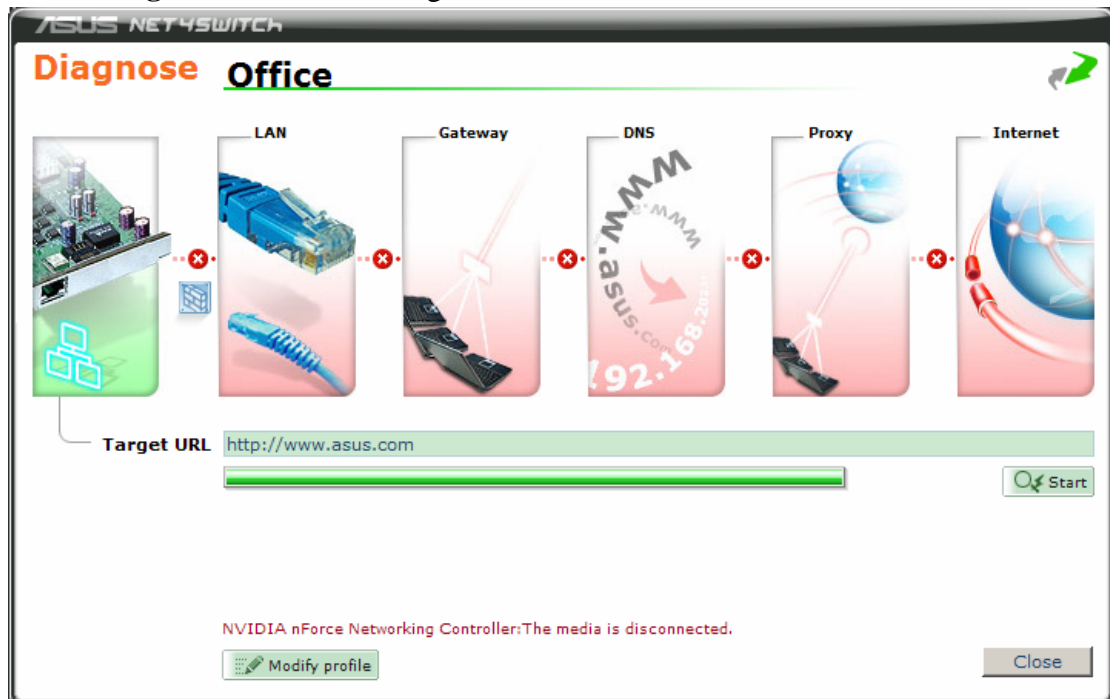


1.3 Diagnose

If the network is disconnected, you can use Diagnose to check the possible reason.



Press “Diagnose” to start the diagnose



1.4 Others

1. Setting



Global setting will apply to all the location profiles.



2. Import



3. Management

ASUS NET4SWITCH

Management

Profile: Office

Connect

Office

Connected

Connection Type	Wired LAN
Adapter Name	NVIDIA nForce Networking Controller
DHCP	Enabled
Default Printer	Adobe PDF
Firewall	Enabled
VPN	Disabled

Diagnose

NET4SWITCH

Profile Management

<input checked="" type="checkbox"/>	Office	Wired LAN
-------------------------------------	--------	-----------

Close

- Add
- Remove
- Edit
- Detail
- Copy
- Import
- Export

4. About

