

NB probe

User's Guide

Contents

Chapter 1	NB probe	1
1.1	Introduction	1
1.2	How to get your notebook's information	1
1.2.1	Summary tab	1
1.2.2	Drive tab.....	2
1.2.3	System Information tab.....	3

Chapter 1 NB probe

1.1 Introduction

This utility could help you to monitor the status of your computer, including below function:

Monitors CPU, disk, and drive status for the user

Monitors the current system and provides system information to the user.

Provides easy and clear user interface.

You could start this utility by the following steps:

Start-All Programs-ASUS utility-NB probe

1.2 How to get your notebook's information

1.2.1 Summary tab

In the Summary tab, you could get CPU status and basic Disk status.



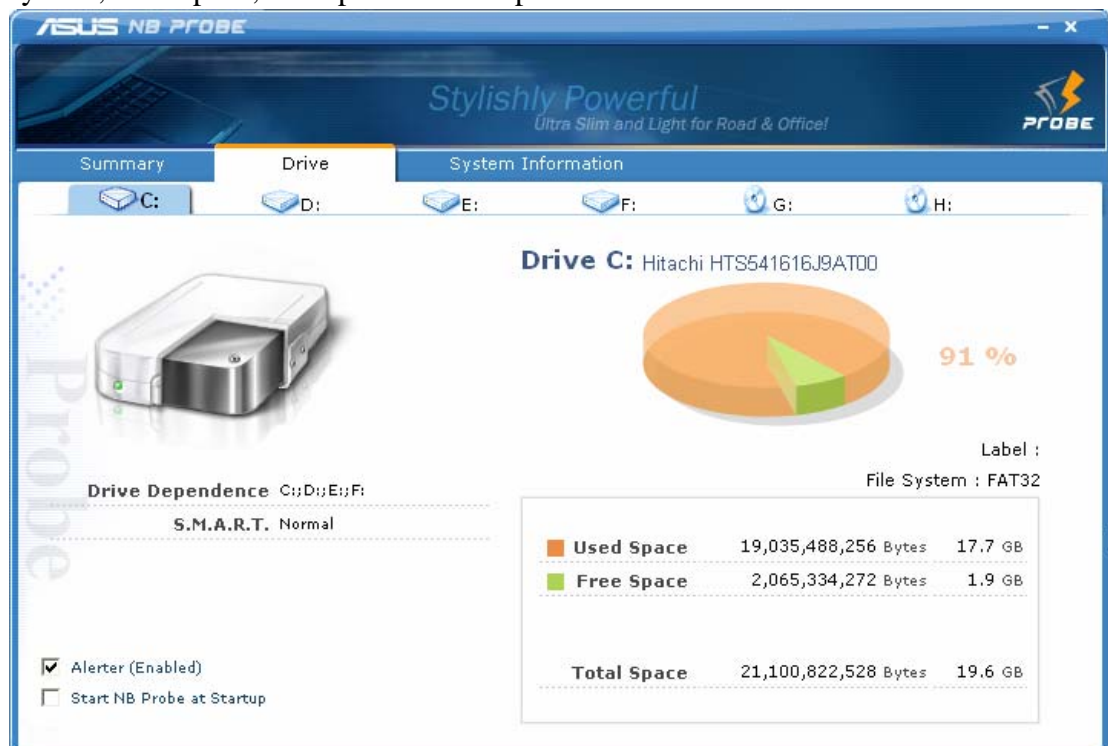
If your CPU or disk status is abnormal, the notebook will alert & show warning icons as below picture. (you could disable alerter by clicking Alerter on the bottom-left on the interface.)



1.2.2 Drive tab

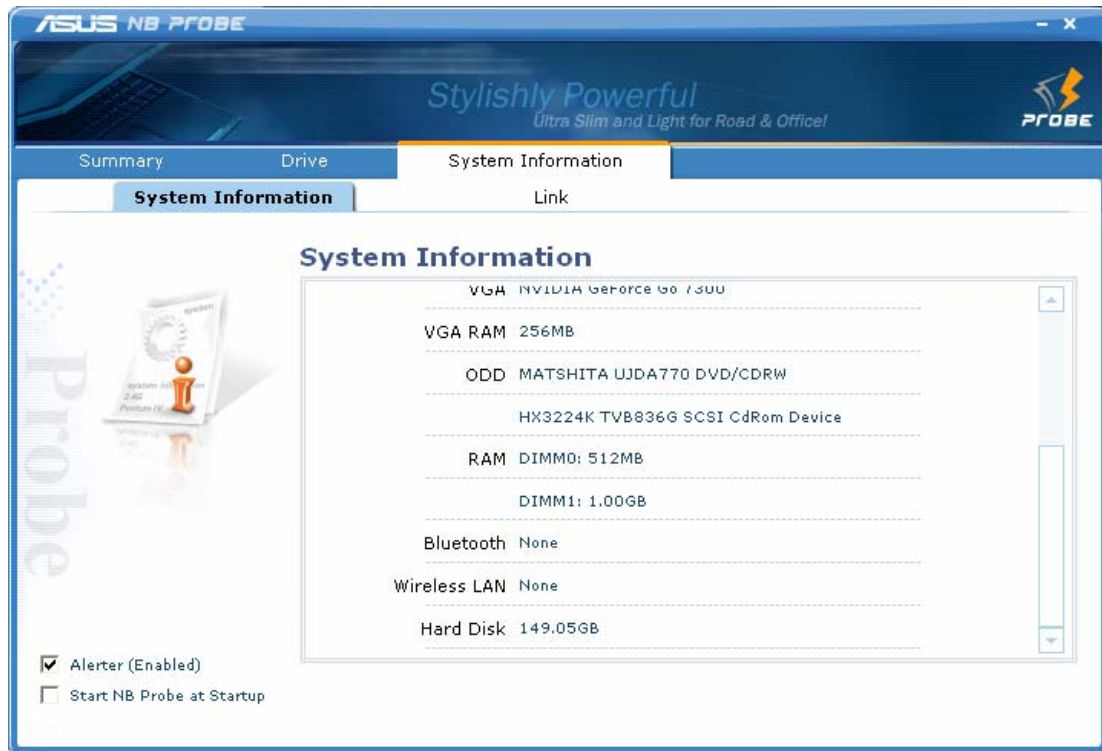
In the Drive tab, it shows you each partition of your disk.

In each partition tab, you could get detail information of this partition, including file system, used space, free space & total space etc.

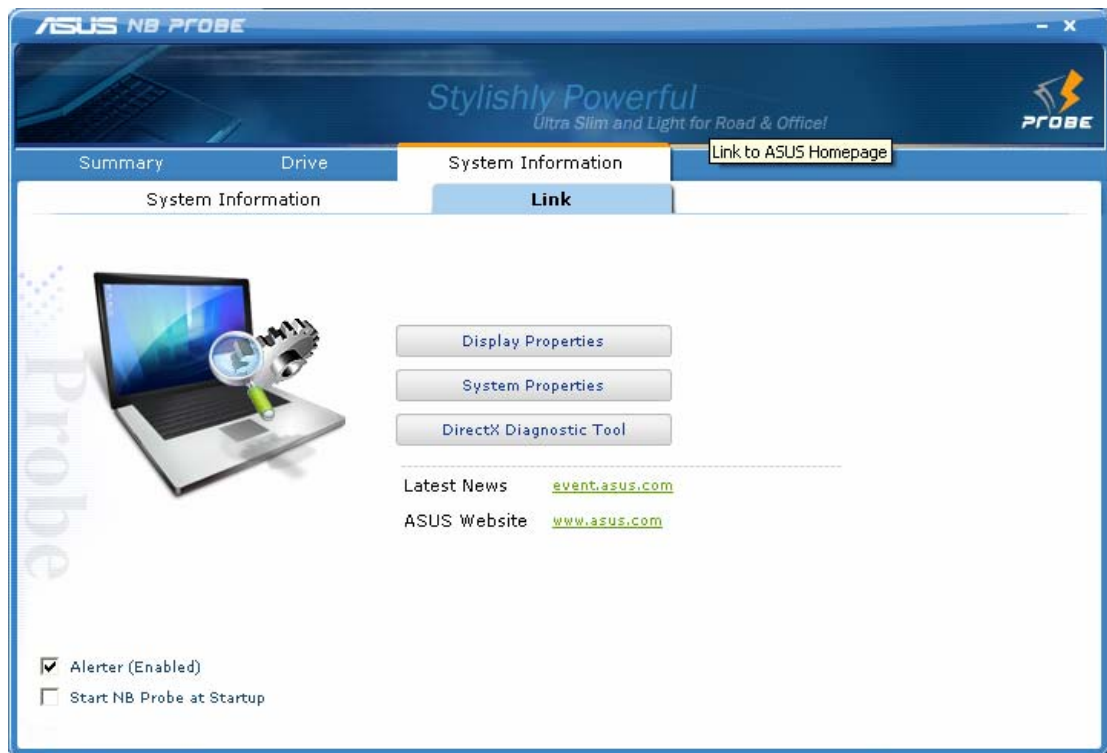


1.2.3 System Information tab

There are 2 sub-tabs under System Information tab: System information & Link. When you click “System Information” sub-tab, it shows you the configuration of your notebook.



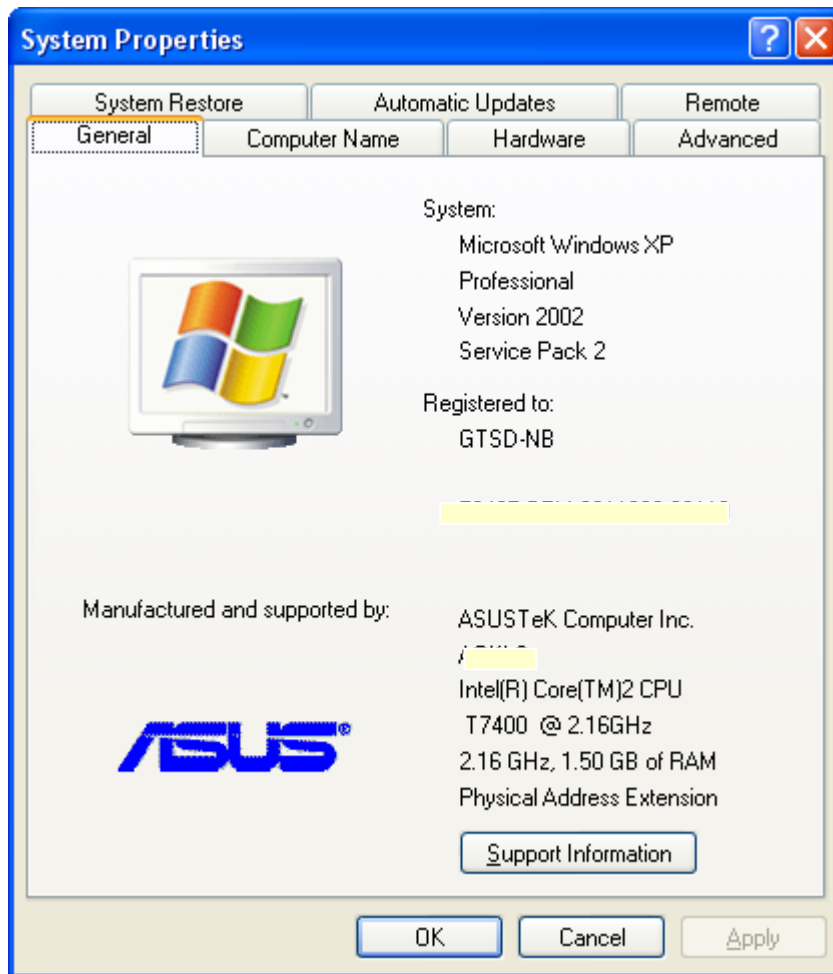
When you click “Link”, you have 3 options to choose.



If you click “Display Properties” button, it will link to Windows display properties.



If you click “System Properties” button, it will link to Windows system properties.



If you click “DirectX Diagnostic Tool” button, it will link to Windows directX diagnostic tool.

