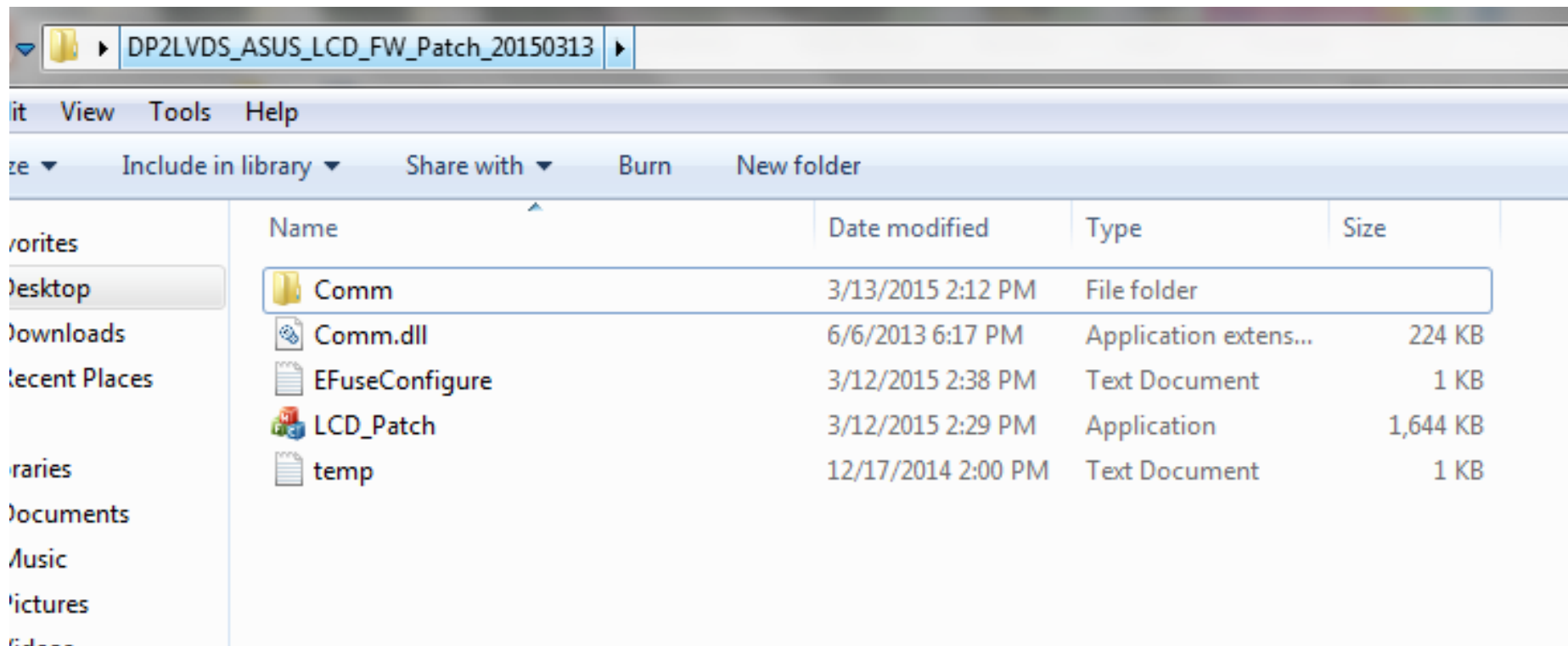


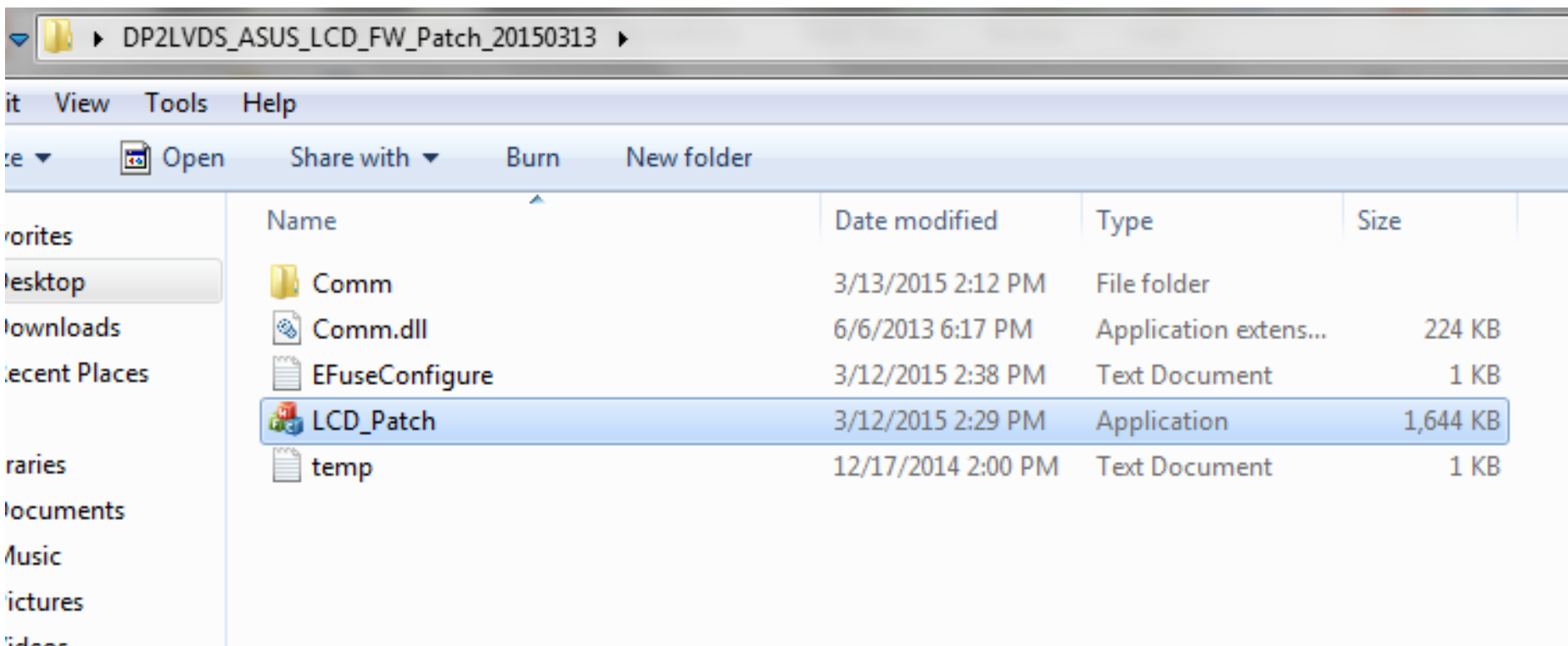
ASUS LCD FW Patch

Update your firmware to enhance the stability of panel

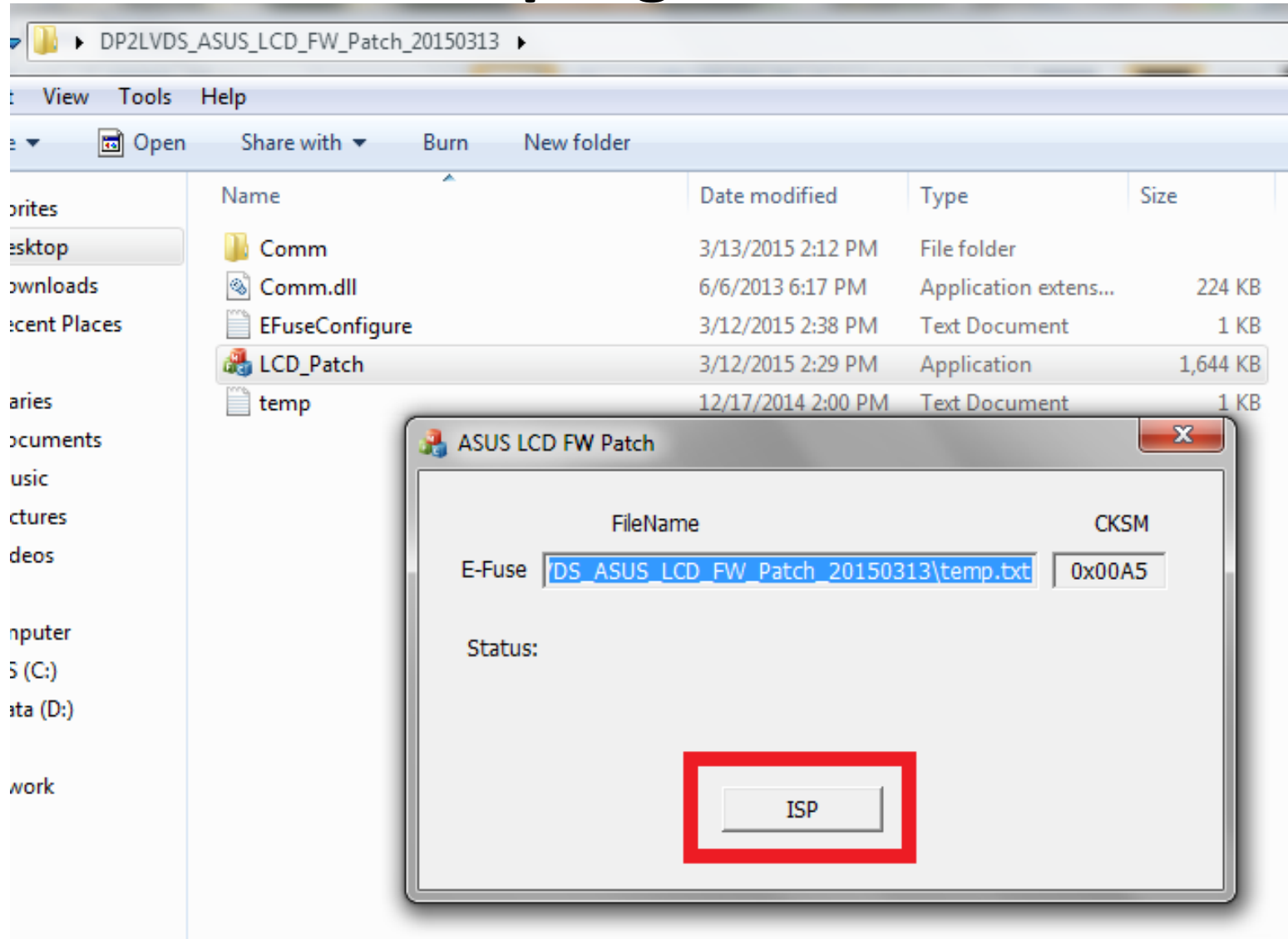
Please execute follow-up steps under the folder



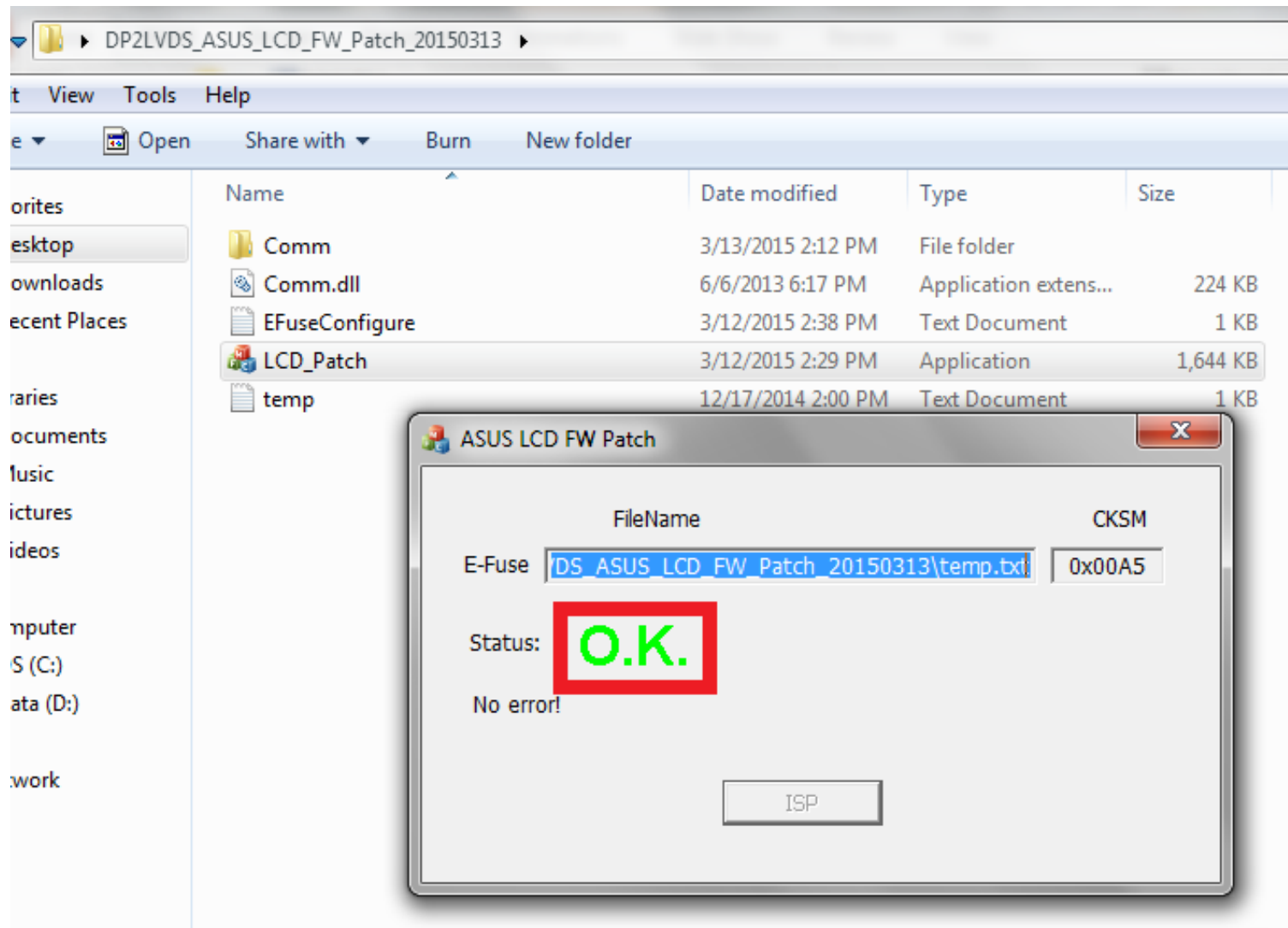
Please click the program “LCD_Patch”



Click the “ISP” button to execute the program



When you see “O.K.” on the screen, it means the FW is updated.



THANK YOU

ASUS[®] Inspiring Innovation • Persistent Perfection