

ASUS ProArt StudioBook Pro16

Repair Manual

COPYRIGHT INFORMATION

No part of this manual, including the products and software described in it, may be reproduced, transmitted, transcribed, stored in a retrieval system, or translated into any language in any form or by any means, except documentation kept by the purchaser for backup purposes, without the express written permission of ASUSTeK COMPUTER INC. ("ASUS").

ASUS PROVIDES THIS MANUAL "AS IS" WITHOUT WARRANTY OF ANY KIND, EITHER EXPRESS OR IMPLIED, INCLUDING BUT NOT LIMITED TO THE IMPLIED WARRANTIES OR CONDITIONS OF MERCHANTABILITY OR FITNESS FOR A PARTICULAR PURPOSE. IN NO EVENT SHALL ASUS, ITS DIRECTORS, OFFICERS, EMPLOYEES OR AGENTS BE LIABLE FOR ANY INDIRECT, SPECIAL, INCIDENTAL, OR CONSEQUENTIAL DAMAGES (INCLUDING DAMAGES FOR LOSS OF PROFITS, LOSS OF BUSINESS, LOSS OF USE OR DATA, INTERRUPTION OF BUSINESS AND THE LIKE), EVEN IF ASUS HAS BEEN ADVISED OF THE POSSIBILITY OF SUCH DAMAGES ARISING FROM ANY DEFECT OR ERROR IN THIS MANUAL OR PRODUCT.

Products and corporate names appearing in this manual may or may not be registered trademarks or copyrights of their respective companies, and are used only for identification or explanation and to the owners' benefit, without intent to infringe.

SPECIFICATIONS AND INFORMATION CONTAINED IN THIS MANUAL ARE FURNISHED FOR INFORMATIONAL USE ONLY, AND ARE SUBJECT TO CHANGE AT ANY TIME WITHOUT NOTICE, AND SHOULD NOT BE CONSTRUED AS A COMMITMENT BY ASUS. ASUS ASSUMES NO RESPONSIBILITY OR LIABILITY FOR ANY ERRORS OR INACCURACIES THAT MAY APPEAR IN THIS MANUAL, INCLUDING THE PRODUCTS AND SOFTWARE DESCRIBED IN IT.

Copyright © 2024 ASUSTeK COMPUTER INC. All Rights Reserved.

LIMITATION OF LIABILITY

Circumstances may arise where because of a default on ASUS' part or other liability, you are entitled to recover damages from ASUS. In each such instance, regardless of the basis on which you are entitled to claim damages from ASUS, ASUS is liable for no more than damages for bodily injury (including death) and damage to real property and tangible personal property; or any other actual and direct damages resulted from omission or failure of performing legal duties under this Warranty Statement, up to the listed contract price of each product.

ASUS will only be responsible for or indemnify you for loss, damages or claims based in contract, tort or infringement under this Warranty Statement.

This limit also applies to ASUS' suppliers and its reseller. It is the maximum for which ASUS, its suppliers, and your reseller are collectively responsible.

UNDER NO CIRCUMSTANCES IS ASUS LIABLE FOR ANY OF THE FOLLOWING: (1) THIRD-PARTY CLAIMS AGAINST YOU FOR DAMAGES; (2) LOSS OF, OR DAMAGE TO, YOUR RECORDS OR DATA; OR (3) SPECIAL, INCIDENTAL, OR INDIRECT DAMAGES OR FOR ANY ECONOMIC CONSEQUENTIAL DAMAGES (INCLUDING LOST PROFITS OR SAVINGS), EVEN IF ASUS, ITS SUPPLIERS OR YOUR RESELLER IS INFORMED OF THEIR POSSIBILITY.

SERVICE AND SUPPORT

Visit our multi-language website at <https://www.asus.com/support/>.

MyASUS offers a variety of support features including troubleshooting, products performance optimization, ASUS software integration, and helps you to organize personal desktop and increase storage space. For more details, please visit <https://www.asus.com/support/FAQ/1038301/>.

- **ASUS is not responsible for direct, indirect, intentional or unintentional damages resulting from improper installation and operation.**
- **Carefully read through this Service Guide for a look at various components of the device before performing any service and repairs.**
- To provide the best service, we have provided the below information for technicians from distributors and resellers to perform the complete device disassembly and assembly. Before performing the procedures, please be sure to read through the overview in this service guide for component overview to avoid any unwarranted damages to the device hardware.
- Due to sales policy difference, the components might have different specifications on the same series product, please refer to E-manual by model.

Safety precautions

- Before handling components, use a grounded wrist strap or touch a safely grounded object to avoid damaging them due to static electricity.
- Keep liquids or moisture away from your device to avoid short circuits.
- Remove rings, watches, and any other metal objects from your hands.
- Hold components by the edges to avoid touching the ICs.
- Properly install all components before connecting the AC power.
- Do not use power adapters or batteries from other devices to reduce the risk of injury to persons due to fire or explosion.
Use only certified power adapters or batteries supplied by the manufacturer or authorized retailers.
- Detach all clips or flaps before removing cables to prevent damage.
- Use the correct screw models on your device to prevent damage.
- Fully remove all adhesive residue after removing and before installing any components.
- Photograph the appearance of cables, cable routing, connectors, and screws for later reference before proceeding with each step.

- Read the entire manual before starting any service procedures and follow all instructions.
- Back up the data on your device.
- Place your device on a clean and stable surface.
- Turn off your device.
- Disconnect all connected peripherals and cables.
- Disconnect all power cables and remove the battery pack (if applicable).

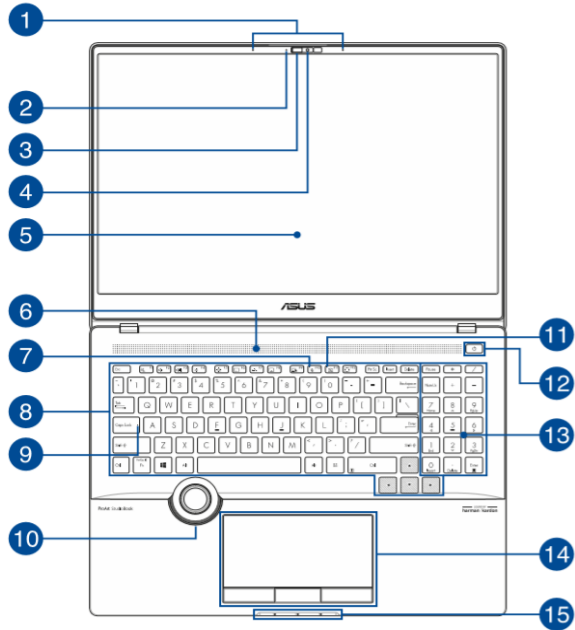
IMPORTANT!

- If you are uncertain about performing the described service procedures, stop and contact an authorized service center for assistance.
- Purchase replacement components from authorized retailers of this device to ensure maximum compatibility and reliability.

NOTE

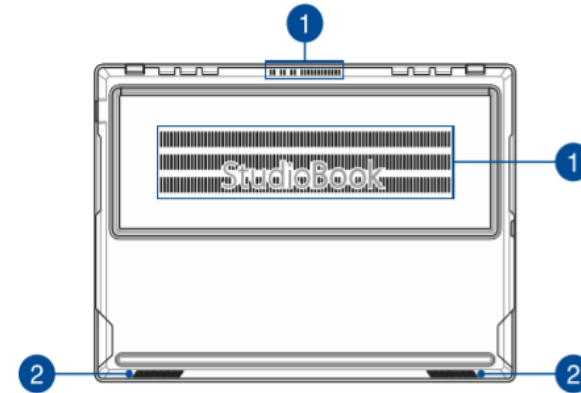
- The illustration are for reference only.
- The service procedures described in this document depend on the model configuration and may not reflect the entire servicing process. To service components that are not covered in this document, please visit an authorized service center for further assistance.
- Keep all adhesive tape, insulating materials, screws, and other removable items in a safe place until the service procedure is completed, as they may be needed during reassembling.

Top View



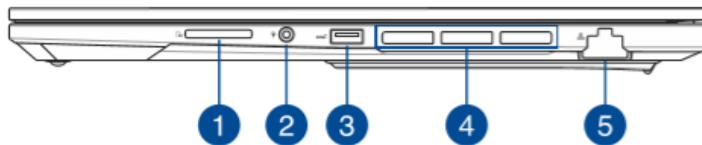
- ① Array microphones
- ② Camera indicator
- ③ Webcam shield
- ④ Camera (IR Camera)
- ⑤ Display panel
- ⑥ Air vents
- ⑦ Microphones indicator
- ⑧ Keyboard
- ⑨ Capital lock indicator
- ⑩ ASUS Dial
- ⑪ Camera off indicator
- ⑫ Power button
- ⑬ Numeric keypad
- ⑭ Touchpad with buttons
- ⑮ Status indicators

Bottom View



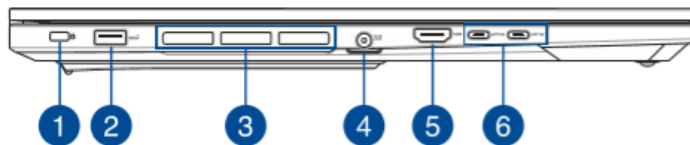
- ① Air vents
- ② Audio speakers

Right View



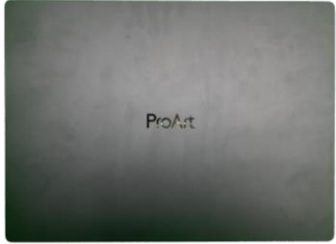
- ① Memory card reader
- ② Headphone/Headset/Microphone jack
- ③ USB 3.2Gen 2 port
- ④ Air vents
- ⑤ LAN port

Left View



- ① Kensington® security slot B 2.0 port
- ② USB 3.2Gen 2 port
- ③ Air vent
- ④ Power(DC) input port
- ⑤ HDMI output port

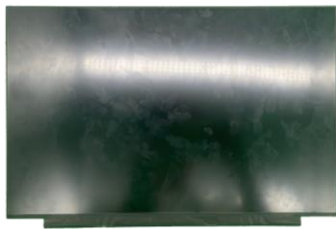
◆ LCD COVER



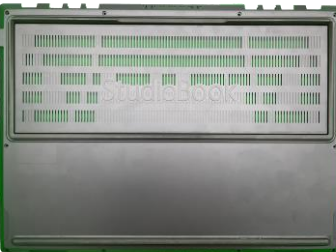
◆ LCD BEZEL



◆ 16.0" LCD PANEL



◆ BOTTOM CASE



◆ KEYBOARD MODULE



◆ MAIN BOARD



◆ FPC_USB



◆ BATTERY



◆ THERMAL



◆ CMOS BOARD



◆ ENCODER FFC



◆ CAMERA



◆ SSD



◆ MEMORY



◆ FP POWER BUTTON



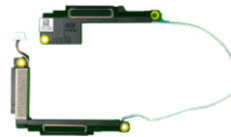
◆ EDP CABLE



◆ FPC_USB



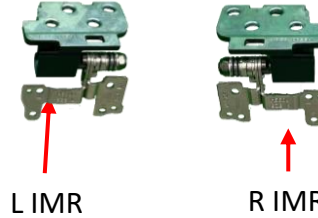
◆ SPEAKER



◆ WIFI MAIN ANTENNA



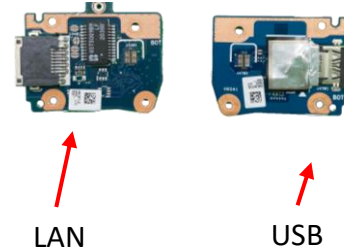
◆ HINGE



◆ LED BOARD



◆ IO BOARD



◆ FPC_CAM



◆ COMS CABLE



◆ DIGITAL MICROPHONE *2PCS



◆ LCD COVER



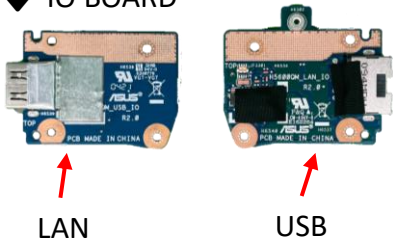
◆ LCD BEZEL



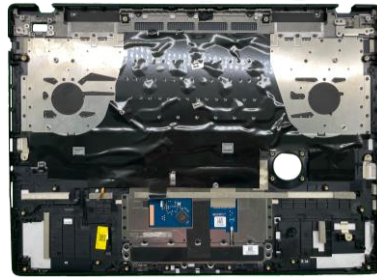
◆ 16.0" LCD PANEL



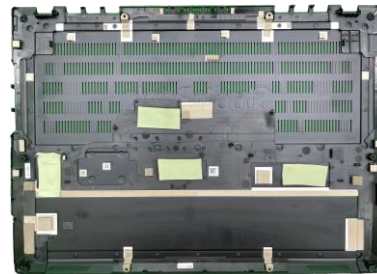
◆ IO BOARD



◆ KEYBOARD MODULE



◆ BOTTOM CASE



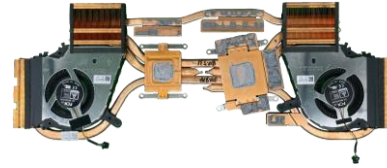
◆ MAIN BOARD



◆ ENCODER SWITCH H9.8 W/O LED



◆ THERMAL



◆ CMOS BOARD



◆ LED BOARD



This chapter describes disassembly and assembly (Assemble document please look up from the last page), please follow the information provided in this section to perform the complete disassembly procedure.

◆ Precautions:

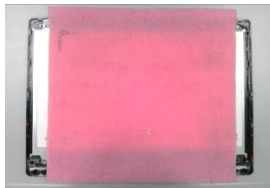
Before you perform any service or repair on the notebook, please pay special attention to the cautions prevent any damages to the notebook.

1. Be sure that the notebook is powered down.
2. Before disassembling any part, please disconnect all power source. ex: AC plug/Battery connector/Power protect screw etc.

3. Remove all rings, watches and any other metal objects from your hands.



4. Always wear a ground strap on your hand to protect the notebook from static discharge.
5. Please refer to “ANSI ESD S20.20” about ESD protection measure.
6. Put the disassembled parts in the functional PE BAG to avoid any damages of the A/B/C/D part.



7. The maintenance environment temperature is 20-30 °C and humidity is 40% - 70%.
8. To avoid scratching on the surface of machine; please use anti-static and soft materials to put on desk in repair environment as below photo.



9. Screw Appearance Criteria:

If the screws have the following damaged appearance, please do not use.

- a. Shape deformed.
- b. Damaged head – unable to drive in or the stripped screw.
- c. Damaged unable to securely tighten.
- d. Paint scratched off.
- e. Rusty



10. The following chapter includes all part numbers mentioned in service guide are used for reference only, actual part name depends on different SKU, if you need the exact part number for ordering, please refer to the Orderbook.
11. Due to sales policy difference, the components may have different specifications on the same model. Please note that all pictures and components shown on Service Guide are for disassembly/assembly description purpose only, so please refer to the actual product for disassemble/assemble.

Please prepare and select the appropriate tools to disassemble/assemble for the H5600QM_QR notebook.

◆ Screwdriver

Please accord to different screw specification to choose different screwdriver and head.

#1 



◆ Plastic Blade



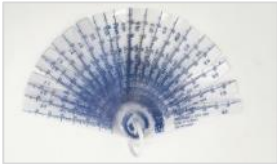
◆ Plastic Tweezers

Use a pair of tweezers to remove/insert/tidy cables.



◆ Thickness Gauge

Thickness compass specification 0.05mm-1.5mm. Use it to measure the gap.



◆ Magnetism Board

Suggest local buy magnetism board to place screw, avoid mix different type screw to cause assembly damage.



◆ Alcohol 95%



◆ Glove



◆ Dust-free Cloth

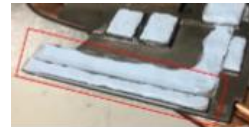


◆ Thermal) Pad

G500 Thermal Grease







◆ FCR-AS Thermal Grease

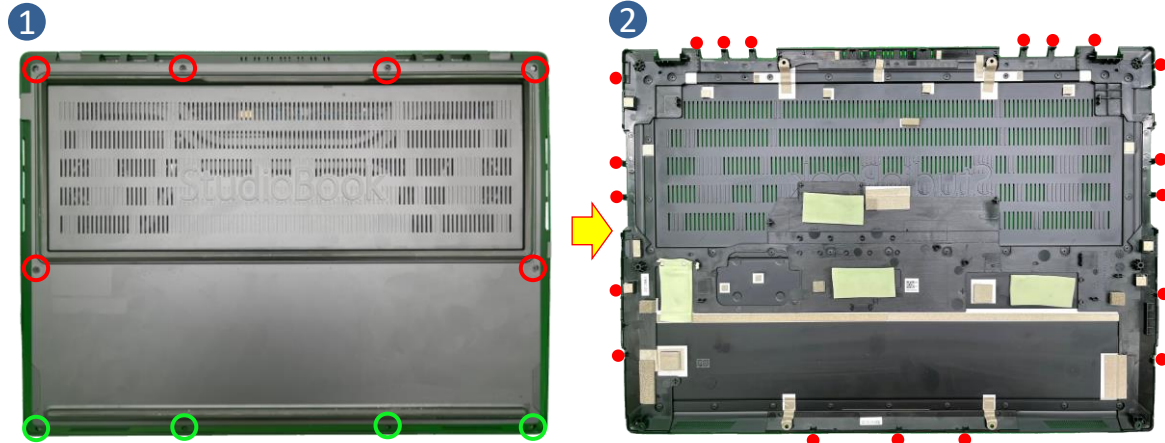


Disassembly Notice

Step 1 : Remove screws *10pcs.

Step 2 : Use plastic blade to pry the Bottom case.

Screws	QTY	Spec	Torque (kgf-cm)
 	4	SCREW M2*4.5L(4,0.8) (K) #1	2±0.2
 	6	SCREW M2*9L(4,0.75) (K)	3±0.2

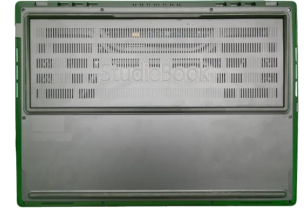


⚠ To avoid the bottom case hook, don't insert plastic blade in each red circle.

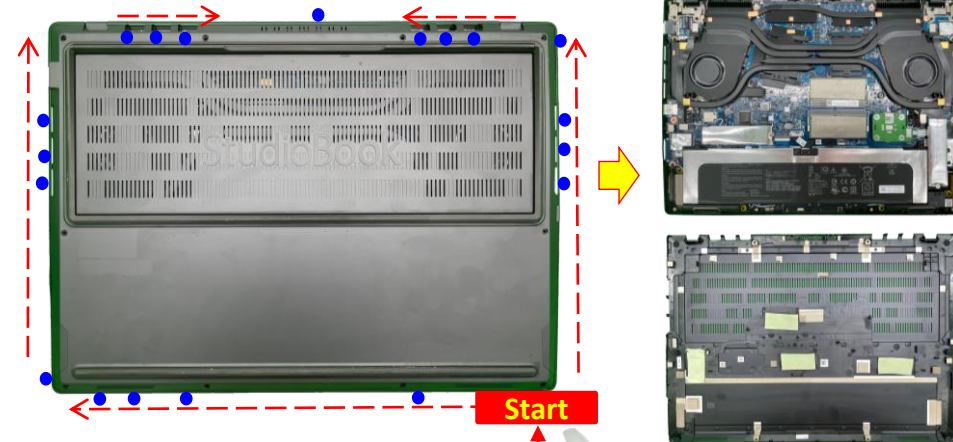
Assembly Notice

⚠ For BOTTOM CASE assembly

Sky side



Ground side



⚠ Please follow above arrow direction with using plastic blade to pry bottom case in each blue circle location. (To avoid the bottom case hook, please prying at each blue circle location.)

Disassembly Notice

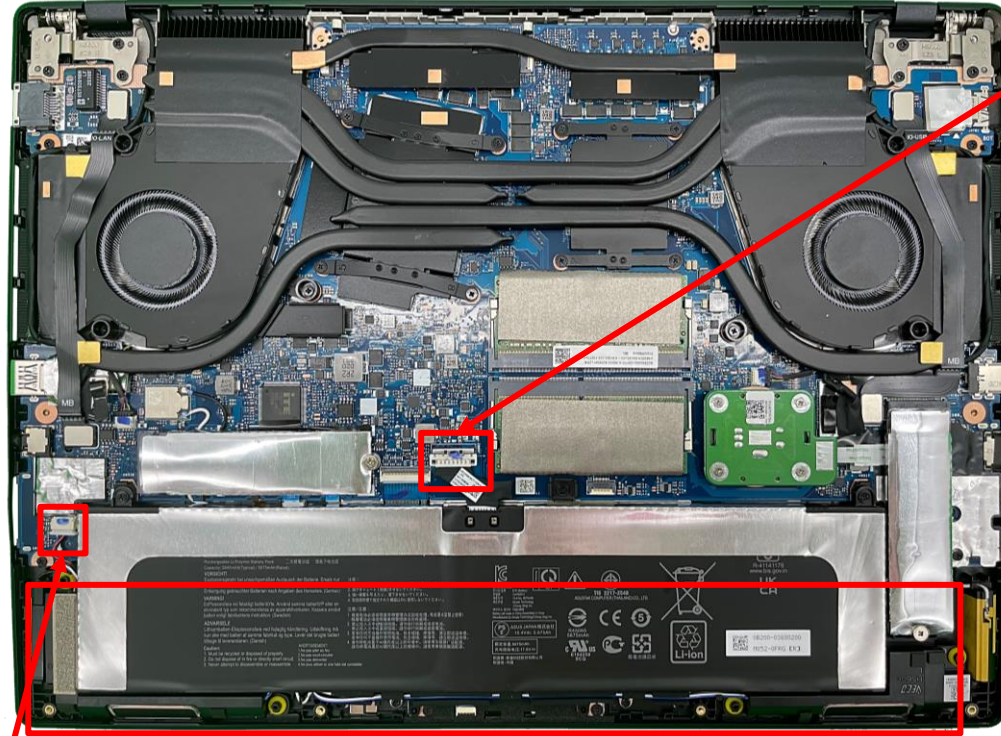
Please be sure to pull out adapter and disconnect the battery. 

 Before disassembly battery connector, please be sure to pull out adapter and disconnect the battery more than ten seconds in order to IC damage.

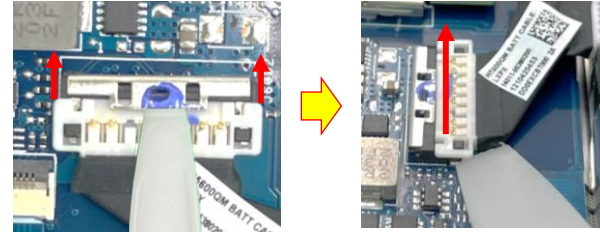
Step 1 : Disconnect the battery connector.

Step 2 : Disconnect the SPEAKER connector.

Step 3 : Remove SPEAKER.



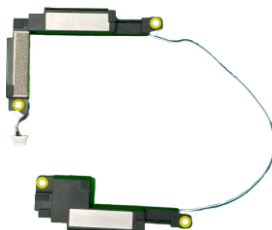
1 Disconnect



2 Disconnect



3 Remove



Assembly Notice

 For Speaker assembly, please follow the mark below to tidy cable.



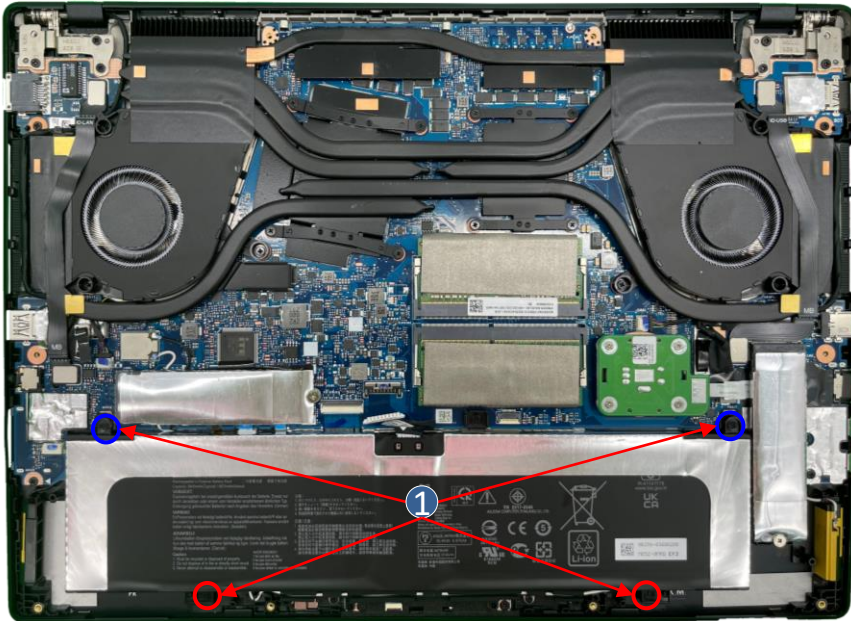
Disassembly Notice





Please be sure to pull out adapter and disconnect the battery. 

 Before disassembly battery connector, please be sure to pull out adapter and disconnect the battery more than ten seconds in order to IC damage.

Step 1 : Remove screws *4pcs.


Step 2 : Remove BATTERY.

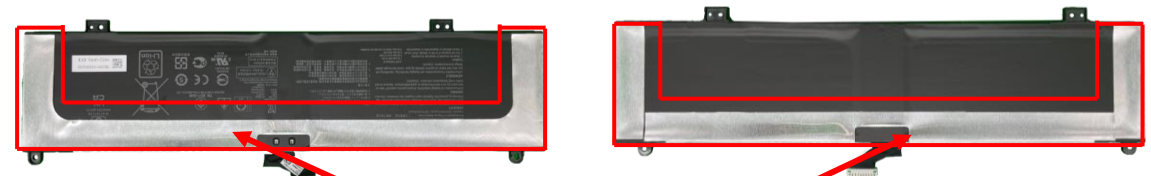


Screws	QTY	Spec	Torque(kgf-cm)
 	2	SCREW M2*4.5L(4,0.8) (K) #1	2±0.2
 	2	SCREW M2*6L(K,D4.6)(K) #1	2±0.2

2 Remove

Assembly Notice

 For Battery assembly, when you replace a new battery, please remember to paste the BATT AL FOIL 1pcs.


**BATT AL FOIL**

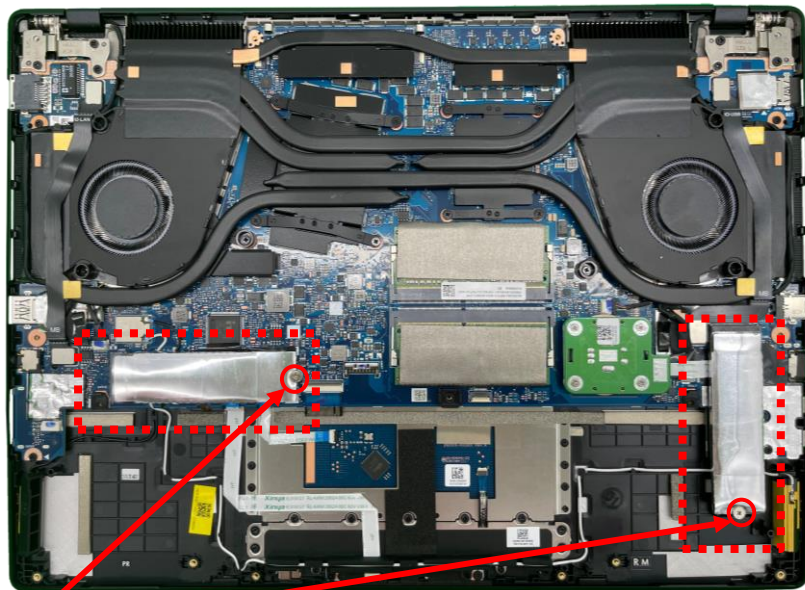
Disassembly Notice

Please be sure to pull out adapter and disconnect the battery. 

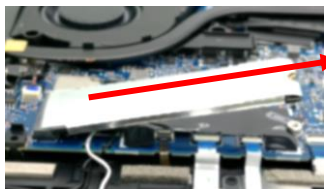
Step 1 : Remove the screws *2pcs and remove the SSD *2pcs (red mark).

Step 2 : Remove THM SSD AL FOIL and SSD GS from the SSD.

Screws	QTY	Spec	Torque (kgf-cm)
	2	SCREW M2*2.75L+0.75(5.6,0.9)(K)	2.0±0.2

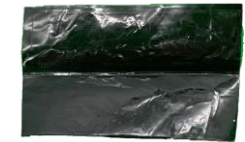
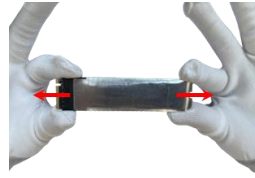


1 Remove



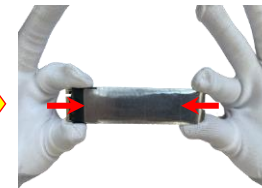
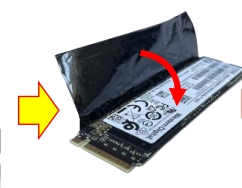
(SSD *2pcs)

2 Remove



Assembly Notice

 When you replace a new SSD ,please remember to paste the SSD GS and assemble the SSD AL FOIL.

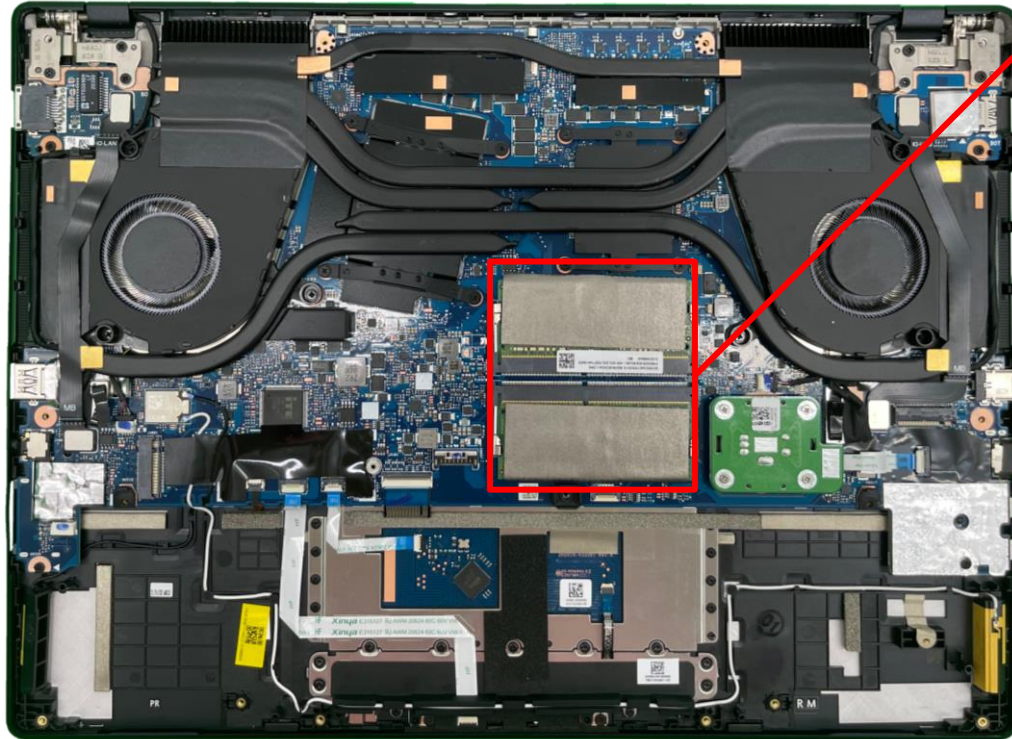


Disassembly Notice

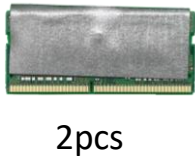
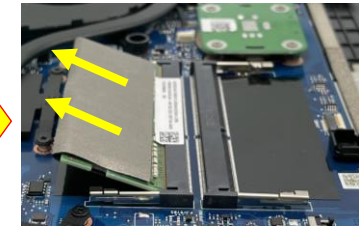
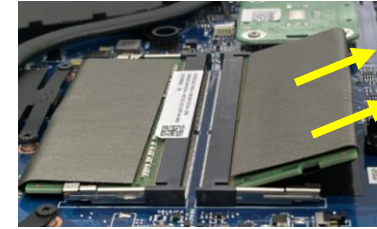
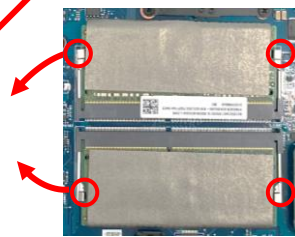
Please be sure to pull out adapter and disconnect the battery. 

Step 1 : Remove the MEMORY *2pcs (red mark).

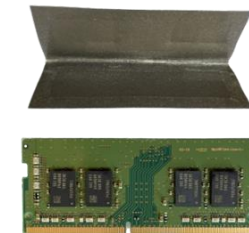
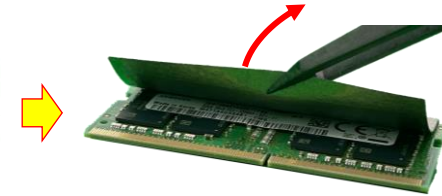
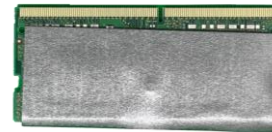
Step 2 : Remove the ABSORBER from the MEMORY .



1 Remove

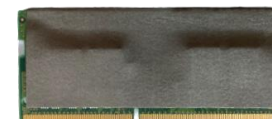
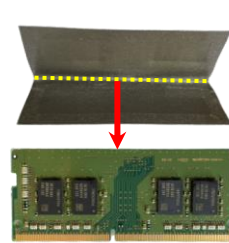


2 Remove



Assembly Notice

 For MEMORY assembly, When you replace a new MEMORY please remember to paste the ABSORBER.



Disassembly Notice

Please be sure to pull out adapter and disconnect the battery.

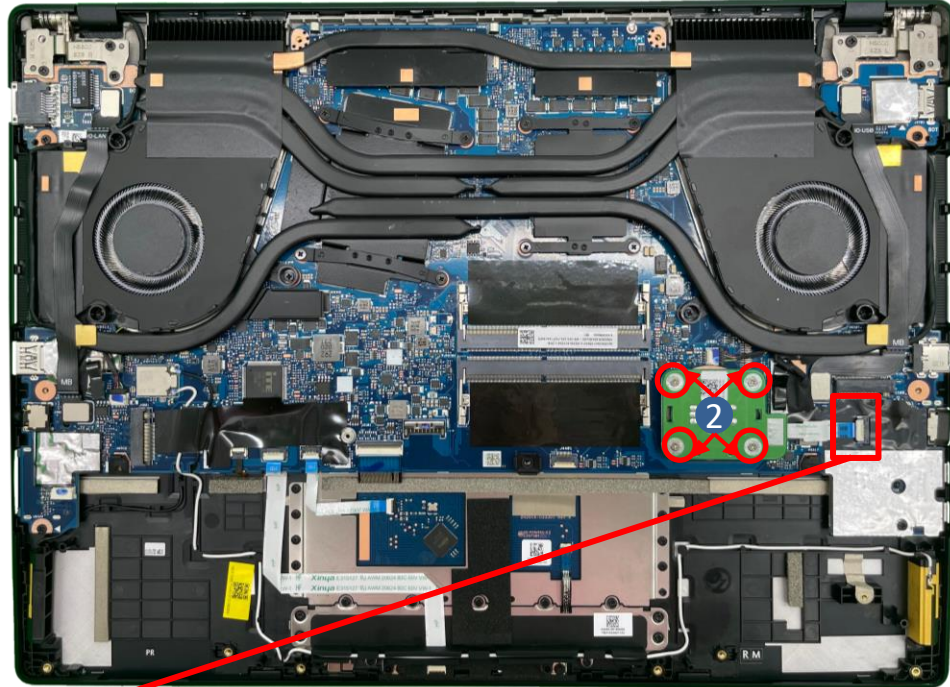
Step 1 : Disconnect the ENCODER SWITCH FFC from the MB (red mark).

Step 2 : Remove the screws *4pcs and remove the ENCODER SWITCH ASSY.

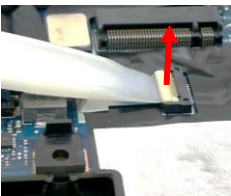
Step 3 : Disconnect the ENCODER SWITCH FFC from the ENCODER SWITCH ASSY.

Step 4 : Disassemble the ENCODER SWITCH ASSY.

Screws	QTY	Spec	Torque (kgf-cm)
	4	SCREW M2*9.2L(3.6,0.5) (K) #1	2.0±0.2



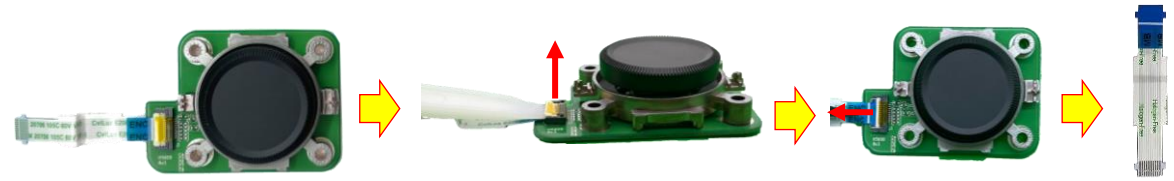
1 Disconnect



2 Remove



3 Disconnect



4 Disassemble



Assembly Notice

For ENCODER SWITCH assembly, please follow the below step.

1. Use the Dust-free Cloth (with alcohol) to clear the black plastic part of ENCODER SWITCH.



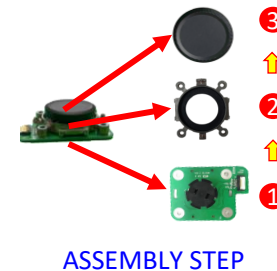
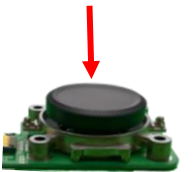
2. Assemble the KNOB MOD HOLDER.



3. Tear off the release paper of KNOB CAP ASM to assemble it.



4. Please press KNOB CAP ASM 5 seconds after assembly, and then do not pull KNOB CAP ASM during 24 hours to make sure the KNOB CAP and the ENCODER SWITCH MODULE are inseparable and firm.



If the black plastic part of ENCODER SWITCH is damaged when disassemble KNOB CAP ASM, please change a new ENCODER SWITCH.



Disassembly Notice

Please be sure to pull out adapter and disconnect the battery.

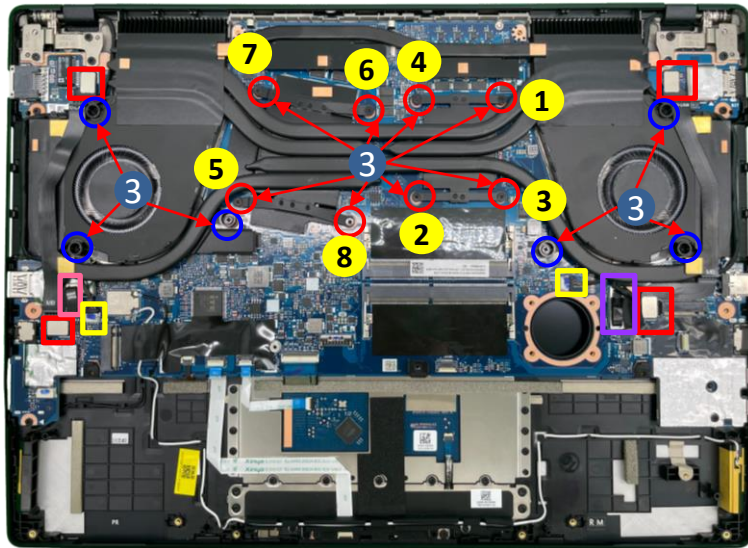
Step 1 : Disconnect the FPC_LAN and FPC_USB (red mark).

Step 2 : Disconnect the EDP CABLE (purple mark) and COMS CABLE (pink mark) and FAN connector (yellow mark) from MB.

Step 3 : Remove screws *6pcs(blue mark) on the fan, remove screws *8pcs on the thermal (red mark).

Step 4 : Remove the THERMAL (with fan).

Recommend that the force point is at green block, and pull up thermal module to take it out. Do not pull up at yellow block and also notice the thermal pipe should not have deformation.



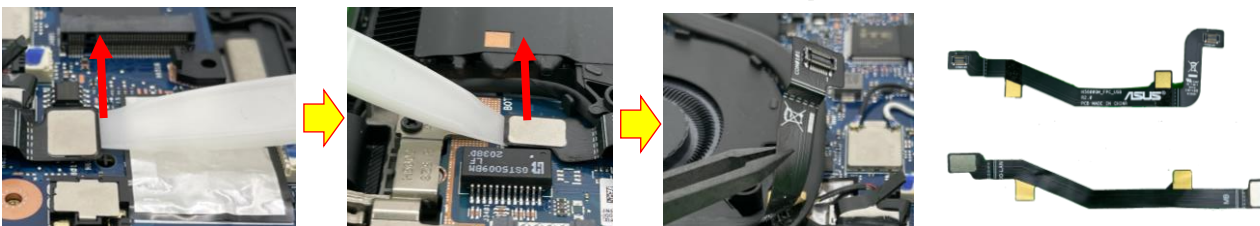
2 Disconnect EDP CABLE&COMS CABLE (purple & pink mark)



4 Remove



1 Disconnect (red mark)



Screws	QTY	Spec	Torque (kgf-cm)
	6	SCREW M2*4.5L(4,0.8) (K) #1	2.0±0.2
	8	SCREW M2*2.3L(4.5,0.5) (K) #1	2.0±0.2

Assembly Notice

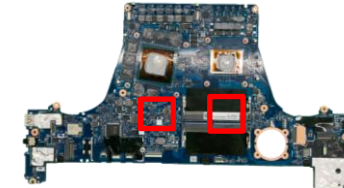
Step-1

■ MB Location:[CPU][GPU]

Material:

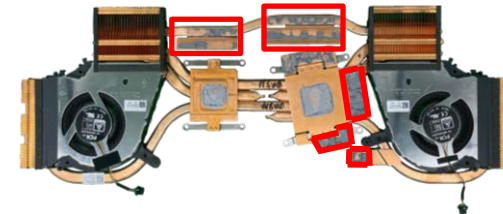
Main (GA500 Grease)

Substitute (PSX Thermal pad)



■ Location:[VRAM OF THERMAL]

Material:FCR-AS Thermal Grease




Step-2

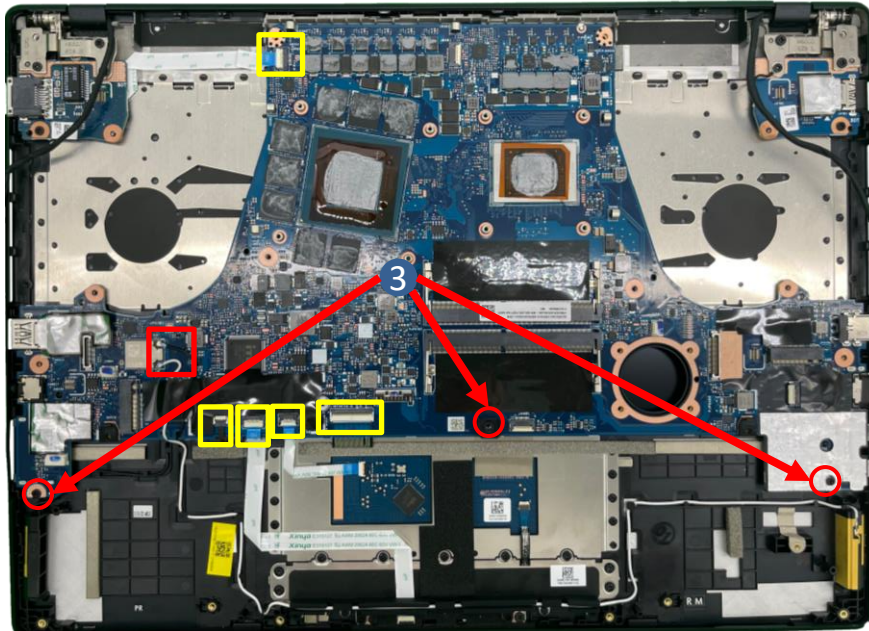
Please follow the screws numbers to lock screws *8pcs.

Disassembly Notice

Please be sure to pull out adapter and disconnect the battery.

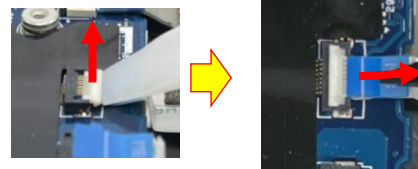
- Step 1 : Disconnect (yellow mark) connector *5pcs from MB.
- Step 2 : Disconnect WIFI ANTENNA connector(red mark).
- Step 3 : Remove screws *3pcs.
- Step 4 : Remove MB.

Screws	QTY	Spec	Torque (kgf-cm)
	3	SCREW M2*4.5L(4,0.8) (K) #1	2.0±0.2

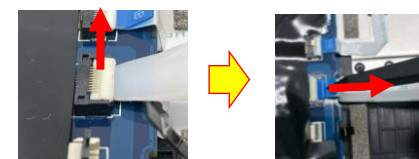


① Disconnect (yellow mark)

TP connector



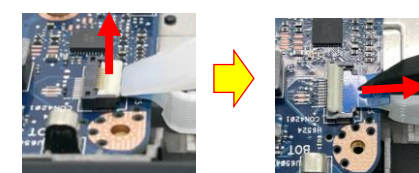
LED connector



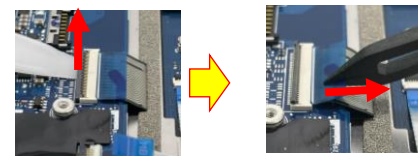
BL connector



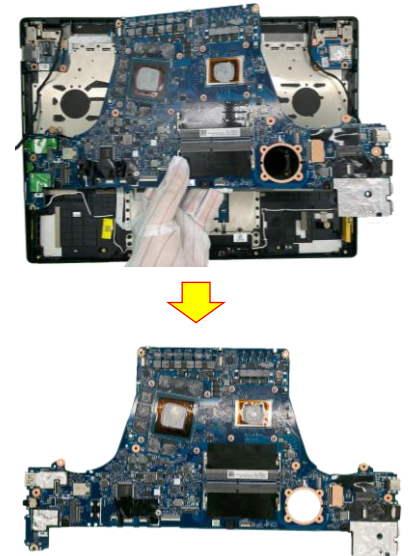
FP connector



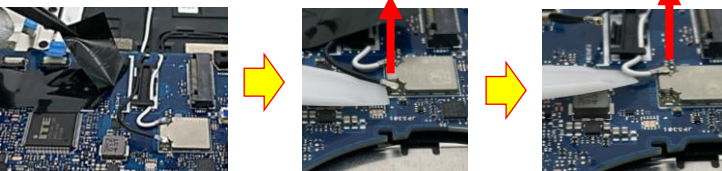
Keyboard connector



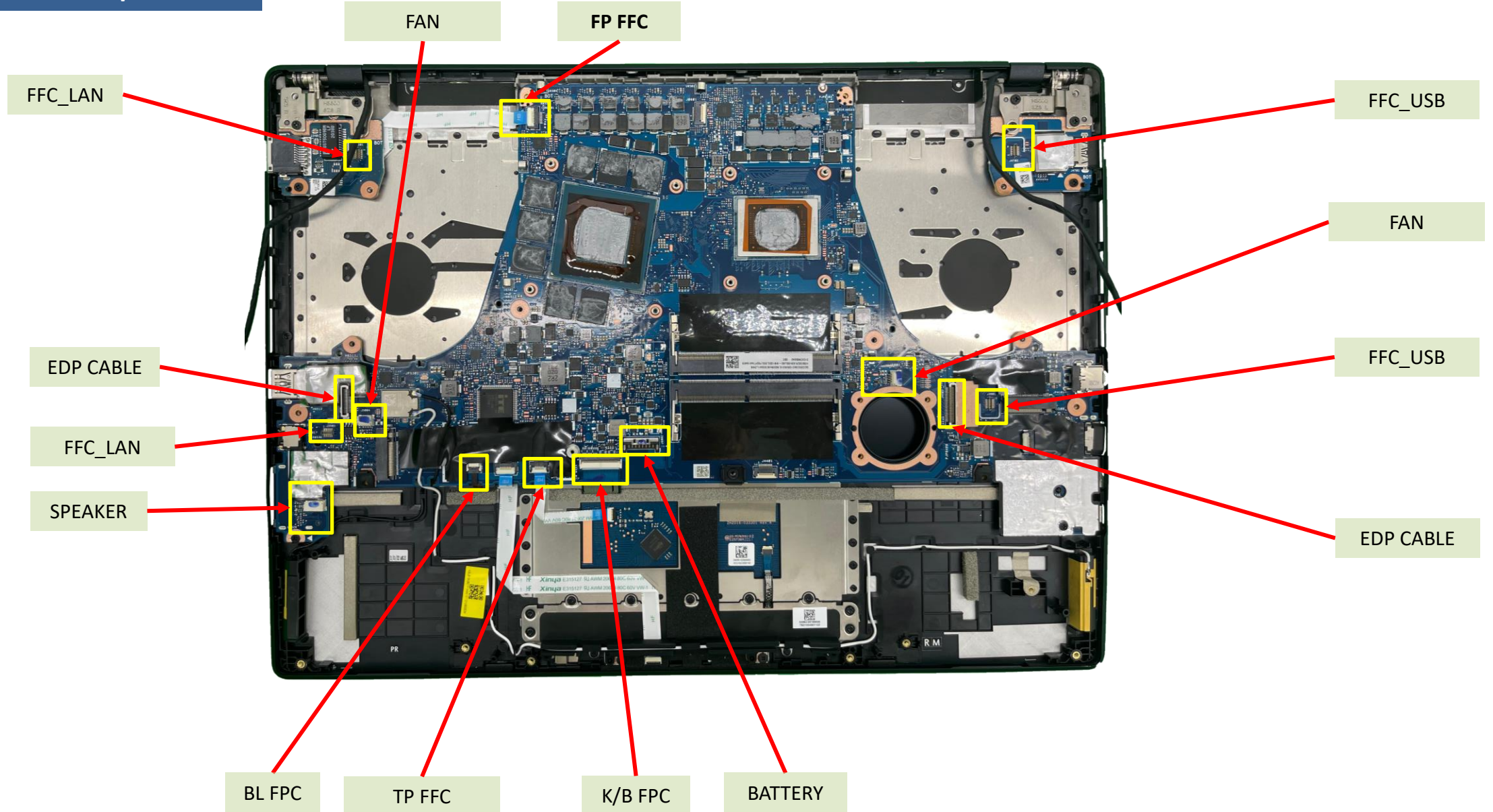
④ Remove MB



② Disconnect (red mark)



Mainboard connector placement



Materials on mainboard

H5600QM GPU CAPTON

H5600QM CPU CAPTON

G531GW PCB DIMM MYLAR

H5600QM MB SSD MYLAR

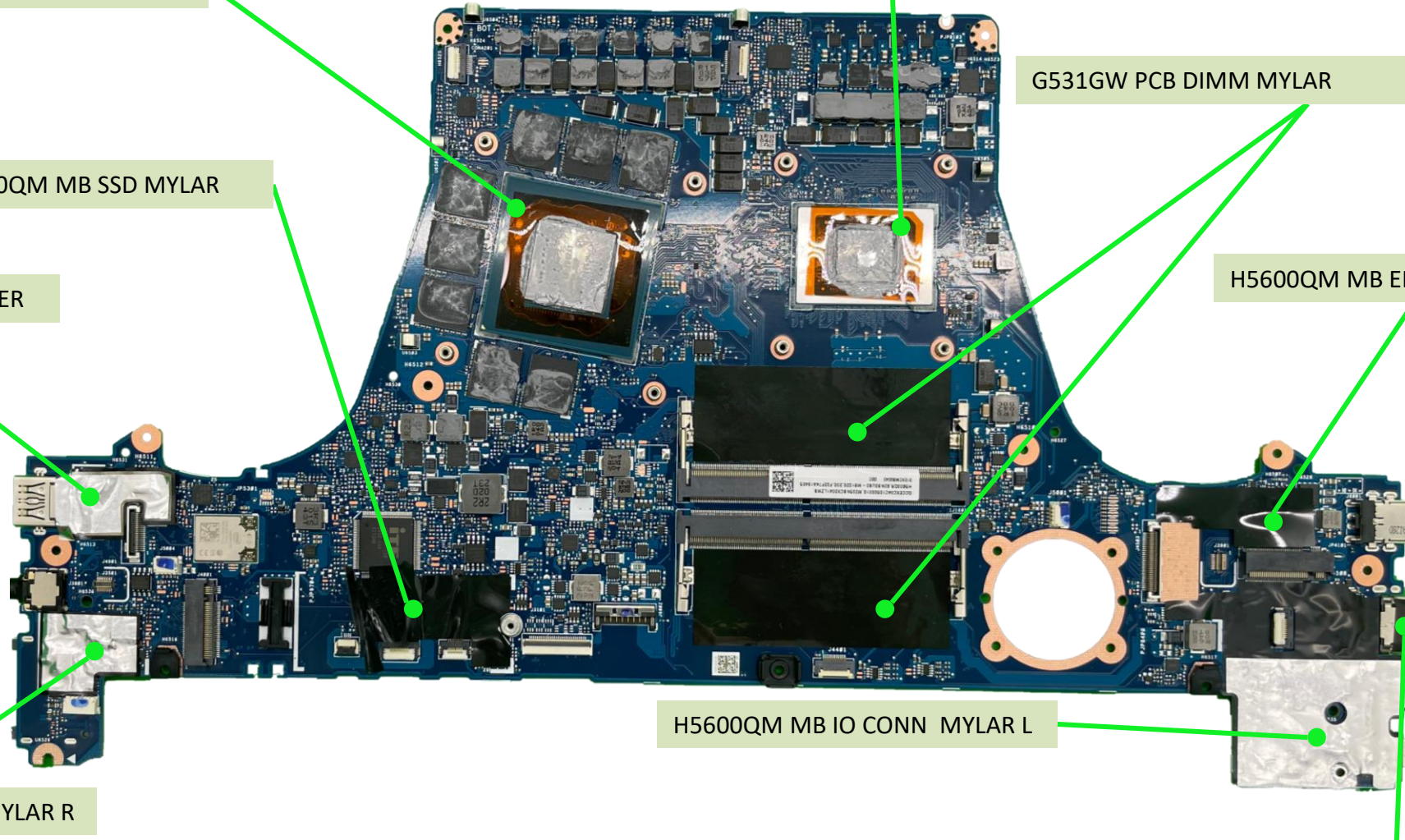
H5600QM MB USB3 ABSORBER

H5600QM MB EDP CABLE MYLAR

H5600QM MB IO CONN MYLAR L

H5600QM MB IO CONN MYLAR R

H5600QM USB BLACK CONDUCTIVE TAPE



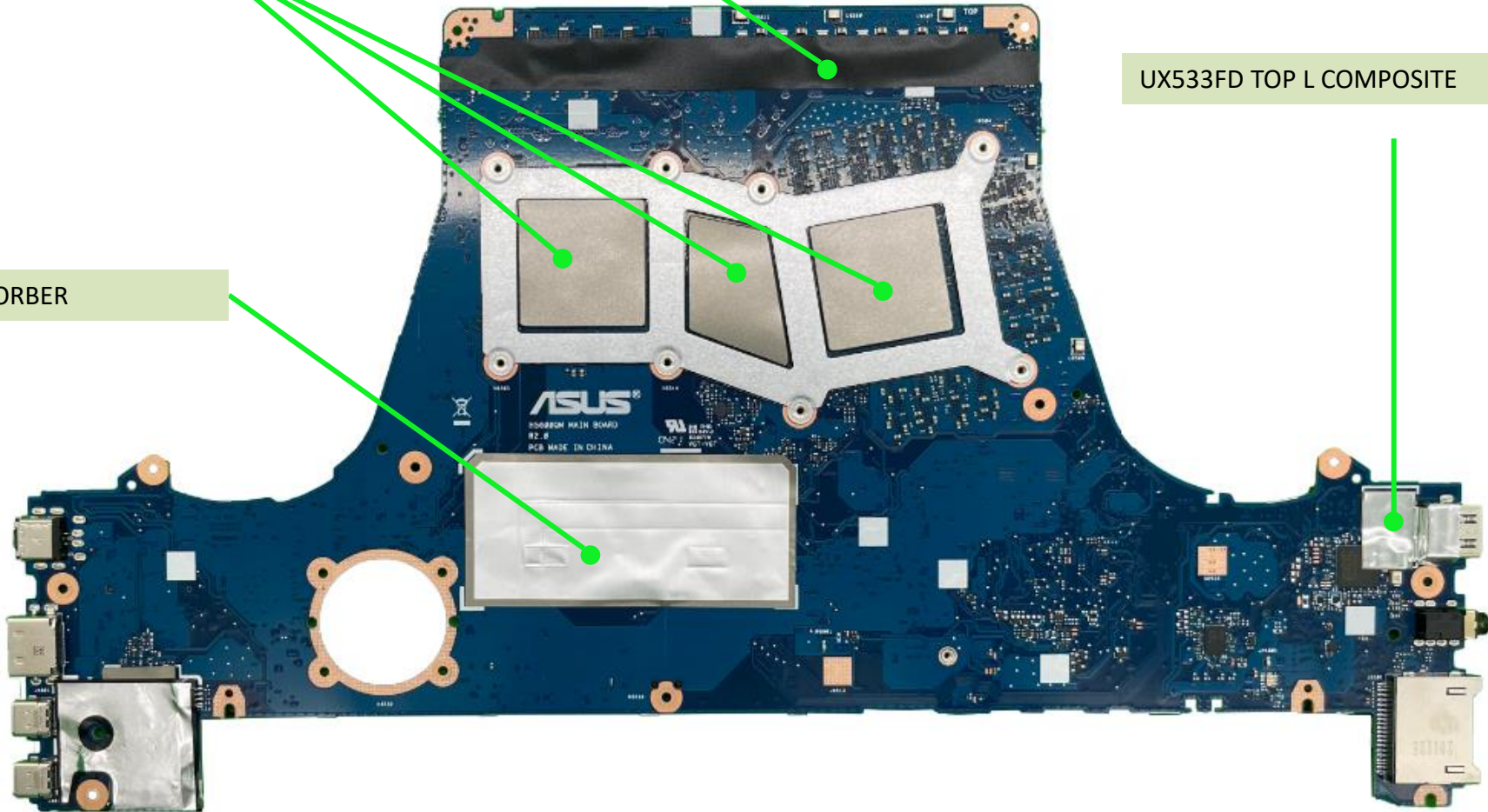
Materials on mainboard

H5600QM MB TOP FILM MYLAR

H5600QM MB ABSORBER COMBINE

UX533FD TOP L COMPOSITE

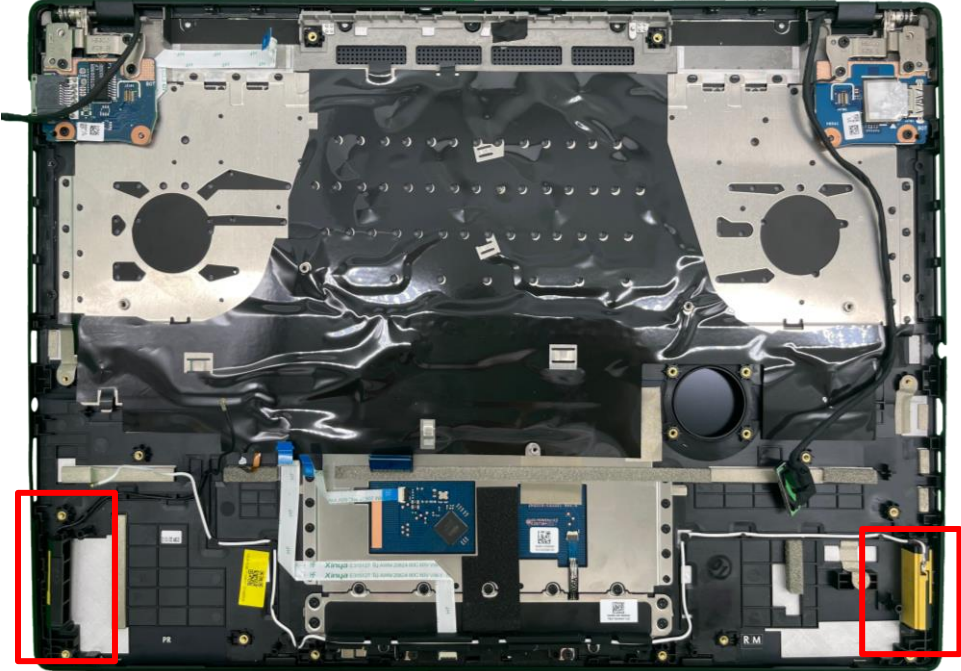
UX305LA DDR TRACE ABSORBER



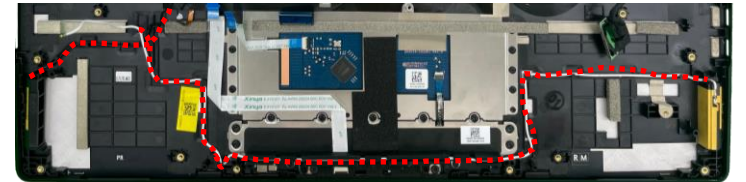
Disassembly Notice

Please be sure to pull out adapter and disconnect the battery. 

Step 1 : Remove WIFI ANTENNA.

**Assembly Notice**

 For WIFI MAIN ANTENNA assembly, please follow the mark below to tidy cable

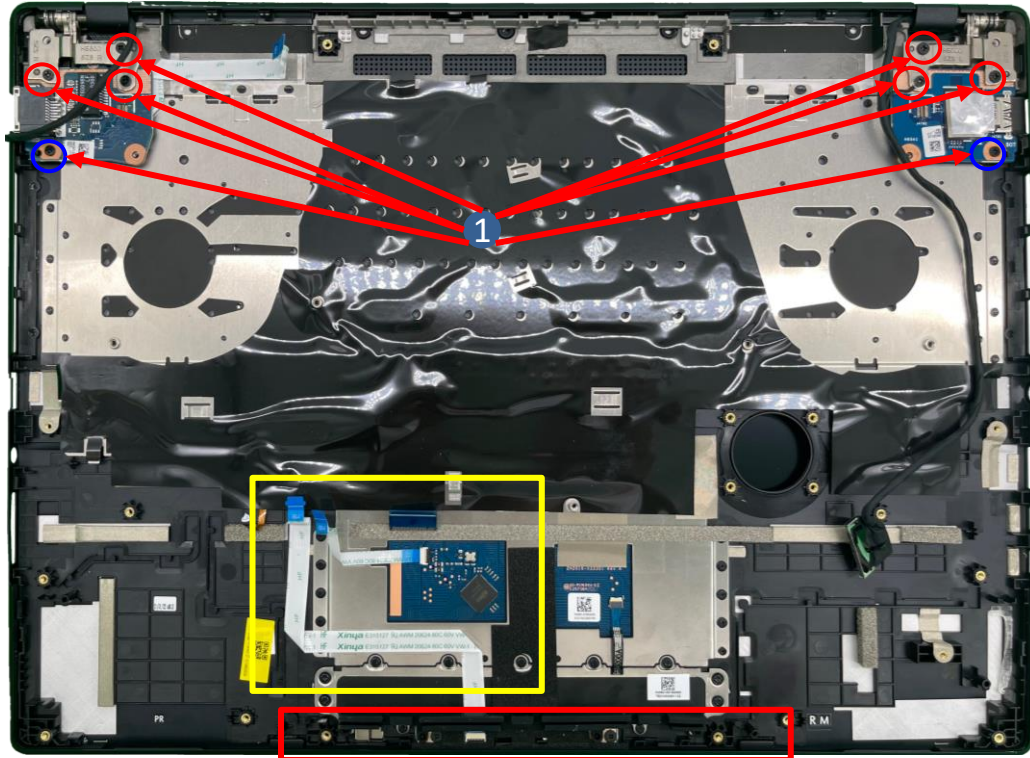
**1 Remove**

Disassembly Notice

Please be sure to pull out adapter and disconnect the battery.

- Step 1 : Remove screws *6pcs on the hinge and screws *2pcs on the IO BOARD.
 Step 2 : Remove IO BOARD.
 Step 3 : Disconnect and remove all FFC *2pcs (yellow mark).
 Step 4 : Remove the SPEAKER CABLE RUBBER (red mark).
 Step 5 : Remove screws *2pcs and remove the LED BOARD then tear off the SPONGE from the LED BOARD.

Screws	QTY	Spec	Torque (kgf-cm)
	6	SCREW M2.5*6L (4,0.8) (K) #1	3.0±0.2
	2	SCREW M2*4.5L(4,0.8) (K) #1	2.0±0.2



3 Disconnect and Remove LED FFC



TP FFC

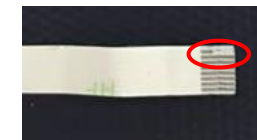


5 Remove



Assembly Notice

If FFC is damage during disassembly, please replace new one. Here are some samples of FFC damage:



2 Remove



LAN

4 Remove



USB



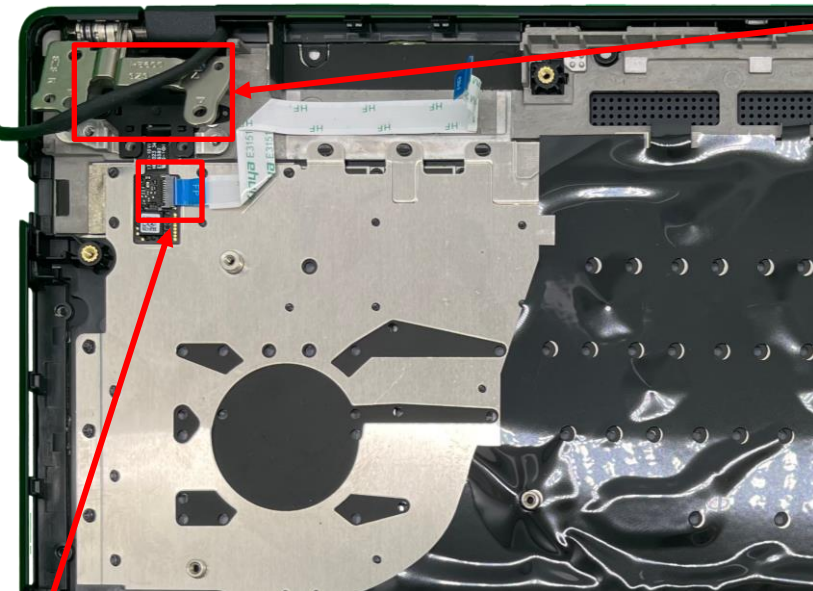
Disassembly Notice

Please be sure to pull out adapter and disconnect the battery.

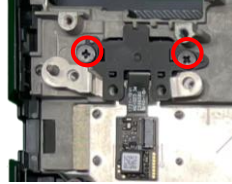
Step 1 : Disconnect and remove the FP FFC.

Step 2 : Remove screws *2pcs on the FP POWER BUTTON.

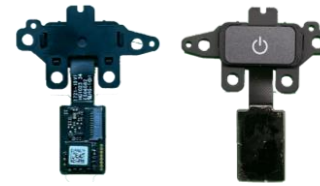
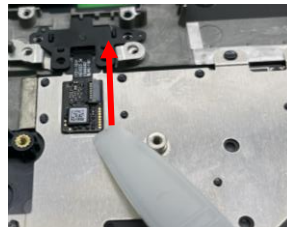
Step 3 : Remove the FP POWER BUTTON.



2 Remove



3 Remove



Screws	QTY	Spec	Torque (kgf-cm)
	2	SCREW M2*2.3L(4.5,0.5) (K) #1	2.0±0.2

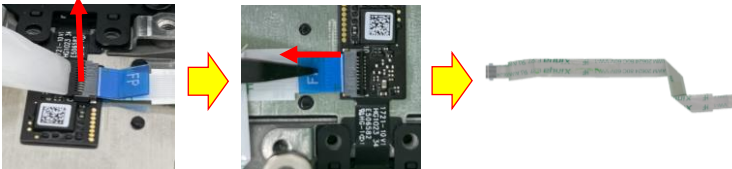
Assembly Notice

If FFC is damage during disassembly, please replace new one. Here are some samples of FFC damage:



1 Disconnect and Remove

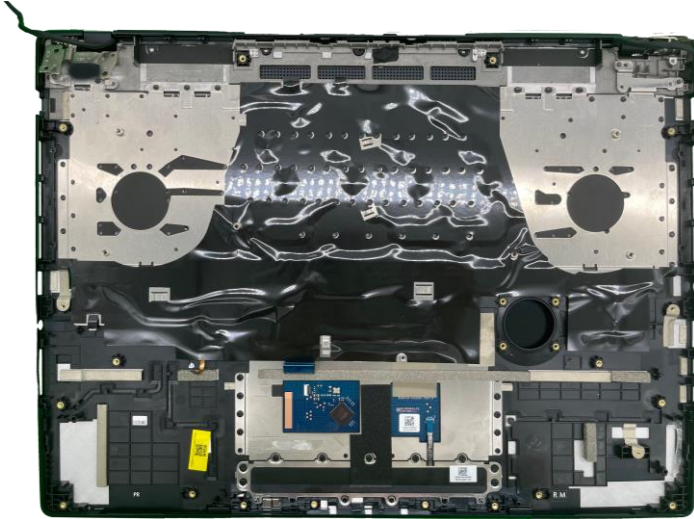
FP FFC



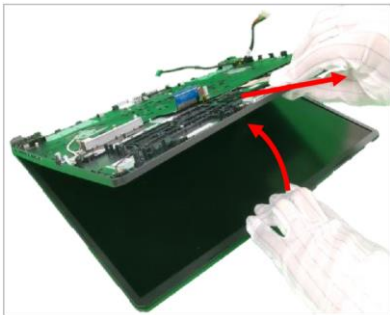
Disassembly Notice

Please be sure to pull out adapter and disconnect the battery. 


Step 1 : Remove the KEYBOARD MODULE.

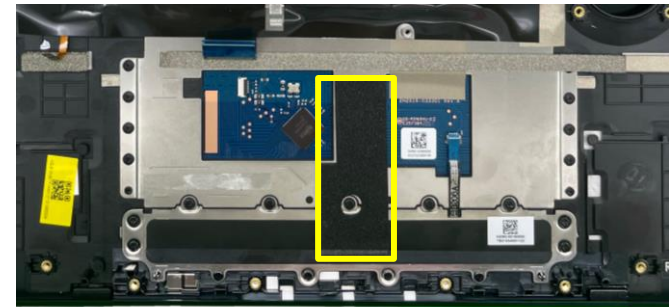


① Open and Remove



Assembly Notice

 For the new KEYBOARD MODULE, there is no sponge (yellow mark) and do not post it in the future (ECN change).

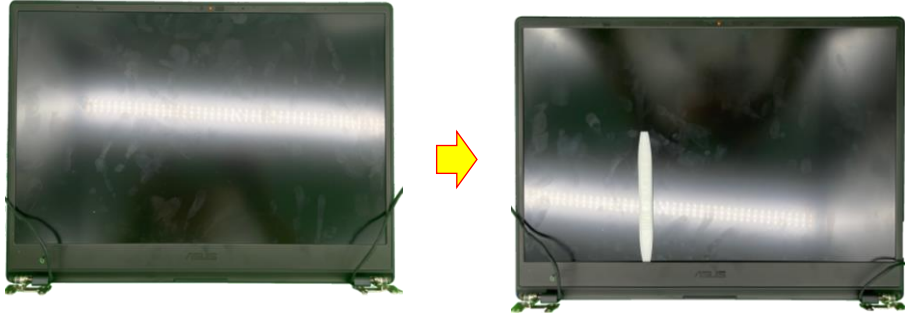


Disassembly Notice

Please be sure to pull out adapter and disconnect the battery. 

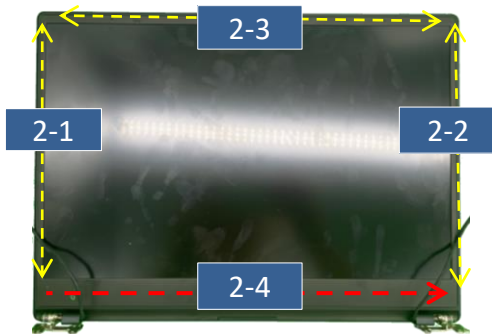
Step 1 : Remove LCD BEZEL.

① Remove



②

Step 2-1~2-3, Start from the middle area of each side of bezel, Using the forefinger to hold the outer edge firmly and the thumb flipping the bezel inner edge outward to release the hooks as indicated in the diagram shown. (It can be helpful, if holding the bezel outer edge firmly with forefinger.)



Step 2-1~2-3

Thumb flipping the inner edge outward.



Step 2-4

Due to some tapes behind the lower edge of bezel, please using plastic blade to teardown the bezel. (Just for IPS Panel SKU, the bezel has a BEZEL ADHESIVE TOP D) Please follow the direction shown in the red arrow, to move plastic blade from left to right and peel the bezel away slowly. While peeling, please move the blade in the parallel direction to the panel and **pressing the black Mylar downward** (As circled in green) to ensure the black Mylar and the tape behind the bezel are well separated.

Please move blade slowly to separate the bezel away and must press the black Mylar downward with panel parallel direction..



Assembly Notice



1-1 When reuse the LCD BEZEL: Please paste new LCD BEZEL ADHESIVE before assembly BEZEL. (New LCD BEZEL already contains LCD BEZEL ADHESIVE 4pcs)




Disassembly Notice

Please be sure to pull out adapter and disconnect the battery. 

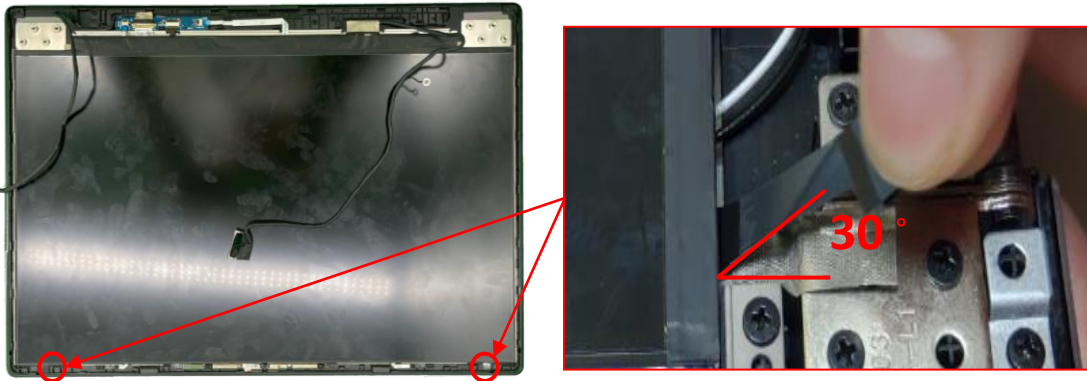
Step 1 : Remove the screws*8pcs then remove the hinges*2pcs.

Step 2 : Pull out LCD adhesive *2pcs.

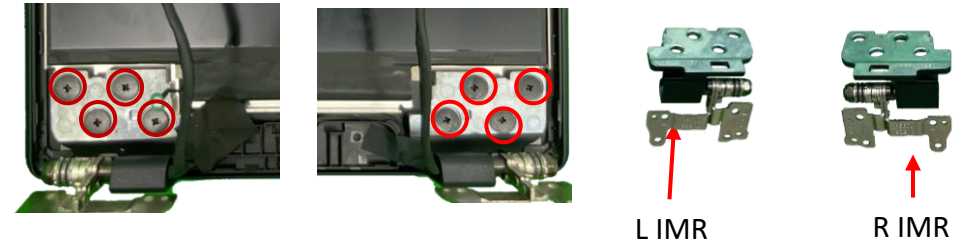
Step 3 : Remove LCD PANEL.

Screws	QTY	Spec	Torque (kgf-cm)
	8	SCREW M2.5*2.5L(7.5,0.6)(K) #1	3.0±0.2

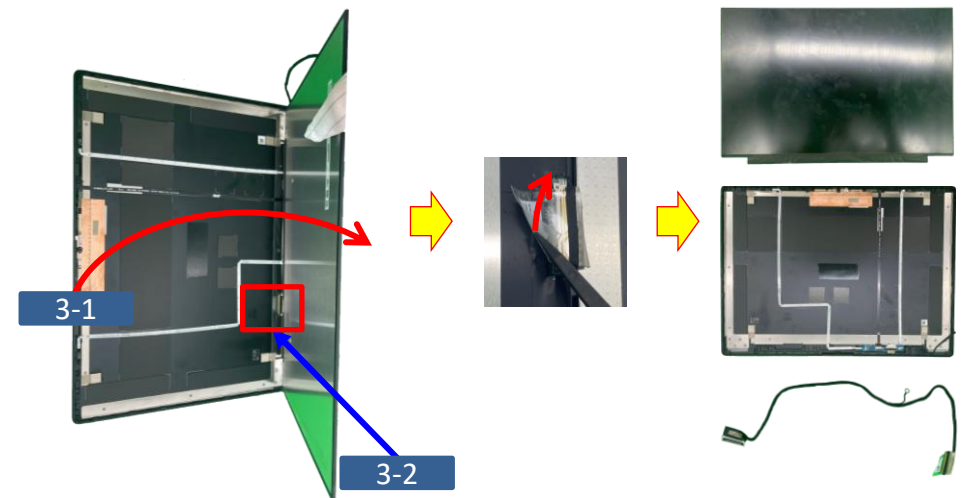
- 2  Please pull the adhesive up about 30 degree slowly, and don't pull out the tape in vertical direction!



1 Remove



3 Flip up the panel, and disconnect the EDP connector.



Assembly Notice

Please be sure to pull out adapter and disconnect the battery. 

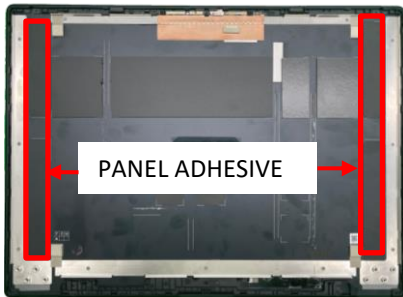
A When reuse the LCD PANEL:

Please use the fingertip to clean the residual glue on PANEL or BEZEL.


**B When reuse the LCD COVER:**

Please paste new PANEL ADHESIVE *2pcs.

(New LCD COVER already contains PANEL ADHESIVE *2pcs)



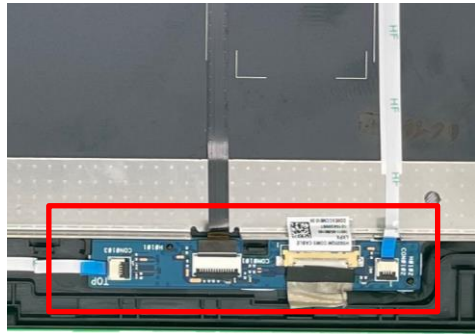
Disassembly Notice

Please be sure to pull out adapter and disconnect the battery. 

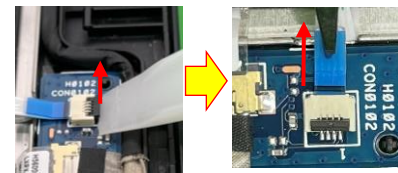
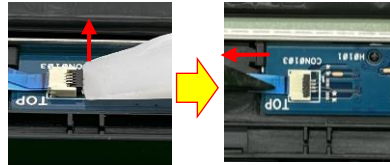
Step 1 : Disconnect all connector *4pcs(red mark) from the CMOS BOARD and remove the CMOS BOARD and COMS CABLE.

Step 2 : Remove FPC_CAM and DIGITAL MICROPHONE *2pcs.

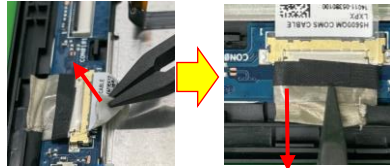
Step 3 : Remove the camera.



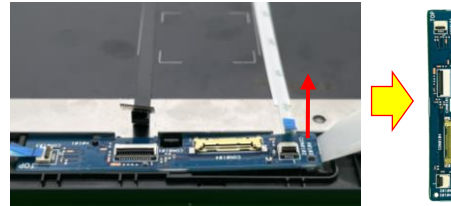
DIGITAL MICROPHONE connector



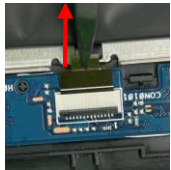
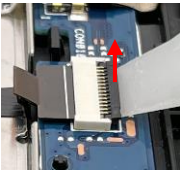
COMS CABLE



Remove CMOS_BD

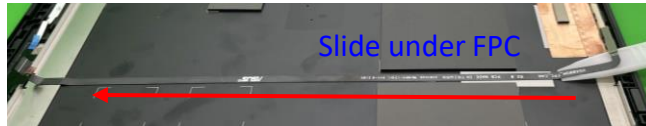
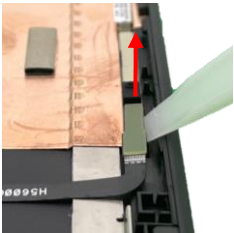


1 Disconnect and Remove.
FPC_CAM



2 Remove.

Remove FPC_CAM



Remove DIGITAL MICROPHONE



3 Remove.

