

ASUS Zenbook UX425UA series

Repair Manual

COPYRIGHT INFORMATION

No part of this manual, including the products and software described in it, may be reproduced, transmitted, transcribed, stored in a retrieval system, or translated into any language in any form or by any means, except documentation kept by the purchaser for backup purposes, without the express written permission of ASUSTeK COMPUTER INC. ("ASUS").

ASUS PROVIDES THIS MANUAL "AS IS" WITHOUT WARRANTY OF ANY KIND, EITHER EXPRESS OR IMPLIED, INCLUDING BUT NOT LIMITED TO THE IMPLIED WARRANTIES OR CONDITIONS OF MERCHANTABILITY OR FITNESS FOR A PARTICULAR PURPOSE. IN NO EVENT SHALL ASUS, ITS DIRECTORS, OFFICERS, EMPLOYEES OR AGENTS BE LIABLE FOR ANY INDIRECT, SPECIAL, INCIDENTAL, OR CONSEQUENTIAL DAMAGES (INCLUDING DAMAGES FOR LOSS OF PROFITS, LOSS OF BUSINESS, LOSS OF USE OR DATA, INTERRUPTION OF BUSINESS AND THE LIKE), EVEN IF ASUS HAS BEEN ADVISED OF THE POSSIBILITY OF SUCH DAMAGES ARISING FROM ANY DEFECT OR ERROR IN THIS MANUAL OR PRODUCT.

Products and corporate names appearing in this manual may or may not be registered trademarks or copyrights of their respective companies, and are used only for identification or explanation and to the owners' benefit, without intent to infringe.

SPECIFICATIONS AND INFORMATION CONTAINED IN THIS MANUAL ARE FURNISHED FOR INFORMATIONAL USE ONLY, AND ARE SUBJECT TO CHANGE AT ANY TIME WITHOUT NOTICE, AND SHOULD NOT BE CONSTRUED AS A COMMITMENT BY ASUS. ASUS ASSUMES NO RESPONSIBILITY OR LIABILITY FOR ANY ERRORS OR INACCURACIES THAT MAY APPEAR IN THIS MANUAL, INCLUDING THE PRODUCTS AND SOFTWARE DESCRIBED IN IT.

Copyright © 2024 ASUSTeK COMPUTER INC. All Rights Reserved.

LIMITATION OF LIABILITY

Circumstances may arise where because of a default on ASUS' part or other liability, you are entitled to recover damages from ASUS. In each such instance, regardless of the basis on which you are entitled to claim damages from ASUS, ASUS is liable for no more than damages for bodily injury (including death) and damage to real property and tangible personal property; or any other actual and direct damages resulted from omission or failure of performing legal duties under this Warranty Statement, up to the listed contract price of each product.

ASUS will only be responsible for or indemnify you for loss, damages or claims based in contract, tort or infringement under this Warranty Statement.

This limit also applies to ASUS' suppliers and its reseller. It is the maximum for which ASUS, its suppliers, and your reseller are collectively responsible.

UNDER NO CIRCUMSTANCES IS ASUS LIABLE FOR ANY OF THE FOLLOWING: (1) THIRD-PARTY CLAIMS AGAINST YOU FOR DAMAGES; (2) LOSS OF, OR DAMAGE TO, YOUR RECORDS OR DATA; OR (3) SPECIAL, INCIDENTAL, OR INDIRECT DAMAGES OR FOR ANY ECONOMIC CONSEQUENTIAL DAMAGES (INCLUDING LOST PROFITS OR SAVINGS), EVEN IF ASUS, ITS SUPPLIERS OR YOUR RESELLER IS INFORMED OF THEIR POSSIBILITY.

SERVICE AND SUPPORT

Visit our multi-language website at <https://www.asus.com/support/>.

MyASUS offers a variety of support features including troubleshooting, products performance optimization, ASUS software integration, and helps you to organize personal desktop and increase storage space. For more details, please visit <https://www.asus.com/support/FAQ/1038301/>.

- **ASUS is not responsible for direct, indirect, intentional or unintentional damages resulting from improper installation and operation.**
- **Carefully read through this Service Guide for a look at various components of the device before performing any service and repairs.**
- To provide the best service, we have provided the below information for technicians from distributors and resellers to perform the complete device disassembly and assembly. Before performing the procedures, please be sure to read through the overview in this service guide for component overview to avoid any unwarranted damages to the device hardware.
- Due to sales policy difference, the components might have different specifications on the same series product, please refer to E-manual by model.

Safety precautions

- Before handling components, use a grounded wrist strap or touch a safely grounded object to avoid damaging them due to static electricity.
- Keep liquids or moisture away from your device to avoid short circuits.
- Remove rings, watches, and any other metal objects from your hands.
- Hold components by the edges to avoid touching the ICs.
- Properly install all components before connecting the AC power.
- Do not use power adapters or batteries from other devices to reduce the risk of injury to persons due to fire or explosion.
Use only certified power adapters or batteries supplied by the manufacturer or authorized retailers.
- Detach all clips or flaps before removing cables to prevent damage.
- Use the correct screw models on your device to prevent damage.
- Fully remove all adhesive residue after removing and before installing any components.
- Photograph the appearance of cables, cable routing, connectors, and screws for later reference before proceeding with each step.

- Read the entire manual before starting any service procedures and follow all instructions.
- Back up the data on your device.
- Place your device on a clean and stable surface.
- Turn off your device.
- Disconnect all connected peripherals and cables.
- Disconnect all power cables and remove the battery pack (if applicable).

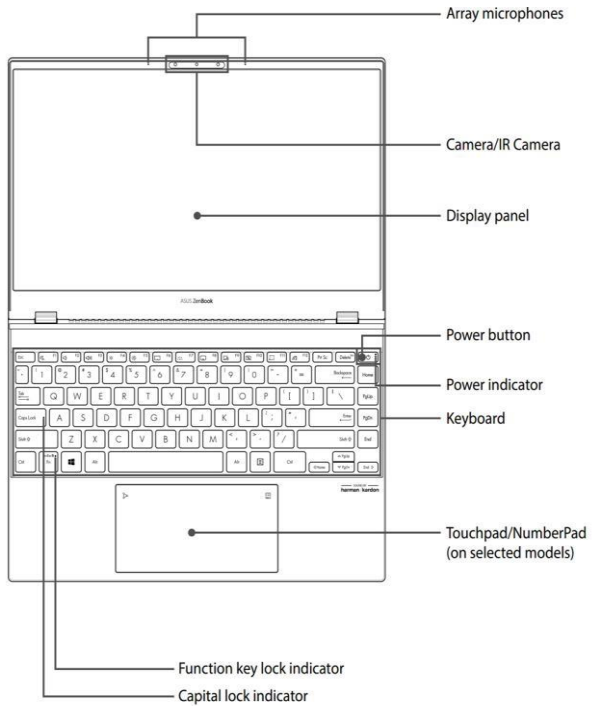
IMPORTANT!

- If you are uncertain about performing the described service procedures, stop and contact an authorized service center for assistance.
- Purchase replacement components from authorized retailers of this device to ensure maximum compatibility and reliability.

NOTE

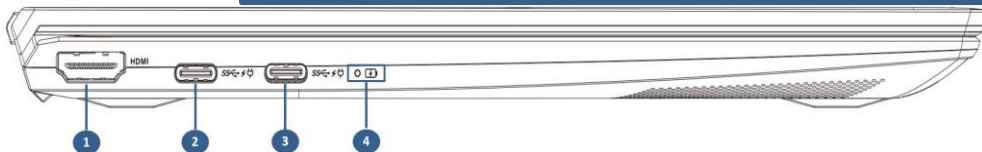
- The illustration are for reference only.
- The service procedures described in this document depend on the model configuration and may not reflect the entire servicing process. To service components that are not covered in this document, please visit an authorized service center for further assistance.
- Keep all adhesive tape, insulating materials, screws, and other removable items in a safe place until the service procedure is completed, as they may be needed during reassembling.

Top View

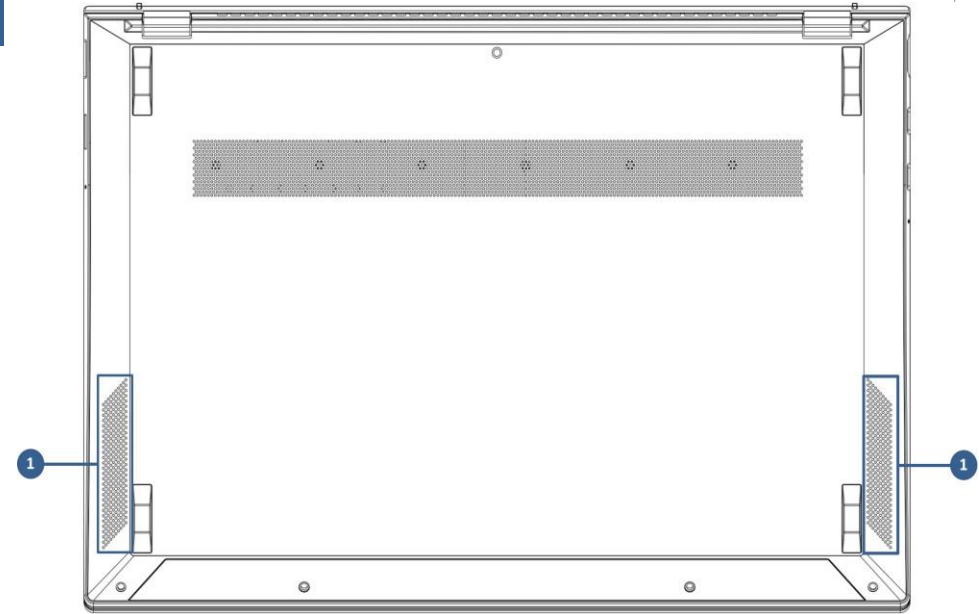


Left View

- 1、HDMI port
- 2、USB 3.2 Gen 2 Type-C/Thunderbolt 3/Power Delivery combo port
- 3、USB 3.2 Gen 2 Type-C/Thunderbolt 3/Power Delivery combo port
- 4、Power indicator

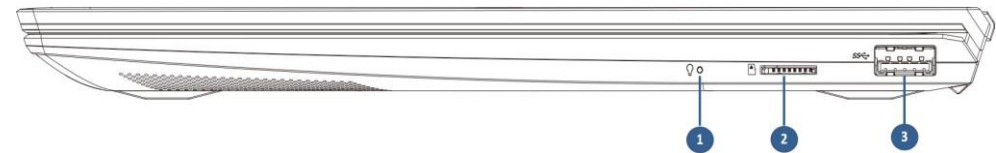


Bottom View



1 Audio speakers

Right View



- 1、Headphone/Headset/Microphone jack
- 2、MicroSD card slot
- 3、USB 3.2 Gen1 port

◆ LCD COVER MODULE



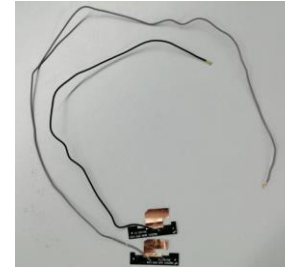
◆ KEYBOARD MODULE



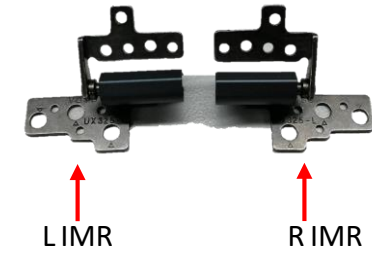
◆ TOUCHPAD MODULE



◆ WIFI ANTENNA



◆ HINGE



◆ LCD BEZEL



◆ MAIN BOARD



◆ CPU FAN



◆ SPEAKER



◆ SSD ALL FOIL



◆ 14.0" LCD



◆ IO BOARD



◆ CAMERA



◆ SSD



◆ THERMAL MODULE ASSY



◆ BATTER



◆ BASE CASE



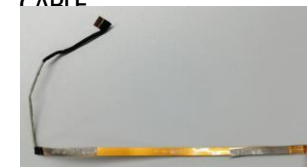
◆ TP FFC



◆ I/O CABLE



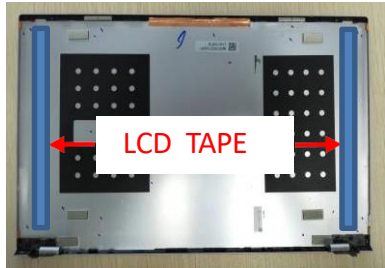
◆ CCD CABLE



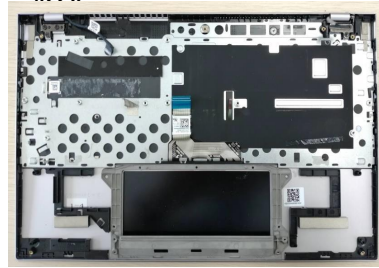
◆ LCD CABLE



◆ LCD COVER MODULE



◆ KEYBOARD MODULE



◆ THERMAL MODULE



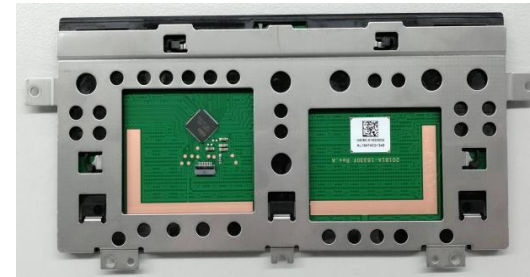
◆ LCD BEZEL



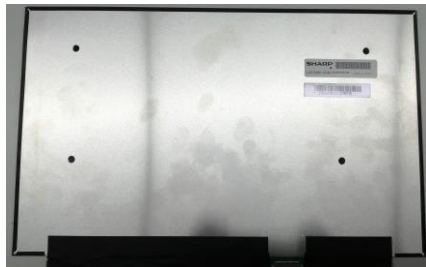
◆ BASE CASE



◆ TOUCHPAD MODULE



◆ LCD Panel



◆ MAIN BOARD



◆ IO BOARD



This chapter describes disassembly and assembly (Assemble document please look up from the last page), please follow the information provided in this section to perform the complete disassembly procedure.

◆ **Precautions:**

Before you perform any service or repair on the notebook, please pay special attention to the cautions prevent any damages to the notebook.

1. Be sure that the notebook is powered down.
2. Before disassembling any part, please disconnect all power source. ex: AC plug/Battery connector/Power protect screw etc.

3. Remove all rings, watches and any other metal objects from your hands.



4. Always wear a ground strap on your hand to protect the notebook from static discharge.
5. Please refer to “ANSI ESD S20.20” about ESD protection measure.
6. Put the disassembled parts in the functional PE BAG to avoid any damages of the A/B/C/D part.



7. The maintenance environment temperature is 20-30 °C and humidity is 40% - 70%.
8. To avoid scratching on the surface of machine; please use anti-static and soft materials to put on desk in repair environment as below photo.



9. Screw Appearance Criteria:

If the screws have the following damaged appearance, please do not use.

- a. Shape deformed.
- b. Damaged head – unable to drive in or the stripped screw.
- c. Damaged unable to securely tighten.
- d. Paint scratched off.
- e. Rusty



10. The following chapter includes all part numbers mentioned in service guide are used for reference only, actual part name depends on different SKU, if you need the exact part number for ordering, please refer to the Orderbook.

11. Due to sales policy difference, the components may have different specifications on the same model. Please note that all pictures and components shown on Service Guide are for disassembly/assembly description purpose only, so please refer to the actual product for disassemble/assemble.

Please prepare and select the appropriate tools to disassemble/assemble for the ASUS VIVOBOOK X435E series notebook.

◆ Screwdriver
TTOE00517)

Please accord to different screw specification to choose different screwdriver and head.



◆ Plastic Blade



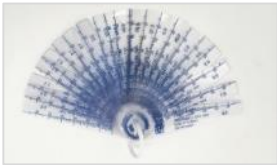
◆ Plastic Tweezers

Use a pair of tweezers to remove/insert/tidy cables.



◆ Thickness Gauge

Thickness compass specification 0.05mm-1.5mm. Use it to measure the gap.



◆ Magnetism Board

Suggest local buy magnetism board to place screw, avoid mix different type screw to cause assembly damage.



◆ Alcohol 95%



◆ Glove (P/N:16-



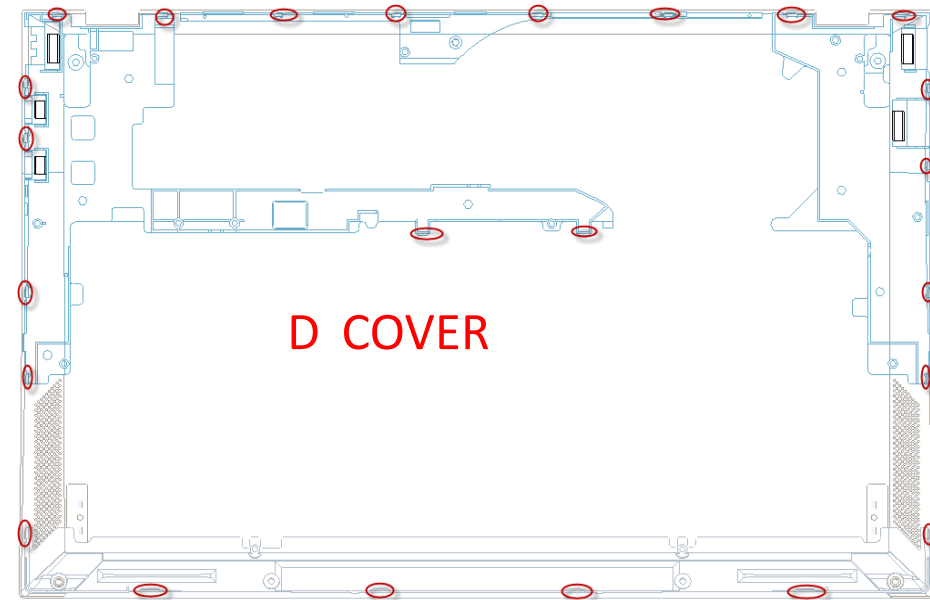
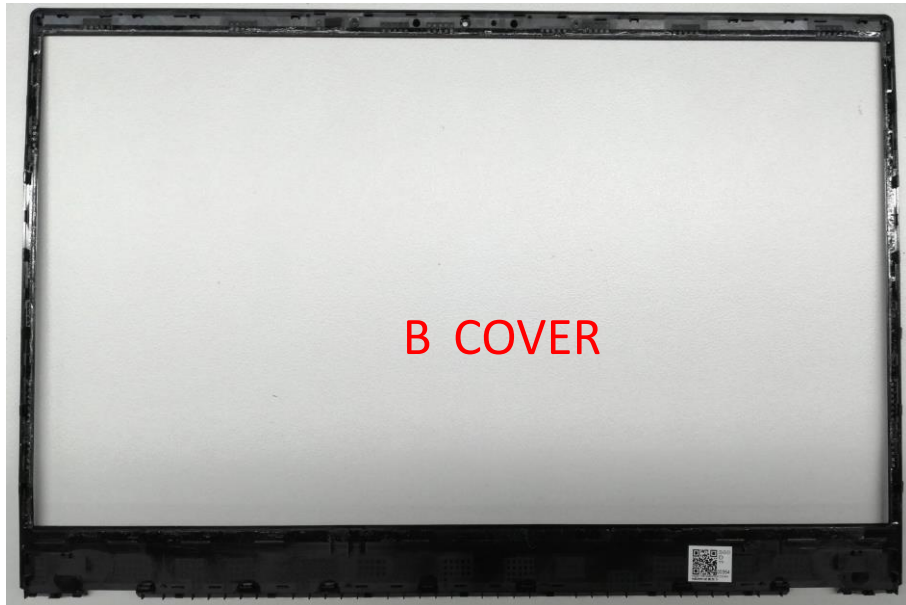
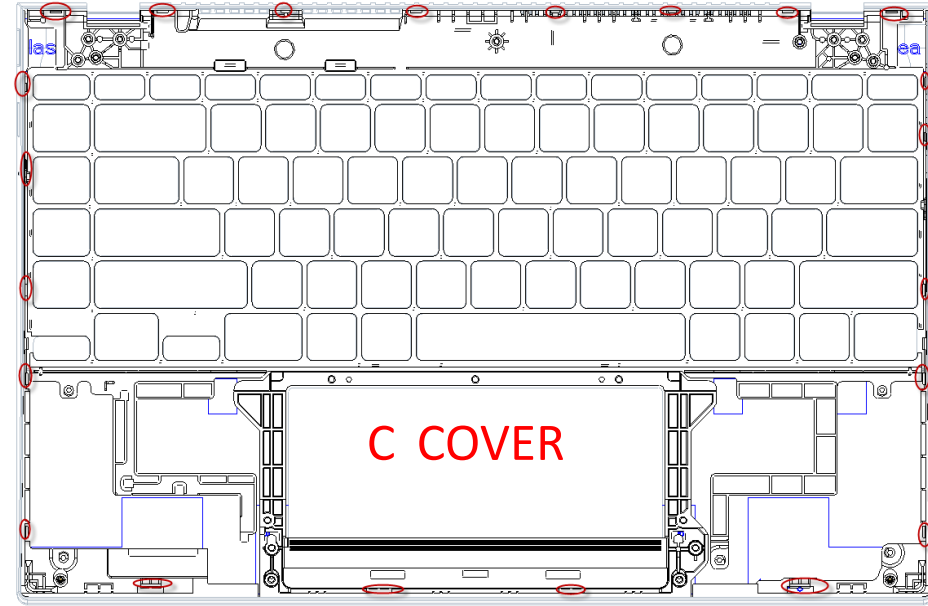
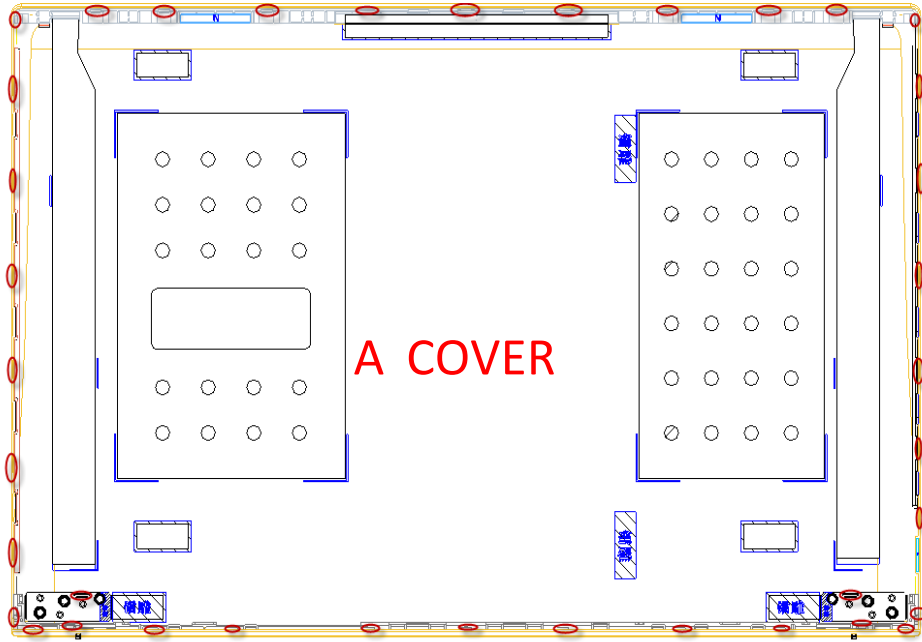
◆ Dust-free Cloth



◆ Thermal Pad (Substitute: Thermal Grease)

G500 Thermal Grease





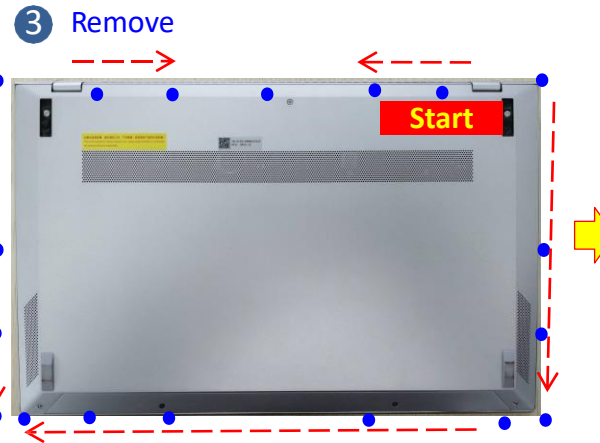
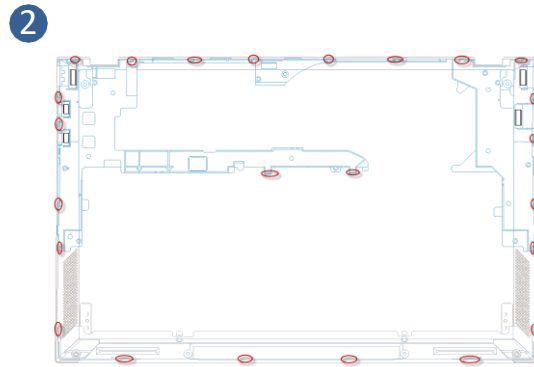
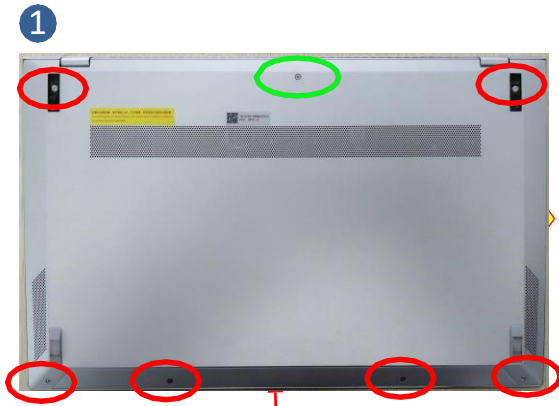
Disassembly Notice


Step 1 : Remove 2 foot rubbers firstly, then remove 7 screws on the bottom case


Step 2 : Use plastic blade to pry Bottom Case and remove it.

Step 3 : Remove the keyboard connector and touch PAD connector at main board.

Screws	QTY	Spec	Torque (kgf-cm)
	6	SCREW M2*4L (K)W-NI,NY #0	2.0±0.2
	1	SCREW M2*7L (K)W-NI,NY #0	2.0±0.2



 Notice: Before disassembly, please be sure to pull out adapter and disconnect the battery more than ten seconds in order to avoid IC damage.



 Please follow above arrow direction with disassembly card to pry D cover in each red circle location.

• BATTERY

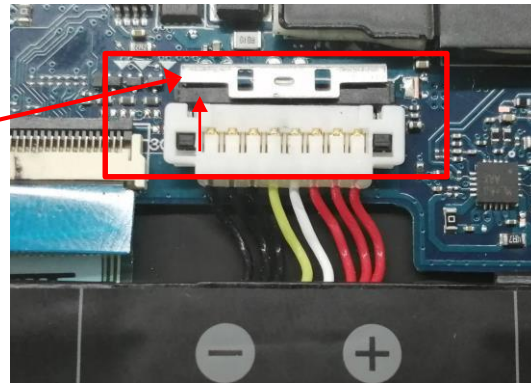
Disassembly Notice Please be sure to pull out adapter and disconnect the battery. 

Before disassembly battery connector, please be sure to pull out adapter and disconnect the battery more than ten seconds in order to IC damage.

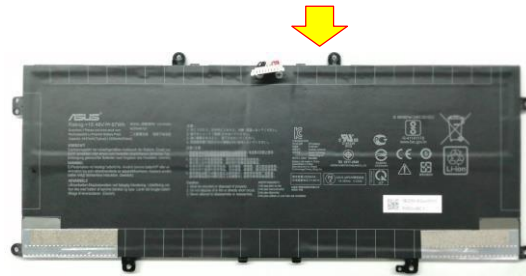
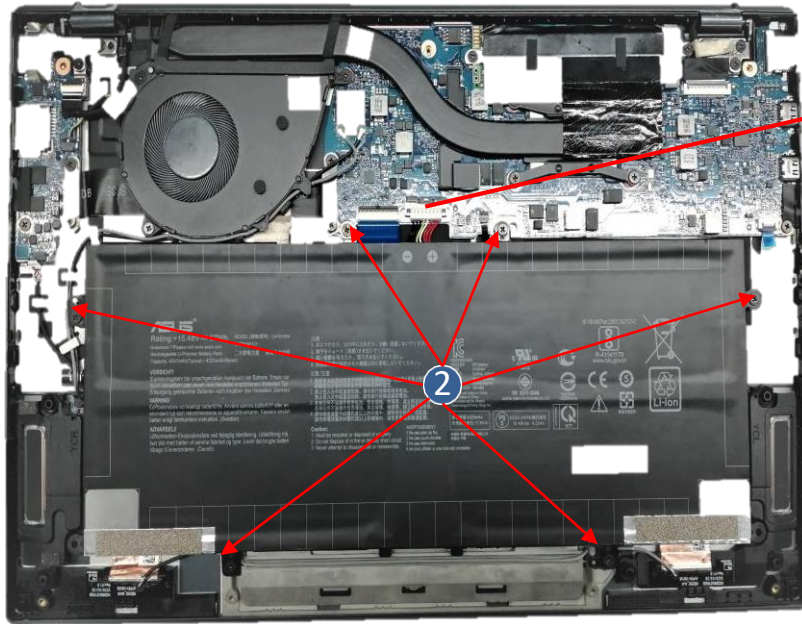
- Step 1 : Disconnect the battery connector.
- Step 2 : Remove screws *6pcs.
- Step 3 : Remove BATTERY.

Screws	QTY	Spec	Torque(kgf-cm)
 	6	SCREW M2*3.7L K B-ZN #1 NY#0	2±0.2

1 Disconnect



3 Remove

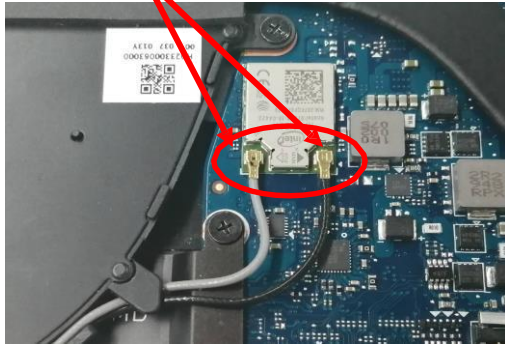


Disassembly Notice Please be sure to pull out adapter and disconnect the battery.

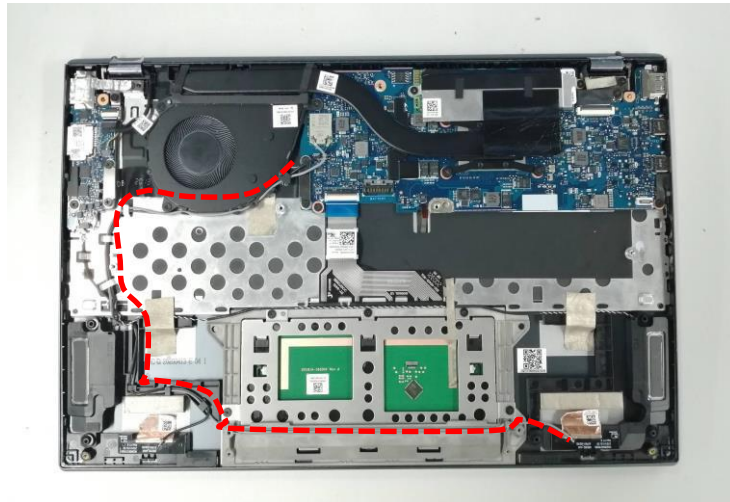


- Step 1 : Disconnect the WLAN antenna connector from the MB.
- Step 2 : Remove the antenna cable along the buckle position
- Step 3 : Remove the antenna

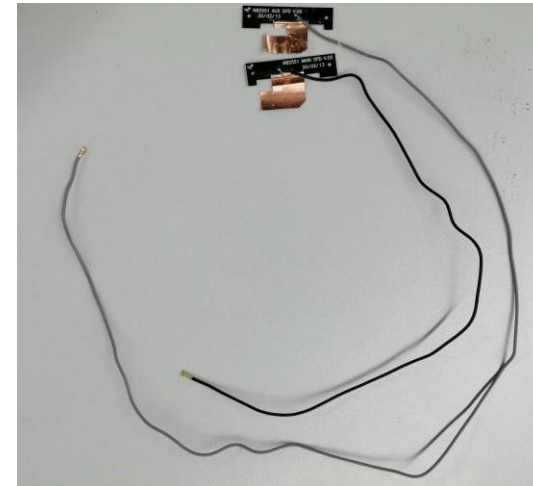
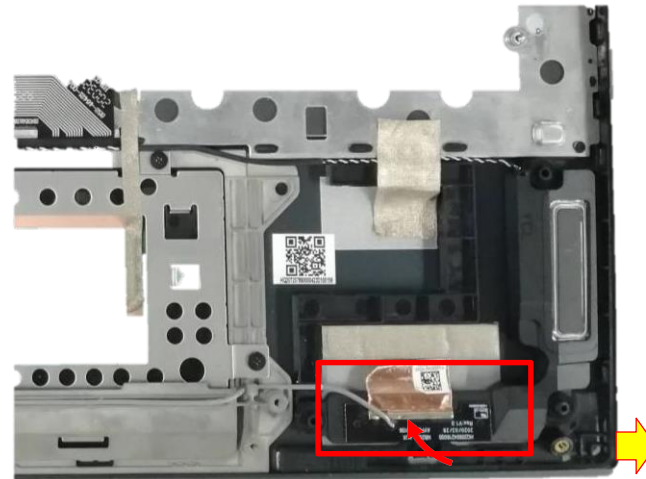
① Disconnect



② Remove



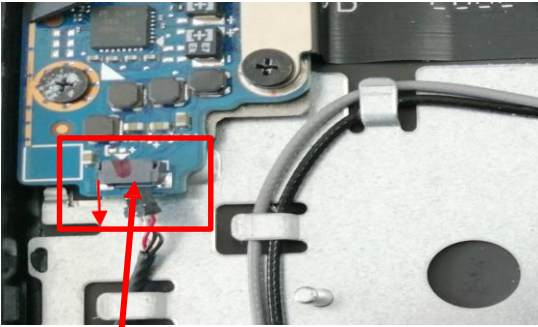
③ Remove the antenna



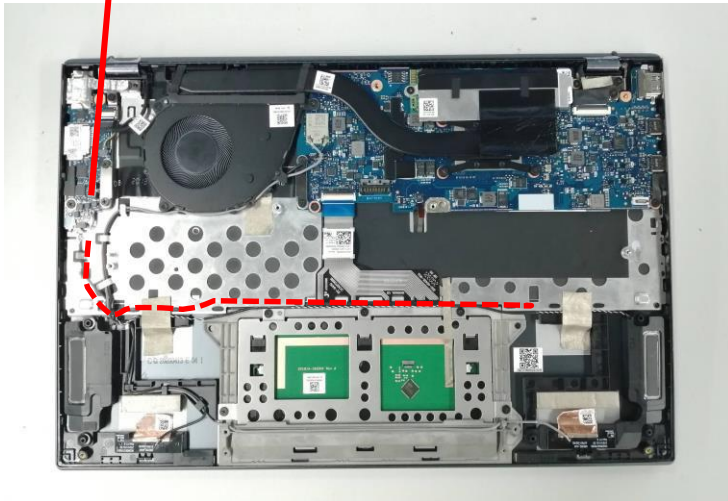
Disassembly Notice Please be sure to pull out adapter and disconnect the battery.

- Step 1 : Disconnect the speaker module connector from the USB board, shows as below.
- Step 2 : Remove the antenna cable along the buckle position
- Step 3 : Remove the Speaker Module

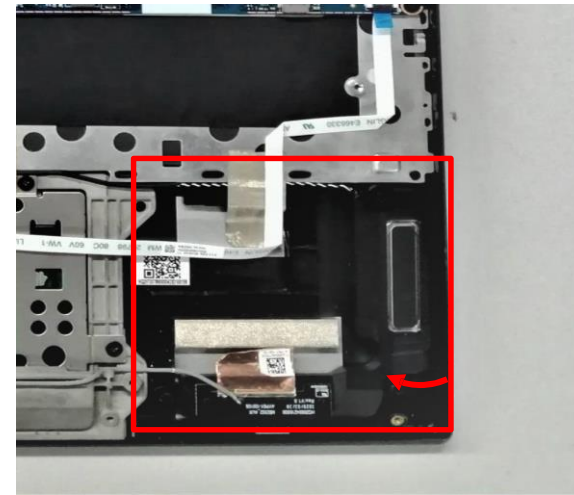
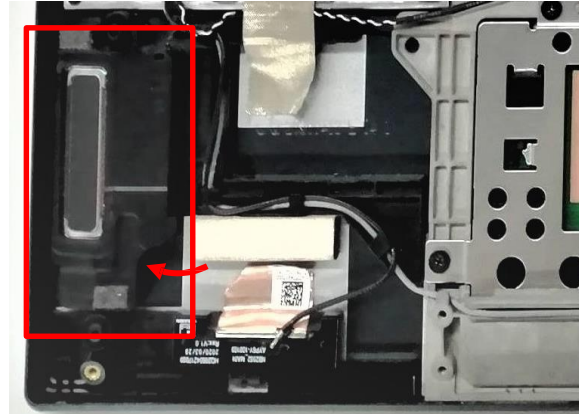
1 Disconnect



2 Remove



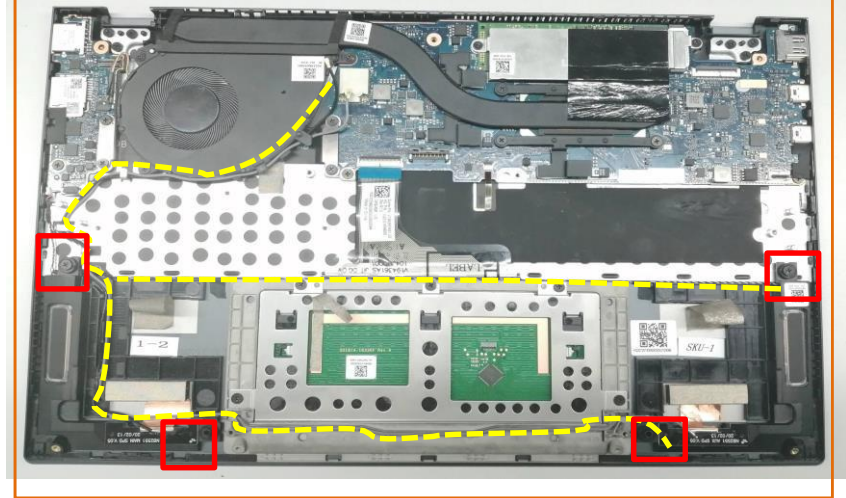
3 Remove Speaker Module



Assembly Notice

Speaker Module Assembly:

- 1、 Alignment c-shell speaker positioning column
- 2、 Refer to the red dotted line, Speaker cable in slot



Disassembly Notice Please be sure to pull out adapter and disconnect the battery.



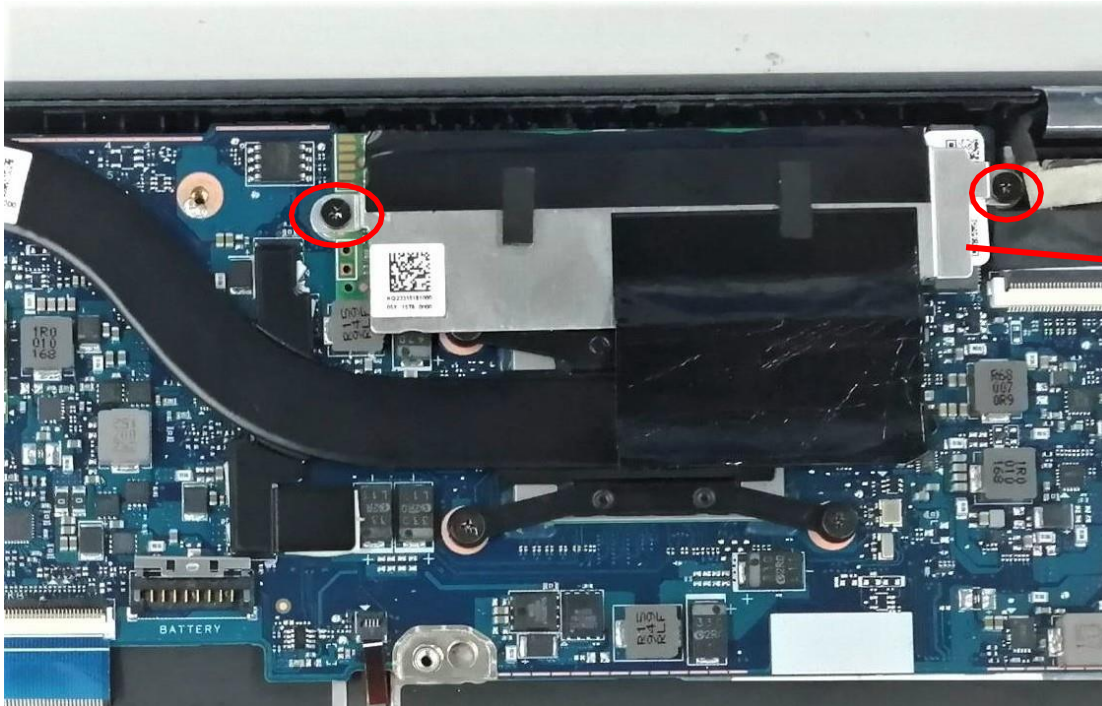
Step 1 : Remove 2 screws ,shows as below.

Step 2 : Remove SSD AL FOIL.

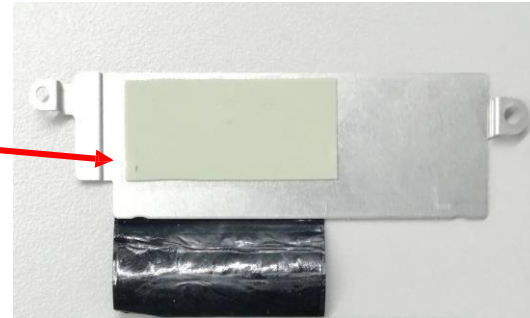
Step 3 : Remove SSD, please note the direction, shows as below

Screws	QTY	Spec	Torque (kgf-cm)
	2	SCREW M2*3.7L K B-ZN #1 NY	2.0±0.2

1



2 Remove



3 Remove



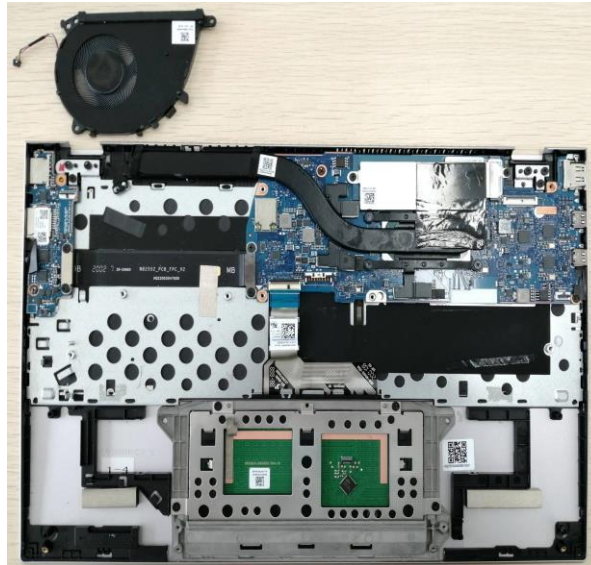
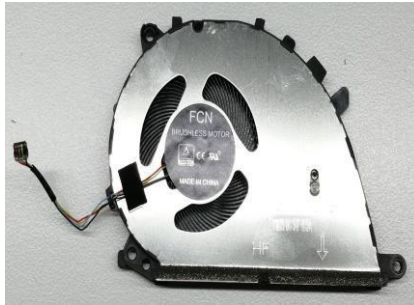
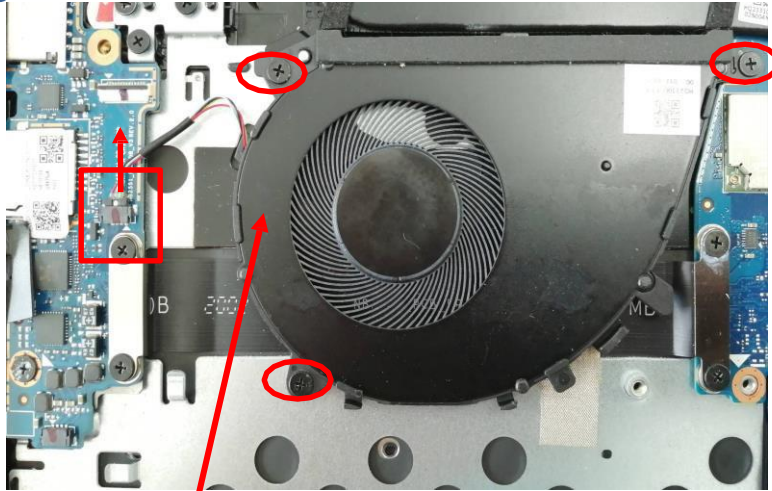
Disassembly Notice Please be sure to pull out adapter and disconnect the battery.

Step 1 : Remove the screws *3pcs.

Step 2 : pull out the Fan Cables.

Step 3 : Remove Fan.

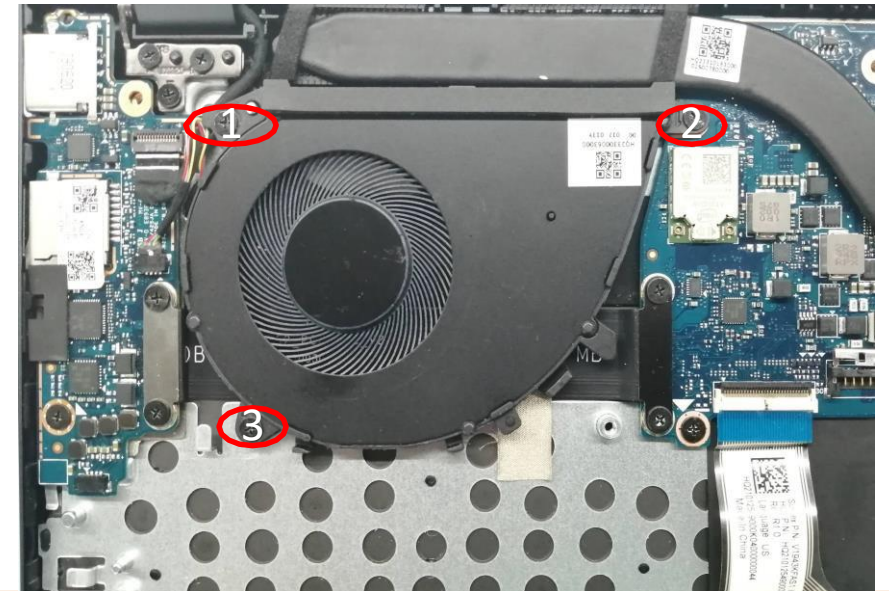
1



Screws	QTY	Spec	Torque (kgf-cm)
	3	SCREW M2*3.7L K B-ZN #1 NY	2.0±0.2

Assembly Notice

Diagram: successively Lock in 3 pcs screw,



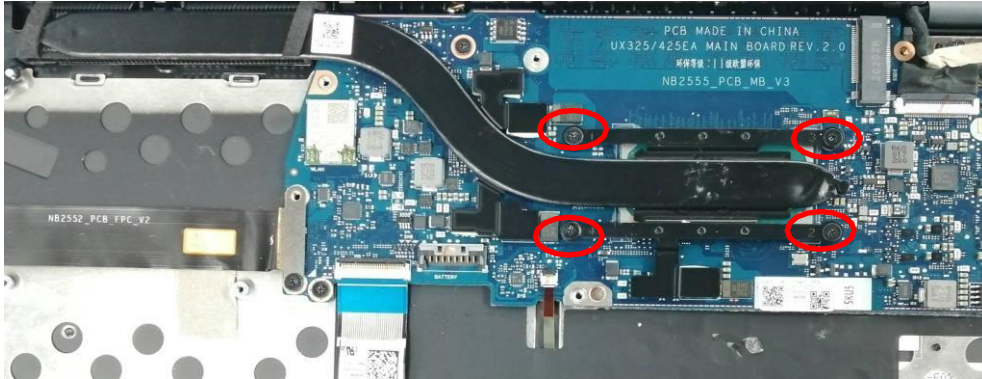
Disassembly Notice Please be sure to pull out adapter and disconnect the battery.



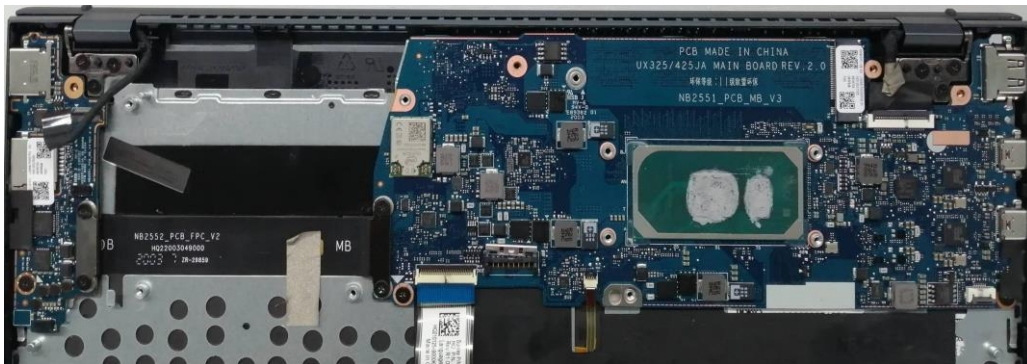
Step 1 : Remove screws *4pcs.

Step 2 : Remove Thermal module.

① Remove (red mark)



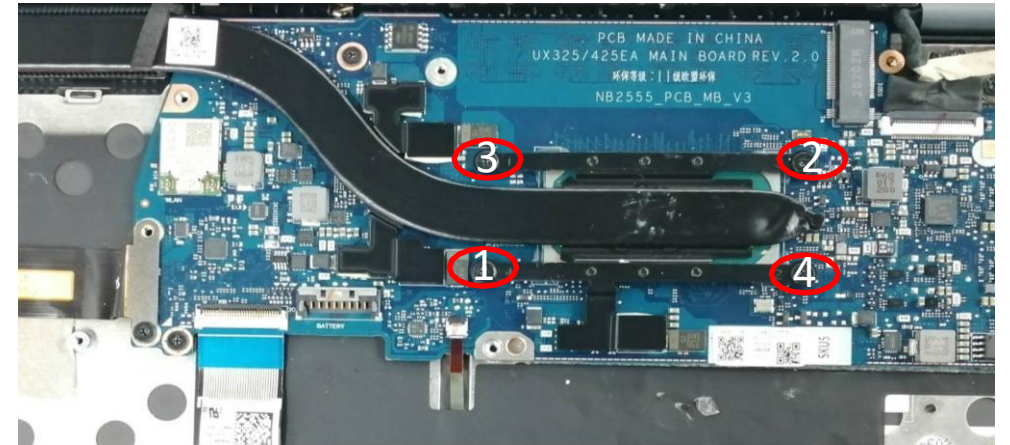
② Remove Thermal module



Screws	QTY	Spec	Torque (kgf-cm)
	4	SCREW M2*2 #1 NY	2.0±0.2

Assembly Notice


Diagram: successively Lock in 4 pcs screw,



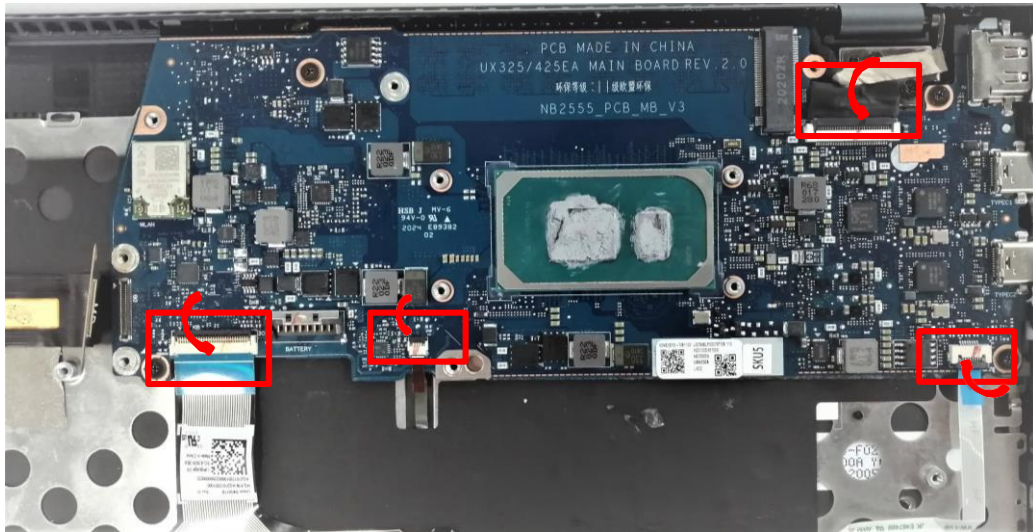
Disassembly Notice Please be sure to pull out adapter and disconnect the battery.



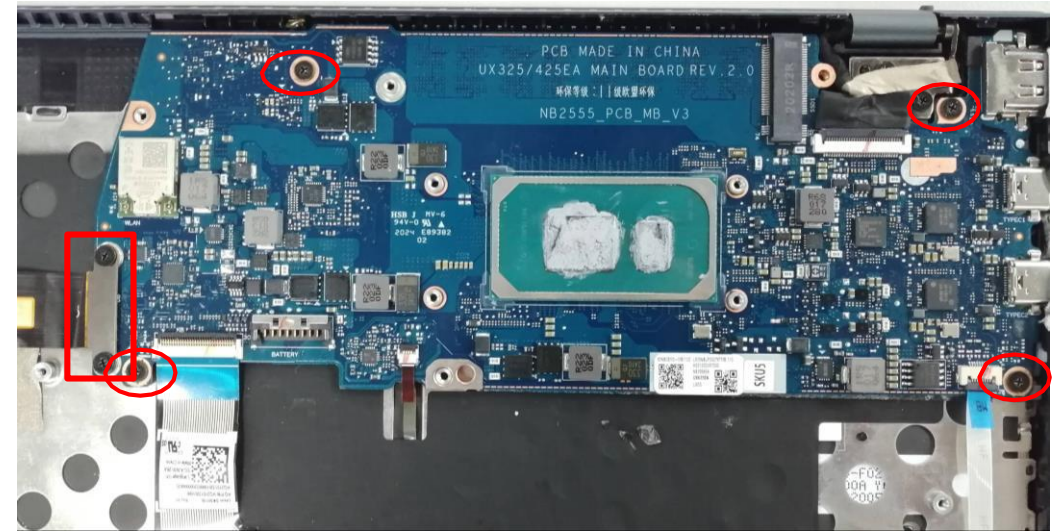
- Step 1 : Tear off the acetate cloth from the EDP cable connector on MB, then disconnect the EDP cable.
- Step 2 : Disconnect the I/O FPC, TP FFC, K/B, K/B backlight cable from MB..
- Step 3 : Remove 2 screws which locked on the FPC cable, shows as below.
- Step 4 : Remove the MB module.

Screws	QTY	Spec	Torque (kgf-cm)
	6	SCREW M2*3.7L K B-ZN #1 NY#0	2.0±0.2

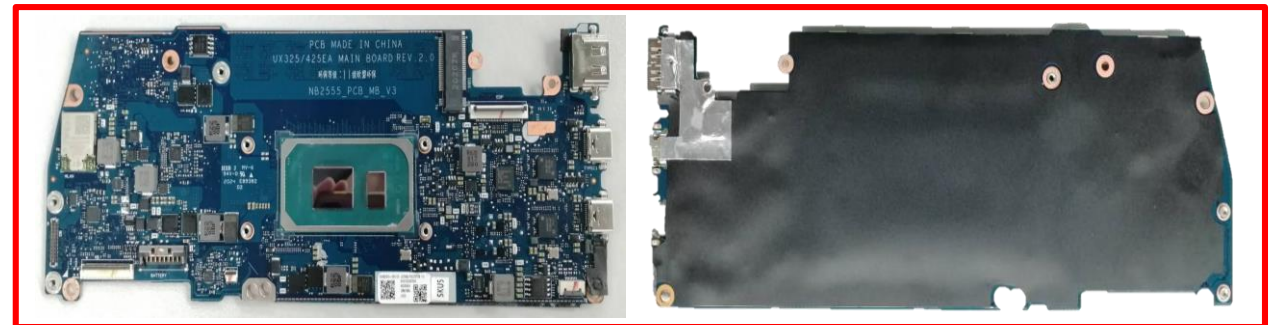
① Remove & Disconnect the I/O FPC,, K/B, K/B backlight cable, TP FFC



② Remove 6 screws on the motherboard, shows as below.



③ Remove MB



Disassembly Notice Please be sure to pull out adapter and disconnect the battery.





Step 1 Disconnect the LCD cable from the USB board firstly, shows as below.

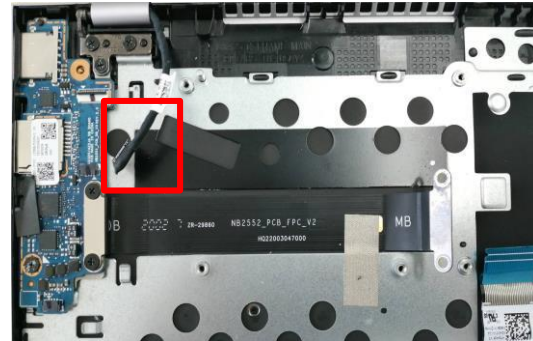
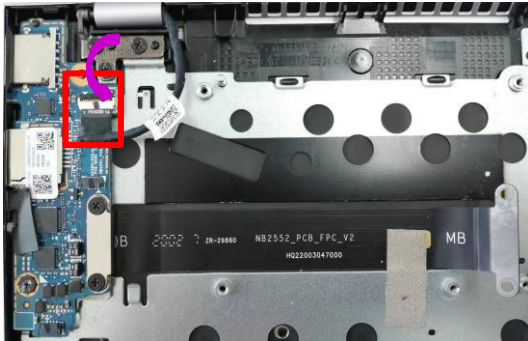
Step 2 : Remove the screw *3pcs.

Step 3 : Remove IO BOARD.

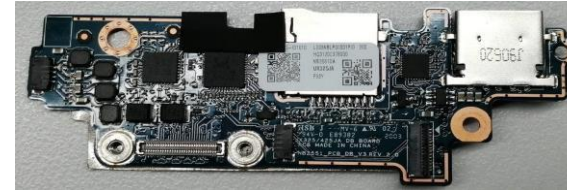
Step 4 : Remove I/O FPC cable, shows as below

Screws	QTY	Spec	Torque (kgf-cm)
 	6	SCREW M2*3.7L K B-ZN #1 NY#0	2.0±0.2

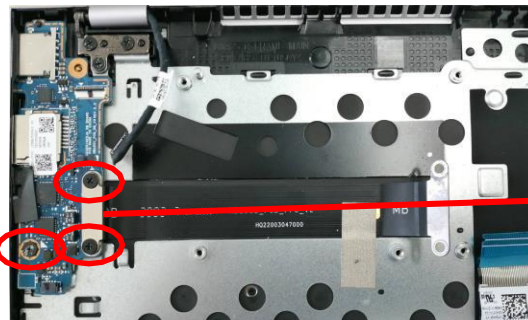
1 Disconnect LCD cable



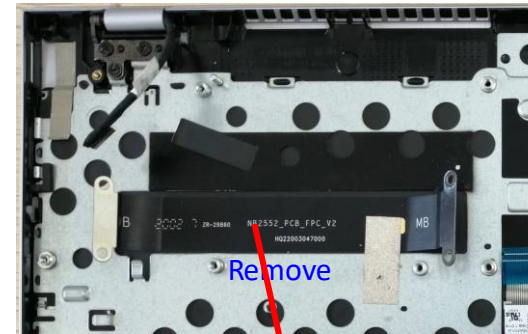
3 Remove I/O BOARD



2 Remove Screw

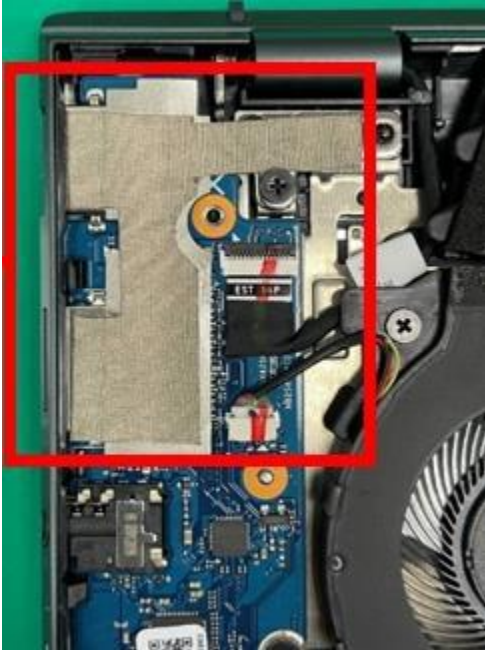


4 Remove I/O FPC cable, shows as below



Notice

IO BD of MP model CONDUCTIVE TAPE as below



• TOUCHPAD MODULE

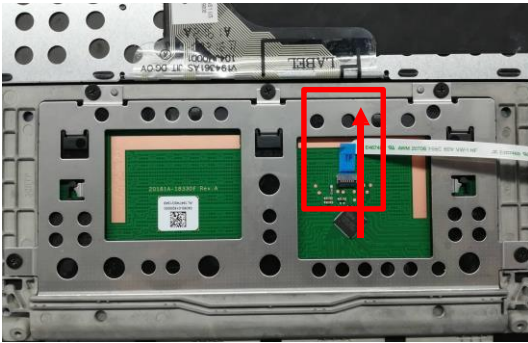
Disassembly Notice Please be sure to pull out adapter and disconnect the battery.



- Step 1 : Disconnect and remove the TP FFC.
- Step 2 : Remove screws *5pcs.
- Step 3 : Remove the TOUCHPAD MODULE.

Screws	QTY	Spec	Torque (kgf-cm)
	5	SCREW M2*2L NY #1	2.0±0.2

1 Disconnect and remove(yellow mark)



3 Remove TOUCHPAD MODULE

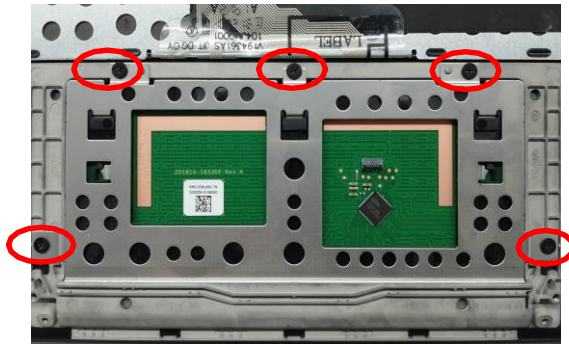


Assembly Notice

⚠ If FFC is damage during disassembly, please replace new one. Here are some samples of FFC damage:



2 Remove screws *5pcs



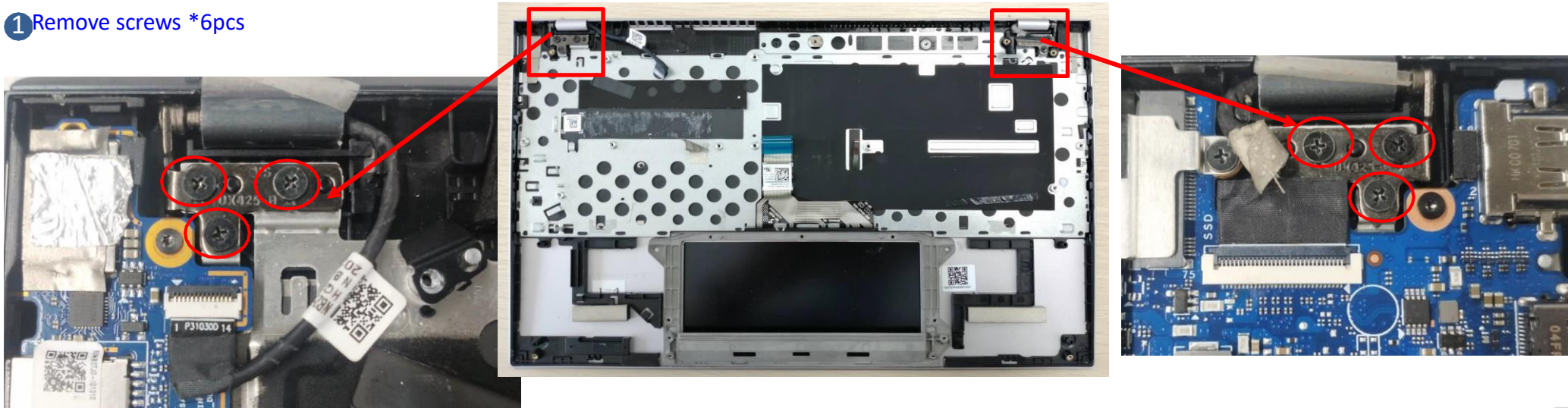
Disassembly Notice Please be sure to pull out adapter and disconnect the battery.



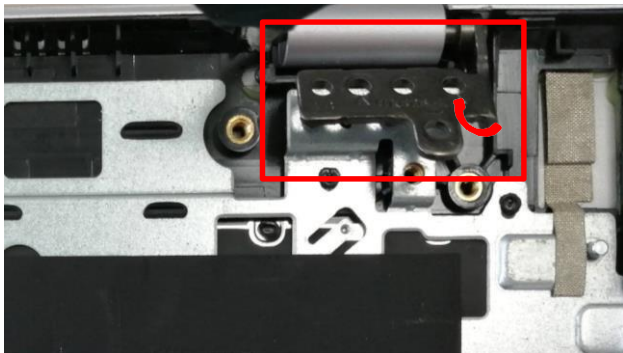
- Step 1 : Remove 3 screws in each side of the hinge, then separate the Top case module and Bottom case module.
- Step 2 : Remove screws *6pcs.
- Step 3 : Remove the TOUCHPAD MODULE.

Screws	QTY	Spec	Torque (kgf-cm)
	6	SCREW M2*3.7L K B-ZN #1 NY#0	2.0±0.2

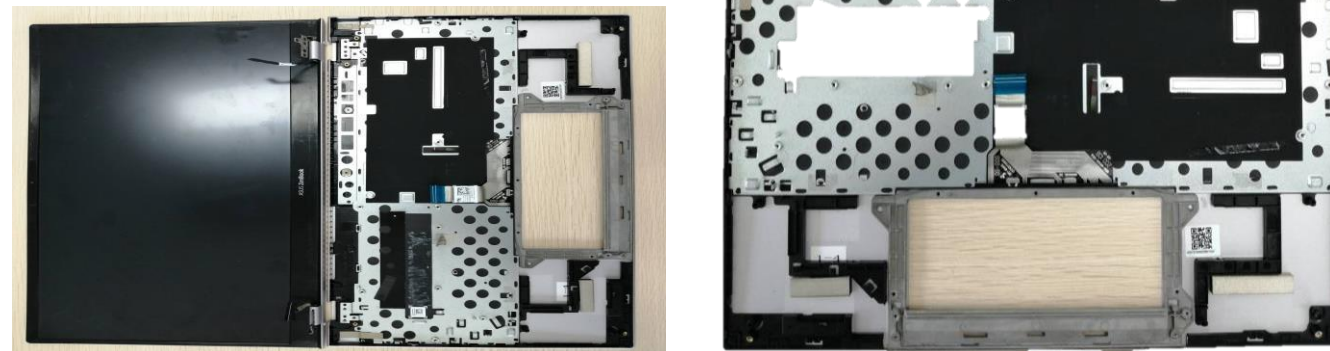
1 Remove screws *6pcs



2 Roll up the hinge, shows as below



3 Separate bottom case module and top case module



Disassembly Notice

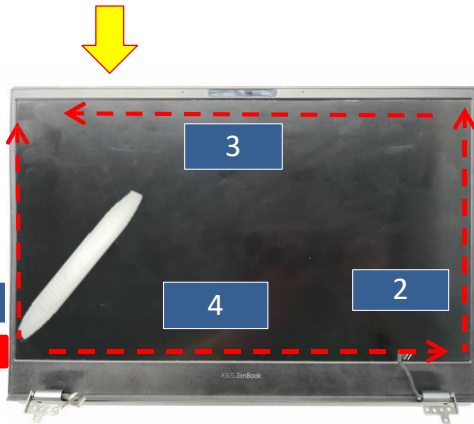
Please be sure to pull out adapter and disconnect the battery.



Step 1 : disassembly LCD bezel

Step 2 : Remove LCD bezel

- 1 Use disassembly card to pry up the edge of bezel between LCD bezel and LCD cover.

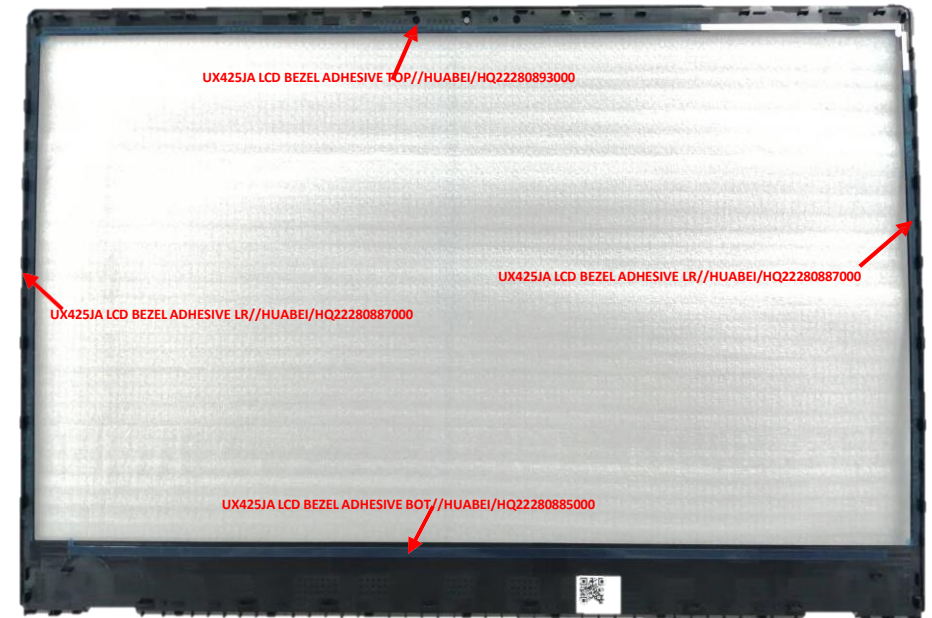


- 2 Remove LCD bezel



Assembly Notice



The bezel has 3 kinds of Bezel Tapes, please stick new ones when you assemble it.
The positions of the tapes as below :



Disassembly Notice

Please be sure to pull out adapter and disconnect the battery. 

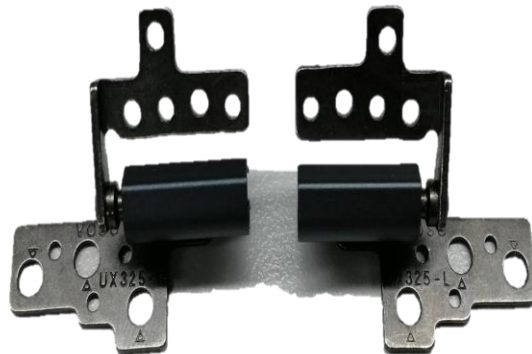
- Step 1 : Remove screws *6pcs,
- Step 2 : pick out the cable from the hinge.
- Step 3 : Remove the hinge

Screws	QTY	Spec	Torque (kgf-cm)
 	6	SCREW M2*2 L K B-ZN #1 NY#0	2± 0.2

1 Remove screws *6pcs

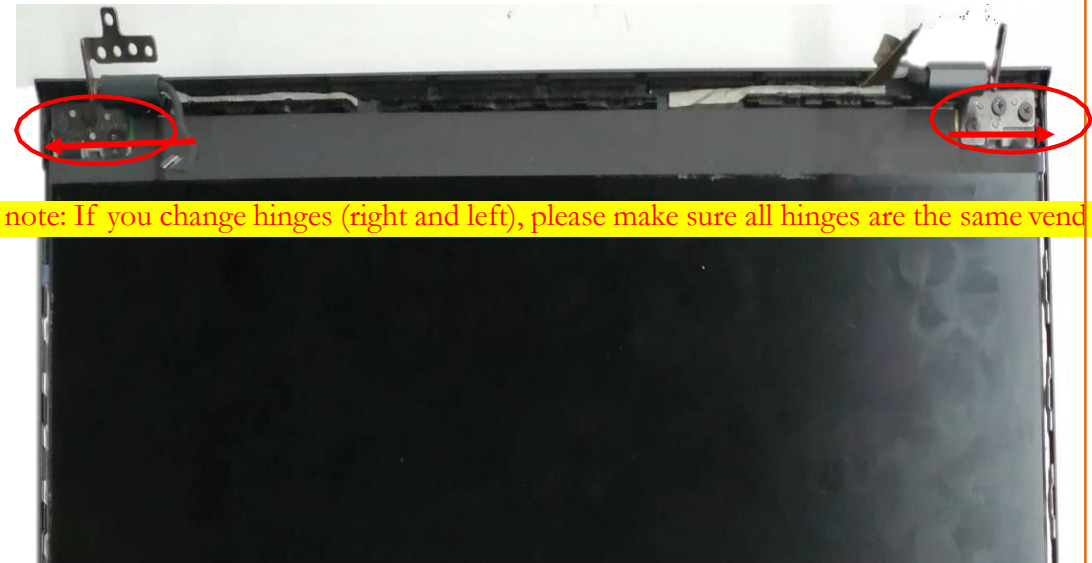


2 Remove the hinge



Assembly Notice

Diagram: Follow the direction of the arrow shown successively Lock in 3 pcs screw, (right and left);



Assembly note: If you change hinges (right and left), please make sure all hinges are the same vendor.

Disassembly Notice

Please be sure to pull out adapter and disconnect the battery. 

- Step 1 : Pull out the easy-pull glue (adhesive) in left and right side gently.
- Step 2 : Remove Separate the LCM from the top case module
- Step 3 : Disconnect the lcm cabel connector.
- Step 4 : Remove the LCM module and lcd Cabel

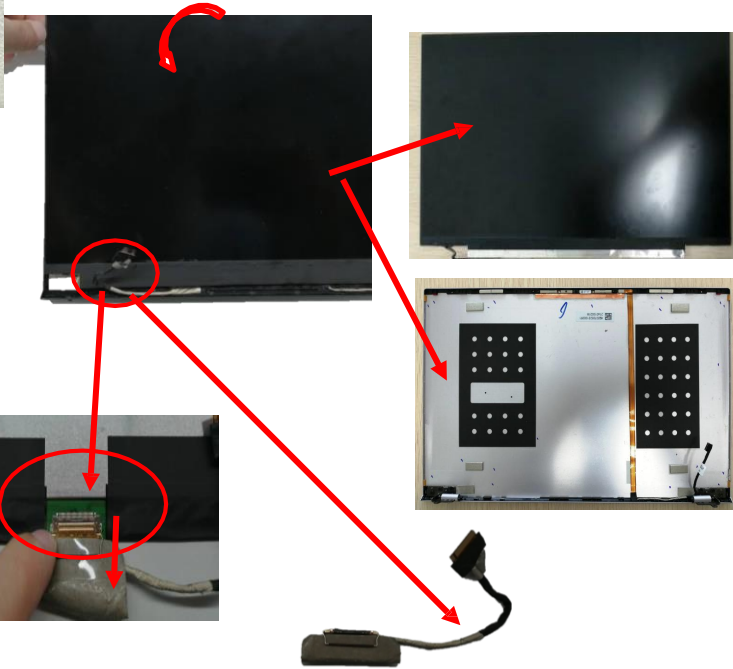
1 Pull out the easy-pull glue (adhesive) in left and right side gently.

Notice : Please slowly pull the adhesive up about 30 degree.



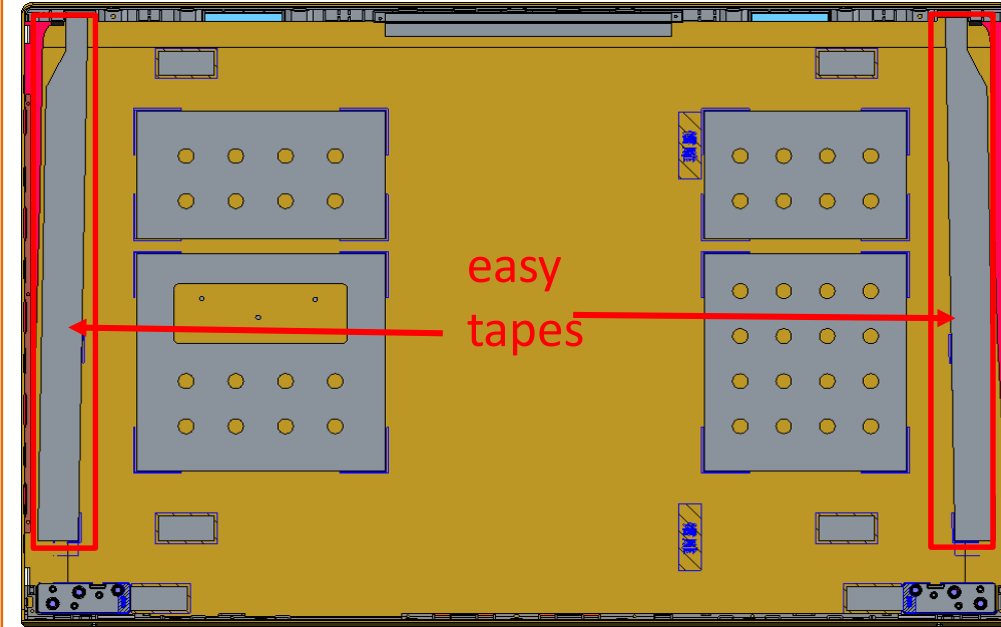
2

Remove Separate the LCM from the top case module



Assembly Notice

Please stick 2 new easy tapes when you assemble it.
The positions of the tapes shows as below, please note the direction.



Disassembly Notice

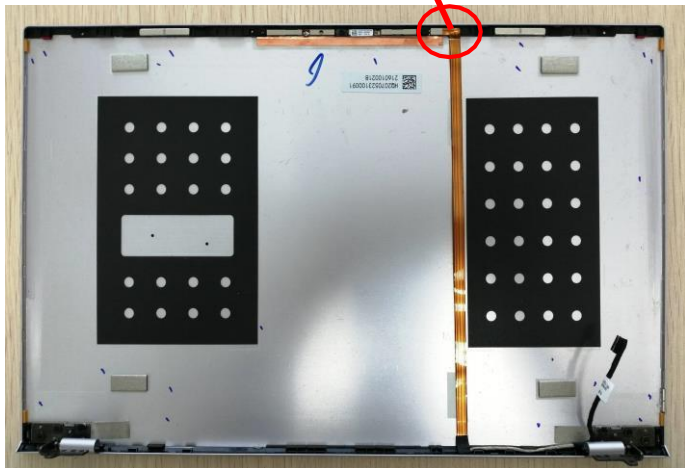
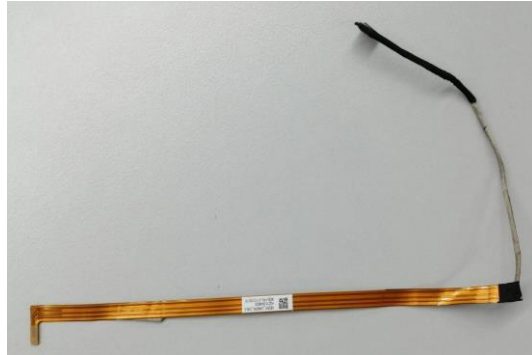
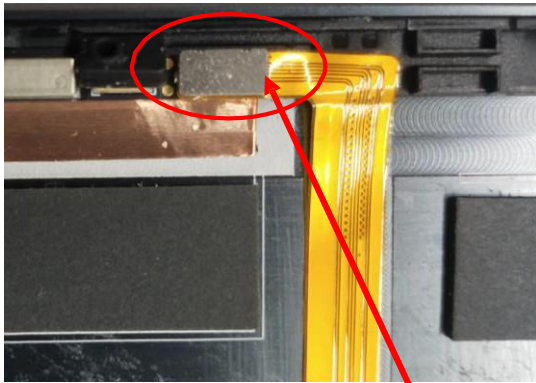
Please be sure to pull out adapter and disconnect the battery.

Step 1 : Disconnect the ccd cabel connector.

Step 2 : Remove the ccd cabel

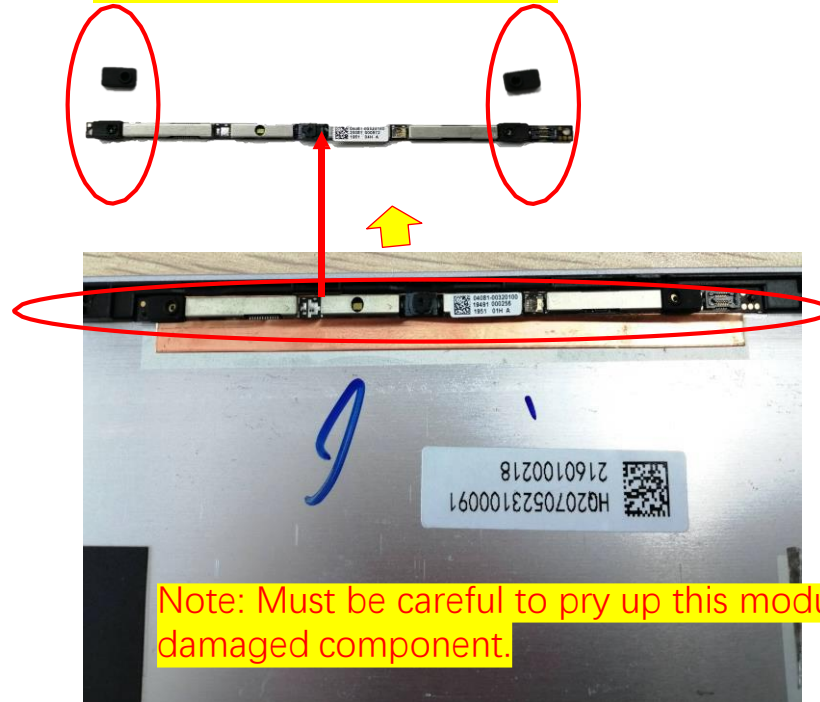
Step 3 : Remove the CCD

1 Disconnect the ccd cabel connector.



2 Remove CCD AND RUBBER *2

The MIC rubber can't be missing



Note: Must be careful to pry up this module, it is easily damaged component.

Below Ingredients which marked ▲ has functional, can't be missing.

