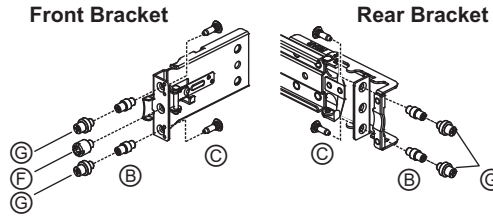


King Slide®

❖ Make sure the spec of rack hole and find the suitable pins from accessory bag.

When using in 9.5mm square hole, install 2 pcs screw ③ and 1pc screw ⑥ on the front bracket ; 2 pcs screw ③ on the rear bracket.

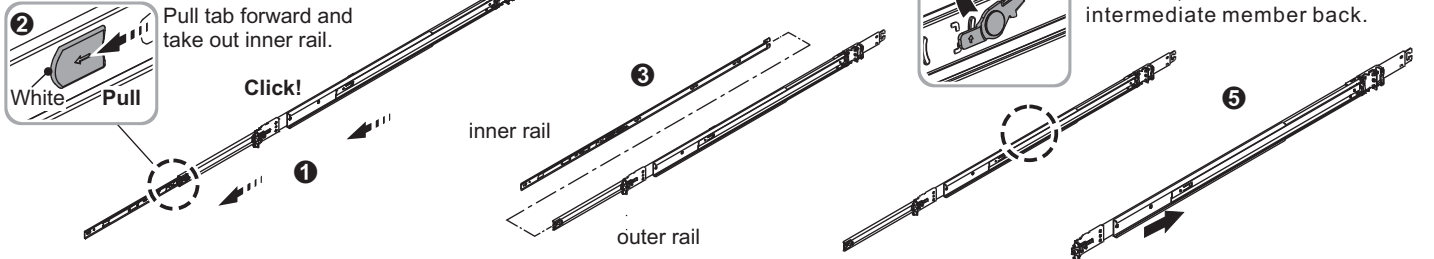
When using in Ø7.1 round hole rack, please remove all the screws on the front and rear brackets. Replace them by screw ②.



Screw Sack		
①	M4x4L-0.7P	
②	Round Hole Pin (For Ø7.1)	
③	Screw Hole Pin (For #10-32)	
④	M5X20L-P0.8	
⑤	#6-32x4L	

Pre-installed		
⑥	Extened Nut.For Shipping	
⑦	For9.5 Square Hole	

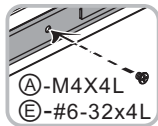
1) Release and detach the inner member from the slide.



2) Attach inner member to the system.

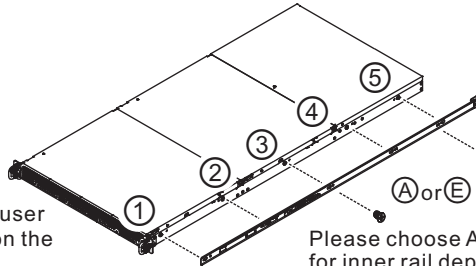
① Key Hole ①-⑤

② Screw Hole



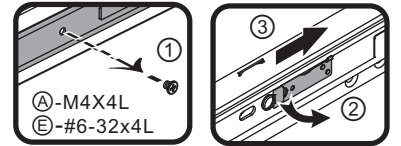
Install the inner member onto the chassis by this direction.

* For safety concern, user can fasten the screw on the end of inner rail while assembling on the chassis.



Please choose A or E screw for inner rail depends on classic spec.

Detach inner rail from standoff



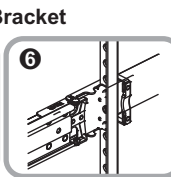
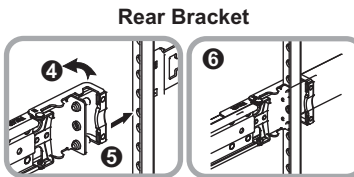
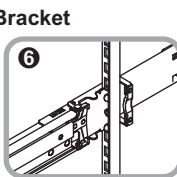
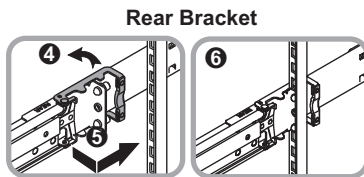
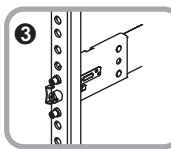
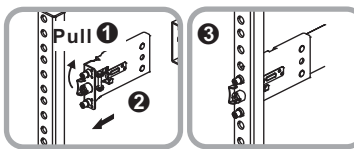
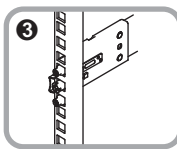
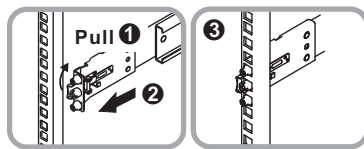
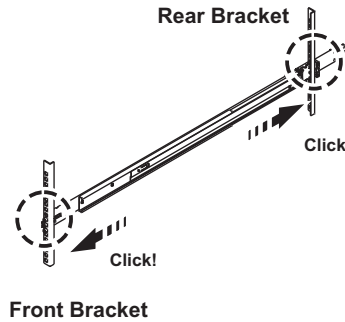
3) Attach outer member to the rack.

Square Hole

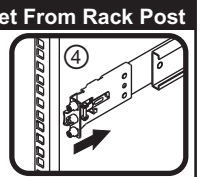
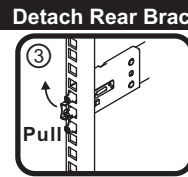
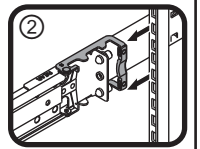
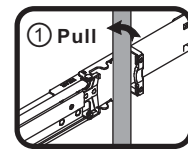
①→②→③→④→⑤→⑥

Round Hole

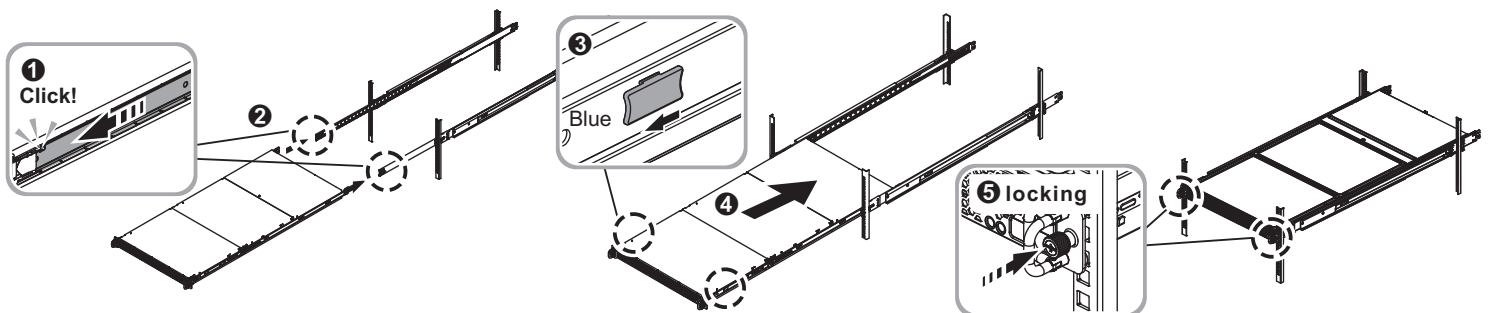
①→②→③→④→⑤→⑥



Detach Rear Bracket From Rack Post



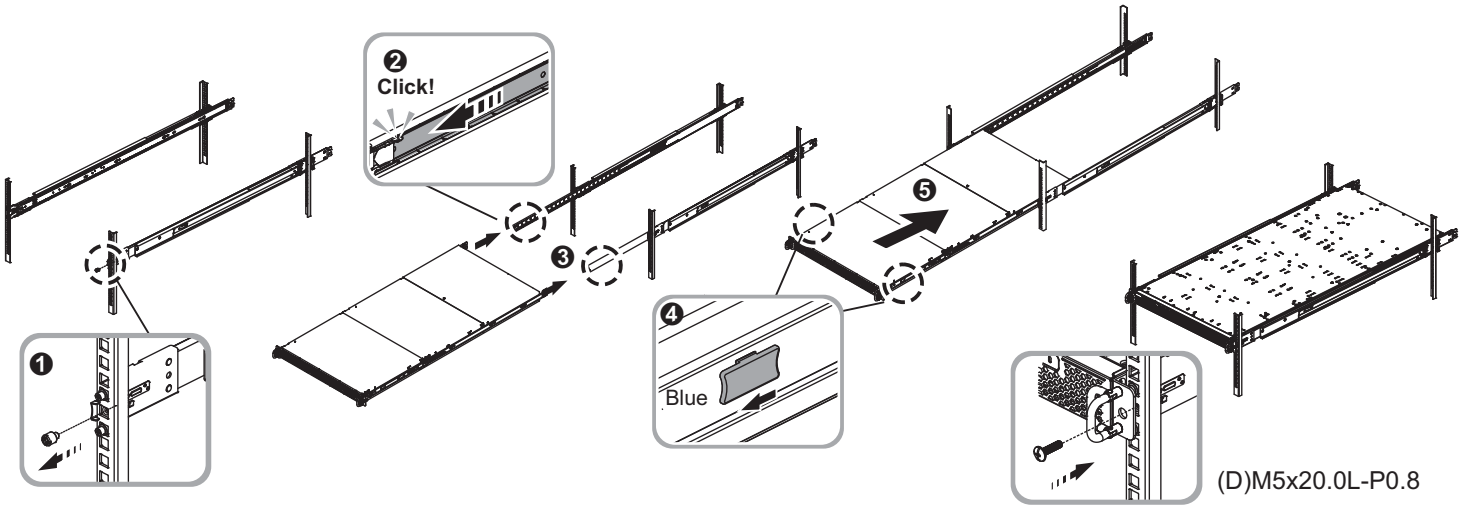
- CAUTION! Verify ball bearing retainer is locked forward.
- Horizontally install system half way into slide rail.
- Slide the blue release tab and push system into rack.
- Tighten chassis with thumb screw.



King Slide®

Warm remind. Without thumb screw on the chassis and under the condition of no shipping requirement, user can fasten the screw ⑤ on the front bracket.

- ① Remove the pre-installed screw ⑤.
- ② CAUTION! Verify ball bearing retainer is locked forward.
- ③ Horizontally install system half way into slide rail.
- ④ Slide the blue release tab and push system into rack.
- ⑤ Tighten chassis with screw ⑤.



Remove the chassis from rack

- ① Remove thumb screw or shipping screws.
- ② Pull out chassis.
- ③ ④ Press the white disconnect tab forward to remove chassis.

