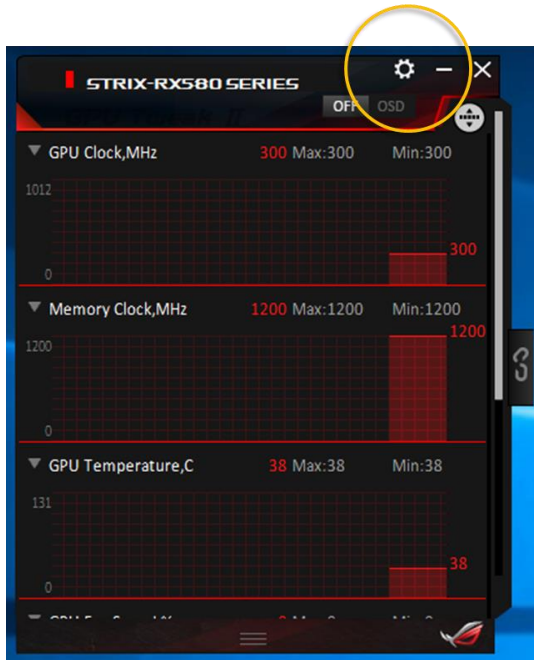
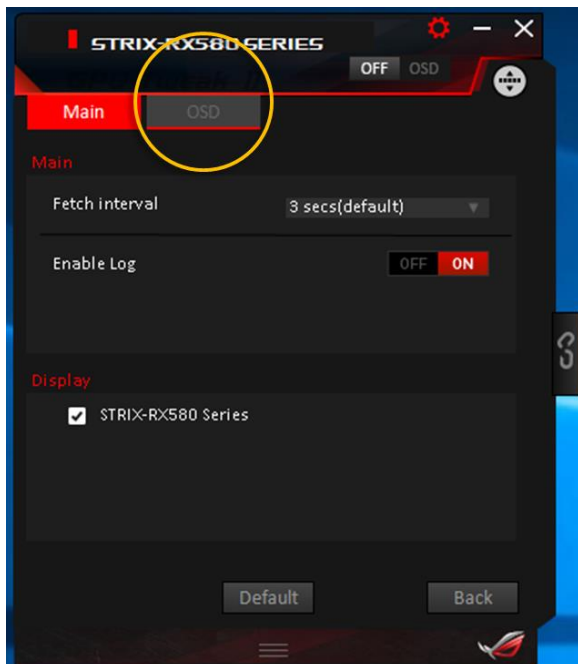


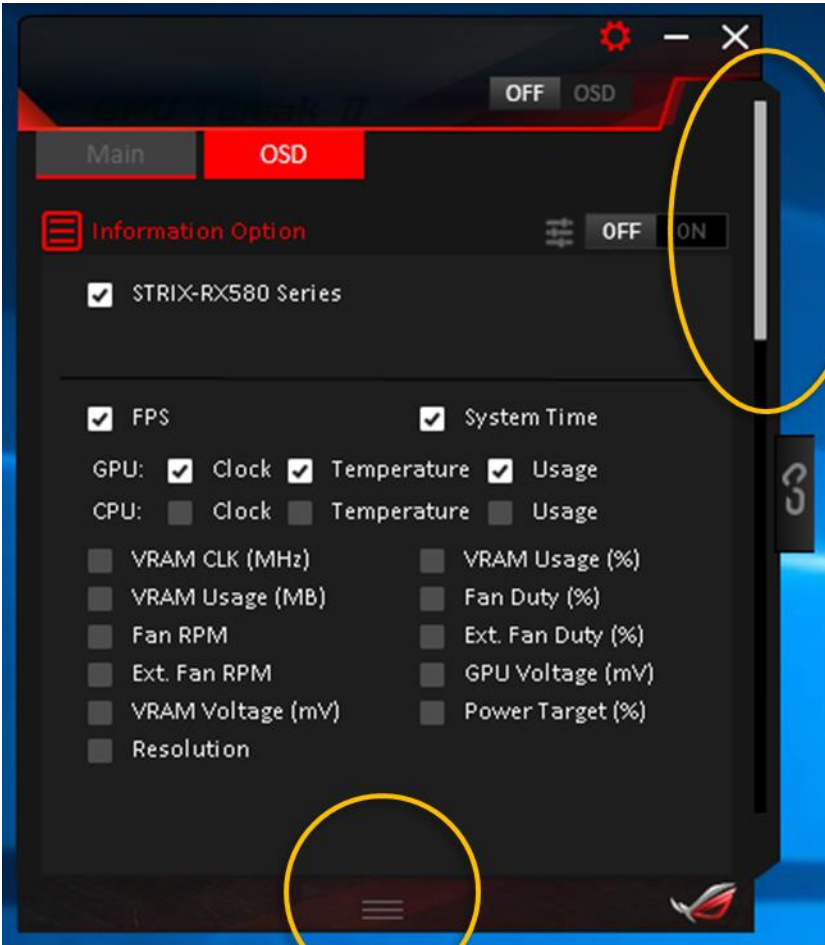
1. On the main page of GPU Tweak II, hit the Settings icon in the top right corner.



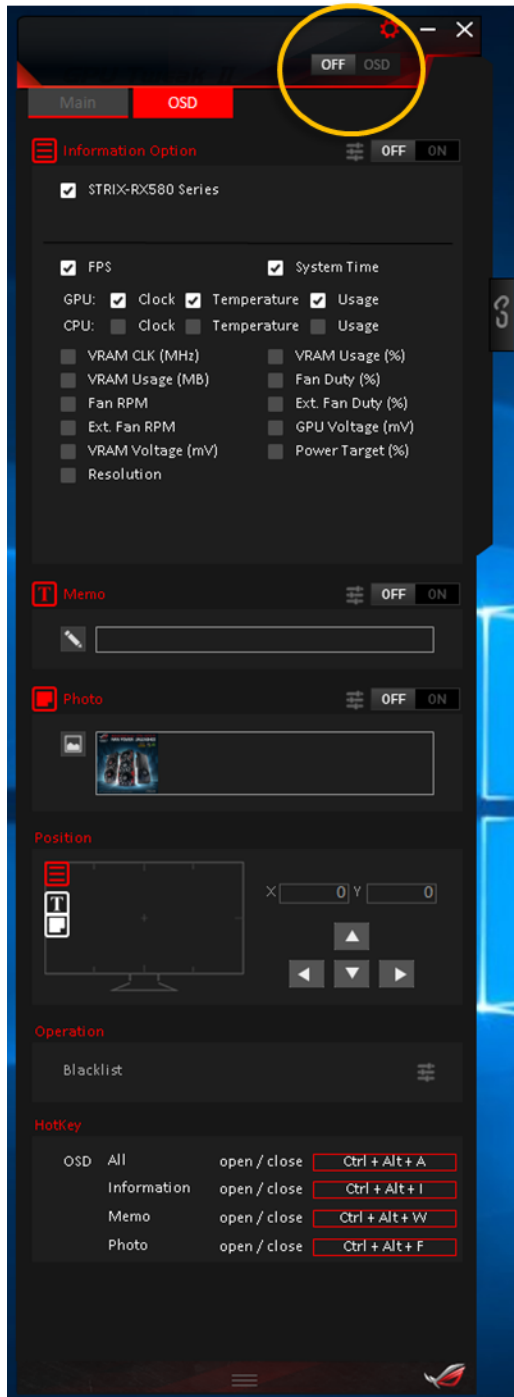
2. On the Settings page, select the OSD tab.



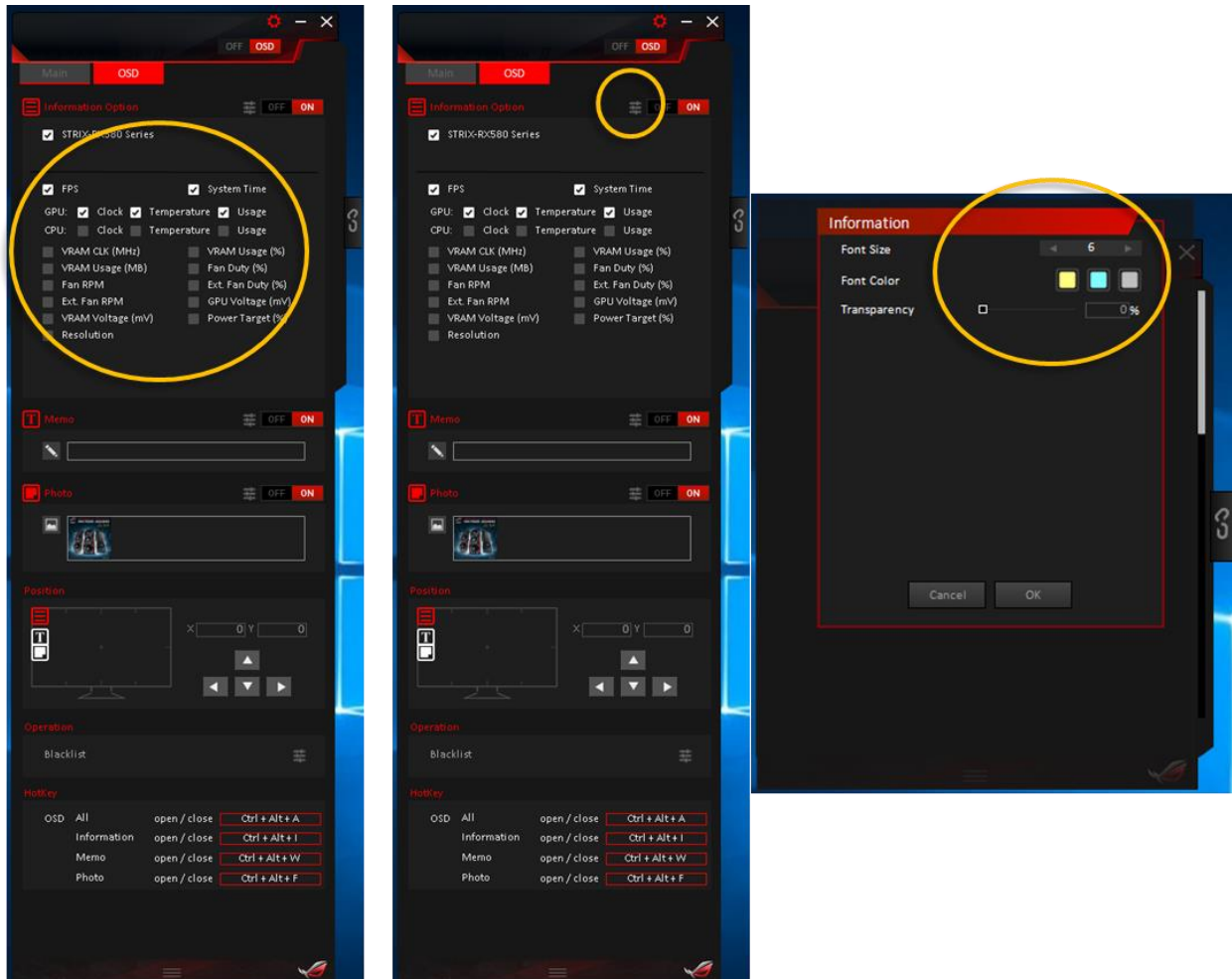
3. Now that you are in the OSD Settings page, you can see several options relating to which information items will be shown onscreen. You can scroll down to see more items by using the scroll bar, or drag the lower button down to extend the UI panel.



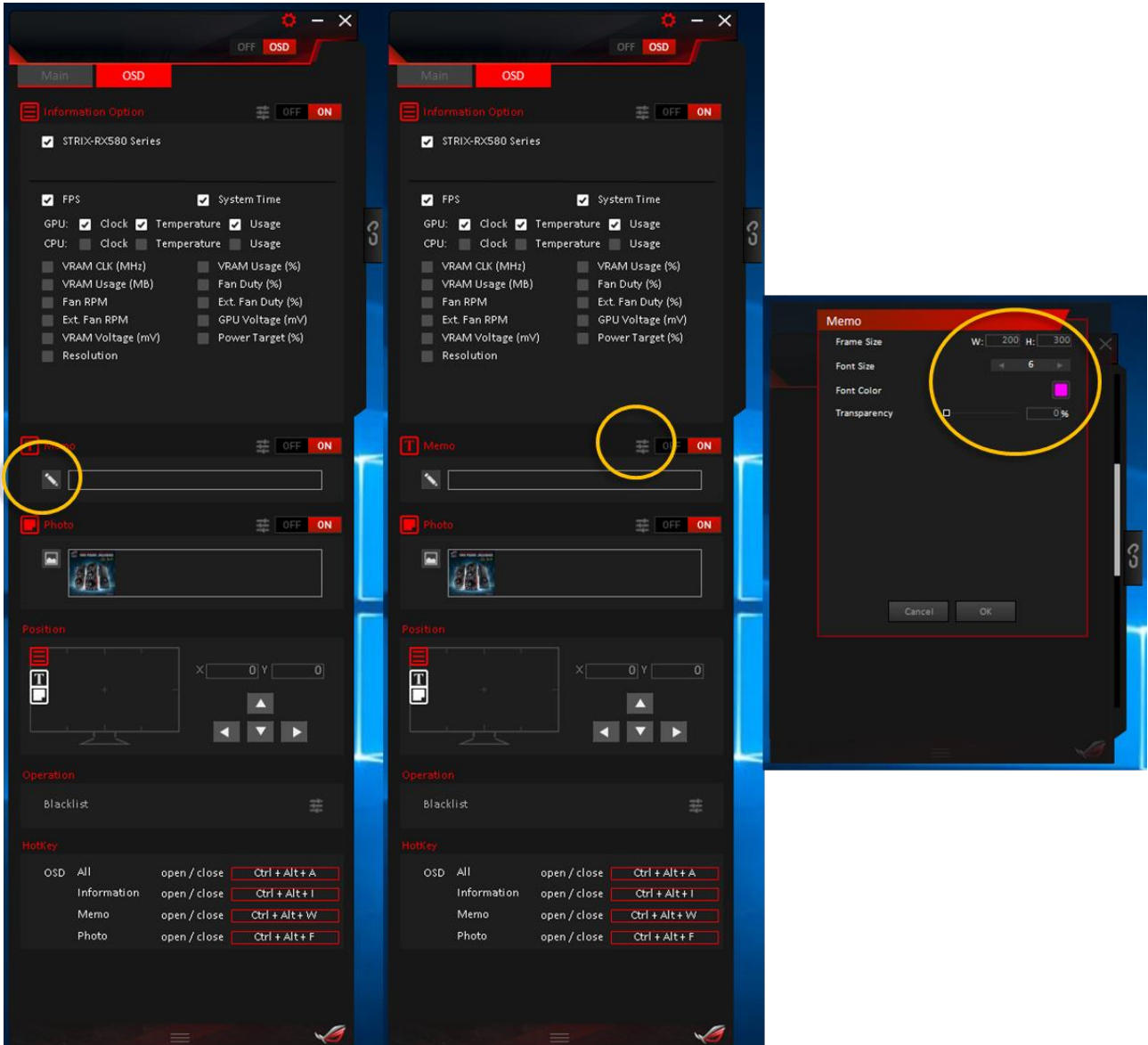
4. Here you can view all of the Settings page items.
You can enable/disable all the OSD functions by hitting the Off / OSD button.



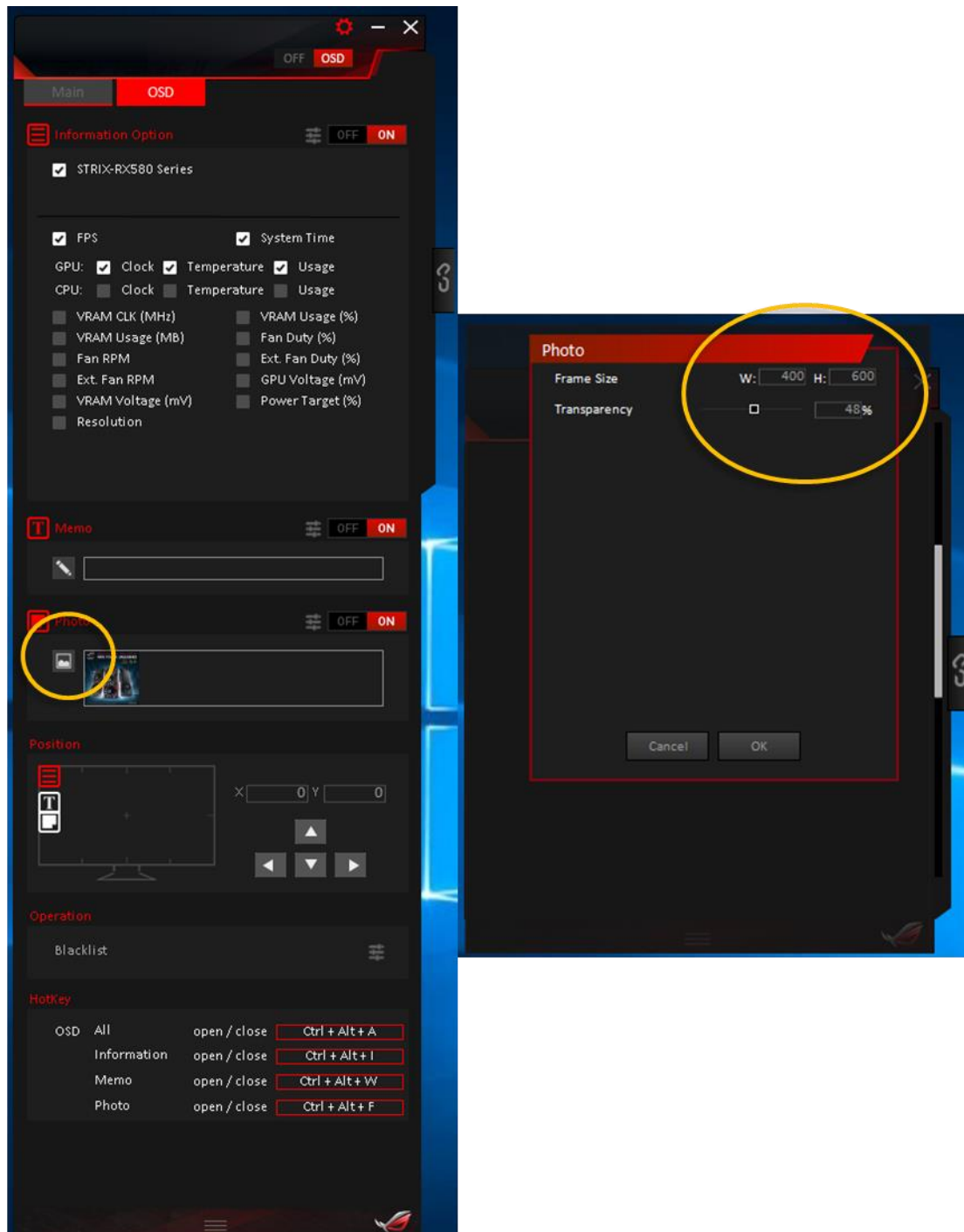
5. In the first section of the Settings page you can select which information items you want to be displayed onscreen. You can also click a secondary settings button to customize visual properties such as font size, color, and transparency.



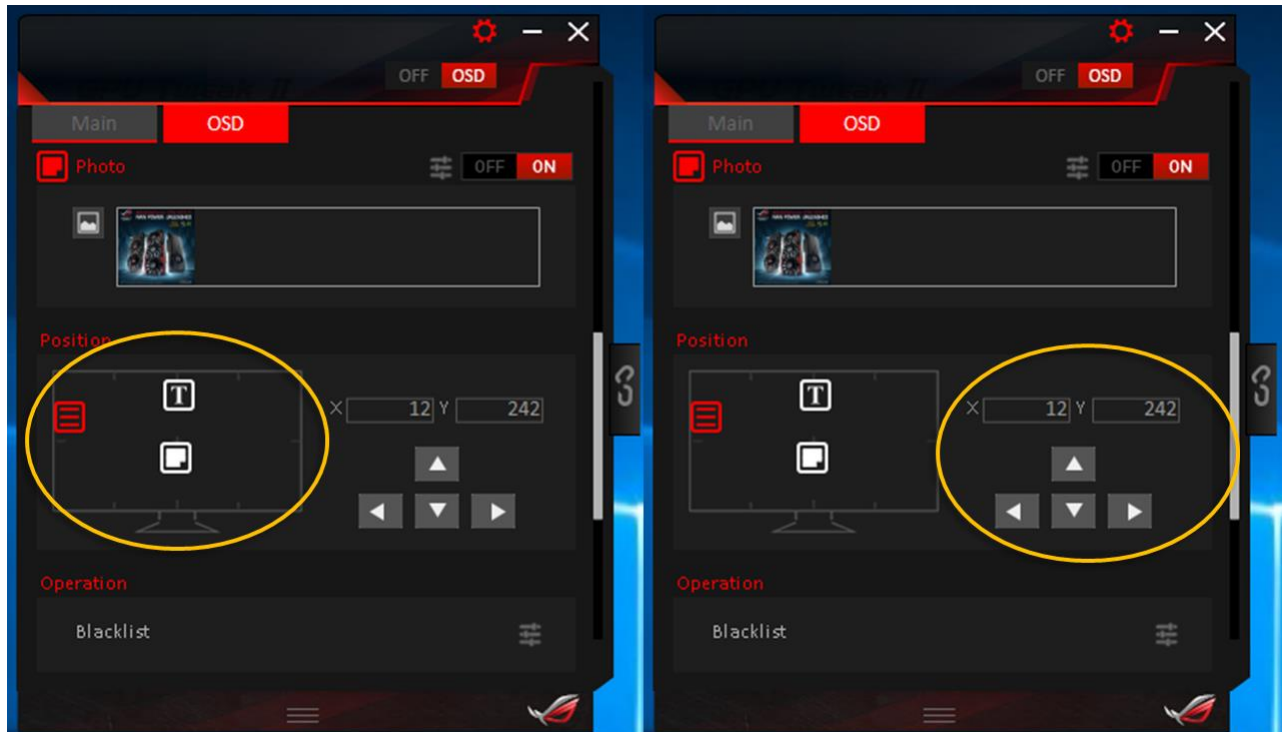
6. The second part of the Settings page involves the Memo feature. Here you can edit the text that will be displayed onscreen.



7. The third section is about the Photo feature. You can choose what photo or image you want to see displayed onscreen. You can also adjust its size and transparency.



8. The fourth section allows you to customize the position of the data, Memo and Photo within the OSD. This can be done by dragging specific items into position, or by double-clicking the edit box to key-in the desired coordinates. You can also use the up, down, left and right buttons.



9. Finally, remember to hit the Apply button to make the desired changes.

Here is an example of how the OSD will be displayed on your screen during gameplay.

