



RT-AC750

Dual-band Wireless-AC750 Router

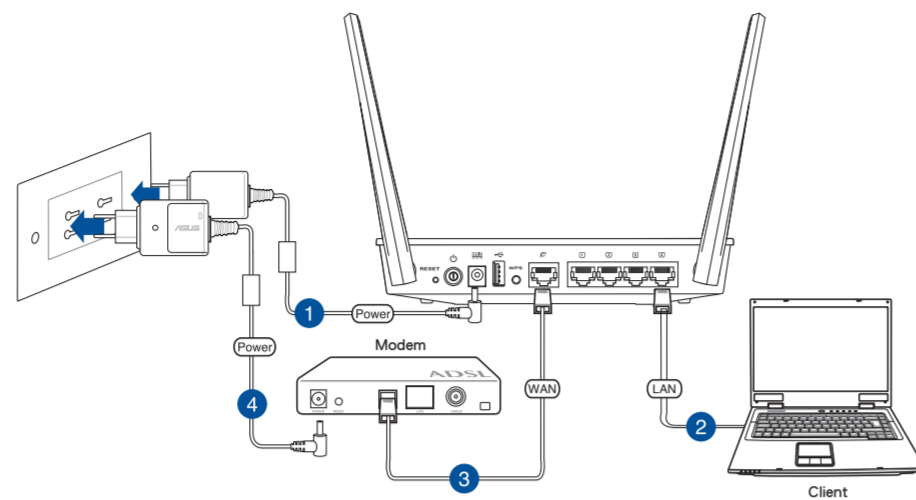


Quick Start Guide

NOTE: For more details on the features of the wireless router, please refer to the user manual included in the Utility CD.

Setting up a Home Network - Router Mode

1. Connect your devices.

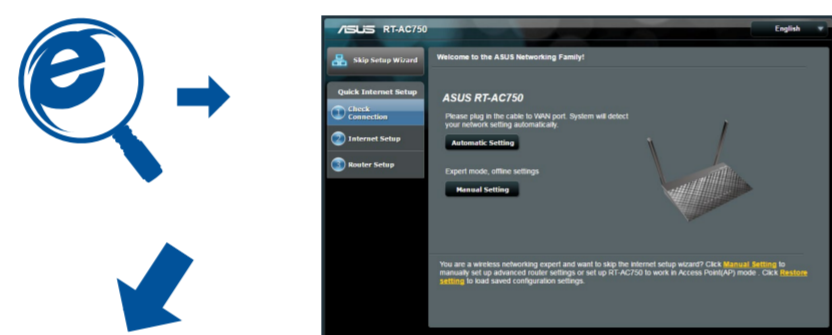


1. Insert your wireless router's AC adapter to the DC-IN port and plug it to a power outlet.
2. Using the bundled network cable, connect your computer to your wireless router's LAN port.
3. Using another network cable, connect your modem to your wireless router's WAN port.
4. Insert your modem's AC adapter to the the DC-IN port and plug it to a power outlet.

IMPORTANT! Ensure that the WAN and LAN LEDs are blinking.

NOTE: Before you proceed, disconnect the wires/cables from your existing modem setup. After two minutes, reconnect the wires/cables.

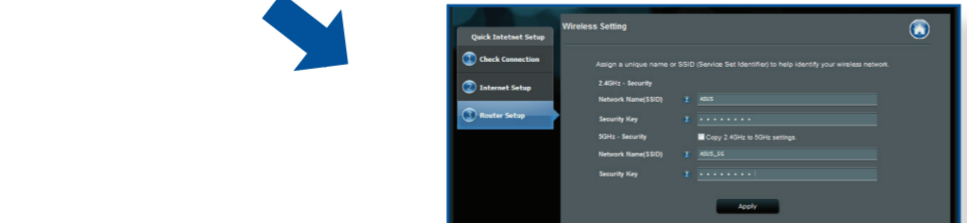
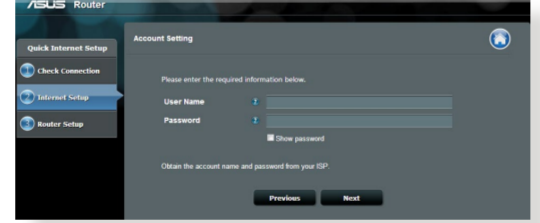
2. Launch the web browser and follow the Quick Internet Setup (QIS) steps.



for Automatic IP (DHCP)



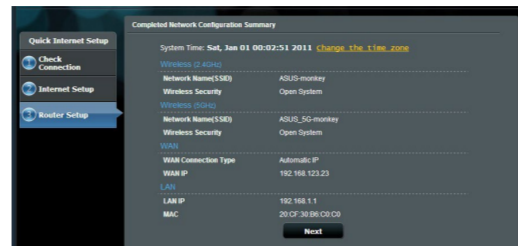
for PPPoE, PPTP, and L2TP



1. If the QIS web page does not appear after launching the web browser, disable the proxy settings on the web browser.
2. If QIS does not launch automatically, follow these steps to manually launch QIS:
 - On your web browser, key in <http://192.168.1.1> or <http://router.asus.com>. Use the default username **admin** and password **admin** to log into the user interface.
 - Click **Quick Internet Setup** on the left panel on the **Network Map** page.
 - The auto-detection of your ISP connection type takes place when you configure the wireless router for the first time or when your wireless router is reset to its default settings.

IMPORTANT! Obtain the necessary information from your ISP about the Internet connection type.

3. Setup complete.



- Français**
1. Connectez les périphériques.
 2. Lancez votre navigateur Web puis suivez les étapes du gestionnaire de configuration rapide d'Internet en ligne (QIS).
 3. La configuration est terminée.

- Deutsch**
1. Schließen Sie Ihre Geräte an.
 2. Starten sie einen Webbrowser und folgen sie den Internet-Schnelleinstellungsschritten (QIS).
 3. Die Einrichtung ist fertig.

- Italiano**
1. Collegare le periferiche.
 2. Avviare il browser web e seguire la procedura QIS (Quick Internet Setup).
 3. La configurazione è stata completata.

- Português do Brasil**
1. Conecte seus dispositivos.
 2. Lance o navegador da web e siga os passos do Quick Internet Setup (QIS).
 3. A instalação foi concluída.

- Česky**
1. Připojte zařízení.
 2. Spusťte webový prohlížeč a postupujte podle kroků Rychlého nastavení Internetu (QIS).
 3. Instalace je dokončena.

- Nederlands**
1. Sluit uw apparaten aan.
 2. Start de webbrowser en volg de QIS-stappen (Quick Internet Setup (snelle internetinstelling)).
 3. De instelling is voltooid.

- Suomi**
1. Kytke laitteet.
 2. Käynnistä verkkoselain ja noudata QIS-asennuksen vaiheita.
 3. Asennus on valmis.

- Magyar**
1. Csatlakoztassa az eszközöket.
 2. Indítsa el a webböngészőt, és kövesse a gyors internetes beállítás (QIS) lépéseit.
 3. A beállítás befejeződött.

- Latviski**
1. Savienojiet savas ierices.
 2. Palaidiet tīmekļa pārlūku un izpildiet Quick Internet Setup (Ātrās interneta palaišanas) (QIS) soļus.
 3. Iestāšana ir pabeigta.

- Bahasa Malaysia**
1. Sambungkan peranti anda.
 2. Lancarkan penyemak imbas web dan ikut langkah-langkah Persediaan Internet Pantas (QIS).
 3. Persediaan selesai.

- Polski**
1. Podłącz swoje urządzenia.
 2. Uruchom przeglądarkę internetową i postępuj zgodnie z poleceniami Szybkiej konfiguracji Internetu (QIS).
 3. Konfiguracja została zakończona.

- Română**
1. Conectați dispozitivele dvs.
 2. Lansați browser-ul web și urmați pașii de Conectare Rapidă la Internet (QIS).
 3. Conectarea este finalizată.

- Español**
1. Conecte sus dispositivos.
 2. Abra su explorador web y siga los pasos indicados por la función Quick Internet Setup rápida de Internet.
 3. Ha finalizado la configuración.

- ไทย**
1. เชื่อมต่ออุปกรณ์ของคุณ
 2. เปิดเว็บเบราว์เซอร์ และทำตามขั้นตอน การตั้งค่าอินเทอร์เน็ตด่วน (QIS)
 3. การตั้งค่าเสร็จสมบูรณ์

- Українська**
1. Підключіть пристрої.
 2. Запустіть браузер і дотримуйтесь інструкцій для Швидкого з'єднання з мережею Інтернет (QIS).
 3. Налаштування завершено.

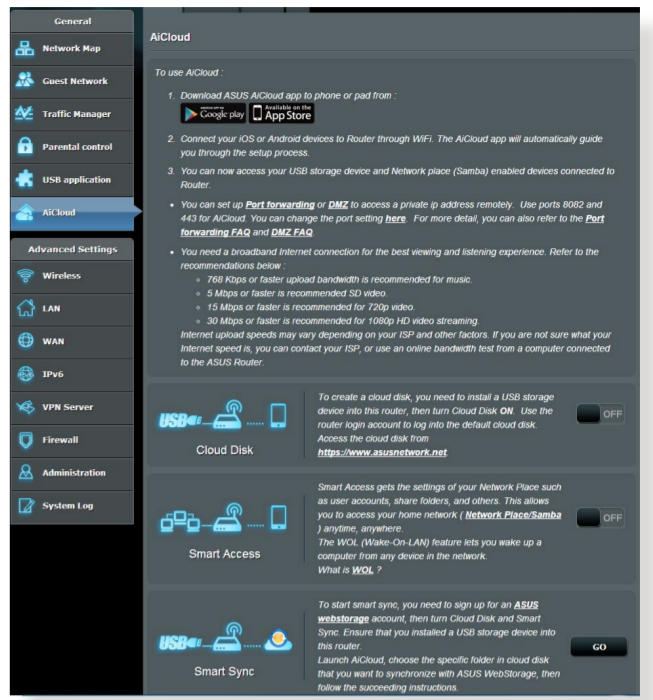
- 繁體中文**
1. 連接裝置。
 2. 開啟網頁瀏覽器並按照快速網際網路設定 (QIS) 的步驟操作。
 3. 設定完成。

Using AiCloud

1. From Google Play Store or Apple Store, download and install the ASUS AiCloud app to your smart device.

Using AiCloud

2. Connect your smart device to your network. Follow the instructions to complete the AiCloud setup process.



Frequently Asked Questions (FAQs)

The client cannot establish a wireless connection with the router.

- Out of Range:**
- Put the router closer to the wireless client.
 - Try to change the channel settings.

Authentication:

- Use wired connection to connect to the router.
- Check the wireless security settings.
- Press the Reset button at the rear panel for more than five seconds.

Cannot find the router:

- Press the Reset button at the rear panel for more than five seconds.
- Check the setting in the wireless adapter such as SSID and encryption settings.

Cannot access the Internet via wireless LAN adapter.

- Move the router closer to the wireless client.
- Check whether the wireless adapter is connected to the correct wireless router.
- Check whether the wireless channel in use conforms to the channels available in your country/area.
- Check the encryption settings.
- Check if the ADSL or Cable connection is correct.
- Retry using another Ethernet cable.

If the ADSL "LINK" light blinks continuously or stays off, Internet access is not possible - the Router is unable to establish a connection with the ADSL network.

- Ensure that all your cables are all properly connected .
- Disconnect the power cord from the ADSL or cable modem, wait a few minutes, then reconnect the cord.
- If the ADSL light continues to blink or stays OFF, contact your ADSL service provider.

Network name or encryption keys are forgotten.

- Try setting up the wired connection and configuring the wireless encryption again.
- Press the Reset button of the wireless router for more than five seconds.
- Factory default settings:

User name / Password: admin / admin	IP address: 192.168.1.1	SSID: ASUS
---	-----------------------------------	----------------------

Where can I find more information about the wireless router?

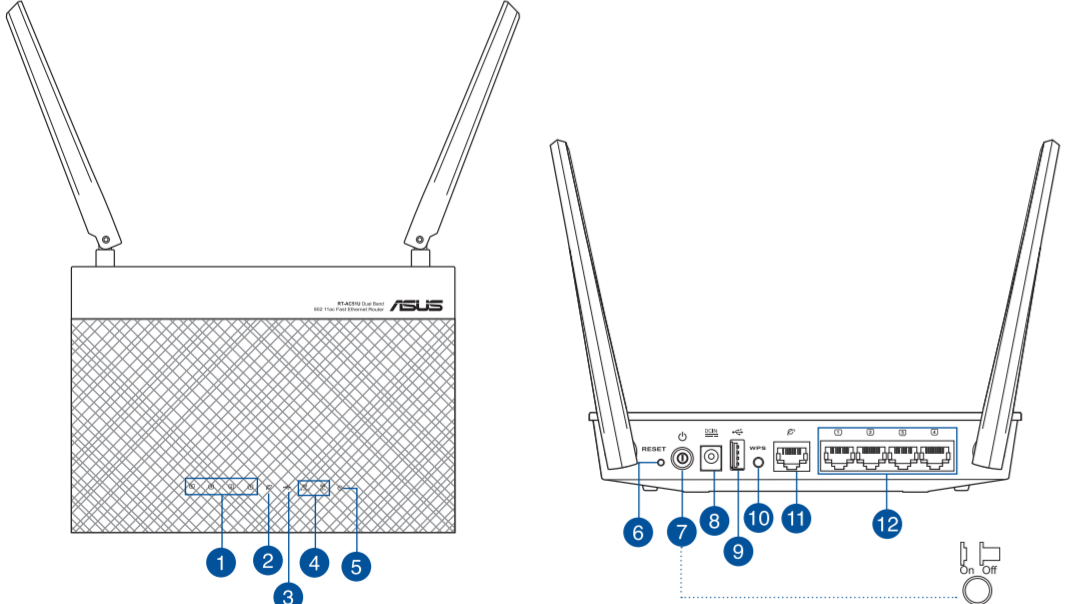
- User Manual in the support CD
- Online FAQ site: <http://support.asus.com/faq>
- Technical Support site: <http://support.asus.com>
- Customer Hotline: Refer to the Support Hotline in this Quick Start Guide

Package Contents

- ✓ RT-AC750 Wireless Router
- ✓ Network cable (RJ-45)
- ✓ Support CD (User Manual/utilities)
- ✓ AC adapter
- ✓ Quick Start Guide
- ✓ Warranty card

NOTE: If any of the items is damaged or missing, please contact your retailer.

A quick look at your RT-AC750



1) LAN 1~4 LED	5) Power LED	9) USB port
2) WAN (Internet) LED	6) Reset button	10) WPS button
3) USB LED	7) Power switch	11) WAN (Internet) port
4) 2.4GHz / 5GHz LED	8) Power (DC-IN) port	12) LAN 1~4 ports

CAUTION! DO NOT throw this product in municipal waste. This product has been designed to enable proper reuse of parts and recycling. This symbol of the crossed out wheeled bin indicates that the product (electrical and electronic equipment) should not be placed in municipal waste. Check local regulations for disposal of electronic products.

