



Index

1. English	1
2. Български.....	5
3. Český	9
4. Nederlands.....	13
5. Eesti	17
6. Suomi	21
7. Français	25
8. Deutsch	29
9. Ελληνικά	33
10. Magyar	37
11. Bahasa Indonesia	41
12. Italiano.....	45
13. Polski.....	49
14. Português.....	53
15. Română.....	57
16. Русский	61
17. Slovensky	65
18. Español	69
19. Ήιη.....	73
20. Türkçe	77
21. Українська	81
22. 한국어	85
23. 日本語.....	89
24. 繁體中文.....	93
25. 简体中文.....	97





WL-330gE in a Hotspot

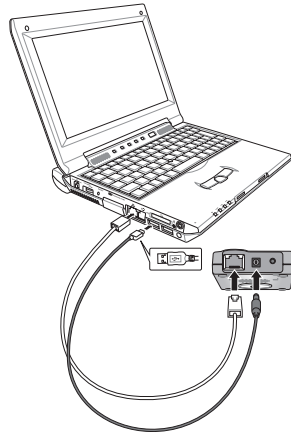
With WL-330gE's "Hotspot Mode" under Gateway Mode, not only can your laptop get on the Internet but your (or your friend's) other WiFi devices (PDA, PSP, or WiFi phone) can access the Internet without extra cost.



How to share Internet connection using WL-330gE in a hotspot?

Before you configure your WL-330gE:

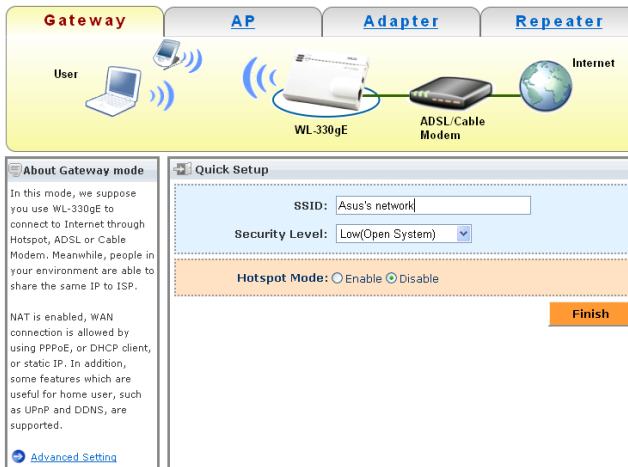
1. Power on your WL-330gE through the attached USB power cord.
2. Connect the WL-330gE to your laptop through an Ethernet (RJ45) cable.
3. Open the Internet browser in your computer and type in 192.168.1.220 in the address box.



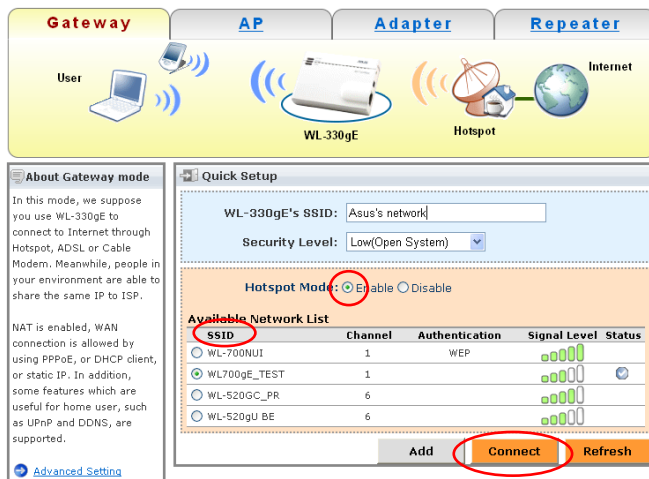
Connect your WL-330gE to the hotspot:

1. By default, "Gateway Mode" is displayed on the main WL-330gE setup page. If not, please choose the "Gateway Mode" tablet.
2. Under "Gateway Mode", enter any name you wish as WL-330gE's SSID (your network's name). For example: ASUS's network.
3. Select the Security Level you wish. For example: Low(Open System)





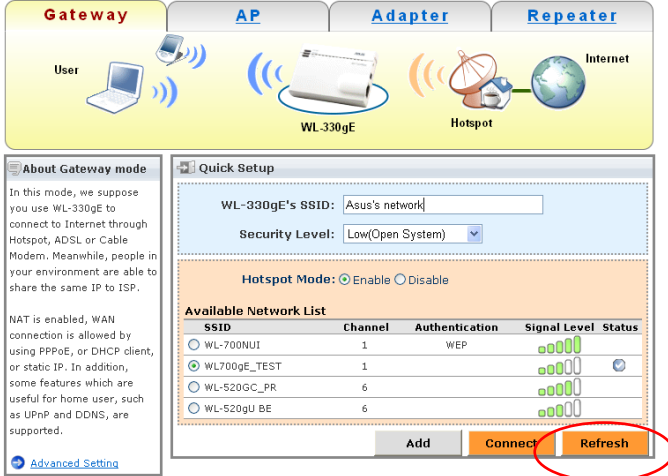
4. Select "Enable" Hotspot Mode. Then the available hotspot SSID list will pop up.



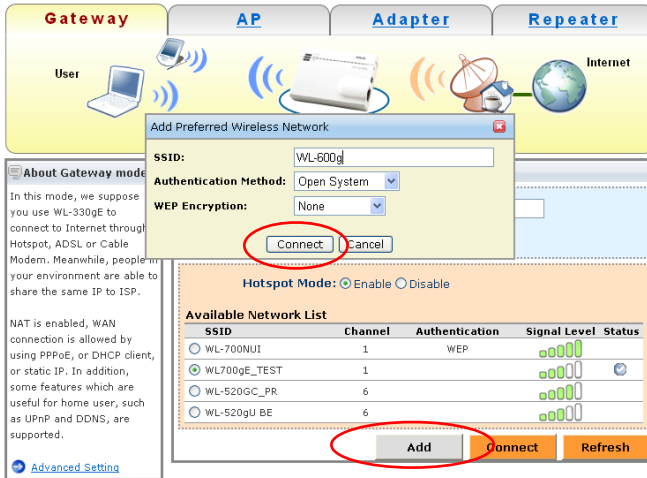
5. Choose the hotspot SSID (the hotspot's name) you wish to connect
6. Click on the "Connect" button.

!! P.S.: If your desired Hotspot SSID is not listed

1. Click on “Refresh” to make sure that all the Hotspot SSID around are shown.



2. If still not shown, please click on “Add” to manually key in (choose) the SSID you wish to connect, Authentication, and Encryption methods. Then click on “Connect”.



Now your WL-330gE is ready to share hotspot Internet connection among your or your friends' other wireless devices.

Share Hotspot Internet connection among your network users through WL-330gE:

Just wirelessly connect these devices to WL-330gE's SSID you designated in step 2 then hotspot's Internet connection can be shared without extra cost!



You can detach the RJ-45 cable between you laptop and WL-330gE after configuration is finished.



WL-330gE в режим “Hotspot”

С помощта на режим “Hotspot” на WL-330gE, когато сте в режим “Gateway” не само вашия лаптоп може да се свърже с Интернет, а също и Вашите (или тези на вашите приятели) други WiFi устройства (PDA, PSP или WiFi телефон) могат да се свържат с Интернет без допълнителни разходи.

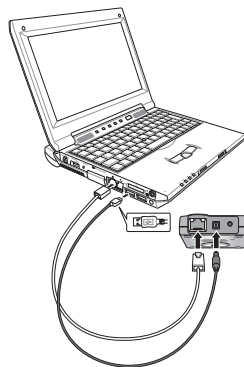


Български

Как да се сподели Интернет връзката чрез използването на WL-330gE в hotspot (обект за безжичен Интернет достъп)?

Преди да конфигурирате вашето WL-330gE устройство:

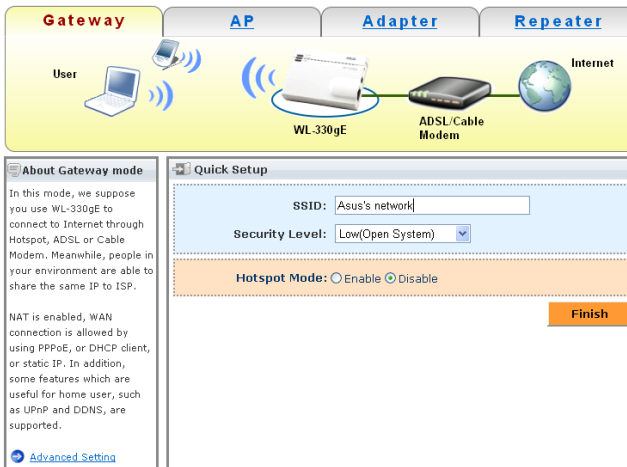
1. Подайте захранване на WL-330gE чрез прикрепеният захранващ кабел USB.
2. Свържете WL-330gE с вашия лаптоп с помощта на Ethernet (RJ45) кабел.
3. Стартирайте Интернет браузъра на вашия компютър и въведете 192.168.1.220 в адресното поле.



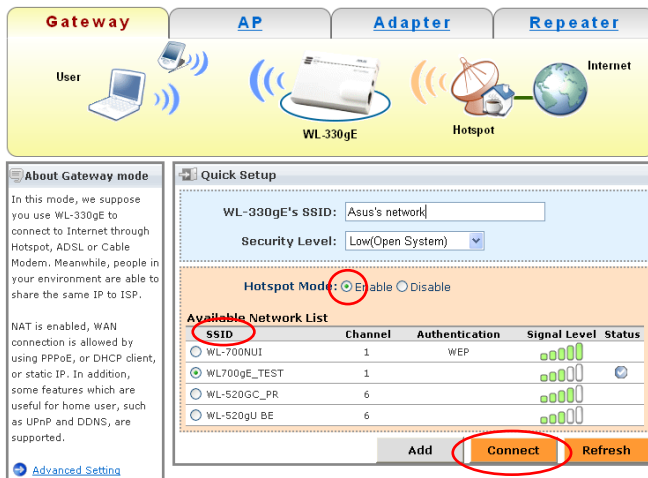
Свържете вашето WL-330gE устройство в hotspot:

1. По подразбиране “Gateway Mode” (режим Gateway) се изписва на основната страница за инсталиране на WL-330gE. Ако това не е така, моля изберете поле “Gateway Mode”.
2. След като сте в режим “Gateway” въведете всяко име, което желаете като WL-330gE’s SSID (името на вашата мрежа). Например: ASUS Network (мрежа на ASUS).
3. Изберете нивото на сигурност, което желаете. Например: Low (Open System) – ниско (отворена система).





4. Изберете “Enable” (Разрешаване) на режим “Hotspot”. След това ще се появи списъка с налични SSID.



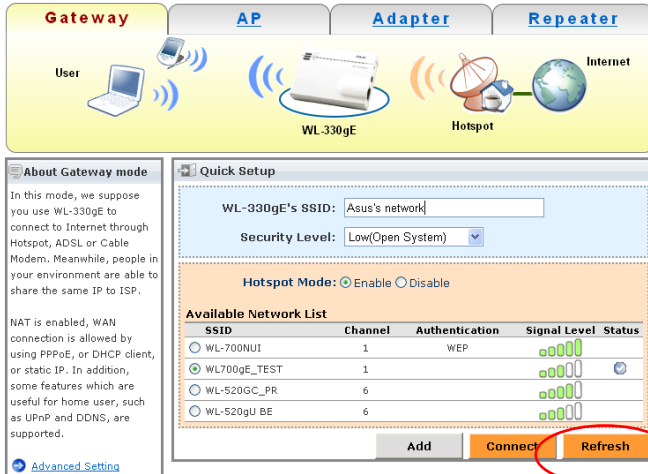
5. Изберете SSID за съответния hotspot (hotspot името) с което искате да се свържете.
6. Цракнете върху бутон “Connect” (Свързване).



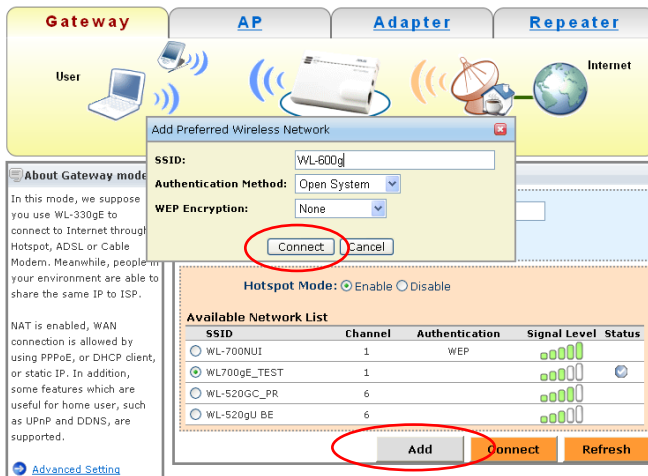


!! ПП: Ако желаният SSID за hotspot не е в списъка

1. Щракнете върху “Refresh” (Опресняване) за да се уверите, че SSID за hotspot са показани.



2. Ако все още не се виждат, моля щракнете на “Add” (Добавяне) за да въведете (изберете) ръчно SSID с което желаете да се свържете, методите на потвърждение и кодиране. След това щракнете върху “Connect” (Свързване).





Сега вече вашето устройство WL-330gE е готово да споделя hotspot Интернет връзката с Вас или с безжичните устройства на вашите приятели.

Споделяне на hotspot Интернет връзката с вашите мрежови потребители чрез WL-330gE:

Просто свържете безжично тези устройства с SSID на WL-330gE, които сте определили в стъпка 2, след това hotspot Интернет връзката може да се сподели без допълнителни разходи!



Можете да прекъснете връзката между WL-330gE и вашия лаптоп след завършване на конфигурирането.



WL-330gE jako aktivní bod

S režimem „aktivního bodu“ směrovače WL-330gE v režimu brány má přístup k Internetu nejenom váš notebook, ale také další vaše zařízení WiFi (a zařízení vašich přátel) (PDA, PSP nebo telefon WiFi) mohou přistupovat k Internetu bez dalších poplatků.



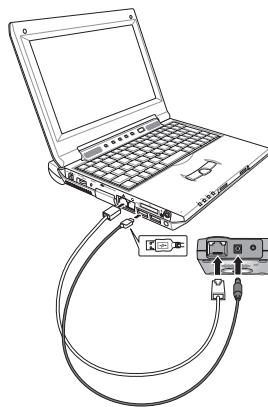
Jak sdílet připojení k Internetu za použití WL-330gE jako aktivního bodu?

Před konfigurací směrovače WL-330gE:

1. Zapněte směrovač WL-330gE prostřednictvím připojeného napájecího kabelu USB.
2. Připojte směrovač WL-330gE k notebooku prostřednictvím kabelu Ethernet (RJ45).
3. Otevřete v počítači webový prohlížeč a do adresního řádku zadejte adresu 192.168.1.220.

Připojení směrovače WL-330gE k aktivnímu bodu:

1. Na hlavní stránce nastavení směrovače WL-330gE se ve výchozí konfiguraci zobrazí „Gateway Mode“ (Režim brány). Pokud ne, zvolte kartu „Gateway Mode“ (Režim brány).
2. V části „Gateway Mode“ (Režim brány) zadejte libovolný název, který chcete používat jako síťový název (SSID) směrovače WL-330gE (název vašeho počítače). Příklad: Síť ASUS.
3. Vyberte požadovanou úroveň zabezpečení. Příklad: Nízká (otevřený systém).



Česky



Gateway
AP
Adapter
Repeater

User

WL-330gE

ADSL/Cable Modem

Internet

About Gateway mode

In this mode, we suppose you use WL-330gE to connect to Internet through Hotspot, ADSL or Cable Modem. Meanwhile, people in your environment are able to share the same IP to ISP.

NAT is enabled, WAN connection is allowed by using PPPoE, or DHCP client, or static IP. In addition, some features which are useful for home user, such as UPnP and DDNS, are supported.

[Advanced Setting](#)

Quick Setup

SSID:

Security Level:

Hotspot Mode: ☐ Enable ☒ Disable

Finish

4. Vyberte možnost „Enable“ (Aktivovat) režim aktivního bodu. Zobrazí se seznam síťových názvů (SSID) dostupných aktivních bodů.

Gateway
AP
Adapter
Repeater

User

WL-330gE

Hotspot

Internet

About Gateway mode

In this mode, we suppose you use WL-330gE to connect to Internet through Hotspot, ADSL or Cable Modem. Meanwhile, people in your environment are able to share the same IP to ISP.

NAT is enabled, WAN connection is allowed by using PPPoE, or DHCP client, or static IP. In addition, some features which are useful for home user, such as UPnP and DDNS, are supported.

[Advanced Setting](#)

Quick Setup

WL-330gE's SSID:

Security Level:

Hotspot Mode: ☒ Enable ☐ Disable

SSID	Channel	Authentication	Signal Level	Status
WL-700NU1	1	WEP	<div style="width: 100%; height: 10px; background: linear-gradient(to right, green, yellow, red);"></div>	
WL700gE_TEST	1		<div style="width: 100%; height: 10px; background: linear-gradient(to right, green, yellow, red);"></div>	
WL-520GC_PR	6		<div style="width: 100%; height: 10px; background: linear-gradient(to right, green, yellow, red);"></div>	
WL-520GU BE	6		<div style="width: 100%; height: 10px; background: linear-gradient(to right, green, yellow, red);"></div>	

5. Zvolte síťový název (SSID) aktivního bodu (název aktivního bodu), který chcete připojit.

6. Klepněte na tlačítko „Connect“ (Připojit).

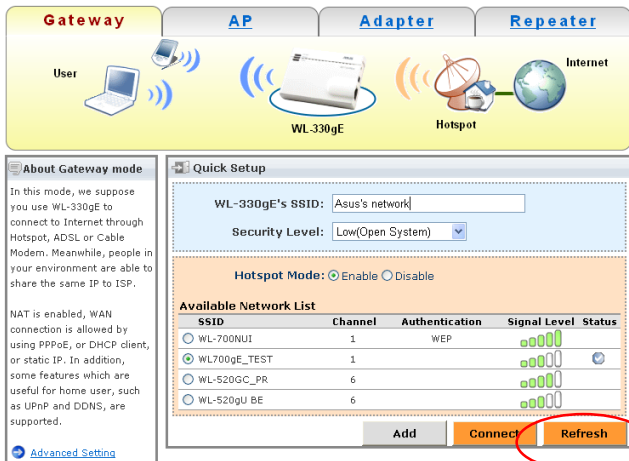
10



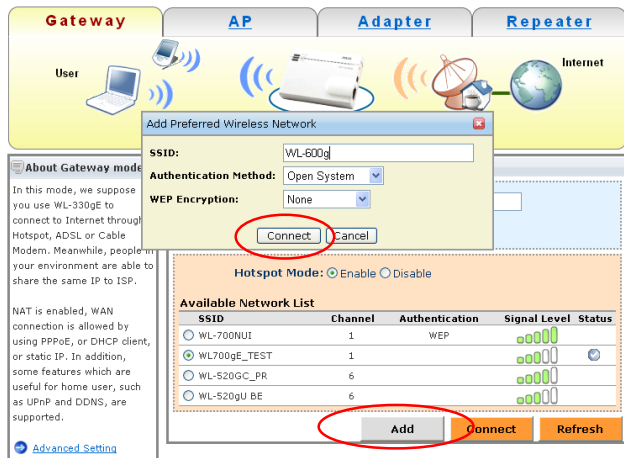


!! P.S. Pokud síťový název (SSID) aktivního bodu není uveden v seznamu

1. Klepněte na tlačítko „Refresh“ (Aktualizovat), aby se zobrazily síťové názvy (SSID) všech aktivních bodů v okolí.



2. Pokud přesto není uveden, klepnutím na tlačítko „Add“ (Přidat) zadejte ručně (nebo zvolte) síťový název (SSID) bodu, který chcete připojit, a vyberte metodu ověřování a šifrování. Potom klepněte na tlačítko „Connect“ (Připojit).



Česky





Nyní je směrovač WL-330gE připraven ke sdílení připojení k Internetu prostřednictvím aktivního bodu mezi vašimi bezdrátovými zařízeními nebo bezdrátovými zařízeními vašich přátel.

Sdílení připojení k Internetu prostřednictvím aktivního bodu mezi uživateli sítě pomocí směrovače WL-330gE:

Stačí bezdrátově připojit tato zařízení k síťovému názvu směrovače WL-330gE, které jste přiřadili v kroku 2 a připojení k Internetu prostřednictvím aktivního bodu lze sdílet bez dalších poplatků!



Po dokončení konfigurace můžete směrovač WL-330gE odpojit od notebooku.

Česky





WL-330gE in een Hotspot

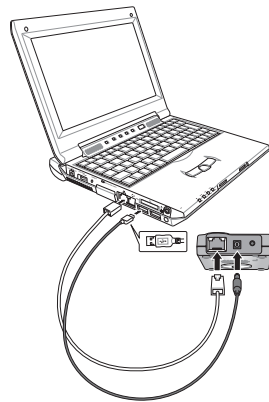
Met de "Hotspot-modus" van de WL-330gE's in de gatewaymodus maakt uw laptop niet alleen verbinding met het internet maar andere WiFi-apparaten (van u of uw vrienden), bijvoorbeeld PDA, PSP of WiFi-telefoon kunnen ook zonder extra kosten het internet gebruiken.



Hoe deelt u een internetverbinding met een WL-330gE in een hotspot?

Voordat u de WL-330gE configureert:

1. Schakel de WL-330gE met de aangesloten usb-voedingskabel.
2. Sluit de WL-330gE aan op de laptop met een Ethernetkabel (RJ45).
3. Open de internetbrowser op de computer en type 192.168.1.220 in het adresveld.



Nederlands

Sluit de WL-330gE aan op de hotspot:

1. De standaard is dat de "Gatewaymodus" verschijnt op de hoofdpagina van de WL-330gE. Zo niet, kies dan het "Gatewaymodus"-tablet.
2. Geef onder "Gatewaymodus" een naam op die de SSID (uw netwerknaam) van de WL-330gE moet worden, bijvoorbeeld ASUS' netwerk.
3. Selecteer het gewenste veiligheidsniveau, bijvoorbeeld Laag (open systeem).



Gateway **AP** **Adapter** **Repeater**

User WL-330gE ADSL/Cable Modem Internet

About Gateway mode

In this mode, we suppose you use WL-330gE to connect to Internet through Hotspot, ADSL or Cable Modem. Meanwhile, people in your environment are able to share the same IP to ISP.

NAT is enabled, WAN connection is allowed by using PPPoE, or DHCP client, or static IP. In addition, some features which are useful for home user, such as UPnP and DDNS, are supported.

[Advanced Setting](#)

Quick Setup

SSID:

Security Level:

Hotspot Mode: ☐ Enable ☒ Disable

Finish

4. Selecteer Hotspotmodus “Enable” De lijst van beschikbare hotspots verschijnt.

Gateway **AP** **Adapter** **Repeater**

User WL-330gE Hotspot Internet

About Gateway mode

In this mode, we suppose you use WL-330gE to connect to Internet through Hotspot, ADSL or Cable Modem. Meanwhile, people in your environment are able to share the same IP to ISP.

NAT is enabled, WAN connection is allowed by using PPPoE, or DHCP client, or static IP. In addition, some features which are useful for home user, such as UPnP and DDNS, are supported.

[Advanced Setting](#)

Quick Setup

WL-330gE's SSID:

Security Level:

Hotspot Mode: ☒ Enable ☐ Disable

Available Network List

SSID	Channel	Authentication	Signal Level	Status
<input type="radio"/> WL-700NU1	1	WEP	<div><div></div><div></div><div></div><div></div><div></div></div>	
<input checked="" type="radio"/> WL700gE_TEST	1		<div><div></div><div></div><div></div><div></div><div></div></div>	
<input type="radio"/> WL-520GC_PR	6		<div><div></div><div></div><div></div><div></div><div></div></div>	
<input type="radio"/> WL-520gU BE	6		<div><div></div><div></div><div></div><div></div><div></div></div>	

Add **Connect** **Refresh**

5. Kies de SSID (naam) van de hotspot waarmee u verbinding wilt maken.
6. Klik op de knop “Connect”.

14





!! P.S. Als de gewenste hotspot er niet bijstaat

1. Klik op “Refresh” om zeker te weten dat alle hotspots in de omgeving getoond worden.

Gateway **AP** **Adapter** **Repeater**

User **WL-330gE** Internet

About Gateway mode

In this mode, we suppose you use WL-330gE to connect to Internet through Hotspot, ADSL or Cable Modem. Meanwhile, people in your environment are able to share the same IP to ISP.

NAT is enabled, WAN connection is allowed by using PPPoE, or DHCP client, or static IP. In addition, some features which are useful for home user, such as UPnP and DDNS, are supported.

[Advanced Setting](#)

Quick Setup

WL-330gE's SSID:

Security Level:

Hotspot Mode: ☒ Enable ☐ Disable

Available Network List

SSID	Channel	Authentication	Signal Level	Status
<input type="radio"/> WL-700NUI	1	WEP		
<input checked="" type="radio"/> WL700gE_TEST	1			
<input type="radio"/> WL-520GC_PR	6			
<input type="radio"/> WL-520gU BE	6			

2. Staat hij er nog niet bij, klik dan op “Add” en geef handmatig de SSID op waarmee u verbinding wilt maken. Kies ook de methodes voor Authenticatie en Versleuteling. Klik daarna op “Connect”.

Gateway **AP** **Adapter** **Repeater**

User **WL-330gE** Internet

About Gateway mode

In this mode, we suppose you use WL-330gE to connect to Internet through Hotspot, ADSL or Cable Modem. Meanwhile, people in your environment are able to share the same IP to ISP.

NAT is enabled, WAN connection is allowed by using PPPoE, or DHCP client, or static IP. In addition, some features which are useful for home user, such as UPnP and DDNS, are supported.

[Advanced Setting](#)

Add Preferred Wireless Network

SSID:

Authentication Method:

WEP Encryption:

Hotspot Mode: ☒ Enable ☐ Disable

Available Network List

SSID	Channel	Authentication	Signal Level	Status
<input type="radio"/> WL-700NUI	1	WEP		
<input checked="" type="radio"/> WL700gE_TEST	1			
<input type="radio"/> WL-520GC_PR	6			
<input type="radio"/> WL-520gU BE	6			





Uw WL-330gE is nu klaar om de internetverbinding van de hotspot te delen met de draadloze apparaten van uw vrienden.

De internetverbinding van een hotspot via de WL-330gE delen met netwerkgebruikers:

Maak een draadloze verbinding tussen deze apparaten en de SSID van de WL-330gE, zoals toegekend in stap 2. De internetverbinding van de hotspot kan nu zonder extra kosten gedeeld worden!



U kunt de verbinding tussen de WL-330gE en uw laptop verbreken als de configuratie voltooid is.



Seade WL-330gE režiimis Hotspot

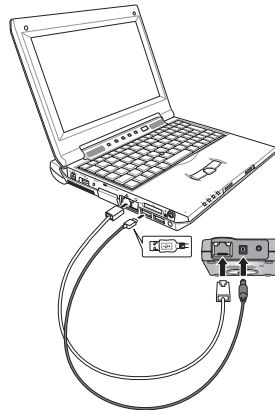
Kui seade WL-330gE on režiimis "Hotspot" (režiimi Gateway all), siis peale selle, et teie sülearvuti on ühenduses Internetiga, saavad ka teie (või teie sõprade) teised WiFi-seadmed (PDA, PSP või WiFi-telefon) ligipääsu Internetile ilma täiendavate kulutusteta.



Kuidas ühiskasutada Interneti-ühendust, kasutades seadet WL-330gE hotspot režiimis?

Enne seadme WL-330gE konfigureerimist:

1. Lülitage seade WL-330gE sisse, kasutades sellega kaasnenud USB toitejuhet.
2. Ühendage seade WL-330gE sülearvutiga, kasutades Ethernet (RJ45) kaablit.
3. Avage oma arvutis Interneti-brauser ja tippige aadressireale 192.168.1.220



Ühendage seade WL-330gE hotspotiga:

1. Vaikimisi kuvatakse seadme WL-330gE esmasel häälestuslehel vahekaart "Gateway Mode". Vastasel juhul valige sakk "Gateway Mode".
2. Režiimi "Gateway" all sisestage mis tahes nimi seadme WL-330gE SSID-i jaoks (teie võrgu nimi). Näiteks: ASUS võrk.
3. Valige sobiv turvatase. Näiteks: Madal (Avatud süsteem).





Gateway
AP
Adapter
Repeater

User

WL-330gE

ADSL/Cable Modem

Internet

About Gateway mode

In this mode, we suppose you use WL-330gE to connect to Internet through Hotspot, ADSL or Cable Modem. Meanwhile, people in your environment are able to share the same IP to ISP.

NAT is enabled, WAN connection is allowed by using PPPoE, or DHCP client, or static IP. In addition, some features which are useful for home user, such as UPnP and DDNS, are supported.

[Advanced Setting](#)

Quick Setup

SSID:

Security Level:

Hotspot Mode: ☐ Enable ☒ Disable

Finish

4. Valige käsk “Enable” Hotspot Mode (Luba režiim Hotspot). Avaneb saadaolevate hotspot SSID-de loend.

Gateway
AP
Adapter
Repeater

User

WL-330gE

Hotspot

Internet

About Gateway mode

In this mode, we suppose you use WL-330gE to connect to Internet through Hotspot, ADSL or Cable Modem. Meanwhile, people in your environment are able to share the same IP to ISP.

NAT is enabled, WAN connection is allowed by using PPPoE, or DHCP client, or static IP. In addition, some features which are useful for home user, such as UPnP and DDNS, are supported.

[Advanced Setting](#)

Quick Setup

WL-330gE's SSID:

Security Level:

Hotspot Mode: ☒ Enable ☐ Disable

Available Network List				
SSID	Channel	Authentication	Signal Level	Status
<input type="radio"/> WL-700NU1	1	WEP	<div style="width: 100%; height: 10px; background: linear-gradient(to right, green, yellow, red);"></div>	
<input checked="" type="radio"/> WL700gE_TEST	1		<div style="width: 100%; height: 10px; background: linear-gradient(to right, green, yellow, red);"></div>	
<input type="radio"/> WL-520GC_PR	6		<div style="width: 100%; height: 10px; background: linear-gradient(to right, green, yellow, red);"></div>	
<input type="radio"/> WL-520GU BE	6		<div style="width: 100%; height: 10px; background: linear-gradient(to right, green, yellow, red);"></div>	

5. Valige see hotspot SSID (hotspot'i nimi), millega soovite ühendust luua.

6. Klõpsake nuppu “Connect” (Loo ühendus).

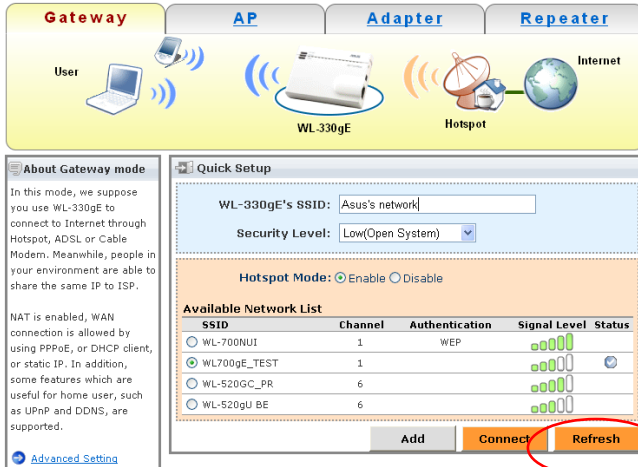
18



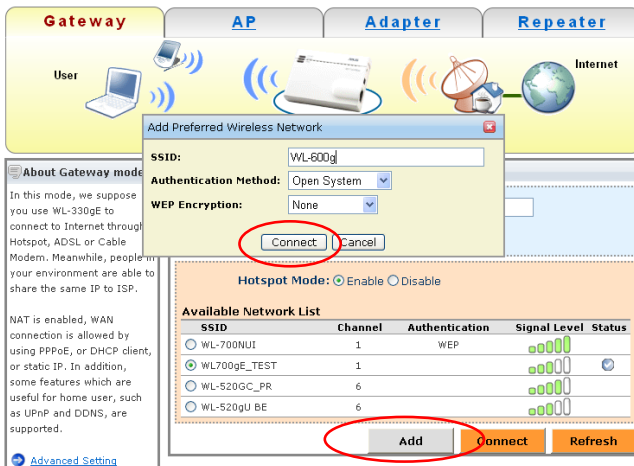


!! P.S. Kui sobiv Hotspot SSID loendis puudub

1. Klõpsake käsku "Refresh" (Värskenda), veendumaks et kuvatakse kõik lähedalolevad Hotspot SSID-id.



2. Kui neid ikkagi ei kuvata, siis klõpsake käsku "Add" (Lisa), et sisestada (valida) käsitsi SSID, millega soovite luua ühendust, ning valige autentimis- ja krüptimismeetod. Seejärel klõpsake nuppu "Connect" (Loo ühendus).





Nüüd on seade WL-330gE valmis hotspot Interneti-ühenduse ühiskasutuseks teie või teie sõprade teiste traadita seadmete vahel.

Ühiskasutage Hotspot Interneti-ühendust koos teiste võrgukasutajatega seadme WL-330gE abil:

Ühendage lihtsalt need seadmed traadita, kasutades seadme WL-330gE's SSID-i (mille te määrasite sammus 2), et ühiskasutada hotspot Interneti-ühendust ilma täiendavate kulutusteta!



Kui konfigureerimine on lõpetatud, saate te seadme WL-330gE oma sülearvutist lahutada.





WL-330gE langattomalla alueella

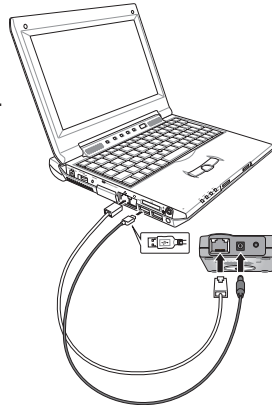
Yhdyskäytävä-tilaan kuuluvan WL-330gE:n ”langaton alue –tilan” avulla kannettavan tietokoneesi lisäksi sinun (tai ystäväsi) muilla WiFi-laitteilla (PDA, PSP ja WiFi-puhelin) pääsee internettiin ilman lisäkustannuksia.



Kuinka internetyhteyden voi jakaa käyttämällä WL-330gE:tä langattomalla alueella?

Ennenkuin konfiguroit WL-330gE:si:

1. Laita virta päälle WL-330gE:hesi mukana tulleen USB-virtajohdon avulla.
2. Yhdistä WL-330gE kannettavaan tietokoneeseesi Ethernet (RJ45) –kaapelilla.
3. Avaa tietokoneesi internetselain ja kirjoita 192.168.1.220 osoitelaatikkoon.



Yhdistä WL-330gE langattomaan alueeseen:

1. ”Yhdyskäytävä-tila” on WL-330gE pääasetussivun oletusasetus. Mikäli näin ei ole, valitse ”Yhdyskäytävä-tila” -taulu.
2. Anna ”Yhdyskäytävä-tilassa” haluamasi nimi WL-330gE:n SSID:lle (verkkosi nimi). Esimerkiksi: ASUSin verkko.
3. Valitse haluamasi turvallisuustaso. Esimerkiksi: Matala (avoin järjestelmä).





Gateway **AP** **Adapter** **Repeater**

User Internet

WL-330gE ADSL/Cable Modem

About Gateway mode

In this mode, we suppose you use WL-330gE to connect to Internet through Hotspot, ADSL or Cable Modem. Meanwhile, people in your environment are able to share the same IP to ISP.

NAT is enabled, WAN connection is allowed by using PPPoE, or DHCP client, or static IP. In addition, some features which are useful for home user, such as UPnP and DDNS, are supported.

[Advanced Setting](#)

Quick Setup

SSID:

Security Level:

Hotspot Mode: ☐ Enable ☒ Disable

Finish

4. Valitse "Enable (Mahdollista)" avoimessa tilassa. Tämän jälkeen käytettävissä oleva avoimen tilan SSID-lista tulee näytölle.

Gateway **AP** **Adapter** **Repeater**

User Internet

WL-330gE Hotspot

About Gateway mode

In this mode, we suppose you use WL-330gE to connect to Internet through Hotspot, ADSL or Cable Modem. Meanwhile, people in your environment are able to share the same IP to ISP.

NAT is enabled, WAN connection is allowed by using PPPoE, or DHCP client, or static IP. In addition, some features which are useful for home user, such as UPnP and DDNS, are supported.

[Advanced Setting](#)

Quick Setup

WL-330gE's SSID:

Security Level:

Hotspot Mode: ☒ Enable ☐ Disable

Available Network List

SSID	Channel	Authentication	Signal Level	Status
<input type="radio"/> WL-700NU1	1	WEP		
<input checked="" type="radio"/> WL700gE_TEST	1			
<input type="radio"/> WL-520GC_PR	6			
<input type="radio"/> WL-520GU BE	6			

Add **Connect** **Refresh**

5. Valitse avoimen tilan SSID (avoimen tilan nimi), johon haluat yhdistää.
6. Näpäytä "Connect (Yhdistä)"-näppäintä.

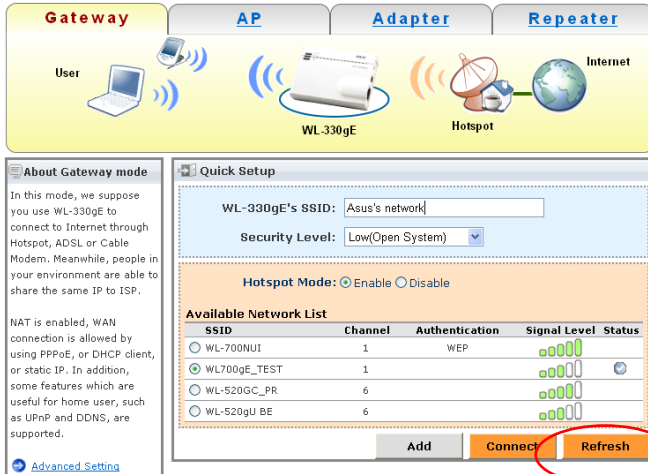
22



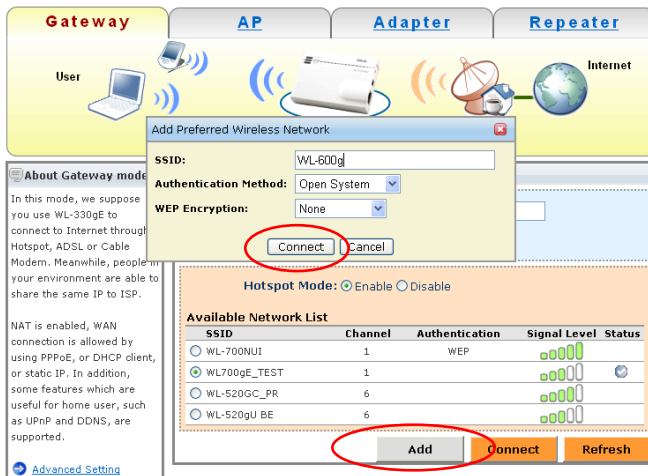


!! p.s. Mikäli haluamaasi avoimen tilan SSID:tä ei ole listalla

1. Näpätä "Refresh (Päivitä)" varmistaaksesi, että kaikki käytettävissä olevat avoimen tilan SSID:t näkyvät.



2. Mikäli haluamaasi vaihtoehtoa ei edelleenkaan ole listalla, näpätä "Add (Lisää)" ja kirjoita (valitse) SSID, johon haluat yhdistää sekä autentisointi- ja salausmenetelmät. Näpätä tämän jälkeen "Connect (Yhdistä)".





Nyt WL-330gE:si on valmis jakamaan avoimen alueen internetyhteyden sinun ja ystäviesi muiden langattomien laitteiden kanssa.

Jaa avoimen alueen internetyhteys verkkosi käyttäjien kanssa WL-330gE:n avulla:

Yhdistä nämä laitteet langattomasti kohdassa 2 määääääsi WL-330gE:n SSID:hin. Tämän jälkeen avoimen alueen internetyhteyden voi jakaa ilman lisäkuluja!



Voit katkaista WL-330gE:n yhteyden kannettavaan tietokoneeseesi konfiguroinnin päätyttyä.





Le WL-330gE connecté à une borne Wi-Fi

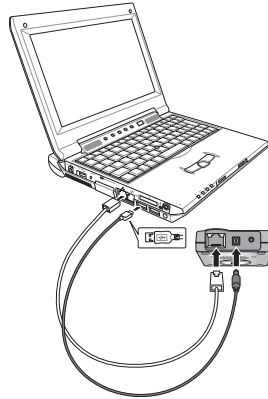
Grâce à l'option "Hotspot Mode" localisée dans la page Gateway du point d'accès sans fil WL-330gE, votre ordinateur portable ainsi que tout autre périphérique WiFi (PDA, PSP, ou téléphone WiFi) peuvent accéder à Internet sans coût supplémentaire.



Comment partager une connexion Internet en connectant le WL-330gE à une borne Wi-Fi?

Avant de configurer votre WL-330gE:

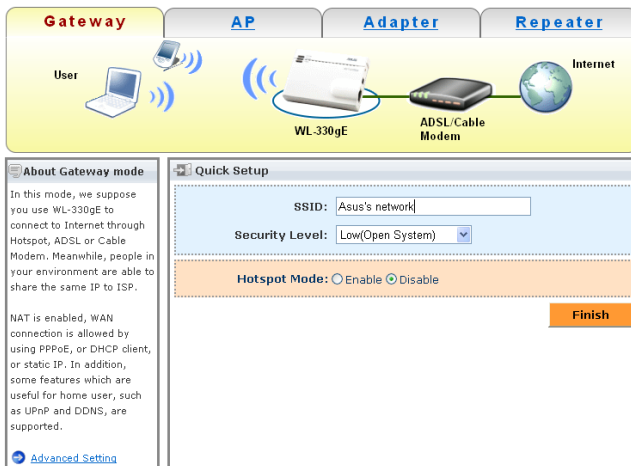
1. Mettez sous tension votre WL-330gE à l'aide du cordon d'alimentation USB fourni.
2. Connectez le WL-330gE à votre ordinateur portable via un câble Ethernet (RJ45).
3. Lancez le navigateur Web de votre ordinateur et tapez l'adresse IP 192.168.1.220 dans la barre d'adresse.



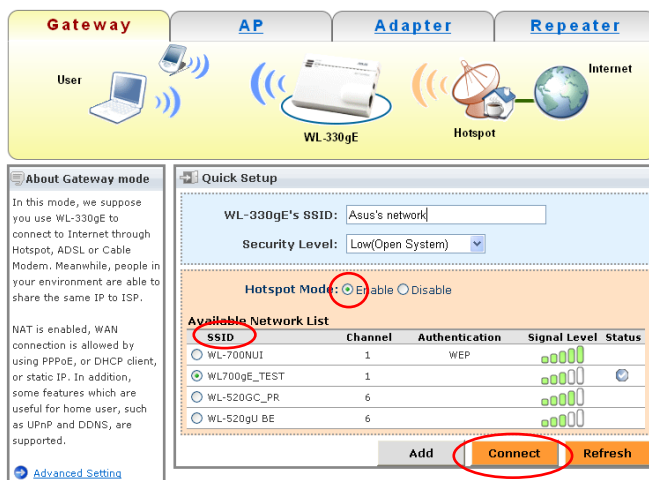
Connecter votre WL-330gE à une borne Wi-Fi:

1. Par défaut, "Gateway Mode" est affiché sur la page de configuration du WL-330gE. Si ce n'est pas le cas, choisissez l'onglet "Gateway Mode".
2. Dans "Gateway Mode", entrez le nom que vous souhaitez comme SSID du WL-330gE (nom de votre réseau). Par exemple: Réseau ASUS.
3. Sélectionnez le niveau de sécurité désiré. Par exemple: Low (Open System) [Faible (Système ouvert)].





4. Sélectionnez “Enable” dans le champ Hotspot Mode. La liste des SSID des bornes Wi-Fi disponibles apparaîtra.

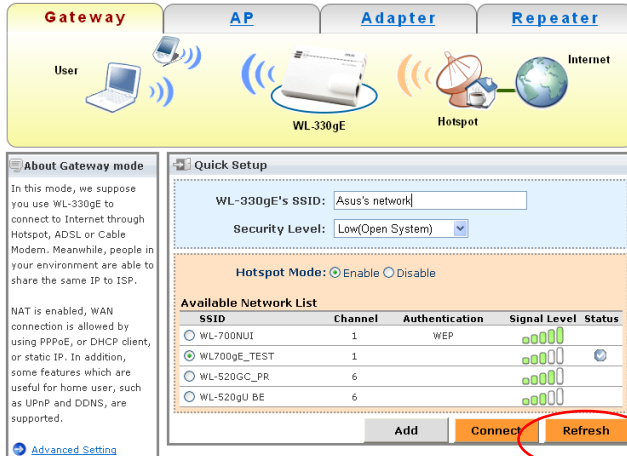


5. Choisissez le SSID de la borne Wi-Fi (nom de la borne Wi-Fi) à laquelle vous souhaitez vous connecter.
6. Cliquez sur le bouton “Connect” (Connexion).

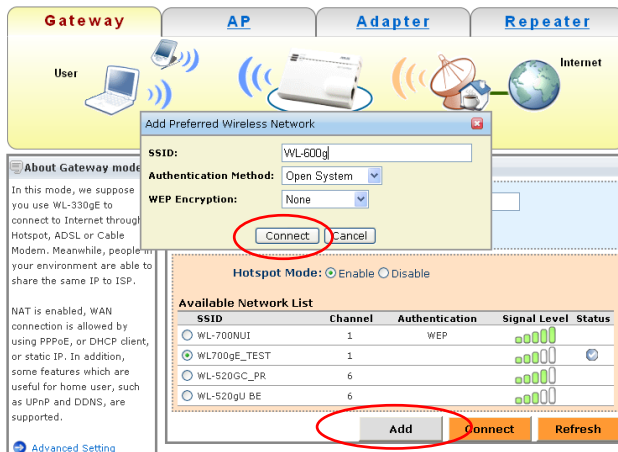


!! P.S. Si le SSID de la borne Wi-Fi désirée n'est pas listé

1. Cliquez sur "Refresh" (Rafraîchir) afin de vous assurer que tous les SSID des bornes Wi-Fi environnantes sont affichés.



2. S'il n'apparaît toujours pas, cliquez sur "Add" (Ajouter) pour saisir manuellement (choisir) le SSID de la borne Wi-Fi à laquelle vous souhaitez vous connecter ainsi que les méthodes d'Authentification et de Chiffrement. Cliquez ensuite sur "Connect" (Connexion).



Votre WL-330gE est maintenant prêt à partager une connexion Internet via une borne Wi-Fi avec vos autres périphériques sans fil ou ceux de vos amis.

Partager une connexion Internet via une borne Wi-Fi avec les utilisateurs de votre réseau avec le WL-330gE:

Connectez ces périphériques au SSID du WL-330gE défini lors de l'étape 2 et partagez la connexion Internet via cette borne Wi-Fi sans coût supplémentaire!



Vous pouvez déconnecter le câble RJ-45 reliant votre Pc portable à votre WL-330gE une fois la configuration terminée.



WL-330gE im Hotspot-Modus

Mit dem WL-330gE's "Hotspot-Modus" kann sich nicht nur Ihr Laptop mit dem Internet verbinden: andere mit dem WL-330gE verbundene WiFi-Geräte (PDA, PSP oder WiFi-Telefon) haben Zugang zum Internet, ohne dass dabei zusätzliche Kosten entstehen.

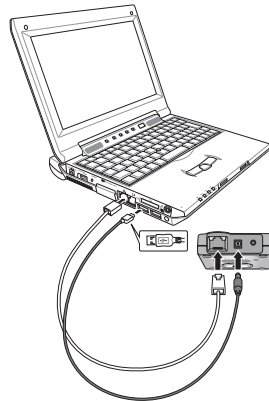


Deutsch

Wie benutzt man mit dem WL-330gE gemeinsam das Internet?

Bevor Sie Ihren WL-330gE konfigurieren:

1. Schalten Sie Ihren WL-330gE über das USB-Netzkabel ein.
2. Verbinden Sie den WL-330gE über ein Ethernet (RJ45)-Kabel mit Ihrem Laptop.
3. Starten Sie den Internet Browser auf Ihrem Computer und geben Sie in der Adressleiste 192.168.1.220 ein.



Verbinden Sie den WL-330gE mit dem Hotspot:

1. Standardmäßig wird "Gateway Mode" auf der Haupteinstellungsseite des WL-330gE angezeigt. Falls dies nicht der Fall ist, wählen Sie bitte den "Gateway Mode"-Tab.
2. Geben Sie unter "Gateway Mode" die von Ihnen gewählte SSID (Netzwerkname) für WL-330gE ein. Beispiel: ASUS Netzwerk.
3. Wählen Sie die gewünschte Sicherheitsstufe. Beispiel: Low (Open System).

29





Gateway **AP** **Adapter** **Repeater**

User WL-330gE ADSL/Cable Modem Internet

About Gateway mode

In this mode, we suppose you use WL-330gE to connect to Internet through Hotspot, ADSL or Cable Modem. Meanwhile, people in your environment are able to share the same IP to ISP.

NAT is enabled, WAN connection is allowed by using PPPoE, or DHCP client, or static IP. In addition, some features which are useful for home user, such as UPnP and DDNS, are supported.

[Advanced Setting](#)

Quick Setup

SSID:

Security Level:

Hotspot Mode: ☐ Enable ☒ Disable

Finish

4. Wählen Sie Hotspot-Modus Aktivieren ("Enable"). Die Liste verfügbarer Hotspot SSIDs wird angezeigt.

Gateway **AP** **Adapter** **Repeater**

User WL-330gE Hotspot Internet

About Gateway mode

In this mode, we suppose you use WL-330gE to connect to Internet through Hotspot, ADSL or Cable Modem. Meanwhile, people in your environment are able to share the same IP to ISP.

NAT is enabled, WAN connection is allowed by using PPPoE, or DHCP client, or static IP. In addition, some features which are useful for home user, such as UPnP and DDNS, are supported.

[Advanced Setting](#)

Quick Setup

WL-330gE's SSID:

Security Level:

Hotspot Mode: ☒ Enable ☐ Disable

Available Network List

SSID	Channel	Authentication	Signal Level	Status
<input type="radio"/> WL-700NU1	1	WEP	<div><div></div><div></div><div></div><div></div><div></div></div>	
<input checked="" type="radio"/> WL700gE_TEST	1		<div><div></div><div></div><div></div><div></div><div></div></div>	
<input type="radio"/> WL-520GC_PR	6		<div><div></div><div></div><div></div><div></div><div></div></div>	
<input type="radio"/> WL-520GU BE	6		<div><div></div><div></div><div></div><div></div><div></div></div>	

Add **Connect** **Refresh**

5. Wählen Sie die Hotspot-SSID (den Hotspot-Namen), mit der Sie sich verbinden wollen.

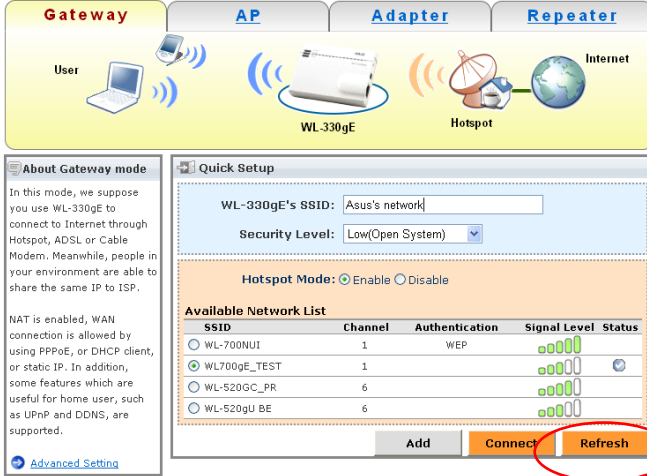
6. Klicken Sie auf Verbinden ("Connect").



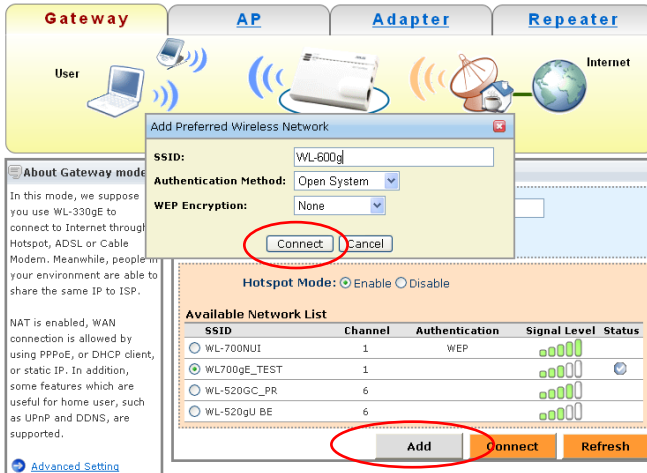


!! P.S. Falls die gewünschte Hotspot SSID nicht auf der Liste erscheint

1. Klicken Sie auf Auffrischen (“Refresh”), um sicherzugehen, dass alle Hotspot-SSIDs angezeigt werden.



2. Falls die gewünschte Hotspot-SSID immer noch nicht angezeigt wird, klicken Sie bitte auf Hinzufügen (“Add”), um die SSID und die dazugehörige Authentifizierung und Verschlüsselungsmethode selbst einzugeben. Klicken Sie dann auf Verbinden (“Connect”).





Ihr WL-330gE ist jetzt dazu bereit, mit anderen Wireless-Geräten gemeinsam die Hotspot-Internetverbindung zu nutzen.

Hotspot-Internetverbindung über WL-330gE mit anderen Netzwerkteilnehmern nutzen:

Deutsch

Verbinden Sie die Wireless-Geräte mit der in Schritt 2 eingestellten SSID, und die Hotspot-Internetverbindung kann von mehreren Clients genutzt werden, ohne dass dabei zusätzliche Internetkosten entstehen!



Sie können die Verbindung zwischen WL-330gE und Ihrem Laptop trennen, sobald die Konfiguration abgeschlossen ist.





WL-330gE σε ένα Hotspot

Με το “Hotspot Mode” [“Λειτουργία Hotspot”] του WL-330gE, στο Gateway Mode [Λειτουργία Πύλης Δικτύου], μπορείτε να συνδεθείτε στο Διαδίκτυο μέσω του φορητού υπολογιστή σας, καθώς επίσης να έχετε πρόσβαση στο Διαδίκτυο χωρίς επιπλέον χρέωση, μέσω άλλων συσκευών WiFi (PDA, PSP, ή τηλέφωνο WiFi) που διαθέτετε (ή που διαθέτουν οι φίλοι σας).



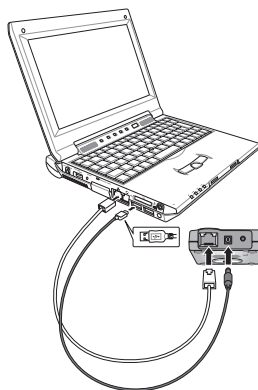
Πώς θα μοιραστείτε μια σύνδεση Διαδικτύου χρησιμοποιώντας το WL-330gE σε ένα hotspot;


Προτού ρυθμίσετε τις παραμέτρους του WL-330gE:

1. Ενεργοποιήστε το WL-330gE μέσω του παρεχόμενου καλωδίου ρεύματος USB.
2. Συνδέστε το WL-330gE στο φορητό υπολογιστή σας μέσω καλωδίου Ethernet (RJ45).
3. Ανοίξτε τον πλοηγό Διαδικτύου στον υπολογιστή σας και πληκτρολογήστε τον αριθμό 192.168.1.220 στο πλαίσιο διεύθυνσης.

Συνδέστε το WL-330gE στο hotspot:

1. Βάσει προεπιλογής, το “Gateway Mode” [“Λειτουργία Πύλης Δικτύου”] προβάλλεται στην κεντρική σελίδα ρυθμίσεων του WL-330gE. Σε αντίθετη περίπτωση, παρακαλούμε όπως επιλέξετε την καρτέλα “Gateway Mode” [“Λειτουργία Πύλης Δικτύου”].
2. Στο “Gateway Mode” [“Λειτουργία Πύλης Δικτύου”], εισάγετε το όνομα που επιθυμείτε ως WL-330gE’s SSID (το όνομα του δικτύου σας). Για παράδειγμα: Δίκτυο ASUS.
3. Επιλέξτε το Επίπεδο Ασφαλείας που επιθυμείτε. Για παράδειγμα: Χαμηλό (Ανοικτό Σύστημα)





Gateway **AP** **Adapter** **Repeater**

User WL-330gE ADSL/Cable Modem Internet

About Gateway mode

In this mode, we suppose you use WL-330gE to connect to Internet through Hotspot, ADSL or Cable Modem. Meanwhile, people in your environment are able to share the same IP to ISP.

NAT is enabled, WAN connection is allowed by using PPPoE, or DHCP client, or static IP. In addition, some features which are useful for home user, such as UPnP and DDNS, are supported.

[Advanced Setting](#)

Quick Setup


SSID:

Security Level:

Hotspot Mode: ☐ Enable ☒ Disable

Finish

4. Επιλέξτε “Enable” [“Ενεργοποίηση”] του Hotspot Mode [Λειτουργία Hotspot]. Στη συνέχεια, θα προβληθεί ο διαθέσιμος κατάλογος SSID hotspot.



Gateway **AP** **Adapter** **Repeater**

User WL-330gE Hotspot Internet

About Gateway mode

In this mode, we suppose you use WL-330gE to connect to Internet through Hotspot, ADSL or Cable Modem. Meanwhile, people in your environment are able to share the same IP to ISP.

NAT is enabled, WAN connection is allowed by using PPPoE, or DHCP client, or static IP. In addition, some features which are useful for home user, such as UPnP and DDNS, are supported.

[Advanced Setting](#)

Quick Setup

WL-330gE's SSID:

Security Level:

Hotspot Mode: ☒ Enable ☐ Disable

Available Network List

SSID	Channel	Authentication	Signal Level	Status
<input type="radio"/> WL-700NUI	1	WEP	<div><div></div><div></div><div></div><div></div><div></div></div>	
<input checked="" type="radio"/> WL700gE_TEST	1		<div><div></div><div></div><div></div><div></div><div></div></div>	
<input type="radio"/> WL-520GC_PR	6		<div><div></div><div></div><div></div><div></div><div></div></div>	
<input type="radio"/> WL-520gU BE	6		<div><div></div><div></div><div></div><div></div><div></div></div>	

Add **Connect** **Refresh**

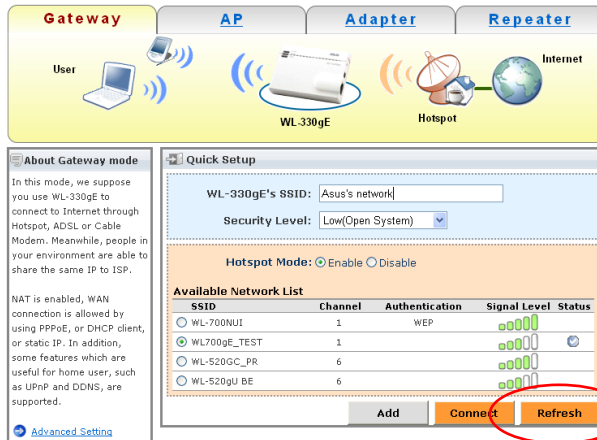
5. Επιλέξτε το hotspot SSID (το όνομα του hotspot) που επιθυμείτε να συνδέσετε.

6. Πατήστε το πλήκτρο “Connect” [“Σύνδεση”].

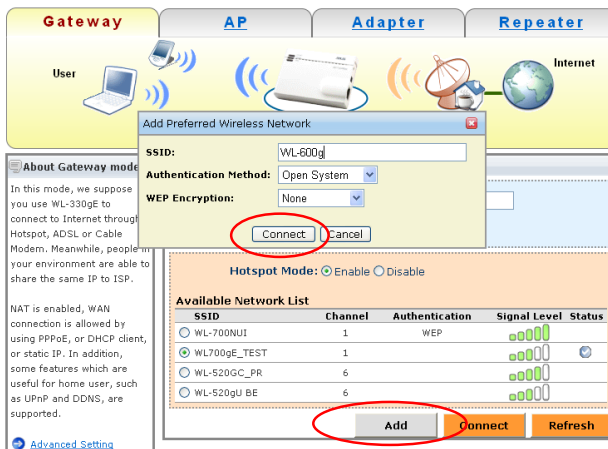


!! Υ.Σ. Σε περίπτωση που το επιθυμητό Hotspot SSID δεν περιλαμβάνεται στον κατάλογο

1. Πατήστε “Refresh” [“Ανανέωση”] για να βεβαιωθείτε ότι προβάλλονται όλα τα Hotspot SSID.



2. Εάν εξακολουθούν να μην προβάλλονται, παρακαλούμε όπως πατήσετε “Add” [“Προσθήκη”] για να πληκτρολογήσετε (επιλέξετε) το SSID που επιθυμείτε να συνδέσετε, χρησιμοποιώντας τις μεθόδους Πιστοποίησης και Κρυπτογράφησης. Στη συνέχεια πατήστε “Connect” [“Σύνδεση”].





Τώρα, το WL-330gE είναι έτοιμο να μοιραστεί σύνδεση Διαδικτύου hotspot μεταξύ των ασύρματων συσκευών που διαθέτετε εσείς ή οι φίλοι σας.

Μοιραστείτε σύνδεση Διαδικτύου Hotspot μεταξύ των χρηστών του δικτύου σας, μέσω του WL-330gE:

Απλά, συνδέστε ασύρματα τις συσκευές στο SSID του WL-330gE που επιλέξατε στο βήμα 2 και στη συνέχεια θα μπορείτε να μοιραστείτε σύνδεση Διαδικτύου hotspot χωρίς πρόσθετη χρέωση!



Μπορείτε να αποσυνδέσετε το WL-330gE από το φορητό υπολογιστή σας μόλις ολοκληρωθεί η ρύθμιση παραμέτρων.



A WL-330gE használata Hotspoton

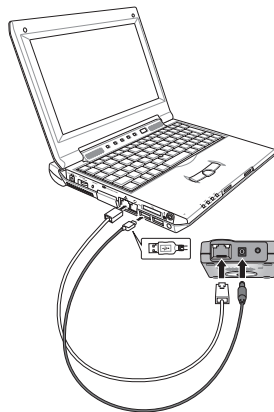
Amikor a WL-330gE készülék Átjáró üzemmódban „Hotspot” üzemmódban működik, nem csak az Ön laptop számítógépén tudja elérni az internetet, hanem az Ön (vagy a barátja) egyéb WiFi eszközei (pl. PDA, PSP vagy WiFi telefon) is járulékos költségek nélkül el tudják érni az internetet.



Hogyan osztom meg internet-kapcsolatomat, ha a WL-330gE eszközt hotspoton használom?

Mielőtt konfigurálná a WL-330gE eszközt:

1. Helyezze feszültség alá a WL-330gE eszközt a mellékelt USB-kábelén keresztül.
2. Csatlakoztassa a WL-330gE eszközt a laptop számítógépéhez egy Ethernet (RJ45) kábel segítségével.
3. Nyissa meg a böngészőprogramot a számítógépem és írja be a 192.168.1.200 címet a címsorba.



A WL-330gE eszközt csatlakoztatása hotspotához:

1. Alapértelmezésképpen a WL-330gE eszköz főképernyőjén a „Gateway Mode” (Átjáró mód) látható. Ha nem, akkor válassz ki a „Gateway Mode” (Átjáró mód) fület.
2. A „Gateway Mode” (Átjáró mód) fülön írjon be egy tetszés szerinti nevet a WL-330gE SSID-jeként (a hálózat nevéként). Például: ASUS hálózata.
3. Válassza ki a biztonsági szintet. Például: Alacsony (nyílt rendszer).

Magyar





Gateway **AP** **Adapter** **Repeater**

User WL-330gE ADSL/Cable Modem Internet

About Gateway mode

In this mode, we suppose you use WL-330gE to connect to Internet through Hotspot, ADSL or Cable Modem. Meanwhile, people in your environment are able to share the same IP to ISP.

NAT is enabled, WAN connection is allowed by using PPPoE, or DHCP client, or static IP. In addition, some features which are useful for home user, such as UPnP and DDNS, are supported.

[Advanced Setting](#)

Quick Setup

SSID:

Security Level:

Hotspot Mode: ☐ Enable ☒ Disable

Finish

4. Válassza a Hotspot mód „Enable” (Engedélyezése) opciót. Ekkor megjelenik az elérhető hotspotok SSID listája.

Gateway **AP** **Adapter** **Repeater**

User WL-330gE Hotspot Internet

About Gateway mode

In this mode, we suppose you use WL-330gE to connect to Internet through Hotspot, ADSL or Cable Modem. Meanwhile, people in your environment are able to share the same IP to ISP.

NAT is enabled, WAN connection is allowed by using PPPoE, or DHCP client, or static IP. In addition, some features which are useful for home user, such as UPnP and DDNS, are supported.

[Advanced Setting](#)

Quick Setup

WL-330gE's SSID:

Security Level:

Hotspot Mode: ☒ Enable ☐ Disable

Available Network List

SSID	Channel	Authentication	Signal Level	Status
<input type="radio"/> WL-700NU1	1	WEP	<div><div></div><div></div><div></div><div></div><div></div></div>	
<input checked="" type="radio"/> WL700gE_TEST	1		<div><div></div><div></div><div></div><div></div><div></div></div>	
<input type="radio"/> WL-520GC_PR	6		<div><div></div><div></div><div></div><div></div><div></div></div>	
<input type="radio"/> WL-520GU BE	6		<div><div></div><div></div><div></div><div></div><div></div></div>	

Add **Connect** **Refresh**

5. Válassza ki azon hotspot SSID-jét (a hotspot nevét), amelyhez csatlakozni kíván.

6. Kattintson a „Connect” (Kapcsolódás) gombra.

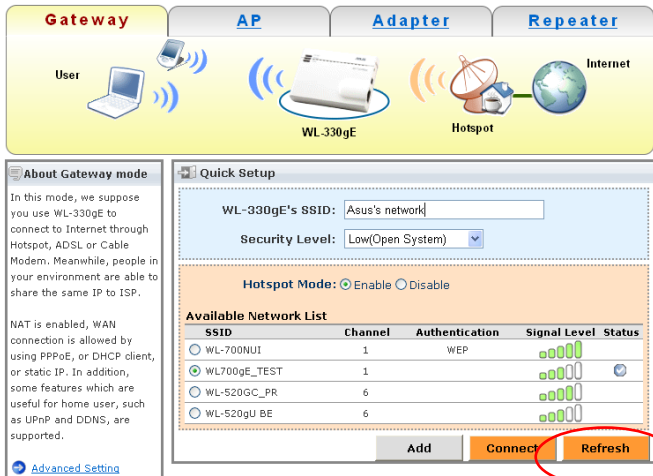
38



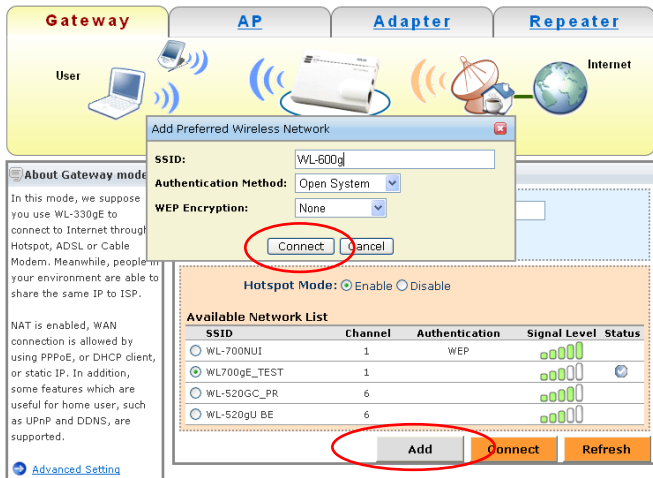


!! P.S. Ha a kívánt Hotspot SSID-je nem szerepel a listán

1. Kattintson a „Refresh” gombra, hogy meggyőződjön, látható az összes közelben lévő Hotspot SSID-je.



2. Ha ennek ellenére sem látható, kattintson az „Add” (Hozzáadás) gombra, hogy manuálisan begépelje (kiválassza) azon SSID-t, amelyhez kapcsolódni kíván, illetve a Hitelesítés és Titkosítás módját. Ezután kattintson a „Connect” (Kapcsolódás) gombra.





A WL-330gE eszköz most már készen áll a hotspot internet-kapcsolat megosztására az Ön vagy a barátai egyéb vezeték nélküli eszközei között.

Hotspot internet-kapcsolat megosztása a hálózati felhasználók között, a WL-330gE eszközön keresztül:

Egyszerűen vezeték nélküli csatlakoztassa ezen eszközöket a WL-330gE azon SSID-je felhasználásával, amelyeket a 2. lépésben megadott, így a hotspot internet-kapcsolata további költségek nélkül megosztható!



A konfigurálás végén leválaszthatja az RJ-45 típusú kábelt a laptop számítógépről és a WL-330gE eszközről.





WL-330gE di Hotspot (Tempat Akses)

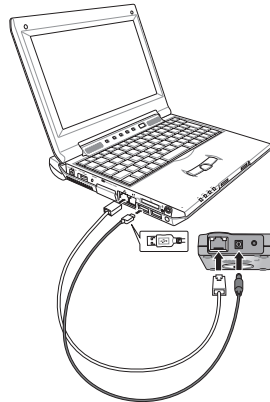
Dengan WL-330gE's "Hotspot Mode" ("Mode Tempat Akses" WL-330gE) pada Gateway Mode (Mode Gerbang), tidak hanya laptop Anda yang dapat mengakses Internet tetapi perangkat WiFi (PDA,PSP, atau telepon WiFi) Anda (atau teman Anda) dapat mengakses Internet tanpa biaya tambahan.



Cara berbagi sambungan Internet menggunakan WL-330gE di hotspot (tempat akses)?

Sebelum mengkonfigurasi WL-330gE:

1. Aktifkan daya WL-330gE menggunakan USB power cord (kabel daya USB) yang terpasang.
2. Sambungkan WL-330gE ke laptop menggunakan kabel Ethernet (RJ45).
3. Buka Internet browser (penjelajah Internet) pada komputer Anda dan ketik 192.168.1.220 di dalam address box (bidang alamat).



Sambungkan WL-330gE ke hotspot (tempat akses):

1. Standarnya, "Gateway Mode" (Mode Gerbang) ditampilkan pada main WL-330gE setup page (halaman tata utama WL-330gE). Jika tidak, silahkan memilih tablet "Gateway Mode" (Mode Gerbang).
2. Pada "Gateway Mode" (Mode Gerbang), masukkan nama apapun yang Anda inginkan sebagai WL-330gE's SSID (nama jaringan Anda). Misalnya: ASUS's network (Jaringan ASUS).
3. Pilih Security Level (Tingkat Keamanan) yang Anda inginkan. Misalnya: Rendah(Open System (Sistem Terbuka)).





Gateway AP Adapter Repeater

User

WL-330gE

ADSL/Cable Modem

Internet

About Gateway mode

In this mode, we suppose you use WL-330gE to connect to Internet through Hotspot, ADSL or Cable Modem. Meanwhile, people in your environment are able to share the same IP to ISP.

NAT is enabled, WAN connection is allowed by using PPPoE, or DHCP client, or static IP. In addition, some features which are useful for home user, such as UPnP and DDNS, are supported.

[Advanced Setting](#)

Quick Setup

SSID:

Security Level:

Hotspot Mode: ☐ Enable ☒ Disable

Finish

4. Pilih “Enable” Hotspot Mode (“Fungsikan” Mode Tempat Akses). Kemudian daftar hotspot SSID (tempat akses SSID) akan muncul.

Gateway AP Adapter Repeater

User

WL-330gE

Hotspot

Internet

About Gateway mode

In this mode, we suppose you use WL-330gE to connect to Internet through Hotspot, ADSL or Cable Modem. Meanwhile, people in your environment are able to share the same IP to ISP.

NAT is enabled, WAN connection is allowed by using PPPoE, or DHCP client, or static IP. In addition, some features which are useful for home user, such as UPnP and DDNS, are supported.

[Advanced Setting](#)

Quick Setup

WL-330gE's SSID:

Security Level:

Hotspot Mode: ☒ Enable ☐ Disable

Available Network List

SSID	Channel	Authentication	Signal Level	Status
<input type="radio"/> WL-700NU1	1	WEP	<div><div></div><div></div><div></div><div></div><div></div></div>	
<input checked="" type="radio"/> WL700gE_TEST	1		<div><div></div><div></div><div></div><div></div><div></div></div>	
<input type="radio"/> WL-520GC_PR	6		<div><div></div><div></div><div></div><div></div><div></div></div>	
<input type="radio"/> WL-520GU BE	6		<div><div></div><div></div><div></div><div></div><div></div></div>	

Add **Connect** **Refresh**

5. Pilih hotspot SSID (tempat akses SSID) (the hotspot's name (nama tempat akses)) yang ingin Anda sambungkan.
6. Klik pada tombol “Connect” (“Sambungkan”).

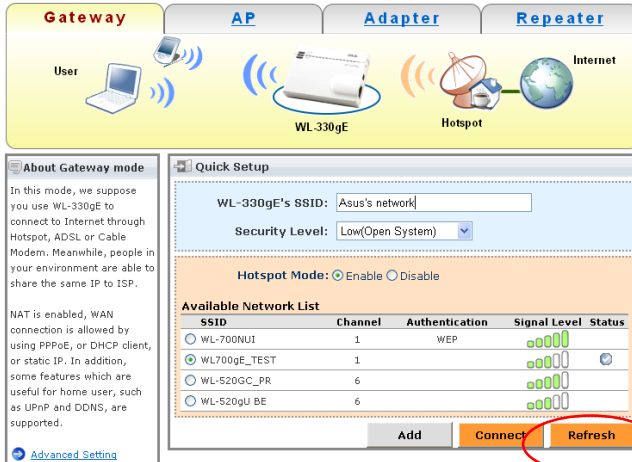
42



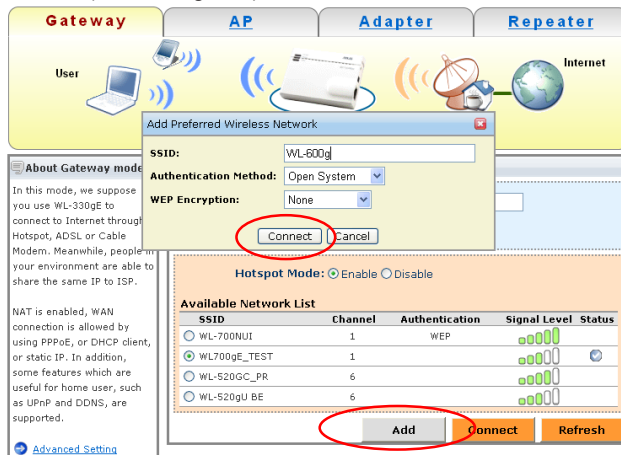


!! N.B. Jika Hotspot SSID (Tempat Akses SSID) yang diinginkan tidak ada

1. Klik pada “Refresh” (Segarkan) untuk memastikan bahwa semua Hotspot SSID (Tempat Akses SSID) di sekitarnya ditampilkan.



2. Jika masih tidak ditampilkan, silahkan klik pada “Add” (“Tambah”) untuk memasukkan secara manual (choose (pilih)) SSID yang ingin Anda sambungkan, Authentication (Pembuktian), dan metode Encryption (Enkripsi). Kemudian klik pada tombol “Connect” (“Sambungkan”).





Sekarang WL-330gE siap berbagi sambungan hotspot Internet (tempat akses Internet) antara perangkat wireless (nirkabel) Anda atau teman-teman Anda.

Berbagi sambungan Hotspot Internet (Tempat Akses Internet) antara network users (jaringan pengguna) melalui WL-330gE:

Hanya dengan menyambungkan perangkat-perangkat ini secara wireless (nirkabel) pada WL-330gE's SSID yang ditunjuk pada langkah ke 2 kemudian sambungan hotspot's Internet (Internet tempat akses) dapat dibagi tanpa biaya tambahan!



Anda dapat disconnect (memutuskan sambungan) WL-330gE dari laptop setelah konfigurasi selesai.



WL-330gE in un Hotspot

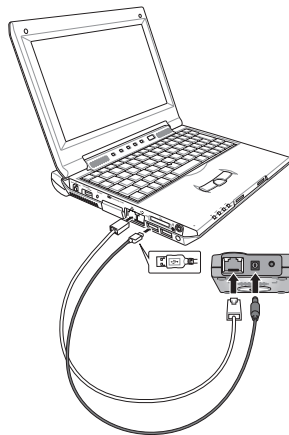
Con WL-330gE in modalità Hotspot ("Hotspot Mode"), all' interno della modalità Gateway, non soltanto il proprio portatile, ma anche altri dispositivi WiFi (propri o dei propri amici), quali telefoni WiFi, PDA o PSP, possono accedere ad Internet, senza costi aggiuntivi.



Come Condividere la Connessione Internet con WL-330gE in un hotspot?

Prima di configurare WL-330gE:

1. Accendere WL-330gE, dopo averlo collegato all' alimentatore USB.
2. Collegare WL-330gE al portatile tramite cavo Ethernet (RJ45).
3. Aprire il browser Internet nel computer e digitare 192.168.1.220 nella barra degli indirizzi.



Collegare WL-330gE all' hotspot:

1. Per impostazione predefinita, "Gateway Mode" (modalità Gateway) è visualizzato alla pagina di configurazione principale di WL-330gE. In caso di mancata visualizzazione, scegliere la scheda "Gateway Mode".
2. In "Gateway Mode" (modalità Gateway), inserire un nome come SSID di WL-330gE (nome della rete). Per esempio: Rete ASUS.
3. Selezionare il livello di protezione (Security Level) desiderato. Per esempio: Low (Open System) [Basso (Sistema Aperto)].





Gateway **AP** **Adapter** **Repeater**

User WL-330gE ADSL/Cable Modem Internet

About Gateway mode

In this mode, we suppose you use WL-330gE to connect to Internet through Hotspot, ADSL or Cable Modem. Meanwhile, people in your environment are able to share the same IP to ISP.

NAT is enabled, WAN connection is allowed by using PPPoE, or DHCP client, or static IP. In addition, some features which are useful for home user, such as UPnP and DDNS, are supported.

[Advanced Setting](#)

Quick Setup

SSID:

Security Level:

Hotspot Mode: ☐ Enable ☒ Disable

Finish

4. Selezionare la modalità hotspot “Enable” (Attiva). Apparirà quindi l’elenco degli SSID di hotspot disponibili.

Gateway **AP** **Adapter** **Repeater**

User WL-330gE Hotspot Internet

About Gateway mode

In this mode, we suppose you use WL-330gE to connect to Internet through Hotspot, ADSL or Cable Modem. Meanwhile, people in your environment are able to share the same IP to ISP.

NAT is enabled, WAN connection is allowed by using PPPoE, or DHCP client, or static IP. In addition, some features which are useful for home user, such as UPnP and DDNS, are supported.

[Advanced Setting](#)

Quick Setup

WL-330gE's SSID:

Security Level:

Hotspot Mode: ☒ Enable ☐ Disable

Available Network List

SSID	Channel	Authentication	Signal Level	Status
<input type="radio"/> WL-700NU1	1	WEP	<div><div></div><div></div><div></div><div></div><div></div></div>	
<input checked="" type="radio"/> WL700gE_TEST	1		<div><div></div><div></div><div></div><div></div><div></div></div>	
<input type="radio"/> WL-520GC_PR	6		<div><div></div><div></div><div></div><div></div><div></div></div>	
<input type="radio"/> WL-520gU BE	6		<div><div></div><div></div><div></div><div></div><div></div></div>	

Add **Connect** **Refresh**

5. Scegliere l’ SSID per l’ hotspot (il nome dell’ hotspot) a cui connettersi.
6. Cliccare sul pulsante “Connect” (Connetti).

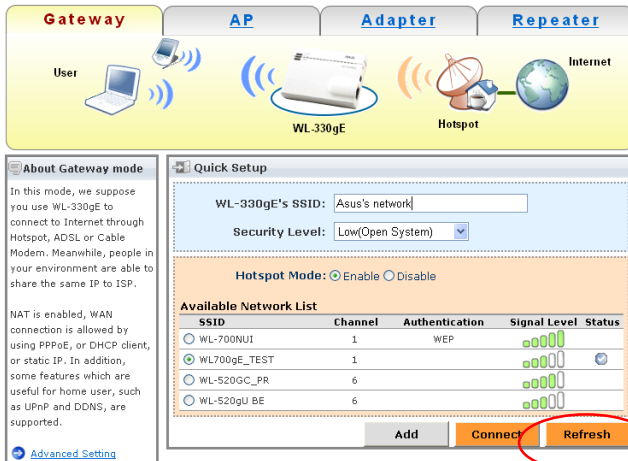
46



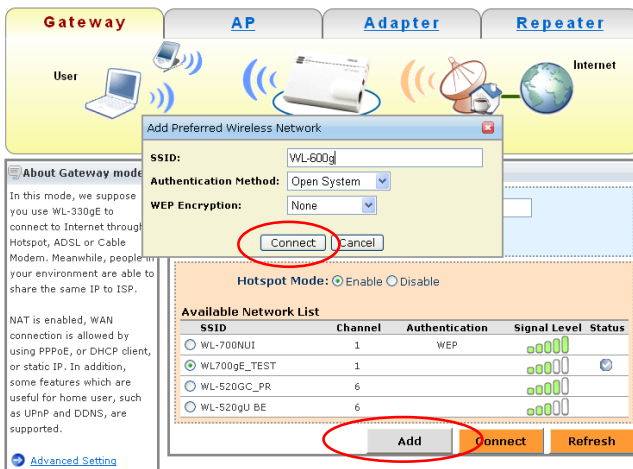


!! P.S. Se l' SSID dell' Hotspot desiderato non è nell' elenco

1. Cliccare su “Refresh” (Aggiorna) per assicurarsi che siano mostrati gli SSID di tutti gli Hotspot in zona.



2. Se ancora non compare, cliccare su “Add” (Aggiungi) per inserire (scegliere) manualmente l' SSID a cui connettersi, il metodo di autenticazione (Authentication Method) e quello crittografico (Encryption). Quindi, cliccare “Connect” (Connetti).





Ora WL-330gE è pronto per condividere la connessione Internet hot-spot con altri dispositivi, propri o dei propri amici.

Condivisione della Connessione Internet Hotspot con altri utenti della rete, tramite WL-330gE:

E' sufficiente connettere senza fili questi dispositivi all' SSID di WL-330gE , definito al punto 2, per condividere la connessione Internet hotspot senza costi aggiuntivi!



Al termine della configurazione, si può disconnettere WL-330gE dal portatile.





WL-330gE w trybie Hotspot

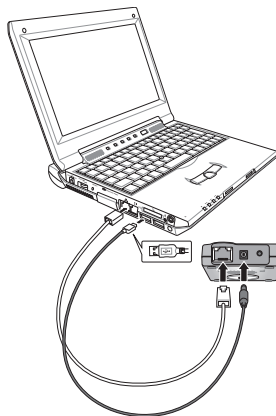
Przy ustawieniu WL-330gE w trybie “Hotspot Mode (Tryb Hotspot)” dostępnym pod trybem Gateway Mode (Tryb Brama), dostęp do Internetu bez dodatkowych kosztów może uzyskać nie tylko laptop, ale także inne urządzenia WiFi użytkownika (lub jego przyjaciół) (PDA, PSP lub telefon WiFi).



Jak współdzielić połączenie Internetowe z wykorzystaniem WL-330gE w trybie hotspot?

Przed rozpoczęciem konfigurowania WL-330gE:

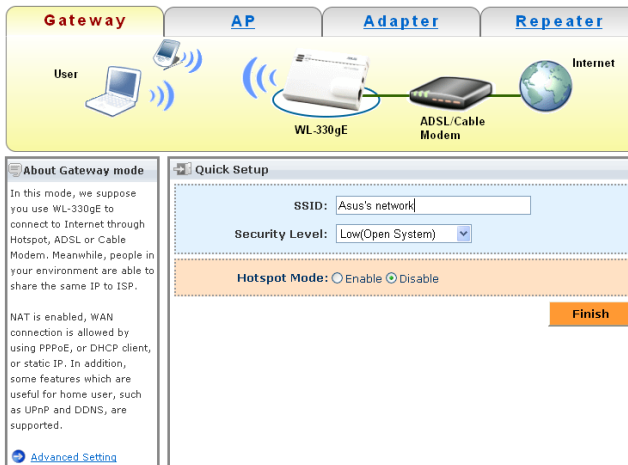
1. Włącz zasilanie WL-330gE poprzez podłączony, dodatkowy przewód zasilający USB.
2. Podłącz WL-330gE do laptopa poprzez kabel Ethernet (RJ45).
3. Otwórz w komputerze przeglądarkę Internetu i wpisz w polu adresowym 192.168.1.220.



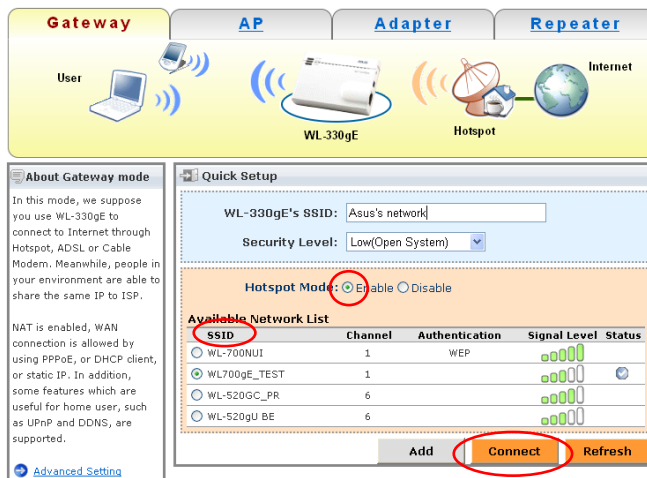
Podłączenie WL-330gE do hotspotu:

1. Domyślnie, “Gateway Mode (Tryb Brama)” jest wyświetlany na głównej stronie ustawień WL-330gE. Jeśli nie, wybierz tablet “Gateway Mode (Tryb Brama)”.
2. W trybie “Gateway Mode (Tryb Brama)”, wprowadź wymaganą nazwę jako SSID routera WL-330gE (nazwa sieciowa). Na przykład: sieć ASUS.
3. Wybierz wymagany Security Level (Poziom zabezpieczenia). Na przykład: Low (Niskie)(system otwarty).





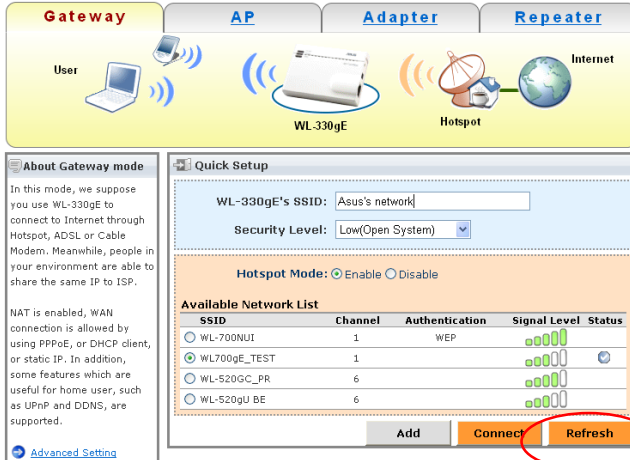
4. Wybierz “Enable (Włącz)” Hotspot Mode (Tryb Hotspot). Wyświetlona zostanie lista dostępnych SSID hotspotów.



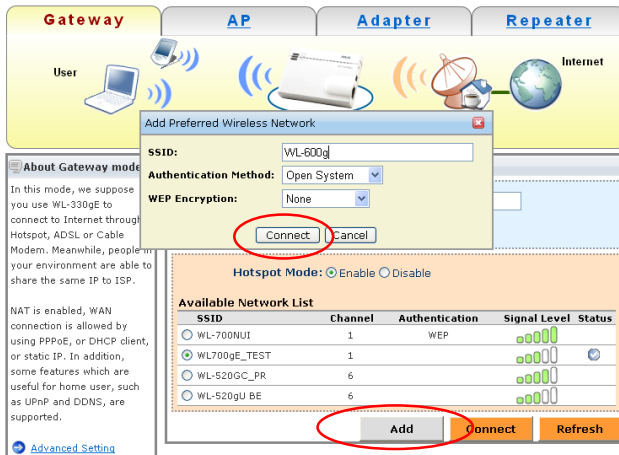
5. Wybierz SSID hotspotu (nazwa hotspotu), z którym ma zostać nawiązane połączenie.
6. Kliknij przycisk “Connect (Połącz)”.

!! P.S. Jeśli na liście nie ma wymaganego SSID hotspota

1. Kliknij “Refresh (Odśwież)”, aby upewnić się, że wyświetlane są wszystkie SSID pobliskich hotspotów.



2. Jeśli wymagane SSID hotspota nadal nie wyświetla się, kliknij “Add (Dodaj)”, aby ręcznie wprowadzić (wybrać) SSID do połączenia, Authentication (Uwierzytelnianie) i metody Encryption methods (Metody szyfrowania). Następnie kliknij “Connect (Połącz)”.



WL-330gE jest teraz gotowy do współdzielenia połączenia Internetowego wśród urządzeń bezprzewodowych użytkownika lub jego przyjaciół.

Współdzielenie połączenia Internetowego z hotspotem wśród użytkowników sieciowych poprzez WL-330gE:

Wystarczy połączyć bezprzewodowo urządzenia z SSID WL-330gE wyznaczonym w czynności 2, po czym można już będzie współdzielić połączenie bez dodatkowych kosztów!



Po zakończeniu konfigurowania można odłączyć WL-330gE od laptopa.



O modo Hotspot (Ponto activo) do WL-330gE

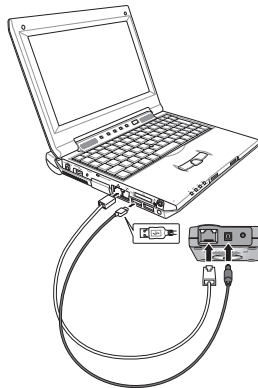
Com o modo Hotspot (Ponto activo) do WL-330gE no modo Gateway (Gateway), pode não só ligar à Internet utilizando o seu laptop como também os seus outros dispositivos (ou os dispositivos dos seus amigos) WiFi (agendas electrónicas, PSPs ou telefones WiFi) e sem incorrer em custos extra.



Como partilhar a ligação à Internet através do modo Hotspot (Ponto activo) do WL-330gE?

Antes de configurar o seu WL-330gE:

1. Ligue o WL-330gE utilizando o cabo de alimentação USB incluído.
2. Ligue o WL-330gE ao laptop utilizando um cabo Ethernet (RJ45).
3. Abra o browser da Internet no seu computador e digite 192.168.1.220 na caixa de endereço.



Ligue o WL-330gE ao ponto activo:

1. Por predefinição, o modo “Gateway” (Gateway) é mostrado na página de configuração principal do WL-330gE. Se tal não acontecer, escolha o separador “Gateway Mode” (Modo gateway).
2. No separador “Gateway Mode” (Modo gateway) introduza o nome que pretende usar como SSID do WL-330gE (nome da sua rede). Por exemplo: Rede ASUS.
3. Selecciona o nível de segurança pretendido na opção Security Level (Nível de segurança). Por exemplo: Low (Baixo) (sistema aberto).





Gateway **AP** **Adapter** **Repeater**

User

WL-330gE

ADSL/Cable Modem

Internet

About Gateway mode

In this mode, we suppose you use WL-330gE to connect to Internet through Hotspot, ADSL or Cable Modem. Meanwhile, people in your environment are able to share the same IP to ISP.

NAT is enabled, WAN connection is allowed by using PPPoE, or DHCP client, or static IP. In addition, some features which are useful for home user, such as UPnP and DDNS, are supported.

[Advanced Setting](#)

Quick Setup

SSID:

Security Level:

Hotspot Mode: ☐ Enable ☒ Disable

Finish

4. Selecione a opção “Enable” (Activar) na secção Hotspot Mode (Modo de ponto activo). A lista de SSIDs disponíveis para o ponto activo é mostrada.

Gateway **AP** **Adapter** **Repeater**

User

WL-330gE

Hotspot

Internet

About Gateway mode

In this mode, we suppose you use WL-330gE to connect to Internet through Hotspot, ADSL or Cable Modem. Meanwhile, people in your environment are able to share the same IP to ISP.

NAT is enabled, WAN connection is allowed by using PPPoE, or DHCP client, or static IP. In addition, some features which are useful for home user, such as UPnP and DDNS, are supported.

[Advanced Setting](#)

Quick Setup

WL-330gE's SSID:

Security Level:

Hotspot Mode: ☒ Enable ☐ Disable

Available Network List

SSID	Channel	Authentication	Signal Level	Status
<input type="radio"/> WL-700NU1	1	WEP	<div><div></div><div></div><div></div><div></div><div></div></div>	
<input checked="" type="radio"/> WL700gE_TEST	1		<div><div></div><div></div><div></div><div></div><div></div></div>	
<input type="radio"/> WL-520GC_PR	6		<div><div></div><div></div><div></div><div></div><div></div></div>	
<input type="radio"/> WL-520gU BE	6		<div><div></div><div></div><div></div><div></div><div></div></div>	

Add **Connect** **Refresh**

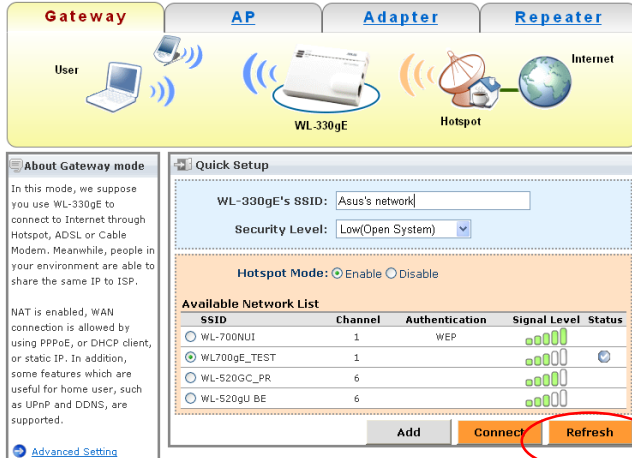
5. Escolha o SSID (nome do ponto activo) ao qual pretende ligar.
6. Clique no botão “Connect” (Ligar).



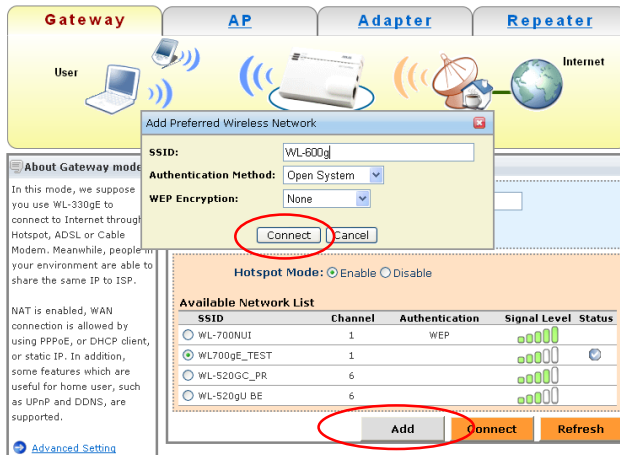


!! P.S. Se o SSID pretendido para o ponto activo não estiver listado

1. Clique em “Refresh” (Actualizar) para ter a certeza de que todos os SSIDs são mostrados.



2. Se mesmo assim não conseguir encontrar o SSID pretendido, clique em “Add” (Adicionar) para introduzir (escolher) manualmente o SSID ao qual pretende ligar. Escolha também os métodos de autenticação e de encriptação. De seguida, clique em “Connect” (Ligar).





O seu WL-330gE fica assim pronto para partilhar a ligação à Internet através do ponto activo definido podendo ligar utilizando os seus dispositivos sem fios ou os dispositivos dos seus amigos.

Partilhe a ligação à Internet através do ponto activo com todos os utilizadores da sua rede e usando o WL-330gE:

Para tal, basta ligar sem fios os dispositivos ao SSID do WL-330gE seguindo as instruções da etapa 2. Desta forma, poderá partilhar a ligação à Internet através do ponto activo e sem custos extra!



Pode desligar o WL-330gE do laptop após terminar a configuração.





WL-330gE în Hotspot

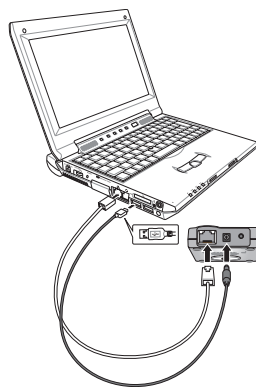
Cu “Modul Hotspot” WL-330gE în modul Gateway, se poate conecta la internet nu doar laptopul dumneavoastră dar și alte dispozitive WiFi (PDA, PSP, sau telefon WiFi) pe care le dețineți (sau ale prietenilor) pot accesa internetul fără costuri suplimentare.



Cum se poate partaja o conexiune internet utilizând WL-330gE în hotspot?

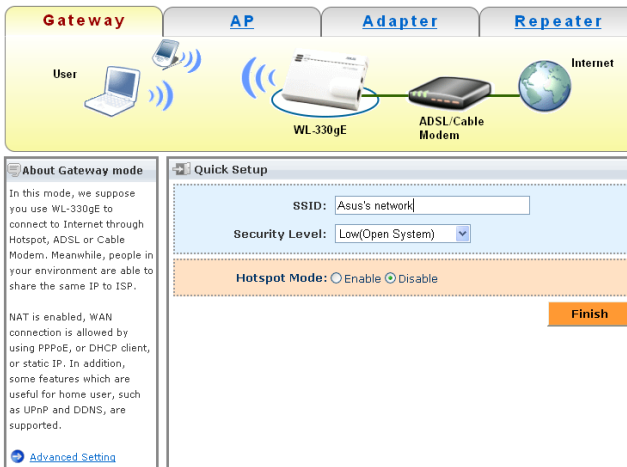
Înainte de a configura WL-330gE:

1. Alimentați WL-330gE prin intermediul cablului de alimentare USB atașat.
2. Conectați WL-330gE la laptop printr-un cablu Ethernet (RJ45).
3. Deschideți browser-ul internet în calculator și tastați 192.168.1.220 în caseta pentru adresă.

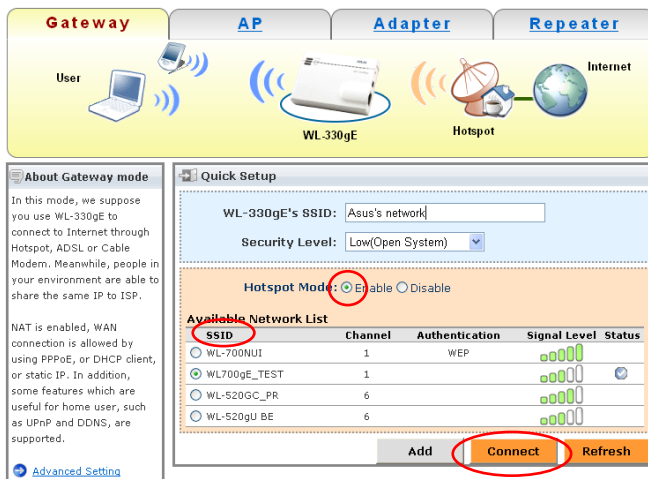


Conectarea WL-330gE la hotspot:

1. “Modul Gateway” este afișat implicit în pagina principală de inițializare WL-330gE. În caz contrar, alegeți butonul “Mod Gateway”.
2. La “Modul Gateway”, introduceți orice nume doriți pentru SSID-ul WL-330gE (numele rețelei dumneavoastră). De exemplu: rețeaua ASUS.
3. Selectați nivelul de securitate dorit. De exemplu: Low (Scăzut) (Sistem deschis).



4. Selectați “Enable (Activare)” modul Hotspot. Va apărea apoi o listă pop up cu hotspot-urile SSID disponibile.



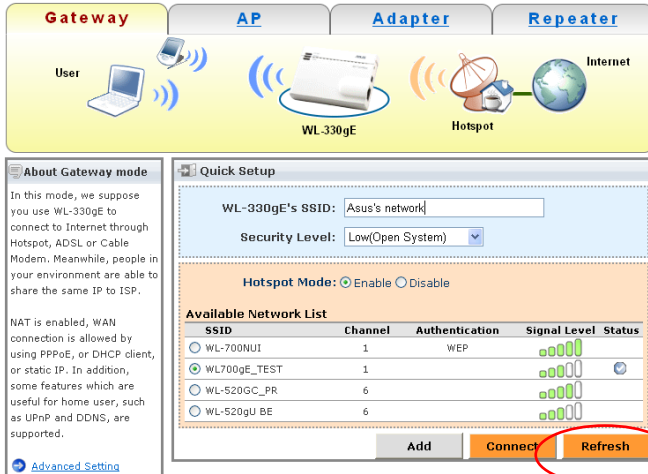
5. Alegeți hotspot-ul SSID (numele hotspot-ului) pentru care doriți conectarea.
6. Faceți clic pe butonul “Connect (Conectare)”.





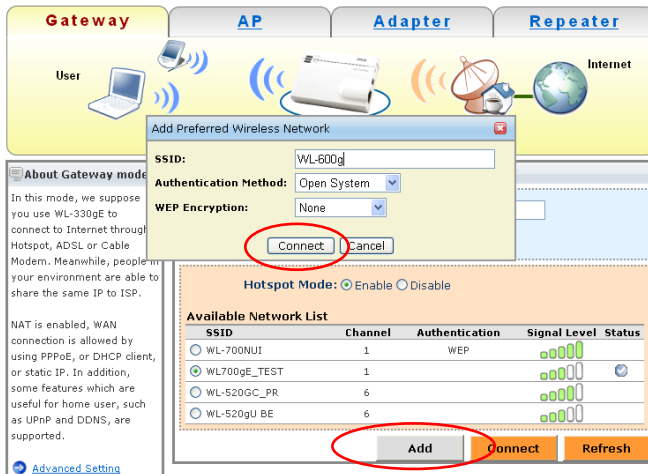
!! P.S. Dacă Hotspot-ul SSID doriți de dumneavoastră nu este listat

1. Faceți clic pe “Refresh (Reîmprospătare)” pentru a vă asigura că sunt afișate toate Hotspot-urile SSID din jur.



Română

2. Dacă tot nu este afișat, faceți clic pe “Add (Adăugare)” pentru a introduce manual (alege) SSID-ul pentru care doriți conectarea, autentificarea și metodele de criptare. Faceți apoi clic pe “Connect (Conectare)”.



59





Acum WL-330gE este pregătit pentru partajarea conexiunii internet hotspot pentru celelalte dispozitive fără fir, ale dumneavoastră sau ale prietenilor.

Partajați conexiunea internet Hotspot pentru utilizatorii rețelei dumneavoastră prin WL-330gE:

Conectați simplu, fără fir, aceste dispozitive la SSID-ul WL-330gE desemnat de dumneavoastră la pasul 2 și apoi conexiunea internet hotspot se poate partaja fără costuri suplimentare!



Puteți deconecta WL-330gE de la laptop după terminarea configurării.

Română



Hotspot в WL-330gE

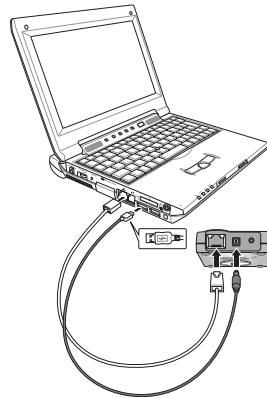
С помощью WL-330gE “Hotspot” в режиме шлюза, к Интернет будет подключен не только ваш компьютер, но и другие беспроводные устройства (PDA, PSP или беспроводные телефоны).



Как создать общее Интернет-соединение, используя WL-330gE в hotspot режиме?

Перед настройкой WL-330gE:

1. Подключите WL-330gE к вашему компьютеру с помощью USB кабеля.
2. Подключите WL-330gE к вашему компьютеру с помощью Ethernet (RJ45) кабеля.
3. Откройте браузер в вашем компьютере и в адресной строке введите 192.168.1.220.



Русский





Подключение вашей WL-330gE к hotspot:

1. По умолчанию “Режим шлюза” показан на главной странице установки WL-330gE. Если нет, пожалуйста выберите вкладку “Gateway Mode”.
2. Введите желаемое имя для WL-330gE SSID (имя вашей сети). Например: «ASUS's network».
3. Выберите уровень безопасности. Например: Low(открытая система).





Gateway **AP** **Adapter** **Repeater**

User    Internet 

WL-330gE ADSL/Cable Modem

About Gateway mode

In this mode, we suppose you use WL-330gE to connect to Internet through Hotspot, ADSL or Cable Modem. Meanwhile, people in your environment are able to share the same IP to ISP.

NAT is enabled, WAN connection is allowed by using PPPoE, or DHCP client, or static IP. In addition, some features which are useful for home user, such as UPnP and DDNS, are supported.

[Advanced Setting](#)

Quick Setup

SSID:





Security Level:

Hotspot Mode: ☐ Enable ☒ Disable

Finish

4. Выберите "Enable" Hotspot Mode. Затем SSID из списка.

Gateway **AP** **Adapter** **Repeater**

User    Internet 

WL-330gE Hotspot

About Gateway mode

In this mode, we suppose you use WL-330gE to connect to Internet through Hotspot, ADSL or Cable Modem. Meanwhile, people in your environment are able to share the same IP to ISP.

NAT is enabled, WAN connection is allowed by using PPPoE, or DHCP client, or static IP. In addition, some features which are useful for home user, such as UPnP and DDNS, are supported.

[Advanced Setting](#)




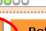

Quick Setup

WL-330gE's SSID:

Security Level:

Hotspot Mode: ☒ Enable ☐ Disable

Available Network List

SSID	Channel	Authentication	Signal Level	Status
<input type="radio"/> WL-700NU1	1	WEP		
<input checked="" type="radio"/> WL700gE_TEST	1			
<input type="radio"/> WL-520GC_PR	6			
<input type="radio"/> WL-520gU BE	6			

Add **Connect** **Refresh**

5. Выберите hotspot SSID (имя hotspot), к которой вы желаете подключиться.

6. Нажмите кнопку "Connect".

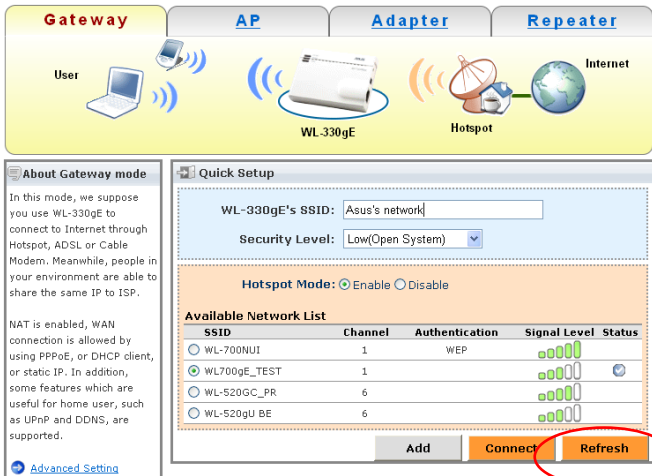
62



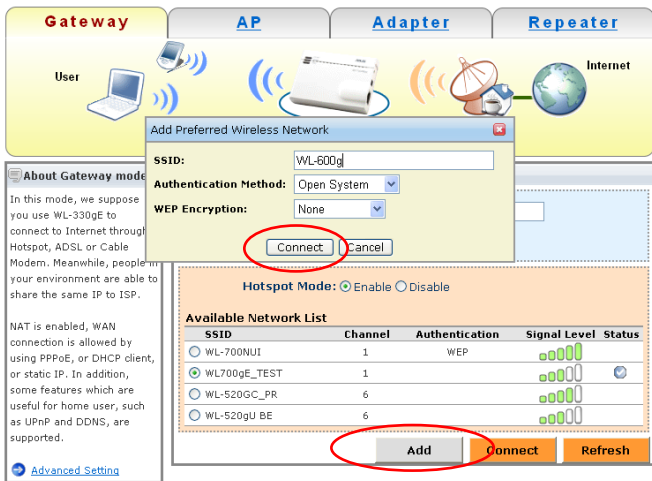


!! P.S. Если желаемая Hotspot SSID не показана

1. Нажмите “Refresh” для нахождения всех доступных Hotspot SSID.



2. Если не появилась, пожалуйста нажмите “Add” для ручного ввода SSID, аутентификации и метода шифрования. Затем нажмите “Connect”.



Русский





Теперь ваш WL-330gE готов для подключения к Интернет других беспроводных устройств.

Подключение устройств к Интернет через WL-330gE:

Только подключите эти устройства к WL-330gE SSID, которое вы назначили на шаге 2 !



После завершения конфигурации WL-330gE, вы можете отключить его от компьютера.



WL-330gE v rámci bodu Hot Spot

Pomocou režimu "Hotspot Mode" v rámci režimu brány pre WL-330gE sa k internetu dokážete pripojiť nielen pomocou svojho laptopu, ale bez ďalších dodatočných nákladov k internetu dokážete pripojiť aj svoje (alebo svojich priateľov) ďalšie zariadenia s podporou WiFi (PDA, PSP alebo WiFi telefón).



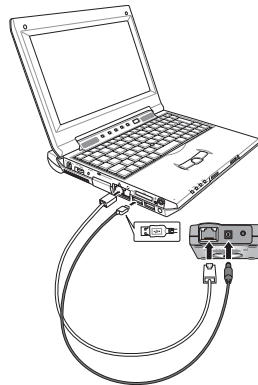
Ako pomocou WL-330gE zdieľať v rámci bodu Hot Spot pripojenie k internetu?

Pred tým ako začnete s konfiguráciou WL-330gE:

1. Pomocou sieťového USB kábla pripojte WK-330gE k zdroju napájania.
2. Pomocou Ethernet (RJ45) kábla pripojte WL-330gE k svojmu laptopu.
3. V počítači otvorte internetový prehliadač a do poľa pre zadanie adresy napíšte 192.168.1.220.

Pripojenie WL-330gE k bodu Hot Spot:

1. Na stránke pre nastavenie WL-330gE sa zobrazí predvolený režim pre bránu "Gateway Mode". Ak tomu tak nie je, zvolte blok pre režim brány "Gateway Mode".
2. V rámci režimu brány "Gateway Mode" zadajte akýkoľvek názov pre identifikátor zostavy služieb SSID pre WL-330gE (názov vašej siete). Napríklad: Sieť ASUS.
3. Zvoľte vami požadovanú Security Level (Úroveň zabezpečenia). Napríklad: Low (Open System) (Nízka (Otvorený systém)).



Slovensky





Gateway **AP** **Adapter** **Repeater**

User WL-330gE ADSL/Cable Modem Internet

About Gateway mode

In this mode, we suppose you use WL-330gE to connect to Internet through Hotspot, ADSL or Cable Modem. Meanwhile, people in your environment are able to share the same IP to ISP.

NAT is enabled, WAN connection is allowed by using PPPoE, or DHCP client, or static IP. In addition, some features which are useful for home user, such as UPnP and DDNS, are supported.

[Advanced Setting](#)

Quick Setup

SSID:

Security Level:

Hotspot Mode: ☐ Enable ☒ Disable

Finish

4. Zvoľte “Enable (Aktivovať)” režim pre Hot Spot. Následne sa rozbalí zoznam SSID pre dostupné body Hot Spot.

Gateway **AP** **Adapter** **Repeater**

User WL-330gE Hotspot Internet

About Gateway mode

In this mode, we suppose you use WL-330gE to connect to Internet through Hotspot, ADSL or Cable Modem. Meanwhile, people in your environment are able to share the same IP to ISP.

NAT is enabled, WAN connection is allowed by using PPPoE, or DHCP client, or static IP. In addition, some features which are useful for home user, such as UPnP and DDNS, are supported.

[Advanced Setting](#)

Quick Setup

WL-330gE's SSID:

Security Level:

Hotspot Mode: ☒ Enable ☐ Disable

Available Network List

SSID	Channel	Authentication	Signal Level	Status
<input type="radio"/> WL-700NU1	1	WEP	Signal Level	
<input checked="" type="radio"/> WL700gE_TEST	1		Signal Level	
<input type="radio"/> WL-520GC_PR	6		Signal Level	
<input type="radio"/> WL-520GU BE	6		Signal Level	

Add **Connect** **Refresh**

5. Zvoľte si SSID bodu Hot Spot (názov bodu Hot Spot), ku ktorému sa chcete pripojiť.
6. Kliknite na tlačidlo “Connect (Pripojiť)”.

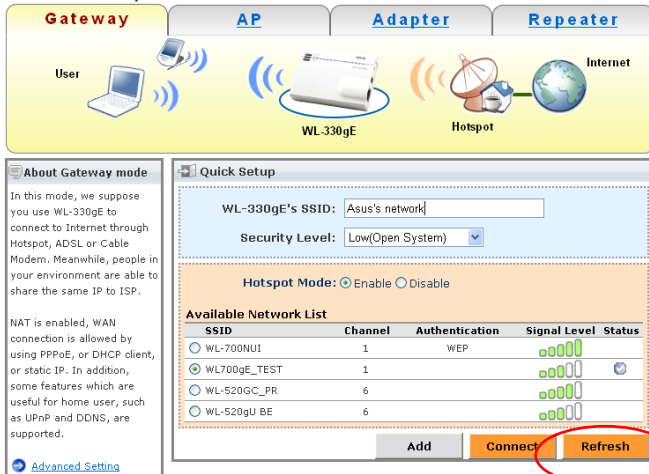
66



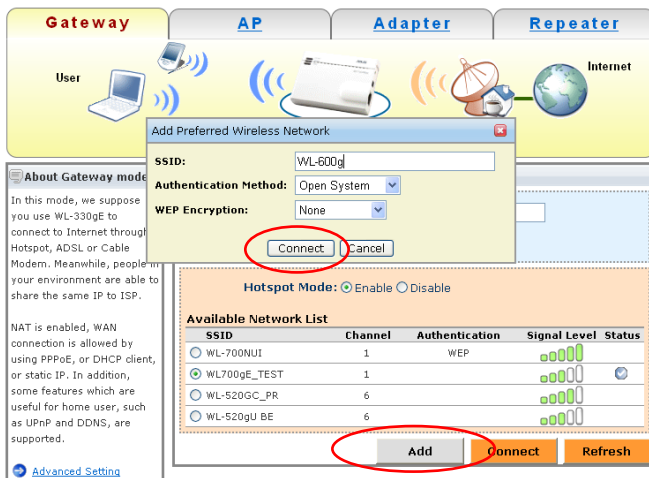


!! P.S. Ak SSID vami požadovaného bodu Hot Spot nie je uvedený

1. Kliknite na “Refresh (Obnoviť)” a presvedčte sa, že SSID všetkých bodov Hot Spot sú zobrazené.



2. Ak stále vami požadovaný bod Hot Spot nie je zobrazený, kliknite na “Add (Pridať)” s cieľom zadať (Zvoliť) SSID, ku ktorému sa chcete pripojiť, spôsob autentifikácie a šifrovania. Následne kliknite na tlačidlo “Connect (Pripojiť)”.





Teraz je vaše zariadenie WL-330gE pripravené na zdieľanie internetového spojenia medzi vašimi (alebo vašich priateľov) ďalšími bezdrôtovými zariadeniami.

Zdieľanie internetového spojenia v rámci bodu Hot Spot medzi užívateľmi siete a prostredníctvom WL-330gE:

Stačí, ak tieto zariadenia bezdrôtovo pripojíte k SSID pre WL-330gE, ktorý ste stanovili v bode 2. Následne je možné bez dodatočných nákladov zdieľať internetové spojenie v rámci bodu Hot Spot!



Po dokončení konfigurácie môžete WL-330gE odpojiť od svojho laptopu.





WL-330gE en un Hotspot

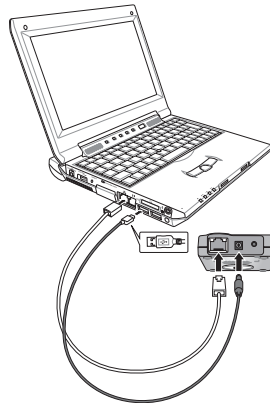
Con el modo "Hotspot" de WL-330gE en modo pasarela, no sólo su portátil podrá acceder a Internet, sino también el de sus amigos o sus otros dispositivos WiFi (PDA, PSP o teléfono WiFi) sin coste adicional.



¿Cómo compartir una conexión a Internet utilizando WL-330gE en un hotspot?

Antes de configurar su WL-330gE:

1. Encienda su WL-330gE utilizando el cable de alimentación USB suministrado.
2. Conecte el WL-330gE a su portátil por medio del cable Ethernet (RJ45).
3. Abra su navegador de Internet y escriba 192.168.1.220 en el cuadro de dirección.



Conectar su WL-330gE al hotspot:

1. De forma predeterminada se mostrará el modo "Gateway Mode" (Modo pasarela) en la página de configuración principal del WL-330gE. De no ser así, seleccione el modo "Gateway Mode" (Modo pasarela) en la tabla.
2. En el modo "Gateway Mode" (Modo pasarela), introduzca el nombre que desee utilizar como SSID del WL-330gE (el nombre de su red). Por ejemplo: Red ASUS.
3. Seleccione el nivel de seguridad que desee. Por ejemplo: baja (sistema abierto).





Gateway
AP
Adapter
Repeater

User

WL-330gE

ADSL/Cable Modem

Internet

About Gateway mode

In this mode, we suppose you use WL-330gE to connect to Internet through Hotspot, ADSL or Cable Modem. Meanwhile, people in your environment are able to share the same IP to ISP.

NAT is enabled, WAN connection is allowed by using PPPoE, or DHCP client, or static IP. In addition, some features which are useful for home user, such as UPnP and DDNS, are supported.

[Advanced Setting](#)

Quick Setup

SSID:

Security Level:

Hotspot Mode: ☐ Enable ☒ Disable

Finish

4. Seleccione "Enable" (Activar) el modo Hotspot. Se abrirá la lista de SSID disponibles.

Gateway
AP
Adapter
Repeater

User

WL-330gE

Hotspot

Internet

About Gateway mode

In this mode, we suppose you use WL-330gE to connect to Internet through Hotspot, ADSL or Cable Modem. Meanwhile, people in your environment are able to share the same IP to ISP.

NAT is enabled, WAN connection is allowed by using PPPoE, or DHCP client, or static IP. In addition, some features which are useful for home user, such as UPnP and DDNS, are supported.

[Advanced Setting](#)

Quick Setup

WL-330gE's SSID:

Security Level:

Hotspot Mode: ☒ Enable ☐ Disable

Available Network List				
SSID	Channel	Authentication	Signal Level	Status
<input type="radio"/> WL-700NU1	1	WEP	<div style="width: 100%; height: 10px; background: linear-gradient(to right, green, yellow, red);"></div>	
<input checked="" type="radio"/> WL700gE_TEST	1		<div style="width: 100%; height: 10px; background: linear-gradient(to right, green, yellow, red);"></div>	
<input type="radio"/> WL-520GC_PR	6		<div style="width: 100%; height: 10px; background: linear-gradient(to right, green, yellow, red);"></div>	
<input type="radio"/> WL-520GU BE	6		<div style="width: 100%; height: 10px; background: linear-gradient(to right, green, yellow, red);"></div>	

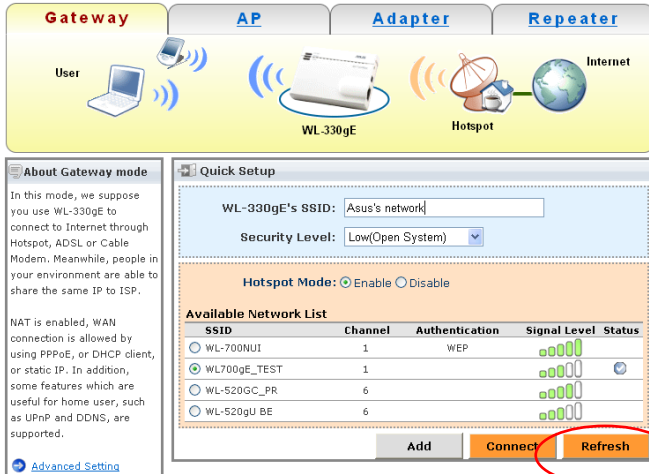
5. Seleccione el SSID de hotspot al que desee conectarse.
6. Haga clic en el botón "Connect" (Conectar).



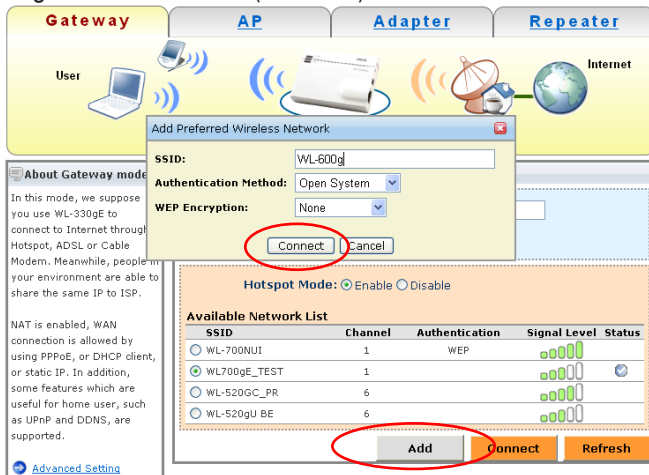


Nota: Si no se muestra el SSID del Hotspot

1. Haga clic en el botón “Refresh” (Actualizar) para asegurarse de que se muestran todos los SSID de los Hotspot disponibles alrededor.



2. Si aún no se muestra ninguno, haga clic en “Add” (Añadir) para introducir manualmente (seleccionar) el SSID al que desee conectarse, así como los métodos de autenticación y cifrado. Haga clic en “Connect” (Conectar).





Ahora su WL-330gE estará preparado para compartir la conexión a Internet a través de hotspot con los dispositivos inalámbricos de sus amigos.

Compartir una conexión a Internet a través de HotSpot entre los usuarios de su red por medio del router WL-330gE:

¡Sólo necesitará conectar de forma inalámbrica estos dispositivos al SSID del WL-330gE designado en el paso 2 y conectarse después a Internet a través de hotspot sin coste adicional!



Puede desconectar el WL-300gE de su portátil después de finalizar la configuración.





WL-330gE ในอีตส์บ็อต

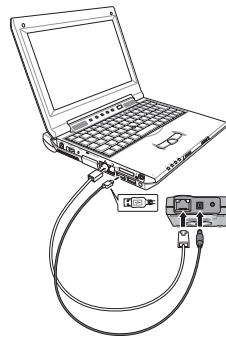
ด้วย “โหมดอีตส์บ็อต” ของ WL-330gE ภายใต้โหมดเกตเวย์ ไม่เพียงกันตบคของคุณสามารถเชื่อมต่ออินเทอร์เน็ตได้แล้ว แต่อุปกรณ์ WiFi อื่นๆ (PDA, PSP หรือ โทรศัพท์ WiFi) ของคุณ (หรือของเพื่อนคุณ) สามารถเข้าถึงอินเทอร์เน็ตได้โดยไม่ต้องเสียค่าใช้จ่ายเพิ่มเติมอีกด้วย



วิธีแชร์การเชื่อมต่ออินเทอร์เน็ตโดยใช้ WL-330gE ในอีตส์บ็อต?

ก่อนที่คุณจะตั้งค่าคอนฟิก WL-330gE:

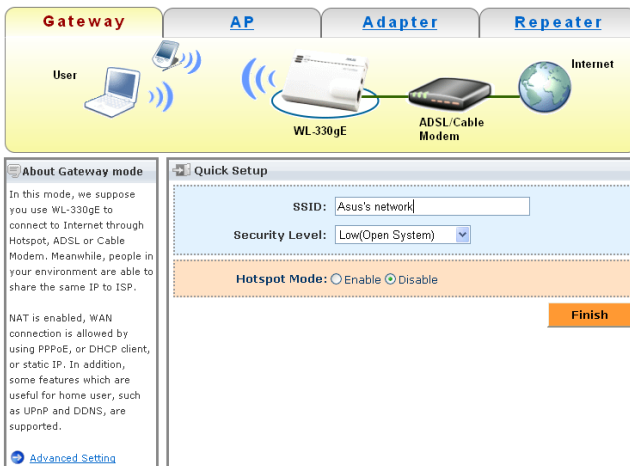
1. เปิดเครื่อง WL-330gE ของคุณผ่านสายเพาเวอร์ USB ที่ต่ออยู่
2. เชื่อมต่อ WL-330gE เข้ากับินตบุดผ่านสายอีเธอร์เน็ต (RJ45)
3. เปิดอินเทอร์เน็ตเบราว์เซอร์ในคอมพิวเตอร์ของคุณ และพิมพ์ 192.168.1.220 ในแอดเดรสบ็อกซ์



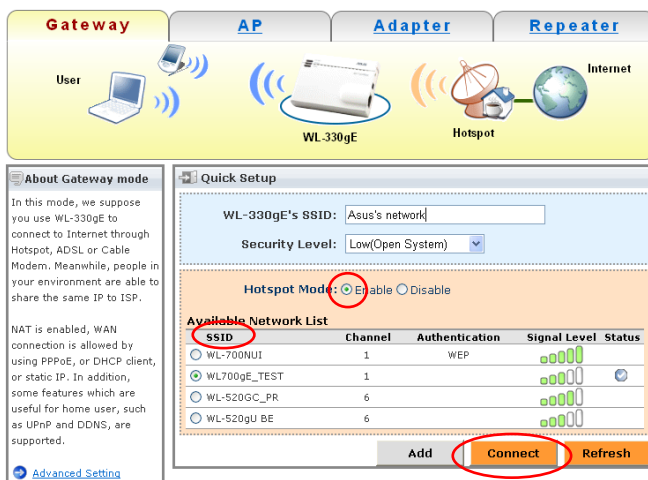
เชื่อมต่อ WL-330gE เข้ากับอีตส์บ็อต:

1. ตามค่าเริ่มต้น, “Gateway Mode (โหมดเกตเวย์)” จะแสดงขึ้นบนหน้าตั้งค่า WL-330gE หลัก ถ้าไม่ โปรดเลือกแท็บ “Gateway Mode (โหมดเกตเวย์)”
2. ภายใต้ “Gateway Mode (โหมดเกตเวย์)”, ป้อนชื่อที่คุณต้องการตั้งเป็น SSID ของ WL-330gE (ชื่อเครือข่ายของคุณ) ตัวอย่างเช่น: ASUS's network (เครือข่าย ASUS)
3. เลือกระดับการป้องกันที่คุณต้องการใช้ ตัวอย่างเช่น: Low (Open System) (ต่ำ (ระบบเปิด))





4. เลือก “Enable (เปิดทำงาน)” โหมดฮอตสปอต จากนั้นรายการฮอตสปอต SSID ที่ใช้ได้จะแสดงขึ้นมา

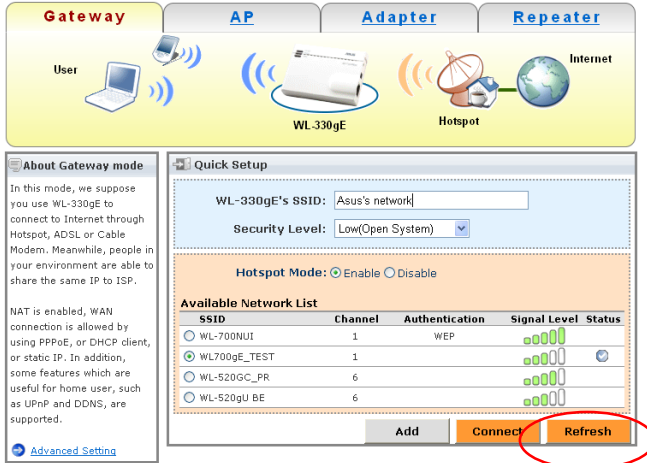


5. เลือกฮอตสปอต SSID (ชื่อของฮอตสปอต) ที่คุณต้องการเชื่อมต่อ
6. คลิกปุ่ม “Connect (เชื่อมต่อ)”

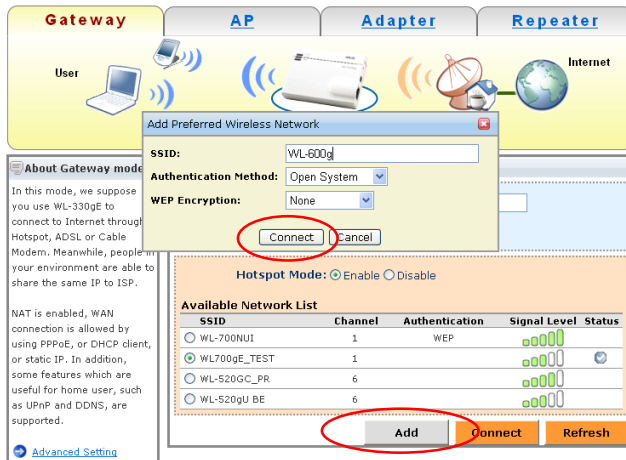


ถ้าฮอตสปอต SSID ที่คุณต้องการไม่แสดงขึ้นมา

- คลิกที่ “Refresh (รีเฟรช)” เพื่อให้แน่ใจว่าฮอตสปอต SSID ทั้งหมดที่อยู่ในบริเวณใกล้เคียงจะแสดงขึ้นมา



- ถ้าฮอตสปอตยังคงไม่แสดง โปรดคลิกที่ “Add (เพิ่ม)” เพื่อพิมพ์ (เลือก) SSID ที่คุณต้องการเชื่อมต่อ วิธีการรับรอง และการเข้ารหัสเข้าไปด้วยตัวเอง จากนั้นคลิก “Connect (เชื่อมต่อ)”.



ขณะนี้ WL-330gE ของคุณก็พร้อมที่จะแชร์การเชื่อมต่ออินเทอร์เน็ต-
นเตอร์เน็ตกับอุปกรณ์ไร้สายอื่นของคุณ หรือของเพื่อนๆ ใดแล้ว

แชร์การเชื่อมต่ออินเทอร์เน็ตของคุณให้ผู้ใช้ในเครือข่ายของคุณผ่าน
WL-330gE:

เพียงเชื่อมต่ออุปกรณ์เหล่านี้แบบไร้สายเข้ากับ SSID ของ WL-330gE
ที่คุณกำหนดไว้ในขั้นที่ 2 จากนั้นคุณ
ก็สามารถแชร์การเชื่อมต่ออินเทอร์เน็ตของอินเทอร์เน็ตได้โดยไม่ต้องเสียค่าใช้จ่ายใดๆ!



คุณสามารถจัดการเชื่อมต่อ WL-330gE จากินันตบุคหลังจากที่ตั้งค่าต่างๆ เสร็จแล้ว



Bir Hotspot alanında WL-330gE

WL-330gE'nin Ağ Geçidi Modu altındaki "Hotspot Modu" ile yalnızca dizüstü bilgisayarınız internete bağlanmaz, aynı zamanda sizin (ya da arkadaşlarınızın) diğer WiFi cihazları da (PDA, PSP, ya da WiFi telefonu) ek hiçbir bedel olmadan internete erişebilir.

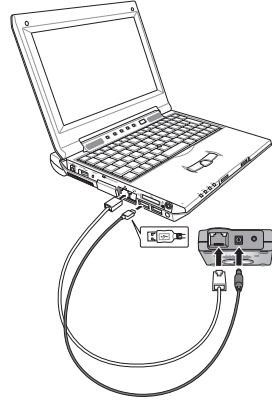


Türkçe

Bir hotspot alanında WL-330gE kullanılarak internet bağlantısı nasıl paylaşılır ?

WL-330gE'nizi yapılandırmadan önce:

1. Bağlı olan USB güç kablosu vasıtası ile WL-330gE 'nizi açın.
2. WL-330gE'yi bir Ethernet (RJ45) kablosu aracılığıyla dizüstü bilgisayarınıza bağlayın.
3. Bilgisayarınızdaki internet tarayıcınızı açın ve adres kutusuna 192.168.1.220 yazın.



WL-330gE'nizi hotspot alanına bağlayın:

1. Varsayılan "Gateway Mode (Ağ Geçidi Modu)", ana WL-330gE kurulum sayfasında görüntülenir. Görüntülenmezse, lütfen "Ağ Geçidi Modu" tablasını seçin.
2. "Ağ Geçidi Modu"nın altına WL-330gE'nin SSID'si (Ağınızın adı) olarak istediğiniz herhangi bir ismi girin. Örneğin: ASUS'un ağı
3. İsteddiğiniz Güvenlik Seviyesini seçin. Örneğin: Low(Open System) [Düşük (Açık Sistem)].

77





Gateway **AP** **Adapter** **Repeater**

User

WL-330gE

ADSL/Cable Modem

Internet

About Gateway mode

In this mode, we suppose you use WL-330gE to connect to Internet through Hotspot, ADSL or Cable Modem. Meanwhile, people in your environment are able to share the same IP to ISP.

NAT is enabled, WAN connection is allowed by using PPPoE, or DHCP client, or static IP. In addition, some features which are useful for home user, such as UPnP and DDNS, are supported.

[Advanced Setting](#)

Quick Setup

SSID: Asus's network

Security Level: Low(Open System)

Hotspot Mode: ☐ Enable ☒ Disable

Finish

4. Hotspot Modunu “Enable (Etkinleştir)”i seçin. Bu yapılr yapılmaz, mevcut hotspot SSID’lerinin listesi ekrana gelecektir.

Gateway **AP** **Adapter** **Repeater**

User

WL-330gE

Hotspot

Internet

About Gateway mode

In this mode, we suppose you use WL-330gE to connect to Internet through Hotspot, ADSL or Cable Modem. Meanwhile, people in your environment are able to share the same IP to ISP.

NAT is enabled, WAN connection is allowed by using PPPoE, or DHCP client, or static IP. In addition, some features which are useful for home user, such as UPnP and DDNS, are supported.

[Advanced Setting](#)

Quick Setup

WL-330gE's SSID: Asus's network

Security Level: Low(Open System)

Hotspot Mode: ☒ Enable ☐ Disable

Available Network List

SSID	Channel	Authentication	Signal Level	Status
<input type="radio"/> WL-700NU1	1	WEP	Signal Level Bar	
<input checked="" type="radio"/> WL700gE_TEST	1		Signal Level Bar	
<input type="radio"/> WL-520GC_PR	6		Signal Level Bar	
<input type="radio"/> WL-520GU BE	6		Signal Level Bar	

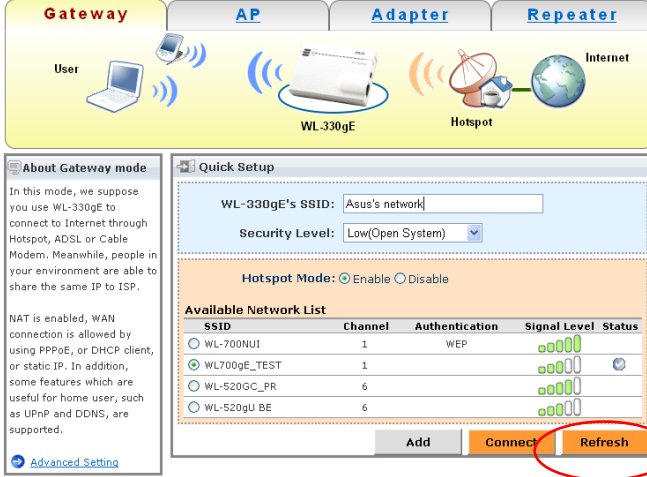
Add **Connect** Refresh

5. Bağlanmak istediğiniz, hotspot SSID’sini (hotspot’un adı) seçin.
6. “Connect (Bağlan)” düğmesine tıklayın.

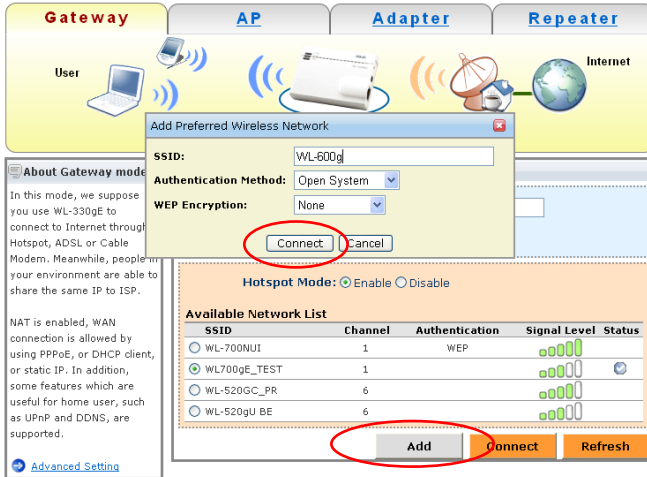


!! Dipnot İstedığınız Hotspot SSID'si listelenmemişse

1. Çevredeki bütün Hotspot SSID'lerinin gösterilmesini sağlamak için "Refresh (Yenile)"yi tıklayın.



2. Hala gösterilmeyorsa, lütfen bağlanmak istediğiniz SSID'yi, Kimlik Denetimi ve Şifreleme yöntemini klavyeden girmek için "Add (Ekle)"yi tıklayın. Daha sonra "Connect (Bağlan)"'a tıklayın.





Şimdi WL-330gE'niz sizin ya da arkadaşlarınızın diğer kablosuz cihazları arasında hotspot internet bağlantısını paylaştırmaya hazırdır.

Hotspot Internet bağlantısını WL-330gE vasıtasıyla ağ kullanıcılarınız arasında paylaşın:

Sadece bu cihazları kablosuz olarak adım 2'de atadığınız WL-330gE'nin SSID'sine bağlayın, bu yapılr yapılmaz hotspot'un internet bağlantısı ek bedel olmadan paylaşılabilir!



Yapılandırma tamamlandıktan sonra, WL-330gE'nin bağlantısını dizüstü bilgisayarınızdan çıkarabilirsiniz.



WL-330gE у «гарячій точці»

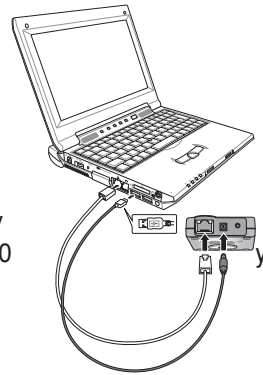
За допомогою режиму «гарячої» точки WL-330gE в «Режимі шлюзу» (Gateway Mode), не тільки ноутбук матиме доступ до Інтернету, але й інші Ваші (або Ваших друзів) пристрої бездротового доступу WiFi (PDA, PSP або WiFi, телефон) зможуть підключитися до Інтернету без додаткових витрат.



Як використовувати з'єднання з Інтернетом, застосовуючи WL-330gE у «гарячій» точці?

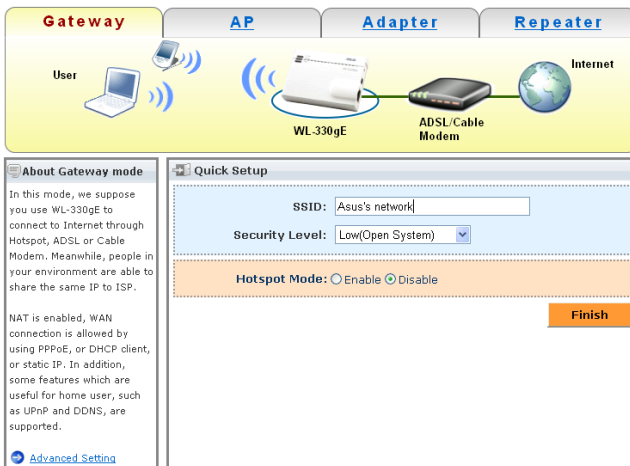
Перед налаштуванням свого WL-330gE:

1. Приєднайте WL-330gE за допомогою підключеного до USB шнура живлення.
2. Підключіть WL-330gE до ноутбука через кабель Ethernet (RJ45).
3. Відкрийте Інтернет браузер на своєму комп'ютері та введіть 192.168.1.220 в кінці адреси.

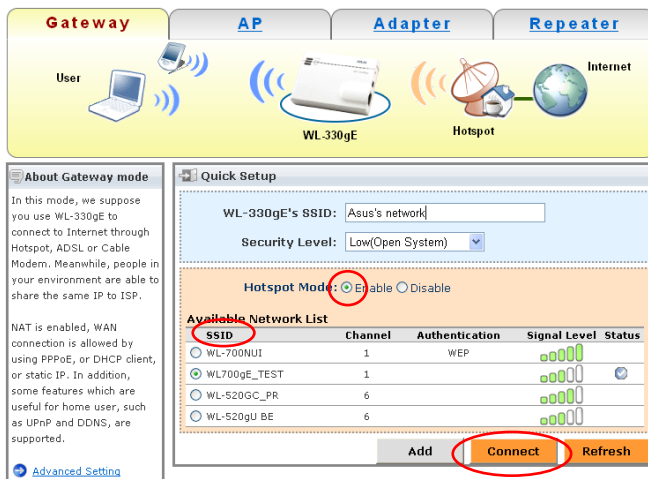


Підключіть WL-330gE до «гарячої» точки:

1. На головній сторінці налаштувань WL-330gE за замовчуванням висвітиться «Режим шлюзу». Якщо ні – виберіть планшет «Режим шлюзу» (“Gateway Mode”).
2. У «Режимі шлюзу» введіть будь-яке ім'я як SSID WL-330gE (назва Вашої мережі). Наприклад, мережа ASUS.
3. Рівень безпеки виберіть на власний розсуд. Для прикладу, Низький (відкрита система).



- Виберіть «Дозволити» режим «гарячої» точки. Після цього з'явиться перелік доступних назв «гарячих» точок SSID.



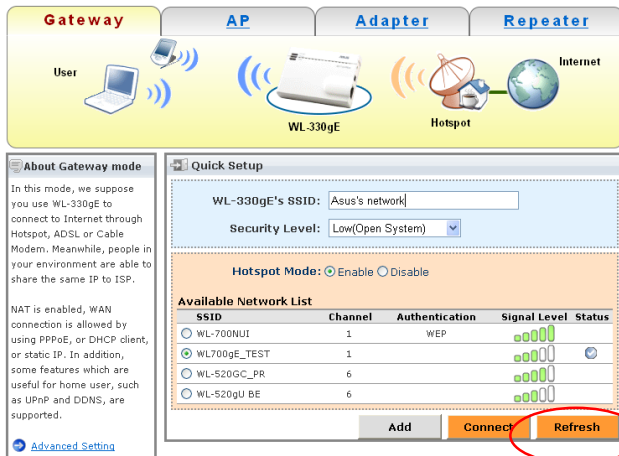
- Виберіть SSID «гарячої» точки (назву «гарячої» точки), яку Ви хочете підключити.
- Натисніть кнопку «Підключитися» ("Connect").





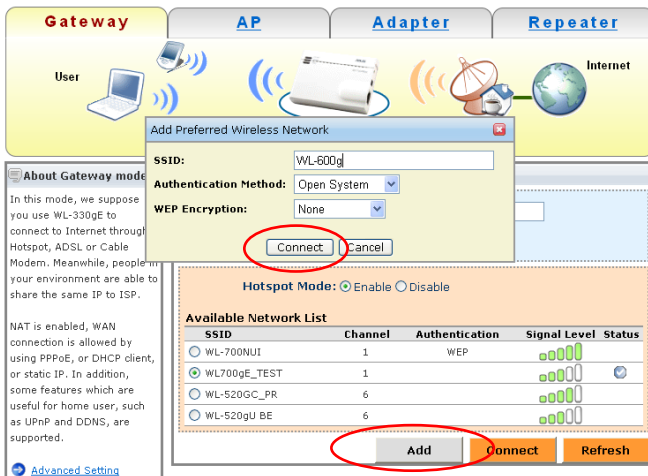
!! P.S. Якщо SSID «гарячої» точки, яку Ви хочете підключити, немає у переліку

1. Натисніть кнопку «Оновити» (“Refresh”), щоб переконатися в тому, що всі найближчі SSID «гарячих» точок подані в списку.



Українська

2. Якщо все ж назви немає, натисніть кнопку «Додати» (“Add”) для того, щоб вручну ввести (вибрати) SSID, яку Ви хочете підключити, «Автентифікація» та «Методи кодування». Тоді натисніть на «Підключити».



83





Тепер Ваш WL-330gE готовий спільно використовувати підключення в «гарячій» точці до Інтернету інших бездротових пристроїв, що належать Вам або Вашим друзям.

Спільне використання з'єднання з Інтернетом в «гарячих» точках між користувачами Вашої мережі через WL-330gE:

Тільки підключіть бездротовим зв'язком ці пристрої до SSID WL-330gE, яку Ви вказували на кроці 2, тоді з'єднання з Інтернетом в «гарячих» точках можна використовувати спільно без додаткових витрат!



можна від'єднати WL-330gE від ноутбука після закінчення налаштувань.



WL-330gE의 Hotspot 모드

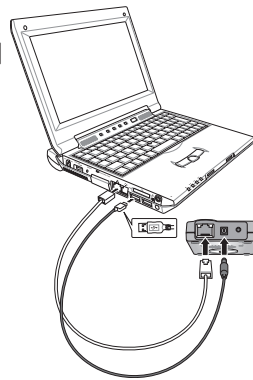
WL-330gE 게이트웨이 모드에서의 “Hotspot Mode”는 사용자의 노트북 PC가 인터넷에 연결되는 것은 물론 사용자의 또는 친구들의 WiFi 장치 (PDA, PSP 또는 WiFi 폰)까지도 추가의 비용 없이 인터넷에 접속할 수 있도록 도와줍니다.



WL-330gE의 Hotspot 기능으로 어떻게 인터넷 연결을 공유할 수 있습니까?

WL-330gE를 구성하기 전에:

1. USB 전원 코드를 사용하여 WL-330gE의 전원을 켜 주십시오.
2. 이더넷(RJ45) 케이블을 사용하여 WL-330gE를 노트북에 연결해 주십시오.
3. 컴퓨터의 인터넷 브라우저를 열고, 주소창에 192.168.1.220을 입력해 주십시오.



주의

WL-330gE를 Hotspot에 연결하기:

1. WL-330gE 셋업 페이지에서 “Gateway Mode”는 기본으로 활성화되어 있습니다. 만약 아니라면 “Gateway Mode”를 선택해 주십시오.
2. “Gateway Mode”에서 WL-330gE의 SSID(네트워크 이름) 이름을 입력해 주십시오. 예: ASUS's network.
3. 보안 수준(Security Level)을 선택해 주십시오. 예: Low(Open System)





Gateway **AP** **Adapter** **Repeater**

User WL-330gE ADSL/Cable Modem Internet

About Gateway mode

In this mode, we suppose you use WL-330gE to connect to Internet through Hotspot, ADSL or Cable Modem. Meanwhile, people in your environment are able to share the same IP to ISP.

NAT is enabled, WAN connection is allowed by using PPPoE, or DHCP client, or static IP. In addition, some features which are useful for home user, such as UPnP and DDNS, are supported.

[Advanced Setting](#)

Quick Setup

SSID:

Security Level:

Hotspot Mode: ☐ Enable ☒ Disable

Finish

4. Hotspot Mode의 “Enable”을 선택해 주십시오. 사용 가능한 Hotspot SSID 목록이 나타날 것입니다.

Gateway **AP** **Adapter** **Repeater**

User WL-330gE Hotspot Internet

About Gateway mode

In this mode, we suppose you use WL-330gE to connect to Internet through Hotspot, ADSL or Cable Modem. Meanwhile, people in your environment are able to share the same IP to ISP.

NAT is enabled, WAN connection is allowed by using PPPoE, or DHCP client, or static IP. In addition, some features which are useful for home user, such as UPnP and DDNS, are supported.

[Advanced Setting](#)

Quick Setup

WL-330gE's SSID:

Security Level:

Hotspot Mode: ☒ Enable ☐ Disable

Available Network List

SSID	Channel	Authentication	Signal Level	Status
<input type="radio"/> WL-700NU1	1	WEP	<div><div></div><div></div><div></div><div></div><div></div></div>	
<input checked="" type="radio"/> WL700gE_TEST	1		<div><div></div><div></div><div></div><div></div><div></div></div>	
<input type="radio"/> WL-520GC_PR	6		<div><div></div><div></div><div></div><div></div><div></div></div>	
<input type="radio"/> WL-520gU BE	6		<div><div></div><div></div><div></div><div></div><div></div></div>	

Add **Connect** **Refresh**

5. 연결하고자 하는 Hotspot SSID (Hotspot 이름)을 선택해 주십시오.

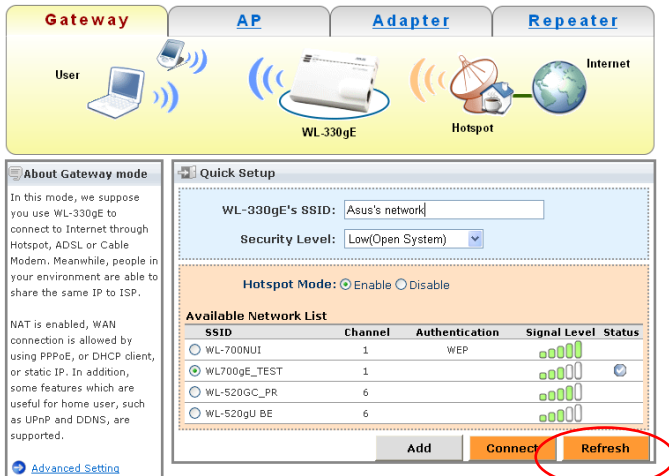
6. “Connect” 버튼을 눌러 주십시오.



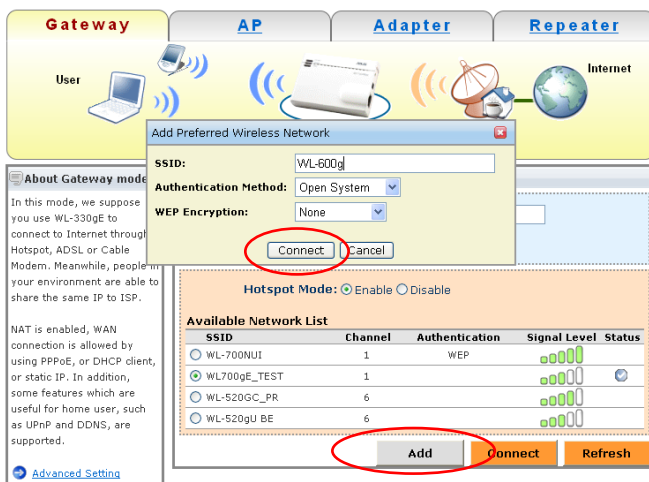


!! P.S. 연결하고자 하는 Hotspot SSID가 목록에 없다면

1. 주변의 모든 Hotspot SSID 목록이 표시되도록 “Refresh” 버튼을 눌러 주십시오.



2. 그래도 표시되지 않는다면, “Add” 버튼을 눌러 수동으로 연결하고자 하는 SSID와 인증 (Authentication) 방법 그리고 암호화 (Encryption) 방법을 입력해 주십시오.





WL-330gE는 이제 사용자와 또는 기타 무선 장치와의 인터넷 연결을 공유할 수 있습니다.

WL-330gE를 통해 네트워크 사용자와 Hotspot 인터넷 연결 공유하기:

무선으로 장치들을 2단계에서 지정한 WL-330gE의 SSID에 연결하면 추가의 비용 없이 인터넷 연결을 공유할 수 있습니다!



구성 절차가 완료되면, 노트북 PC와WL-330gE를 연결하는 RJ45 케이블을 제거해도 됩니다.





WL-330gE Hotspot Mode

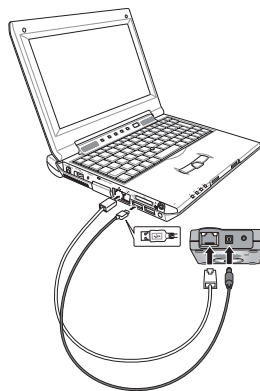
WL-330gE を「Hotspot Mode」(Gateway Mode 内のモードの 1 つ) に設定すれば、ノートパソコンはもちろん、他の WiFi デバイス (PDA、PSP、WiFi フォン) からもインターネットに接続することができます。



WL-330gE を Hotspot モードにし、インターネット接続を共有する

WL-330gE を設定する前に

1. 付属の USB 電源ケーブルを使用して WL-330gE の電源をオンにします。
2. イーサネットケーブル (RJ45) を使用し、WL-330gE をノートパソコンに接続します。
3. ブラウザを開き、アドレス入力欄に「192.168.1.220」(初期設定値)、または WL-330gE の IP アドレスとして設定した値を入力します。



WL-330gE を Hotspot に接続する

1. WL-330gE の設定メイン画面では、初期設定の「Gateway Mode」が表示されます。表示されない場合は「Gateway Mode」を選択します。
2. 「Gateway Mode」で、任意のネットワークネーム (WL-330gE の SSID) を入力します。

例: ASUS's network

3. セキュリティレベルを選択します。

例: Low (Open System)





Gateway **AP** **Adapter** **Repeater**

User WL-330gE ADSL/Cable Modem Internet

About Gateway mode

In this mode, we suppose you use WL-330gE to connect to Internet through Hotspot, ADSL or Cable Modem. Meanwhile, people in your environment are able to share the same IP to ISP.

NAT is enabled, WAN connection is allowed by using PPPoE, or DHCP client, or static IP. In addition, some features which are useful for home user, such as UPnP and DDNS, are supported.

[Advanced Setting](#)

Quick Setup

SSID:

Security Level:

Hotspot Mode: ☐ Enable ☒ Disable

Finish

4. 「Hotspot Mode」の項目を「Enable」に設定します。設定すると利用可能な Hotspot SSID のリストが表示されます。

Gateway **AP** **Adapter** **Repeater**

User WL-330gE Hotspot Internet

About Gateway mode

In this mode, we suppose you use WL-330gE to connect to Internet through Hotspot, ADSL or Cable Modem. Meanwhile, people in your environment are able to share the same IP to ISP.

NAT is enabled, WAN connection is allowed by using PPPoE, or DHCP client, or static IP. In addition, some features which are useful for home user, such as UPnP and DDNS, are supported.

[Advanced Setting](#)

Quick Setup

WL-330gE's SSID:

Security Level:

Hotspot Mode: ☒ Enable ☐ Disable

Available Network List

SSID	Channel	Authentication	Signal Level	Status
<input type="radio"/> WL-700NU1	1	WEP	<div><div></div><div></div><div></div><div></div><div></div></div>	
<input checked="" type="radio"/> WL700gE_TEST	1		<div><div></div><div></div><div></div><div></div><div></div></div>	
<input type="radio"/> WL-520GC_PR	6		<div><div></div><div></div><div></div><div></div><div></div></div>	
<input type="radio"/> WL-520GU BE	6		<div><div></div><div></div><div></div><div></div><div></div></div>	

Add **Connect** **Refresh**

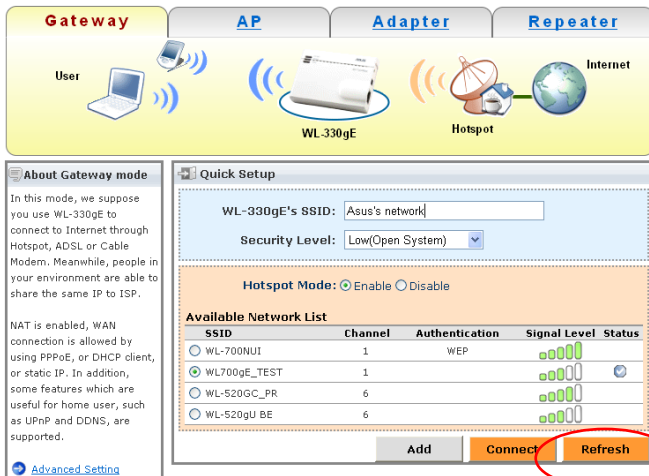
5. 接続するHotspot SSID (Hotspot の名前)を選択します。
6. 「Connect」をクリックします。]



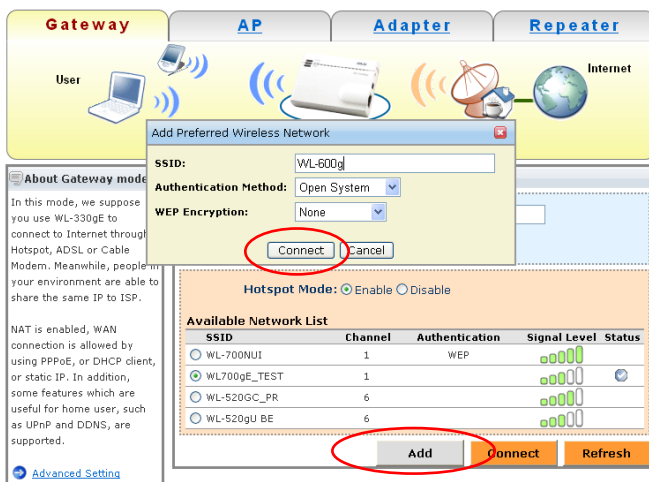


注!Hotspotがリストに表示されない、またはHotspotのSSIDがブロードキャストされていない場合

1. 「Refresh」をクリックし、周辺のHotspot SSID を全て表示させます。



2. それでも表示されない場合は、「Add」をクリックし、手でSSIDを入力します。Authentication (認証) の方式とEncryption (暗号化) 方式を選択し、「Connect」をクリックします。





これで WL-330gE は他の無線デバイスとの間で、Hotspot Internet 接続を共有できる環境になりました。

WL-330gEを使用してネットワークユーザーとHotspot Mode でインターネット接続を共有する

手順 2 で設定した WL-330gE の SSID に各デバイスを無線接続すれば、インターネット接続を共有することができます。



設定終了後は、WL-330gE とノートパソコンを接続している RJ-45 ケーブルを取り外すことができます。





WL-330gE in a Hotspot

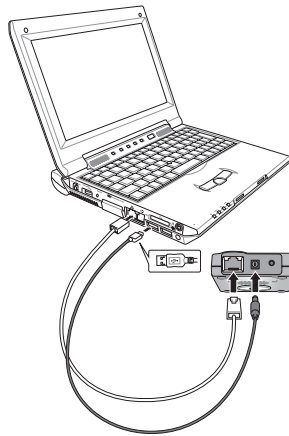
在閘道器(Gateway) 模式下，開啟 WL-330gE 的“Hotspot 模式”，不僅可讓您的筆記型電腦連線到網際網路，還可讓您（或您的朋友）的其他 WiFi 裝置（PDA，PSP 或 WiFi 電話）也能存取網際網路，且無需支付任何額外的費用。



如何在 hotspot 模式下用 WL-330gE 分享網際網路連線？

在您設定 WL-330gE 之前：

1. 用包裝內附的 USB 連接線連接 WL-330gE 與您的筆記型電腦，為 WL-330gE 供電。
2. 用乙太網路線 (RJ-45) 連接 WL-330gE 與您的筆記型電腦。
3. 在電腦上開啟網頁瀏覽器，並在位址欄內輸入 192.168.1.220。



將 WL-330gE 連接到 hotspot：

1. 預設狀態下，WL-330gE 設定頁面會顯示“Gateway Mode”。若未顯示，請點選“Gateway Mode”標籤。
2. 在“Gateway Mode”畫面，輸入一個名字作為 WL-330gE 的 SSID (您的網路名稱)。例如：ASUS' s network。
3. 選擇您想要的安全等級。例如：Low(Open System)。





Gateway
AP
Adapter
Repeater

使用者 WL-330gE ADSL/Cable Modem 網際網路

關於 Gateway 模式

在此模式中，我們建議您使用 WL-330gE 透過 Hotspot、ADSL 或 Cable Modem 來連結網際網路。同時，在您的環境中許多人都可分享同一 IP 來使用 ISP。

此模式啟用網路位址轉換 (NAT)，允許使用 PPPoE、DHCP client 或靜態 IP 來進行網路連線 (WAN) 連線作業。另外，也支援一些對家庭用戶相當有用的功能，像是適用隨插即用 (UPnP) 及動態 DNS (DDNS)。

[進階設定](#)

快速安裝

網路名稱 (SSID) :

安全性層級 :

Hotspot 模式 : ☐ 開啟 ☒ 關閉

儲存

4. 選擇 “Enable” 以開啟 Hotspot 模式。接著，會顯示可使用的 hotspot SSID 清單。

Gateway
AP
Adapter
Repeater

使用者 WL-330gE Hotspot 網際網路

關於 Gateway 模式

在此模式中，我們建議您使用 WL-330gE 透過 Hotspot、ADSL 或 Cable Modem 來連結網際網路。同時，在您的環境中許多人都可分享同一 IP 來使用 ISP。

此模式啟用網路位址轉換 (NAT)，允許使用 PPPoE、DHCP client 或靜態 IP 來進行網路連線 (WAN) 連線作業。另外，也支援一些對家庭用戶相當有用的功能，像是適用隨插即用 (UPnP) 及動態 DNS (DDNS)。

[進階設定](#)

快速安裝

WL-330gE 的網路名稱 :

安全性層級 :

Hotspot 模式 : ☒ 開啟 ☐ 關閉

可用網路清單	頻道	網路類型	信號強度	狀態
<input type="radio"/> WL-700NUI	1	WEP	<div style="width: 100%; height: 10px; background-color: #808080;"></div>	
<input checked="" type="radio"/> WL700gE_TEST	1		<div style="width: 100%; height: 10px; background-color: #808080;"></div>	
<input type="radio"/> WL-520GC_PR	6		<div style="width: 100%; height: 10px; background-color: #808080;"></div>	
<input type="radio"/> WL-520gU_BE	6		<div style="width: 100%; height: 10px; background-color: #808080;"></div>	

新增
連線
重新整理

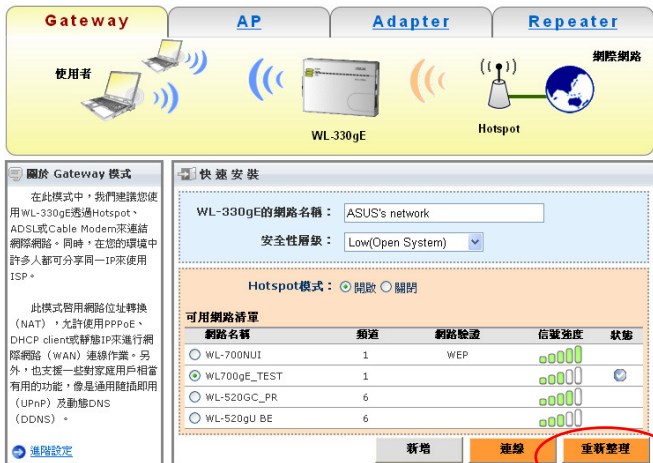
5. 選擇您欲連線的 hotspot 之 SSID (hotspot 的名字)。
6. 點選 “連線” 按鈕。





若您欲連線的 hotspot 之 SSID 不在清單中

1. 點選“重新整理”以確保有效範圍內所有的 hotspot 之 SSID 都已顯示。



2. 若仍然沒有顯示，請點選“新增”以手動輸入（選擇）您欲連線的 SSID，認證方式與加密設定。接著點選“連線”。





現在，您的 WL-330gE 即可讓您和您朋友的無線裝置分享 hotspot 網際網路連線了！

透過 WL-330gE 讓您的網路使用者分享 hotspot 網際網路連線：

只需將這些裝置無線連接到步驟 2 中設定的 WL-330gE 之 SSID，即可開始分享 hotspot 網際網路連線，且無需支付任何額外的費用！



設定完成後，您可以將設定用的網路線從 WL-330gE 及您的筆記型電腦上移除。





WL-330gE 用于 Hotspot

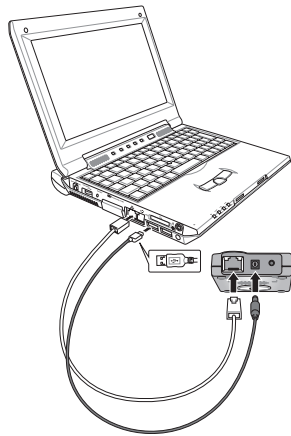
在网关 (Gateway) 模式下，开启 WL-330gE 的“Hotspot 模式”，不仅可让您的笔记本电脑连接到互联网，还可让您 (或您的朋友) 的其他 WiFi 设备 (PDA，PSP 或 WiFi 电话) 也能访问互联网，且无需支付任何额外的费用。



如何在 hotspot 模式下用 WL-330gE 分享互联网连接？

在您设置 WL-330gE 之前：

1. 用包装内附的 USB 连接线连接 WL-330gE 与您的笔记本电脑，为 WL-330gE 供电。
2. 用以太网线 (RJ-45) 连接 WL-330gE 与您的笔记本电脑。
3. 在电脑上开启网页浏览器，并在地址栏内输入 192.168.1.220。



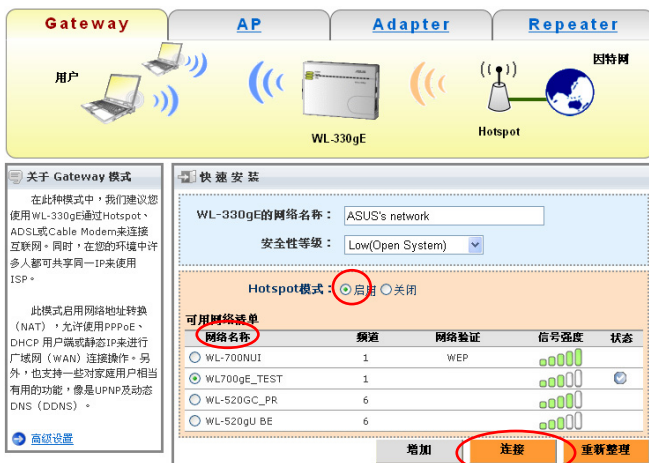
将 WL-330gE 连接到 hotspot：

1. 默认状态下，WL-330gE 设置页面会显示“Gateway Mode”。若未显示，请点击“Gateway Mode”标签。
2. 在“Gateway Mode”画面，输入一个名字作为 WL-330gE 的 SSID (您的网络名称)。例如：ASUS' s network。
3. 选择您想要的安全等级。例如：Low(Open System)。





4. 选择“Enable”以开启 Hotspot 模式。接着，会显示可使用的 hotspot SSID 清单。

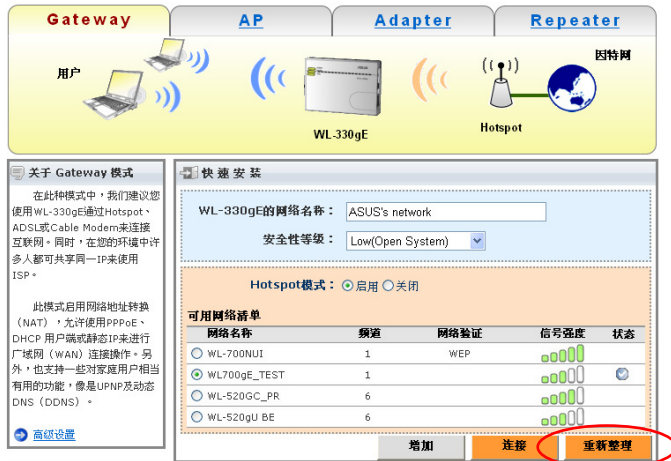


5. 选择您想要连接的 hotspot 之 SSID (hotspot 的名字)。
6. 点击“连接”按钮。



若您想要连接的 hotspot 之 SSID 不在清单中

1. 点选“重新整理”以确保有效范围内所有的 hotspot 之 SSID 都已显示。



2. 若仍然没有显示，请点击“增加”以手动输入（选择）您想要连接的 SSID，认证方式与加密设定。接着点选“连接”。





现在，您的 WL-330gE 即可让您和您朋友的无线设备分享 hotspot 互联网连接了！

透过 WL-330gE 让您的网络用户分享 hotspot 互联网连接：

只需将这些设备无线连接到步骤 2 中设定的 WL-330gE 之 SSID，即可开始分享 hotspot 互联网连接，且无需支付任何额外的费用！



设置完成后，您可以将连接 WL-330gE 与您的笔记本电脑的网线拔除。

